



ENROLLMENT PROJECTIONS REPORT BY SCHOOL OF ATTENDANCE

OJAI UNIFIED SCHOOL DISTRICT

SEPTEMBER 8, 2022



TABLE OF CONTENTS

SECTION	PAGE
ACKNOWLEDGEMENTS	2
EXECUTIVE SUMMARY	3
ENROLLMENT PROJECTION METHODOLOGY	5
U.S. CENSUS	7
GENERAL DEMOGRAPHICS	20
ESTIMATED SCHOOL-AGED POPULATION CHANGE	21
HOUSING DATA	23
RESIDENT LIVE BIRTH DATA	24
SURVIVAL RATIOS	26
HISTORICAL ENROLLMENT	27
PROJECTED ENROLLMENT	31
ENROLLMENT BY SCHOOL OF ATTENDANCE	40
CONCLUSION	48
APPENDIX	A1

ACKNOWLEDGMENTS

On behalf of Cooperative Strategies, we would like to extend our appreciation to the Ojai Unified School District for the opportunity to assist them in developing this Enrollment Projections Report which includes projections by school of attendance. As a planning team, we hope that this document will serve the Ojai Unified School District for years to come.

COOPERATIVE STRATEGIES

Ann Hoffsis, REFP, Chief Operating Officer
Justin Rich, Executive Director
Galina Lyogky, Senior Associate
Frances Maldonado, Associate

4675 Lakehurst Court, Suite 200
Dublin, OH 43016

P. 614.798.8828

www.coopstrategies.com

EXECUTIVE SUMMARY

The enrollment projections by school of attendance for the Ojai Unified School District included in this report were developed using the cohort survival methodology and Cooperative Strategies' custom enrollment projection software, S.T.E.P. [Student Trends & Enrollment Projections]. This custom software was developed in collaboration with The Ohio State University and is based on industry best practices as well as the national experience Cooperative Strategies has with schools, school districts, and state agencies.



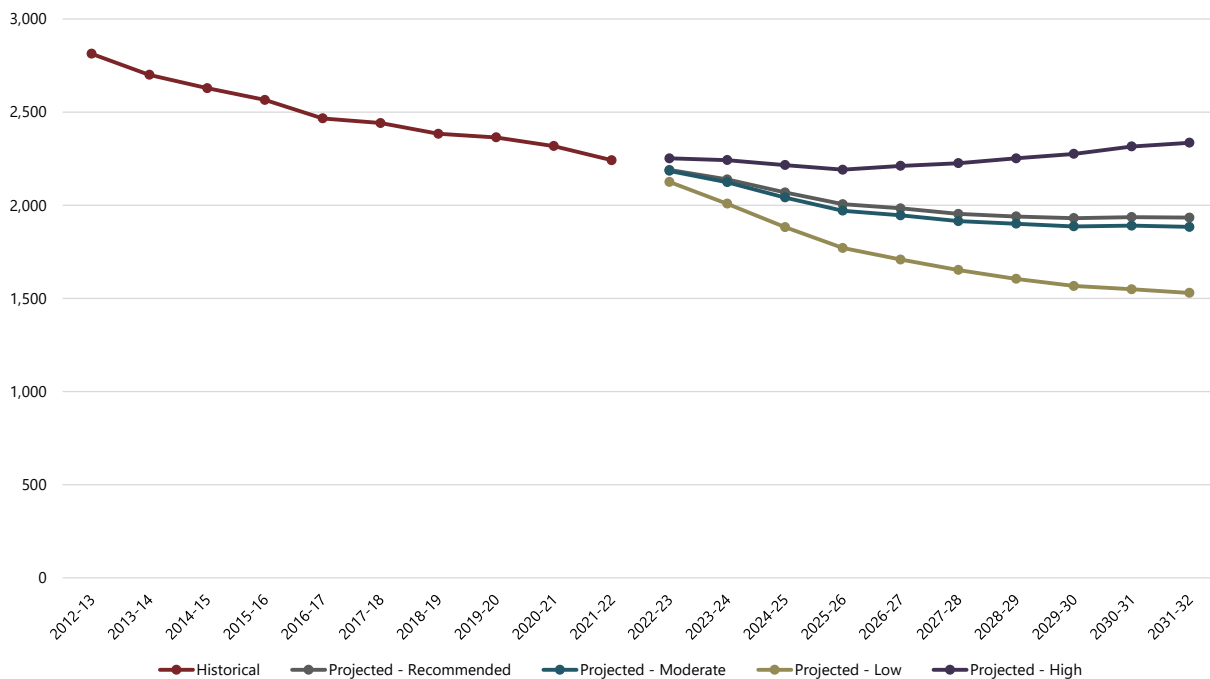
The Ojai Unified School District serves 2,242 students in the 2021-22 school year in Meiners Oaks ES, Mira Monte ES, San Antonio ES, Topa Topa ES, Summit Independent School, Matilija MS, Legacy HS, and Nordhoff HS.

The projections presented in this report are meant to serve as a planning tool for the future, and represent the most likely direction of the District. Enrollment projections were developed using the cohort survival methodology and by analyzing the following data outlined in this report:

- Historical enrollment by school, by grade, by year
- Resident live birth data
- Census data
- Building permits

Enrollment in the Ojai Unified School District has decreased by 572 students from the 2012-13 to the 2021-22 school year. Based on the cohort survival methodology, enrollment is projected to decrease over the next ten years.

HISTORICAL & PROJECTED ENROLLMENT - OJAI UNIFIED SCHOOL DISTRICT



As with any projection, the District should pay close attention to the variables associated with determining enrollment projections discussed in this document. Any one or more of these factors can increase or decrease enrollment within the Ojai Unified School District. When projecting future enrollments, it is vital to track the number of live births, the amount of new housing activity, and the change in household composition. It is recommended that the data contained in this report be reviewed on an annual basis to determine how more recent trends and any new housing development will impact the enrollment. In addition, any of the following factors could cause a significant change in projected student enrollment:

- Boundary adjustments
- New school openings
- School closures
- Changes / additions in program offerings
- Preschool programs
- Changes in grade configuration
- Interest rates / unemployment shifts
- Intra- and inter-District transfers
- Housing Affordability
- Magnet / charter / private school openings or closures
- Zoning changes
- Annexations
- Unplanned new housing activity
- Planned, but not built, housing
- School voucher programs
- Pandemics

Obviously, certain factors can be gauged and planned for far better than others. For instance, it may be relatively straightforward to gather housing data from local builders regarding the total number of lots in a planned subdivision and calculate the potential student yield. However, planning for changes in the unemployment rate, and how these may either boost or reduce public school enrollment, proves to be more difficult. In any case, it is essential to gather a wide variety of information in preparation for producing enrollment projections.

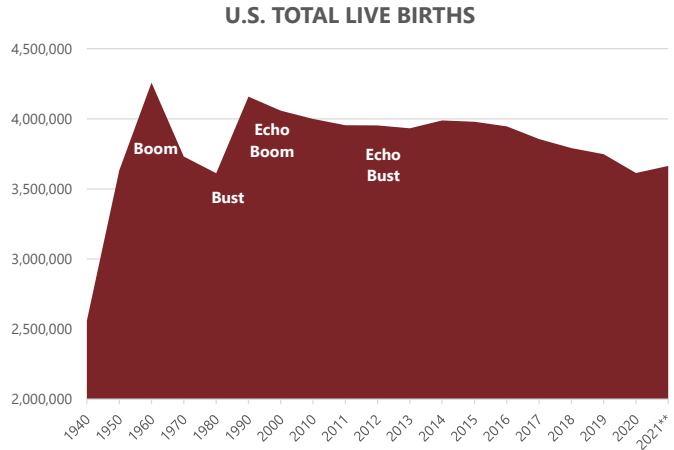
When looking ahead at a school district's enrollment over the next two, five, or ten years, it is helpful to approach the process from a global perspective. For example: How many new homes have been constructed each year? How many births have occurred each year in relation to the resident population? Is housing experiencing a turnover—if so, what is the composition of families moving in/out? Are more or less students attending private school or being home-schooled? What has the unemployment rate trend been over the past ten years? What new educational policies are in place that could affect student enrollment figures?

The cohort survival methodology is a standard methodology used throughout the educational planning industry to project enrollment. The enrollment projections developed for the Ojai Unified School District were developed using the cohort survival method.

ENROLLMENT PROJECTION METHODOLOGY

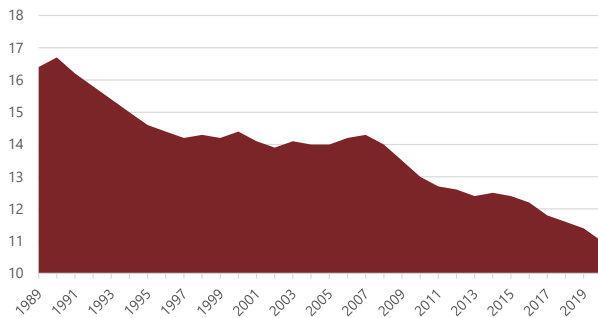
Introduction

Tracing the landscape of the country’s public school enrollment back over the past fifty years reveals demographic, economic, and social changes. The United States as a whole continues to undergo major shifts in public student enrollment, due in large part to past events including the baby boom, the availability and use of birth control, and the development of suburbs. The baby boom of the late 1940s and 50s was followed by the baby bust of the 1960s and 70s. This gave rise to the echo baby boom of the 1980s.



Source: CDC, National Vital Statistics Report; **National Center for Health Statistics

U.S. POPULATION - LIVE BIRTH RATE PER 1,000 POPULATION



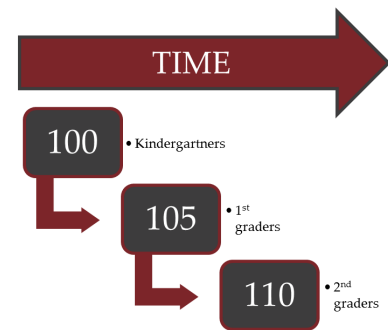
Source: CDC, National Vital Statistics Report

Nationwide, districts have experienced the effects of the echo baby bust of the 1990s. From the 1950s to the 1970s, a dramatic downsizing of the family unit occurred. A direct result was the declining school enrollment of the 1970s and 1980s. As of the 2010 Census, the size of a family was at an all-time low of 3.14 persons. The live birth rate increased for the first time in several years in 1998 and increased again in 2000 and 2006. However, the birth rate resumed a descending pattern in 2008 and reached an all-time low of 11.0 (per 1,000) in 2020.

Cohort Survival Method

The cohort survival methodology (sometimes referred to as the grade progression ratio method) is a widely used enrollment projection model that is used by many school districts and state and federal agencies to project K-12 enrollment.

A cohort is a group of persons [in this case, students]. The cohort survival enrollment projection methodology uses historic live birth data and historic student enrollment to “age” a known population or cohort throughout the school grades. For instance, a cohort begins when a group of kindergarteners enrolls in grade K and moves to first grade the following year, second grade the next year, and so on.



A “survival ratio” is developed to track how this group of students increased or decreased in number as they moved through the grade levels. By developing survival ratios for each grade transition [i.e. 2nd to 3rd grade] over a ten year period of time, patterns emerge. A projection ratio for each grade transition is developed based on analysis of the survival ratios. The projection ratios are used as a multiplier in determining future enrollment.

For example, if student enrollment has consistently increased from the 8th to the 9th grade over the past ten years, the survival ratio would be greater than 100% and could be multiplied by the current 8th grade enrollment to develop a projection for next year’s 9th grade. This methodology can be carried through to develop ten years of projection figures. Because there is not a grade cohort to follow for students coming into kindergarten, resident live birth counts are used to develop a birth-to-kindergarten survival ratio. Babies born five years previous to the kindergarten class are compared in number, and a ratio can be developed to project future kindergarten enrollments.

The cohort survival method is useful in areas where population is stable [relatively flat, growing steadily, or declining steadily], and where there have been no significant fluctuations in enrollment, births, and housing patterns from year to year. The cohort survival methodology inherently considers the net effects of factors such as migration, housing, dropouts, transfers to and from charter schools, open enrollment, and deaths. This methodology does not assume changes in policies, program offerings, or future changes in housing and migration patterns.

U.S. CENSUS

This section presents data from the United States Census Bureau and estimates from the American Community Survey (ACS) to demonstrate the demographic characteristics and historic trends of the population within the District boundary. While the Census is conducted every 10 years, the American Community Survey collects social, housing, educational, occupational, financial, and other demographic data from over 3.5 million households throughout the nation monthly and is compiled yearly, as mandated by the U.S. Constitution. This data helps public officials, federal/state/local agencies, school districts, etc. assess historic trends and plan for the future.

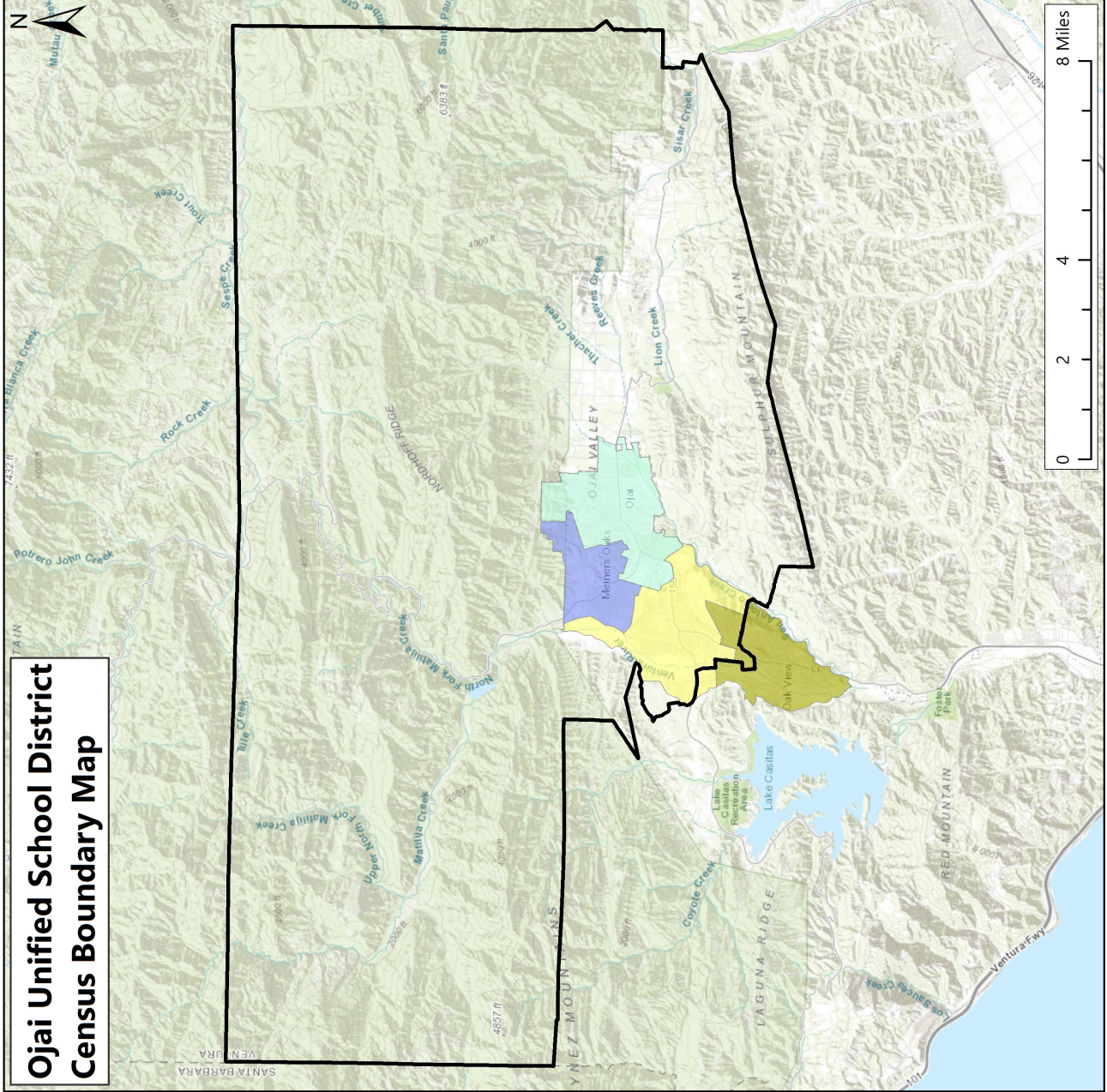
The Ojai Unified School District is located in Ventura County, California. It serves parts or all of the Los Padres CCD, Ojai-Mira Monte CCD, Santa Paula CCD, Ventura CCD, Meiners Oaks CDP, Mira Monte CDP, Oak View CDP, Ojai city. The data on the following pages is aggregated and color-coordinated by the boundaries shown in the map on the following page.

According to the U.S. Census Bureau, California is a state where minor civil divisions (such as townships, commissioner districts, towns, etc.) are not legally established, so Census County Divisions (CCDs) are formed and used by the Census Bureau to aggregate Census data. While CCDs are not used in legal or governmental functions, they dissolve counties into smaller sections for statistical purposes by following geographical or man-made features (such as mountain ranges, rivers, roads, etc.) and are named after local places or settlements that help identify their location.

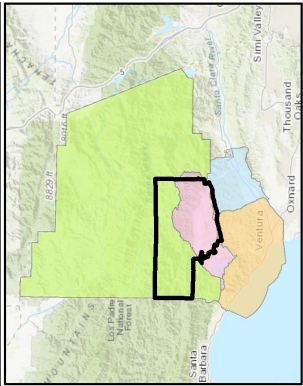
It should be noted that the District does not necessarily serve whole municipalities but data presented by municipality is for the whole municipality.

The complete 2020 Census data and 2021 ACS estimates were not readily accessible at the time this report was developed. As such, the latest data available is shown in the tables on the following pages.

*Census Designated Place



**Ojai Unified School District
Census Boundary Map**



- Ojai USD Boundary
- Ventura County Boundary
- County Subdivisions**
- Los Padres CCD
- Ojai-Mira Monte CCD
- Santa Paula CCD
- Ventura CCD
- Places**
- Meiners Oaks CDP
- Mira Monte CDP
- Oak View CDP
- Ojai city

This map shows the census boundaries used to delineate areas served by the District. It should be noted that the boundaries of cities/CDPs/towns/villages may vary across the years as population and commercial activity fluctuate.

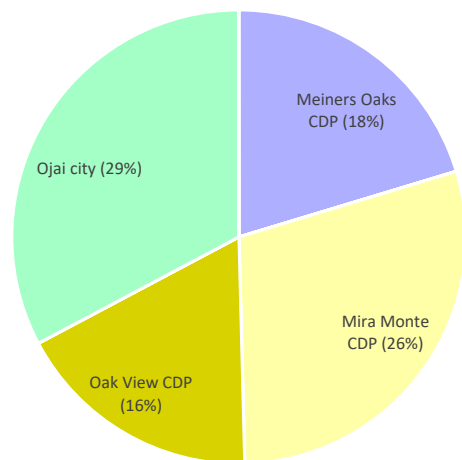
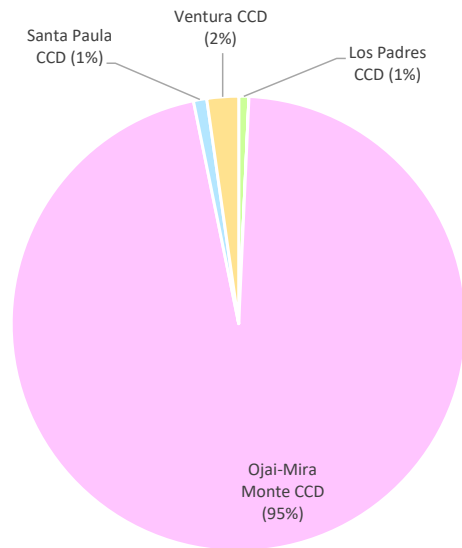
Students by Municipality

The table and graphs below show how many Ojai Unified School District students live in each municipality, by year, according to student data.* The percentages for each municipality are based on the total students in the Ojai Unified School District. The total at the bottom of the table indicates the total number of students in the District, not the sum of the students living in the municipalities.

Historical Enrollment by Census Municipality	2021-22
Ojai Unified School District Boundary	1,873 84%
Ventura County	2,242 100%
Los Padres CCD	16 1%
Ojai-Mira Monte CCD	2,135 95%
Santa Paula CCD	21 1%
Ventura CCD	50 2%
Meiners Oaks CDP	401 18%
Mira Monte CDP	577 26%
Oak View CDP	348 16%
Ojai city	646 29%
Total Students*	2,243

Source: Ojai Unified School District Student Data

*This total reflects the amount of District students, not a total of the values in the table.



*Student data and official enrollment are taken at different points in the year, so student data counts do not necessarily match official enrollment counts.

Population

According to the 2020 ACS estimates, since the 2010 Census, the total population and median age increased in the District boundary.

Based on the 2020 estimates, since the 2010 Census, the number of children under the age of 5 has decreased by 31 percent, the number of children ages 5 - 19 has decreased by 22 percent, the number of adults ages 20 - 64 has decreased by 4 percent, and the number of adults ages 65 and over has increased by 49 percent in the District boundary.

The 2000 and 2010 population counts and 2020 population estimates are shown in the table to the right.

Population		Under 5 years	5 to 19 years	20 to 64 years	65 years and over	Total Population	Median Age
Ojai Unified School District Boundary	2000**	-	-	-	-	-	-
	2010	966	3,999	12,748	4,026	21,739	46.7
	2020*	662	3,113	12,288	6,007	22,070	51.4
	Trend						
Ventura County	2000	55,830	178,946	442,839	75,582	753,197	**
	2010	55,336	181,767	489,906	96,309	823,318	36.2
	2020*	49,179	166,716	498,032	131,672	845,599	38.5
	Trend						
Los Padres CCD	2000	49	136	520	138	843	**
	2010	25	129	523	142	819	51.7
	2020*	23	68	482	160	733	55.7
	Trend						
Ojai-Mira Monte CCD	2000**	-	-	-	-	-	-
	2010	1,314	5,129	16,616	4,725	27,784	45.7
	2020*	967	4,258	16,166	7,065	28,456	49.3
	Trend						
Santa Paula CCD	2000	2,664	8,011	17,656	3,221	31,552	**
	2010	2,727	7,864	18,103	3,366	32,060	31.0
	2020*	2,666	7,723	18,402	4,441	33,232	32.5
	Trend						
Ventura CCD	2000	7,046	22,226	63,674	13,287	106,233	**
	2010	6,520	21,782	68,800	14,787	111,889	38.9
	2020*	6,203	20,107	67,462	20,089	113,861	40.2
	Trend						
Meiners Oaks CDP	2000	231	1,150	2,155	385	3,921	**
	2010	214	722	2,176	459	3,571	40.2
	2020*	164	498	1,929	1,106	3,697	49.1
	Trend						
Mira Monte CDP	2000	249	1,487	4,021	1,158	6,915	**
	2010	255	1,227	3,923	1,449	6,854	48.0
	2020*	215	759	4,024	1,835	6,833	51.6
	Trend						
Oak View CDP	2000	243	1,130	2,617	304	4,294	**
	2010	237	829	2,584	416	4,066	39.6
	2020*	313	1,028	3,986	1,230	6,557	42.3
	Trend						
Ojai city	2000	413	1,643	4,017	1,414	7,487	**
	2010	342	1,353	4,333	1,433	7,461	47.1
	2020*	184	1,502	3,966	1,961	7,613	48.8
	Trend						

Source: U.S. Census

*Source: American Community Survey 5-Year Estimates (2020)

**data not available

Race / Ethnicity & Language

The table below shows race and ethnic distribution throughout the Ojai Unified School District boundary and the municipalities that are served by the District.

Race & Ethnicity		White alone	Black or African American alone	American Indian and Alaska Native alone	Asian alone	Native Hawaiian and Other Pacific Islander alone	Some other race alone	Two or more races	Total Population	Hispanic Population
Ojai Unified School District Boundary	2000**	-	-	-	-	-	-	-	-	-
	2010	86.4%	0.6%	0.9%	1.8%	0.0%	7.2%	3.1%	21,739	19.1%
	2020	74.6%	0.6%	1.2%	2.4%	0.1%	8.0%	13.1%	22,057	21.5%
Ventura County	2000	69.8%	1.9%	0.8%	5.2%	0.2%	18.1%	4.0%	753,197	33.4%
	2010	68.7%	1.8%	1.0%	6.7%	0.2%	17.0%	4.5%	823,318	40.3%
	2020	50.8%	1.8%	1.7%	7.7%	0.2%	20.6%	17.2%	843,843	43.3%
Los Padres CCD	2000	92.2%	0.0%	0.0%	0.9%	0.0%	4.4%	2.5%	843	9.8%
	2010	86.4%	0.1%	0.1%	1.2%	0.2%	7.1%	4.8%	819	15.0%
	2020	80.4%	0.5%	1.4%	1.8%	0.0%	7.1%	8.9%	662	18.4%
Ojai-Mira Monte CCD	2000**	-	-	-	-	-	-	-	-	-
	2010	85.4%	0.6%	1.0%	1.6%	0.0%	8.2%	3.2%	27,784	20.9%
	2020	73.6%	0.6%	1.4%	2.1%	0.1%	8.6%	13.5%	28,145	23.4%
Santa Paula CCD	2000	55.5%	0.4%	1.0%	0.9%	0.1%	37.8%	4.3%	31,552	70.1%
	2010	63.5%	0.5%	1.6%	0.7%	0.1%	29.8%	3.8%	32,060	77.7%
	2020	32.8%	0.4%	2.6%	0.8%	0.1%	41.8%	21.5%	33,164	80.5%
Ventura CCD	2000	78.0%	1.3%	0.9%	3.0%	0.2%	12.1%	4.4%	106,233	25.1%
	2010	76.3%	1.6%	1.2%	3.3%	0.2%	12.2%	5.2%	111,889	32.6%
	2020	60.9%	1.8%	1.5%	3.9%	0.2%	14.6%	17.1%	115,732	36.0%
Meiners Oaks CDP	2000	84.3%	0.4%	0.5%	0.0%	0.2%	10.2%	4.4%	3,921	22.1%
	2010	78.1%	0.4%	1.6%	1.4%	0.0%	15.4%	3.1%	3,571	29.9%
	2020	67.7%	0.5%	1.5%	1.6%	0.3%	12.6%	15.8%	3,911	29.7%
Mira Monte CDP	2000	89.8%	0.7%	1.1%	2.0%	0.1%	3.7%	2.7%	6,915	13.8%
	2010	87.4%	0.6%	0.9%	1.9%	0.0%	5.9%	3.3%	6,854	18.3%
	2020	74.9%	0.6%	1.1%	2.7%	0.1%	8.0%	12.6%	6,618	21.3%
Oak View CDP	2000	82.0%	2.0%	1.1%	1.3%	0.0%	10.0%	3.7%	4,294	19.1%
	2010	79.4%	0.3%	1.5%	0.8%	0.1%	14.1%	3.8%	4,066	29.9%
	2020	69.6%	0.4%	2.5%	1.3%	0.1%	10.7%	15.5%	6,215	29.2%
Ojai city	2000	87.0%	0.1%	0.2%	1.8%	0.1%	6.1%	4.7%	7,487	16.6%
	2010	87.9%	0.6%	0.6%	2.1%	0.0%	5.9%	2.9%	7,461	17.9%
	2020	76.9%	0.4%	1.0%	3.0%	0.1%	7.0%	11.5%	7,637	19.2%

Source: U.S. Census

**data not available

According to the 2020 ACS estimates, approximately 20% of the population in the District boundary speaks a language other than English; the most prominently-spoken language besides English is Spanish. The table below shows the languages spoken at home.

Languages Spoken at Home (2020 Estimates)	Ojai Unified School District Boundary	Ventura County	Los Padres CCD	Ojai-Mira Monte CCD	Santa Paula CCD	Ventura CCD	Meiners Oaks CDP	Mira Monte CDP	Oak View CDP	Ojai city
Population 5 years and over	21,408	796,420	710	27,489	30,566	107,658	3,533	6,618	6,244	7,429
Speak only English	80.1%	62.1%	90.7%	80.0%	37.0%	72.6%	83.7%	75.8%	79.3%	82.3%
Speak a language other than English	19.9%	37.9%	9.3%	20%	63.0%	27.4%	16.3%	24.2%	20.7%	17.7%
Spanish	3,214	238,573	13	4,356	18,993	24,161	357	1,338	1,141	1,003
Other Indo-European languages	698	22,759	43	774	185	2,420	163	232	142	162
Asian and Pacific Island languages	248	33,011	10	260	53	2,040	12	0	12	129
Other languages	99	7,870	0	99	20	834	43	32	0	24

Source: American Community Survey 5-Year Estimates (2020)



Housing & Families

According to the 2020 ACS estimates, approximately 77% of the homes in the Ojai Unified School District boundary are single-unit structures while 10% of the homes are 2-or-more-unit structures. Nearly 21% of the District boundary's households have at least one school-aged (or younger) child in them.

Housing & Families (2020 Estimates)	Ojai Unified School District Boundary	Ventura County	Los Padres CCD	Ojai-Mira Monte CCD	Santa Paula CCD	Ventura CCD	Meiners Oaks CDP	Mira Monte CDP	Oak View CDP	Ojai city
Total Households	8,511	271,639	290	10,710	9,722	42,626	1,434	2,706	2,267	2,945
1-unit structures	77.0%	75.9%	81.7%	80.1%	69.9%	68.0%	70.2%	74.9%	95.0%	80.1%
2-or-more-unit structures	10.0%	20.2%	0.0%	8.8%	21.4%	26.5%	8.4%	2.4%	2.8%	19.9%
Mobile homes and all other types	13.0%	3.9%	18.3%	11.1%	8.6%	5.5%	21.5%	22.7%	2.2%	0.0%
Owner occupied:	69.3%	63.3%	71.4%	70.0%	53.7%	56.0%	71.0%	84.5%	74.4%	56.9%
Renter occupied:	30.7%	36.7%	28.6%	30.0%	46.3%	44.0%	29.0%	15.5%	25.6%	43.1%
Households with one or more people under 18 years	20.8%	34.1%	9.7%	22.2%	39.2%	28.7%	22.2%	18.1%	26.2%	25.2%
Average Family Size	3.08	3.57	3.45	3.16	3.90	3.23	3.10	3.05	3.28	3.24
Average Household Size	2.53	3.06	2.51	2.61	3.36	2.62	2.58	2.50	2.89	2.50

Source: American Community Survey 5-Year Estimates (2020)

According to the 2020 ACS estimates, the average family size and average household size are estimated to have increased in the District boundary since the 2010 Census.

Family/Household Size		Average Family Size	Average Household Size
Ojai Unified School District Boundary	2000**	-	-
	2010	2.99	2.46
	2020*	3.08	2.53
	Trend		
Ventura County	2000	3.46	3.04
	2010	3.47	3.04
	2020*	3.57	3.06
	Trend		
Los Padres CCD	2000	2.93	2.39
	2010	2.71	2.19
	2020*	3.45	2.51
	Trend		
Ojai-Mira Monte CCD	2000**	-	-
	2010	3.03	2.51
	2020*	3.16	2.61
	Trend		
Santa Paula CCD	2000	3.85	3.47
	2010	3.83	3.47
	2020*	3.90	3.36
	Trend		
Ventura CCD	2000	3.13	2.58
	2010	3.16	2.59
	2020*	3.23	2.62
	Trend		
Meiners Oaks CDP	2000	3.32	2.90
	2010	3.24	2.78
	2020*	3.10	2.58
	Trend		
Mira Monte CDP	2000	3.11	2.65
	2010	2.97	2.44
	2020*	3.05	2.50
	Trend		
Oak View CDP	2000	3.31	2.94
	2010	3.24	2.87
	2020*	3.28	2.89
	Trend		
Ojai city	2000	3.06	2.48
	2010	2.95	2.34
	2020*	3.24	2.50
	Trend		

Source: U.S. Census

*Source: American Community Survey 5-Year Estimates (2020)

**data not available

The number of total and vacant housing units in the District boundary has increased while the number of occupied units has decreased.

Housing Occupancy		Total housing units	Occupied housing units	Vacant housing units
Ojai Unified School District Boundary	2000**	-	-	-
	2010	9,485	8,647	838
	2020*	9,573	8,511	1,062
	Trend			
Ventura County	2000	251,712	243,234	8,478
	2010	281,695	266,920	14,775
	2020*	289,425	271,639	17,786
	Trend			
Los Padres CCD	2000	600	338	262
	2010	623	372	251
	2020*	438	290	148
	Trend			
Ojai-Mira Monte CCD	2000	-	-	-
	2010	11,861	10,885	976
	2020*	11,987	10,710	1,277
	Trend			
Santa Paula CCD	2000	9,120	8,886	234
	2010	9,574	9,103	471
	2020*	10,313	9,722	591
	Trend			
Ventura CCD	2000	41,811	40,310	1,501
	2010	44,924	42,240	2,684
	2020*	45,535	42,626	2,909
	Trend			
Meiners Oaks CDP	2000	1,315	1,282	33
	2010	1,396	1,283	113
	2020*	1,537	1,434	103
	Trend			
Mira Monte CDP	2000	2,715	2,642	73
	2010	3,009	2,800	209
	2020*	2,923	2,706	217
	Trend			
Oak View CDP	2000	1,446	1,409	37
	2010	1,523	1,419	104
	2020*	2,416	2,267	149
	Trend			
Ojai city	2000	3,197	3,048	149
	2010	3,382	3,111	271
	2020*	3,495	2,945	550
	Trend			

Source: U.S. Census

*Source: American Community Survey 5-Year Estimates (2020)

**data not available

Industry & Occupation

The table below illustrates the types of industry and occupation in the Ojai Unified School District boundary and the areas it serves. 2020 estimates are calculated for the civilian employed population 16 years and over.

Industry & Occupation for the Civilian Employed Population 16 Years and Over, (2020 Estimates)	Ojai Unified School District Boundary	Ventura County	Los Padres CCD	Ojai-Mira Monte CCD	Santa Paula CCD	Ventura CCD	Meiners Oaks CDP	Mira Monte CDP	Oak View CDP	Ojai city
Total population	22,070	845,599	733	28,456	33,232	113,861	3,697	6,833	6,557	7,613
Civilian employed population, 16 years and over	10,546	411,295	283	13,859	14,279	55,441	1,754	3,249	3,397	3,438
Industry										
Agriculture, forestry, fishing and hunting, and mining	5.3%	5.1%	0.0%	4.4%	14.7%	2.0%	2.5%	6.9%	1.7%	1.3%
Construction	7.0%	6.1%	20.8%	8.0%	6.0%	7.0%	9.1%	10.4%	11.5%	4.4%
Manufacturing	4.8%	9.6%	0.0%	5.4%	11.4%	7.1%	2.9%	4.5%	6.0%	6.4%
Wholesale trade	1.8%	2.9%	7.1%	1.4%	5.3%	2.8%	3.5%	0.0%	1.6%	2.2%
Retail trade	7.5%	10.0%	19.1%	8.2%	11.2%	10.2%	8.1%	7.7%	12.4%	7.5%
Transportation and warehousing, and utilities	3.6%	3.6%	13.1%	3.3%	4.7%	4.3%	2.6%	4.3%	3.8%	2.4%
Information	3.5%	2.4%	4.9%	2.7%	0.6%	1.8%	3.8%	2.5%	0.0%	2.5%
Finance and insurance, and real estate and rental and leasing	4.4%	7.3%	1.4%	3.7%	2.9%	5.6%	4.5%	3.1%	3.3%	4.7%
Professional, scientific, and management, and administrative and waste management services	14.7%	12.7%	3.9%	16.1%	7.0%	12.4%	9.2%	21.7%	20.0%	12.6%
Educational services, and health care and social assistance	21.8%	19.8%	3.2%	22.5%	18.2%	21.9%	18.9%	17.8%	22.8%	28.4%
Arts, entertainment, and recreation, and accommodation and food services	12.5%	9.7%	19.4%	11.4%	6.2%	11.2%	22.9%	10.5%	6.4%	12.4%
Other services, except public administration	7.4%	5.4%	4.6%	7.4%	7.1%	5.6%	9.4%	4.1%	6.0%	9.1%
Public administration	5.7%	5.4%	2.5%	5.5%	4.7%	8.0%	2.9%	6.5%	4.2%	6.2%
Occupation										
Management, business, science, and arts occupations	44.7%	38.2%	37.1%	42.5%	19.6%	40.2%	34.7%	42.1%	31.2%	46.5%
Service occupations	22.6%	17.5%	18.1%	23.5%	18.9%	18.6%	36.4%	20.3%	26.8%	20.1%
Sales and office occupations	18.2%	21.8%	19.0%	18.2%	20.5%	22.6%	17.3%	22.7%	22.2%	18.0%
Natural resources, construction, and maintenance occupations	7.1%	11.8%	13.3%	7.8%	22.2%	9.2%	6.9%	7.8%	12.5%	6.4%
Production, transportation, and material moving occupations	7.5%	10.8%	12.5%	8.0%	18.8%	9.3%	4.8%	7.2%	7.3%	9.0%

Source: American Community Survey 5-Year Estimates (2020)

Financial Status

According to the U.S. Census Bureau, earnings come from a job (salary/wages) while income also includes payments such as "Social Security, pensions, child support, public assistance, annuities, money derived from rental properties, interest and dividends." The table below shows income, earnings, and poverty status in the ACS 2020 estimates.

Financial Status (2020 Estimates)	Ojai Unified School District Boundary	Ventura County	Los Padres CCD	Ojai-Mira Monte CCD	Santa Paula CCD	Ventura CCD	Meiners Oaks CDP	Mira Monte CDP	Oak View CDP	Ojai city
Earnings										
Population 16 years and over with earnings	12,071	451,528	392	15,746	15,750	61,241	1,926	3,529	3,784	4,090
Full-time, year-round workers with earnings	7,115	281,147	147	9,484	9,184	36,741	1,077	2,219	2,489	2,227
\$1 to \$9,999 or less	2.6%	1.4%	0.0%	2.5%	2.6%	1.5%	1.8%	0.6%	4.2%	2.1%
\$10,000 to \$14,999	1.8%	1.9%	7.5%	1.5%	2.6%	1.5%	4.0%	0.8%	1.0%	2.2%
\$15,000 to \$24,999	6.1%	9.2%	25.9%	7.8%	14.1%	6.8%	7.9%	5.9%	11.8%	6.3%
\$25,000 to \$34,999	15.9%	14.6%	10.2%	16.7%	25.8%	13.7%	14.4%	15.8%	23.7%	11.5%
\$35,000 to \$49,999	13.7%	16.4%	18.4%	12.9%	20.4%	17.6%	13.5%	9.8%	8.5%	11.5%
\$50,000 to \$64,999	12.8%	14.3%	14.3%	13.5%	14.1%	14.9%	15.5%	21.8%	14.7%	9.3%
\$65,000 to \$74,999	6.1%	6.3%	0.0%	6.4%	5.0%	8.9%	11.2%	1.3%	7.5%	6.7%
\$75,000 to \$99,999	14.9%	13.2%	8.2%	15.5%	7.5%	14.7%	14.7%	19.7%	16.3%	15.9%
\$100,000 or more	26.0%	22.7%	15.6%	23.1%	7.9%	20.3%	17.1%	24.2%	12.4%	34.5%
Median Earnings	\$38,435	\$38,301	\$33,182	\$37,380	\$27,406	\$40,252	\$35,238	\$48,425	\$33,565	\$39,167
Household Income										
Total Households	8,511	271,639	290	10,710	9,722	42,626	1,434	2,706	2,267	2,945
Less than \$10,000	3.7%	3.3%	3.1%	3.7%	3.6%	4.2%	1.2%	6.5%	1.9%	4.9%
\$10,000 to \$14,999	3.4%	2.5%	3.8%	3.1%	4.5%	3.2%	0.0%	4.7%	1.9%	4.4%
\$15,000 to \$24,999	5.9%	5.4%	6.6%	6.0%	9.2%	5.8%	2.6%	5.0%	4.1%	9.3%
\$25,000 to \$34,999	7.2%	6.2%	10.7%	6.9%	10.1%	7.5%	5.4%	7.5%	5.9%	7.3%
\$35,000 to \$49,999	9.3%	9.5%	10.0%	8.9%	12.2%	9.8%	7.9%	13.1%	6.6%	7.9%
\$50,000 to \$74,999	13.9%	14.4%	18.6%	14.3%	21.8%	17.0%	14.8%	9.9%	14.8%	15.6%
\$75,000 to \$99,999	11.5%	14.1%	27.2%	11.8%	16.3%	14.5%	23.0%	9.8%	15.0%	9.1%
\$100,000 to \$149,999	21.1%	19.3%	10.0%	23.1%	12.6%	18.0%	25.2%	20.5%	34.7%	17.2%
\$150,000 to \$199,999	8.4%	11.1%	1.4%	8.2%	6.0%	9.9%	14.1%	4.6%	7.4%	8.7%
\$200,000 or more	15.6%	14.1%	8.6%	14.1%	3.8%	10.2%	5.8%	18.5%	7.6%	15.7%
Median income (dollars)	\$84,330	\$89,295	\$63,750	\$85,759	\$63,186	\$79,312	\$90,294	\$79,861	\$97,917	\$75,653
Poverty Status										
% below poverty level	8.0%	8.9%	3.5%	7.2%	15.1%	9.6%	1.8%	12.2%	3.8%	8.9%
Under 18 years	8.5%	12.2%	0.0%	7.0%	25.0%	10.4%	0.0%	16.0%	1.8%	9.8%
18 to 64 years	9.2%	8.1%	2.3%	7.9%	11.2%	9.9%	3.4%	13.0%	4.0%	9.3%
65 years and over	5.2%	7.7%	8.8%	5.7%	11.5%	7.6%	0.0%	8.5%	5.0%	7.3%
Unemployment Rate										
Population 20 to 64 years	5.3%	4.8%	22.8%	4.8%	5.4%	4.8%	1.6%	6.0%	3.1%	7.0%

Source: American Community Survey 5-Year Estimates (2020)

Computer / Internet Access

The table below shows the presence of a computer and/or internet subscription in households in the geographies served by the District, according to the 2020 ACS estimates. Percentages shown are based on total households.

% of Total Households with Internet/Computers (2020 Estimates)	Ojai Unified School District Boundary	Ventura County	Los Padres CCD	Ojai-Mira Monte CCD	Santa Paula CCD	Ventura CCD	Meiners Oaks CDP	Mira Monte CDP	Oak View CDP	Ojai city
Has a Computer	93.5%	93.4%	82.4%	93.7%	82.0%	92.4%	98.0%	93.2%	95.9%	91.9%
Has an Internet subscription	88.5%	89.2%	80.3%	88.6%	77.6%	88.7%	94.5%	87.8%	90.7%	87.0%
Has no Internet Subscription	5.0%	4.2%	2.1%	5.1%	4.4%	3.8%	3.5%	5.5%	5.2%	4.9%
Has no Computer	6.5%	6.6%	17.6%	6.3%	18.0%	7.6%	2.0%	6.8%	4.1%	8.1%

Source: American Community Survey 5-Year Estimates (2020)

School Enrollment

The tables below summarize the percentage of the population living within the Ojai Unified School District boundary, by age group, enrolled in school; enrolled in school and attending public school; and enrolled in school and attending private school, based on U.S. Census American Community Survey (ACS) 5-Year Estimates. Home-schooled children are counted in the private school data. If anyone in these age groups had not attended any school in the 3 months before the survey was conducted, they were considered to not be enrolled in any school.

It should be noted that this data is not a survey of the students attending schools in the District; rather, it is based on monthly surveys sent out by the ACS to households in the District boundary. This survey data is then used to create the estimates shown in the tables below.

OJAI UNIFIED SCHOOL DISTRICT BOUNDARY % OF AGE GROUP ENROLLED IN SCHOOL

Age Group	2010	2011	2012	2013	2014	2015	2016	2017	2018	2019	2020	Trend
3-4	87.3%	83.8%	84.4%	61.6%	68.3%	67.8%	70.5%	73.5%	82.0%	70.8%	55.4%	
5-9	97.7%	98.9%	98.0%	97.2%	97.4%	98.0%	97.2%	97.9%	97.0%	91.7%	94.5%	
10-14	96.9%	96.8%	96.6%	97.9%	99.4%	99.4%	100.0%	100.0%	100.0%	100.0%	100.0%	
15-17	99.1%	98.7%	98.4%	98.7%	100.0%	100.0%	100.0%	100.0%	100.0%	100.0%	93.0%	
18-19	74.5%	76.6%	83.0%	84.6%	92.5%	93.2%	92.2%	84.0%	83.0%	56.4%	49.5%	

Source: U.S. Census American Community Survey 5-Year Estimates 2010, 2011, 2012, 2013, 2014, 2015, 2016, 2017, 2018, 2019, 2020

OJAI UNIFIED SCHOOL DISTRICT BOUNDARY % OF AGE GROUP ENROLLED IN SCHOOL ATTENDING PUBLIC SCHOOL

Age Group	2010	2011	2012	2013	2014	2015	2016	2017	2018	2019	2020	Trend
3-4	51.9%	36.7%	44.7%	38.0%	26.3%	38.0%	42.6%	20.4%	20.8%	24.8%	26.9%	
5-9	75.8%	76.0%	86.6%	86.3%	85.6%	81.0%	72.8%	67.9%	63.9%	69.9%	70.6%	
10-14	86.5%	81.6%	76.2%	74.4%	78.1%	80.0%	77.7%	81.6%	74.2%	75.6%	76.7%	
15-17	90.3%	80.9%	78.5%	79.3%	70.8%	71.1%	76.2%	82.0%	83.6%	87.8%	89.0%	
18-19	88.4%	95.4%	96.8%	93.4%	83.8%	80.7%	79.8%	79.3%	89.5%	88.7%	86.6%	

Source: U.S. Census American Community Survey 5-Year Estimates 2010, 2011, 2012, 2013, 2014, 2015, 2016, 2017, 2018, 2019, 2020

OJAI UNIFIED SCHOOL DISTRICT BOUNDARY % OF AGE GROUP ENROLLED IN SCHOOL ATTENDING PRIVATE SCHOOL

Age Group	2010	2011	2012	2013	2014	2015	2016	2017	2018	2019	2020	Trend
3-4	48.1%	63.3%	55.3%	62.0%	73.7%	62.0%	57.4%	79.6%	79.2%	75.2%	73.1%	
5-9	24.2%	24.0%	13.4%	13.8%	14.4%	19.0%	27.2%	32.1%	36.1%	30.1%	29.4%	
10-14	13.5%	18.4%	23.8%	25.6%	21.9%	20.0%	22.3%	18.4%	25.8%	24.4%	23.3%	
15-17	9.7%	19.1%	21.5%	20.7%	29.2%	28.9%	23.8%	18.0%	16.4%	12.2%	11.0%	
18-19	11.6%	4.6%	3.2%	6.6%	16.2%	19.3%	20.2%	20.7%	10.5%	11.3%	13.4%	

Source: U.S. Census American Community Survey 5-Year Estimates 2010, 2011, 2012, 2013, 2014, 2015, 2016, 2017, 2018, 2019, 2020

GENERAL DEMOGRAPHICS

The following information represents block group estimates created from market research and U.S. Census data obtained from the Environmental Systems Research Institute [ESRI]. ESRI provides a yearly update to their demographic data in increments of five years. To make updates to their demographic data set, they use American Community Survey [ACS] data that takes a series of monthly sample surveys but only from areas with populations of 65,000 or more. One year of ACS data is a period estimate as a twelve-month average, rather than a single point in time.

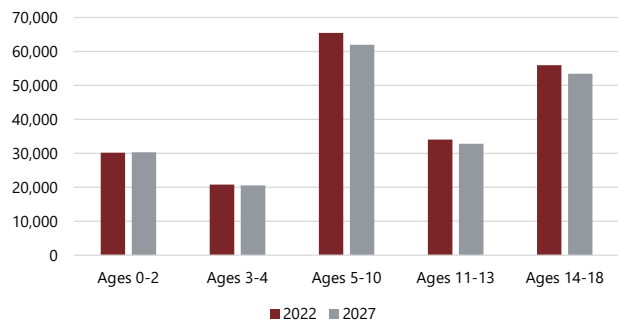
According to the ESRI estimates, the total population of Ventura County is estimated to decrease over the next five years. As illustrated in the table below, the number of children, ages 5-18, is estimated to decrease by 7,173 children, or approximately 5 percent.

**VENTURA COUNTY
POPULATION ESTIMATES**

Age Group	2022	2027	Change	% Change
Ages 0-2	30,161	30,311	150	0%
Ages 3-4	20,806	20,535	-271	-1%
Ages 5-10	65,421	61,974	-3,447	-5%
Ages 11-13	34,033	32,804	-1,229	-4%
Ages 14-18	55,929	53,432	-2,497	-4%
Ages 5-18	155,383	148,210	-7,173	-5%
Total Population	843,077	839,781	-3,296	0%

Source: ESRI BIS

**VENTURA COUNTY
POPULATION ESTIMATES**

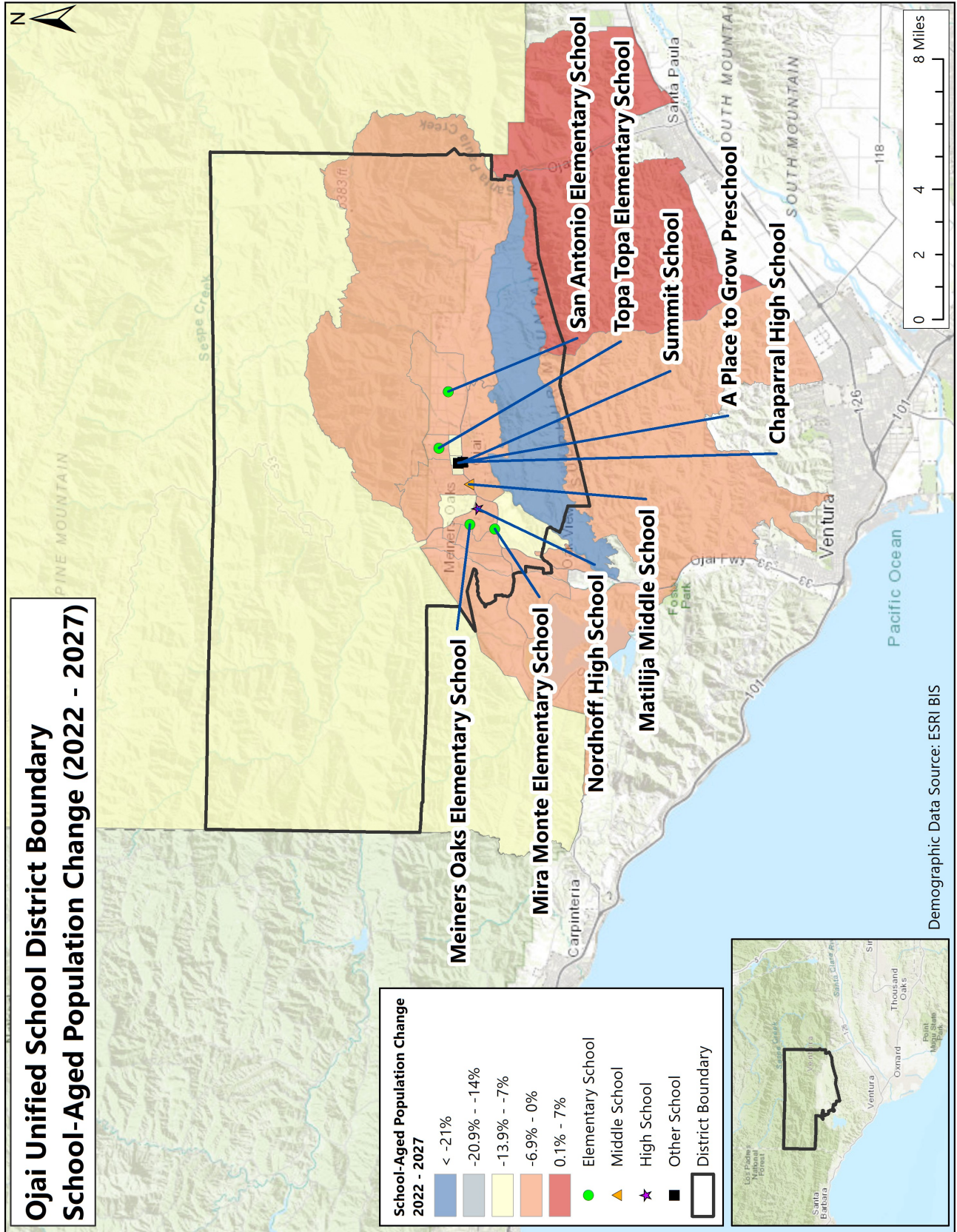


OJAI UNIFIED SCHOOL DISTRICT BOUNDARY ESTIMATED SCHOOL-AGED POPULATION CHANGE 2022-2027

The map on the following page shows school-aged population change in the U.S. Census block groups within / around the Ojai Unified School District boundary. Population changes are based on 2022 and 2027 estimates.

A block group is defined by the U.S. Census Bureau as, "a statistical district of a census tract, generally defined to contain between 600 and 3,000 people and 240 and 1,200 housing units, and the smallest geographic unit for which the Census Bureau tabulates sample data."

Ojai Unified School District Boundary School-Aged Population Change (2022 - 2027)



HOUSING DATA

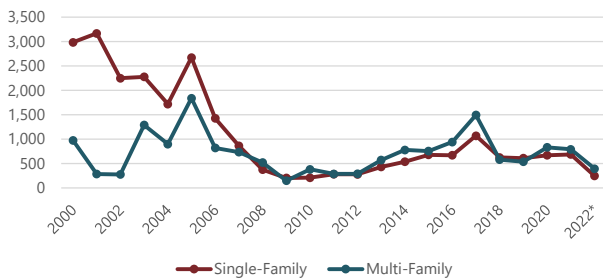
Housing development and building permits are tracked to determine their effect on student enrollment. The table and graph below illustrate the number of single- and multi-family building permits issued in Ventura County and Ojai city since 2000.

BUILDING PERMITS				
VENTURA COUNTY			OJAI CITY	
Year	Single-Family	Multi-Family	Single-Family	Multi-Family
2000	2,984	976	11	0
2001	3,168	285	4	0
2002	2,249	276	30	0
2003	2,278	1,289	33	0
2004	1,719	898	3	0
2005	2,673	1,838	8	0
2006	1,426	818	6	0
2007	862	733	8	0
2008	374	519	8	0
2009	204	148	4	0
2010	209	381	4	0
2011	281	287	6	0
2012	278	288	6	0
2013	430	571	7	0
2014	536	778	6	0
2015	678	755	3	0
2016	669	940	1	0
2017	1,070	1,495	1	0
2018	625	579	10	0
2019	609	537	15	6
2020	669	832	26	0
2021	686	791	21	0
2022*	245	393	18	0

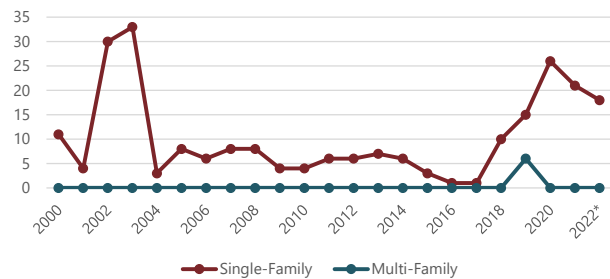
Source: SOCDs Building Permits Database

*preliminary through June 2022

**VENTURA COUNTY
BUILDING PERMITS**



**OJAI CITY
BUILDING PERMITS**



RESIDENT LIVE BIRTH DATA

Utilization of resident live birth data is recommended when projecting future kindergarten enrollments. This data provides a helpful overall trend. Large bubbles in birth counts, either up or down, can also be planned for or anticipated by the District.

In addition, the live birth counts are used in determining a birth-to-kindergarten and birth-to-first grade survival ratio. This ratio identifies the percentage of children born in a representative area who attend kindergarten and first grade in the District five and six years later. The survival ratios for birth-to-kindergarten, birth-to-first grade, as well as grades 1-12 can be found on page 26 of this report.

Data is arranged by the residence of the mother. For example, if a mother lives in Ojai but delivers her baby in Los Angeles, the birth is counted in Ojai. Live birth counts are different from live birth rates. The live birth count is simply the actual number of live births. A birth rate is the number of births per 1,000 women in a specified population group.

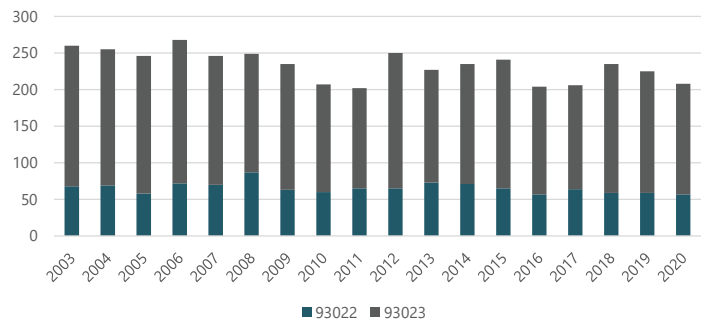
The table and graph include the resident live birth counts for ZIP codes 93001, 93022, 93023, and 93060. Upon analysis of the map on the following page, only live birth counts for ZIP code 93022 and 93023 were used in the development of the enrollment projections.

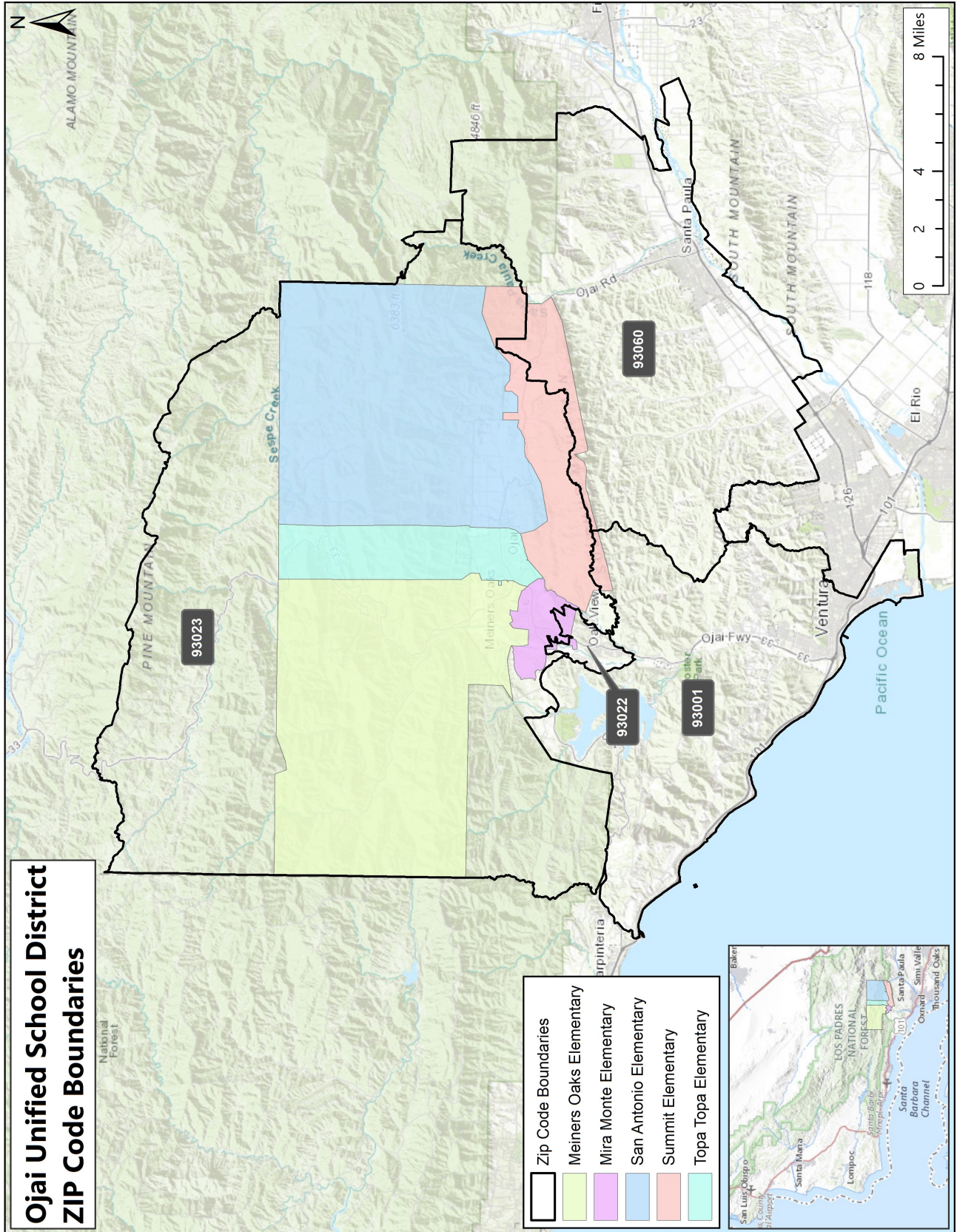
OJAI UNIFIED SCHOOL DISTRICT ZIP CODES RESIDENT LIVE BIRTH COUNTS

Year	93001	93022	93023	93060
2003	506	68	192	629
2004	504	69	186	594
2005	499	58	188	635
2006	460	72	196	651
2007	448	70	176	643
2008	485	87	162	564
2009	425	63	172	578
2010	399	60	147	501
2011	392	65	137	490
2012	419	65	185	498
2013	415	73	154	516
2014	418	71	164	502
2015	421	65	176	491
2016	365	57	147	442
2017	359	64	142	435
2018	315	59	176	423
2019	343	59	166	434
2020	300	57	151	427

Source: California Department of Public Health

OJAI UNIFIED SCHOOL DISTRICT ZIP CODES RESIDENT LIVE BIRTH COUNTS





SURVIVAL RATIOS

The chart below demonstrates the ten-year changes in enrollment as students move through the system. Percentages greater than 100 indicate that there are more students than there were in the previous grade the previous year. In other words, there was an increase in student population where new students were added to the system. Percentages less than 100 indicate that there was decline or students left the system. If the exact number of students in 1st grade during the 2014-15 school year were present in 2nd grade for the 2015-16 school year, the survival ratio would be 100 percent.

Birth-to-Kindergarten and Birth-to-First Grade: This ratio indicates the number of children born in the area who attend kindergarten and first grade in the district five and six years later. What is important to note is the trend in survival ratios, not necessarily the actual number.

Grades 8 to 9: The higher than usual percentage may be a result of school district promotion policies. Often in school districts, students are promoted from 8th to 9th grade and after one year in 9th grade do not have sufficient credits to be classified as a 10th grader and are counted again as 9th graders the following year. There may also be students who are attending private or charter schools or are home schooled through grade 8 and then attend public schools for high school education.

The COVID-19 pandemic introduced an unforeseen level of volatility, nationwide, as seen in the survival ratios for the 2019-20 to 2020-21 and 2020-21 to 2021-22 school years. These ratios will need to be monitored closely over the next few years as new trends are established.

The following table illustrates the historical survival ratios in the Ojai Unified School District over the past ten years by grade level.

Survival Ratios - District-wide

from	to	Birth to K	K to 1	Birth to 1	1 to 2	2 to 3	3 to 4	4 to 5	5 to 6	6 to 7	7 to 8	8 to 9	9 to 10	10 to 11	11 to 12
2012-13	2013-14	65.06%	95.24%	65.04%	99.49%	90.55%	98.67%	102.36%	99.53%	98.00%	103.15%	90.67%	98.78%	90.86%	94.52%
2013-14	2014-15	72.34%	106.17%	69.08%	105.63%	100.00%	101.65%	101.80%	97.70%	104.74%	98.98%	85.59%	94.12%	90.91%	99.44%
2014-15	2015-16	74.88%	98.24%	71.06%	96.51%	105.33%	107.11%	98.38%	102.21%	101.42%	98.64%	96.91%	98.98%	95.31%	87.73%
2015-16	2016-17	79.70%	100.65%	75.36%	98.20%	100.00%	104.49%	98.58%	101.65%	97.40%	102.79%	94.95%	89.89%	83.51%	92.90%
2016-17	2017-18	65.20%	104.35%	83.17%	98.72%	97.56%	101.20%	101.61%	100.96%	100.54%	100.00%	94.57%	93.24%	95.27%	103.09%
2017-18	2018-19	61.67%	98.77%	64.40%	101.19%	96.10%	107.50%	97.62%	99.47%	96.67%	100.54%	87.11%	98.56%	91.71%	97.52%
2018-19	2019-20	59.57%	106.43%	65.64%	97.52%	102.35%	106.76%	101.16%	100.61%	102.13%	101.97%	101.07%	101.53%	93.69%	90.96%
2019-20	2020-21	58.51%	102.14%	60.85%	94.63%	92.99%	93.10%	91.77%	91.95%	92.12%	96.88%	99.03%	94.18%	91.46%	94.82%
2020-21	2021-22	65.69%	95.74%	56.02%	90.21%	101.42%	91.78%	91.36%	102.07%	100.00%	101.32%	106.45%	97.56%	98.88%	103.85%
mean simple all years		66.96%	100.86%	67.85%	98.01%	98.48%	101.36%	98.29%	99.57%	99.22%	100.47%	95.15%	96.32%	92.40%	96.09%
std. dev. simple all years		7.21%	4.21%	8.04%	4.27%	4.67%	5.88%	4.17%	3.20%	3.67%	2.07%	6.68%	3.66%	4.26%	5.40%
mean simple 5 years		62.13%	101.49%	66.01%	96.45%	98.09%	100.07%	96.70%	99.01%	98.29%	100.14%	97.65%	97.01%	94.20%	98.05%
std. dev. simple 5 years		3.24%	4.28%	10.29%	4.21%	3.86%	7.39%	4.94%	4.05%	3.98%	1.97%	7.27%	3.37%	3.04%	5.48%
mean simple 3 years		61.26%	101.44%	60.84%	94.12%	98.92%	97.21%	94.76%	98.21%	98.08%	100.05%	102.18%	97.76%	94.67%	96.54%
std. dev. simple 3 years		3.87%	5.38%	4.81%	3.68%	5.16%	8.29%	5.55%	5.47%	5.27%	2.77%	3.83%	3.68%	3.81%	6.61%
mean simple 2 years		62.10%	98.94%	58.43%	92.42%	97.21%	92.44%	91.57%	97.01%	96.06%	99.10%	102.74%	95.87%	95.17%	99.33%
std. dev. simple 2 years		5.08%	4.52%	3.42%	3.13%	5.96%	0.94%	0.29%	7.15%	5.57%	3.14%	5.25%	2.39%	5.25%	6.38%
mean weighted all years		63.86%	100.31%	63.34%	95.21%	98.70%	98.20%	95.37%	99.08%	98.26%	100.21%	99.44%	96.81%	94.21%	97.80%
std. dev. weighted all years		5.74%	4.25%	8.09%	4.37%	4.13%	7.12%	4.64%	4.18%	3.92%	2.11%	6.79%	3.21%	4.20%	5.60%
mean weighted 5 years		62.87%	99.07%	59.62%	93.08%	98.97%	95.08%	93.28%	99.13%	98.07%	100.18%	102.48%	97.12%	95.85%	99.60%
std. dev. weighted 5 years		3.65%	4.43%	5.92%	3.88%	4.22%	6.44%	4.04%	4.77%	4.08%	2.20%	5.81%	2.55%	3.78%	5.61%
mean weighted 3 years		64.19%	97.29%	57.24%	91.27%	99.98%	92.60%	91.82%	100.24%	98.70%	100.56%	104.94%	97.12%	97.37%	101.76%
std. dev. weighted 3 years		3.52%	3.73%	3.06%	2.57%	3.95%	3.56%	2.32%	4.69%	3.75%	2.09%	3.57%	1.91%	3.56%	4.97%
mean weighted 2 years		65.34%	96.05%	56.25%	90.42%	101.02%	91.84%	91.38%	101.59%	99.62%	101.10%	106.10%	97.40%	98.52%	103.42%
std. dev. weighted 2 years		2.16%	1.93%	1.46%	1.33%	2.54%	0.40%	0.12%	3.05%	2.37%	1.34%	2.23%	1.02%	2.23%	2.72%

OJAI UNIFIED SCHOOL DISTRICT HISTORICAL ENROLLMENT

As indicated in the table below, over the past ten years, student enrollment in the Ojai Unified School District has decreased by 572 students.

Historical Enrollment - District-wide

Grade	2012-13	2013-14	2014-15	2015-16	2016-17	2017-18	2018-19	2019-20	2020-21	2021-22
TK	21	35	36	36	40	35	57	49	38	28
K	168	162	170	155	161	163	140	140	141	134
1	198	160	172	167	156	168	161	149	143	135
2	201	197	169	166	164	154	170	157	141	129
3	225	182	197	178	166	160	148	174	146	143
4	212	222	185	211	186	168	172	158	162	134
5	212	217	226	182	208	189	164	174	145	148
6	200	211	212	231	185	210	188	165	160	148
7	222	196	221	215	225	186	203	192	152	160
8	225	229	194	218	221	225	187	207	186	154
9	245	204	196	188	207	209	196	189	205	198
10	197	242	192	194	169	193	206	199	178	200
11	219	179	220	183	162	161	177	193	182	176
12	211	207	178	193	170	167	157	161	183	189
Summit Independent School	0	0	0	0	0	0	0	6	113	134
Legacy HS	58	58	61	49	47	54	58	52	43	32
K - 12 Total	2,735	2,608	2,532	2,481	2,380	2,353	2,269	2,258	2,124	2,048
Grand Total	2,814	2,701	2,629	2,566	2,467	2,442	2,384	2,365	2,318	2,242

Source: Ojai Unified School District

Historical Enrollment - District-wide

Grade	2012-13	2013-14	2014-15	2015-16	2016-17	2017-18	2018-19	2019-20	2020-21	2021-22
TK	21	35	36	36	40	35	57	49	38	28
K - 5	1,216	1,140	1,119	1,059	1,041	1,002	955	952	878	823
6 - 8	647	636	627	664	631	621	578	564	498	462
9 - 12	872	832	786	758	708	730	736	742	748	763
Summit Independent School	0	0	0	0	0	0	0	6	113	134
Legacy HS	58	58	61	49	47	54	58	52	43	32
K - 12 Total	2,735	2,608	2,532	2,481	2,380	2,353	2,269	2,258	2,124	2,048
Grand Total	2,814	2,701	2,629	2,566	2,467	2,442	2,384	2,365	2,318	2,242

Source: Ojai Unified School District

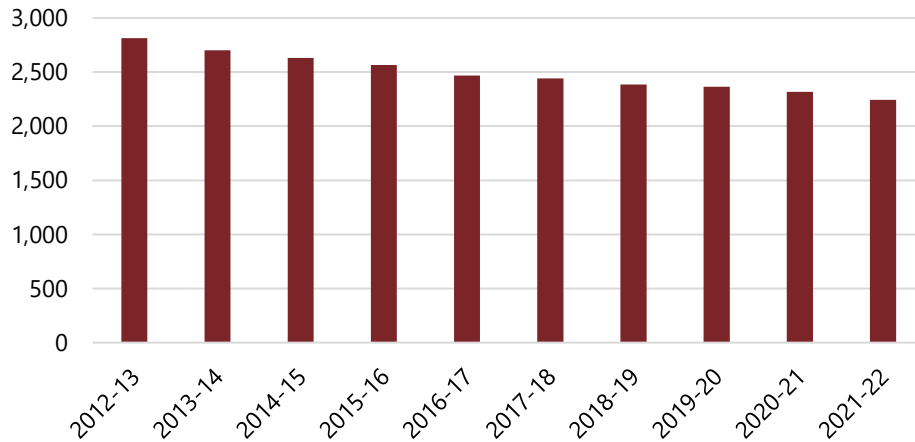
The varying shades of color in the table represent statistically significant cohort sizes. The darker blue represents smaller cohorts, while the darker red represents larger cohorts, comparatively.

Historical Enrollment - by School

School	2012-13	2013-14	2014-15	2015-16	2016-17	2017-18	2018-19	2019-20	2020-21	2021-22	Trend
Legacy HS	58	58	61	49	47	54	58	52	43	32	
Matilija MS	447	425	415	433	446	411	390	564	498	462	
Meiners Oaks ES	332	324	314	292	268	278	271	242	215	237	
Mira Monte ES	397	385	368	381	370	385	383	324	318	290	
Nordhoff HS	872	832	786	758	708	730	736	742	748	763	
San Antonio ES	154	114	152	155	161	153	178	149	133	97	
Summit ES	73	62	38	42	43	43	0	0	0	0	
Summit Independent School	0	0	0	0	0	0	0	6	113	134	
Topa Topa ES	481	501	495	456	424	388	368	286	250	227	
Grand Total	2,814	2,701	2,629	2,566	2,467	2,442	2,384	2,365	2,318	2,242	

Source: Ojai Unified School District

**HISTORICAL ENROLLMENT -
DISTRICT-WIDE**



Transfers - Out of District

The table and graph below show transfers out of the District; the table at the bottom of this page indicates students who were attending Ojai Unified School District on an Inter-district transfer as of 2021-22, according to data provided by the Ojai Unified School District.

TRANSFER STUDENTS (OUT OF DISTRICT)

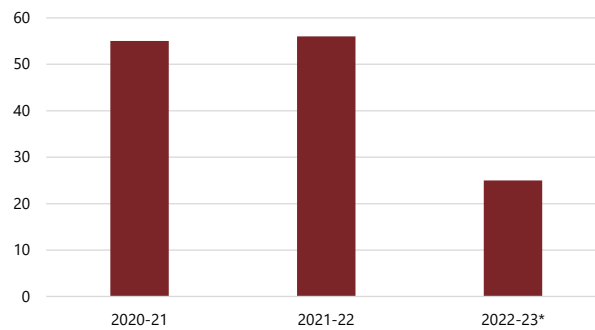
Grade	2020-21	2021-22	2022-23*
K	9	9	7
1	2	6	3
2	5	2	1
3	2	4	0
4	4	4	3
5	1	2	1
6	9	5	0
7	2	3	3
8	4	5	1
9	9	5	4
10	3	4	1
11	3	5	1
12	2	2	0
Grand Total	55	56	25

Source: Ojai Unified School District

*consists of transfer requests received as of June 2022

Note: This table includes students transferring out of the Ojai Unified School District

TRANSFER STUDENTS (OUT OF DISTRICT)



TRANSFER STUDENTS (INTO DISTRICT)

Grade	# of students
K	10
1	12
2	13
3	14
4	12
5	12
6	20
7	12
8	19
9	23
10	27
11	23
12	30
Grand Total	227

Source: Ojai Unified School District

Note: This table includes students who were attending Ojai Unified School District on an Inter-district transfer as of 2021-22

Charter Enrollment

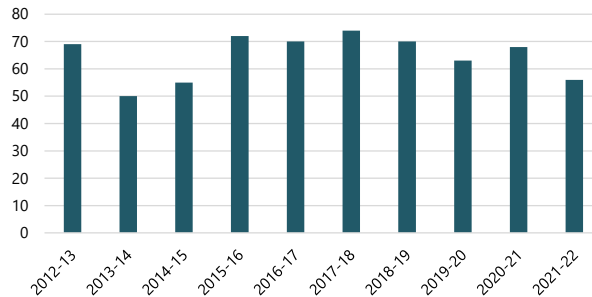
The table and graph below show that the enrollment of Valley Oak Charter School has fluctuated between 50 and 74 in the last 10 years, according to data provided by the Ojai Unified School District.

VALLEY OAK CHARTER SCHOOL ENROLLMENT

Grade	2012-13	2013-14	2014-15	2015-16	2016-17	2017-18	2018-19	2019-20	2020-21	2021-22
K	9	3	7	10	7	4	3	3	5	2
1	9	3	5	4	9	8	5	5	6	8
2	3	6	1	4	3	8	2	7	5	4
3	5	7	10	4	5	2	6	1	9	4
4	4	5	2	8	4	4	5	6	3	7
5	7	2	5	3	8	2	2	4	8	1
6	13	3	2	3	4	8	5	1	5	6
7	8	6	1	7	5	8	12	4	2	2
8	5	5	4	2	8	6	6	10	3	2
9	4	2	6	4	3	9	3	7	8	1
10	2	5	3	7	3	3	6	6	5	6
11	0	3	7	7	6	3	5	4	4	6
12	0	0	2	9	5	9	10	5	5	7
Grand Total	69	50	55	72	70	74	70	63	68	56

Source: Ojai Unified School District

VALLEY OAK CHARTER SCHOOL ENROLLMENT



PROJECTED ENROLLMENT

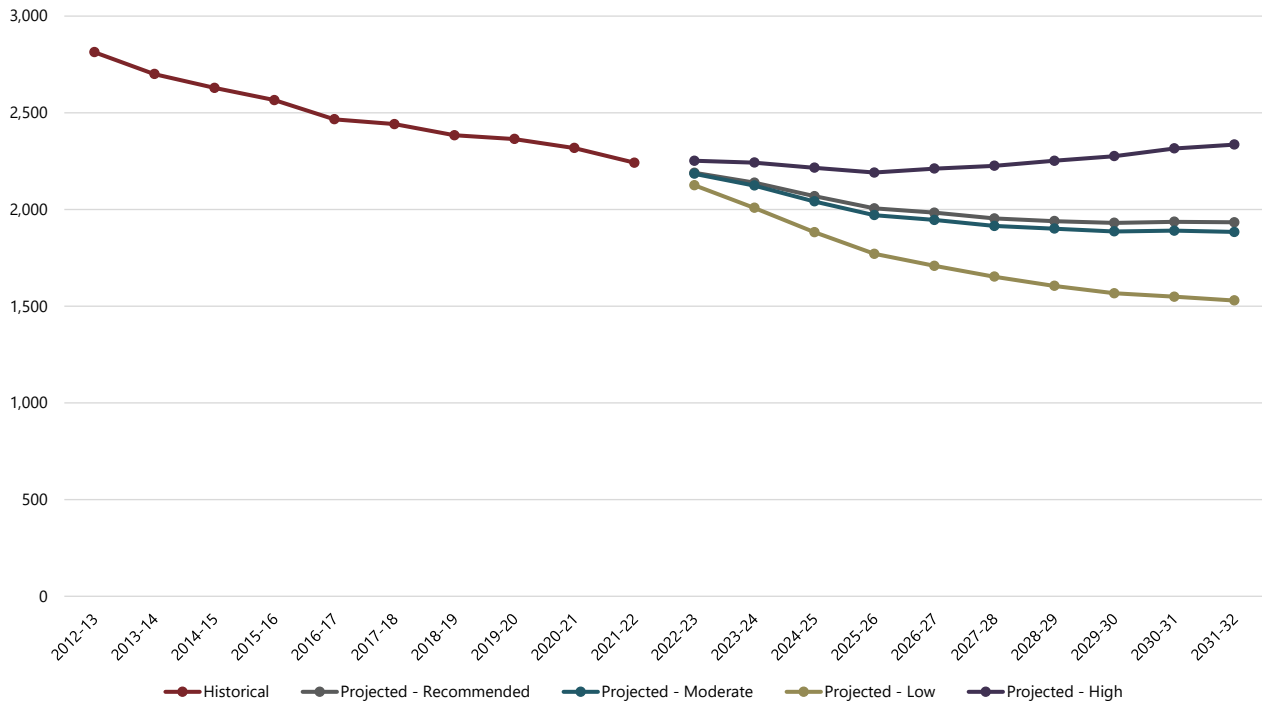
Cooperative Strategies developed low, moderate, high, and recommended enrollment projections for the Ojai Unified School District . The moderate enrollment projections are based on a selected average or weighted average of survival ratios (in this case, a 5-year simple average, by school). The low and high enrollment projections are developed using statistical distributional theory, providing the District with a more conservative (low) and more liberal (high) enrollment projection. The recommended enrollment projection is based on a detailed analysis of historical enrollment and resulting survival ratios over the past 10 years, by school. Significant shifts in survival ratio patterns are realized and accounted for in determining projection ratios independently for each grade level. The recommended illustrates the most likely direction of the District based on more recent trends.

The range of enrollment projections from low (conservative) to high (liberal) are offered due to the limitations of the cohort survival method in factoring changes to policies, program offerings, and future changes in housing and migration patterns. For example, the low enrollment projection might be used if housing declines significantly more than anticipated; the high enrollment projection might be used if housing growth increases at a more rapid rate than seen in recent years.

It should be noted that the actual live birth counts are available through 2020 and project kindergarten enrollment through 2025-26. To project kindergarten through 2031-32, a simple average of the last 3 years of live birth counts was used.

Projected TK enrollment does not follow the cohort survival method but is assumed to be 50% of the following year’s kindergarten enrollment for each year of the projection.

HISTORICAL & PROJECTED ENROLLMENT - OJAI UNIFIED SCHOOL DISTRICT



OJAI UNIFIED SCHOOL DISTRICT PROJECTED ENROLLMENT—RECOMMENDED

Based on the Recommended projected enrollment, student enrollment in the Ojai Unified School District is projected to decrease from 2,242 in the 2021-22 school year to 1,934 students in the 2031-32 school year.

Projected Enrollment - Recommended - District-wide

Grade	2022-23	2023-24	2024-25	2025-26	2026-27	2027-28	2028-29	2029-30	2030-31	2031-32
TK	74	71	65	71	71	71	71	71	71	71
K	125	146	140	129	138	138	138	138	138	138
1	140	128	151	145	134	143	143	143	143	143
2	130	136	126	149	142	129	138	138	138	138
3	128	131	136	125	147	140	128	139	139	139
4	143	128	131	137	125	147	140	129	140	140
5	130	140	126	128	134	122	144	137	126	136
6	145	129	138	123	126	131	120	142	135	124
7	145	143	127	135	121	124	129	118	139	133
8	160	146	143	127	136	121	124	129	119	139
9	155	162	147	144	128	137	122	125	130	120
10	192	151	157	143	140	124	133	119	121	126
11	188	181	142	148	134	132	117	125	112	114
12	169	181	174	136	142	129	127	112	120	107
Summit Independent School	134	134	134	134	134	134	134	134	134	134
Legacy HS	32	32	32	32	32	32	32	32	32	32
K - 12 Total	1,950	1,902	1,838	1,769	1,747	1,717	1,703	1,694	1,700	1,697
Grand Total	2,190	2,139	2,069	2,006	1,984	1,954	1,940	1,931	1,937	1,934

Source: Cooperative Strategies

Projected Enrollment - Recommended - District-wide

Grade	2022-23	2023-24	2024-25	2025-26	2026-27	2027-28	2028-29	2029-30	2030-31	2031-32
TK	74	71	65	71	71	71	71	71	71	71
K - 5	796	809	810	813	820	819	831	824	824	834
6 - 8	450	418	408	385	383	376	373	389	393	396
9 - 12	704	675	620	571	544	522	499	481	483	467
Summit Independent School	134	134	134	134	134	134	134	134	134	134
Legacy HS	32	32	32	32	32	32	32	32	32	32
K - 12 Total	1,950	1,902	1,838	1,769	1,747	1,717	1,703	1,694	1,700	1,697
Grand Total	2,190	2,139	2,069	2,006	1,984	1,954	1,940	1,931	1,937	1,934

Source: Cooperative Strategies

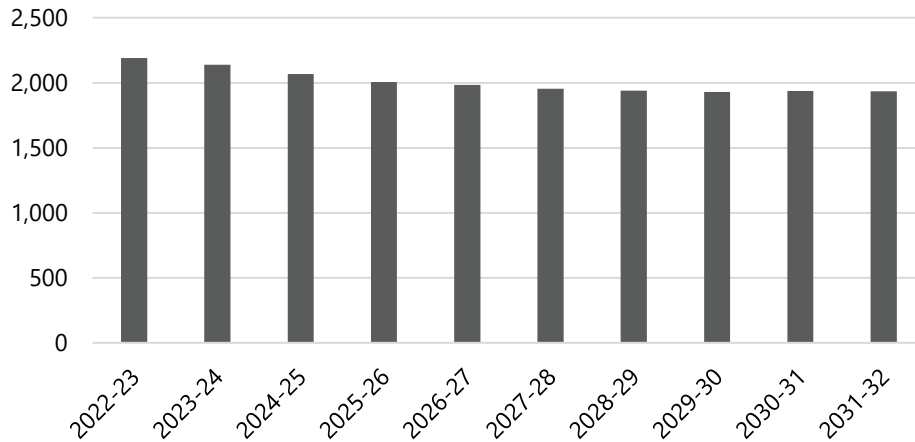
The varying shades of color in the table represent statistically significant cohort sizes. The darker blue represents smaller cohorts, while the darker red represents larger cohorts, comparatively.

Projected Enrollment - Recommended - by School

School	2022-23	2023-24	2024-25	2025-26	2026-27	2027-28	2028-29	2029-30	2030-31	2031-32	Trend
Legacy HS	32	32	32	32	32	32	32	32	32	32	
Matilija MS	450	418	408	385	383	376	373	389	393	396	
Meiners Oaks ES	243	251	248	250	253	239	241	239	240	242	
Mira Monte ES	286	293	294	301	302	303	306	304	303	306	
Nordhoff HS	704	675	620	571	544	522	499	481	483	467	
San Antonio ES	106	107	107	105	111	117	119	118	118	120	
Summit Independent School	134	134	134	134	134	134	134	134	134	134	
Topa Topa ES	235	229	226	228	225	231	236	234	234	237	
Grand Total	2,190	2,139	2,069	2,006	1,984	1,954	1,940	1,931	1,937	1,934	

Source: Cooperative Strategies

**PROJECTED ENROLLMENT - RECOMMENDED -
DISTRICT-WIDE**



OJAI UNIFIED SCHOOL DISTRICT PROJECTED ENROLLMENT—MODERATE

Based on the Moderate projected enrollment, student enrollment in the Ojai Unified School District is projected to decrease from 2,242 in the 2021-22 school year to 1,884 students in the 2031-32 school year.

Projected Enrollment - Moderate - District-wide

Grade	2022-23	2023-24	2024-25	2025-26	2026-27	2027-28	2028-29	2029-30	2030-31	2031-32
TK	74	71	65	70	70	70	70	70	70	70
K	125	147	140	129	138	138	138	138	138	138
1	138	126	150	143	132	142	142	142	142	142
2	130	134	123	146	138	126	137	137	137	137
3	128	128	133	122	144	137	126	135	135	135
4	143	129	129	133	124	144	137	126	137	137
5	128	139	123	125	129	119	140	134	122	131
6	145	127	137	121	123	127	117	137	131	120
7	145	143	125	135	119	121	125	115	135	129
8	160	146	143	125	135	119	121	125	115	135
9	150	156	142	140	122	132	117	119	123	112
10	192	146	152	138	136	119	128	113	115	119
11	188	181	137	143	130	128	112	120	107	108
12	173	185	177	135	140	127	125	110	118	105
Summit Independent School	134	134	134	134	134	134	134	134	134	134
Legacy HS	32	32	32	32	32	32	32	32	32	32
K - 12 Total	1,945	1,887	1,811	1,735	1,710	1,679	1,665	1,651	1,655	1,648
Grand Total	2,185	2,124	2,042	1,971	1,946	1,915	1,901	1,887	1,891	1,884

Source: Cooperative Strategies

Projected Enrollment - Moderate - District-wide

Grade	2022-23	2023-24	2024-25	2025-26	2026-27	2027-28	2028-29	2029-30	2030-31	2031-32
TK	74	71	65	70	70	70	70	70	70	70
K - 5	792	803	798	798	805	806	820	812	811	820
6 - 8	450	416	405	381	377	367	363	377	381	384
9 - 12	703	668	608	556	528	506	482	462	463	444
Summit Independent School	134	134	134	134	134	134	134	134	134	134
Legacy HS	32	32	32	32	32	32	32	32	32	32
K - 12 Total	1,945	1,887	1,811	1,735	1,710	1,679	1,665	1,651	1,655	1,648
Grand Total	2,185	2,124	2,042	1,971	1,946	1,915	1,901	1,887	1,891	1,884

Source: Cooperative Strategies

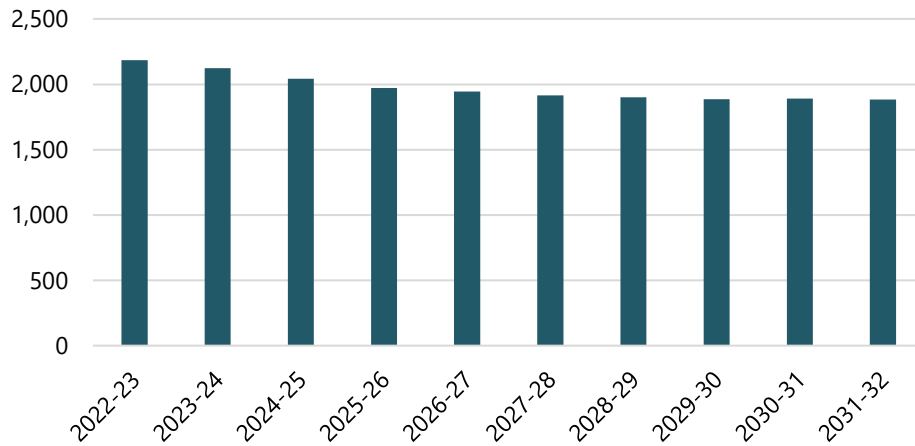
The varying shades of color in the table represent statistically significant cohort sizes. The darker blue represents smaller cohorts, while the darker red represents larger cohorts, comparatively.

Projected Enrollment - Moderate - by School

School	2022-23	2023-24	2024-25	2025-26	2026-27	2027-28	2028-29	2029-30	2030-31	2031-32	Trend
Legacy HS	32	32	32	32	32	32	32	32	32	32	
Matilija MS	450	416	405	381	377	367	363	377	381	384	
Meiners Oaks ES	245	255	253	255	260	248	251	248	248	251	
Mira Monte ES	283	286	284	289	290	290	293	291	290	293	
Nordhoff HS	703	668	608	556	528	506	482	462	463	444	
San Antonio ES	103	102	100	96	101	106	109	108	108	109	
Summit Independent School	134	134	134	134	134	134	134	134	134	134	
Topa Topa ES	235	231	226	228	224	232	237	235	235	237	
Grand Total	2,185	2,124	2,042	1,971	1,946	1,915	1,901	1,887	1,891	1,884	

Source: Cooperative Strategies

PROJECTED ENROLLMENT - MODERATE - DISTRICT-WIDE



OJAI UNIFIED SCHOOL DISTRICT PROJECTED ENROLLMENT—LOW

Based on the Low projected enrollment, student enrollment in the Ojai Unified School District is projected to decrease from 2,242 in the 2021-22 school year to 1,530 students in the 2031-32 school year.

Projected Enrollment - Low- District-wide

Grade	2022-23	2023-24	2024-25	2025-26	2026-27	2027-28	2028-29	2029-30	2030-31	2031-32
TK	70	66	62	65	65	65	65	65	65	65
K	117	138	131	121	130	130	130	130	130	130
1	134	116	137	131	120	129	129	129	129	129
2	127	125	109	128	122	112	120	120	120	120
3	121	118	117	102	119	115	105	112	112	112
4	135	115	112	112	97	114	108	100	108	108
5	124	126	105	104	103	91	105	101	93	100
6	142	118	120	101	100	100	86	101	96	89
7	143	137	114	116	97	97	96	83	98	93
8	159	142	136	113	115	96	96	95	82	97
9	145	150	134	128	107	109	91	91	90	78
10	189	139	143	128	122	102	104	87	87	86
11	186	176	129	133	119	114	95	96	81	80
12	168	177	168	123	127	113	109	91	92	77
Summit Independent School	134	134	134	134	134	134	134	134	134	134
Legacy HS	32	32	32	32	32	32	32	32	32	32
K - 12 Total	1,890	1,777	1,655	1,540	1,478	1,422	1,374	1,336	1,318	1,299
Grand Total	2,126	2,009	1,883	1,771	1,709	1,653	1,605	1,567	1,549	1,530

Source: Cooperative Strategies

Projected Enrollment - Low- District-wide

Grade	2022-23	2023-24	2024-25	2025-26	2026-27	2027-28	2028-29	2029-30	2030-31	2031-32
TK	70	66	62	65	65	65	65	65	65	65
K - 5	758	738	711	698	691	691	697	692	692	699
6 - 8	444	397	370	330	312	293	278	279	276	279
9 - 12	688	642	574	512	475	438	399	365	350	321
Summit Independent School	134	134	134	134	134	134	134	134	134	134
Legacy HS	32	32	32	32	32	32	32	32	32	32
K - 12 Total	1,890	1,777	1,655	1,540	1,478	1,422	1,374	1,336	1,318	1,299
Grand Total	2,126	2,009	1,883	1,771	1,709	1,653	1,605	1,567	1,549	1,530

Source: Cooperative Strategies

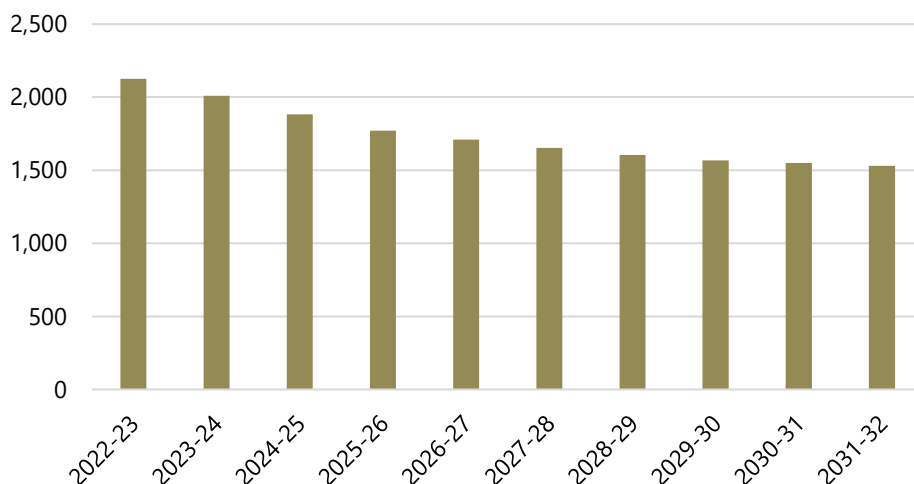
The varying shades of color in the table represent statistically significant cohort sizes. The darker blue represents smaller cohorts, while the darker red represents larger cohorts, comparatively.

Projected Enrollment - Low - by School

School	2022-23	2023-24	2024-25	2025-26	2026-27	2027-28	2028-29	2029-30	2030-31	2031-32	Trend
Legacy HS	32	32	32	32	32	32	32	32	32	32	
Matilija MS	444	397	370	330	312	293	278	279	276	279	
Meiners Oaks ES	231	229	216	211	210	199	200	199	199	201	
Mira Monte ES	274	269	263	264	262	264	265	264	263	265	
Nordhoff HS	688	642	574	512	475	438	399	365	350	321	
San Antonio ES	94	89	84	78	79	83	82	82	82	83	
Summit Independent School	134	134	134	134	134	134	134	134	134	134	
Topa Topa ES	229	217	210	210	205	210	215	212	213	215	
Grand Total	2,126	2,009	1,883	1,771	1,709	1,653	1,605	1,567	1,549	1,530	

Source: Cooperative Strategies

PROJECTED ENROLLMENT - LOW- DISTRICT-WIDE



OJAI UNIFIED SCHOOL DISTRICT PROJECTED ENROLLMENT—HIGH

Based on the High projected enrollment, student enrollment in the Ojai Unified School District is projected to increase from 2,242 in the 2021-22 school year to 2,336 students in the 2031-32 school year.

Projected Enrollment - High - District-wide

Grade	2022-23	2023-24	2024-25	2025-26	2026-27	2027-28	2028-29	2029-30	2030-31	2031-32
TK	78	75	70	74	74	74	74	74	74	74
K	132	155	148	137	147	147	147	147	147	147
1	143	140	164	157	144	155	155	155	155	155
2	133	142	139	164	156	142	155	155	155	155
3	135	139	149	144	171	163	150	160	160	160
4	152	143	148	158	155	182	172	158	172	172
5	136	154	145	150	160	156	183	175	161	173
6	149	136	155	146	151	162	157	185	176	162
7	148	149	136	155	146	151	162	157	185	176
8	162	150	151	138	157	147	152	163	159	187
9	155	163	151	152	139	158	148	154	165	160
10	195	153	161	149	150	137	156	146	151	163
11	191	186	146	154	142	143	131	149	140	145
12	177	192	187	147	154	143	144	132	150	141
Summit Independent School	134	134	134	134	134	134	134	134	134	134
Legacy HS	32	32	32	32	32	32	32	32	32	32
K - 12 Total	2,008	2,002	1,980	1,951	1,972	1,986	2,012	2,036	2,076	2,096
Grand Total	2,252	2,243	2,216	2,191	2,212	2,226	2,252	2,276	2,316	2,336

Source: Cooperative Strategies

Projected Enrollment - High - District-wide

Grade	2022-23	2023-24	2024-25	2025-26	2026-27	2027-28	2028-29	2029-30	2030-31	2031-32
TK	78	75	70	74	74	74	74	74	74	74
K - 5	831	873	893	910	933	945	962	950	950	962
6 - 8	459	435	442	439	454	460	471	505	520	525
9 - 12	718	694	645	602	585	581	579	581	606	609
Summit Independent School	134	134	134	134	134	134	134	134	134	134
Legacy HS	32	32	32	32	32	32	32	32	32	32
K - 12 Total	2,008	2,002	1,980	1,951	1,972	1,986	2,012	2,036	2,076	2,096
Grand Total	2,252	2,243	2,216	2,191	2,212	2,226	2,252	2,276	2,316	2,336

Source: Cooperative Strategies

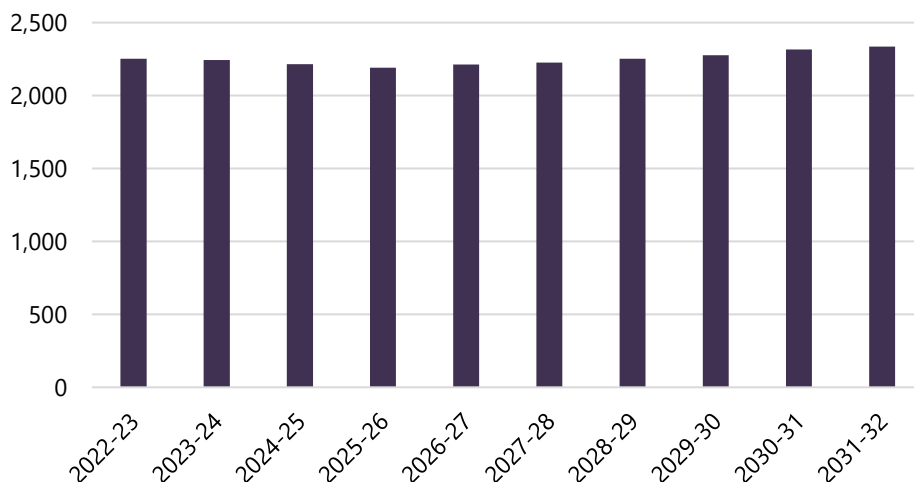
The varying shades of color in the table represent statistically significant cohort sizes. The darker blue represents smaller cohorts, while the darker red represents larger cohorts, comparatively.

Projected Enrollment - High - by School

School	2022-23	2023-24	2024-25	2025-26	2026-27	2027-28	2028-29	2029-30	2030-31	2031-32	Trend
Legacy HS	32	32	32	32	32	32	32	32	32	32	
Matilija MS	459	435	442	439	454	460	471	505	520	525	
Meiners Oaks ES	262	282	292	302	317	307	310	307	307	310	
Mira Monte ES	292	302	306	317	318	318	324	321	321	324	
Nordhoff HS	718	694	645	602	585	581	579	581	606	609	
San Antonio ES	112	119	121	117	126	138	140	138	138	140	
Summit Independent School	134	134	134	134	134	134	134	134	134	134	
Topa Topa ES	243	245	244	248	246	256	262	258	258	262	
Grand Total	2,252	2,243	2,216	2,191	2,212	2,226	2,252	2,276	2,316	2,336	

Source: Cooperative Strategies

PROJECTED ENROLLMENT - HIGH - DISTRICT-WIDE



ENROLLMENT BY SCHOOL

The following pages illustrate historical and projected enrollment by school of attendance.

MATILIJA MS 41

MEINERS OAKS ES 42

MIRA MONTE ES 43

NORDHOFF HS 44

SAN ANTONIO ES 45

SUMMIT ES 46

TOPA TOPA ES 47

MATILIJA MS

Historical Enrollment - Matilija MS

Grade	2012-13	2013-14	2014-15	2015-16	2016-17	2017-18	2018-19	2019-20	2020-21	2021-22
6	0	0	0	0	0	0	0	165	160	148
7	222	196	221	215	225	186	203	192	152	160
8	225	229	194	218	221	225	187	207	186	154
Grand Total	447	425	415	433	446	411	390	564	498	462

Source: Ojai Unified School District

Projected Enrollment - Recommended - Matilija MS

Grade	2022-23	2023-24	2024-25	2025-26	2026-27	2027-28	2028-29	2029-30	2030-31	2031-32
6	145	129	138	123	126	131	120	142	135	124
7	145	143	127	135	121	124	129	118	139	133
8	160	146	143	127	136	121	124	129	119	139
Grand Total	450	418	408	385	383	376	373	389	393	396

Source: Cooperative Strategies

Projected Enrollment - Moderate - Matilija MS

Grade	2022-23	2023-24	2024-25	2025-26	2026-27	2027-28	2028-29	2029-30	2030-31	2031-32
6	145	127	137	121	123	127	117	137	131	120
7	145	143	125	135	119	121	125	115	135	129
8	160	146	143	125	135	119	121	125	115	135
Grand Total	450	416	405	381	377	367	363	377	381	384

Source: Cooperative Strategies

Projected Enrollment - Low - Matilija MS

Grade	2022-23	2023-24	2024-25	2025-26	2026-27	2027-28	2028-29	2029-30	2030-31	2031-32
6	142	118	120	101	100	100	86	101	96	89
7	143	137	114	116	97	97	96	83	98	93
8	159	142	136	113	115	96	96	95	82	97
Grand Total	444	397	370	330	312	293	278	279	276	279

Source: Cooperative Strategies

Projected Enrollment - High - Matilija MS

Grade	2022-23	2023-24	2024-25	2025-26	2026-27	2027-28	2028-29	2029-30	2030-31	2031-32
6	149	136	155	146	151	162	157	185	176	162
7	148	149	136	155	146	151	162	157	185	176
8	162	150	151	138	157	147	152	163	159	187
Grand Total	459	435	442	439	454	460	471	505	520	525

Source: Cooperative Strategies

The varying shades of color in the table represent statistically significant cohort sizes. The darker blue represents smaller cohorts, while the darker red represents larger cohorts, comparatively.

MEINERS OAKS ES

Historical Enrollment - Meiners Oaks ES

Grade	2012-13	2013-14	2014-15	2015-16	2016-17	2017-18	2018-19	2019-20	2020-21	2021-22
TK	7	8	7	2	7	0	16	17	11	10
K	35	31	42	29	33	38	32	34	35	47
1	50	43	32	41	28	37	44	37	39	35
2	44	49	43	27	40	28	39	42	32	35
3	56	42	45	42	30	42	24	41	35	42
4	38	61	42	48	42	32	42	29	37	30
5	44	46	59	41	48	47	27	42	26	38
6	58	44	44	62	40	54	47	0	0	0
Grand Total	332	324	314	292	268	278	271	242	215	237

Source: Ojai Unified School District

Projected Enrollment - Recommended - Meiners Oaks ES

Grade	2022-23	2023-24	2024-25	2025-26	2026-27	2027-28	2028-29	2029-30	2030-31	2031-32
TK	19	18	17	18	18	18	18	18	18	18
K	33	37	36	33	35	35	35	35	35	35
1	52	36	41	40	37	39	39	39	39	39
2	33	50	35	40	38	35	37	37	37	37
3	35	34	50	35	40	38	35	38	38	38
4	42	35	34	51	35	40	38	35	38	38
5	29	41	35	33	50	34	39	37	35	37
Grand Total	243	251	248	250	253	239	241	239	240	242

Source: Cooperative Strategies

Projected Enrollment - Moderate - Meiners Oaks ES

Grade	2022-23	2023-24	2024-25	2025-26	2026-27	2027-28	2028-29	2029-30	2030-31	2031-32
TK	19	19	17	18	18	18	18	18	18	18
K	34	38	37	34	36	36	36	36	36	36
1	52	37	43	41	38	40	40	40	40	40
2	33	50	36	41	39	36	39	39	39	39
3	36	34	51	36	42	40	37	39	39	39
4	42	36	34	51	37	42	40	37	40	40
5	29	41	35	34	50	36	41	39	36	39
Grand Total	245	255	253	255	260	248	251	248	248	251

Source: Cooperative Strategies

Projected Enrollment - Low - Meiners Oaks ES

Grade	2022-23	2023-24	2024-25	2025-26	2026-27	2027-28	2028-29	2029-30	2030-31	2031-32
TK	17	17	15	16	16	16	16	16	16	16
K	30	34	33	30	32	32	32	32	32	32
1	51	33	37	36	33	35	35	35	35	35
2	32	47	30	34	33	30	32	32	32	32
3	33	30	44	28	32	31	28	30	30	30
4	40	31	28	41	26	30	29	27	29	29
5	28	37	29	26	38	25	28	27	25	27
Grand Total	231	229	216	211	210	199	200	199	199	201

Source: Cooperative Strategies

Projected Enrollment - High - Meiners Oaks ES

Grade	2022-23	2023-24	2024-25	2025-26	2026-27	2027-28	2028-29	2029-30	2030-31	2031-32
TK	21	20	19	20	20	20	20	20	20	20
K	37	42	40	37	40	40	40	40	40	40
1	54	42	48	46	43	46	46	46	46	46
2	35	53	42	48	46	42	45	45	45	45
3	39	38	59	46	53	51	47	50	50	50
4	45	41	41	63	50	57	54	50	54	54
5	31	46	43	42	65	51	58	56	52	55
Grand Total	262	282	292	302	317	307	310	307	307	310

Source: Cooperative Strategies

The varying shades of color in the table represent statistically significant cohort sizes. The darker blue represents smaller cohorts, while the darker red represents larger cohorts, comparatively.

MIRA MONTE ES

Historical Enrollment - Mira Monte ES

Grade	2012-13	2013-14	2014-15	2015-16	2016-17	2017-18	2018-19	2019-20	2020-21	2021-22
TK	9	12	12	19	20	22	28	24	14	15
K	50	45	46	49	56	53	47	47	50	46
1	58	45	52	48	49	60	48	47	47	46
2	50	59	47	52	43	51	61	50	48	39
3	64	43	59	47	50	40	54	57	51	45
4	50	65	40	60	54	55	39	58	54	43
5	67	48	63	39	59	49	55	41	54	56
6	49	68	49	67	39	55	51	0	0	0
Grand Total	397	385	368	381	370	385	383	324	318	290

Source: Ojai Unified School District

Projected Enrollment - Recommended - Mira Monte ES

Grade	2022-23	2023-24	2024-25	2025-26	2026-27	2027-28	2028-29	2029-30	2030-31	2031-32
TK	25	24	22	24	24	24	24	24	24	24
K	43	49	47	44	47	47	47	47	47	47
1	46	43	49	47	44	47	47	47	47	47
2	46	46	44	50	48	44	47	47	47	47
3	39	47	47	44	50	48	44	47	47	47
4	44	39	46	46	43	49	47	44	47	47
5	43	45	39	46	46	44	50	48	44	47
Grand Total	286	293	294	301	302	303	306	304	303	306

Source: Cooperative Strategies

Projected Enrollment - Moderate - Mira Monte ES

Grade	2022-23	2023-24	2024-25	2025-26	2026-27	2027-28	2028-29	2029-30	2030-31	2031-32
TK	25	24	22	24	24	24	24	24	24	24
K	43	49	47	44	47	47	47	47	47	47
1	45	42	48	46	43	46	46	46	46	46
2	46	45	42	48	46	42	45	45	45	45
3	38	44	44	41	47	45	41	44	44	44
4	44	38	44	43	41	46	44	41	44	44
5	42	44	37	43	42	40	46	44	40	43
Grand Total	283	286	284	289	290	290	293	291	290	293

Source: Cooperative Strategies

Projected Enrollment - Low - Mira Monte ES

Grade	2022-23	2023-24	2024-25	2025-26	2026-27	2027-28	2028-29	2029-30	2030-31	2031-32
TK	24	23	22	23	23	23	23	23	23	23
K	42	48	46	43	46	46	46	46	46	46
1	44	40	46	44	41	44	44	44	44	44
2	44	41	38	44	42	39	41	41	41	41
3	37	41	39	36	41	40	37	39	39	39
4	42	35	39	37	34	39	37	35	37	37
5	41	41	33	37	35	33	37	36	33	35
Grand Total	274	269	263	264	262	264	265	264	263	265

Source: Cooperative Strategies

Projected Enrollment - High - Mira Monte ES

Grade	2022-23	2023-24	2024-25	2025-26	2026-27	2027-28	2028-29	2029-30	2030-31	2031-32
TK	25	24	23	24	24	24	24	24	24	24
K	44	50	48	45	48	48	48	48	48	48
1	46	45	51	49	45	48	48	48	48	48
2	47	48	46	53	50	46	50	50	50	50
3	39	48	48	46	53	50	47	50	50	50
4	47	40	49	50	48	54	52	48	52	52
5	44	47	41	50	50	48	55	53	49	52
Grand Total	292	302	306	317	318	318	324	321	321	324

Source: Cooperative Strategies

The varying shades of color in the table represent statistically significant cohort sizes. The darker blue represents smaller cohorts, while the darker red represents larger cohorts, comparatively.

NORDHOFF HS

Historical Enrollment - Nordhoff HS

Grade	2012-13	2013-14	2014-15	2015-16	2016-17	2017-18	2018-19	2019-20	2020-21	2021-22
9	245	204	196	188	207	209	196	189	205	198
10	197	242	192	194	169	193	206	199	178	200
11	219	179	220	183	162	161	177	193	182	176
12	211	207	178	193	170	167	157	161	183	189
Grand Total	872	832	786	758	708	730	736	742	748	763

Source: Ojai Unified School District

Projected Enrollment - Recommended - Nordhoff HS

Grade	2022-23	2023-24	2024-25	2025-26	2026-27	2027-28	2028-29	2029-30	2030-31	2031-32
9	155	162	147	144	128	137	122	125	130	120
10	192	151	157	143	140	124	133	119	121	126
11	188	181	142	148	134	132	117	125	112	114
12	169	181	174	136	142	129	127	112	120	107
Grand Total	704	675	620	571	544	522	499	481	483	467

Source: Cooperative Strategies

Projected Enrollment - Moderate - Nordhoff HS

Grade	2022-23	2023-24	2024-25	2025-26	2026-27	2027-28	2028-29	2029-30	2030-31	2031-32
9	150	156	142	140	122	132	117	119	123	112
10	192	146	152	138	136	119	128	113	115	119
11	188	181	137	143	130	128	112	120	107	108
12	173	185	177	135	140	127	125	110	118	105
Grand Total	703	668	608	556	528	506	482	462	463	444

Source: Cooperative Strategies

Projected Enrollment - Low - Nordhoff HS

Grade	2022-23	2023-24	2024-25	2025-26	2026-27	2027-28	2028-29	2029-30	2030-31	2031-32
9	145	150	134	128	107	109	91	91	90	78
10	189	139	143	128	122	102	104	87	87	86
11	186	176	129	133	119	114	95	96	81	80
12	168	177	168	123	127	113	109	91	92	77
Grand Total	688	642	574	512	475	438	399	365	350	321

Source: Cooperative Strategies

Projected Enrollment - High - Nordhoff HS

Grade	2022-23	2023-24	2024-25	2025-26	2026-27	2027-28	2028-29	2029-30	2030-31	2031-32
9	155	163	151	152	139	158	148	154	165	160
10	195	153	161	149	150	137	156	146	151	163
11	191	186	146	154	142	143	131	149	140	145
12	177	192	187	147	154	143	144	132	150	141
Grand Total	718	694	645	602	585	581	579	581	606	609

Source: Cooperative Strategies

The varying shades of color in the table represent statistically significant cohort sizes. The darker blue represents smaller cohorts, while the darker red represents larger cohorts, comparatively.

SAN ANTONIO ES

Historical Enrollment - San Antonio ES

Grade	2012-13	2013-14	2014-15	2015-16	2016-17	2017-18	2018-19	2019-20	2020-21	2021-22
TK	4	2	6	4	10	13	8	2	4	3
K	14	10	23	24	18	22	22	22	15	11
1	12	13	15	17	22	16	24	24	22	12
2	26	14	18	16	16	21	20	23	24	22
3	25	22	17	27	17	18	26	24	24	18
4	25	20	30	22	29	17	25	28	22	18
5	17	21	23	27	20	28	19	26	22	13
6	31	12	20	18	29	18	34	0	0	0
Grand Total	154	114	152	155	161	153	178	149	133	97

Source: Ojai Unified School District

Projected Enrollment - Recommended - San Antonio ES

Grade	2022-23	2023-24	2024-25	2025-26	2026-27	2027-28	2028-29	2029-30	2030-31	2031-32
TK	10	10	9	10	10	10	10	10	10	10
K	17	20	19	18	19	19	19	19	19	19
1	11	16	20	19	17	18	18	18	18	18
2	12	11	16	20	19	17	18	18	18	18
3	22	12	11	16	20	19	17	19	19	19
4	18	22	12	11	16	20	19	17	19	19
5	16	16	20	11	10	14	18	17	15	17
Grand Total	106	107	107	105	111	117	119	118	118	120

Source: Cooperative Strategies

Projected Enrollment - Moderate - San Antonio ES

Grade	2022-23	2023-24	2024-25	2025-26	2026-27	2027-28	2028-29	2029-30	2030-31	2031-32
TK	10	9	9	9	9	9	9	9	9	9
K	16	20	18	17	18	18	18	18	18	18
1	10	14	18	17	15	17	17	17	17	17
2	12	10	14	18	17	15	17	17	17	17
3	22	12	10	15	18	17	16	17	17	17
4	18	22	12	10	15	18	17	15	17	17
5	15	15	19	10	9	12	15	15	13	14
Grand Total	103	102	100	96	101	106	109	108	108	109

Source: Cooperative Strategies

Projected Enrollment - Low - San Antonio ES

Grade	2022-23	2023-24	2024-25	2025-26	2026-27	2027-28	2028-29	2029-30	2030-31	2031-32
TK	9	8	8	8	8	8	8	8	8	8
K	14	17	16	15	16	16	16	16	16	16
1	9	12	15	14	13	14	14	14	14	14
2	12	9	12	14	13	12	13	13	13	13
3	20	11	8	11	13	13	11	12	12	12
4	16	19	10	8	10	12	11	10	11	11
5	14	13	15	8	6	8	9	9	8	9
Grand Total	94	89	84	78	79	83	82	82	82	83

Source: Cooperative Strategies

Projected Enrollment - High - San Antonio ES

Grade	2022-23	2023-24	2024-25	2025-26	2026-27	2027-28	2028-29	2029-30	2030-31	2031-32
TK	11	11	10	10	10	10	10	10	10	10
K	18	22	21	19	20	20	20	20	20	20
1	11	17	21	20	18	20	20	20	20	20
2	12	11	18	22	21	19	21	21	21	21
3	24	14	12	19	24	23	21	22	22	22
4	19	26	15	13	21	26	24	22	24	24
5	17	18	24	14	12	20	24	23	21	23
Grand Total	112	119	121	117	126	138	140	138	138	140

Source: Cooperative Strategies

The varying shades of color in the table represent statistically significant cohort sizes. The darker blue represents smaller cohorts, while the darker red represents larger cohorts, comparatively.

SUMMIT ES

Historical Enrollment - Summit ES

Grade	2012-13	2013-14	2014-15	2015-16	2016-17	2017-18
TK	0	0	0	1	3	0
K	18	7	0	7	4	9
1	12	13	5	4	7	2
2	8	11	7	7	3	7
3	10	7	10	6	5	2
4	8	9	4	13	7	4
5	8	8	5	1	13	8
6	9	7	7	3	1	11
Grand Total	73	62	38	42	43	43

Source: Ojai Unified School District

The varying shades of color in the table represent statistically significant cohort sizes. The darker blue represents smaller cohorts, while the darker red represents larger cohorts, comparatively.

TOPA TOPA ES

Historical Enrollment - Topa Topa ES

Grade	2012-13	2013-14	2014-15	2015-16	2016-17	2017-18	2018-19	2019-20	2020-21	2021-22
TK	1	13	11	10	0	0	5	6	9	0
K	51	69	59	46	50	41	39	37	41	30
1	66	46	68	57	50	53	45	41	35	42
2	73	64	54	64	62	47	50	42	37	33
3	70	68	66	56	64	58	44	52	36	38
4	91	67	69	68	54	60	66	43	49	43
5	76	94	76	74	68	57	63	65	43	41
6	53	80	92	81	76	72	56	0	0	0
Grand Total	481	501	495	456	424	388	368	286	250	227

Source: Ojai Unified School District

Projected Enrollment - Recommended - Topa Topa ES

Grade	2022-23	2023-24	2024-25	2025-26	2026-27	2027-28	2028-29	2029-30	2030-31	2031-32
TK	20	19	17	19	19	19	19	19	19	19
K	32	40	38	34	37	37	37	37	37	37
1	31	33	41	39	36	39	39	39	39	39
2	39	29	31	39	37	33	36	36	36	36
3	32	38	28	30	37	35	32	35	35	35
4	39	32	39	29	31	38	36	33	36	36
5	42	38	32	38	28	30	37	35	32	35
Grand Total	235	229	226	228	225	231	236	234	234	237

Source: Cooperative Strategies

Projected Enrollment - Moderate - Topa Topa ES

Grade	2022-23	2023-24	2024-25	2025-26	2026-27	2027-28	2028-29	2029-30	2030-31	2031-32
TK	20	19	17	19	19	19	19	19	19	19
K	32	40	38	34	37	37	37	37	37	37
1	31	33	41	39	36	39	39	39	39	39
2	39	29	31	39	36	33	36	36	36	36
3	32	38	28	30	37	35	32	35	35	35
4	39	33	39	29	31	38	36	33	36	36
5	42	39	32	38	28	31	38	36	33	35
Grand Total	235	231	226	228	224	232	237	235	235	237

Source: Cooperative Strategies

Projected Enrollment - Low - Topa Topa ES

Grade	2022-23	2023-24	2024-25	2025-26	2026-27	2027-28	2028-29	2029-30	2030-31	2031-32
TK	20	18	17	18	18	18	18	18	18	18
K	31	39	36	33	36	36	36	36	36	36
1	30	31	39	37	33	36	36	36	36	36
2	39	28	29	36	34	31	34	34	34	34
3	31	36	26	27	33	31	29	31	31	31
4	37	30	35	26	27	33	31	28	31	31
5	41	35	28	33	24	25	31	29	27	29
Grand Total	229	217	210	210	205	210	215	212	213	215

Source: Cooperative Strategies

Projected Enrollment - High - Topa Topa ES

Grade	2022-23	2023-24	2024-25	2025-26	2026-27	2027-28	2028-29	2029-30	2030-31	2031-32
TK	21	20	18	20	20	20	20	20	20	20
K	33	41	39	36	39	39	39	39	39	39
1	32	36	44	42	38	41	41	41	41	41
2	39	30	33	41	39	35	39	39	39	39
3	33	39	30	33	41	39	35	38	38	38
4	41	36	43	32	36	45	42	38	42	42
5	44	43	37	44	33	37	46	43	39	43
Grand Total	243	245	244	248	246	256	262	258	258	262

Source: Cooperative Strategies

The varying shades of color in the table represent statistically significant cohort sizes. The darker blue represents smaller cohorts, while the darker red represents larger cohorts, comparatively.

CONCLUSION

As with any projection, the District should pay close attention to live birth counts, enrollment in elementary schools, open enrollment, non-public enrollment, in / out migration patterns, and any housing growth. It is recommended that this document be reviewed on an annual basis to determine how more recent growth and enrollment trends will impact the enrollment projections.

Cooperative Strategies is pleased to have had the opportunity to provide the District with this demographic study. We hope this document will provide the necessary information to make informed decisions about the future of the Ojai Unified School District.

APPENDIX LIVE/ATTEND ANALYSIS

The table below illustrates a live/attend analysis for the Ojai Unified School District. This table cross-references 2021-22 student enrollment and the attendance zone in which students reside. The numbers in bold denote students who live in the boundary of and attend their zoned school. Transfer-in denotes the number of students who transfer into a school from outside of the attendance zone. Transfer-out denotes the number of students that leave their zoned school to attend another school. Out of District indicates students who reside outside of the District.

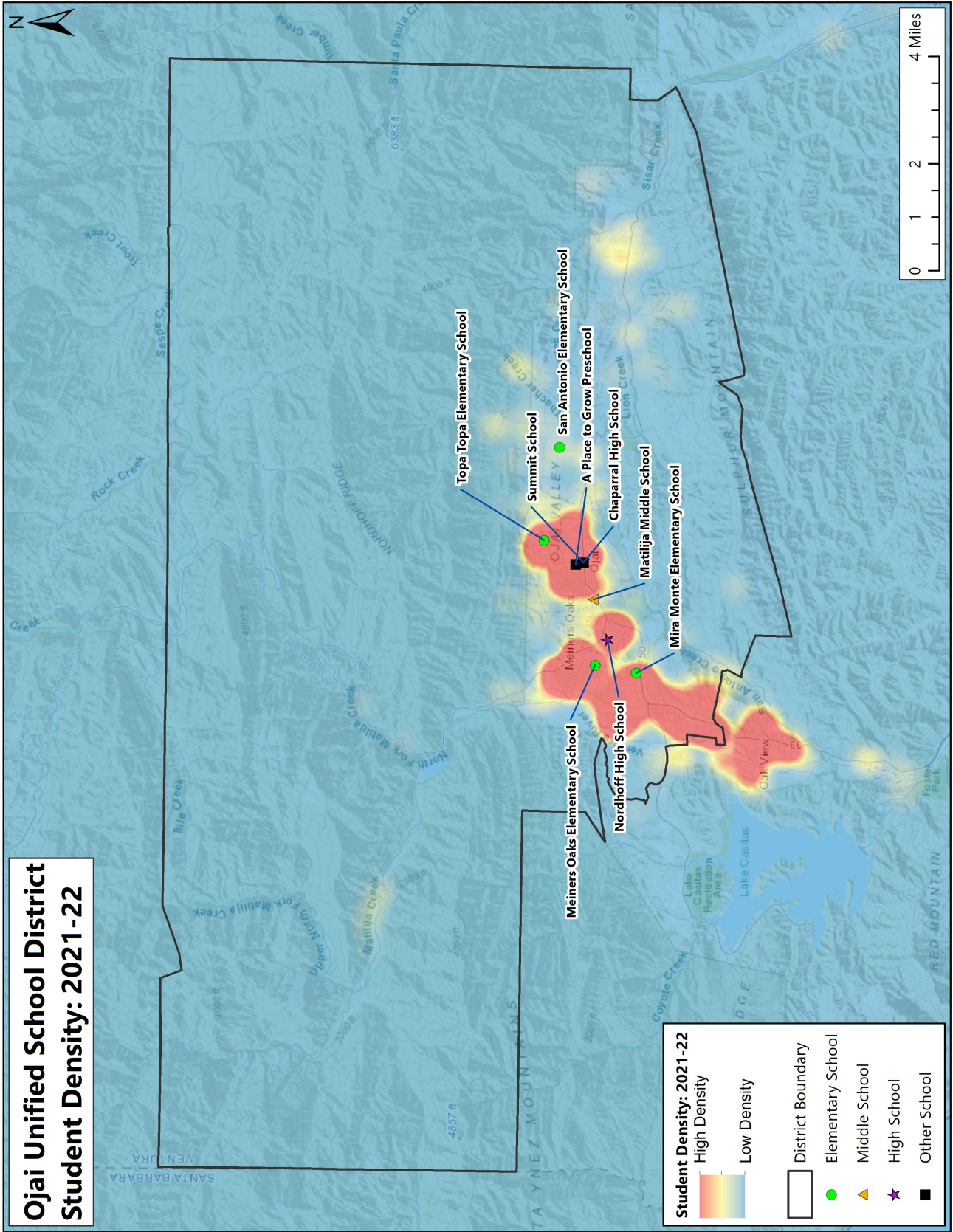
Ojai Unified School District 2021-22 Live/Attend		Attend School									Grand Total	Transfer-out	Transfer-out %
		Meiners Oaks ES	Mira Monte ES	San Antonio ES	Topa Topa ES	Matilija MS	Chaparral HS	Nordhoff HS	OUSD Non-Public School	Summit School			
Live Boundary	Meiners Oaks ES Boundary	152	50	18	30					14	264	112	42%
	Mira Monte ES Boundary	37	152	6	11					16	222	70	32%
	San Antonio ES Boundary*	4	2	24	14					7	51	27	53%
	Topa Topa ES Boundary	17	17	39	147					24	244	97	40%
	Matilija MS Boundary					393			1	28	422	29	7%
	Nordhoff HS Boundary						30	619		21	670	51	8%
	Out of District	27	69	10	25	69	2	144		24	370	-	-
	Grand Total	237	290	97	227	462	32	763	1	134	Total Students: 2,243		
	Live & Attend	152	152	24	147	393	-	619	-	-			
	Transfer-in	85	138	73	80	69	-	144	-	-			
Transfer-in %	36%	48%	75%	35%	15%	-	19%	-	-				

Data Source: Ojai Unified School District Student Data

*Students living within the Summit ES boundary are zoned to San Antonio ES

APPENDIX STUDENT DENSITY

The map on the following page demonstrates student density in the Ojai Unified School District. The darker blue areas indicate lower student density while the darker red areas indicate higher student density.



APPENDIX BOUNDARY MAP

The map on the following page illustrates the elementary school boundaries in the Ojai Unified School District. Students living within the Summit ES boundary are zoned to the San Antonio ES boundary.

