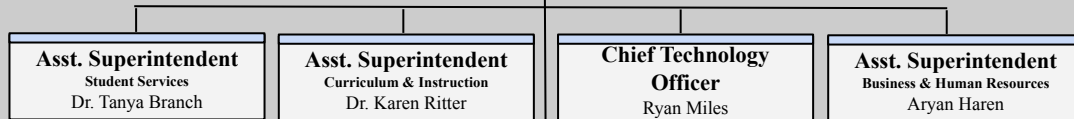




<b>Board President</b> Wayne Sobczak	<b>Vice President</b> Bruce Pagni	<b>Board Secretary</b> Sandy Jacobs	<b>Board Member</b> Bart Winkler	<b>Board Member</b> Cynthia Collins	<b>Board Member</b> Linda Carroll	<b>Board Member</b> Sue Dickson
---	--------------------------------------	--	-------------------------------------	--	--------------------------------------	------------------------------------

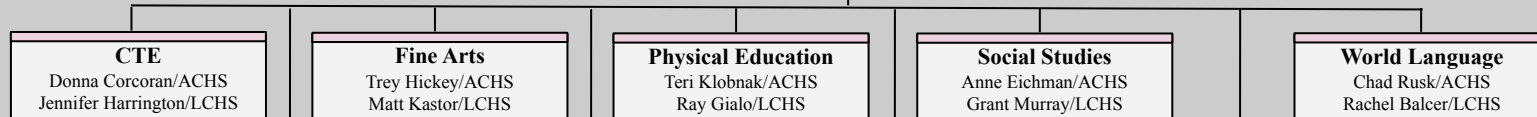
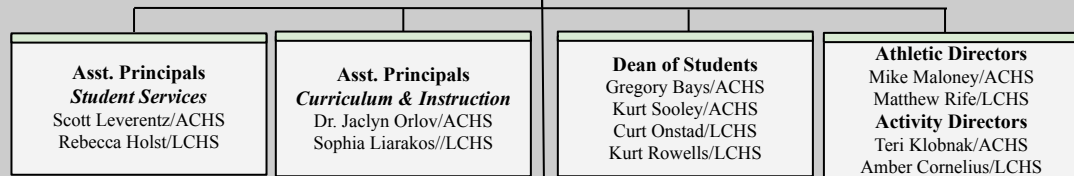
**Superintendent**  
Dr. Jeff Feucht



**Principals**  
Michael Berrie - ACHS  
Jori Bowen - LCHS

**Director of Human Resources**  
Chris Malec

**Facilities Manager**  
Ken Mlinsek



**English Dept.**  
Nicole Hebson/ACHS  
Kyle Naughton/LCHS

**Mathematics**  
Jill Farrell/ACHS  
Vikki Ecker/LCHS

**Science**  
William Barbanera/ACHS  
Callie Tillet/LCHS

**Special Education Coordinators**  
Randee Kallison /ACHS Fresh. & Soph.  
Jacqueline Selfridge/LCHS Fresh. & Soph.  
Andrew Seketa/Transition, Juniors, Seniors  
Jill Carasso - Specialist/LCHS  
Christina Jorgensen/LCHS 504 Specialist  
Brian Kelly/ACHS IEP Specialist



**Ignite Passion And Discovery In Every Student**