

The Division of Developmental Disabilities (DDD)

The Division of Developmental Disabilities (DDD)

NJ Department of Human Services

Our Service Delivery Partners

Provider Agencies – Direct services are administered by community-based provider agencies. Eventually, all services will be provided on a fee-for-service basis.

Department of Health (DOH) – The New Jersey Early Intervention System (NJEIS) within DOH, implements the statewide system of services for infants and toddlers, birth to age three, with developmental delays or disabilities, and their families. Call 1-888-653-4463 for more information.

Department of Children and Families (DCF) - Beginning 2013, DCF will provide all services for children with developmental disabilities until the age of 21. These services represent the entire continuum including information and referral, family support, one-time or ongoing intensive in-home or out-of-home services, etc. For more information call 1-855-463-6323.



Department of Education (DOE) and Local School Districts - The majority of services provided to children with developmental disabilities are provided by their local school districts as part of their educational entitlement (until age 21). An Individual Education Plan (IEP) should outline the educational and related supports needed by a child, including those that are necessary to prepare the child for adult life. To reach the Department's Office of Special Education, call 609-292-0147.

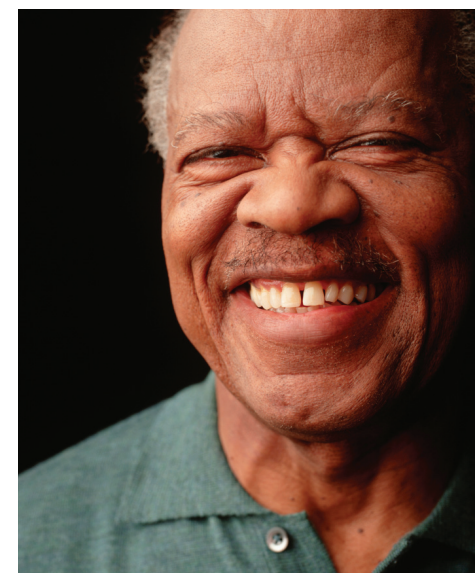
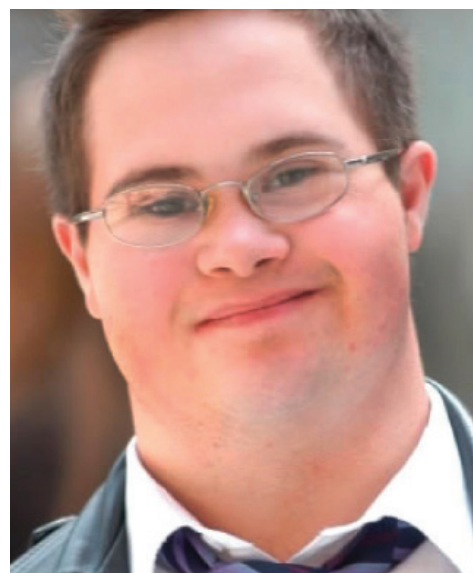
Department of Labor & Workforce Development (DLWD) - The Division of Vocational Rehabilitation Services (DVRS), within DLWD, provides vocational counseling and guidance, supported employment (SE), job accommodations, and vehicle or home modification if needed to reach a specific work goal. DDD's employment and day supports aim to supplement DVRS services. To locate a DVRS office in your area, go to: <http://lwd.dol.state.nj.us/labor/dvrs/>

Department of Human Services' Division of Medical Assistance and Health Services (DMAHS) and Division of Disability Services (DDS)- DMAHS is the state Medicaid agency. Medicaid-eligible adults can access their health care services through their Medicaid Managed Care Organization (MCO). Medicaid recipients also are eligible for Personal Care Assistance (PCA) and should contact their MCO to access these supports. A self-directed model known as "Personal Preference" can be used to deliver these supports. DDS administers Personal Preference and is the single point of entry for information and referral for disability services. Its toll free number is 1-888-285-3036.



Mission

The Division of Developmental Disabilities (DDD) assures the opportunity for individuals with developmental disabilities to receive quality services and supports, participate meaningfully in their communities and exercise their right to make choices.



Principles to Guide Service Delivery

- Ensure health and safety while respecting the rights of individuals
- Promote and expand community-based supports and services to avoid institutional, segregated and out-of-state services
- Ensure access to needed services from other state and local agencies
- Support provider agencies in achieving core principles
- Ensure that services are high in quality and culturally competent
- Ensure clear, consistent communication and responsiveness to stakeholders
- Promote collaboration and partnerships with individuals, families, providers and all other stakeholders
- Ensure financial accountability and compliance with all laws and ethical codes
- Promote individual choice, natural relationships and equity in the provision of supports and services

Beginning 2013...

...A New Vision for Support Across the Life Course

Transition (Ages 16 - 21)

Adult Services (21 and older)



DDD provides education and information to individuals and their families in preparation for adulthood. Direct services such as family support, residential services and educational services will be provided by the Department of Children and Families (DCF) and local school districts.

Types of Services Provided:

Transition Support: Prior to the receipt of adult services at age 21, DDD will provide transition planning, which consists of information dissemination and help with visioning for the future. After age 21, in addition to direct services, DDD will provide information and referral for services, as needed.



Transition planning includes informational sessions and educational materials related to a variety of topics including, but not limited to:

- o Employment and post-secondary education
- o Benefits/Legal/Financial Issues
 - Medicaid Eligibility
 - SSI
 - Guardianship
 - Special Needs Trusts
- o Housing and residential supports
- o Health/Behavioral Health
- o DDD Adult Services – Orientation to the Supports Program and CCW
- o Person-Centered Planning
- o Building a Social Network
- o Transportation



New Jersey is an *Employment First* state. Full, integrated, competitive employment is the preferred option for all individuals with disabilities.



1. Supports Program

ALL Medicaid-eligible individuals who also are eligible for DDD functional services will be able to access the Supports Program, unless they are enrolled on the Community Care Waiver. The Supports Program is a Medicaid program, which requires individuals to maintain their Medicaid eligibility in order to continue to participate.

Types of Services Provided:

- o **Employment/Day Supports:** DDD will provide employment services and other day supports to supplement employment when an individual's educational entitlement ends.
- o **Individual and Family Supports:** DDD will provide self-directed individual and family supports such as adaptive technology, behavioral supports, environmental and vehicle modifications, respite, etc. via a self-directed model based upon assessed need. Individuals will choose from approved providers using established budgets.

2. Community Care Waiver

DDD provides more intensive in-home individual supports or residential services for people who are enrolled on the Community Care Waiver (CCW). Access to the CCW is available only to Medicaid-eligible individuals who reach the top of the Waiting List for Waiver Services, or are deemed an "emergency," as determined by the criteria outlined in regulation.

Types of Services Provided:

- o **In-Home Supports** – Services and supports are available to enable an individual to continue to live in his or her family or own home for as long as practicable. Individual and family supports, adaptive technology and environmental and vehicle modifications are available to adults enrolled on the CCW.
- o **Employment/Day Supports** - Full, integrated, competitive employment is the preferred option for ALL individuals with disabilities. DDD provides employment supports and other day supports to supplement employment to individuals enrolled on the CCW.
- o **Residential** – Prior to receiving DDD-funded residential services, adults are encouraged to pursue affordable subsidized housing - if needed - through their local housing authorities. Subsidized housing can be used in combination with individual supports to move outside of the family home. When this is not a viable option, an individual can access a DDD-funded residential placement in a group home or supervised apartment.



3. Aging Adults

- As an individual ages (60+), DDD will coordinate with the Division of Aging Services and the Area Agencies on Aging (AAA). The AAAs are county-based and provide home and community-based services for seniors and their caregivers (who also may be seniors), regardless of Medicaid eligibility.
- Older individuals with developmental disabilities who require "specialized services" should continue to access in-home, residential and day services as they age through the CCW. They also may receive services through the AAAs.
- Individuals with developmental disabilities residing in nursing homes will access their services via Managed Long-Term Supports & Services (MLTSS) and no longer will be eligible for the CCW. If home and community-based services are appropriate for these individuals, MLTSS will ensure coordinated services and least restrictive living arrangements.