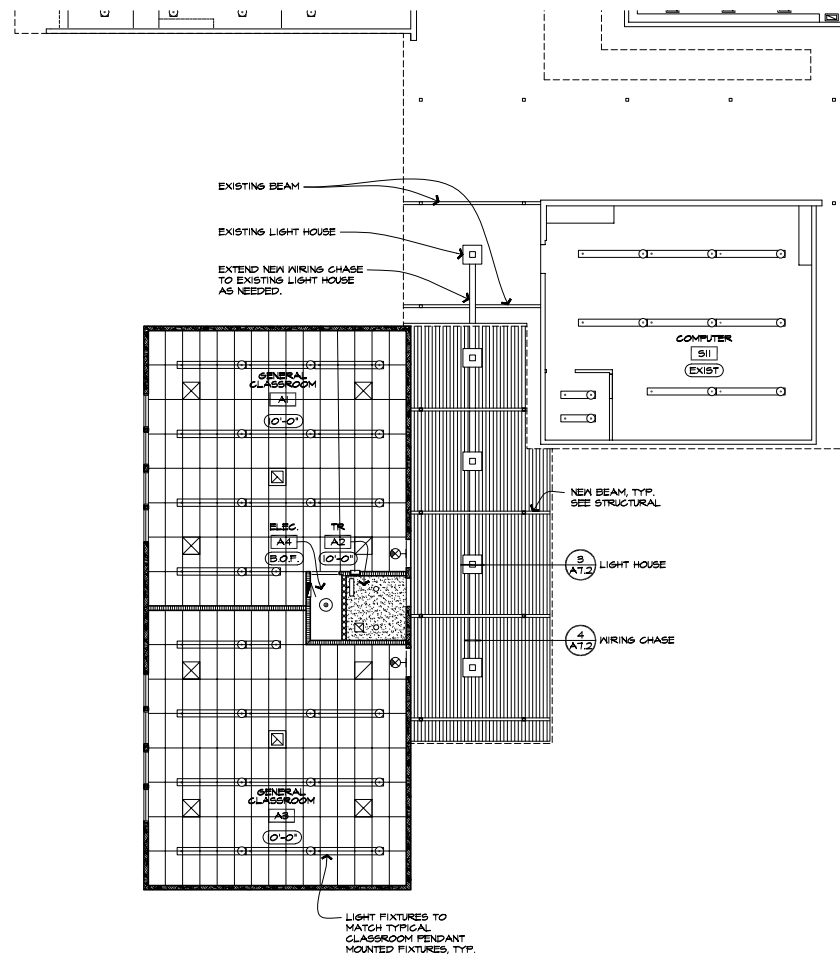


Crow-Applegate-Lorane RFQ

Appendix B



2 REFLECTED CEILING PLAN
SCALE: 1/8"=1'-0"

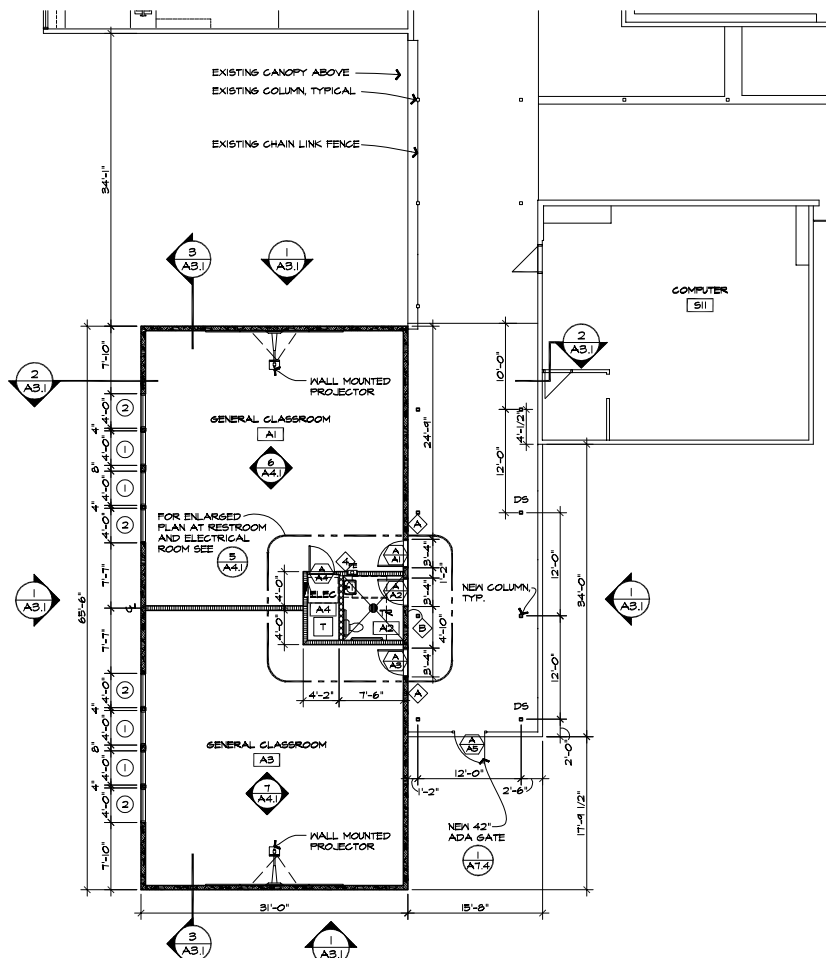


REFLECTED CEILING PLAN LEGEND

- (10'-0") FINISHED CEILING HEIGHT (TYPICAL CLASSROOM CEILING HEIGHT 10'-0" UNO)
- [Pattern] GYPSUM BOARD CEILING OVER TRUSSES, JOISTS OR 2X FRAMING. WHERE BOF IS NOTED, CEILING IS ON BOTTOM OF FRAMING ABOVE.
- [Pattern] 2x6 T&G WOOD DECKING, PAINTED
- [Pattern] OPEN TO STRUCTURE ABOVE
- [Pattern] 2x4 SUSPENDED ACOUSTIC PANEL CEILING
- [Symbol] PENDANT LIGHT FIXTURE - SEE ELECTRICAL
- [Symbol] PENDANT LIGHT FIXTURE - SEE ELECTRICAL
- [Symbol] ARCADE LIGHT FIXTURE - SEE ELECTRICAL
- [Symbol] RECESSED CAN LIGHT FIXTURE - SEE ELECTRICAL
- [Symbol] MALL MOUNTED LIGHT FIXTURE - SEE ELECTRICAL
- [Symbol] EXIT SIGN - SEE ELECTRICAL
- [Symbol] EMERGENCY LIGHT FIXTURE - SEE ELECTRICAL
- [Symbol] AIR DIFFUSER GRILL-SEE MECHANICAL

REFLECTED CEILING PLAN NOTES

1. DIMENSIONS ARE TO FACE OF STUD, OR FACE OF CONCRETE UNO. WHERE DIMENSIONS ARE NOTED AS 'CLEAR' OR 'CLR' THE DIMENSION SHALL BE A CLEAR DISTANCE TO FACE OF FINISH.
2. DETAILS SHOWN ARE TYPICAL. WHERE NO DETAIL IS SHOWN, CONSTRUCTION SHALL BE CONSISTENT WITH DETAILS OF A SIMILAR NATURE SHOWN ELSEWHERE.
3. REFERENCE INTERIOR ELEVATIONS FOR ADDITIONAL INFORMATION NOT SHOWN ON PLAN DRAWINGS.
4. COORDINATE ARCHITECTURAL PLAN WITH MECHANICAL AND ELECTRICAL WORK AND NOTIFY ARCHITECT OF CONFLICTS PRIOR TO PROCEEDING WITH WORK.



1 FLOOR PLAN
SCALE: 1/8"=1'-0"

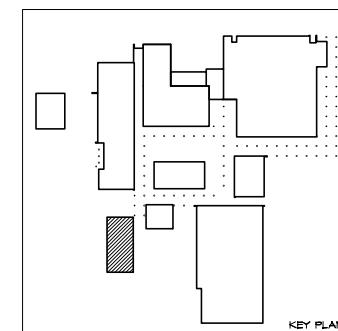


PLAN LEGEND

- [Pattern] WOOD FRAME WALL FOR TYPICAL EXTERIOR ASSEMBLY SEE [12] (AT1), [8] (AT1), [9] (AT1)
- [Pattern] WOOD FRAME SOUND WALL FOR INTERIOR ASSEMBLY SEE [12] (AT5)
- [Pattern] WOOD FRAME WALL FOR INTERIOR ASSEMBLY SEE [19] (AT5)
- [Pattern] RECESSED MALL CABINET AT FIRE EXTINGUISHER, SEE DETAIL [6] (AT5)
- [Symbol] NEW DOOR AND FRAME, WITH DOOR NUMBER - SEE DOOR SCHEDULE [13]
- [Symbol] SIGN DESIGNATION, SEE SIGN TYPES, SEE [2] (AT4)
- [Symbol] WINDOW DESIGNATION - SEE SHEET FOR WINDOW TYPE DESCRIPTIONS. SEE EXTERIOR ELEVATIONS FOR WINDOW TAGS, SEE SHEET [1] (AT1), [8] (AT1)
- [Symbol] FD FLOOR DRAIN - SEE PLUMBING DRAWINGS

GENERAL PLAN NOTES

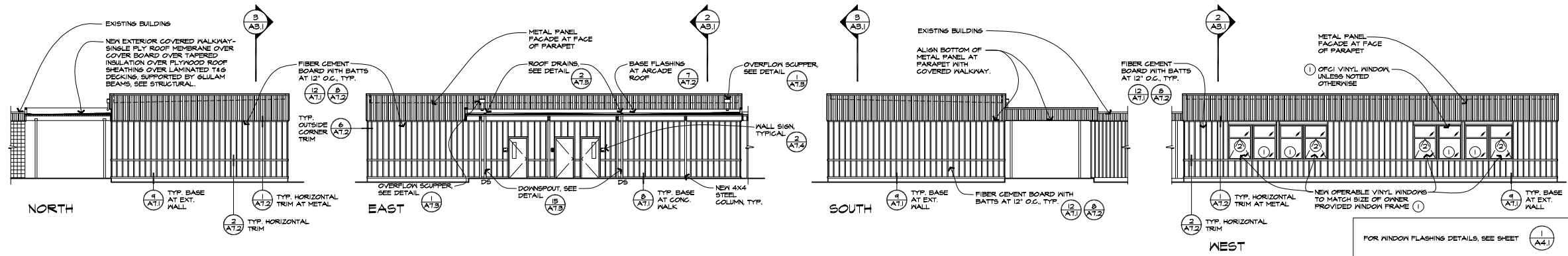
1. DIMENSIONS ARE TO FACE OF STUD UNLESS NOTED OTHERWISE.
2. WHERE DIMENSIONS ARE NOTED AS 'CLEAR' OR 'CLR' THE DIMENSION SHALL BE A CLEAR DISTANCE TO FACE OF FINISH.
3. COORDINATE ARCHITECTURAL PLAN WITH MECHANICAL, ELECTRICAL, AND STRUCTURAL PLANS. NOTIFY ARCHITECT OF CONFLICTS PRIOR TO PROCEEDING WITH WORK.
4. DETAILS SHOWN ARE TYPICAL. WHERE NO DETAIL IS SHOWN, CONSTRUCTION SHALL BE CONSISTENT WITH DETAILS OF A SIMILAR NATURE SHOWN ELSEWHERE.
5. FOR WINDOW SIZES AND TYPES, SEE SHEET A4.1 FOR SCHEDULES.
6. WOOD WALLS ARE TO BE 2x6 FRAMING TYPICAL EXCEPT WHERE NOTED OTHERWISE.
7. SLOPE FLOORS TO DRAIN AT 1/8" PER FOOT MINIMUM, 1/4" PER FOOT MAXIMUM TO WHERE FLOOR DRAINS ARE SHOWN, TYPICAL.



REVISION	

FLOOR PLAN AND REFLECTED CEILING PLAN

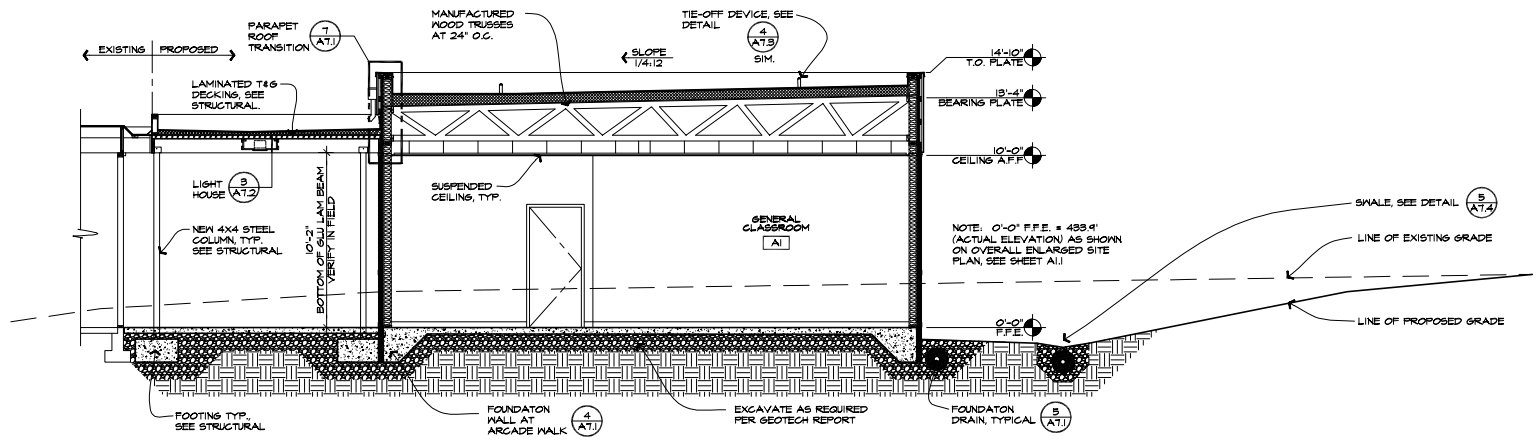
PROJECT #	DATE
20012	2/14/2020



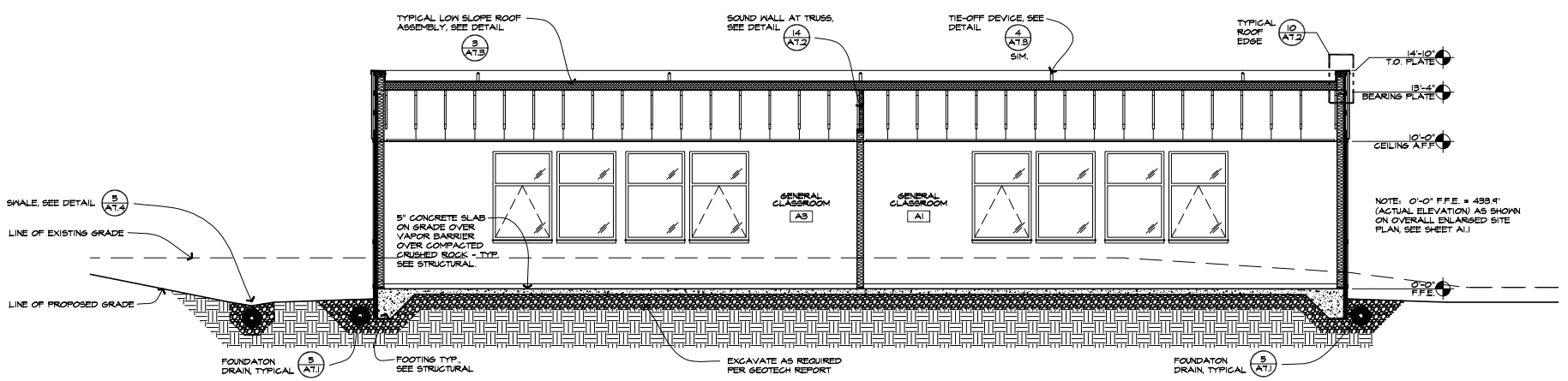
1 CLASSROOM WING - EXTERIOR ELEVATIONS
SCALE: 1/8"=1'-0"

FOR WINDOW FLASHING DETAILS, SEE SHEET 1 A4.1
FOR DOOR DETAILS, SEE DOOR SCHEDULE

ALL TAGS TYPICAL AS SHOWN



2 CLASSROOM WING - CROSS SECTION
SCALE: 1/4"=1'-0"



3 CLASSROOM WING - SECTION
SCALE: 1/4"=1'-0"

△	REVISED

PROJECT #	DATE
20012	2/14/2020