

# TONA2020:

## Elementary School Improvement and Consolidation Project



 GORDON W. JONES ASSOCIATES  
ARCHITECTS, P.C.



# Introductions

- District Team:
  - Dr. Timothy A. Oldenburg, Superintendent of Schools
  - Mrs. Mary Beth Scullion, Asst. Superintendent of C & I
  - Ms. Amy Edgerton, Director of Pupil Personnel Services
  - Mr. Jeffery Hatten, Director of Facilities & Operations
  - Mrs. Donna Hill, Director of Business & Finance



GORDON W. JONES ASSOCIATES  
ARCHITECTS, P.C.



# Introductions

- Design, Construction, Planning/Finance Team:
  - Scott Jones, Mike Noga & Steve DiMatteo, Gordon W. Jones Associates
  - John Ticco, Campus Construction Management
  - Rick Ganci, Capital Markets Advisors
  - Jeff Stone, Hodgson Russ LLP - Bond Counsel



GORDON W. JONES ASSOCIATES  
ARCHITECTS, P.C.



# Introductions

- TONA2020 Committee Members:
  - Community Members:
    - Rick Davis, Nancy Grosskopf, Todd Lachat, Brian Mysliwy, Brian Opalinski, Donald Riemer, Dennis Smilinich, Rita Zirnheld
  - Elected School Board Members:
    - Daniel Calabrese, Diane Misner, Kristin Schmutzler
  - District Members:
    - Central Office Staff, Building Principals, Union Leaders/Members



GORDON W. JONES ASSOCIATES  
ARCHITECTS, P.C.





# GOAL:

- This evening is designed to share facts and accurate information regarding the TONA2020: Elementary School Improvement & Consolidation Project
- This project is designed to address the instructional program, support services, school safety, building infrastructure, and school consolidation for our elementary schools
- Our desire is to inform residents so that they can be prepared to vote on:

**Tuesday, October 22, 2019**

**7am - 8pm**

**Wellness Gymnasium @ Tonawanda High School**



GORDON W. JONES ASSOCIATES  
ARCHITECTS, P.C.



# Committee(s) History:

- TCSD Long-Range Plan, 2005
- Staffing Study for TCSD, 2007
- Facilities Plan, 2008
- A Review of Collaborative Options for Functions & Facilities, 2009
- TCSD Facilities Report, 2010
- TCSD Long-Range Forum, 2013



GORDON W. JONES ASSOCIATES  
ARCHITECTS, P.C.



# Timeline of Events

- March 2009 - BOE action to close Highland School and reconfigure the elementary schools
- Creation of Task Force - ad hoc reconfiguration committee (3/09)
- April 2009 - BOE action to reconfigure elementary schools based on Task Force recommendations
- Fall 2009 - District announces Task Force Committees (Facilities, Clint Small Stadium, Financial)
- January 2010 - Task Forces submits recommendations to BOE (actions taken)
- January 2014 - Facilities Task Force becomes TONA2020



GORDON W. JONES ASSOCIATES  
ARCHITECTS, P.C.



# Instructional Program Rationale – Task Force/TONA2020

- Recommendations:
  - Clear and shared educational focus for an elementary program
  - Shared belief, values, and philosophy for all students in all grades
  - Provides the best opportunity for collaboration and communication between teachers, related service providers, administrators, families, and students
  - Meets the increasing and diverse needs of ALL of our students
  - Reduces the amount of student and families transitions between buildings
  - Provides the best opportunity for a united Tonawanda community focused around parental participation



GORDON W. JONES ASSOCIATES  
ARCHITECTS, P.C.





# Planned Enhanced School Safety

- Enhanced with the newest security camera systems, secured entryways and new security hardware
- Security monitor station to operate doors, cameras, and protocols
- One button lockdown system for the entire building
- Access card entry for staff at all doors
- The single building at Fletcher can increase safety, supervision, security, Police observation and response, Fire/EMS response



GORDON W. JONES ASSOCIATES  
ARCHITECTS, P.C.





# Planned Enhanced School Learning & Technology

- Entire building with Wi-Fi equipment and wiring
- New server room with latest equipment
- New or existing interactive classroom boards
- STEAM labs - 3-D printing, robotics, coding, virtual reality learning
- Rooms for music, choral, and band
- Auditorium to include Wi-Fi, new sound system, new AV system
- Fitness Center for K-5 students and OT/PT room



GORDON W. JONES ASSOCIATES  
ARCHITECTS, P.C.



# Planned Enhanced School Learning & Technology

- Proper space for related service providers to meet the social emotional needs of students
- Improved technology for Library Media Center
- Opportunity for expanded UPK and full-day UPK
- Building organized for focus on early literacy
- Opportunities for older children to serve as role models and younger students to anticipate future school and curriculum activities
- Other new/latest technology available in 2023



GORDON W. JONES ASSOCIATES  
ARCHITECTS, P.C.



# How Did We Get Here

- Review previous studies - recommendations
- Review completion of previous phases/projects
  - Central School, Central Office, Highland School, New Stadium, Clint Small Stadium, Updated Secondary Campus
- 2016 design was too costly for taxpayers; refined scope
  - Previous teams went through another complete design development and cost estimate for the Fletcher campus (with another architectural firm). It was evaluated by Campus Construction Management's office and, unfortunately, was deemed too expensive to pursue as a solution for our community. We then developed the current plans at a much reduced cost with more state building aid to provide the best community solution for our District's long range needs.



GORDON W. JONES ASSOCIATES  
ARCHITECTS, P.C.



# Our Story

- Planned School Consolidation & Updated Instructional Programming
- Measured Not Rushed
- Responsible To Our Community
- Meet the Needs of All Students
- Needs Assessment - Instructional Program Enhancements, Support Services, School Safety, Building Infrastructure (BCS and Inspections), School Consolidation
- Efficiencies: Financial, Operations, Instructional Programming, Safety, and NYSED Support in a Permanent Tax Cap Era



GORDON W. JONES ASSOCIATES  
ARCHITECTS, P.C.





# Facilities Needs Assessment Report

- Many factors were part of the TONA2020 plan:
  - Numerous studies and evaluations over 14 years
  - Programming needs at the elementary level - student achievement
  - Safety planning, logistics, and contingencies in the 21<sup>st</sup> century
  - District efficiencies from consolidation
    - Financial
    - Staffing
    - Special Needs/Services
    - Tax Cap Restrictions
  - Building infrastructure and operational needs
    - Building Condition Survey (2015) and subsequent inspections and assessments
  - Construction cost contingencies and escalators to project work in 2021
  - NYS Department of Education granting of building aid and additional aid based on this comparison study



GORDON W. JONES ASSOCIATES  
ARCHITECTS, P.C.





# Evaluation of our Facilities

- Formal Assessments
  - Committee Studies (2005, 2007, 2008, 2009, 2010, 2013)
  - BCS (2015) - Elementary Schools \$17M (new BCS to be initiated 2020)
  - Facilities Needs Assessment Report (2018) - Additions and Alterations to Address Instructional Program Needs

- Cost to address improvements needed at all three elementary schools:

Fletcher	\$26,175,265
Mullen	\$21,650,500
<u>Riverview</u>	<u>\$22,850,750</u>
<b>Total</b>	<b>\$70,676,515</b>



GORDON W. JONES ASSOCIATES  
ARCHITECTS, P.C.



# Fletcher Elementary School

*Reconstruction cost: \$26,175,265*

*(calculated from the 2015 Building Condition Survey and the District's 2018 Facility Assessment Report)*

*Two story building was originally constructed in 1920, with additions in 1950, 1960 and 2001 for a total of 46,700 sf of building space currently used by 270 students.*

- [Replace Boilers](#), Hot Water System, [Piping](#)
- [Replace Old Electrical Panels](#)
- [Replace Built Up Roofing System](#)
- [Exterior Windows and Exterior Doors](#)
- [Bus Loop](#) & [Parking Lot Asphalt Paving](#) and Concrete walks / ADA ramp improvements
- [Auditorium](#) Renovations
- [HVAC](#) Ventilation Improvements
- Masonry Restoration
- Electrical Upgrades (P/A & Clock Systems, Security Cameras, [Emergency Generator](#))
- Roof Top Units
- Doors Throughout the Building
- Ceilings





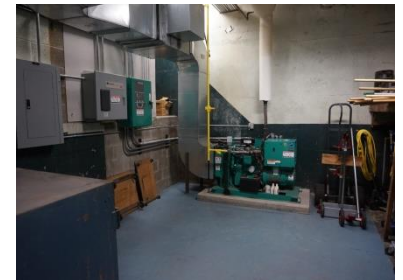
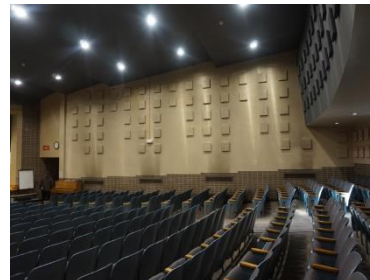
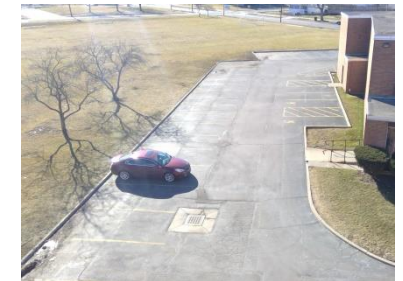
# Fletcher Elementary School

*Reconstruction cost: \$26,175,265*

*(calculated from the 2015 Building Condition Survey and the District's 2018 Facility Assessment Report)*

*Two story building was originally constructed in 1920, with additions in 1950, 1960 and 2001 for a total of 46,700 sf of building space currently used by 270 students.*

- Replace Boilers, Hot Water System, Piping
- Replace Old Electrical Panels
- Replace Built Up Roofing System
- Exterior Windows and Exterior Doors
- Bus Loop & Parking Lot Asphalt Paving and Concrete walks / ADA ramp improvements
- Auditorium Renovations
- HVAC Ventilation Improvements
- Masonry Restoration
- Electrical Upgrades (P/A & Clock Systems, Security Cameras, Emergency Generator)
- Roof Top Units
- Doors Throughout the Building
- Ceilings



# Mullen Elementary School

**Reconstruction cost: \$21,650,500**

*(calculated from the 2015 Building Condition Survey and the District's 2018 Facility Assessment Report)*

*One story building was originally constructed in 1956, with additions in 1958 and 2001 for a total of 48,715 sf of building space currently used by 225 students.*

- Replace [Boilers](#), [Hot Water System](#), Piping
- [Water in Transformer Room](#) – Storm Water Drainage improvements required
- [Auditorium](#) Renovations
- Exterior [Windows](#) and Exterior Doors
- [Bus Loop](#) & Parking Lot Asphalt Paving and Concrete walks / [ADA ramp](#) improvements
- [Masonry Restoration](#)
- HVAC Ventilation Improvements
- Electrical Upgrades (P/A & Clock Systems, Security Cameras, Emergency Generator)
- Roof Top Units
- Doors Throughout the Building
- Ceilings





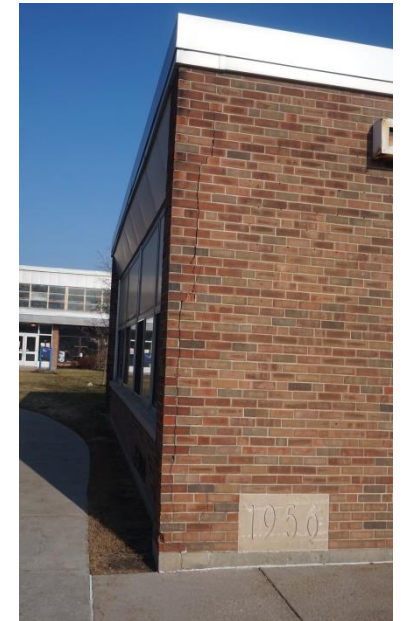
# Mullen Elementary School

*Reconstruction cost: \$21,650,500*

*(calculated from the 2015 Building Condition Survey and the District's 2018 Facility Assessment Report)*

*One story building was originally constructed in 1956, with additions in 1958 and 2001 for a total of 48,715 sf of building space currently used by 225 students.*

- Replace Boilers, Hot Water System, Piping
- Water in Transformer Room – Storm Water Drainage improvements required
- Auditorium Renovations
- Exterior Windows and Exterior Doors
- Bus Loop & Parking Lot Asphalt Paving and Concrete walks / ADA ramp improvements
- Masonry Restoration
- HVAC Ventilation Improvements
- Electrical Upgrades (P/A & Clock Systems, Security Cameras, Emergency Generator)
- Roof Top Units
- Doors Throughout the Building
- Ceilings





# Riverview Elementary School

*Reconstruction cost: \$22,850,750*

*(calculated from the 2015 Building Condition Survey and the District's 2018 Facility Assessment Report)*

*One story building was originally constructed in 1956, with an addition in 1958 for a total of 45,820 sf of building space currently used by 310 students.*

- Replace [Boilers](#), Hot Water System, [Piping](#)
- Replace Old [Electrical Panels](#)
- Replace [Built Up Roofing](#) System
- [Exterior Windows and Exterior Doors](#)
- [Auditorium](#) Renovations
- [HVAC](#) Ventilation Improvements
- Bus Loop & [Parking Lot Asphalt Paving](#) and [Concrete walks](#) / ADA ramp improvements
- Masonry Restoration
- Electrical Upgrades (P/A & Clock Systems, Security Cameras, [Emergency Generator](#))
- Roof Top Units
- Doors Throughout the Building
- Ceilings





# Riverview Elementary School

*Reconstruction cost: \$22,850,750*

*(calculated from the 2015 Building Condition Survey and the District's 2018 Facility Assessment Report)*

*One story building was originally constructed in 1956, with an addition in 1958 for a total of 45,820 sf of building space currently used by 310 students.*

- Replace Boilers, Hot Water System, Piping
- Replace Old Electrical Panels
- Replace Built Up Roofing System
- Exterior Windows and Exterior Doors
- Auditorium Renovations
- HVAC Ventilation Improvements
- Bus Loop & Parking Lot Asphalt Paving and Concrete walks / ADA ramp improvements
- Masonry Restoration
- Electrical Upgrades (P/A & Clock Systems, Security Cameras, Emergency Generator)
- Roof Top Units
- Doors Throughout the Building
- Ceilings



# State Building Aid

- Delayed Reply
- Unexpected Response (Negative)
- Advocacy For Our Community Taxpayers & District
- Unexpected Response (Positive)
- NYS Education Department Endorsement of Project Concept
- New Timeline / New Estimates; TONA2020 = 2023



GORDON W. JONES ASSOCIATES  
ARCHITECTS, P.C.



# State Building Aid

- Our team worked diligently to be granted enhanced building aid and funding
- The State Education Department is giving a **ONE-TIME ONLY** increase in building cost allowance for TCSD in the amount of **\$12.9M**. This allocation was granted because SED calculated that the overall cost to the state and community would be much less if the district were to approve this project now instead of doing expansion and “fix-it” projects over the next 15 years at the existing elementary schools.
- We successfully advocated for our district and the taxpayers of our community.



GORDON W. JONES ASSOCIATES  
ARCHITECTS, P.C.





# Design

- Review of our project scope at the Fletcher School site
- Temporary classrooms



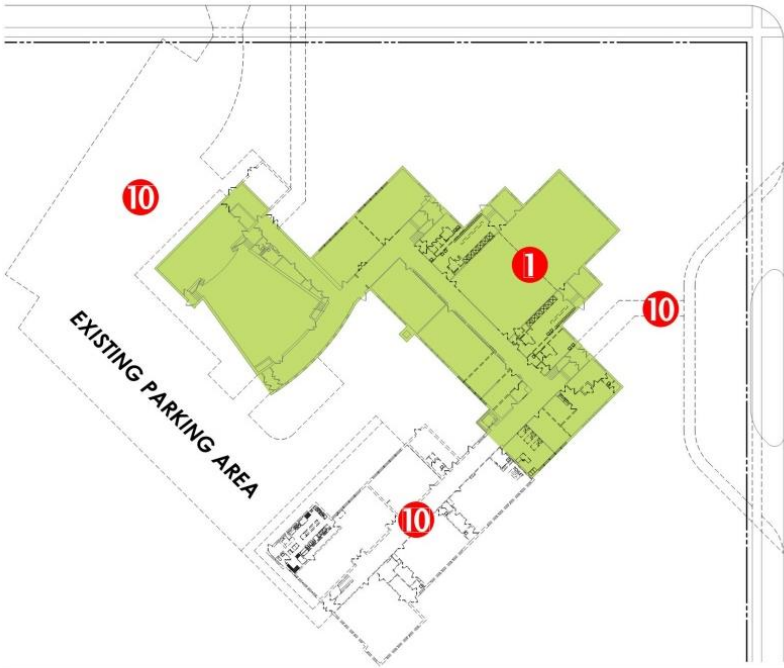
GORDON W. JONES ASSOCIATES  
ARCHITECTS, P.C.





**EXISTING FLETCHER ELEMENTARY SITE PLAN**

FLETCHER STREET



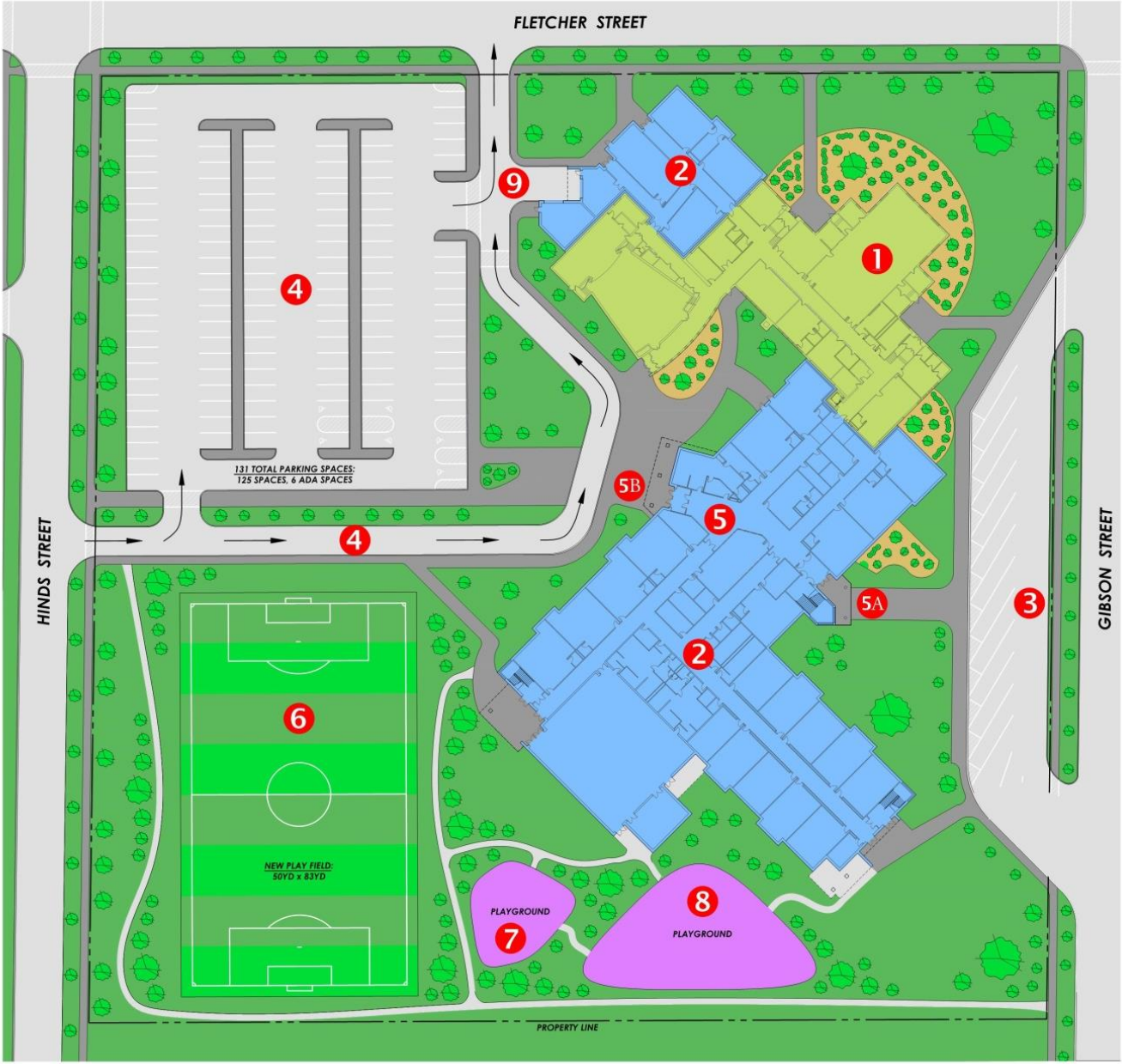
GIBSON STREET

**FLETCHER ELEMENTARY WORK ITEMS**

- 1** PROPOSED RENOVATIONS: ART & MUSIC, CAFETERIA, KITCHEN, CLASSROOMS, TECHNOLOGY INFRASTRUCTURE, ROOF REPLACEMENT, AUDITORIUM.
- 2** PROPOSED ADDITIONS: COVERED ENTRY, ART & MUSIC, CLASSROOMS, SUPPORT/STORAGE, GYM & LOCKER ROOMS, MAIN OFFICE / HEALTH OFFICE, FITNESS & OT/PT, MEDIA CENTER, STEAM CLASSROOMS, RESTROOMS.
- 3** NEW BUS DROP OFF LOOP.
- 4** NEW STAFF PARKING, VISITOR PARKING, AND PARENT DROP OFF LOOP.
- 5** DUAL MAIN ENTRY TO MAIN OFFICE AREA:
  - 5A** SECURE STUDENT ENTRANCE (WALKERS/BUSERS)
  - 5B** SECURE STUDENT/VISITORS ENTRANCE (DROP OFF/WALKERS)
- 6** NEW PLAY FIELD AREA.
- 7** NEW PRIMARY AGE PLAYGROUND (ADA ACCESSIBLE).
- 8** NEW INTERMEDIATE AGE PLAYGROUND (ADA ACCESSIBLE).
- 9** RECEIVING AND DELIVERIES.
- 10** AREAS OF EXISTING BUILDING TO BE DEMOLISED

**NEW FLETCHER ELEMENTARY SITE PLAN**

FLETCHER STREET



HINDS STREET

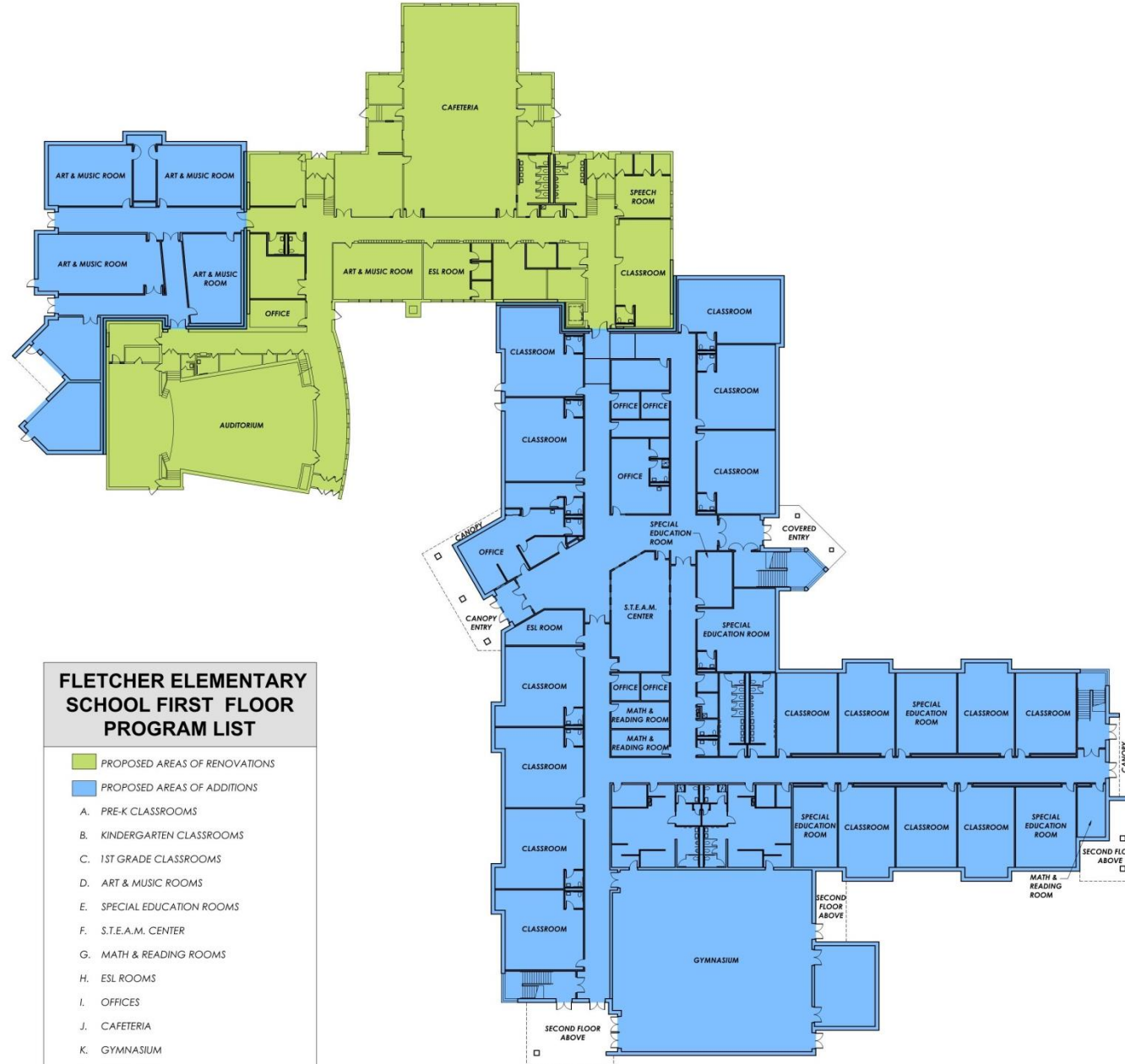
GIBSON STREET



GORDON W. JONES ASSOCIATES  
ARCHITECTS, P.C.



# PROPOSED FLETCHER ELEMENTARY SCHOOL FIRST FLOOR PLAN



GORDON W. JONES ASSOCIATES  
ARCHITECTS, P.C.





# PROPOSED FLETCHER ELEMENTARY SCHOOL SECOND FLOOR PLAN

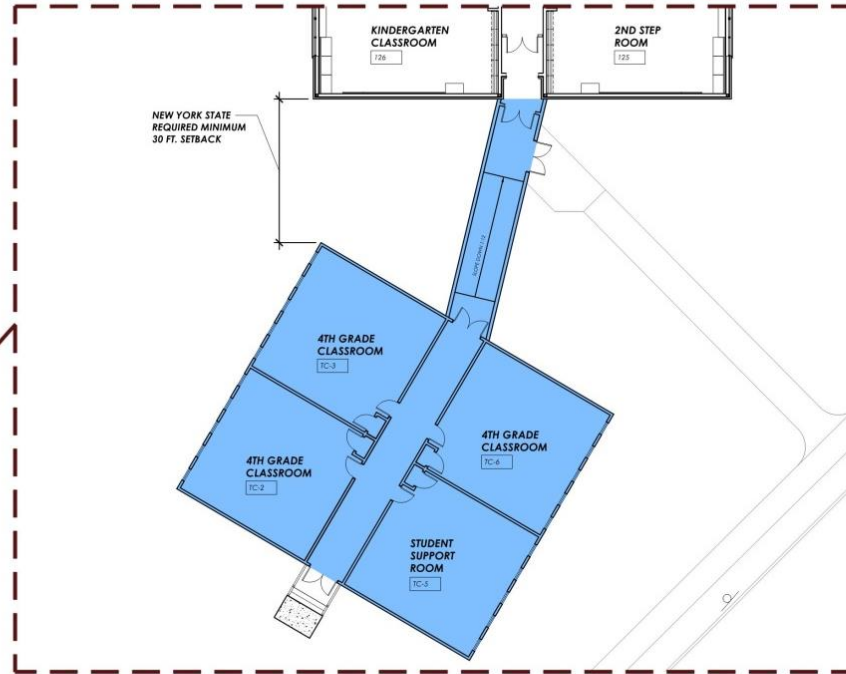


GORDON W. JONES ASSOCIATES  
ARCHITECTS, P.C.

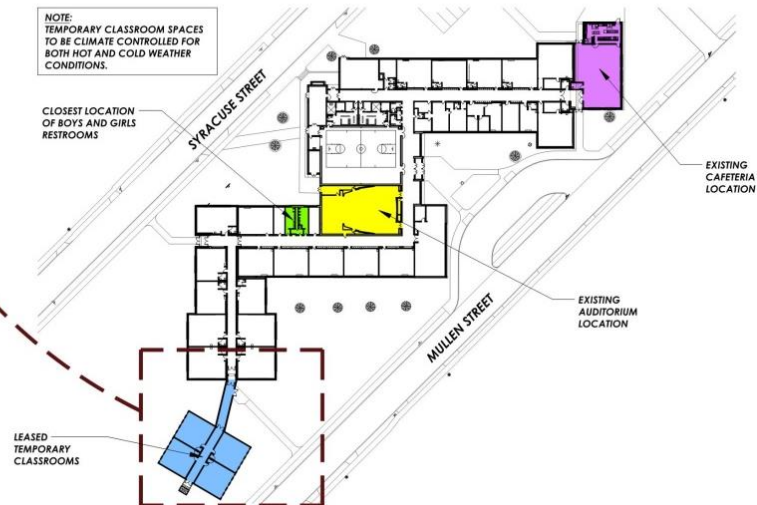




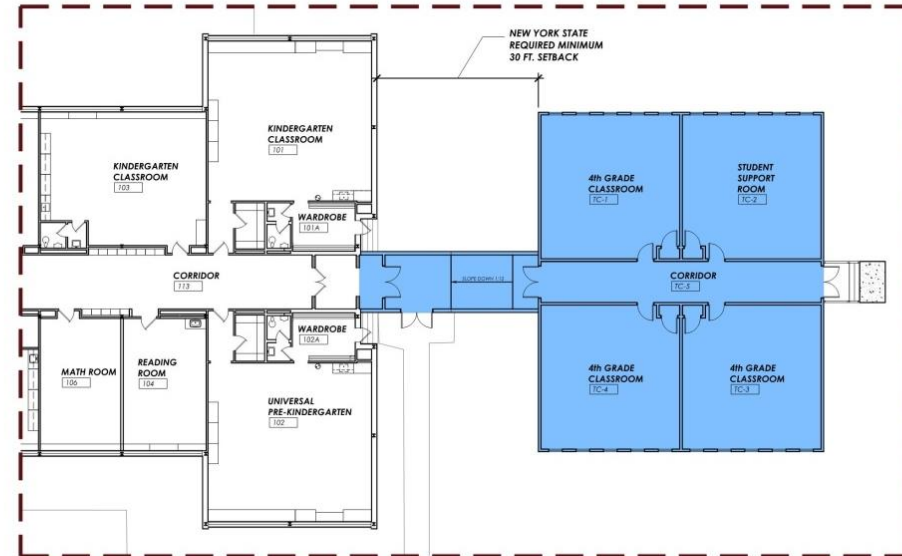
## MULLEN ELEMENTARY TEMPORARY CLASSROOMS



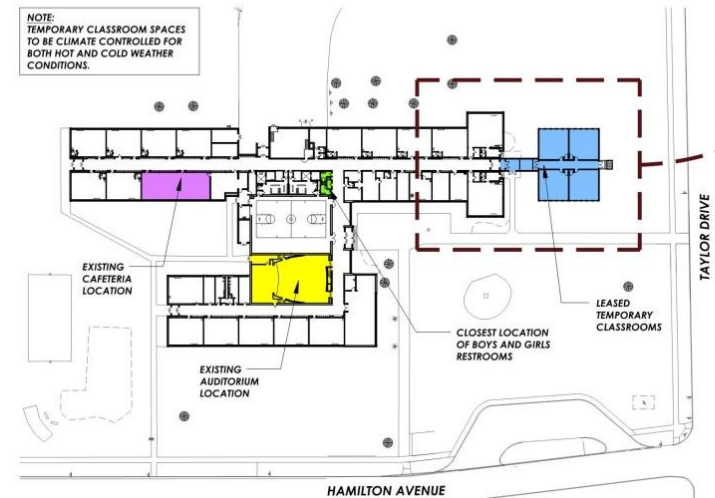
## MULLEN ELEMENTARY OVERALL SCHOOL PLAN



## RIVERVIEW ELEMENTARY TEMPORARY CLASSROOMS



## RIVERVIEW ELEMENTARY OVERALL SCHOOL PLAN



GORDON W. JONES ASSOCIATES  
ARCHITECTS, P.C.



# Financial Considerations

Cost to address improvements needed at <u>all three</u> elementary schools:	Fletcher    \$26,175,265 Mullen       \$21,650,500 <u>Riverview   \$22,850,750</u> <b>Total       \$70,676,515</b>
Cost to consolidate into a single, improved Fletcher Elementary:	<b>\$53,469,266</b>
Cost savings:	<b>\$17,207,249</b>



GORDON W. JONES ASSOCIATES  
ARCHITECTS, P.C.



# Our Current Timeline

## ACTIVITY

- Pre-Referendum Phase
  - Refine scope / budget
  - Community meetings
  - Committee meetings
  - BOE updates
  - SED aidability review
  - Financial study/grants
  - Environmental review– i.e. SEQR, SHPO, traffic study
  - BOE actions
- Public Referendum \$53,469,266 (Vote) – Requires 60% approval Oct. 22, 2019

## TIMELINE

Feb. 2018 – Oct. 2019



GORDON W. JONES ASSOCIATES  
ARCHITECTS, P.C.





# Anticipated Timeline

## ACTIVITY

- Design/Construction Documents
- SED Review and Approval
- Bid & Award Phase
- Construction Phase
  
- **Open for School (All K-5 students)**

## TIMELINE

Nov. 2019 – June 2020

July 2020 – Jan. 2021

Feb. 2021 – March 2021

April 2021 – Summer 2023

**September 2023**



GORDON W. JONES ASSOCIATES  
ARCHITECTS, P.C.



# Why Do This Now?

- Instructional program needs
- Students diverse needs/supports
- School safety
- Efficiencies
- Consistency for students and families (UPK-5 building)
- Tax cap (now permanent)
- Additional \$12.9M one-time building cost allowance/endorsement from SED
- New/improved facilities that will not require significant expansion/repair/replacement



GORDON W. JONES ASSOCIATES  
ARCHITECTS, P.C.



# Preliminary Tax Impact Information

Additional cost per average (\$108,000) home during 20 year bond life

- No Exemption
  - Approx. \$129.91/year
- Basic STAR (\$30,000 exemption)
  - Approx. \$93.83
  - Approx. \$86.61 (w/Veterans Exemption)
- Enhanced STAR (\$68,700 exemption)
  - Approx. \$47.27
  - Approx. \$40.06 (w/Veterans Exemption)

\*\*\*Tax Impact Begins 2023



GORDON W. JONES ASSOCIATES  
ARCHITECTS, P.C.





# Property Tax Relief – Credit Checks



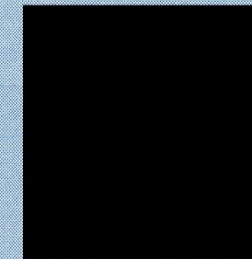
**Department of  
Taxation and Finance**

## 2019 Property Tax Relief

Amount: \$ 283.79

Property Key:

TONAWANDA NY 14150-4019



Dear Taxpayer:

New York State is providing you with this Property Tax Relief credit check to reduce your local property tax burden. You are eligible for this check in part because your property is in a school district that complied with the state's property tax cap. Please retain this stub with your tax documents. For more information, visit [www.tax.ny.gov](http://www.tax.ny.gov).

DTF-179.5 (9/19)

Detach before cashing and retain as evidence of receipt.



GORDON W. JONES ASSOCIATES  
ARCHITECTS, P.C.






# Frequently Asked Questions:



[District Home](#) [Select a School...](#) [Sign In](#)



## Tonawanda City School District

[Parent Portal](#) [Food Services](#) [Staff Resources](#) [Student Registration](#) [Staff Directory](#)

[Home](#) [Our District](#) [Elementary](#) [Secondary](#) [Academics](#) [Athletics](#) [Pupil Services](#) [Our Community](#) [Calendar](#)

### TONA2020

- [Letter from District Officials](#)
- [Capital Project Newsletter](#)
- [Capital Project Fact Sheet](#)
- [Facilities Needs Assessment](#)
- [Enrollment Projections](#)
- [Frequently Asked Questions \(FAQ\)](#)
- [Articles in the Media](#)
- [Task Force Information](#)

[Tonawanda City School District](#) ▶ [Our District](#) ▶ TONA2020

## TONA2020: Elementary School Improvement & Consolidation Project

### Sustaining our future by investing in our learning environment for students, staff & community

Dear Community Members,

On October 22, 2019, residents of the Tonawanda City School District will have an opportunity to vote on an Elementary School Improvement and Consolidation Project that is designed to address the final phase of the TONA2020 initiative. This project addresses critical facilities needs in our three elementary schools, instructional programming space, and current emerging school safety protocols. The project scope is based on a number of factors, including the New York State mandated Building Condition Survey, citing numerous reconstruction and replacement needs at all three elementary school facilities.

The TONA2020 initiative has included purposeful research and study regarding the future of our school district. Previous phases have been supported to provide a beautiful stadium and sports complex shared by our student athletes and community members, performing arts instructional space, and central offices attached to the high school. **This final phase of the initiative focuses on our elementary education facilities.**

Facilities studies have concluded that our three aging elementary schools would only become much more expensive to maintain and remain functional in coming years. Instead of spending taxpayer dollars on three elementary school facilities that all require significant improvements to remain usable, the TONA2020 committee has unanimously recommended an **elementary school consolidation plan**. This plan will address our increasing facility needs and allow our district to improve and advance our educational programs, provide necessary services, and meet the needs of all students in a permanent tax cap era.

The consolidation plan we are proposing to district residents would close the Mullen and Riverview schools and include a significant school upgrade at Fletcher Elementary. This plan ensures that all elementary students would benefit from increased and improved space in a 21st Century educational



### Project Focus

- ✓ Student Achievement and Support
- ✓ Consolidate and Improve Our Aging Facilities for Sustainability



GORDON W. JONES ASSOCIATES  
ARCHITECTS, P.C.



# Future of Riverview and Mullen

- Our track record (good relationships with buyers; good stewards)
- Opportunities (strong economy offers multiple options)
- Unknowns (many possibilities exist)
- The goal of the district is to sell Mullen and Riverview schools - immediately following their closure in the Fall of 2023 - to a purchaser that will add to our community tax base. The district has already received inquiries regarding the opportunity to purchase the schools should this capital project and consolidation plan be approved.



GORDON W. JONES ASSOCIATES  
ARCHITECTS, P.C.





# Closed Local Schools – Recent Outcomes

- Depew - Sold (senior housing)
- Ken-Ton - (multiple buildings) - District storage, lease for private school, lease for private business(es), Sold (senior assisted living)
- Medina - Sold (private school)
- Orchard Park - Sold (developer; leased to Erie 2 BOCES)
- Salamanca - Sold (educational center birth - pre-k)
- Wilson - Lease to sell (private businesses)



GORDON W. JONES ASSOCIATES  
ARCHITECTS, P.C.



# Enrollment Projections - 5Sight Data

- *This information is garnered from the New York State Department of Health with regards to Live Birth Data.*
- *Additional information is based on historical data which is gathered from the BEDS data each district submits to NYSED annually.*
- *This data is fact based and reasonably assumes that the Cohort Survival Rate will move forward and that the trend data will continue in a similar manner over the long period of time this has been tracked.*

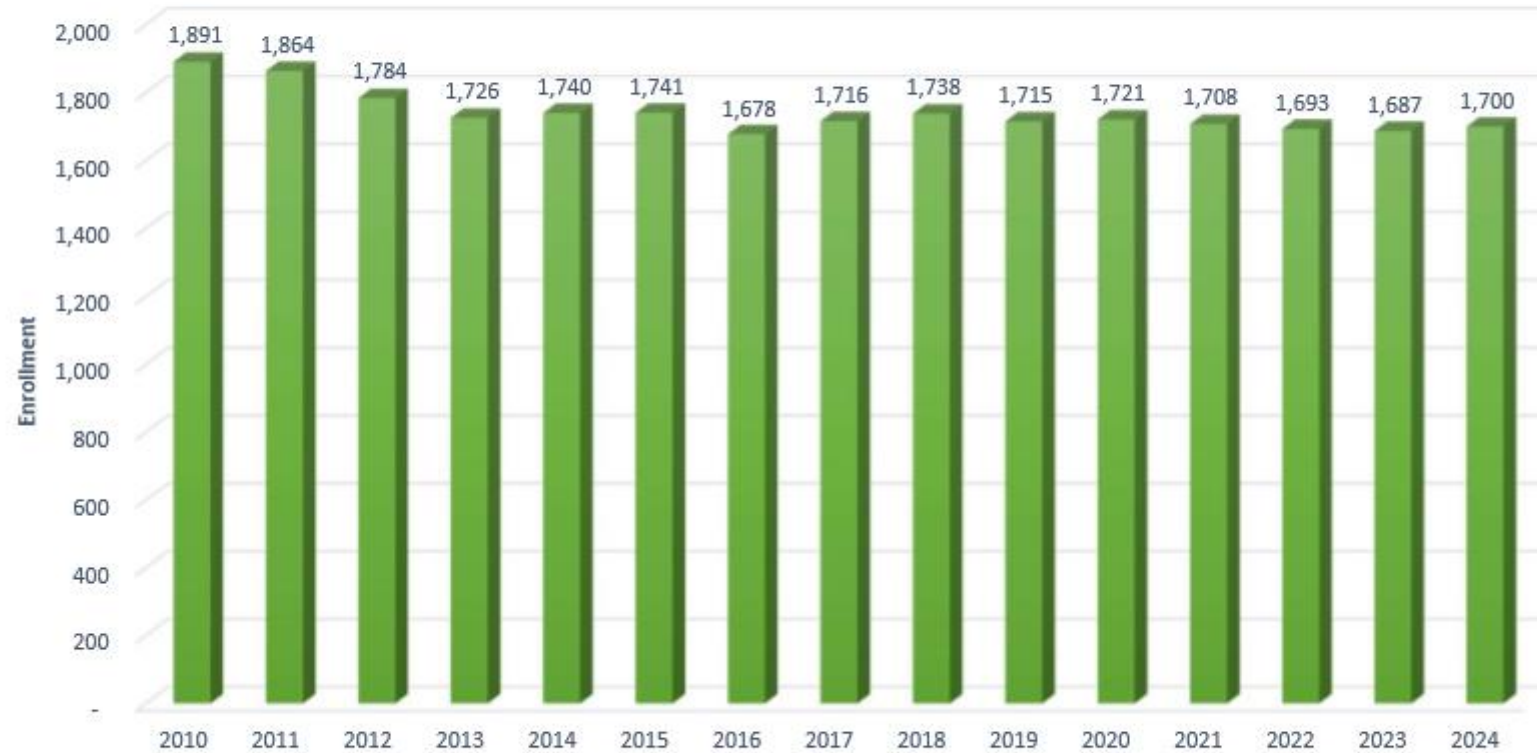
## TONAWANDA CITY SD Enrollment Projection Report

																		Current	Projected (Fiscal Year)				
																							2019 - 2024 TrendLine
																							2019 - 2024 TrendLine
																							2019 - 2024 TrendLine
																							2019 - 2024 TrendLine
																							2019 - 2024 TrendLine
																							2019 - 2024 TrendLine
																							2019 - 2024 TrendLine
																							2019 - 2024 TrendLine
																							2019 - 2024 TrendLine
																							2019 - 2024 TrendLine
																							2019 - 2024 TrendLine
																							2019 - 2024 TrendLine
																							2019 - 2024 TrendLine
																							2019 - 2024 TrendLine
																							2019 - 2024 TrendLine
																							2019 - 2024 TrendLine
																							2019 - 2024 TrendLine
																							2019 - 2024 TrendLine
																							2019 - 2024 TrendLine
																							2019 - 2024 TrendLine
																							2019 - 2024 TrendLine
																							2019 - 2024 TrendLine
																							2019 - 2024 TrendLine
																							2019 - 2024 TrendLine
																							2019 - 2024 TrendLine
																							2019 - 2024 TrendLine
																							2019 - 2024 TrendLine
																							2019 - 2024 TrendLine
																							2019 - 2024 TrendLine
																							2019 - 2024 TrendLine
																							2019 - 2024 TrendLine
																							2019 - 2024 TrendLine
																							2019 - 2024 TrendLine
																							2019 - 2024 TrendLine
																							2019 - 2024 TrendLine
																							2019 - 2024 TrendLine
																							2019 - 2024 TrendLine
																							2019 - 2024 TrendLine
																							2019 - 2024 TrendLine
																							2019 - 2024 TrendLine
																							2019 - 2024 TrendLine
																							2019 - 2024 TrendLine
																							2019 - 2024 TrendLine
																							2019 - 2024 TrendLine
																							2019 - 2024 TrendLine
																							2019 - 2024 TrendLine
																							2019 - 2024 TrendLine
																							2019 - 2024 TrendLine
																							2019 - 2024 TrendLine
																							2019 - 2024 TrendLine
																							2019 - 2024 TrendLine
																							2019 - 2024 TrendLine
																							2019 - 2024 TrendLine
																							2019 - 2024 TrendLine</














### Total Enrollment Trend



## TONAWANDA CITY SD Enrollment Projection Report

Grade	History (Fiscal Year)										Current		Projected (Fiscal Year)				2019 - 2024			
	2007	2008	2009	2010	2011	2012	2013	2014	2015	2016	2017	2018	2019	2020	2021	2022	2023	2024	Trend Line	
Kindergarten	133	134	143	119	117	132	135	130	132	110	138	126	134	141	123	129	131	132		
1	130	142	131	143	125	112	137	134	129	140	115	141	127	135	142	124	130	132		
2	153	137	146	125	135	133	105	144	137	120	148	125	141	127	136	142	124	130		
3	127	145	139	144	126	124	136	102	139	131	121	144	121	136	123	131	138	120		
4	143	130	139	145	146	127	125	136	112	138	133	131	147	123	139	126	134	141		
5	134	142	127	138	145	136	132	131	138	109	134	133	131	147	124	140	126	134		
Total K-5	820	830	825	814	794	764	770	777	787	748	789	800	802	811	787	792	783	789		
																				
Annual Change	1.2% -0.6% -1.3% -2.5% -3.8% 0.8% 0.9% 1.3%										-5.0%	5.5%	1.4%	0.2%	1.2%	-2.9%	0.6%	-1.2%	0.8%	

**FORECAST5**  
ANALYTICS

2135 CityGate Lane, 7th Floor, Naperville, Illinois 60563 | 630.955.7500 | [FORECAST5ANALYTICS.COM](http://FORECAST5ANALYTICS.COM)

All assumptions provided by the District. ©2017 Forecast5 Analytics. All Rights Reserved.

# 2017-2018 School Report Card - NYSED



## TOTAL EXPENDITURES PER PUPIL

THIS SCHOOL DISTRICT	SIMILAR DISTRICT GROUP	NY STATE
\$17,750	\$22,738	\$24,712

Total Expenditures Per Pupil is the simple arithmetic ratio of Total Expenditures to Pupils. Total Expenditures include district expenditures for classroom instruction, as well as expenditures for transportation, debt service, community service and district-wide administration that are not included in the Instructional Expenditure values for General Education and Special Education. As such, the sum of General Education and Special Education Instructional Expenditures does not equal the Total Expenditures.



GORDON W. JONES ASSOCIATES  
ARCHITECTS, P.C.







# Abstract of School Taxes 2018-2019

RECEIVER		CODE	VALUATION	TAX SPREAD	TAX RATE / 1000
<b><u>CITY OF TONAWANDA SCHOOL DISTRICT</u></b>		<u>141600</u>			
		TCSD			
Tonawanda	Joseph M. Hogenkamp		753,472,459	12,161,319.00	<b>16.140363</b>
<b>Total Warrant</b>			<b>\$12,161,319.00</b>		
<b><u>GRAND ISLAND CENTRAL SCHOOL DISTRICT</u></b>		<u>144601</u>			
		GIC1			
Grand Island	Patricia A. Frentzel		1,728,408,178	33,463,152.46	<b>19.360677</b>
<b>Total Warrant</b>			<b>\$33,463,152.46</b>		
<b><u>DEPEW UNION FREE SCHOOL</u></b>		<u>143007</u>			
		DUFC			
Cheektowaga	Vickie L. Dankowski		565,793,099	12,281,071.63	<b>21.705941</b>
Lancaster	Diane M. Terranova		244,377,756	5,605,838.28	<b>22.939233</b>
<b>Total Warrant</b>			<b>\$17,886,909.91</b>		
<b><u>LAKE SHORE CENTRAL EVANS-BRANT SCHOOLS</u></b>		<u>144401</u>			
		LSC1			
Brant	Barbara Daniel		95,369,580	1,929,812.80	<b>20.235098</b>
Eden	Lynn M. Krajacic		2,522,021	67,467.81	<b>26.751486</b>
Evans	Lynn M. Krajacic		855,561,560	15,521,436.98	<b>18.141812</b>
<b>Total Warrant</b>			<b>\$17,518,717.59</b>		

# Abstract for Schools Taxes 2019-2020

- Erie County document has not been released for 2019-2020
- School Tax (per \$1,000 assessed value) for Tonawanda City:
  - 2018-2019 - \$16.140363
  - 2019-2020 - \$15.766429



GORDON W. JONES ASSOCIATES  
ARCHITECTS, P.C.



# City of Tonawanda School Tax Levy

• 2015 - 2016	\$11,675,351
• 2016 - 2017	\$11,449,561
• 2017 - 2018	\$11,815,947
• 2018 - 2019	\$12,161,319
• 2019 - 2020	\$11,922,096



GORDON W. JONES ASSOCIATES  
ARCHITECTS, P.C.





# Attendance Timeline

Current Grade:	2020-2021	2021-2022	2022-2023	2023-2024
----------------	-----------	-----------	-----------	-----------

3rd Grade	4th @ FL	5th Wing @ MS	6th @ MS	7th @ MS
2nd Grade	3rd @ MU/RV	4th @ MU/RV*	5th Wing @ MS	6th @ MS
1st Grade	2nd @ MU/RV	3rd @ MU/RV	4th @ MU/RV*	5th @ NEW FL
Kindergarten	1st @ MU/RV	2nd @ MU/RV	3rd @ MU/RV	4th @ NEW FL
UPK	K @ MU/RV	1st @ MU/RV	2nd @ MU/RV	3rd @ NEW FL

\*In new temporary classroom additions



GORDON W. JONES ASSOCIATES  
ARCHITECTS, P.C.



# Closing Comments

- Warrior Pride
- Our future
- Thank you for your continued support of our students, programs, and school district



GORDON W. JONES ASSOCIATES  
ARCHITECTS, P.C.



# Questions

- We welcome questions from the community that relate specifically to this proposed:

## TONA2020: Elementary School Improvement & Consolidation Project

- Additional questions can be posed after the session to our team or by contacting:

Dr. Timothy A. Oldenburg

[toldenburg@tonacsd.org](mailto:toldenburg@tonacsd.org)

716-694-7784



GORDON W. JONES ASSOCIATES  
ARCHITECTS, P.C.

