

NWEA Fall 2022 Data

November 21, 2022
School Committee Meeting

GET READY FOR

A LOT OF DATA

NWEA Data

Fall 2022/23 School Year

Northwest Evaluation Association (NWEA)

- 21 years of data for Sanford School District using MAP Growth Assessments
 - Shows trends across grades for district wide needs
 - Reduces down to classroom and student trends for individual needs
- The NWEA assesses Common Core Standards.
- Grades 1-10 (3-8 & 10 are mandatory for the state)*
 - Math and Reading**
 - Each assessment 45 - 90 minutes (even longer in upper grades)

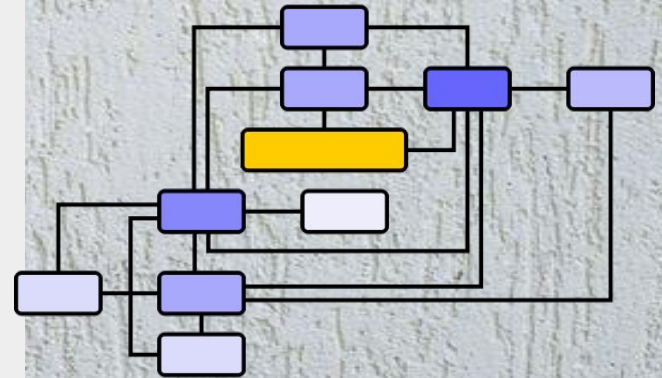
* No K & grade 11

** Removed language assessment



The Measures of Academic Progress (MAP)

- MAP Growth is a computer-Adaptive multiple choice test
- If a student answers a question correctly, the next question is more challenging
- If they answer incorrectly, the next question is easier
- This type of assessment challenges top performers without overwhelming students whose skills are below grade level





How Does MAP Measure?

- Similar to a growth chart, MAP tests measure students growth in Math and Reading each year
- The scale used to measure progress is not feet and inches, but a RIT scale which is created using data from across the country
- Reports provide scores for each skill area to determine strengths, areas to improve and overall score

What Does MAP Measure?

Reading:

- Word origins, semantics, vocabulary acquisition
- Comprehension of Literary texts
- Comprehension of Nonfiction texts

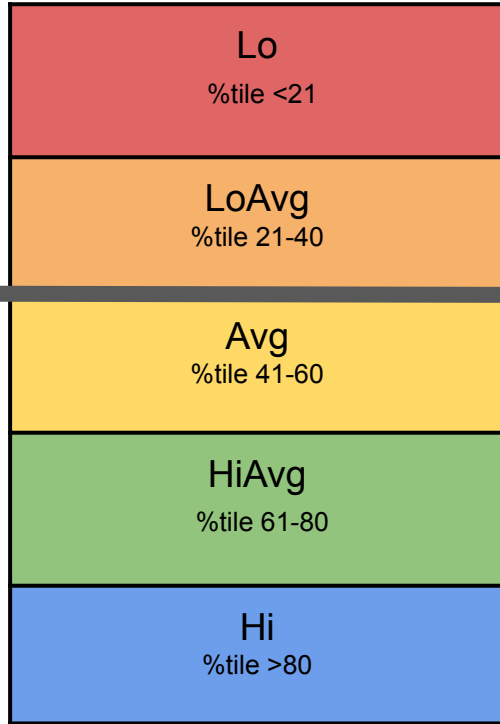
Math:

- Number and number sense
- Computation and estimation
- Measurement and geometry
- Probability and statistics
- Patterns, functions, and algebra

Instructional Level versus Mastery

MAP:

- Provides information about the instructional level of a student
- Provides a road map for students toward achieving mastery
- Is not a test for determining mastery of skills



In the red and orange we want to see numbers **below** the 20th percentile

In the yellow, green and blue we want to see numbers **above** the 20th percentile

Grade 1

Math

Lo %tile <21	13%
LoAvg %tile 21-40	27%
Avg %tile 41-60	25%
HiAvg %tile 61-80	24%
Hi %tile >80	12%

Reading

Lo %tile <21	17%
LoAvg %tile 21-40	24%
Avg %tile 41-60	27%
HiAvg %tile 61-80	19%
Hi %tile >80	12%

Grade 2

Math

Lo %tile <21	13%
LoAvg %tile 21-40	15%
Avg %tile 41-60	29%
HiAvg %tile 61-80	24%
Hi %tile >80	19%

Reading

Lo %tile <21	16%
LoAvg %tile 21-40	25%
Avg %tile 41-60	24%
HiAvg %tile 61-80	18%
Hi %tile >80	16%

Grade 3

Math

Lo %tile <21	28%
LoAvg %tile 21-40	24%
Avg %tile 41-60	24%
HiAvg %tile 61-80	17%
Hi %tile >80	7%

Reading

Lo %tile <21	24%
LoAvg %tile 21-40	19%
Avg %tile 41-60	19%
HiAvg %tile 61-80	19%
Hi %tile >80	19%

Grade 4

Math

Lo %tile <21	18%
LoAvg %tile 21-40	29%
Avg %tile 41-60	27%
HiAvg %tile 61-80	19%
Hi %tile >80	8%

Reading

Lo %tile <21	17%
LoAvg %tile 21-40	25%
Avg %tile 41-60	22%
HiAvg %tile 61-80	25%
Hi %tile >80	11%

Grade 5

Math

Lo %tile <21	25%
LoAvg %tile 21-40	18%
Avg %tile 41-60	19%
HiAvg %tile 61-80	23%
Hi %tile >80	15%

Reading

Lo %tile <21	19%
LoAvg %tile 21-40	20%
Avg %tile 41-60	19%
HiAvg %tile 61-80	31%
Hi %tile >80	12%

Grade 6

Math

Lo %tile <21	25%
LoAvg %tile 21-40	29%
Avg %tile 41-60	26%
HiAvg %tile 61-80	14%
Hi %tile >80	6%

Reading

Lo %tile <21	23%
LoAvg %tile 21-40	20%
Avg %tile 41-60	24%
HiAvg %tile 61-80	24%
Hi %tile >80	10%

Grade 7

Math

Lo %tile <21	24%
LoAvg %tile 21-40	28%
Avg %tile 41-60	24%
HiAvg %tile 61-80	19%
Hi %tile >80	6%

Reading

Lo %tile <21	22%
LoAvg %tile 21-40	23%
Avg %tile 41-60	24%
HiAvg %tile 61-80	21%
Hi %tile >80	10%

Grade 8

Math

Lo %tile <21	18%
LoAvg %tile 21-40	28%
Avg %tile 41-60	20%
HiAvg %tile 61-80	17%
Hi %tile >80	17%

Reading

Lo %tile <21	16%
LoAvg %tile 21-40	24%
Avg %tile 41-60	20%
HiAvg %tile 61-80	21%
Hi %tile >80	19%

Grade 9

Math

Lo %tile <21	28%
LoAvg %tile 21-40	19%
Avg %tile 41-60	22%
HiAvg %tile 61-80	18%
Hi %tile >80	14%

Reading

Lo %tile <21	28%
LoAvg %tile 21-40	12%
Avg %tile 41-60	23%
HiAvg %tile 61-80	21%
Hi %tile >80	15%

Grade 10

Math

Lo %tile <21	21%
LoAvg %tile 21-40	25%
Avg %tile 41-60	22%
HiAvg %tile 61-80	20%
Hi %tile >80	12%

Reading

Lo %tile <21	25%
LoAvg %tile 21-40	22%
Avg %tile 41-60	20%
HiAvg %tile 61-80	18%
Hi %tile >80	15%

*what
are we
doing?*

Literacy Instruction

- **K-4 Literacy Coaches**
- **5-8 Literacy Consultant**
- **Small Group Instruction**
- **9-12 leveled courses**
- **Spartan Time**

Math Instruction:

- **Reveal Math grade K thru Algebra 2**
 - **Works towards mastery of skills not a spiraling curriculum**
 - **K - 5 Built in classroom interventions that teachers use for small group instruction**
 - **6 - Algebra 2 - Aleks intervention and enrichment program**
- **K-4 Math coach**
- **5-8 Math Interventionist**



Winter Screening Window

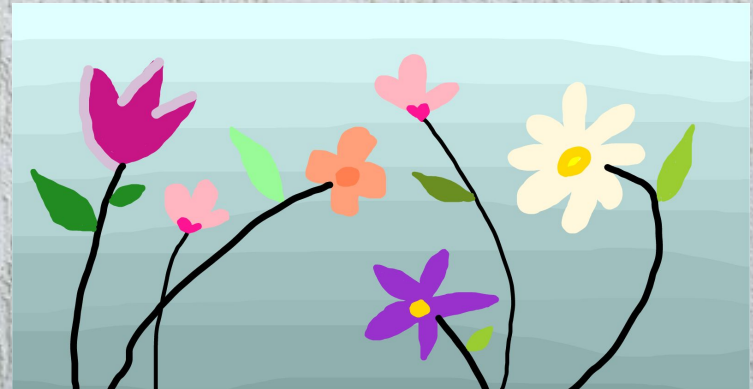
Snap shot to see growth for Grades 1-9

First test for Kindergarten

January 9 - February 3

Spring Testing Window

May 1 - May 26





**Any
Questions?**

