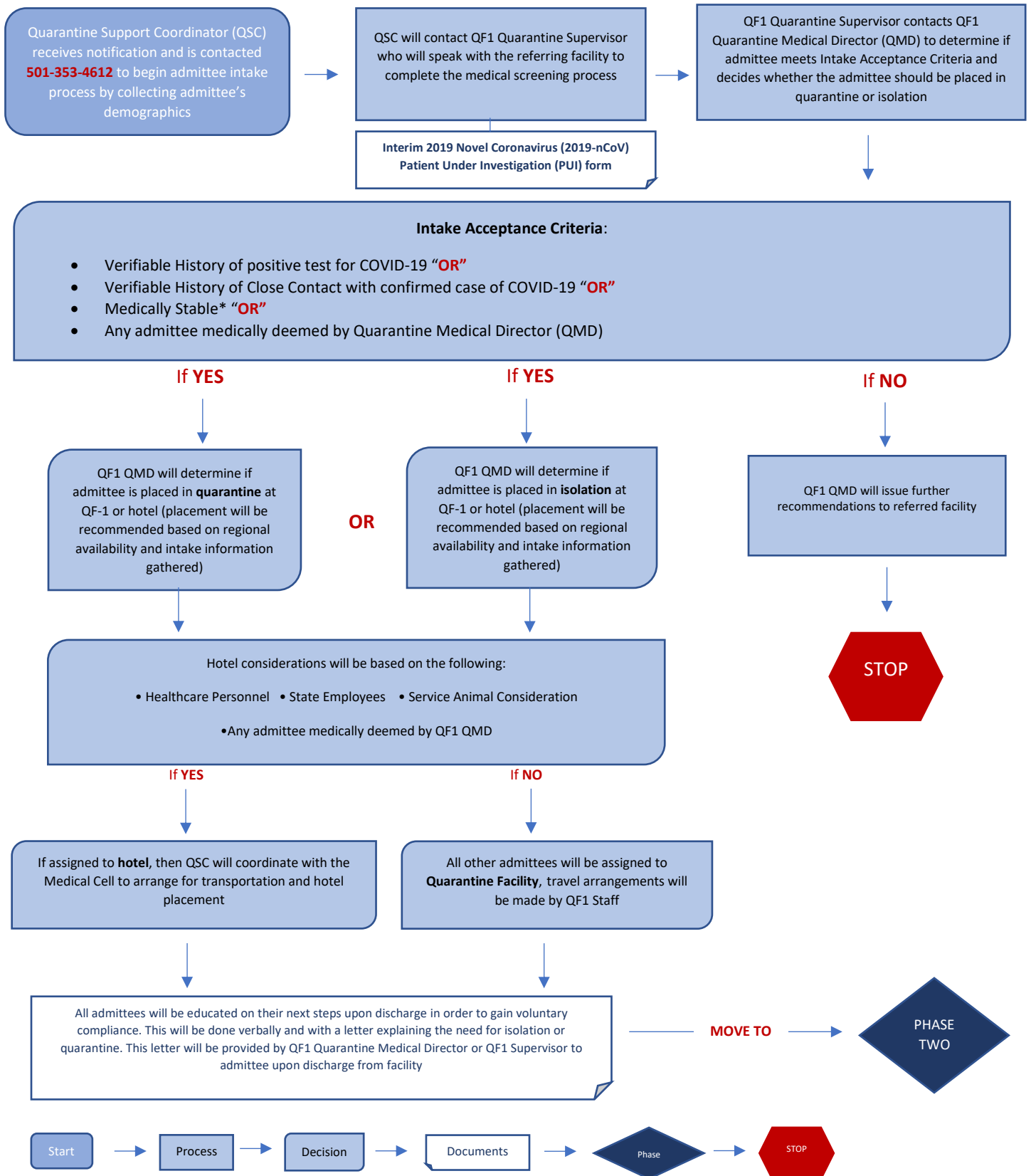




# Quarantine and Isolation Facility Process

## Phase One (For External Use)



\*Definition of **Medically Stable** for Intake Acceptance Criteria

• Temperature < 100.4 F without medication for 24 hours

• No shortness of breath, no oxygen requirements, respiratory distress

• Physically, mentally, functionally independent with Activities of Daily Living

1. Personal hygiene – bathing/showering, grooming, oral care | 2. Dressing - the ability to physically dress/undress oneself | 3. Eating - the ability to feed oneself

4. Maintaining continence - the mental/physical capacity to use a restroom, including the ability to get on and off the toilet and cleaning oneself and the bathroom after use

5. Transferring/Mobility- moving oneself from seated to standing, getting in and out of bed, and the ability to transfer independently from one location to another.