

QUALITY PROFILE

2015—2016



Milton-Union Exempted
Village Schools



"Every Student,
Every Day"



To the Milton-Union Community,

This, the second edition of the Quality Profile, highlights the numerous opportunities in which Milton-Union students participated last school year. The Quality Profile is a companion to the recently released state of Ohio's Local Report Card which contains demographic details and results from state tests. However, school is so much more than reading, writing and arithmetic! It is preparing students for "their" kind of future – working in cooperative teams, communicating clearly and thinking critically to solve problems while using the appropriate resources – all being done under the umbrella of caring, "Every Student, Every Day."



Not only are these qualities utilized in classroom settings but in performances and contests of every kind. Our students not only entertain but they also give back! Perhaps you have witnessed this at one of the number of events – The Great Nighttime Reading Adventure, the Grandparent Breakfast, a Veterans Day program, at the FFA Fair or the high school community service day.



The following information is divided into categories: academics, technology, student services, student leadership, fine arts, athletics, giving back, safety and security, facilities and finances.

I truly hope you find our Quality Profile informative but more importantly realize the hard work of students and staff in their endeavor to do the best! As a new school year unfolds under new leadership, continue to support our schools! Students and staff are counting on it!



A Bulldog Forever,

Genny Rammel



A Note from new superintendent Dr. Brad Ritchey

This publication focuses on giving you a glimpse into the culture and community that makes Milton-Union Schools so successful. Through the collaboration and support of the community and Milton-Union school personnel, students are being given the opportunity to develop the habits and skills necessary to be successful as 21st century learners. I look forward to providing the leadership necessary to continue the great work this district is accomplishing and take pride in aligning my family with a community and district rich in a tradition of excellence.

Brad Ritchey



View more information at www.milton-union.k12.oh.us

Academics

All Day,
Every Day
Kindergarten

*"Families, students and educators
are partners in student success."*

**Milton-Union Elementary
named one of Ohio's Ready Schools!**



Middle School

- 45% in accelerated courses
- 20 Electives Offered
- 2 options for HS math credits
- Homework Club
- Spanish I Credit, Grade 8
- 10 Fine Arts options

ACT[®]

	M-U Avg.	State Avg.
English	21.7	21.2
Math	22.0	21.6
Reading	24.2	22.5
Science	22.9	22.0
Composite	22.8	22.0

Scholarship
\$2,000,000
Money



95.7%
Graduation
Rate
State Average:
81.8%

Technology

District

Fully Wireless campus

26 Technology courses were offered to the K-12 staff throughout the year

High School

One to One technology roll-out for 120 students

A STEM Laptop Mobile Cart supports learning through robotics and data collection probes and software

Middle School

One to One technology roll-out for all 7th grade students

6 Mobile Laptop Carts grades 5-8

Elementary School

K-1 students all receive a Windows 8 tablet for One to One learning

8 Mobile Laptop Carts grades 2-5

Hour of Code—Coding activities for elementary students

**K—1 Students
get a new
learning tool!**



Student Services

PBIS

Positive Behavioral Interventions and Support (PBIS) allows for clear language for expected behaviors, acknowledgement of appropriate choices and strategies for those who need additional support.

RTI

Response to intervention (RTI) - RTI is another set of data that is used to determine the appropriate level of instruction for individual students. The RTI process monitors the student's progress and uses that information to revise intervention strategies.

Identified Students

- 11.14% of students identified with disabilities
- 15.97% of students identified as gifted

Preschool

Head Start and Pre-school programs serve 3 to 5 year olds. Each offers additional time for skill development to better prepare kindergarten students for school.

"Individuals develop and learn in a variety of ways."



Student Leadership and Activities

"Life-long learning is fundamental for the success of a healthy society."

18 extra-curricular clubs are offered for 9th—12th grade students.



Varsity M • Bulldog Pride • Interact • National Honor Society • Student Council • Habitat for Humanity • Envirothon
Academic Quiz Team • Spanish Club • Show Choir • Band • Chess Club • Friends of Rachel • FFA • Business Professionals of America
Mentoring Program • Future Teachers of America • Believe In Ohio

Middle School Students

65% of Middle School students involved in one or more of the 17 extra-curricular offerings.



Current Events League • Daughters of the American Revolution Essay contest • Science Olympiad • Scripps Spelling Bee • National Geography Bee • Math Counts • Power of the Pen • Future Teachers of America • Tutoring • Drama Class Play • Drug Prevention Focus • Life Skills

Elementary Students

- Girls on the Run
- Kindness and Caring Club
- Grandparents' Day Celebration
- Veterans Day Celebration
- Choir Concerts & 5th Grade Band
- Great Nighttime Reading Adventure





Freshman Focus: Nationally acclaimed, award-winning freshmen mentoring program for all 9th grade students at Milton-Union. We prepare students for success!



Fine Arts



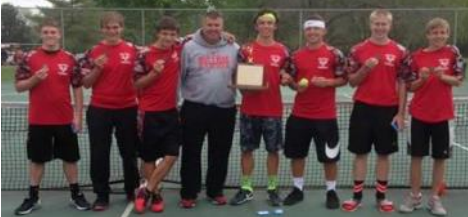
Fine Arts



Music



Athletics



"Assisting the educational process in instilling and developing skills necessary for future success."



**SWBL Buckeye Division Champions in Volleyball, Boys' Tennis, Wrestling and Boys' Cross Country · SWBL Buckeye District Champions in Boys' Cross Country
SWBL Buckeye Division Runner-up in Girls' Soccer**

Service

Angel Network * Rotary * Pennies for Patients * Blood Bank * Operation Cover-Up * Food Bank
Habitat for Humanity * High School Community Service Project * Coins for Chron's

Giving Back

"Communities in partnership with schools build strong, responsible citizens."



Partnerships—Making it happen with the help of . . .

Rotary, M-U Education Foundation, Miami County Parks District, Miami County Foundation, Council of Churches, Good Samaritan Behavioral Health, Miami County Recovery Council, Ohio Means Jobs, MVCTC, Wright State University, M-U Alumni, Miami County Sheriff's Department, Wright-Patterson Air Force Base Gaming Research

Safety and Security

"Students learn in a safe, caring and respectful environment."



A.L.I.C.E. Alert, Lockdown, Inform, Counter and Evacuate

ALICE Training is the first program of its kind that uses options-based age-appropriate, proactive, survival strategies in our schools.



At the Milton-Union Exempted Village School District, we strive to make sure that our schools are safe, caring, healthy and an inclusive place in which to learn and work. Fire drills, visitor badges/sign in and other safety and security protocols and practices are important components of our commitment to maintaining a safe and secure school environment. Any parent or guardian is required to show a photo ID when releasing their child to them.





Facilities



NATIONAL GREEN RIBBON SCHOOL

Milton-Union Exempted Village School District

- 1 out of 9 districts in the nation
- Operating cost \$0.62 per sq. ft. for electric and gas
- Top 1% of the state in Energy Savings



Energy Star

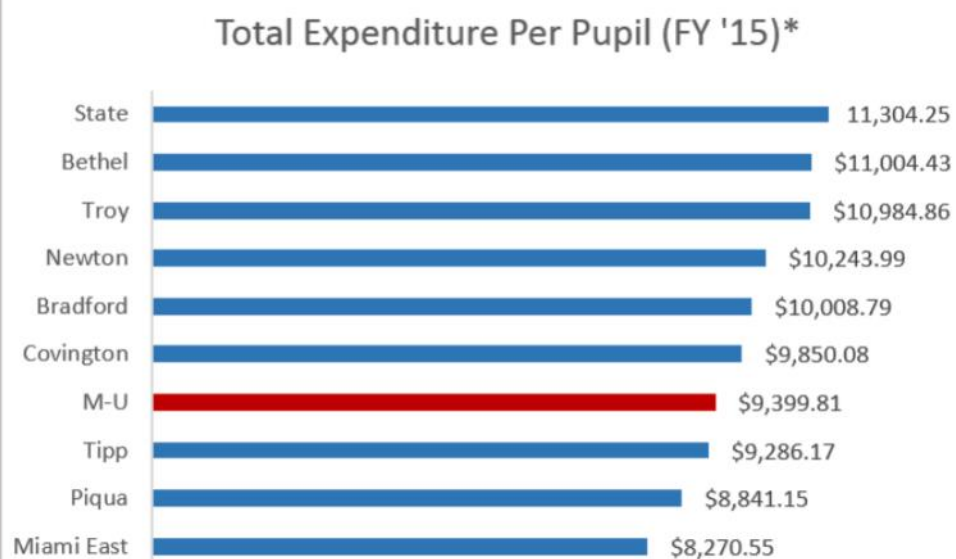
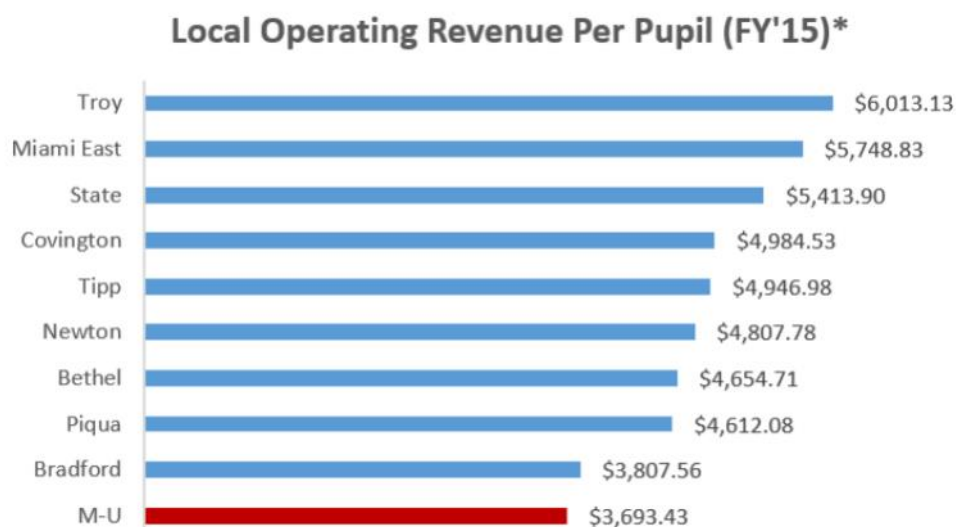


93 out of 100

Teaching students to conserve energy through a variety of “green” initiatives

Finances

Milton-Union receives the *least* amount of local revenue per pupil in the county, \$3,693.43



*Based on Ohio Department of Education Office of School Options and Finance

Milton-Union delivers high achievement at one of the lowest costs in the county!

GRANT MONEY—\$1,280,373.12

→ Believe In Ohio—\$8,750.00

→ Milton-Union Education Foundation Classroom Grants—\$12,994.19

→ Miami County Foundation—\$ 16,358.00

→ Straight A REACH Grant—\$1,239,273.38 (MU, Piqua, FM)

→ MAC Grant—\$997.55

→ Walmart Community Grant—\$ 1,000.00

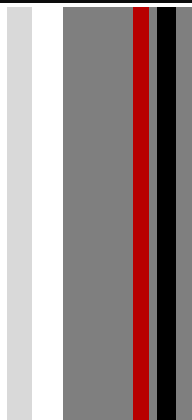
→ Ohio Ready Schools—\$1,000.00

Milton-Union Exempted Village Schools

Belief Statements



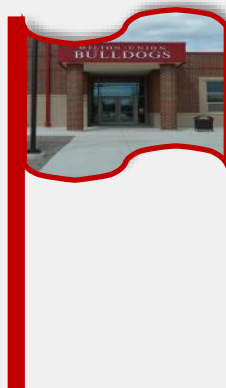
- We are a student focused district. Our schools must develop student skills while utilizing the resources from the outside as well as inside the organization.
- We must employ the best and brightest and focus on nurturing our students in order to assure they reach their highest potential.
- The administration, staff, and Board have a responsibility to work collaboratively in a climate of mutual respect, focusing on what is best for students.
- The support of the community is critical to our District's success and will be earned through effective, open, and honest communication and demonstrated results.
- We have an obligation to preserve and enhance the community's assets by being good fiscal stewards. This will assure that we provide a safe, well- maintained environment for learning.
- We must be accountable for removing barriers and providing opportunities which could impact the achievement of all students.
- Extracurricular and co-curricular programs and activities are an integral part of the educational process and contributes positively to the character of our students while bringing recognition, pride, and support from the community.



Milton-Union Elementary School
7620 Milton-Potsdam Road
West Milton, Ohio 45383



Milton-Union Middle School
7630 Milton-Potsdam Road
West Milton, Ohio 45383



Milton-Union High School
7640 Milton-Potsdam Road
West Milton, Ohio 45383



Milton-Union Exempted Village School District
Central Office
7610 Milton-Potsdam Road
West Milton, Ohio 45383



Road to Success



Join
Milton-Union
on our road
to the future