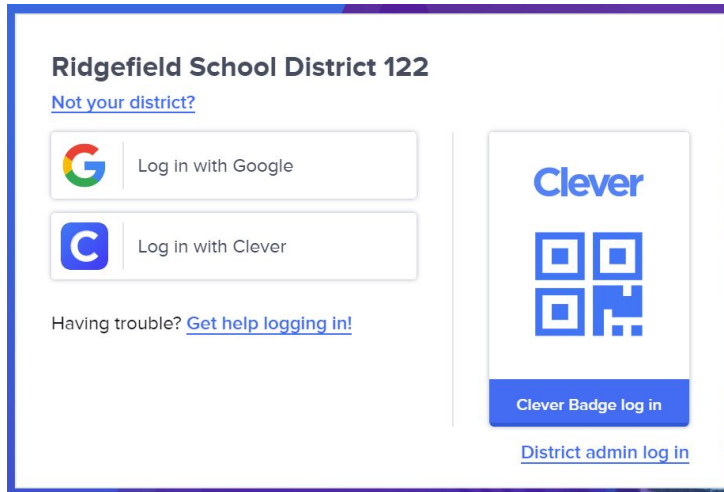


Clever at Home Login Instructions

Below are directions on how to access iReady, Imagine Learning, and Google Classroom instruction lessons at home. These lessons are personalized and based on the specific needs of your child in Math and Reading. Feel free to use this as a resource to support your child's growth, challenge them, and reinforce the skills learned in school.

1. Go to this site: <https://clever.com/in/ridgefield>
2. Once there click "Login with Clever"

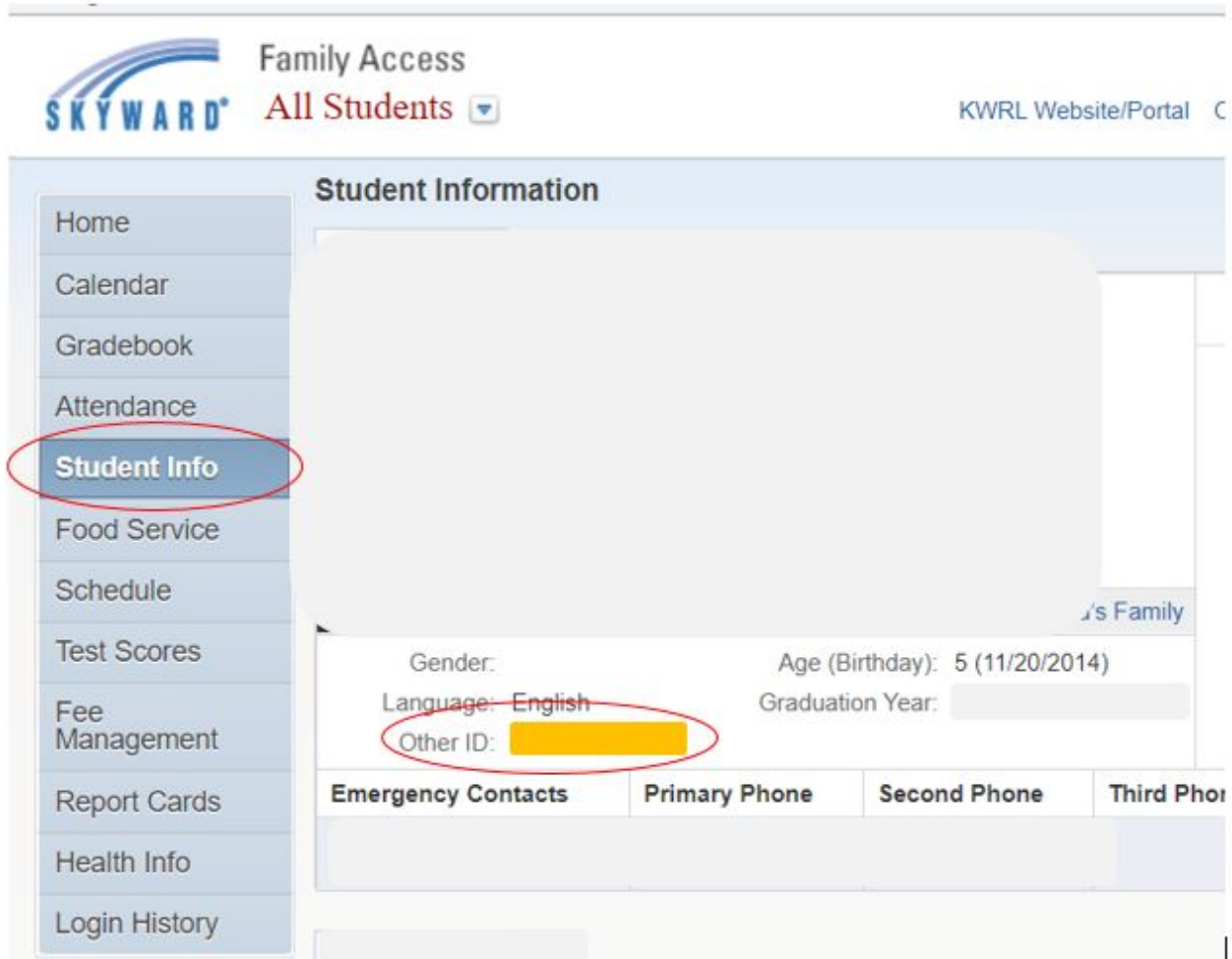


3. Log in using your student's **OTHER ID** and **birth date** (password must include forward slashes ex: 01/01/2001)

Username: 00*****

Password:

Don't know your student's **OTHER ID**? Log into Skyward Family Access, Click "Student Info" on the left.



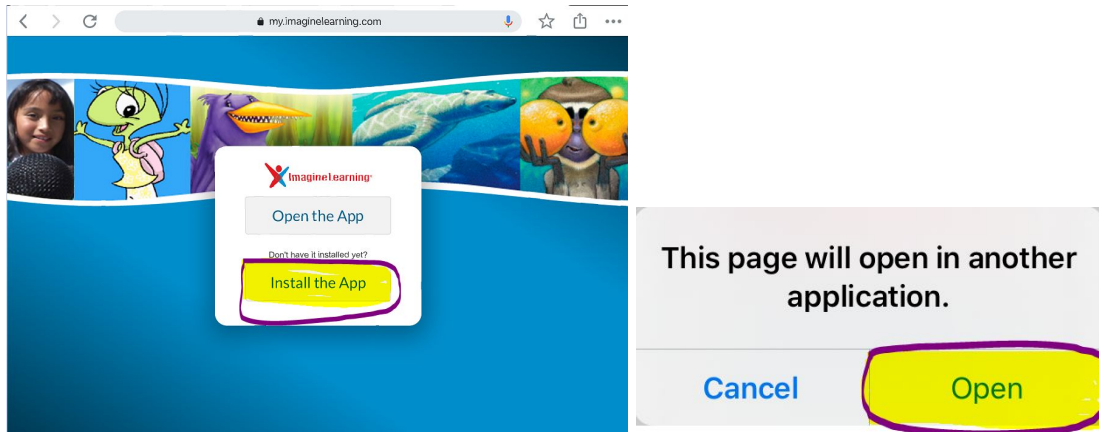
The screenshot shows the Skyward Family Access interface. At the top left is the Skyward logo, followed by "Family Access" and "All Students" with a dropdown arrow. On the top right, it says "KWRL Website/Portal". A left-hand navigation menu lists various options: Home, Calendar, Gradebook, Attendance, **Student Info** (circled in red), Food Service, Schedule, Test Scores, Fee Management, Report Cards, Health Info, and Login History. The main content area is titled "Student Information" and contains a large greyed-out area. Below this, there are fields for "Gender:", "Age (Birthday): 5 (11/20/2014)", "Language: English", and "Graduation Year:". The "Other ID:" field is highlighted with a yellow background and circled in red. Below these fields is a table with four columns: "Emergency Contacts", "Primary Phone", "Second Phone", and "Third Phone".

4. Click on an app

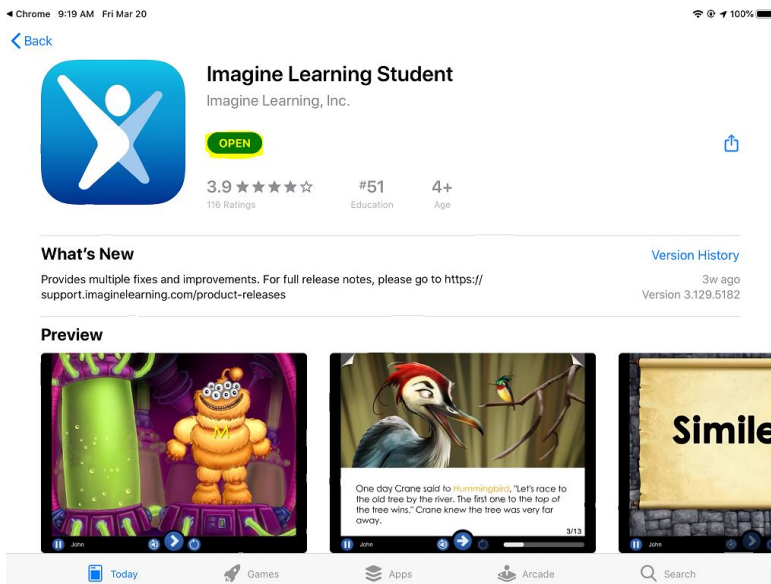


Three app icons are displayed in a row. The first icon is for "i-Ready", showing a white cube on a blue and green background. The second icon is for "Imagine Language & Literacy", featuring a blue robot character. The third icon is for "Google Classroom", showing a green square with a white person icon. Each icon is labeled with its name below it.

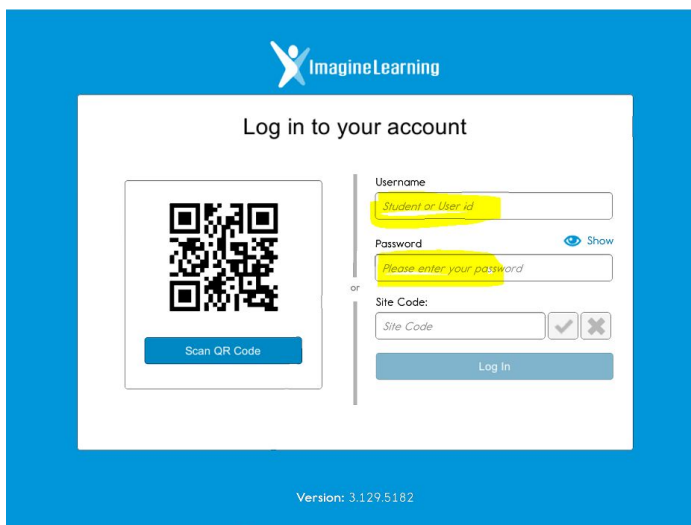
When installing Imagine Learning on an iPad. Through the clever app click on Imagine Language & Literacy (i.e. Imagine Learning) icon you will be asked to Install the App, through the app store. Click **Install the App & then click open**.



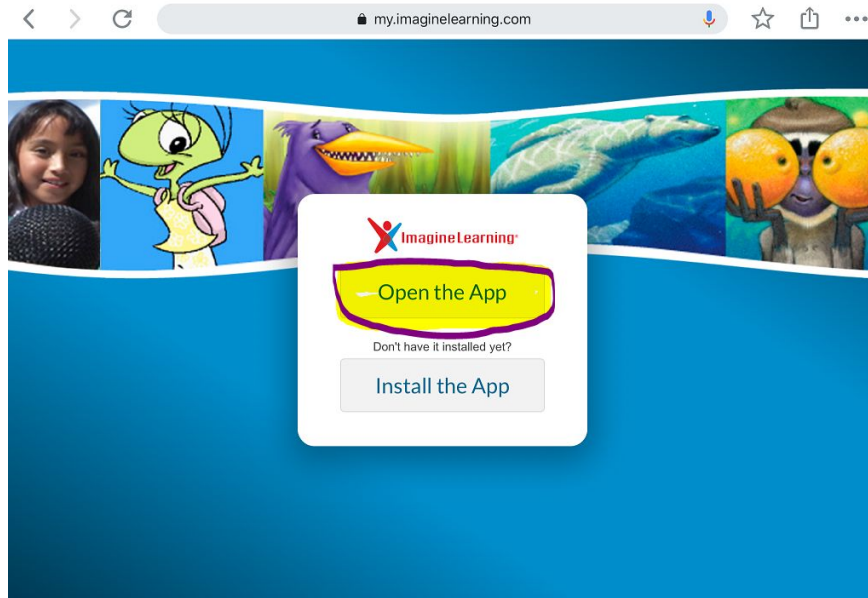
Download the Imagine Learning App, from the App Store (click **Get**, where you see OPEN highlighted below)



Imagine Learning Login information is the same as what you entered to get into clever. You do not need the site code.



Then go back to clever to access Imagine Learning learning by clicking 'Open the App'



Still having trouble logging in? Please send an email to: ImagineLearningHelp@ridgefieldsd.org

Imagine Learning is an adaptive application. Your child is automatically placed at their grade level. As your child uses the app it will adjust to provide appropriate experiences for your child. If the work is too challenging to begin with the lessons will adapt to their responses with more appropriate activities. If the work is not challenging enough, it will continue to offer more challenging activities. It may take several sessions before the system identifies activities that are appropriate for your child.