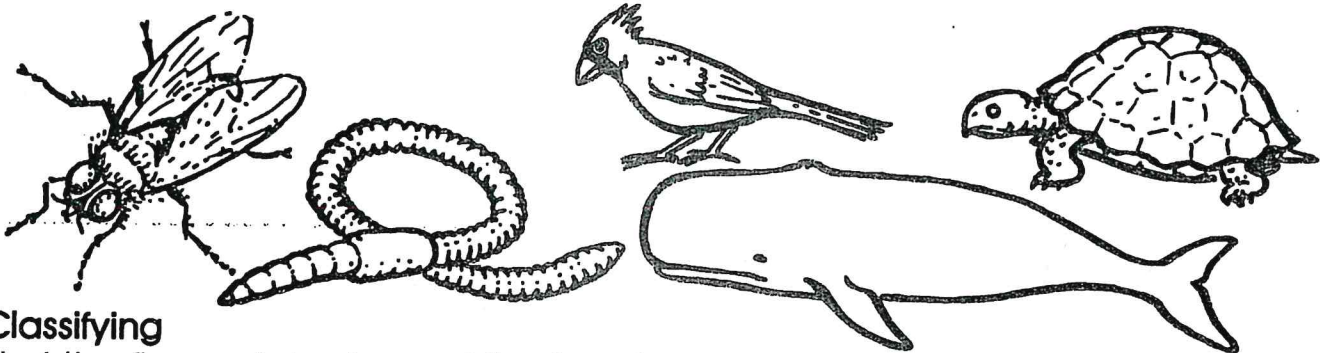


Name _____

Backbone or No Backbone?

Which part of your body helps you stand tall or sit up straight? It is your backbone. You are a member of a large group of animals that all have backbones. Animals with backbones are called **vertebrates**. Birds, fish, reptiles, amphibians, and mammals are all vertebrates.

Some animals do not have backbones. These animals are called **invertebrates**. Worms, centipedes, and insects are all invertebrates.



Classifying

Find the five vertebrates and five invertebrates hidden in the wordsearch. Then write them in the correct group.

Invertebrates

1. _____
2. _____
3. _____
4. _____
5. _____

B R A B B I T B U D
E A G I R A F F E L
E W O F H E P R U W
T O G K L C M O T H
L R N F R Y S G I A
E M L I O N O J E L
R S P I D E R M R E

Vertebrates

1. _____
2. _____
3. _____
4. _____
5. _____

Your neighborhood has many animals in or near it. Add their names to the lists.

Invertebrates

6. _____
7. _____
8. _____
9. _____
10. _____

Vertebrates

6. _____
7. _____
8. _____
9. _____
10. _____

Find Out

There are many more invertebrates than vertebrates. Nine out of ten animals is an invertebrate. Which group has the largest animals? Which group has the smallest animals?

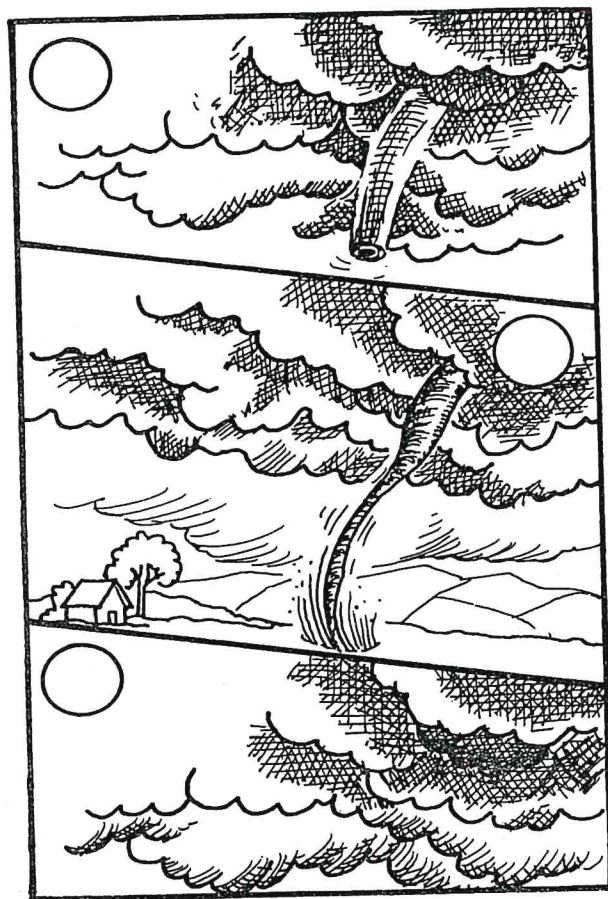
Name _____

A Funnel Cloud—Danger!

Did you know that a tornado is the most violent wind storm on Earth? A tornado is a whirling, twisting storm that is shaped like a funnel.

A tornado usually occurs in the spring on a hot day. It begins with thunderclouds and thunder. A cloud becomes very dark. The bottom of the cloud begins to twist and form a funnel. Rain and lightning begin. The funnel cloud drops from the dark storm clouds. It moves down toward the ground.

A tornado is very dangerous. It can destroy almost everything in its path.



Circle.

A _____ thunder tornado is the most violent wind storm on Earth.

Check.

Which words describe a tornado?

☐ whirling ☐ twisting ☐ icy ☐ funnel-shaped ☐ dangerous

Underline.

A funnel shape is:



Write and Circle.

A tornado usually occurs in the _____ on a _____ day.
autumn spring cool hot

Write 1-2-3 below and in the picture above.

- ☐ 1 The funnel cloud drops down to the ground.
- ☐ 2 A tornado begins with dark thunderclouds.
- ☐ 3 The dark clouds begin to twist and form a funnel.

Name _____

Endangered Animal Acrostic

Using the animal names below, write the answers to the following definitions in the spaces provided. The circled letters are used as clues for your answers.

blue whale

jaguar

pronghorn

cheetah

okapi

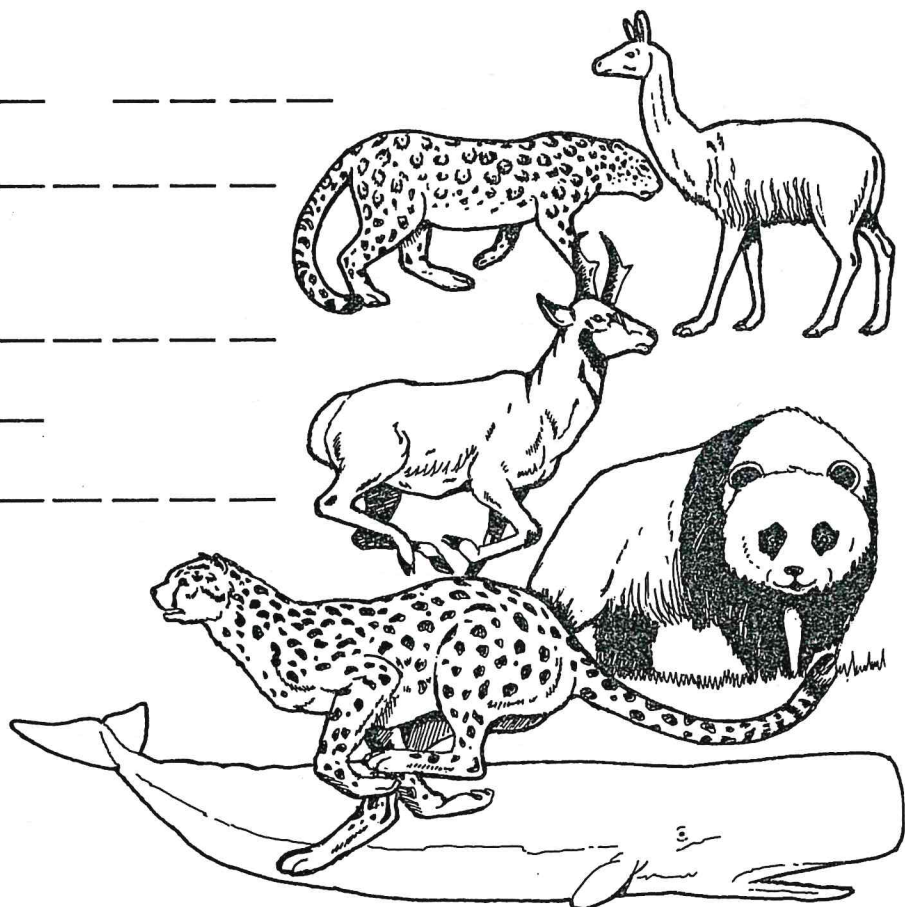
polar bear

vicuna

yak

giant panda

1. — (O) ———
2. — (R) ———
3. — (A) ———
4. — (N) ———
5. — (G) ———
6. — (U) ———
7. — (T) ———
8. — (A) ———
9. — (N) ———



SCIENCE

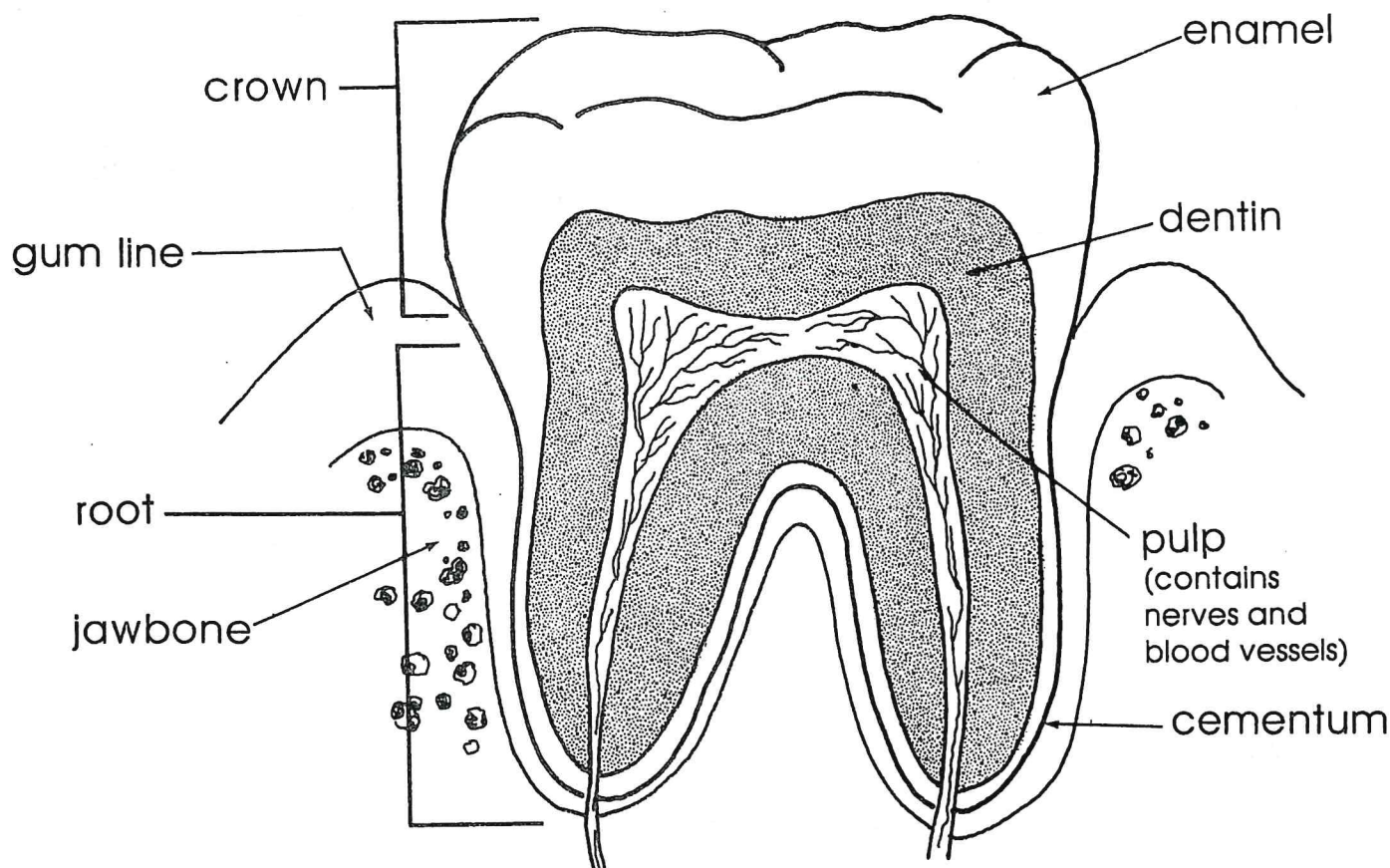
1. large animal with white coat
2. upright horns and sheeplike feet
3. only living relative of the giraffe
4. lives in bamboo forests in southwestern China
5. largest wild cat in the Western Hemisphere

6. largest animal on Earth
7. cat that can run over 60 miles per hour
8. species of wild cattle in Tibet
9. member of the camel family in South America

Name _____

Tooth Talk

Study the drawing of the tooth to help you fill in the blanks.

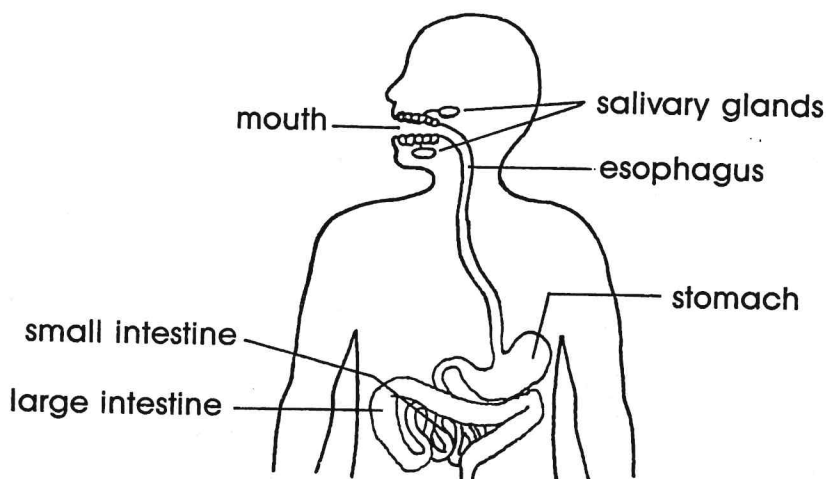


1. The _____ is the part of the tooth above the _____.
2. The _____ of the tooth grows into the _____.
3. The outer covering of the crown is called _____.
4. The majority of the tooth is made of _____.
5. Any pain is transmitted to the brain through nerves in the _____.
6. _____ covers the dentin in the root.

Name _____

Just Swallow It!

Use this diagram to help you number the sentences in the correct order to show what happens when you swallow a bite of food.



- _____ While your teeth are breaking the food into tiny pieces, saliva is making the food softer.
- _____ Whatever the body cannot use goes into the large intestine.
- _____ While the food is in your stomach, more juices help to dissolve it.
- _____ First you must pick up your sandwich in your hand.
- _____ When the food in your mouth is soft enough, you swallow it.
- _____ Move your hand to your mouth.
- _____ When the food has dissolved in your stomach, it goes to your small intestine.
- _____ Put a corner of the sandwich in your mouth.
- _____ As you swallow your food, it moves down the esophagus to your stomach.
- _____ Use your teeth to take a bite of the sandwich.
- _____ While the food is in your small intestine, the body absorbs whatever it needs.

What happens when you try to swallow too big of a bite?

Write a sentence about a kind of food that is good for your body.