



HILANDER highlights

MARCH 2019

WHOLE CHILD FOCUS Social Emotional Learning

7 Social Emotional Centers
(1 in each elementary)

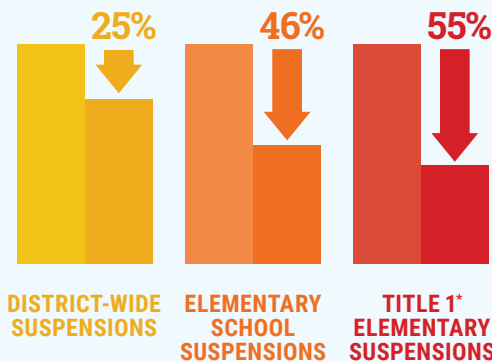


20 elementary classes piloting
Second Step SEL program



% REDUCTION IN STUDENT SUSPENSIONS

Projected 2018-19 vs. 2017-2018 data



*Federally identified schools with high numbers or high percentages of children from low-income families



Thanks to lower district suspension rate!

SEL offers big gains in well being & academics

Kelso School District has been keenly focused on building a robust Social Emotional Learning (SEL) program for over a year, as part of our Whole Child Initiative. Although most of the work during the first two years is happening at our elementary schools, all teaching staff and school administrators in the district have received training and information that give them a greater ability to think differently about our students and better understand what those students may have gone through before they walk in our doors.



Hilander Highlights is a publication of Kelso School District to keep community members informed about our schools. A print version will be mailed twice a year. You can read other issues online and subscribe to emailed versions at bit.ly/Hilander.

Facts About Social Emotional Learning

5

SEL COMPETENCIES:



average increase in academic performance over students who did not receive SEL instruction

11

taxpayer dollars are saved for every \$1 invested in SEL programming



DROPOUT RATES ... SCHOOL & CLASSROOM BEHAVIOR ISSUES ... SUBSTANCE ABUSE ... TEEN PREGNANCY ... MENTAL HEALTH PROBLEMS ... CRIMINAL BEHAVIOR ...

decrease

when students participate in SEL programs



plus

SEL students have 10% fewer psychological, behavioral, or substance abuse problems when they reach the age of 25

&

18 years later, students exposed to SEL continue to do better than their peers on: positive social behaviors, empathy, and teamwork

SCHOOL BOARD:
Leah Moore, President
Karen Grafton, Vice President
Mike Haas
Darr Kirk
Howard Sharples

SUPERINTENDENT: Mary Beth Tack

CHILD FIND INFORMATION

Kelso School District will ensure that all students with disabilities who are eligible from birth through 21 years of age, residing within our attendance area, have available to them a free and appropriate public education in the least restrictive environment. You can initiate a referral through your local schools or call us at 360-501-1904.

WE ARE KELSO



SLC mentors make a difference for nine Wallace students

On Thursdays the structured learning classroom (SLC) at Wallace gets a visit from their high school mentors. The nine students in that class are there because their behavioral needs or mental health benefits from a more structured environment. Read about the powerful mentoring their older peers are doing at bit.ly/SLC-mentors



SEL Team builds strong system of supports

This small, but mighty, group of five is responsible for implementing processes that are changing how teaching and learning happens in our schools. Starting their work just last summer, they've delivered trainings and presentations, vetted curricula, and done a lot of foundational work. Read more at bit.ly/KSD-SELteam

NON-DISCRIMINATION STATEMENT

The Kelso School District is an equal opportunity employer and is in compliance with state and federal anti-discrimination regulations and other requirements.