

TABLE OF CONTENTS

G--PERSONNEL

GA Personnel Policy Organization

GAA Goals and Objectives (See BDA, CM, CMA and JA)

GAAA Equal Opportunity and Non-Discrimination

GAAB..... Complaints of Discrimination (See JDDC, JGECA and KN)

GAAC Sexual Harassment (See GAF and JGEC)

GAACA..... Racial Harassment (See GAF, JGECA and KN)

GAAD Child Abuse (See JCAC, and JGEC)

SRS Access to Students on School Premises

Cooperation Between School and Agencies

Reporting Procedure

GAAE..... Bullying by Staff (See EBC, GAAB, JDD and JDDC)

Cyber Bullying

GAAF..... Emergency Safety Interventions

Definitions

Prohibited Types of Restraint

Use of Emergency Safety Interventions

ESI Restrictions

Use of Seclusion

Training

Notification and Documentation

Law Enforcement, School Resource, and Campus Security Officers

Documentation of ESI Incidents

Reporting Data

Parent Right to Meeting on ESI Use

Local Dispute Resolution Process

GACA Positions (See CD and GACB)

GACB	Job Descriptions (See CD and GACA)
GACC	Recruitment and Hiring
	Recruitment
	Hiring
	Hiring Sequence
GACCA	Nepotism
	Supervision Limitations
GACD	Employment Eligibility Verification (Form I-9) (See GAK)
GACE	Assignment and Transfer
GAD	Employee Development Opportunities
GAE	Complaints
GAF	Staff-Student Relations (See GAAC, GAACA, JGEC, JGECA and KN)
GAG	Conflict of Interest
GAH	Participation in Community Activities
GAHB	Political Activities (See GBRK and GCRK)
	Holding Public Office
	Political Activity in the Schools
GAI	Solicitations (See KDC)
GAJ	Gifts (See JL and KH)
	Gifts to Staff Members
GAK	Personnel Records (See CEI, CGI, GACD, GBI, and GCI)
	Requests for References
	Immunity Provided
	Prohibition on Aiding and Abetting Sexual Abuse
GAL	Salary Deductions (FLSA) (See GAOF)
GAM	Personal Appearance
GAN	Travel Expenses (See BBBF, CG, CEF, GBRC and GCA)
GANA	Expense Reimbursement and Credit Cards (See CEF and GAN)

GAO	Maintaining Proper Control (See JGFB)
GAOA	Drug Free Workplace (See LDD)
GAOB	Drug Free Schools (See JDDA and LDD)
	Employee Conduct
GAOC	Use of Tobacco Products and Nicotine Delivery Devices (See JCDA)
GAOD	Drug and Alcohol Testing
GAOE	Workers Compensation and Disability Benefits
	Choice of Physician
GAOF	Salary Deductions (See GAL)
GAR	Communicable Diseases
GARA	Bloodborne Pathogen Exposure Control Plan
GARI	Family and Medical Leave
GARID	Military Leave
GARJ	Health Insurance
GAT	Staff Use of Communication Devices
GBH	Supervision
GBI	Evaluation (See GAK)
	Availability of Evaluation Documents
	Evaluation Criteria
GBK	Suspension
GBN	Nonrenewal and Termination
GBO	Resignation
	Exit Interviews
GBQA	Reduction of Teaching Staff
GBR	Working Schedule (See JGFB)
	Work Schedules
	Attendance Required
GBRC	Professional Development (See GAN and GBRH)

GBRD	Staff Meetings
GBRE	Additional Duty
GBRF	Student and Parent Conferences
GBRG	Non-School Employment
GBRGA	Consulting
GBRGB	Tutoring for Pay
GBRH	Leaves and Absences (See GBRC)
GBRIBA	Disability Leave
GBRJ	Substitute Teaching
GBU	Ethics (See IA and IKB)
GCA	Compensation and Work Assignments (See GAN)
	Work Assignments
	Attendance Required
	Workweek
	Classification of Employees
	Overtime
	Compensation for Out-of-Town/Overnight Trips
GCH	Supervision
GCI	Classified Employee Evaluation (See GAK)
GCIA	Evaluation of Coaches and Sponsors
GCK	Suspension
GCRF	Non-School Employment
GCRG	Leaves and Absences
	Paid Leave
	Unpaid Leave
	Jury Leave
GCRH	Vacations

GCRI..... Paid Holidays

GA **Personnel Policy Organization**

GA

These policies are arranged in the following manner:

- GA policies apply to all employees.
- GB policies apply to teachers and other licensed staff covered by the negotiated agreement.
- GC policies apply to classified/non-licensed staff.

Approved:

KASB Recommendation - 2/98; 1/05; 4/07

GAA Goals and Objectives (See BDA, CM, CMA and JA)

GAA

The goal of the personnel policies set forth in this policy section is to create the best possible educational climate for the students of the school district. To this end, these personnel policies are designed to prevent misunderstanding by the district's personnel of their duties, responsibilities, and privileges.

All employees shall follow all applicable board policies, rules, regulations, and supervisory directives.

All personnel handbooks shall be approved by the board and adopted, by reference, as a part of these policies and rules.

Approved:

KASB Recommendation - 2/98; 4/07; 12/13; 06/19

GAAA Equal Employment Opportunity and Nondiscrimination

GAAA

The board shall hire all employees on the basis of ability and the district's needs.

The district is an equal opportunity employer and shall not discriminate in its employment practices and policies with respect to hiring, compensation, terms, conditions, or privileges of employment because of an individual's race, color, national origin, religion, sex, age, disability, or genetic information. Discrimination on any of these characteristics will not be tolerated. The district will make reasonable accommodations to applicants and employees who need them for medical or religious reasons, as required by law.

Inquiries regarding compliance may be directed to the Junior High / High School Principal, 2274 6th Road, Blue Rapids, KS 66411, 785-363-2508 or to:

Equal Employment Opportunity Commission
Gateway Tower II
400 State Ave., Suite 905
Kansas City, KS 66101
(913) 551-5655
kansascityintake@eeoc.gov
or

Kansas Human Rights Commission
900 SW Jackson, Suite 568-S
Topeka, KS 66612-1258
(785) 296-3206
khrs@ks.gov

or

United States Department of Education
Office for Civil Rights
One Petticoat Lane
1010 Walnut Street, Suite 320
Kansas City, Missouri 64106
(816) 268-0550
OCR.KansasCity@ed.gov

Approved:

KASB Recommendation - 2/98; 8/98; 6/06; 4/07; 12/15; 10/17 ; 6/19

The district is committed to maintaining a working and learning environment free from discrimination, insult, intimidation or harassment due to race, color, national origin, religion, sex, age, genetic information or disability. Any incident of discrimination in any form shall promptly be reported to an employee's immediate supervisor, the building principal or the district compliance coordinator for investigation and corrective action by the building or district compliance officer. Any employee who engages in discriminatory conduct shall be subject to disciplinary action, up to and including termination.

Discrimination against any individual on the basis of race, color, national origin, sex, disability, age, genetic information, or religion in the admission or access to, or treatment or employment in the district's programs and activities is prohibited. JH / HS Principal, 2274 6th Road, Blue Rapids, KS, 785-363-2508, has been designated to coordinate compliance with nondiscrimination requirements contained in Title VI and Title VII of the Civil Rights Act of 1964, Title IX of the Education Amendments of 1972, Section 504 of the Rehabilitation Act of 1973, and The Americans with Disabilities Act of 1990.

Complaints of discrimination should be addressed to an employee's supervisor or to the building principal or the compliance coordinator. Complaints against the superintendent should be addressed to the board of education.

Complaints of discrimination will be resolved using the district's discrimination complaint procedures in policy KN

The district prohibits retaliation or discrimination against any person for opposing discrimination, including harassment; for participating in the complaint process; or making a complaint, testifying, assisting, or participating in any investigation, proceeding, or hearing.

Approved:

KASB Recommendation - 2/98; 8/98; 4/07; 6/09; 6/15; 10/17; 6/19

GAAC Sexual Harassment (See GAF and JGEC)

GAAC

The board of education is committed to providing a positive and productive working and learning environment, free from discrimination on the basis of sex, including sexual harassment. Sexual harassment will not be tolerated in the school district. Sexual harassment of employees or students of the district by board members, administrators, certificated and support personnel, students, vendors, and any others having business or other contact with the school district is strictly prohibited.

Sexual harassment is unlawful discrimination on the basis of sex under Title IX of the Education Amendments of 1972, Title VII of the Civil Rights Act of 1964, and the Kansas Acts Against Discrimination. All forms of sexual harassment are prohibited at school, on school property, and at all school-sponsored activities, programs or events. Sexual harassment against individuals associated with the school is prohibited, whether or not the harassment occurs on school grounds.

It shall be a violation of this policy for any student, employee, or third party (visitor, vendor, etc.) to sexually harass any student, employee, or other individual associated with the school. It shall further be a violation for any employee to discourage a student or another employee from filing a complaint, or to fail to investigate or refer for investigation, any complaint lodged under the provisions of this policy. Violation of this policy by any employee shall result in disciplinary action, up to and including termination.

Sexual harassment shall include, but not be limited to, unwelcome sexual advances, requests for sexual favors, and other verbal or physical conduct of a

sexual nature when: (1) submission to such conduct is made either explicitly or implicitly a term or condition of an individual's employment; (2) submission to or rejection of such conduct by an individual is used as the basis for employment decisions affecting such individual; or (3) such conduct has the purpose or effect of unreasonably interfering with an individual's work performance or creating an intimidating, hostile or offensive working environment.

Sexual harassment may result from verbal or physical conduct or written or graphic material. Sexual harassment may include, but is not limited to: verbal harassment or abuse; pressure for sexual activity; repeated remarks to a person, with sexual or demeaning implication; unwelcome touching; or suggesting or demanding sexual involvement accompanied by implied or explicit threats concerning an employee's job status.

The district encourages all victims of sexual harassment and persons with knowledge of such harassment to report the harassment immediately. Complaints of sexual harassment will be promptly investigated and resolved.

Employees who believe they have been subjected to sexual harassment should discuss the problem with their immediate supervisor. If an employee's immediate supervisor is the alleged harasser, the employee should discuss the problem with the building principal or the district compliance coordinator. Employees who do not believe the matter is appropriately resolved through this meeting may file a formal complaint under the district's discrimination complaint procedure in policy KN.

Complaints received will be investigated to determine whether, under the totality of the circumstances, the alleged behavior constitutes sexual harassment under the definition outlined above. Unacceptable conduct may or may not constitute sexual harassment, depending on the nature of the conduct and its severity, pervasiveness and persistence. Behaviors which are unacceptable but do not constitute harassment may also result in employee discipline.

If discrimination or harassment has occurred, the district will take prompt, remedial action to prevent its reoccurrence.

Any employee who witnesses an act of sexual harassment or receives a complaint of harassment from another employee or a student shall report the complaint to the building principal. Employees who fail to report complaints or incidents of sexual harassment to appropriate school officials may face disciplinary action. School administrators who fail to investigate and take appropriate corrective action in response to complaints of sexual harassment may also face disciplinary action.

Initiation of a complaint of sexual harassment in good faith will not adversely affect the job security or status of an employee, nor will it affect his or her compensation. Any act of retaliation or discrimination against any person who has filed a complaint or testified, assisted, or participated in any investigation, proceeding, or hearing involving a sexual harassment complaint is prohibited. Any person who retaliates is subject to immediate disciplinary action, up to and including termination of employment.

To the extent possible, confidentiality will be maintained throughout the investigation of a complaint. The desire for confidentiality must be balanced with the district's obligation to conduct a thorough investigation, to take appropriate corrective action or to provide due process to the accused.

False or malicious complaints of sexual harassment may result in corrective or disciplinary action against the complainant.

A summary of this policy shall be posted in each district facility, shall be published in employee handbooks and on the district's website as directed by the district compliance coordinator. Notification of the policy shall be included in the school newsletter or published in the local newspaper annually.

Approved:

KASB Recommendation – 2/98; 8/98; 7/03; 6/04; 4/07; 6/15; 12/18

The board of education is committed to providing a positive and productive working and learning environment, free from discrimination, including harassment, on the basis of race, color, national origin, or disability. Racial and disability harassment will not be tolerated in the school district. Racial or disability harassment of employees or students of the district by board members, administrators, certified and support personnel, students, vendors, and any others having business or other contact with the school district is strictly prohibited.

Racial harassment is unlawful discrimination on the basis of race, color or national origin under Titles VI and VII of the Civil Rights Act of 1964, and the Kansas Acts Against Discrimination. Disability harassment is unlawful discrimination on the basis of disability under Section 504 of the Rehabilitation Act of 1973 and the Americans with Disabilities Act. All forms of racial and disability harassment are prohibited at school, on school property, and at all school-sponsored activities, programs or events. Racial or disability harassment against individuals associated with the school is prohibited, whether or not the harassment occurs on school grounds.

It shall be a violation of this policy for any student, employee, or third party (visitor, vendor, etc.) to racially harass or harass on the basis of disability any student, employee, or other individual associated with the school. It shall further be a violation for any employee to discourage a student or another employee from filing a complaint, or to fail to investigate or refer for investigation, any complaint lodged under the provisions of this policy.

Violations of this policy by any employee shall result in disciplinary action, up to and including termination.

Harassment prohibited by this policy includes racially or disability-motivated conduct which:

- Affords an employee different treatment, solely on the basis of race, color, national origin, or disability, in a manner which interferes with or limits the ability of the employee to participate in or benefit from the services, activities or programs of the school;
- Is sufficiently severe, pervasive or persistent so as to have the purpose or effect of creating a hostile working environment;
- Is sufficiently severe, pervasive or persistent so as to have the purpose or effect of interfering with an individual's work performance or employment opportunities.

Racial or disability harassment may result from verbal or physical conduct or written or graphic material.

The district encourages all victims of racial or disability harassment and persons with knowledge of such harassment to report the harassment immediately. Complaints of racial or disability harassment will be promptly investigated and resolved.

Employees who believe they have been subjected to racial or disability harassment should discuss the problem with their immediate supervisor. If an employee's immediate supervisor is the alleged harasser, the employee should discuss the problem with the building principal or the district compliance coordinator. Employees who do not believe the matter is appropriately resolved through this meeting may file a formal complaint under the district's discrimination complaint procedure in policy KN.

Complaints received will be investigated to determine whether, under the totality of the circumstances, the alleged behavior constitutes racial or disability harassment under the definition outlined above. Unacceptable conduct may or may not constitute racial or disability harassment, depending on the nature of the conduct and its severity, pervasiveness and persistence. Behaviors which are unacceptable but do not constitute harassment may also result in employee discipline.

If discrimination or harassment has occurred, the district will take prompt, remedial action to prevent its reoccurrence.

Any employee who witnesses an act of racial or disability harassment or receives a complaint of harassment from another employee or a student shall report the complaint to the building principal. Employees who fail to report complaints or incidents of racial or disability harassment to appropriate school officials may face disciplinary action. School administrators who fail to investigate and take appropriate corrective action in response to complaints of racial or disability harassment may also face disciplinary action, up to and including termination.

Initiation of a complaint of racial or disability harassment in good faith will not adversely affect the job security or status of an employee, nor will it affect his or her compensation. Any act of retaliation or discrimination against any person who has filed a complaint or testified, assisted, or participated in any investigation, proceeding, or hearing involving a racial or disability harassment complaint is prohibited. Any person who retaliates is subject to immediate disciplinary action, up to and including termination from employment.

To the extent possible, confidentiality will be maintained throughout the investigation of a complaint. The desire for confidentiality must be balanced with the district's obligation to conduct a thorough investigation, to take appropriate corrective action or to provide due process to the accused.

False or malicious complaints of racial or disability harassment may result in corrective or disciplinary action against the complainant.

A summary of this policy shall be posted in each district facility and shall be published in employee handbooks and on the district's website as directed by the district compliance coordinator. Notification of the policy shall be included in the school newsletter or published in the local newspaper annually.

Approved:

KASB Recommendation – 8/98; 7/03; 4/07; 9/12; 6/15; 12/18

Any district employee who has reason to know or suspect a child has been injured as a result of physical, mental or emotional abuse or neglect or sexual abuse, shall promptly report the matter to the local Kansas Department for Children and Families (DCF) office or to the local law enforcement agency if the DCF office is not open. Employees may file a report of suspected abuse anonymously to either DCF by phoning 1-800-922-5330 or to local law enforcement officials. The Code for Care of Children also provides civil immunity from prosecution if the report is made in good faith.

The employee making the report will not contact the child's family or any other persons to determine the cause of the suspected abuse or neglect.

DCF or Law Enforcement Access to Students on School Premises

The building principal shall allow a student to be interviewed by DCF or law enforcement representatives on school premises to investigate suspected child abuse and shall act as appropriate to facilitate the agency's access to the child and to protect the student's interests during the process. State law grants the investigating agency the authority to determine whether a school employee may be present while the interview is being conducted, taking into account the child's best interests. If asked to sit in on the interview by the agency representative conducting it, the building principal or designee thereof shall oblige such request in order to provide comfort to the child throughout the process and to facilitate the investigation.

Cooperation Between School and Agencies

Principals shall work with DCF and law enforcement agencies to develop a plan of cooperation for investigating reports of suspected child abuse or neglect. To the extent that safety is not compromised, law enforcement officers investigating complaints of suspected child abuse or neglect on school property shall not be in uniform.

Reporting Procedure

The employee shall promptly report to the local DCF office or law enforcement if DCF is closed. It is recommended the building administrator also be notified after the report is made.

If the building principal has been notified, the principal shall immediately notify the superintendent that the initial report to DCF has been made. If appropriate, the principal may confer with the school's social worker, guidance counselor or psychologist. At no time shall the principal or any other staff member prevent or interfere with the making of a suspected child abuse report.

If available, the following information shall be given by the person making the initial report: name, address and age of the student; name and address of the parents or guardians; nature and extent of injuries or description of neglect or abuse; and any other information that might help establish the cause of the child's condition.

Any personal interview or physical inspection of the child by any school employee shall be conducted in an appropriate manner with an adult witness present.

State law provides that anyone making a report in good faith and without malice shall be immune from any civil liability that might otherwise be incurred or imposed.

Approved:

KASB Recommendation - 2/98; 4/07; 6/07; 11/10; 8/12; 10/12; 11/12

The board of education prohibits bullying in any form by any student, staff member, or parent towards a student or a staff member on or while using school property, in a school vehicle or at a school-sponsored activity or event. For the purposes of this policy, the term “bullying” shall have the meaning ascribed to it in Kansas law.

The administration shall propose, and the board shall review and approve a plan to address bullying as prohibited herein. The plan shall include provisions for the training and education of staff members.

Staff members who bully others in violation of this policy may be subject to disciplinary action, up to and including suspension and/or termination. If appropriate, staff members who violate the bullying prohibition shall be reported to local law enforcement.

Approved:

KASB Recommendation – 6/08; 6/13; 12/15; 10/17

GAAF Emergency Safety Interventions (See GAO, JRB, JQ, and KN)GAAF

The board of education is committed to limiting the use of Emergency Safety Intervention (“ESI”), such as seclusion and restraint, with all students. Seclusion and restraint shall be used only when a student's conduct necessitates the use of an emergency safety intervention as defined below. The board of education encourages all employees to utilize other behavioral management tools, including prevention techniques, de-escalation techniques, and positive behavioral intervention strategies.

This policy shall be made available on the district website with links to the policy available on any individual school pages. In addition, this policy shall be included in at least one of the following: each school’s code of conduct, school safety plan, or student handbook. Notice of the online availability of this policy shall be provided to parents during enrollment each year.

Definitions

“Campus police officer” means a school security officer designated by the board of education of any school district pursuant to K.S.A. 72-6146, and amendments thereto.

“Chemical Restraint” means the use of medication to control a student’s violent physical behavior or restrict a student’s freedom of movement.

“Emergency Safety Intervention” is the use of seclusion or physical restraint, but does not include physical escort or the use of time-out.

“Incident” means each occurrence of the use of an emergency safety intervention.

“Law enforcement officer” and “police officer” mean a full-time or part-time salaried officer or employee of the state, a county, or a city, whose duties include the prevention or detection of crime and the enforcement of criminal or traffic law of this state or any Kansas municipality. This term includes a campus police officer.

“Legitimate law enforcement purpose” means a goal within the lawful authority of an officer that is to be achieved through methods or conduct condoned by the officer’s appointing authority.

“Mechanical Restraint” means any device or object used to limit a student’s movement.

“Parent” means: (1) a natural parent; (2) an adoptive parent; (3) a person acting as a parent as defined in K.S.A. 72-3122(d)(2), and amendments thereto; (4) a legal guardian; (5) an education advocate for a student with an exceptionality; (6) a foster parent, unless the student is a child with an exceptionality; or (7) a student who has reached the age of majority or is an emancipated minor.

“Physical Escort” means the temporary touching or holding the hand, wrist, arm, shoulder, or back of a student who is acting out for the purpose of inducing the student to walk to a safe location.

“Physical Restraint” means bodily force used to substantially limit a student’s movement, except that consensual, solicited, or unintentional contact and contact to provide comfort, assistance, or instruction shall not be deemed to be physical restraint.

“School resource officer” means a law enforcement officer or police officer employed by a local law enforcement agency who is assigned to a district through an agreement between the local law enforcement agency and the district.

“School security officer” means a person who is employed by a board of education of any school district for the purpose of aiding and supplementing state and local law enforcement agencies in which the school district is located, but is not a law enforcement officer or police officer.

“Seclusion” means placement of a student in a location where all of the following conditions are met: (1) the student is placed in an enclosed area by school personnel; (2) the student is purposefully isolated from adults and peers; and (3) the student is prevented from leaving, or reasonably believes that he or she will be prevented from leaving the enclosed area.

“Time-out” means a behavioral intervention in which a student is temporarily removed from a learning activity without being secluded.

Prohibited Types of Restraint

All staff members are prohibited from engaging in the following actions with all students:

- Using face-down (prone) physical restraint;
- Using face-up (supine) physical restraint;
- Using physical restraint that obstructs the student’s airway;
- Using physical restraint that impacts a student’s primary mode of communication;

GAAF **Emergency Safety Interventions**

GAAF-4

- Using chemical restraint, except as prescribed treatments for a student’s medical or psychiatric condition by a person appropriately licensed to issue such treatments; and
- Use of mechanical restraint, *except*:
 - Protective or stabilizing devices required by law or used in accordance with an order from a person appropriately licensed to issue the order for the device;
 - Any device used by a certified law enforcement officer to carry out law enforcement duties; or
 - Seatbelts and other safety equipment when used to secure students during transportation.

Use of Emergency Safety Interventions

ESI shall be used only when a student presents a reasonable and immediate danger of physical harm to such student or others with the present ability to effect such physical harm. Less restrictive alternatives to ESI, such as positive behavior interventions support, shall be deemed inappropriate or ineffective under the circumstances by the school employee witnessing the student’s behavior prior to the use of any ESI. The use of ESI shall cease as soon as the immediate danger of physical harm ceases to exist. Violent action that is destructive of property may necessitate the use of an ESI. Use of an ESI for purposes of discipline, punishment, or for the convenience of a school employee shall not meet the standard of immediate danger of physical harm.

ESI Restrictions

GAAF Emergency Safety Interventions

GAAF-5

A student shall not be subjected to ESI if the student is known to have a medical condition that could put the student in mental or physical danger as a result of ESI. The existence of such medical condition must be indicated in a written statement from the student's licensed health care provider, a copy of which has been provided to the school and placed in the student's file.

Such written statement shall include an explanation of the student's diagnosis, a list of any reasons why ESI would put the student in mental or physical danger, and any suggested alternatives to ESI. Notwithstanding the provisions of this subsection, a student may be subjected to ESI, if not subjecting the student to ESI would result in significant physical harm to the student or others.

Use of Seclusion

When a student is placed in seclusion, a school employee shall be able to see and hear the student at all times.

All seclusion rooms equipped with a locking door shall be designed to ensure that the lock automatically disengages when the school employee viewing the student walks away from the seclusion room, or in case of emergency, such as fire or severe weather.

A seclusion room shall be a safe place with proportional and similar characteristics as other rooms where students frequent. Such room shall be free of any condition that could be a danger to the student, well-ventilated, and sufficiently lighted.

Training

All staff members shall be trained regarding the use of positive behavioral intervention strategies, de-escalation techniques, and prevention techniques. Such training shall be consistent with nationally recognized training programs on ESI. The intensity of the training provided will depend upon the employee's position. Administrators, licensed staff members, and other staff deemed most likely to need to restrain a student will be provided more intense training than staff who do not work directly with students in the classroom. District and building administration shall make the determination of the intensity of training required by each position.

Each school building shall maintain written or electronic documentation regarding the training that was provided and a list of participants, which shall be made available for inspection by the state board of education upon request.

Notification and Documentation

The principal or designee shall notify the parent the same day as an incident. The same-day notification requirement of this subsection shall be deemed satisfied if the school attempts at least two methods of contacting the parent. A parent may designate a preferred method of contact to receive the same-day notification. Also, a parent may agree, in writing, to receive only one same-day notification from the school for multiple incidents occurring on the same day.

Documentation of the ESI used shall be completed and provided to the student's parents no later than the school day following the day of the incident. Such written documentation shall include: (A) The events leading up to the incident; (B) student behaviors that necessitated the ESI; (C) steps taken to

transition the student back into the educational setting; (D) the date and time the incident occurred, the type of ESI used, the duration of the ESI, and the school personnel who used or supervised the ESI; (E) space or an additional form for parents to provide feedback or comments to the school regarding the incident; (F) a statement that invites and strongly encourages parents to schedule a meeting to discuss the incident and how to prevent future incidents; and (G) email and phone information for the parent to contact the school to schedule the ESI meeting. Schools may group incidents together when documenting the items in subparagraphs (A), (B) and (C) if the triggering issue necessitating the ESIs is the same.

The parent shall be provided the following information after the first and each subsequent incident during each school year: (1) a copy of this policy which indicates when ESI can be used; (2) a flyer on the parent's rights; (3) information on the parent's right to file a complaint through the local dispute resolution process (which is set forth in this policy) and the complaint process of the state board of education; and (4) information that will assist the parent in navigating the complaint process, including contact information for Families Together and the Disability Rights Center of Kansas. Upon the first occurrence of an incident of ESI, the foregoing information shall be provided in printed form or, upon the parent's written request, by email. Upon the occurrence of a second or subsequent incident, the parent shall be provided with a full and direct website address containing such information.

Law Enforcement, School Resource, and Campus Security Officers

Campus police officers and school resource officers shall be exempt from the requirements of this policy when engaged in an activity that has a legitimate law enforcement purpose. School security officers shall not be exempt from the requirements of this policy.

If a school is aware that a law enforcement officer or school resource officer has used seclusion, physical restraint, or mechanical restraint on a student, the school shall notify the parent the same day using the parent's preferred method of contact. A school shall not be required to provide written documentation to a parent, as set forth above, regarding law enforcement use of an emergency safety intervention, or report to the state department of education any law enforcement use of an emergency safety intervention. For purposes of this subsection, mechanical restraint includes, but is not limited to, the use of handcuffs.

Documentation of ESI Incidents

Except as specified above with regard to law enforcement or school resource officer use of emergency safety interventions, each building shall maintain documentation any time ESI is used with a student. The documentation shall include all of the following:

- Date and time of the ESI,
- Type of ESI,
- Length of time the ESI was used,
- School personnel who participated in or supervised the ESI,
- Whether the student had an individualized education program at the time of the incident,

- Whether the student had a section 504 plan at the time of the incident, and
- Whether the student had a behavior intervention plan at the time of the incident.

All such documentation shall be provided to the building principal, who shall be responsible for providing copies of such documentation to the superintendent or the superintendent's designee on at least a biannual basis. At least once per school year, each building principal or designee shall review the documentation of ESI incidents with appropriate staff members to consider the appropriateness of the use of ESI in those instances.

Reporting Data

District administration shall report ESI data to the state department of education as required.

Parent Right to Meeting on ESI Use

After each incident, a parent may request a meeting with the school to discuss and debrief the incident. A parent may request such meeting verbally, in writing, or by electronic means. A school shall hold a meeting requested under this subsection within 10 school days of the parent's request. The focus of any such meeting shall be to discuss proactive ways to prevent the need for emergency safety interventions and to reduce incidents in the future.

For a student with an IEP or a Section 504 plan, such student's IEP team or Section 504 plan team shall discuss the incident and consider the need to conduct a functional behavioral assessment, develop a behavior intervention plan, or amend the behavior intervention plan if already in existence.

For a student with a section 504 plan, such student's section 504 plan team shall discuss and consider the need for a special education evaluation. For students who have an individualized education program and are placed in a private school by a parent, a meeting called under this subsection shall include the parent and the private school, who shall consider whether the parent should request an individualized education program team meeting. If the parent requests an individualized education program team meeting, the private school shall help facilitate such meeting.

For a student without an IEP or Section 504 plan, the school staff and the parent shall discuss the incident and consider the appropriateness of a referral for a special education evaluation, the need for a functional behavioral assessment, or the need for a behavior intervention plan. Any such meeting shall include the student's parent, a school administrator for the school the student attends, one of the student's teachers, a school employee involved in the incident, and any other school employees designated by the school administrator as appropriate for such meeting.

The student who is the subject of such meetings shall be invited to attend the meeting at the discretion of the parent. The time for calling such a meeting may be extended beyond the 10-day limit if the parent of the student is unable to attend within that time period. Nothing in this section shall be construed to prohibit the development and implementation of a functional behavior assessment or a behavior intervention plan for any student if such student would benefit from such measures.

Local Dispute Resolution Process

If a parent believes that an emergency safety intervention has been used on the parent's child in violation of state law or board policy, the parent may file a complaint as specified below.

The board of education encourages parents to attempt to resolve issues relating to the use of ESI informally with the building principal and/or the superintendent before filing a formal complaint with the board. Once an informal complaint is received, the administrator handling such complaint shall investigate such matter, as deemed appropriate by the administrator. In the event that the complaint is resolved informally, the administrator must provide a written report of the informal resolution to the superintendent and the parents and retain a copy of the report at the school. The superintendent will share the informal resolution with the board of education and provide a copy to the state department of education.

If the issues are not resolved informally with the building principal and/or the superintendent, the parents may submit a formal written complaint to the board of education by providing a copy of the complaint to the clerk of the board and the superintendent within thirty (30) days after the parent is informed of the incident.

Upon receipt of a formal written complaint, the board president shall assign an investigator to review the complaint and report findings to the board as a whole. Such investigator may be a board member, a school administrator selected by the board, or a board attorney. Such investigator shall be informed of the obligation to maintain confidentiality of student records and shall report

the findings of fact and recommended corrective action, if any, to the board in executive session.

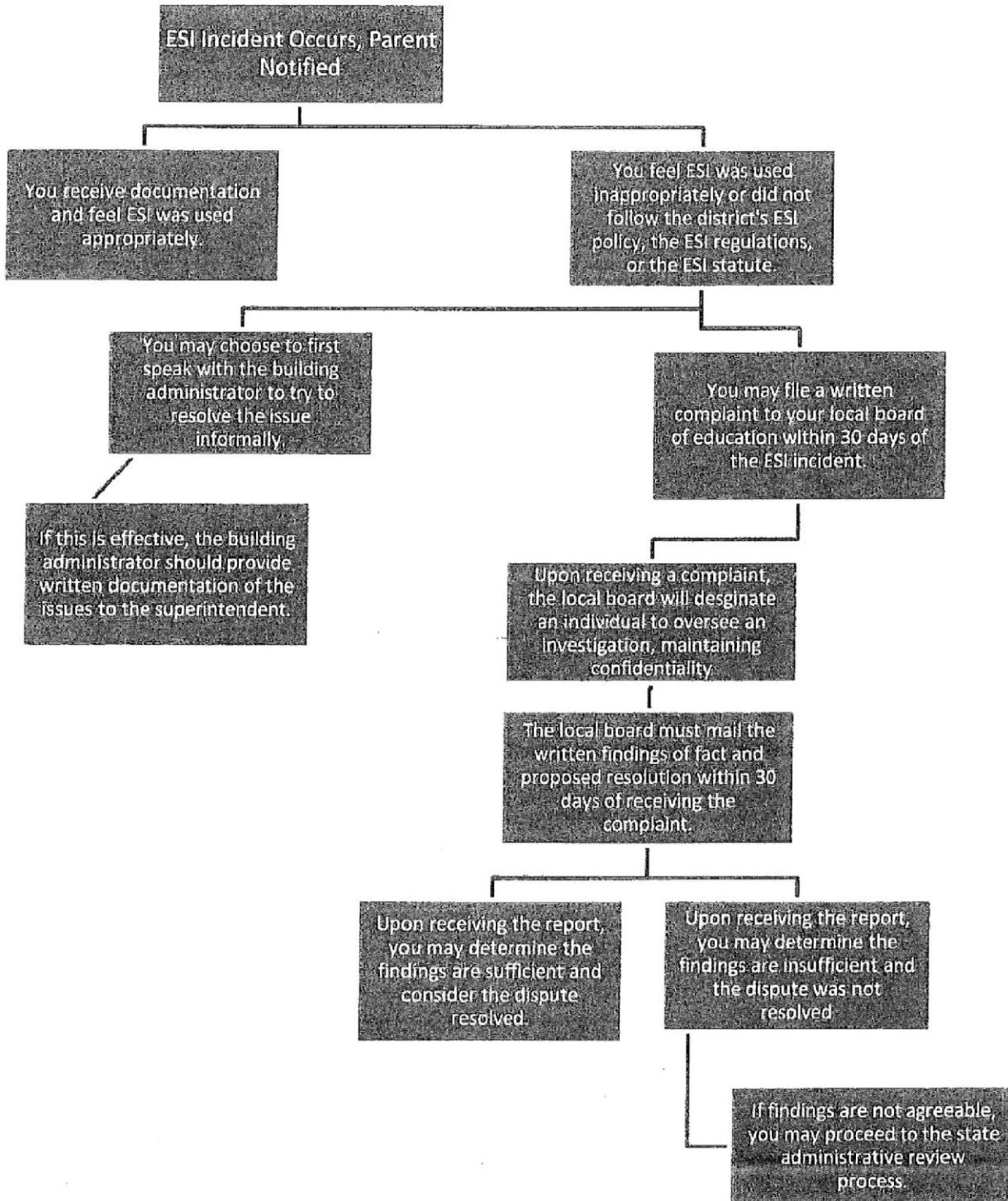
Any such investigation must be completed within thirty (30) days of receipt of the formal written complaint by the board clerk and superintendent. On or before the 30th day after receipt of the written complaint, the board shall adopt written findings of fact and, if necessary, appropriate corrective action. A copy of the written findings of fact and any corrective action adopted by the board shall only be provided to the parents, the school, and the state department of education and shall be mailed to the parents and the state department within 30 days of the board's receipt of the formal complaint.

If desired, a parent may file a complaint under the state board of education administrative review process within thirty (30) days from the date a final decision is issued pursuant to the local dispute resolution process.

Approved:

KASB Recommendation – 6/13; 12/13; 6/15; 6/16; 6/18; 12/18

Local Dispute Resolution Guide for Parents



GACA Positions (See CD and GACB)

GACA

New employment positions shall be authorized by the board. The superintendent shall prepare for board approval a comprehensive list of all new positions, together with their qualifications, duties, and responsibilities, for board consideration.

Approved:

KASB Recommendation - 2/98; 4/07; 12/18

The superintendent shall develop a job description for each category of employee. After board approval of any new or revised job descriptions, they will be deemed in effect, shall be filed with the clerk, and may be published in handbooks.

Approved:

KASB Recommendation - 2/98; 4/07 ; 6/19

Recruitment

The board delegates recruiting authority to the superintendent. In carrying out this responsibility, the superintendent may involve administrators and other employees.

Hiring

The board shall approve the hiring of all employees. No staff member's employment is official until the contract or other document is signed by the candidate and approved by the board.

Hiring sequence

- Conditional offer of employment is extended to the candidate in writing subject to revocation or, if provisional employment has already begun, termination of employment based upon unsatisfactory results of any reference and/or background checks performed;
- Written acceptance by the candidate is received;
- Contract or other appropriate document sent to the candidate and candidate's acceptance signified by a signed document returned to the superintendent; and
- Approval of the contract or other documents by the board.

Approved:

KASB Recommendation – 2/98; 6/00; 6/01; 4/07; 6/14 ; 6/19

GACCA Nepotism

GACCA

The superintendent shall make reasonable efforts to determine whether a candidate for employment is related to or residing with a board member or an administrator of the district. If a candidate is related to or residing with a board member or administrator, the superintendent will make this fact known to the board.

Except in an emergency or in the case the individual is deemed to be the most qualified candidate for the position by the board, the board will not employ anyone who is the father, mother, brother, sister, spouse, son, daughter, step-son, step-daughter, son-in-law, or daughter-in-law of any board member or who resides in the household of any board member.

This provision shall not apply to any person who has been regularly employed by the board prior to the adoption of this policy or to any person who has been regularly employed by the board prior to the election or appointment of a new board member to whom the person is related.

Supervision Limitations

No employee shall directly supervise or be responsible for any portion of the evaluation of his or her father, mother, brother, sister, spouse, son, daughter, step-son, step-daughter, son-in-law, or daughter-in-law or an individual residing with the employee.

Approved:

KASB Recommendation - 2/98; 6/07; 4/13 ; 6/19

All district employees, at the time of employment, shall provide verification of identity and employment status to the superintendent.

The superintendent shall maintain a file on all of the district's employees hired after November 6, 1986, proving that each employee has verified their identity, employment status, U.S. citizenship, or legal alien status.

For additional information see:

<http://www.uscis.gov/files/nativedocuments/m-274.pdf>

Approved:

KASB Recommendation - 2/98; 4/07; 6/08

GACE Assignment and Transfer

GACE

The board reserves the right to assign, reassign or transfer all employees, unless otherwise provided in the negotiated agreement.

The board may delegate its authority to assign, reassign, or transfer any or all employees to the superintendent.

Approved:

KASB Recommendation - 2/98; 4/07 ; 6/19

GAD Employee Development Opportunities

GAD

Except as may be specified in the negotiated agreement concerning staff members covered thereby, all plans for self-improvement involving expenditure of district funds, or which require time away from the employee's assigned responsibilities shall be approved in advance by the board.

Approved:

KASB Recommendation - 2/98; 4/07; 12/14; 6/18

GAE **Complaints**

GAE

Any employee may file a complaint with their supervisor concerning a school rule, regulation, policy or decision that affects the employee. The complaint shall be in writing, filed within ten (10) days following the event complained of and shall specify the basis of the complaint. The supervisor shall meet with the employee and provide a written response within ten (10) days. If the employee disagrees with the decision, the employee may appeal to the superintendent. The superintendent's decision shall be final. Employees covered by the negotiated agreement shall follow procedures outlined in that document.

Approved:

KASB Recommendation - 2/98; 4/07; 6/19

GAF

Staff-Student Relations

GAF

(See GAAC, GAACA JGEC, JGECA and KN)

Staff members shall maintain professional relationships with students, which are conducive to an effective educational environment. Staff members shall not submit students to bullying, harassment, or discrimination prohibited by board policy. Staff members shall not have any interaction of a romantic and/or sexual nature with any student at any time regardless of the student's age or consent.

Approved:

KASB Recommendation – 2/98; 7/03; 4/07; 6/07; 6/16; 10/17

GAG **Conflict of Interest**

GAG

District employees are prohibited from engaging in any activity which may conflict with or detract from the effective performance of their duties. No employee will attempt, during the school day or on school property, to sell or endeavor to influence any student or school employee to buy any product, article, instrument, service, or other items which may directly or indirectly benefit the school employee. No school employee will enter into a contract for remuneration with the district other than a contract for employment unless the contract is awarded on the basis of competitive bidding.

Approved:

KASB Recommendation - 2/98; 4/07 ; 6/19

GAH

Participation in Community Activities

GAH

Prior permission must be obtained from the superintendent for participation in any non-school community activity which takes place during duty hours.

Approved:

KASB Recommendation - 2/98; 4/07

Holding Public Office

Staff members elected or appointed to a public office which restricts the employee's ability to complete contractual obligations may be required to take unpaid leave for a period of time determined by the board or may be terminated.

Staff members holding a public office, which in the judgment of the board is less than full-time, shall request unpaid leave from the superintendent at least one week in advance.

An employee who must be absent from school to carry out the duties of a public office must take a leave of absence without pay for the duration of the public office.

Political Activity in the Schools

Staff members shall not use school time, school property, or school equipment for the purpose of furthering the interests of any political party, the campaign of any political candidate, or the advocacy of any political issue.

For the purpose of this policy, "advocacy of any political issue" shall not be deemed to include providing information on educational matters to elected officials.

Approved:

KASB Recommendation - 2/98; 4/07; 6/15; 10/17 ; 6/19

GAI **Solicitations** (See KDC)

GAI

All solicitations of and by staff members during duty hours are prohibited without prior approval of the appropriate supervisor.

Approved:

KASB Recommendation - 2/98; 4/07

GAJ **Gifts** (See JL and KH)

GAJ

The giving of gifts between students and staff members is discouraged. Unless approved by the principal, staff members shall not give gifts to any student or class of students when the gifts arise out of a school situation, class or school-sponsored activity.

Gifts to Staff Members

Staff members are prohibited from receiving gifts from vendors, salesmen or other such representatives. Premiums resulting from sales projects sponsored by the school shall become the property of the school.

Approved:

KASB Recommendation - 2/98; 4/07

Personnel files required by the district shall be confidential and in the custody of the records custodian and/or the superintendent. Employees have the right to inspect their files upon proper notice under the supervision of an appropriate supervisor. All records and files maintained by the district should be screened periodically by the custodian of records.

All personnel files and evaluation documents, including those stored by electronic means, shall be adequately secured.

Requests for References

Unless otherwise provided by law, a request by a third party for release of any personnel record shall require the written consent of the employee, and shall be submitted to the records custodian who shall respond to the request as the law allows.

Upon receipt of a written request district officials may provide information regarding past and present employees to prospective employers in compliance with current law. Information that may be provided will include:

- employment date(s);
- job description and duties while in the district's employ;
- last salary or wage;
- wage history;
- whether the employee was voluntarily or involuntarily released from service and the reasons for the separation;
- written employee evaluations which were conducted prior to the employee's separation from the employer and to which an employee shall be given a copy upon request.

Immunity Provided

Unless otherwise provided by law, an employer who responds in writing to a written request concerning a current or former employee from a prospective employer of that employee shall be absolutely

immune from civil liability for disclosure of the information noted above to which an employee may have access.

Prohibition on Aiding and Abetting Sexual Abuse

Pursuant to the federal Every Student Succeeds Act, the board prohibits the board, individual board members, and any individual or entity who is a district employee, contractor, or agent from assisting a district employee, contractor, or agent in obtaining a new job if the board, individual, or entity knows, or has probable cause to believe, that such school employee, contractor, or agent engaged in sexual misconduct regarding a minor or student in violation of the law. For the purposes of this policy, it shall not be deemed assisting in obtaining a new job if the aforementioned individuals or entities participate in the routine transmission of administrative and personnel files in accordance with law and this policy.

Approved:

KASB Recommendation – 7/02; 4/07; 12/16; 10/17

The district shall comply with the salary basis requirements of the Fair Labor Standards Act (FLSA). The board prohibits all managers from making any improper deductions from the salaries of exempt employees. Employees shall be made aware of this policy.

If an employee believes that an improper deduction has been made to his or her salary, the employee should immediately report this information to his or her direct supervisor or the superintendent.

Reports of improper deductions shall be promptly investigated. If it is determined that an improper deduction has occurred, the employee shall be promptly reimbursed for any improper deduction made.

Approved:

KASB Recommendation – 11/04; 4/07; 12/14

GAM Personal Appearance

GAM

Appropriate dress and personal appearance is essential for all district employees.

Approved:

KASB Recommendation - 2/98; 4/07

GAN Travel Expenses (See BBBF, CG, CEF, GBRC and GCA)

GAN

The board shall provide reimbursement for expenses incurred in travel related to the duties of the district's employees when approved in advance by the superintendent. Mode of travel will be based on, but not limited to, the availability of transportation, distance, and number of persons traveling together. A first class air fare will be reimbursed only when coach space is not available.

Requests for reimbursement shall have the following attached: receipts for transportation, parking, hotels or motels, meals and other expenses for which receipts are ordinarily available. For the authorized use of a personal car, including approved travel between buildings, staff members shall be reimbursed at the state mileage rate. Individuals with approved mileage expenses will be responsible for submitting their claim to the central office for payment in accordance with the schedule developed by central office staff.

Approved:

KASB Recommendation - 2/98; 7/03; 4/07; 12/14

Non-administrative staff use of a district credit card, if authorized by the staff member's immediate supervisor, shall be confined to necessary school business and shall be subject to any guidelines for such use established by the board or district administration. Unless otherwise specified in guidelines established pursuant to this policy, staff members shall retain any receipt(s) for district credit card expenditure(s) and shall provide them to the staff member's immediate supervisor as soon as practicable following the expenditure.

The superintendent may designate administrative and other staff members to whom a district credit card will be issued. The board shall annually prescribe limits and restrictions on the use of district credit cards and shall monitor monthly receipts and reimbursement expenses. In no case will credit card expenditures in excess of \$5,000 in one month be authorized for any non-administrative staff member without the prior approval of the superintendent.

All rewards points or cash back payments earned using district credit cards are district property and shall be either applied to future district credit card purchases or remitted to the district treasurer for accounting and deposit.

Accountings of district credit card use shall be provided to the board for review on a monthly basis, and a record of district credit card usage shall be maintained. Expenses for district travel in personal vehicles or extended travel incurred in the performance of official duties shall be reimbursed in accordance with the provisions of GAN.

Approved:

KASB Recommendation - 6/13; 6/15; 10/17

Each employee is responsible for maintaining proper control in the school. Unless otherwise specified in board policy, an employee may use reasonable force necessary to ward off an attack, to protect a student or another person, or to quell a disturbance which threatens physical injury to others.

Approved:

KASB Recommendation - 2/98; 4/07; 12/13

Maintaining a drug free work place is important in establishing an appropriate learning environment for the students of the district. Unless otherwise specified in this policy, the unlawful manufacture, distribution, sale, dispensation, possession, or use of a controlled substance is prohibited at school, on or in school district property; and at school sponsored activities, programs, and events. Possession and/or use of a controlled substance by an employee for the purposes of this policy shall only be permitted if such substance was obtained directly, or pursuant to a valid prescription or order issued thereto, from a person licensed by the state to dispense, prescribe, or administer controlled substances and any use is in accordance with label directions.

As a condition of employment in the district, employees shall abide by the terms of this policy.

Employees shall not unlawfully manufacture, distribute, dispense, possess, and/or use controlled substances in the workplace.

Any employee who is convicted under a criminal drug statute for a violation occurring at the workplace must notify the superintendent of the conviction within five days after the conviction. The superintendent shall then ensure that notice of such conviction is given to any granting agency within 10 days of receiving notice thereof.

Within 30 days after the notice of conviction is received, the school district will take appropriate action with the employee. Such action may include, suspension, placement on probationary status, or other disciplinary action including termination. Alternatively, or in addition to any action short of termination, the employee may be required to participate satisfactorily in an approved drug abuse assistance or rehabilitation program as a condition of continued employment. The employee shall bear the cost of participation in such program. Each employee in the district shall be given a copy of this policy.

This policy is intended to implement the requirements of the federal regulations promulgated under the Drug Free Workplace Act of 1988. It is not intended to supplant or otherwise diminish disciplinary actions which may be taken under board policies or the negotiated agreement.

Maintaining a drug free workplace is important in establishing an appropriate learning environment for the students of the district. The unlawful manufacture, distribution, dispensation, possession, or use of a controlled substance is prohibited in the district.

Approved:

KASB Recommendation - 9/97; 2/98; 4/07; 6/12; 12/13; 10/17

The possession, use, sale, distribution, or being under the influence of controlled substances and/or alcohol by school employees at school; on, in, or while utilizing school property; or at school sponsored activities, programs, or events is prohibited.

Employee Conduct

As a condition of continued employment in the district, all employees shall abide by the terms of this policy. Employees shall not manufacture, distribute, dispense, possess, use, and/or be under the influence of illicit drugs, controlled substances, and/or alcoholic beverages at school; on, in, or while utilizing school property; or at school sponsored activities, programs, or events.

Possession, use, and/or being under the influence of a controlled substance by an employee for the purposes of this policy shall only be permitted if such substance was:

1. Obtained directly from, or pursuant to a valid prescription or order, issued to such employee from a person licensed by the state to dispense, prescribe, or administer controlled substances; and
2. Used, if at all, in accordance with label directions.

Compliance with the terms of this policy is mandatory. Employees who are found violating the terms of this policy will be reported to the appropriate law enforcement officers. Additionally, an employee who violates the terms of this policy may be subject to any or all of the following sanctions:

1. Short term suspension with pay;
2. Short term suspension without pay;
3. Long term suspension without pay;
4. Required participation in a drug and alcohol education, treatment, counseling, or rehabilitation program;
5. Termination or nonrenewal of employment relationship.

Prior to applying sanctions under this policy, employees will be afforded any due process rights to which they are entitled under their contracts or the provisions of Kansas law. Nothing in this policy is

intended to diminish the right of the district to take any other disciplinary action. This policy is not intended to change any right, duty, or responsibilities in the current negotiated agreement.

If it is agreed that an employee shall enter into and complete a drug education or rehabilitation program, the cost of such program will be borne by the employee. A list of area drug and alcohol counseling and rehabilitation programs, along with names and addresses of contact persons for the programs, is on file with the board clerk.

Employees are responsible for contacting the directors of the programs to determine the cost and length of the program and for enrolling in the programs. If participation in such a program is required as a condition of continued employment, copies of any documentation related to enrollment in and attendance in such program shall be made available to the board and/or administration upon request.

A copy of this policy shall be provided to all employees.

Approved:

KASB Recommendation – 9/97; 2/98; 4/07; 6/08; 6/12; 12/13

GAOC Use of Tobacco Products and Nicotine Delivery Devices
(See JCDA)

GAOC

The use of tobacco products in any form and/or of any nicotine delivery device is prohibited for staff members in any district facility; in school vehicles; at school-sponsored, activities, programs, or events; and on school owned or operated property.

The following definitions apply to this policy.

“Nicotine delivery device” means any device that can be used to deliver nicotine or nicotine salts to the person inhaling from the device. Such definition shall include, but may not be limited to, any electronic cigarette, cigar, cigarillo, pipe, or personal vaporizer.

“Tobacco product” means any product that is made from or derived from tobacco, or that contains nicotine, that is intended for human consumption or is likely to be consumed, whether smoked, heated, chewed, absorbed, dissolved, inhaled or ingested by any other means, including, but not limited to, a cigarette, a cigar, pipe tobacco, chewing tobacco, snuff, or snus.

“Tobacco product” also means any component or accessory used in the consumption of a tobacco product, such as filters, rolling papers, pipes, and substances used in electronic cigarettes, whether or not they contain nicotine.

Approved:

KASB Recommendation - 2/98; 4/07; 6/13; 6/16; 12/18

GAOD Drug and Alcohol Testing

GAOD

All district employees performing job functions which require the employee to maintain a commercial driver's license shall be tested for alcohol and drugs as required by current federal law. Board approved rules and regulations necessary to implement the testing program shall be on file with the clerk.

Each new employee who is required to undergo alcohol and drug testing shall be given a copy of the appropriate district regulations.

Each new employee shall be informed that compliance with the required elements of the testing program is a condition of employment as a driver in the district. All employees shall be informed of this policy on an annual basis.

Approved:

KASB Recommendation - 7/96; 2/98; 4/07

The district will participate in workers compensation as required by current statute. The combined workers compensation benefits and salary received under allowed paid leave shall not exceed one full day's pay.

All employees of the district shall be covered by workers compensation. Workers compensation coverage is provided for all employees regardless of assignment, length of assignment, and/or hours worked per day. Benefits are for personal injury from accident or industrial diseases arising out of and in the course of employment in the district.

An injured employee must notify the designated employer's workers compensation coordinator or, if the coordinator is unavailable, his or her supervisor within 20 days of the injury or within 20 days of repetitive trauma in order to be eligible for benefits.

The workers compensation plan will provide coverage for medical expenses and wages to the extent required by statute to those employees who qualify; however, the amount of workers compensation benefits and paid leave benefits shall not exceed a regular daily rate of pay. An employee using paid leave in combination with workers compensation will be charged for one full or partial day of paid leave, as provided for in the applicable leave policy or the negotiated agreement, for each day of absence until the employee's paid leave is exhausted.

Any employee who is off work and receiving workers compensation benefits shall be required to provide the designated workers compensation coordinator with a written doctor's release before the employee is allowed to return to work. In addition, should the employee be released to return to work by a doctor and fail to do so, all benefits under paid leave shall terminate, and those benefits under workers compensation shall be restricted as provided by current statute.

Whenever an employee is absent from work and is receiving workers compensation benefits due to a work-related injury or is receiving district paid disability insurance, the employee may use available paid leave to supplement the workers compensation or district paid disability insurance payments.

Workers compensation benefits and FMLA benefits provided in a board approved plan shall run concurrently if both are applicable.

In no event shall the employee be entitled to a combination of workers compensation benefits, district paid disability insurance, and salary in excess of his/her full salary. Available paid leave may be used for this purpose until 1) available paid leave benefits are exhausted; 2) the employee returns to work; 3) the employee is released by the medical provider and position is offered by the employer, but the employee declines to return to work; or 4) employment is terminated. Paid leave shall be calculated on a prorata amount equal to the percentage of salary paid by the district.

Testing

The board, through its designated workers compensation coordinator, may require employees who claim or are involved in an accident in the course of employment to submit to a post-injury chemical test. This includes instances where the district administration or workers compensation coordinator has actual knowledge of an accident whether the employee has or has not requested medical treatment. If an employee refuses to submit to an employer requested post-injury chemical test, the employee forfeits all related workers compensation benefits as provided in K.S.A. 44-501(b)(1)(E). Chemical test collection, labeling, and performance shall meet the requirements found in K.S.A. 44-501(b)(3).

Choice of Physician

The board shall have the right to choose a designated health care provided to provide medical assistance to any employee who suffers an injury while performing their job. However, if the injured employee chooses to go to a medical provider other than the designated provider, the recovery for such expenses shall be limited to \$500.00

Approved:

KASB Recommendation—7/96; 2/98; 7/02; 4/07; 6/09; 12/14; 6/15; 10/17; 6/19

Salary deductions shall be made if permitted by board policy, the negotiated agreement, or as required or authorized by law. The district shall comply with the salary basis requirements of the Fair Labor Standards Act (FLSA.)

The superintendent shall develop forms to provide information needed to make approved salary deductions. All requests for salary deductions shall be submitted to the superintendent during enrollment periods established by the board.

Approved:

KASB Recommendation - 2/98; 11/04; 4/07; 6/13

Whenever an employee has been diagnosed by a physician as having a communicable disease as defined in current regulation, the employee shall report the diagnosis and nature of the disease to the superintendent or the superintendent's designee so that a proper reporting may be made to the county or joint board of health as required by current law.

An employee afflicted with a communicable disease dangerous to the public health shall be suspended from duty for the duration of the contagiousness in order to give maximum health protection to other school employees and to students.

The employee shall be allowed to return to duty upon recovery from the illness, or when the employee is no longer contagious as authorized by the employee's physician.

The board reserves the right to require a written statement from the employee's physician indicating that the employee is free from all symptoms of the communicable disease.

If a school employee has been diagnosed as having a communicable disease and the superintendent has been notified by the employee, the superintendent or the superintendent's designee shall determine whether a release shall be obtained from the employee's physician before the employee returns to duty.

Decisions regarding the type of employment setting for an employee with a communicable disease shall be made by the superintendent or the superintendent's designee based upon consideration of the physical condition of the employee and the following factors:

- the nature of the risk;
- the duration of the risk;
- the severity of the risk; and
- the probability that the disease will be transmitted or cause harm to the employee or to others who will share the same setting.

No information regarding employees with communicable diseases shall be released by school personnel without the employee's consent except to comply with state or federal law.

Additional Certifications of Health

If at any time the board has reason to believe that an employee is suffering from an illness detrimental to the health of pupils, the board reserves the right to require such employee to provide the

board with a new certificate of health in order to protect the health, safety, and welfare of the school's students.

Approved:

KASB Recommendation – 2/98; 6/01; 4/07; 10/12; 1/13

GARA Bloodborne Pathogen Exposure Control Plan

GARA

The board shall adopt an exposure control plan. The plan shall be accessible to all employees and shall be reviewed and updated at least annually. All staff shall receive the training and equipment necessary to implement the plan.

Approved:

KASB Recommendation - 9/97; 4/07; 12/14

GARI Family and Medical Leave

GARI

Eligible district employees shall be provided family and medical leave as provided by a plan approved by the board. The plan for providing leave under this policy shall be filed with the clerk of the board and made available to all staff at the beginning of each school year.

Approved:

KASB Recommendation - 9/97; 2/98; 4/07; 6/08; 6/09

Employees are entitled to military leave under the Uniformed Services Employment and Reemployment Rights Act of 1994. The Act applies to military service that began on or after December 12, 1994 or military service that began before December 12, 1994 if the employee was a reservist or National Guard member who provided notice to the employer before leaving work.

Reemployment rights extend to persons who have been absent from work because of “service in the uniformed services.” The uniformed services consist of the following military branches:

- Army, Navy, Marine Corps, Air Force or Coast Guard.
- Army Reserve, Navy Reserve, Marine Corps Reserve, Air Force Reserve or Coast Guard Reserve.
- Army National Guard or Air National Guard.
- Commissioned corps of the Public Health Service.
- Any other category of persons designated by the President in time of war or emergency.

“Service” in the uniformed services means duty on a voluntary or involuntary basis in a uniformed service, including:

- Active duty.
- Active duty for training.
- Initial active duty for training. Inactive duty training.
- Full-time National Guard duty.
- Absence from work for an examination to determine a person’s fitness for any of the above types of duty.

The employee may be absent for up to five (5) years for military duty and retain reemployment rights. There are, however, exceptions which can exceed the five (5) year limit. Reemployment protection does not depend on the timing, frequency, duration or nature of an individual’s service. The law enhances protections for disabled veterans including a requirement to provide reasonable accommodations and up to two (2) years to return to work if convalescing from injuries received during service or training.

The returning employee is entitled to be reemployed in the job that they would have attained had they not been absent for military service, with the same seniority, status and pay, as well as other rights and benefits determined by law. If necessary, the employer must provide training or retraining that enables the employee to refresh or upgrade their skills so they can qualify for reemployment. While the individual is

performing military service, he or she is deemed to be on a furlough or leave of absence and is entitled to the non-seniority rights accorded other individuals on non-military leaves of absence. Individuals performing military duty of more than 30 days may elect to continue employer sponsored health care for up to 18 months at a cost of up to 102 percent of the full premium. For military service of less than 31 days, health care coverage is provided as if the individual had never left. All pensions which are a reward for length of service are protected.

Individuals must provide advance written or verbal notice to their employers for all military duty. Notice may be provided by the employee or by the branch of the military in which the individual will be serving.

Notice is not required if military necessity prevents the giving of notice; or, if the giving of notice is otherwise impossible or unreasonable.

Accrued vacation or annual leave may be used (but is not required) while performing military duty. The individual's timeframe for returning to work is based upon the time spent on military duty.

**TIME SPENT ON
MILITARY DUTY**

**RETURN TO WORK OR APPLICATION FOR
REEMPLOYMENT**

Less than 31 days:

Must return at the beginning of the next regularly scheduled work period on the first full day after release from service, taking into account safe travel home plus an eight (8) hour rest period.

More than 30 but less than 181 days:

Must submit an application for reemployment within 14 days of release from service.

More than 180 days:

Must submit an application for reemployment within 90 days of release from service.

The individual's separation from service must be under honorable conditions in order for the person to be entitled to reemployment rights. Documentation showing eligibility for reemployment can be

required. The employer has the right to request that an individual who is absent for a period of service of 31 days or more provide documentation showing:

- the application for reemployment is timely;
- the five-year service limitation has not been exceeded; and
- separation from service was under honorable conditions.

If documentation is not readily available or does not exist, the individual must be reemployed. However, if after reemploying the individual, documentation becomes available that shows one or more reemployment requirements were not met, the employer may terminate the individual, effective immediately. The termination does not operate retroactively.

Questions should be directed to Veterans' Employment and Training Service, U.S. Department of Labor.

Kansas law also requires reemployment if an individual is called to active duty by the state.

Approved:

KASB Recommendation 9/97; 4/07; 6/08; 6/09; 6/10

All employees, certified and non-certified, who are working at least half time are required to be a member of the district's group health plan. Staff who can prove group coverage elsewhere, are not required to join in the district's health plan.

Approved:

KASB Recommendation - 12/14

The board encourages district employees to use technology, including communication devices, to improve efficiency and safety. The district expects all employees to use communication devices in a responsible manner that does not interfere with the employee's job duties. Employees who violate district policies and procedures governing the use of communication devices may be disciplined, up to and including termination, and may be prohibited from possessing or using communication devices while at work. Communication devices may not be used in any manner that would violate the district's policy on student-staff relations.

Definitions

“Communication device” is defined to include all portable devices that send or receive calls or text messages, allow the retrieval of email, or provide access to the Internet. Communication devices shall include, but may not be limited to cell phones, smart phones, iPads, and tablets.

“Use/Using” for the purposes of this policy mean answering or talking on the phone; sending or responding to a text, e-mail, or other communication; opening and viewing pictures or digital recordings; opening and listening to music or audio communications; accessing social media websites; playing games on such device; continuously checking a communication device; or any activity with a communication device that interferes with the employee’s job duties or appropriate supervision of students.

General Use

The district prohibits employees from using any communication device that interrupts or disrupts the performance of duties by the employee or otherwise interferes with district operations, as determined by the employee's supervisor. This prohibition applies regardless of whether the communication device used is owned by the employee or provided by the district. Employees are responsible for keeping communication devices secure and, if possible, password protected.

Supervision of students and the provision of academic instruction are priorities in the district, and employees who are responsible for supervising and/or providing academic instruction to students must concentrate on these tasks at all times. Employees shall not use communication devices when they are

responsible for supervising students or when their doing so interrupts or interferes with classroom instruction unless any of the following conditions occurs:

- The device is being used to instruct the students being supervised at the time;
- The use is necessary to the performance of an employment-related duty;
- The employee has received specific and direct permission from a supervisor to do so; or
- There is an emergency.

Even when these conditions exist, the employee is responsible for obtaining assistance in adequately supervising students during the approved use so that students are supervised at all times.

Use in Vehicles

Regardless of other provisions of this policy, unless there is an emergency, employees shall not use communication devices when:

- Driving district-provided vehicles;
- Operating a vehicle in which a student is being transported when the transportation is provided as part of the employee's job; or
- Supervising students who are entering or exiting a vehicle, crossing thoroughfares, or are otherwise attempting to safely reach their destinations.

Even in emergency situations, employees should first take all possible safety precautions before using communication devices. Employees are subject to local, state, and federal laws governing use of cell phones while driving and will be solely responsible for all traffic violation liabilities resulting from their use of a phone while driving.

Use of District-Provided Communication Devices

The district may provide communication devices and service to some employees to assist them in carrying out their employment-related duties on and off district property. Use of a district-provided communication device is a privilege. The superintendent or designee has sole discretion as to which employees will be provided communication devices and may recall any previously issued communication device. Employees do not have any expectation of privacy in district-provided communication devices or any information stored on them, and such devices may be confiscated and searched at any time.

Employees are expected to exercise reasonable care to protect district provided communication devices from damage or theft and must report any such incidents immediately. The district may require employees to reimburse the district for any damage or theft that was the result of the employee's negligence. Users of district-provided communication devices must abide by any use limitations included in the district's service contract.

Personal Use of District-Provided Communication Devices

Personal use of district-provided communication devices is permissible as long as the use does not exceed the limits of the applicable plan. An employee whose use exceeds plan limitations will be required to reimburse the district for all expenses beyond those covered by the plan and may have privileges suspended or revoked unless the employee can show that all use was for employment-related duties and the device was not used for personal reasons. The amount of personal use of a communication device or service paid for under E-Rate can be no greater than the cost allocation submitted in the request for the E-Rate discount.

Staff Bring Your Own Device Policy

Use of employees' personal communication devices during work hours shall be restricted to classroom or work-related activities. Such personal communication devices may only be used by the staff member and are not for student use. The security of personal computing devices is solely the responsibility

of the staff member. Any loss resulting from damage or theft of personal communication devices in the school setting is not the responsibility of the district.

Approved:

KASB Recommendation – 6/14; 12/14

The superintendent and other administrators designated by the superintendent have the right to supervise licensed staff. The responsibility for the immediate supervision of licensed staff rests with each building principal.

Approved: KASB Recommendation – 2/98; 4/07; 6/19

The board shall adopt an approved evaluation instrument. The instrument shall govern evaluation of teachers, shall be filed with the clerk and may be published in teacher handbooks.

Availability of Evaluation Documents

Completed evaluation documents shall be available to the employee, the superintendent, assistant superintendent, other administrators under whose supervision the teacher works, and others authorized by law.

Evaluation Criteria

Evaluation criteria shall be established by the board.

Approved:

KASB Recommendation – 2/98; 7/03; 4/07

GBK **Suspension**

GBK

The superintendent shall have the authority to suspend licensed employees with pay pending further board action.

The superintendent may suspend licensed employees with pay for any reason, including, but not limited to, one or more of the following: alleged violation of board policy, rule or regulation; refusal or failure to follow a reasonable directive of an administrator; the filing of a complaint against the employee with any civil or criminal authority; the alleged commission of an offense involving moral turpitude; or other good cause.

If a suspension without pay is imposed on an employee, the employee is entitled to pay until the employee has been advised of the basis for suspension and has been given an opportunity to respond.

Approved:

KASB Recommendation – 2/98; 4/07; 6/08

GBN

Nonrenewal and Termination

GBN

Nonrenewal or termination shall be in accordance with Kansas law and the negotiated agreement, as applicable.

Approved:

KASB Recommendation – 2/98; 4/07 ; 6/19

GBO Resignation

GBO

The board shall consider any licensed employee's resignation which is submitted to the board in writing. The board may accept resignations from employees under contract when the resignation will be in the best interests of the district and when such resignations are accompanied by full payment for any applicable liquidated damages due to the board for release from contract pursuant to the negotiated agreement.

If the licensed employee terminates employment in the district without complying with board policy and the negotiated agreement on liquidated damages, the board may petition the State Board of Education to have the teacher's license suspended.

Exit Interviews

Exit interviews may be conducted after an employee resigns.

Approved:

KASB Recommendation – 2/98; 6/06; 4/07; 12/14; 6/18

GBQA Reduction of Teaching Staff

GBQA

If the board decides that the size of the teaching staff must be reduced, guidelines in this policy negotiated agreement, if applicable, shall be followed. Insofar as possible reduction of staff shall be accomplished by attrition due to resignations and retirement.

The following steps will be utilized by the district's administrative staff to reduce the teaching staff:

To determine the number of teaching positions to be reduced, the administrative staff will determine the educational program for the district in accordance with the educational goals established by the board.

In determining which teachers will be nonrenewed due to reduction in force, the number of teachers needed to implement the district's educational program will then be determined by the administrative staff based on those educational goals.

The educational goals and needs of the district, individual certifications, qualifications, training, skills, interests, and evaluations shall be considered.

In the event two or more teachers have similar certifications, qualifications and skills in a teaching area, those teachers who have tenure will be retained over those who are nontenured. In the event all of the teachers have similar certifications, qualifications and skills and all are tenured, the teacher(s) who best meet the needs of the district, considering the factors outlined above and any other relevant factors, will be retained.

Any certified employee who has not been reemployed as a result of reduction of the teaching staff shall be considered for reemployment if a vacancy exists for which the teacher would qualify. The board shall not be required to consider reinstatement of any teacher after a period of one year from the date of nonrenewal. Certified employees who may be eligible for reemployment are required to notify the district

GBQA Reduction of Teaching Staff

GBQA

of their current address. The superintendent will recommend to the board reinstatement of any teacher deemed qualified and able to serve the best interests of the district.

Approved:

KASB Recommendation – 2/98; 4/07; 6/14; 12/14

GBR **Work Schedule** (See JGFB)

GBR

Licensed personnel must be at their assigned area during each duty day. Any teacher who finds it necessary to leave while supervising students shall first secure approval from the principal. Building and playground assignments shall be made by the principal.

Work Schedules

The minimum length of the school day for licensed and professional staff shall be defined in the negotiated agreement. Work schedules for other employees shall be defined by the superintendent consistent with the Fair Labor Standards Act (FLSA) and the provisions of this policy.

Attendance Required

Regular attendance is required of all employee's subject to leave provisions in district policy or the negotiated agreement, as appropriate. Excessive absences or tardiness, unauthorized leave or unexcused absences may result in disciplinary action including termination of employment.

Approved:

KASB Recommendation – 2/98; 9/00; 11/04; 4/07

There shall be a program of professional development for employees, which meets minimum statutory and State Board of Education requirements.

The program shall promote:

- continuous professional development;
- improving academic achievement for all students;
- diversification in academic foundations or subject knowledge; and
- improved job effectiveness and enhanced skills.

When appropriate, the superintendent shall consult with the staff about professional development activities.

All appropriate employees shall attend professional development sessions unless excused by the superintendent. Professional development programs may use all or a portion of the workday.

For more information on this topic, see the district's professional development handbook.

Approved:

KASB Recommendation – 2/98; 7/03; 4/07; 12/14

GBRD Staff Meetings

GBRD

Staff meetings for licensed personnel shall be called by the administration.

Approved:

KASB Recommendation – 2/98; 4/07; 6/19

GBRE **Additional Duty**

GBRE

The board may establish other educational assignments that may extend beyond the school day or time class is in session. Compensation for such extended assignments, if any, will be as specified in the negotiated agreement.

Approved:

KASB Recommendation – 2/98; 4/07; 12/14; 6/16; 10/17

GBRF **Student and Parent Conferences**

GBRF

Teachers shall be available for student and/or parent conferences at mutually convenient times.

The principal may schedule individual or building-wide parent-teacher conferences as necessary.

Approved:

KASB Recommendation – 12/15; 10/17

GBRG Non-School Employment

GBRG

The board reserves the right of exclusive access to the professional services of licensed employees in accordance with the terms of the contract.

Licensed employees shall not engage in outside employment which interferes with their duties.

Approved:

KASB Recommendation – 2/98; 4/07

GBRGA Consulting

GBRGA

Certified employees may be excused from regular duty by the board to perform technical or instructional services as consultants to other district, government agencies or private industry.

Requests for approval to serve as a consultant shall be submitted in writing to the superintendent who shall forward the request together with his/her recommendation to the board for consideration.

Approved:

KASB Recommendation – 12/14

GBRGB Tutoring for Pay

GBRGB

Teachers shall not receive pay for tutoring or private instruction at school unless approved in advance by the board.

Approved:

KASB Recommendation – 2/98; 4/07

Paid Leave

Licensed employees will be provided with paid leave and unpaid leave in accordance with applicable law and the negotiated agreement. The board reserves the right to grant additional leave.

Approved:

KASB Recommendation – 12/14 ; 6/19

GBRIBA Disability Leave

GBRIBA

The board may grant leave of absence for disability with or without pay.

Approved:

KASB Recommendation – 2/98; 4/07

GBRJ Substitute Teaching

GBRJ

Qualified substitute teachers shall be secured for the district.

The superintendent may meet with potential substitutes before the start of each school year.

The superintendent and principals shall compile a list of available substitute teachers, and each principal shall have a current copy.

Principals (or other designated employees) shall be responsible for obtaining substitute teachers from the list and employing them as needed.

The board shall establish the rate of pay for substitute teachers each July.

Substitutes are encouraged to prepare, in advance, for the subjects in which they are most likely to substitute in case lesson plans are not available.

Each principal shall file a report with the superintendent listing the substitutes used in the building during each pay period.

The superintendent shall meet with principals and review the performance of substitutes.

Approved:

KASB Recommendation - 9/97; 2/98; 4/07; 10/17

An educator in the performance of assigned duties shall:

- meet and continuously maintain applicable certification or licensure requirements as defined by state and/or federal law for position held;
- actively support and pursue the district's educational mission;
- recognize the basic dignity of all individuals;
- maintain professional integrity;
- avoid accepting anything of substantial value offered by another which is known to be or which may appear to influence judgment or the performance of duties;
- accurately represent professional qualifications; and
- be responsible to present any subject matter in a fair and accurate manner.

Approved:

KASB Recommendation – 2/98; 4/07; 12/16; 10/17

GCA Compensation and Work Assignments (See GAN)

GCA

Classified employees shall be paid according to pay rates established by the board. Payment shall be made at the established pay date following the end of each pay period.

Work Assignments

Subject to board approval, the superintendent shall develop time schedules for all classified employees. Work assignments for classified employees shall be made by the superintendent.

Attendance Required

Regular attendance is required of all employees subject to leave provisions in district policy, employee handbooks or other documents approved by the board. Excessive absences or tardiness, unauthorized leave or unexcused absences may result in disciplinary action including termination of employment.

Workweek

For the purposes of Fair Labor Standards Act (FLSA) compliance, the workweek will be 12:00 a.m. Monday until 11:59 p.m. Sunday.

Classification of Employees

For purposes of compliance with the Fair Labor Standards Act (FLSA), the superintendent shall ensure that all job positions are classified as exempt or nonexempt and that employees are made aware of such classifications.

Overtime

No non-exempt employee shall work more than 40 hours per week without the prior written permission of the appropriate supervisor. Principals and supervisors shall monitor employees' work to ensure that the overtime provisions of this policy and the Fair Labor Standards Act are followed. All employees shall be compensated for overtime worked, at a rate of one and a half times their normal rate of pay for any hours worked over 40 in a workweek.

GCA Compensation and Work Assignments

GCA-2

Nonexempt employees whose workweek is less than 40 hours will be paid at the regular rate of pay for time worked up to 40 hours. Overtime pay will be provided only if an employee works more than 40 hours in a workweek.

Compensation for Out-of-Town/Overnight Trips

When classified personnel are required to be out of town on district business, they shall be compensated in the following manner:

Regular or overtime pay as appropriate for time away from Blue Rapids MINUS:

1. Eight hours for sleep when overnight;
2. Reasonable time for meals (normally one hour per meal); and
3. Time used exclusively for pleasure or personal business.

Approved:

KASB Recommendation – 2/98; 9/00; 11/04; 4/07

GCH Supervision

GCH

The superintendent or designated representative has the responsibility to supervise all noncertified employees not directly under the supervision of a building principal. A building principal has the responsibility to supervise all noncertified employees who are assigned to the building.

Approved:

KASB Recommendation – 12/14

GCI **Classified Employee Evaluation** (See GAK)

GCI

All classified employees shall be evaluated twice during their first year of employment and at least once a year during subsequent years. Evaluation documents will be on file with the clerk of the board.

Classified employees shall be evaluated by the supervisor to whom they are assigned. Classified employees shall be evaluated on their personal qualities, their commitment to duty and work skills related to their job description. A copy of the completed evaluation will be given to the employee after it is signed by the employee and the evaluator and will be placed in the employee's personnel file.

Approved:

KASB Recommendation – 2/98; 4/07

GCIA Evaluation of Coaches and Sponsors

GCIA

All employees contracted to coach or sponsor an activity shall be evaluated at least once a year.

Evaluation documents will be on file with the clerk of the board.

Coaches and sponsors shall be evaluated by the supervisor to whom they are assigned. Evaluations shall be based on the employee's personal qualities, their commitment to duty, their work skills, and other appropriate issues related to the activity sponsor/coach job description. A copy of the completed evaluation shall be given to the employee after it is signed by the employee and the evaluator and will be placed in the employee's personnel file.

Approved:

KASB Recommendation 6/09

GCK Suspension

GCK

The superintendent shall have the authority to suspend classified employees with or without pay. If a suspension without pay is imposed on a classified employee, the employee is entitled to pay until the employee has been advised of the basis for suspension and has been given an opportunity to respond.

Approved:

KASB Recommendation – 2/98; 4/07; 6/08

GCRF Non-School Employment

GCRF

Classified employees shall not be excused during their regularly assigned time schedule to perform outside employment. Classified employees shall not engage in outside employment which interferes with their duties.

Approved:

KASB Recommendation – 2/98; 4/07

Paid Leave

Full-time employees will be credited with paid leave in accordance with the terms of applicable employee handbooks, any contracts and/or work agreements, and the terms of this policy.

Sick Leave

Staff absent for three or more consecutive days and utilizing sick leave may be asked to submit a doctor's statement verifying the illness or disability.

If paid leave is used for sick leave purposes, such leave shall be available for the personal illness of the employee or the illness of the employee's spouse, child, grandchild, parent or the parent or child of the employee's spouse.

If a classified employee leaves employment with the district or is terminated, no pay will be granted for unused sick leave.

Unpaid Leave

The board may grant a period of unpaid leave as determined by the board. The board shall not be required to pay any salary or benefits during periods of unpaid leave except as may be required by law.

Jury Leave

Any employee called to jury duty will be granted paid leave, and such leave will not be deducted from the employee's credited paid leave. Any payment or fees received for the performance of jury duty, outside of necessary travel expenses and meal allowances, will be paid to the district.

Approved:

KASB Recommendation – 7/03; 4/07; 12/14

GCRI Paid Holidays

GCRI

All non-certified personnel will receive compensation for holidays that occur during their contract period:

*9 month employees: Labor Day, Thanksgiving Day, Christmas, New Years Day, Memorial Day - if working;

*12 month employees: Labor Day, Thanksgiving Day, Christmas, New Years Day, Memorial Day and July 4th.

All holidays will be listed on employee contracts as applicable. Compensation of holidays will be limited to the number of hours normally worked, i.e. bus drivers who normally work 4 hours per day will receive 4 hours pay.

Twelve month employees will receive either Friday or Monday off with pay when a holiday listed on their contract falls on Saturday or Sunday. The superintendent will designate if the day off is Friday or Monday. Further, twelve month employees who were working for USD #498 prior to May 1, 1992, will receive an additional day off for winter break. The additional day will be taken 1/2 day before and 1/2 day after or the day before or the day after as determined by the superintendent.

Approved:

KASB Recommendation – 12/14