

KELSO HIGH SCHOOL

Schroeder Field

Sound System Replacement

GENERAL NOTES

- CONDUIT SIZE, QUANTITY AND LOCATIONS ARE RECOMMENDATIONS OF THE AV CONSULTANT AND ARE RECOMMENDATIONS ONLY. ACTUAL ROUTING, SIZING AND LOCATION OF CONDUIT TO BE CONFIRMED BY ELECTRICAL ENGINEER OR ELECTRICAL CONTRACTOR.
- REFER TO ELECTRICAL DRAWINGS FOR ACTUAL CONDUIT AND ROUGH IN REQUIREMENTS. IF CUSTOM ROUGH IN BOXES DIFFER BETWEEN ELECTRICAL AND AV DRAWINGS AV DRAWINGS TAKE PRIORITY.
- VERIFY FIT AND FINISH OF ALL ELECTRICAL BOXES. COORDINATION OF TRIM DEVICE WITH ROUGH IN PROVIDED BY THE ELECTRICAL CONTRACTOR SHALL BE THE RESPONSIBILITY OF THE SYSTEMS INTEGRATOR.
- GENERAL CONTRACTOR IS RESPONSIBLE FOR PROVIDING ALL STRUCTURAL ATTACHMENT POINTS FOR AUDIO AND VISUAL EQUIPMENT TO STRUCTURE. DRAWINGS SHOWING STRUCTURAL ATTACHMENT POINTS ARE FOR REFERENCE ONLY.
- SYMBOL INDICATES CONDUIT REQUIREMENT. MULTIPLE SYMBOLS ON THE SAME LINE INDICATES MULTIPLE CONDUITS ARE REQUIRED BETWEEN THOSE DEVICES.

GENERAL SYMBOLS

SYMBOL	DESCRIPTION
	OFF SHEET DRAWING NOTES
	ON SHEET DRAWINGS NOTES
	CABLE OR WIRE TYPE DESIGNATION
	ON SHEET CABLE CONNECTION ("X" DENOTES MATING CONNECTION)
	CABLE TERMINATION OR CONNECTOR TYPE

ELECTRICAL SYMBOLS

SYMBOL	FUNCTION
	CONDUIT TRANSITION (TYPICALLY ABOVE CEILING)
	CONDUIT TO NO CONDUIT TRANSITION OR USED TO SHOW CONDUIT PASSING OVER OR UNDER OTHER CONDUITS.
	CONDUIT OR CABLE BUNDLE CONTENTS

SHEET DETAIL IDENTIFICATION (BUG)

KELSO HIGH SCHOOL DETAIL DESCRIPTION

DRAWING LEGEND

AV0.1	LEGENDS
AV1.0	SITE PLAN
AV1.1	1ST FLOOR PLAN
AV1.2	2ND FLOOR PLAN
AV2.1	ROOF PLAN
AV3.1	DETAILS
AV7.1	BLOCK DIAGRAMS

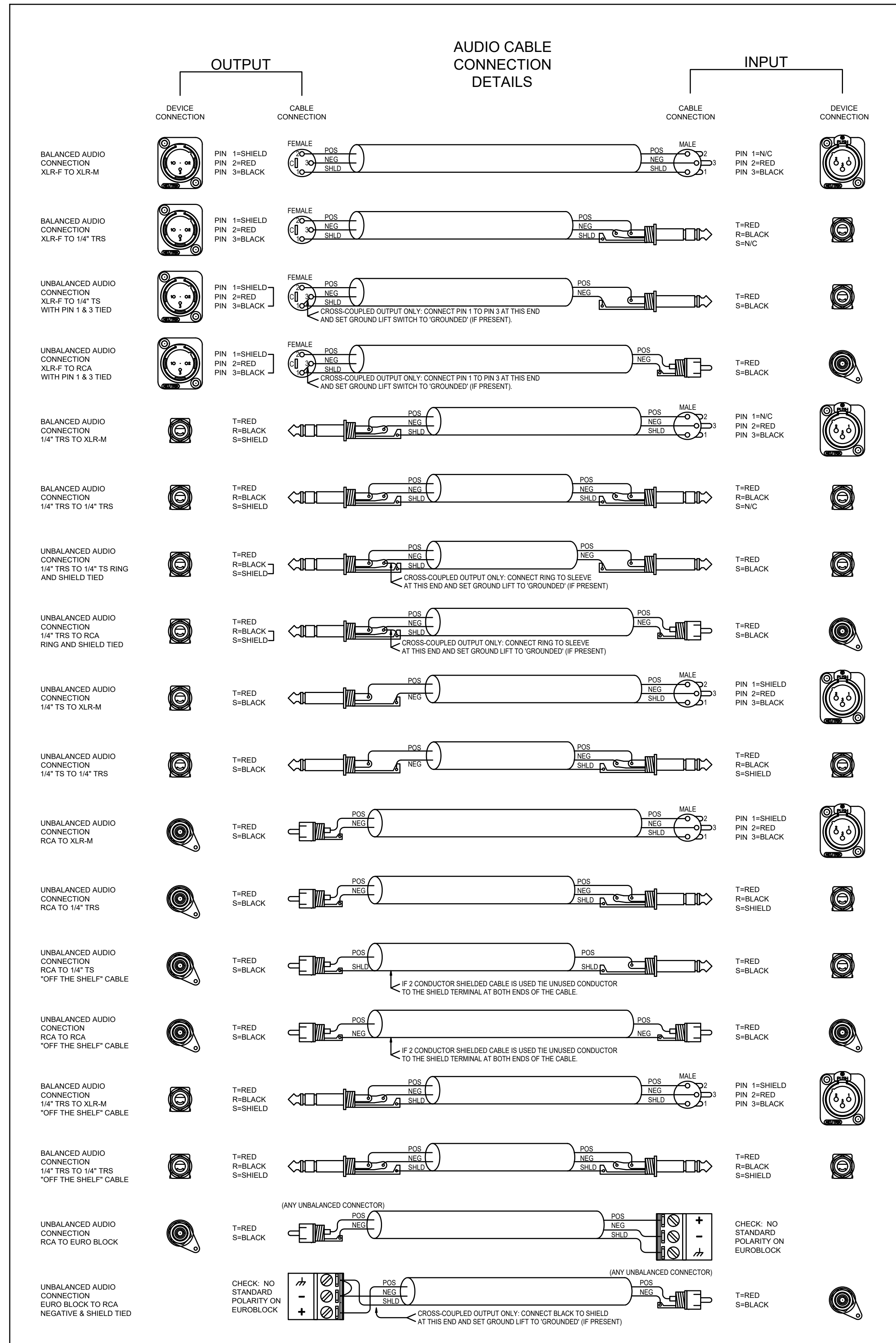
ROUGH-IN LEGEND

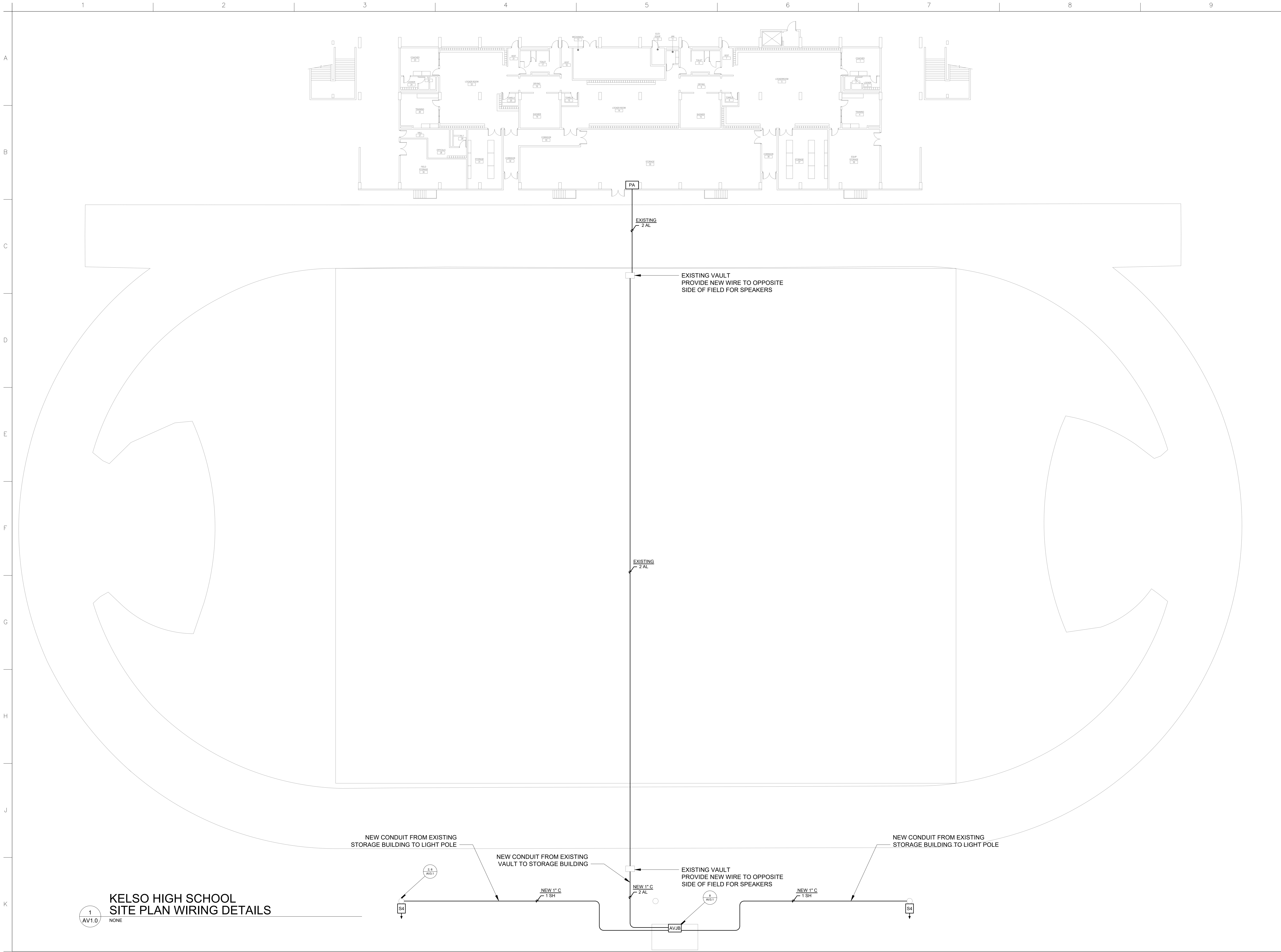
SYMBOL	DEVICE DESCRIPTION	ROUGH-IN	LOCATION
	EXISTING FIELD VAULT CABLE PULL LOCATION	EXISTING	SEE SHEET AV1.0
	AVJB REPRESENTS A JUNCTION BOX FOR USE IN PULLING AV CABLING TO DEVICES.	ROUGH IN AS REQUIRED BY CONDUIT QUANTITY	AS NOTED ON PLANS
	EXISTING J-BOX LOCATION	SEE SITE CONDITIONS	-
	NEW FIELD LOCKING WALL BOX	GAI-TRONICS 255-001	MOUNT AT 48" ABOVE TRACK LEVEL
	EXISTING TERMINATION LOCATION (MAY REQUIRE REPLACE OR BLANK PLATE)	PROVIDE BLANK PANELS PER SITE CONDITIONS	VARIES
	EXISTING SPEAKER LOCATION (TYPICALLY AN 8" WALL SPEAKER BAFFLE)	SEE SITE CONDITIONS REPLACE EXISTING	-
	NEW STORAGE SPEAKER LOCATION	4 SQ DEEP BOX WITH SINGLE GANG RING	AS HIGH ON WALL AS POSSIBLE
	LOWER SEATING SPEAKERS	ONE SYSTEMS 112 HTH	MOUNT AS SHOWN ON PLANS
	UPPER SEATING SPEAKERS	ONE SYSTEMS 108 HTH	MOUNT AS SHOWN ON PLANS
	FIELD SPEAKERS	ONE SYSTEMS 212 HC	MOUNT AS SHOWN ON PLANS
	POLE MOUNT SPEAKERS	COMMUNITY R.25-94BTZ	MOUNT AT 20' AFF
	EXISTING VOLUME CONTROL REPLACE WITH NEW VOLUME CONTROL	SEE EXISTING CONDITIONS	-
	DOUBLE DUPLEX POWER OUTLET (FOR VIDEO EQUIPMENT ONLY)	PER NEC	PER NEC
	DUPLEX POWER OUTLET (FOR VIDEO EQUIPMENT ONLY)	PER NEC	PER NEC

WIRE TYPE DESCRIPTION

WIRE LEGEND					
TYPE	QTY	DESCRIPTION	MANUFACTURER	NON PLENUM	PLENUM
AD	X	AUDIO (DIGITAL MIC)	POLYCOM	CUSTOM	CUSTOM
AL	X	AUDIO (LINE)	BELDEN	9451	9451P
AM	X	AUDIO (MICROPHONE)	BELDEN	9451	9451P
AN	X	AUDIO (NETWORK OVER CAT CABLE)	GEPCO	-	2131611E
AP	X	MULTIPAIR AUDIO	BELDEN	1817R	1817R
CAT	X	DIGITAL MEDIA CAT CABLE	CRESTRON	DM-CBL-NP-SP500	DM-CBL-P-SP500
CG	X	CONTROL (GENERAL)	BELDEN	9751	8274S
CN	X	DATA	BELDEN	1583A	1583A
CP	X	CONTROL (NETWORK)	CRESTRON	CRESNET	CRESNET-P
CQ	X	QUICK MEDIA BIASEE CABLE	CRESTRON	CRES-CAT-QM-NP	CRES-CAT-QM-P
CR	X	CONTROL (IR)	BELDEN	9451	9451P
CS	X	CONTROL (SERIAL)	BELDEN	9451	9451P
D	X	DATA	BELDEN	1583A	1583A
DM	X	DIGITAL MEDIA BG STP CABLE	CRESTRON	DM-CBL-8G-NP-SP500	DM-CBL-8G-P-SP500
DVI	X	DVI MOLDED CABLE	VARIES	-	-
EXT(X)	X	EXTRON MOLDED CABLE	EXTRON	(X) DENOTE NUMBER	-
IM	X	PRODUCTION INTERCOM	WEST PENN	D-510	D-510
HDMI	X	HDMI MOLDED CABLE	VARIES	-	-
LNK(X)	X	MANUFACTURER LINK CABLE	VARIES	1583A	1583A
P	X	LOW VOLTAGE POWER	BELDEN	8461	8461
R	X	RGBHV	LIBERTY	RGB5C	RGB5C-PLN
SL	X	SPEAKER (8 OHM) LONG	WEST PENN	C-210	C-210
SH	X	SPEAKER (8 OHM) SHORT	BELDEN	5100UE	6100UE
SZ	X	SPEAKER (70 VOLT)	BELDEN	5300UE	6300UE
T	X	TELEPHONE/DATA	BELDEN	1583A	1583A
VS	X	COMPOSITE VIDEO (SHORT)	BELDEN	1505A	1506A
VL	X	COMPOSITE VIDEO (LONG)	BELDEN	1694A	1696A
VN	X	VIDEO NETWORK	GEPCO	10GX2F	-
VDO(X)	X	VIDEO ADAPTER	VARIOUS	(X) DENOTE NUMBER	-
Y	X	S-VIDEO (YC)	BELDEN	QTY (2) 1505A	QTY (2) 1506A

CABLE LEGEND





MBF Audiovisual & Acoustical Consulting

Specialty in Video, Acoustical, Audio, Video and Control Systems

1328 - 117TH DRIVE SE, LAKE STEVENS, WA 98258

CONTACT: JOHN R. HARDWICK - PHONE: 206-714-4003

REV DATE:					
REV #1					
REV #2					
REV #3					
REV #4					
REV #5					

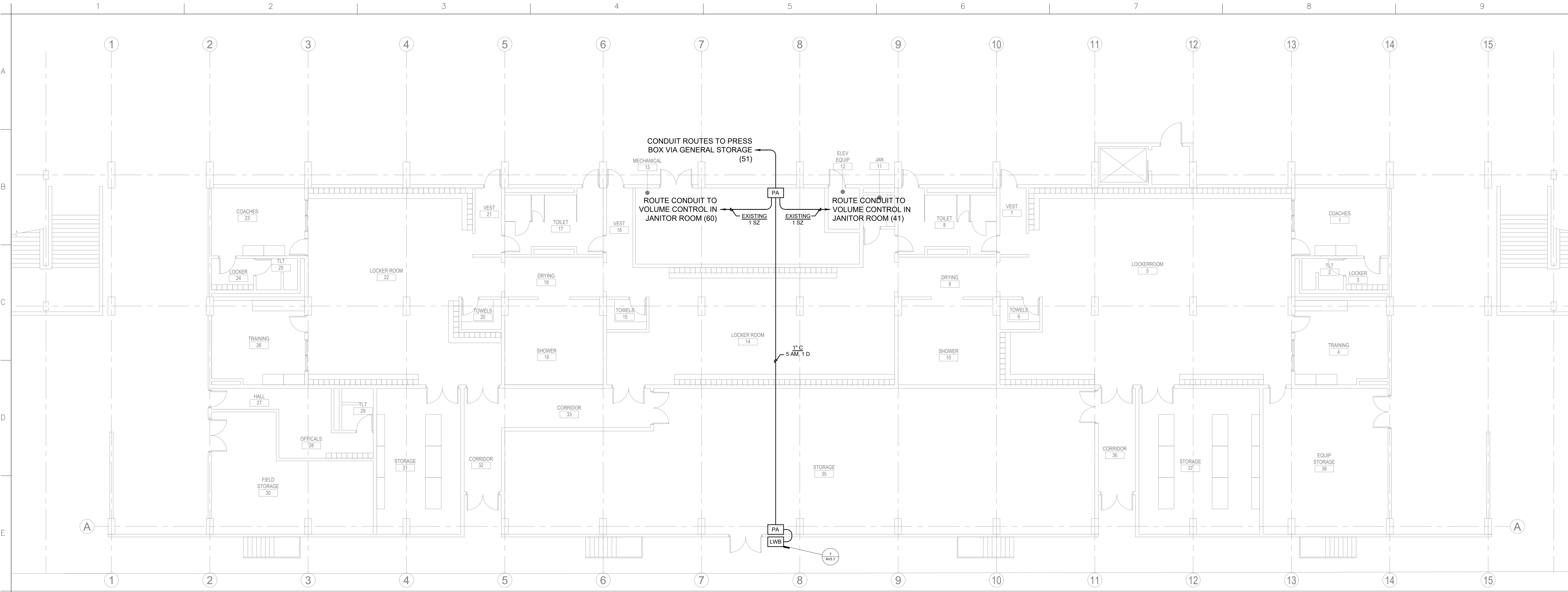
DATE:	06-24-19
JOB:	06-0519
FILE:	
DRAWN:	JRH
CHECKED:	

KELSO HIGH SCHOOL
SCHROEDER FIELD
SOUND SYSTEM REPLACEMENT

SITE PLAN

KOSD

AV1.0



1
AV1.1
NONE

KELSO HIGH SCHOOL
1ST FLOOR TRACK PANEL ROUGH IN

ROUGH-IN LEGEND

SYMBOL	DEVICE DESCRIPTION	ROUGH-IN	LOCATION
	EXISTING FIELD VAULT CABLE PULL LOCATION	EXISTING	SEE SHEET AV1.0
	AVJB REPRESENTS A JUNCTION BOX FOR USE IN PULLING AV CABLING TO DEVICES.	ROUGH IN AS REQUIRED BY CONDUIT QUANTITY	AS NOTED ON PLANS
	EXISTING J-BOX LOCATION	SEE SITE CONDITIONS	-
	NEW FIELD LOCKING WALL BOX	GAI-TRONICS 255-001	MOUNT AT 48" ABOVE TRACK LEVEL
	EXISTING TERMINATION LOCATION (MAY REQUIRE REPLACE OR BLANK PLATE)	PROVIDE BLANK PANELS PER SITE CONDITIONS	VARIES
	EXISTING SPEAKER LOCATION (TYPICALLY AN 8" WALL SPEAKER BAFFLE)	SEE SITE CONDITIONS REPLACE EXISTING	-
	NEW STORAGE SPEAKER LOCATION	4 SO DEEP BOX WITH SINGLE GANG RING	AS HIGH ON WALL AS POSSIBLE
	LOWER SEATING SPEAKERS	ONE SYSTEMS 112.HTH	MOUNT AS SHOWN ON PLANS
	UPPER SEATING SPEAKERS	ONE SYSTEMS 108.HTH	MOUNT AS SHOWN ON PLANS
	FIELD SPEAKERS	ONE SYSTEMS 212.HC	MOUNT AS SHOWN ON PLANS
	POLE MOUNT SPEAKERS	COMMUNITY R.25-94BTZ	MOUNT AT 20' AFF
	EXISTING VOLUME CONTROL REPLACE WITH NEW VOLUME CONTROL	SEE EXISTING CONDITIONS	-
	DOUBLE DUPLEX POWER OUTLET (FOR VIDEO EQUIPMENT ONLY)	PER NEC	PER NEC
	DUPLEX POWER OUTLET (FOR VIDEO EQUIPMENT ONLY)	PER NEC	PER NEC

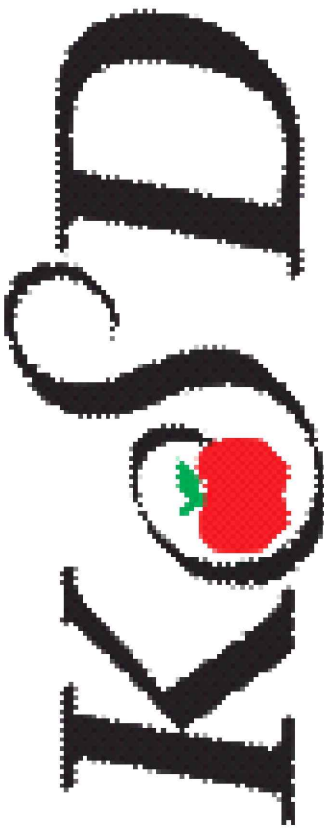
WIRE TYPE DESCRIPTION

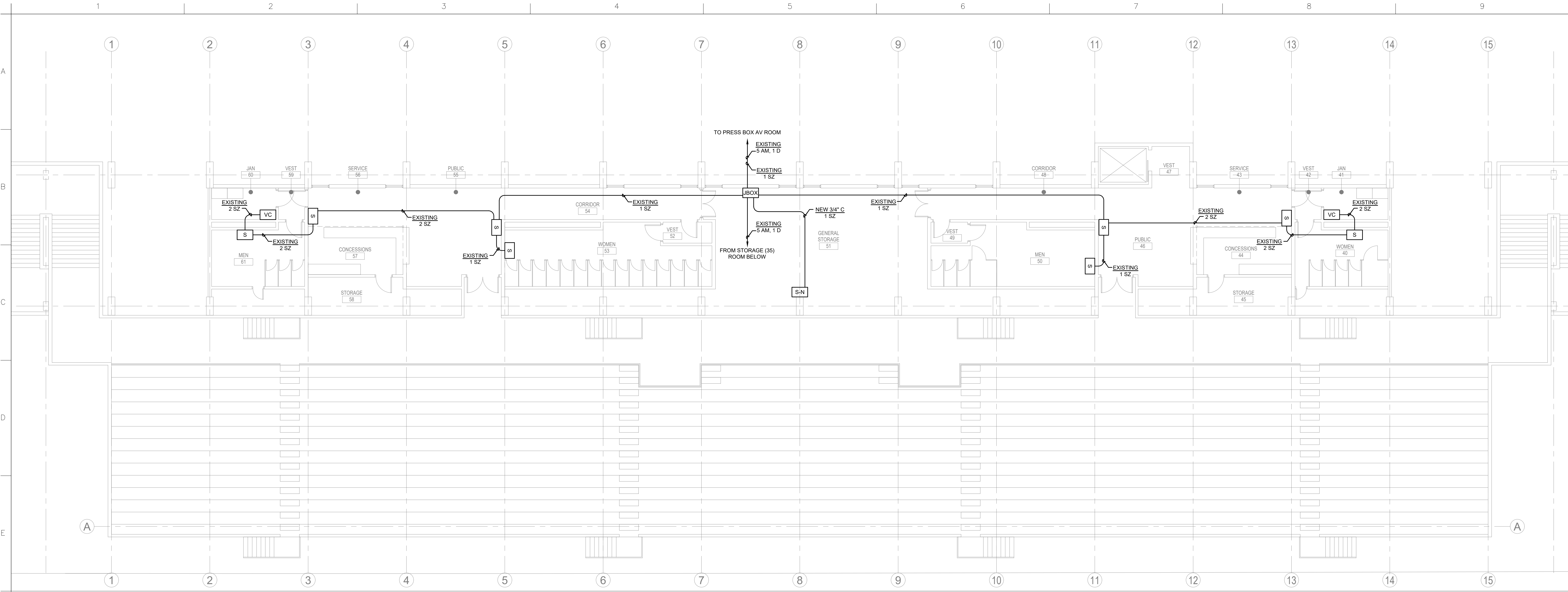
WIRE LEGEND					
TYPE	QTY	DESCRIPTION	MANUFACTURER	NON PLENUM	PLENUM
AD	X	AUDIO (DIGITAL MIC)	POLYCOM	CUSTOM	CUSTOM
AL	X	AUDIO (LINE)	BELDEN	9451	9451P
AM	X	AUDIO (MICROPHONE)	BELDEN	9451	9451P
AN	X	AUDIO (NETWORK OVER CAT CABLE)	GEPCO	-	2131611E
AP	X	MULTIPAIR AUDIO	BELDEN	1817R	1817R
CAT	X	DIGITAL MEDIA CAT CABLE	CRESTRON	DM-CBL-NP-SP500	DM-CBL-P-SP500
CG	X	CONTROL (GENERAL)	BELDEN	9751	92743
CN	X	DATA	BELDEN	1583A	1583A
CP	X	CONTROL (NETWORK)	CRESTRON	CRESNET	CRESNET-P
CQ	X	QUICK MEDIA SIAMESE CABLE	CRESTRON	CRES-CAT-QM-NP	CRES-CAT-QM-P
CR	X	CONTROL (IR)	BELDEN	9451	9451P
CS	X	CONTROL (SERIAL)	BELDEN	9451	9451P
D	X	DATA	BELDEN	1583A	1583A
DM	X	DIGITAL MEDIA RG STP CABLE	CRESTRON	DM-CBL-RG-NP-SP500	DM-CBL-RG-P-SP500
DVI	X	DVI MOLDED CABLE	VARIES	-	-
EXT(X)	X	EXTRON MOLDED CABLE	EXTRON	(X) DENOTE NUMBER	-
IM	X	PRODUCTION INTERCOM	WEST PENN	D-510	D-510
HDMI	X	HDMI MOLDED CABLE	VARIES	-	-
LNK(X)	X	MANUFACTURER LINK CABLE	VARIES	1583A	1583A
P	X	LOW VOLTAGE POWER	BELDEN	8461	8461
R	X	RGBHV	LIBERTY	RGBSC	RGBSC-PLN
SL	X	SPEAKER (8 OHM) LONG	WEST PENN	C-210	C-210
SH	X	SPEAKER (8 OHM) SHORT	BELDEN	5100UE	5100UE
SZ	X	SPEAKER (70 VOLT)	BELDEN	5300UE	5300UE
T	X	TELEPHONE/DATA	BELDEN	1583A	1583A
VS	X	COMPOSITE VIDEO (SHORT)	BELDEN	1505A	1505A
VL	X	COMPOSITE VIDEO (LONG)	BELDEN	1694A	1694A
VN	X	VIDEO NETWORK	GEPCO	-	10GX32F
VDO(X)	X	VIDEO ADAPTER	VARIOUS	(X) DENOTE NUMBER	-
Y	X	S-VIDEO (VIC)	BELDEN	QTY (2) 1505A	QTY (2) 1506A

1328 - 117TH DRIVE SE, LAKE STEVENS, WA 98258
CONTACT: JOHN R. HARDWICK - PHONE: 206-714-4003

REV DATE:	REV #1	REV #2	REV #3	REV #4	REV #5
DATE:	06-24-19	06-05-19		JRH	
JOB:					
FILE:					
DRAWN:					
CHECKED:					

KELSO HIGH SCHOOL
SCHROEDER FIELD
SOUND SYSTEM REPLACEMENT
1ST FLOOR PLAN





1

AV1.2

NONE

KELSO HIGH SCHOOL
2ND FLOOR SPEAKER REPLACEMENT

ROUGH-IN LEGEND

SYMBOL	DEVICE DESCRIPTION	ROUGH-IN	LOCATION
	EXISTING FIELD VAULT CABLE PULL LOCATION	EXISTING	SEE SHEET AV1.0
	AVJB REPRESENTS A JUNCTION BOX FOR USE IN PULLING AV CABLEING TO DEVICES.	ROUGH IN AS REQUIRED BY CONDUIT QUANTITY	AS NOTED ON PLANS
	EXISTING J-BOX LOCATION	SEE SITE CONDITIONS	-
	NEW FIELD LOCKING WALL BOX	GAI-TRONICS 255-001	MOUNT AT 48" ABOVE TRACK LEVEL
	EXISTING TERMINATION LOCATION (MAY REQUIRE REPLACE OR BLANK PLATE)	PROVIDE BLANK PANELS PER SITE CONDITIONS	VARIES
	EXISTING SPEAKER LOCATION (TYPICALLY AN 8" WALL SPEAKER BAFFLE)	SEE SITE CONDITIONS REPLACE EXISTING	-
	NEW STORAGE SPEAKER LOCATION	4 SO DEEP BOX WITH SINGLE GANG RING	AS HIGH ON WALL AS POSSIBLE
	LOWER SEATING SPEAKERS	ONE SYSTEMS 112-HTH	MOUNT AS SHOWN ON PLANS
	UPPER SEATING SPEAKERS	ONE SYSTEMS 108-HTH	MOUNT AS SHOWN ON PLANS
	FIELD SPEAKERS	ONE SYSTEMS 212-HC	MOUNT AS SHOWN ON PLANS
	POLE MOUNT SPEAKERS	COMMUNITY R-25-94BTZ	MOUNT AT 20' AFF
	EXISTING VOLUME CONTROL REPLACE WITH NEW VOLUME CONTROL	SEE EXISTING CONDITIONS	-
	DOUBLE DUPLEX POWER OUTLET (FOR VIDEO EQUIPMENT ONLY)	PER NEC	PER NEC
	DUPLEX POWER OUTLET (FOR VIDEO EQUIPMENT ONLY)	PER NEC	PER NEC

WIRE TYPE DESCRIPTION

WIRE LEGEND					
TYPE	QTY	DESCRIPTION	MANUFACTURER	NON PLENUM	PLENUM
AD	X	AUDIO (DIGITAL MIC)	POLYCOM	CUSTOM	CUSTOM
AL	X	AUDIO (LINE)	BELDEN	9451	9451P
AM	X	AUDIO (MICROPHONE)	BELDEN	9451	9451P
AN	X	AUDIO (NETWORK OVER CAT CABLE)	GEPCO	-	2131611E
AP	X	MULTIPAIR AUDIO	BELDEN	1817R	1817R
CAT	X	DIGITAL MEDIA CAT CABLE	CRESTRON	DM-CBL-NP-SP500	DM-CBL-P-SP500
CG	X	CONTROL (GENERAL)	BELDEN	9751	92743
CN	X	DATA	BELDEN	1583A	1583A
CP	X	CONTROL (NETWORK)	CRESTRON	CRESNET	CRESNET-P
CQ	X	QUICK MEDIA SIAMESE CABLE	CRESTRON	CRES-CAT-QM-NP	CRES-CAT-QM-P
CR	X	CONTROL (IR)	BELDEN	9451	9451P
CS	X	CONTROL (SERIAL)	BELDEN	9451	9451P
D	X	DATA	BELDEN	1583A	1583A
DM	X	DIGITAL MEDIA RG STP CABLE	CRESTRON	DM-CBL-RG-NP-SP500	DM-CBL-RG-P-SP500
DVI	X	DVI MOLDED CABLE	VARIES	-	-
EXT(X)	X	EXTRON MOLDED CABLE	EXTRON	(X) DENOTE NUMBER	-
IM	X	PRODUCTION INTERCOM	WEST PENN	D-510	D-510
HDMI	X	HDMI MOLDED CABLE	VARIES	-	-
LNK(X)	X	MANUFACTURER LINK CABLE	VARIES	1583A	1583A
P	X	LOW VOLTAGE POWER	BELDEN	8461	8461
R	X	RGBHV	LIBERTY	RGBSC	RGBSC-PLN
SL	X	SPEAKER (8 OHM) LONG	WEST PENN	C-210	C-210
SH	X	SPEAKER (8 OHM) SHORT	BELDEN	5100UE	5100UE
SZ	X	SPEAKER (70 VOLT)	BELDEN	5300UE	5300UE
T	X	TELEPHONE/DATA	BELDEN	1583A	1583A
VS	X	COMPOSITE VIDEO (SHORT)	BELDEN	1506A	1506A
VL	X	COMPOSITE VIDEO (LONG)	BELDEN	1694A	1694A
VN	X	VIDEO NETWORK	GEPCO	-	10GX32F
VD(X)	X	VIDEO ADAPTER	VARIOUS	(X) DENOTE NUMBER	-
Y	X	S-VIDEO (VIC)	BELDEN	QTY (2) 1505A	QTY (2) 1506A

MBF Audiovisual &
Acoustical Consulting

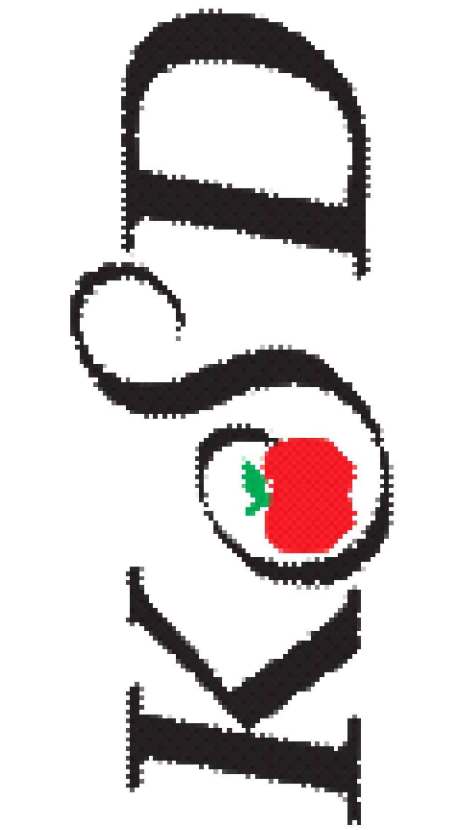
1328 - 117TH DRIVE SE, LAKE STEVENS, WA 98258
CONTACT: JOHN R. HARDWICK - PHONE: 206-714-4003

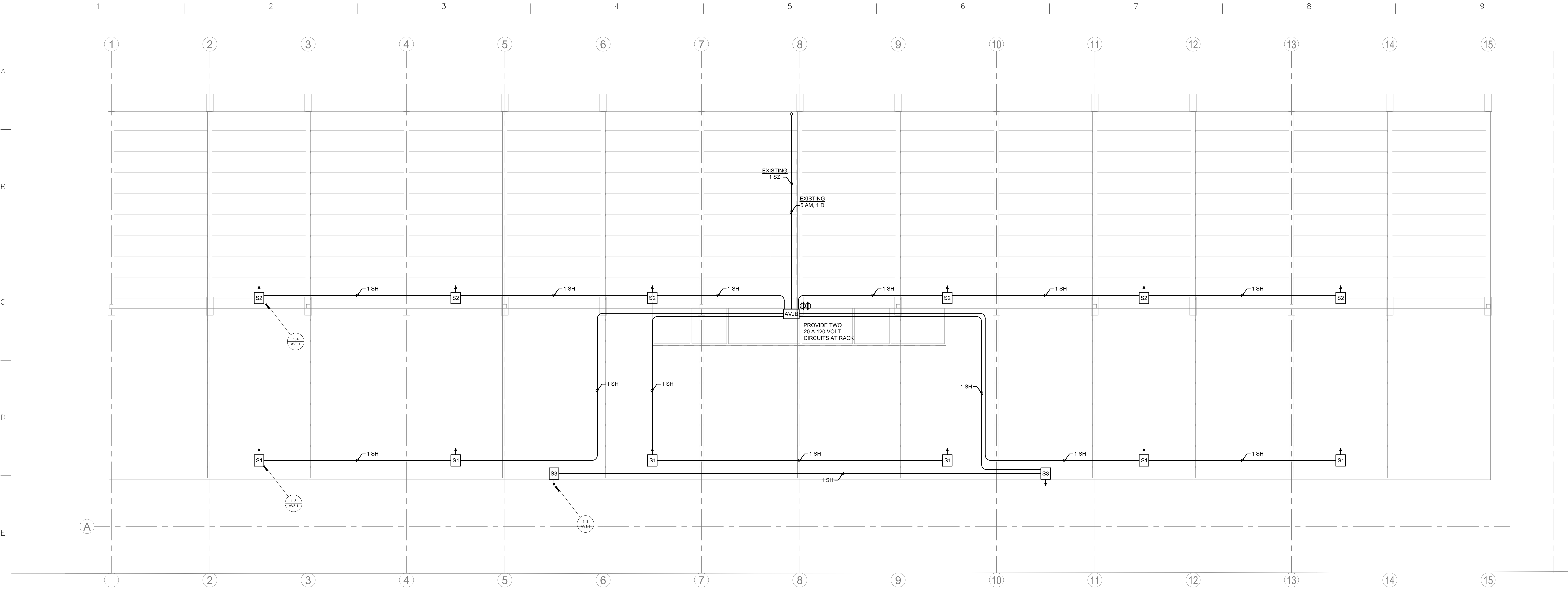
REV DATE:	REV #1	REV #2	REV #3	REV #4	REV #5

DATE:	06-24-19
JOB:	06-0519
FILE:	
DRAWN:	JRH
CHECKED:	

KELSO HIGH SCHOOL
SCHROEDER FIELD
SOUND SYSTEM REPLACEMENT

2ND FLOOR PLAN





1 AV2.1
KELSO HIGH SCHOOL
SPEAKER LOCATION
NONE

ROUGH-IN LEGEND

SYMBOL	DEVICE DESCRIPTION	ROUGH-IN	LOCATION
	EXISTING FIELD VAULT CABLE PULL LOCATION	EXISTING	SEE SHEET AV1.0
	AVJB REPRESENTS A JUNCTION BOX FOR USE IN PULLING AV CABLING TO DEVICES.	ROUGH IN AS REQUIRED BY CONDUIT QUANTITY	AS NOTED ON PLANS
	EXISTING J-BOX LOCATION	SEE SITE CONDITIONS	-
	NEW FIELD LOCKING WALL BOX	GAI-TRONICS 255-001	MOUNT AT 48" ABOVE TRACK LEVEL
	EXISTING TERMINATION LOCATION (MAY REQUIRE REPLACE OR BLANK PLATE)	PROVIDE BLANK PANELS PER SITE CONDITIONS	VARIES
	EXISTING SPEAKER LOCATION (TYPICALLY AN 8" WALL SPEAKER BAFFLE)	SEE SITE CONDITIONS REPLACE EXISTING	-
	NEW STORAGE SPEAKER LOCATION	4 SO DEEP BOX WITH SINGLE GANG RING	AS HIGH ON WALL AS POSSIBLE
	LOWER SEATING SPEAKERS	ONE SYSTEMS 112.HTH	MOUNT AS SHOWN ON PLANS
	UPPER SEATING SPEAKERS	ONE SYSTEMS 108.HTH	MOUNT AS SHOWN ON PLANS
	FIELD SPEAKERS	ONE SYSTEMS 212.HC	MOUNT AS SHOWN ON PLANS
	POLE MOUNT SPEAKERS	COMMUNITY R.25-94BTZ	MOUNT AT 20' AFF
	EXISTING VOLUME CONTROL REPLACE WITH NEW VOLUME CONTROL	SEE EXISTING CONDITIONS	-
	DOUBLE DUPLEX POWER OUTLET (FOR VIDEO EQUIPMENT ONLY)	PER NEC	PER NEC
	DUPLEX POWER OUTLET (FOR VIDEO EQUIPMENT ONLY)	PER NEC	PER NEC

WIRE TYPE DESCRIPTION

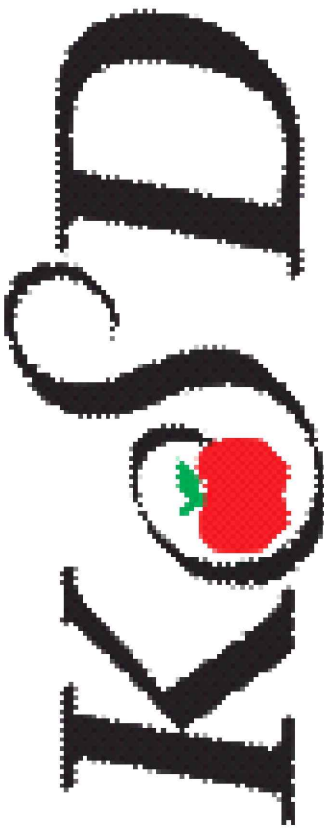
WIRE LEGEND					
TYPE	QTY	DESCRIPTION	MANUFACTURER	NON PLENUM	PLENUM
AD	X	AUDIO (DIGITAL MIC)	POLYCOM	CUSTOM	CUSTOM
AL	X	AUDIO (LINE)	BELDEN	9451	9451P
AM	X	AUDIO (MICROPHONE)	BELDEN	9451	9451P
AN	X	AUDIO (NETWORK OVER CAT CABLE)	GEPCO	-	2131611E
AP	X	MULTIPAIR AUDIO	BELDEN	1817R	1817R
CAT	X	DIGITAL MEDIA CAT CABLE	CRESTRON	DM-CBL-NP-SP500	DM-CBL-P-SP500
CG	X	CONTROL (GENERAL)	BELDEN	9751	92743
CN	X	DATA	BELDEN	1583A	1583A
CP	X	CONTROL (NETWORK)	CRESTRON	CRESNET	CRESNET-P
CQ	X	QUICK MEDIA SIAMESE CABLE	CRESTRON	CRES-CAT-QM-NP	CRES-CAT-QM-P
CR	X	CONTROL (IR)	BELDEN	9451	9451P
CS	X	CONTROL (SERIAL)	BELDEN	9451	9451P
D	X	DATA	BELDEN	1583A	1583A
DM	X	DIGITAL MEDIA RG STP CABLE	CRESTRON	DM-CBL-RG-NP-SP500	DM-CBL-RG-P-SP500
DVI	X	DVI MOLDED CABLE	VARIES	-	-
EXT(X)	X	EXTRON MOLDED CABLE	EXTRON	(X) DENOTE NUMBER	-
IM	X	PRODUCTION INTERCOM	WEST PENN	D-510	D-510
HDMI	X	HDMI MOLDED CABLE	VARIES	-	-
LNK(X)	X	MANUFACTURER LINK CABLE	VARIES	1583A	1583A
P	X	LOW VOLTAGE POWER	BELDEN	8461	8461
R	X	RGBHV	LIBERTY	RGBSC	RGBSC-PLN
SL	X	SPEAKER (8 OHM) LONG	WEST PENN	C-210	C-210
SH	X	SPEAKER (8 OHM) SHORT	BELDEN	5100UE	5100UE
SZ	X	SPEAKER (70 VOLT)	BELDEN	5300UE	5300UE
T	X	TELEPHONE/DATA	BELDEN	1583A	1583A
VS	X	COMPOSITE VIDEO (SHORT)	BELDEN	1506A	1506A
VL	X	COMPOSITE VIDEO (LONG)	BELDEN	1694A	1694A
VN	X	VIDEO NETWORK	GEPCO	-	10GX32F
VD(X)	X	VIDEO ADAPTER	VARIOUS	(X) DENOTE NUMBER	-
Y	X	S-VIDEO (Y/C)	BELDEN	QTY (2) 1505A	QTY (2) 1506A

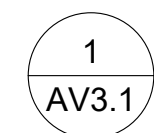
1328 - 117TH DRIVE SE, LAKE STEVENS, WA 98258
CONTACT: JOHN R. HARDWICK - PHONE: 206-714-4003

REV DATE:	REV #1	REV #2	REV #3	REV #4	REV #5

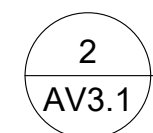
DATE:	06-24-19
JOB:	06-0519
FILE:	
DRAWN:	JRH
CHECKED:	

KELSO HIGH SCHOOL
SCHROEDER FIELD
SOUND SYSTEM REPLACEMENT
ROOF PLAN

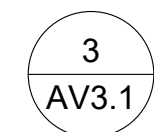
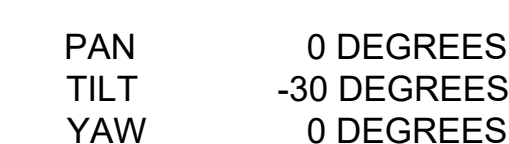




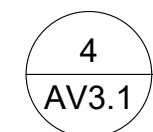
NONE



NO SCALE



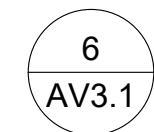
NONE



NONE



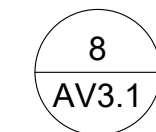
NONE



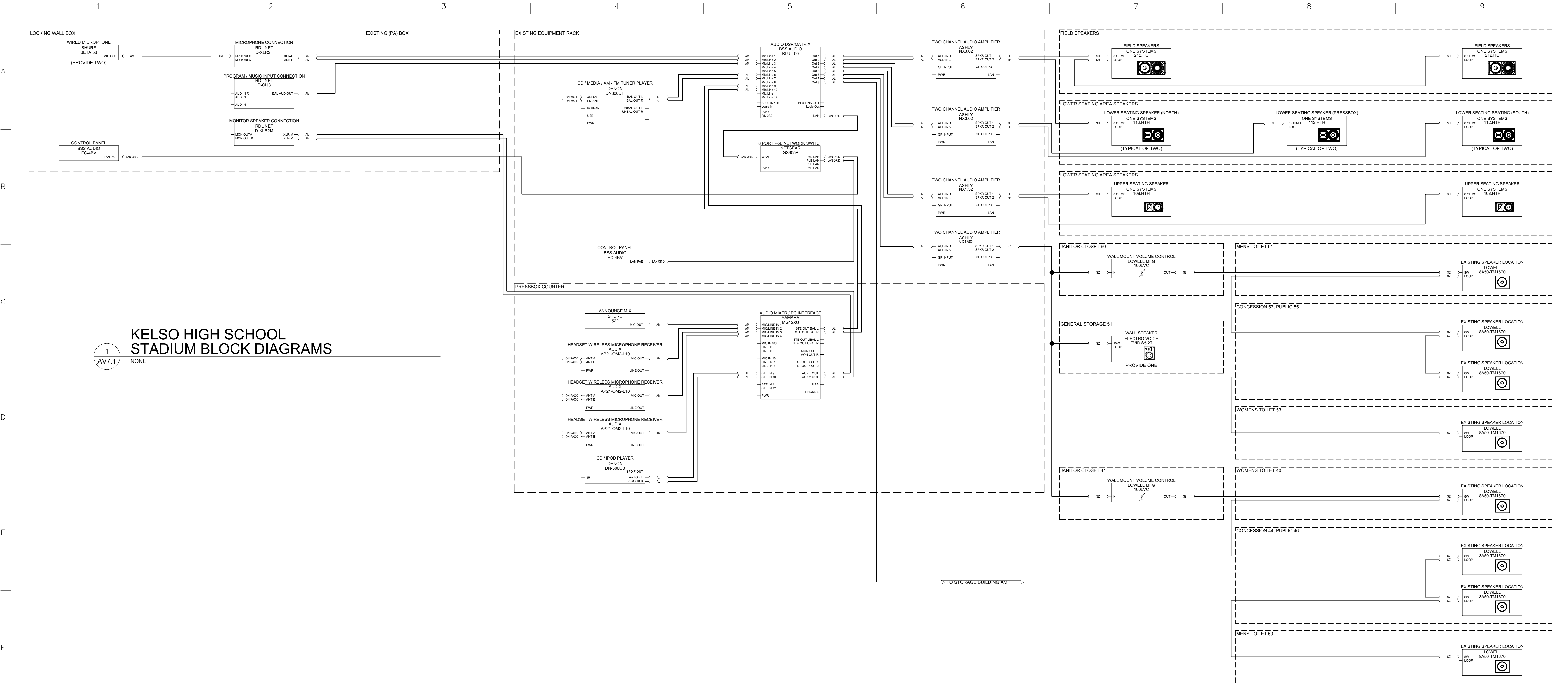
NONE



NONE

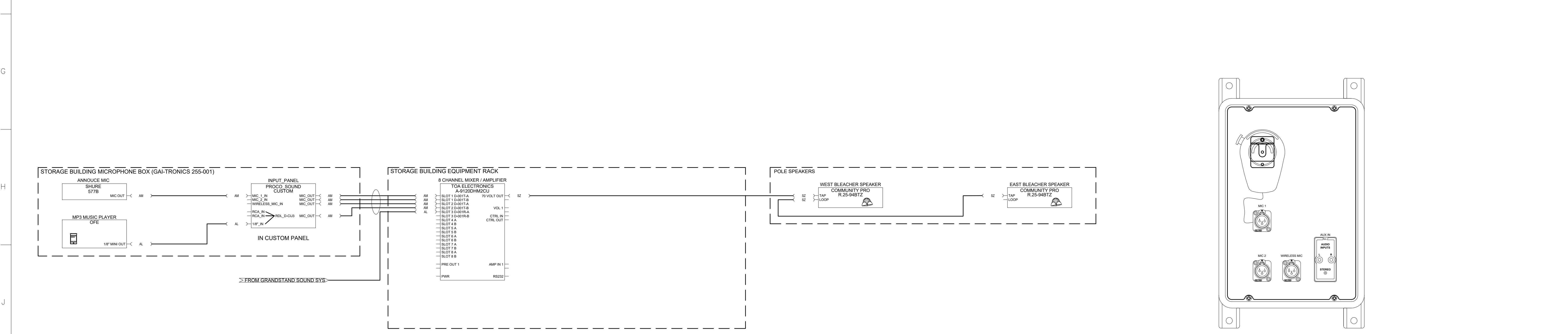


NONE



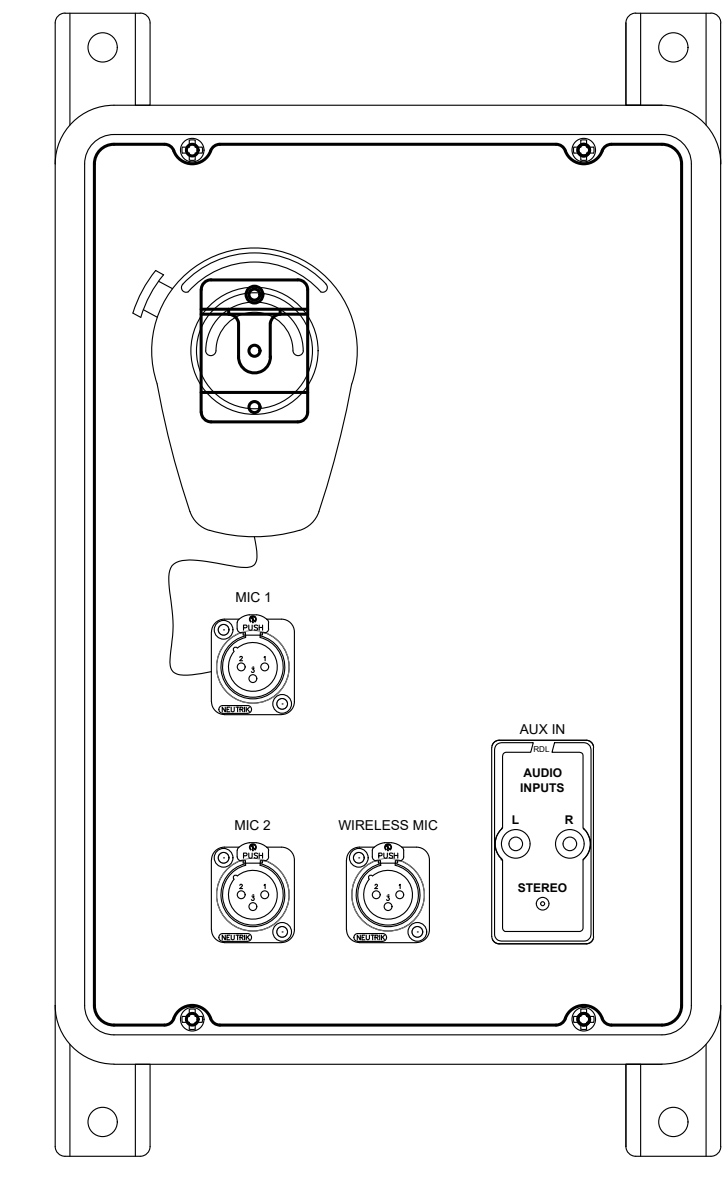
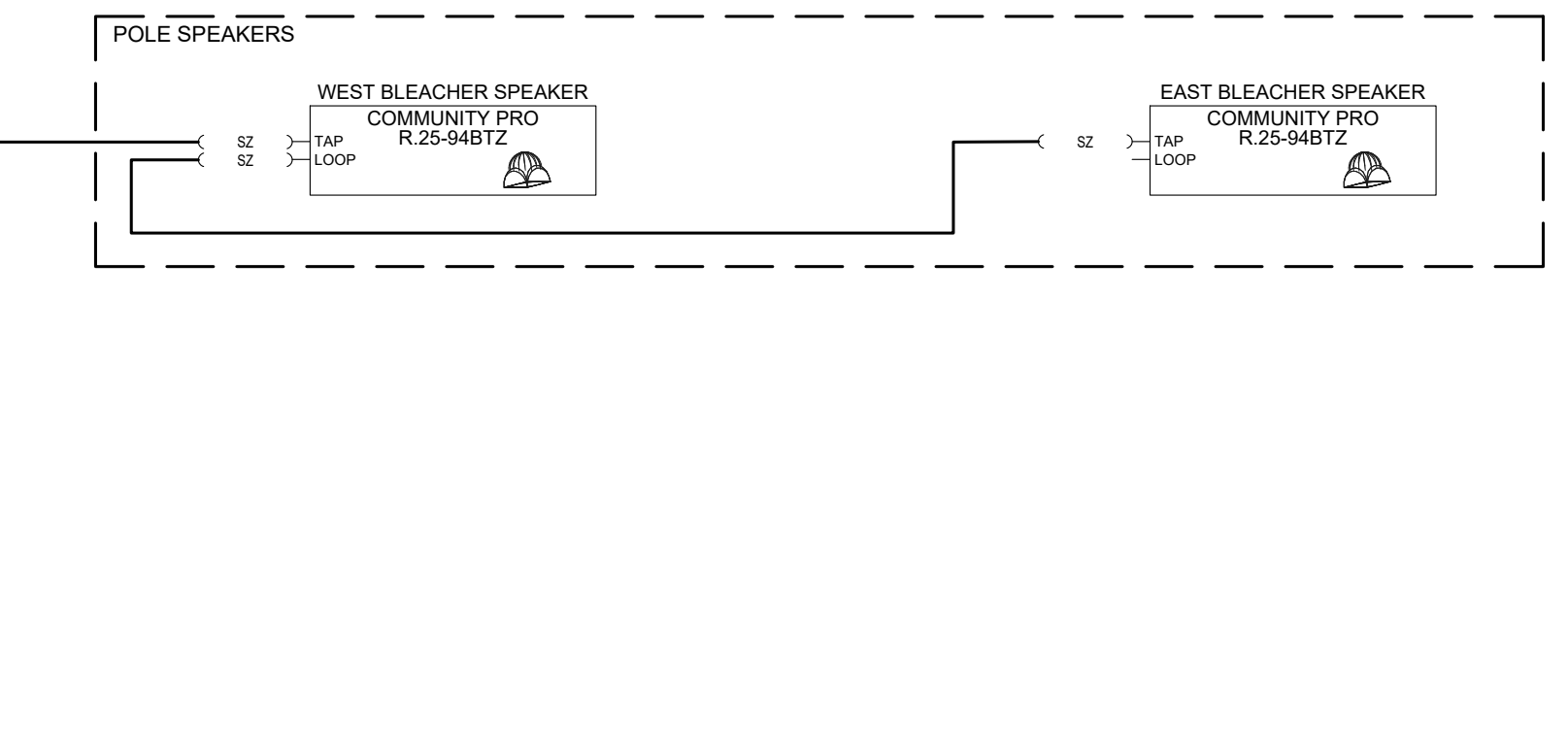
**KELSO HIGH SCHOOL
STADIUM BLOCK DIAGRAMS**

1
AV7.1
NONE



**KELSO HIGH SCHOOL
EAST FIELD BLOCK DIAGRAMS**

2
AV7.1
NONE



**KELSO HIGH SCHOOL
STORAGE BUILDING INPUT BOX**

3
AV7.1
NONE

MBF Audiovisual & Acoustical Consulting
1328 - 117TH DRIVE SE, LAKE STEVENS WA 98258
CONTACT: JOHN R. HARDWICK - PHONE: 206-714-4003

REV DATE:	REV #1	REV #2	REV #3	REV #4	REV #5

DATE:	06-24-19
JOB:	06-0519
FILE:	
DRAWN:	JRH
CHECKED:	

**KELSO HIGH SCHOOL
SCHROEDER FIELD
SOUND SYSTEM REPLACEMENT
BLOCK DIAGRAMS**

KOSD

AV7.1