



BlueCross BlueShield  
of Illinois

# 90DayMyWay

## CHOOSE HOME DELIVERY OR PHARMACY PICKUP

**SWITCH TO A 90-DAY SUPPLY OR YOU MAY  
PAY MORE FOR YOUR MEDICINE.<sup>1</sup>**

### **WE CAN HELP YOU MAKE THE SWITCH TO A 90-DAY SUPPLY.**

Blue Cross and Blue Shield of Illinois is offering 90DayMyWay<sup>®</sup> through our pharmacy benefit manager, Prime Therapeutics. With 90DayMyWay, you can get a 90-day supply of your long-term medicines from an Extended Supply Network pharmacy or have them delivered to you with AllianceRx Walgreens Prime.

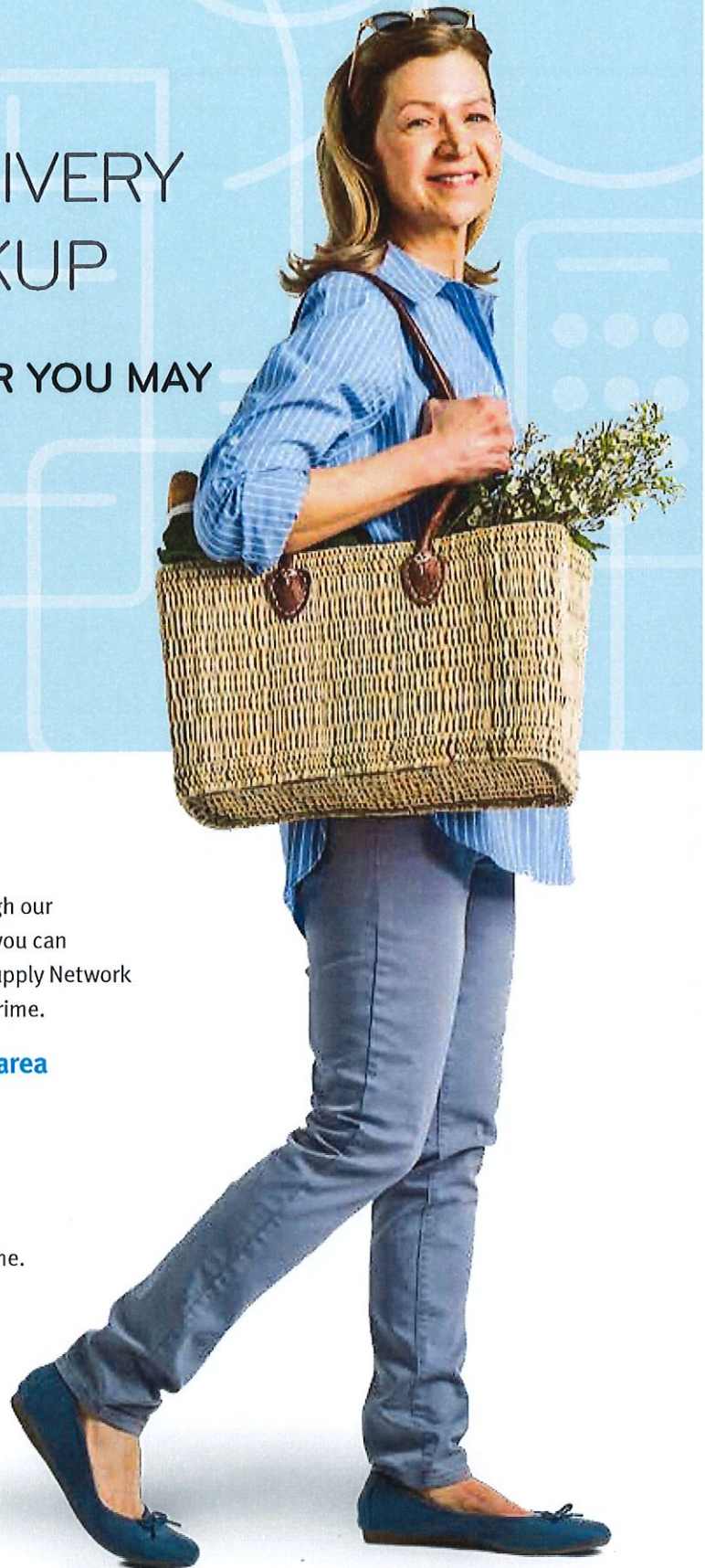
#### **Choose an extended supply network pharmacy in your area**

- Thousands of in-network pharmacies available.
- Pick up your medicine when it's most convenient for you.
- Talk face-to-face with a pharmacist (during business hours).

#### **AllianceRx Walgreens Prime home delivery pharmacy**

- Get 24/7 support—talk with a member of the pharmacy team anytime.
- Order from home, spend less time waiting in line.
- Standard shipping is always free.<sup>2</sup>

*continued*



MAKE THE SWITCH



HOME DELIVERY  
RETAIL PHARMACY

## FREQUENTLY ASKED QUESTIONS ABOUT 90DAYMYWAY

### What is 90DayMyWay?

90DayMyWay is a program that gives you more choices in how you get your long-term medicines. When you switch to a 90-day supply of your medicines, you can then get your prescriptions at a retail pharmacy or use AllianceRx Walgreens Prime for home delivery.

### How do I switch to a retail pharmacy?

Ask your doctor to switch your prescriptions to a 90-day supply (or, your pharmacist can ask your doctor to change your prescription).

### How do I switch to home delivery?

1. Go to [alliancerxwp.com/home-delivery](http://alliancerxwp.com/home-delivery). Follow the instructions to create an account, or
2. Call 877.357.7463.

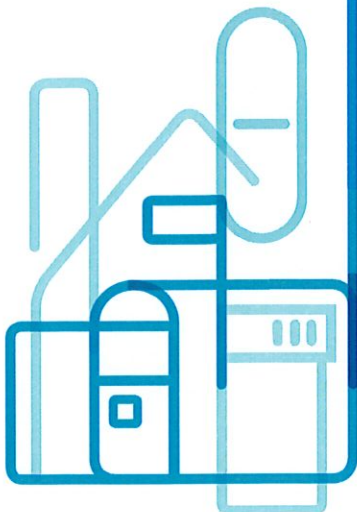
Once you've signed up for home delivery, contact your doctor to switch your prescription(s) to AllianceRx Walgreens Prime.

### What are long-term medicines?

Long-term medicines are those you take regularly to treat chronic conditions such as high cholesterol, high blood pressure, asthma, depression or anxiety.

### How do I find a network pharmacy?

Visit [MyPrime.com](http://MyPrime.com) to find a pharmacy that offers 90-day supplies.



1 Coverage is always subject to the exclusions and limitations noted in your benefit plan. See your plan materials for details.

2 Within the United States.

Blue Cross and Blue Shield of Illinois is a Division of Health Care Service Corporation, a Mutual Legal Reserve Company, an Independent Licensee of the Blue Cross and Blue Shield Association.

Prime Therapeutics LLC is a separate pharmacy benefit management company contracted by Blue Cross and Blue Shield of Illinois (BCBSIL) to provide pharmacy benefit management and related other services. BCBSIL, as well as several independent Blue Cross and Blue Shield Plans, has an ownership interest in Prime Therapeutics.

Prime Therapeutics has an ownership interest in AllianceRx Walgreens Prime, a central specialty and home delivery pharmacy.

[Facebook.com/PrimeTherapeutics](https://www.facebook.com/PrimeTherapeutics) [Twitter.com/Prime\\_PBM](https://twitter.com/Prime_PBM) [LinkedIn.com/company/prime-therapeutics](https://www.linkedin.com/company/prime-therapeutics) [YouTube.com/PrimeTherapeutics](https://www.youtube.com/PrimeTherapeutics)