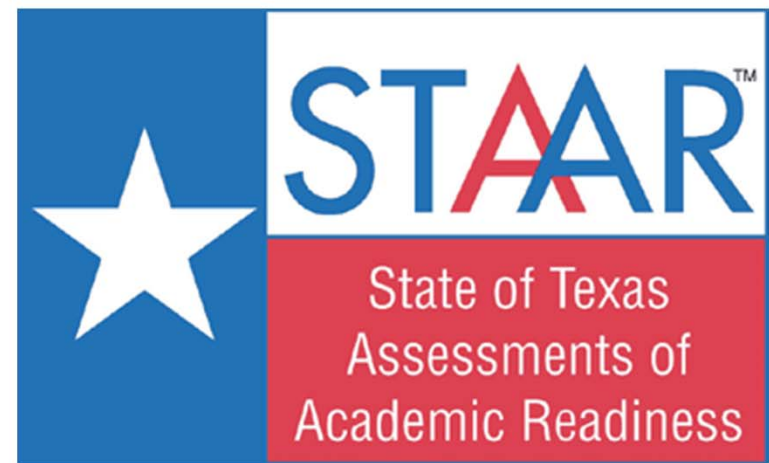
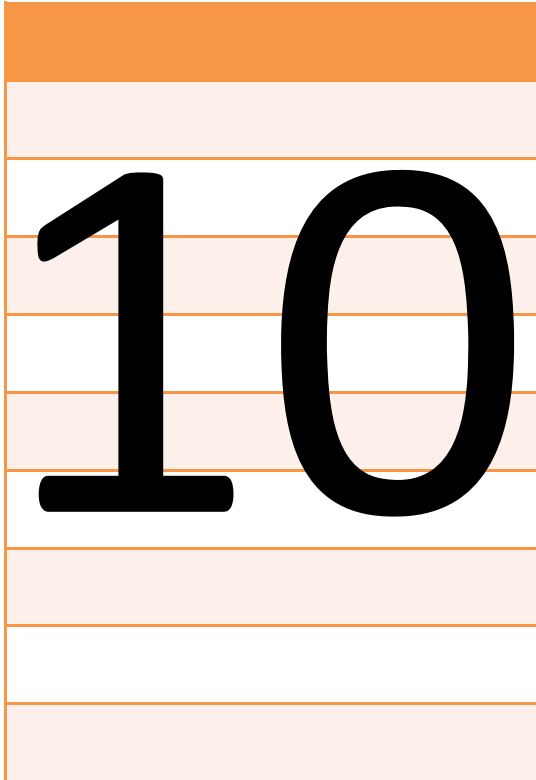


ENGLISH LANGUAGE ARTS



Short Answer Questions



Goes beyond
literal reading of
the text

Students must be able to infer.

in·fer  *verb* \in-'fər\

in-ferred | **in-fer-ring**

Definition of INFER



transitive verb

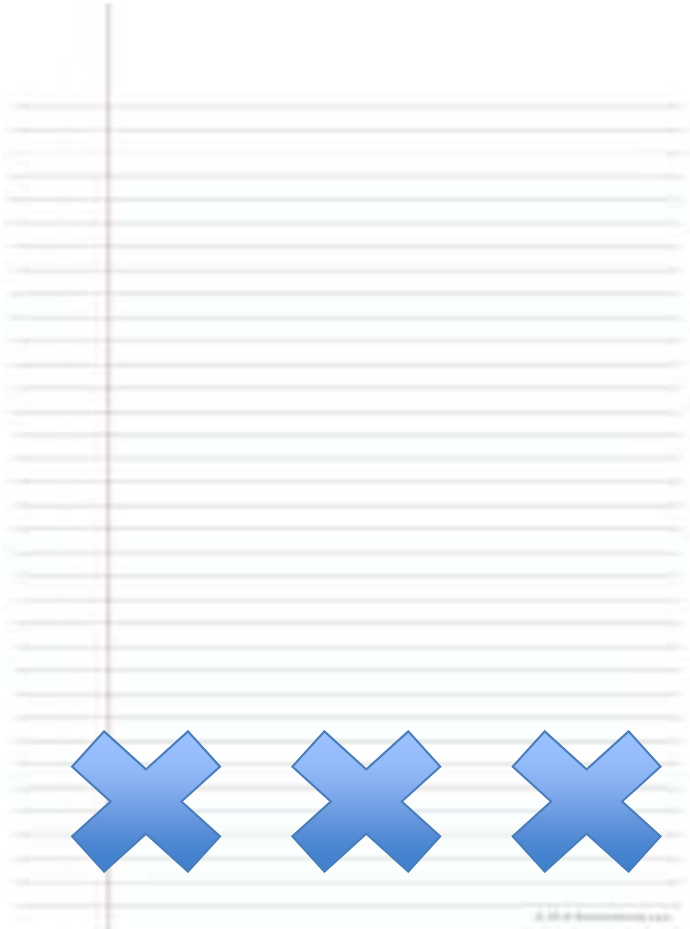
- 1** : to **derive** as a conclusion from facts or **premises** <we see smoke and *infer* fire — L. A. White> — compare **IMPLY**
- 2** : **GUESS, SURMISE** <your letter ... allows me to *infer* that you are as well as ever — O. W. Holmes †1935>
- 3 a** : to involve as a normal outcome of thought
b : to point out : **INDICATE** <this doth *infer* the zeal I had to see him — Shakespeare> <another survey...*infers* that two-thirds of all present computer installations are not paying for themselves — H. R. Chellman>
- 4** : **SUGGEST, HINT** <are you *inferring* I'm incompetent?>

infer

Related to INFER

Synonyms: conclude, decide, deduce, derive, extrapolate, gather, judge, make out, reason, understand, draw a conclusion

Composition

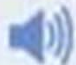


26

STAAR Writing Rubrics

- Organization/Progression
- Development of Ideas
- Use of Language/Conventions

Students must be concise.

con·cise  *adj* \kən-'sīs\

Definition of CONCISE



: marked by **brevity** of expression or statement : free from all elaboration and superfluous detail <a *concise* report> <a *concise* definition>

Antonyms: circuitous, circumlocutory, diffuse, long-winded, prolix, rambling, verbose, windy, wordy

Students must be precise.

pre-cise  *adj* \pri-'sīs\

Definition of PRECISE




1 : exactly or sharply defined or stated

2 : minutely exact

3 : strictly conforming to a pattern, standard, or convention

4 : distinguished from every other <at just that *precise* moment>

— **pre-cise-ness** *noun*

 See [precise](#) defined for English-language learners »

See [precise](#) defined for kids »

Origin of CONCISE

Latin *concisus*, from past participle of *concidere* to cut up,
from *com-* + *caedere* to cut, strike

First Known Use: circa 1590

Origin of PRECISE

Middle English, from Middle French *precis*, from Latin
praecisus, past participle of *praecidere* to cut off, from
prae- + *caedere* to cut

First Known Use: 15th century

Students must have stamina.

3





Contact

Stephanie Heinchon

512.919.5344

stephanie.heinchon@esc13.txed.net

Cindy Hamilton

512.919.5146

cindy.hamilton@esc13.txed.net

MATHEMATICS

Mathematics

- NEW Math TEKS

(Draft Docs open for comment:

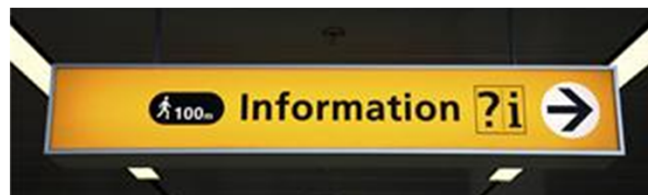
<http://www.tea.state.tx.us/index2.aspx?id=2147499971>)

- STAAR Math reference materials for 3-8
(Graph paper has arrived!)
- STAAR Sample Items



Mathematics

- STAAR Q & A posted – note info on above-grade level students
(<http://www.txetests.com/faqs/index.asp>)
- Released TAKS tests grades 3-8 removed
- Fall Mathematics PD Schedule is now available. (<http://www5.esc13.net/math/>)
- The MSTAR Universal Screener fall window is open August 29, 2011 – September, 27, 2011.
Project Share Group: (<http://www.epsilon.com/grp/103640>)



Mathematics



- Enroll/resend student data to upload in to TMSDS
(<http://www.tmsds.org>)
- Register for fall workshops
- Keep checking TEA website
- Update TRC info (if applicable)

Contact

Mary Headley

512.919.5231

mary.headley@esc13.txed.net

Susan Hemphill

512.919.5360

susan.hemphill@esc13.txed.net

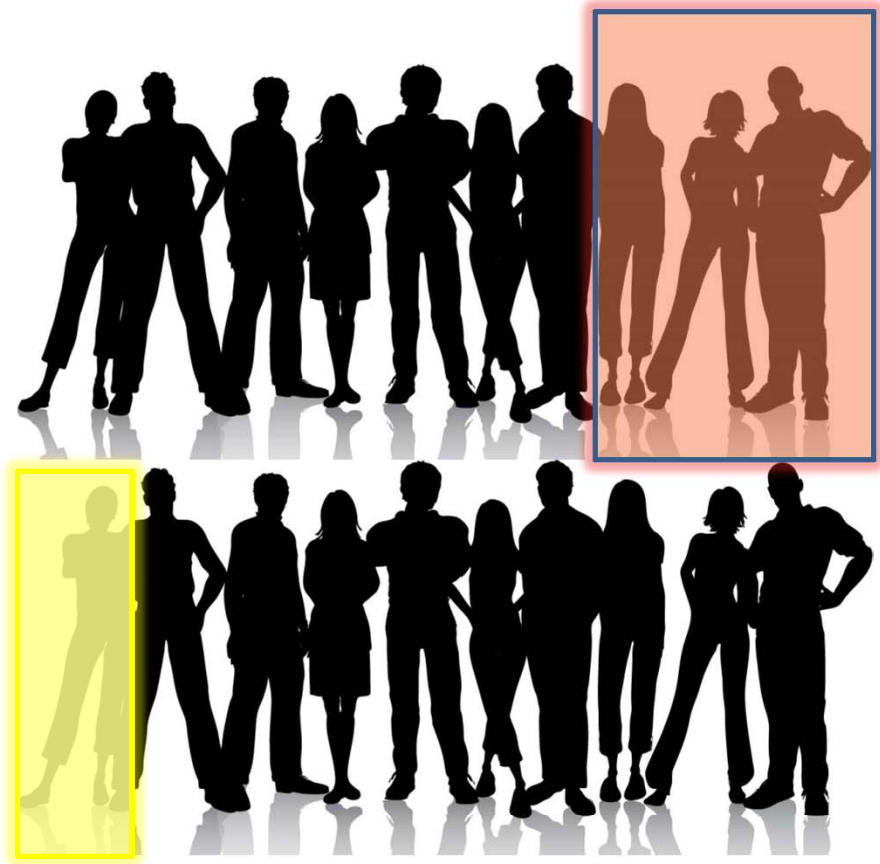
Emily Gray

512.919.5350

emily.gray@esc13.txed.net

SCIENCE

A High School Science Scenario



2011 – 2012 Freshman

~Most are enrolled in Biology~

STAAR Biology Blueprint with TEKS
www.esc13.net/STAAR



Reporting Categories	Number of Standards		Number of Questions	
Reporting Category 1: Cell Structure and Function	Readiness Standards <i>B.4B, 4C, 5A, 9A</i>	4	11	
	Supporting Standards <i>B.4A, 5B, 5C, 5D, 9D</i>	5		
	Total	9		
Reporting Category 2: Mechanisms of Genetics	Readiness Standards <i>B.6A, 6E, 6F</i>	3	11	
	Supporting Standards <i>B.6B, 6C, 6D, 6G, 6H</i>	5		
	Total	8		
Reporting Category 3: Biological Evolution and Classification	Readiness Standards <i>B.7A, 7E, 8B</i>	3	10	
	Supporting Standards <i>B.7B, 7C, 7D, 7F, 7G, 8A, 8C</i>	7		
	Total	10		
Reporting Category 4: Biological Processes and Systems	Readiness Standards <i>B.10A, 10B</i>	2	11	
	Supporting Standards <i>B.9B, 9C, 10C, 11A</i>	4		
	Total	6		
Reporting Category 5: Interdependence within Environmental Systems	Readiness Standards <i>B.11D, 12A, 12C, 12F</i>	4	11	
	Supporting Standards <i>B.11B, 11C, 12B, 12D, 12E</i>	5		
	Total	9		
Readiness Standards	Total Number of Standards	16	60%–65%	32–35
Supporting Standards	Total Number of Standards	26	35%–40%	19–22
Total Number of Questions on Test			54 Multiple Choice	

Italicized TEKS were not tested on TAKS.

Adapted from TEA STAAR Blueprints and Assessed Curriculum

12/03/2010

Mr. Bala's Biology Class ~Instructional View~

Student Groups

- 16 True Freshman
- 1 Repeating Freshman
- 3 Sophomores



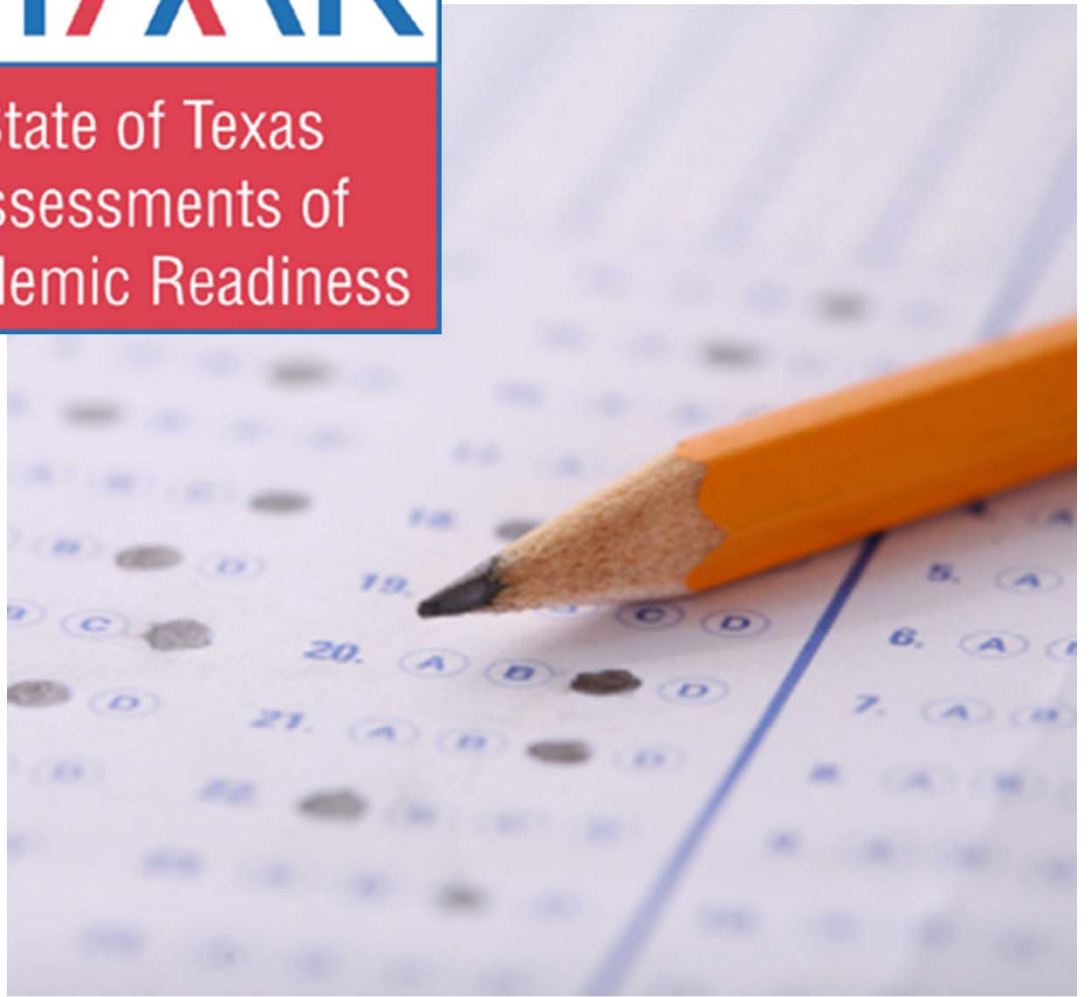
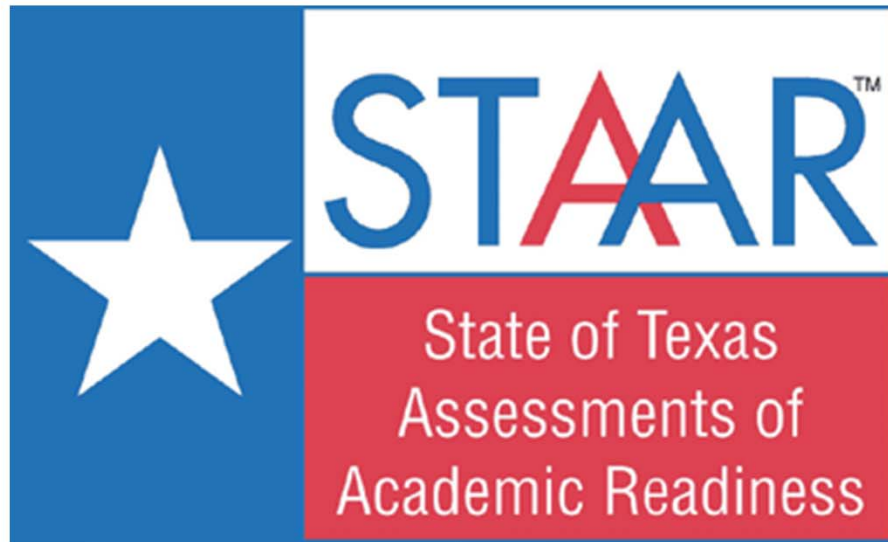
TEKS

- Biology



State Assessment

- 16 True Freshman – STAAR
- 1 Repeating Freshman – None this year
- 3 Sophomores - TAKS



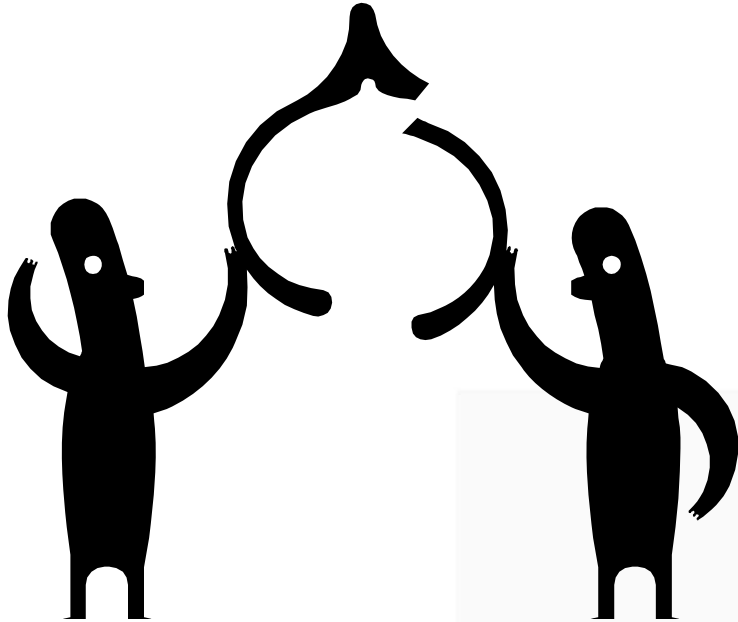
Highlights

STAAR

- Biology SEs
 - Readiness and Supporting
- 4 Reporting Categories
 - process skills embedded
- 4 hour time limit
- Embedded Reference Materials
- Must count as 15% of course grade
- Part of student graduation requirement

Grade 10 Science

- Biology SEs, IPC SEs
- 5 Objectives
 - process skills separate
 - No time limit
- Formula Chart
- Does not affect course grade
- Not a part of graduation requirement, but can be used as an indicator for Exit Level performance



Keys to Classroom Success

- Instructional Considerations
- Resource Considerations
- Logistical Considerations



Points to Consider

- Review
 - How reviewing, including IPC SEs
- Ongoing Assessment
 - How benchmarking?
- Resources
 - How materials are chosen
 - How materials are used / integrated

Points to Consider

- Communication
 - Time for purposeful collaboration
- Assessment Logistics
 - How addressing the time between assessments



Contact

Jennifer Jordan-Kaszuba

512.919.5368

jennifer.jordan-kaszuba@esc13.txed.net

Lori Reemts

512.919.5359

lori.reemts@esc13.txed.net