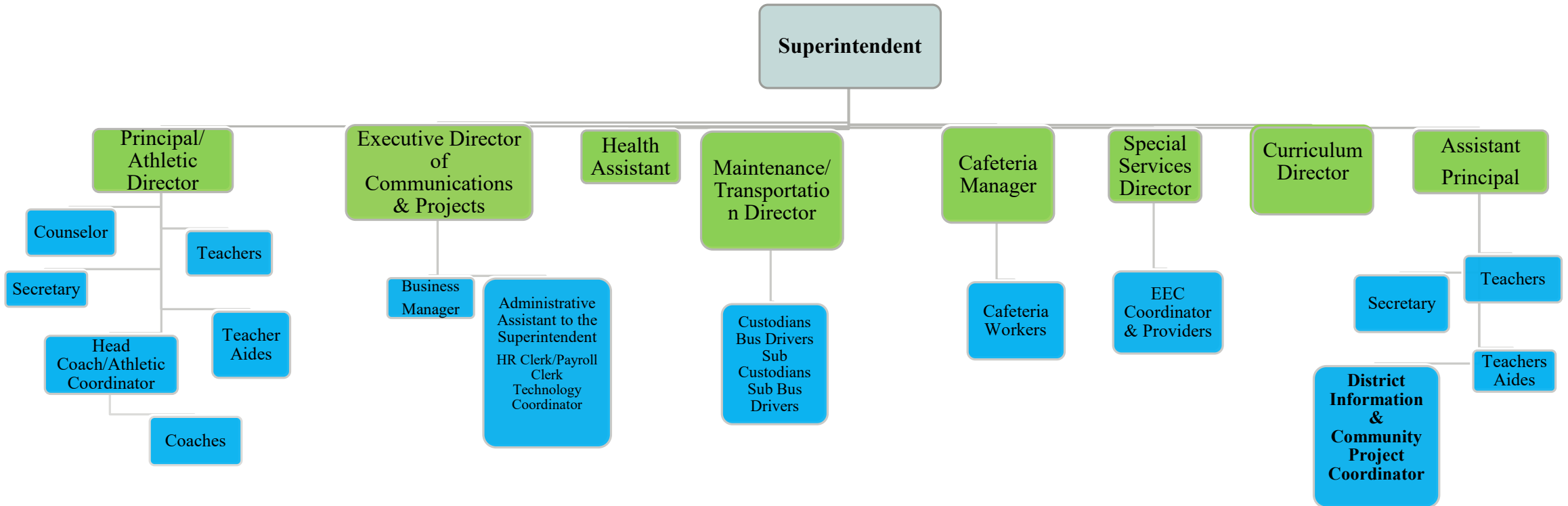


# BURKEVILLE ISD

## Organizational Chart & Emergency Line of Succession Evaluation of Responsibility



\*\*In the event of the Superintendent's absence, disability, or unavailability in a crisis or emergency situation:

- 1) Principal will assume authority of Superintendent and leadership of the district until Superintendent becomes available or the Board Appoints another leader.
- 2) If the Principal is unavailable or incapacitated under these conditions the Assistant Principal will fill this position.

Green-evaluations by Supt.  
Blue-evaluations by campus principal or supervisor

Revised: 10/22/2019