



2016 - 2017 • Accountability At-a-Glance • Sylvan Hills High School

Contact Information

Sylvan Hills High School | Pulaski County Special School District

Principal: Tracy Allen | Superintendent: Charles McNulty

484 Bear Paw RD Sherwood, AR 72120-

<http://www.pcssd.org> | (501) 833-1100

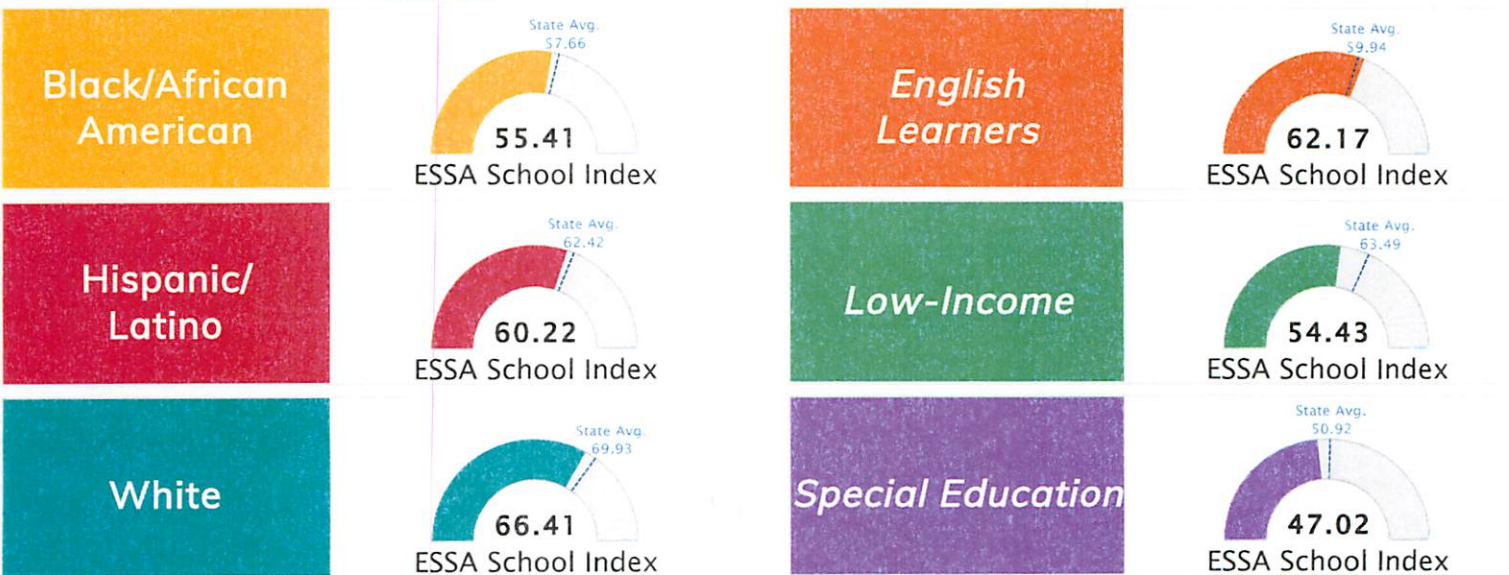
Student Information

Grades	9 - 12	Total Enrollment	1,422
Black	42.55 %	English Learners	2.74 %
Hispanic	5.41 %	Low-Income	43.81 %
White	47.05 %	Special Education	13.29 %

Public School Rating Score (State Accountability: A-F Letter Grade)



School Performance on the ESSA School Index Score (Federal Accountability)



Note: Full color represents score

Prepared by the Arkansas Department of Education



2017 ESSA School Index: Overview

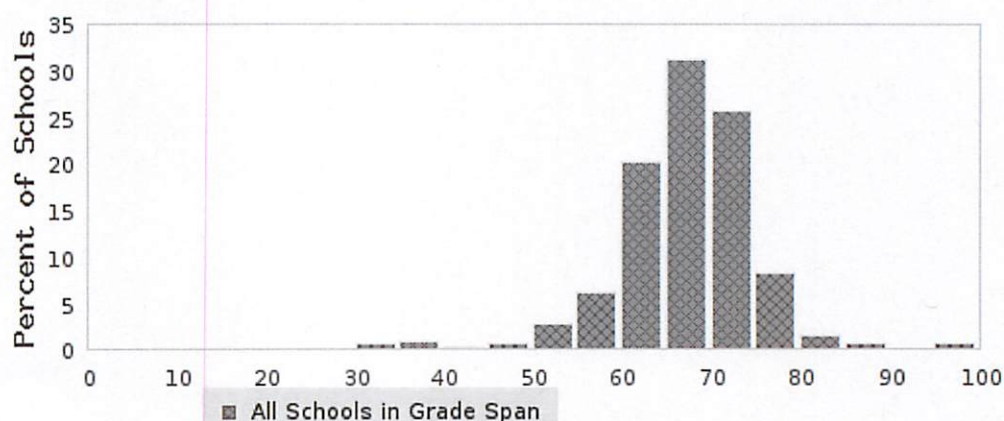
Overall ESSA Index
Score

61.27

6003128 - SYLVAN HILLS HIGH SCHOOL
6003000 - PULASKI COUNTY SPECIAL SCHOOL DISTRICT

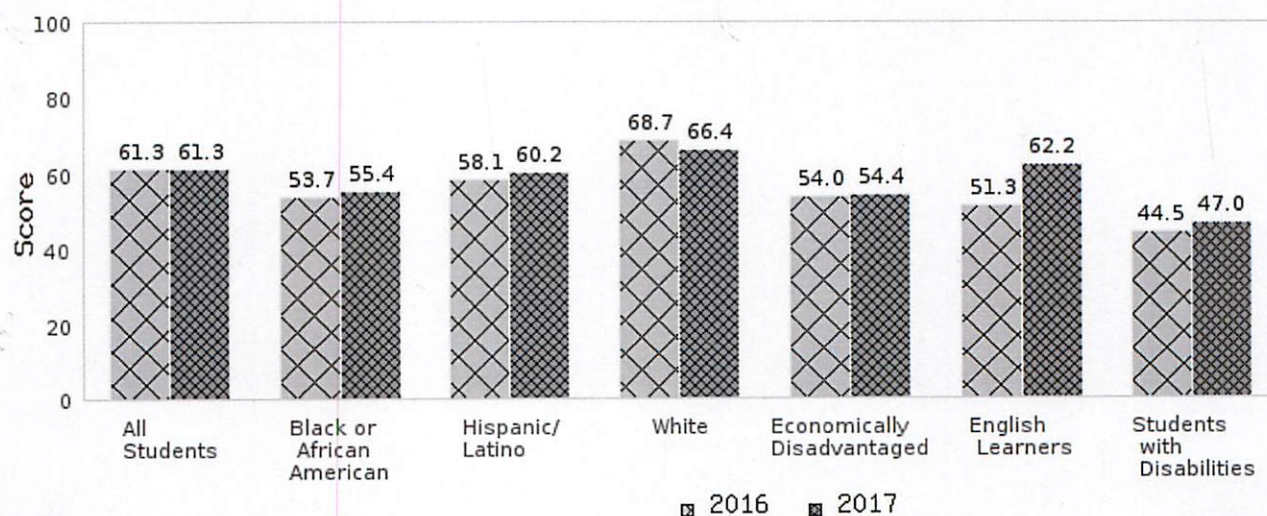
Grade Range	9 - 12
Grade Span	3 - High School Level
Enrollment	1422
Poverty Rate	43.81

State Distribution of Overall School ESSA Index Scores



The score of 61.27 falls in the 60-65 bar of the state distribution of the overall ESSA index score for the high school level grade span.

Two Year School ESSA Index Scores By Subgroup





2017 ESSA School Index: Overview

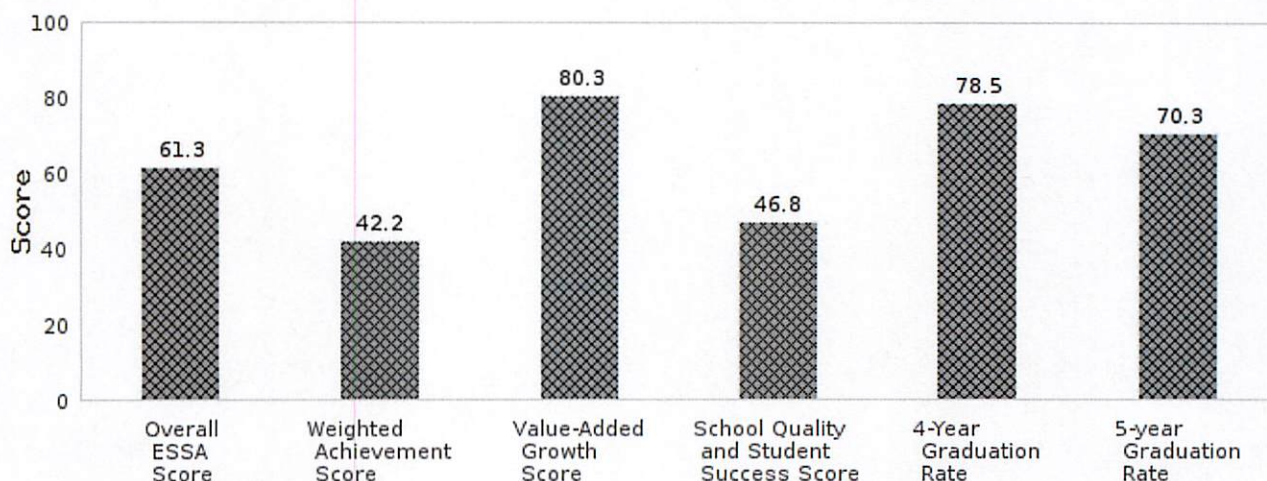
Overall ESSA Index
Score

61.27

6003128 - SYLVAN HILLS HIGH SCHOOL
6003000 - PULASKI COUNTY SPECIAL SCHOOL DISTRICT

Grade Range	9 - 12
Grade Span	3 - High School Level
Enrollment	1422
Poverty Rate	43.81

ESSA Indicator Scores



Weighted Achievement Score 42.22

Schools earn a percentage of points for student achievement. Schools earn more points per student in successively higher achievement levels. Schools can earn a score above 100 when more students achieve at the highest achievement level compared to the lowest level.

- Weighted Achievement is weighted at 35% of the ESSA School Index

• For details:

<https://tinyurl.com/y7ujhqr9>

Value-Added Growth Score 80.3

Schools earn points based on students' value-added growth scores in the content areas of math and English language arts, as well as English language proficiency (where applicable).

- Growth is weighted at 50% (non-high schools) or 35% (high schools) of the ESSA school index.

• For details:

<https://tinyurl.com/y7ujhqr9>

School Quality and Student Success Score 46.84

The SQSS indicator combines measures of student engagement, readiness, completion and success criteria.

- SQSS is weighted at 15% of the ESSA school index.

• For details:

<https://tinyurl.com/y7ujhqr9>

4-Year Graduation Rate 78.5

Schools earn a percentage of points based on the four-year and five-year adjusted cohort graduation rate. The four-year rate is weighted at 10% of the overall ESSA Index Score.

The five-year rate is weighted at 5% of the overall ESSA Index Score.

• For details:

<https://tinyurl.com/y7ujhqr9>

5-Year Graduation Rate 70.29