



2016 - 2017 • Accountability At-a-Glance • Joe T. Robinson Middle School

Contact Information

Joe T. Robinson Middle School | Pulaski County Special School District

Principal: Yaa Appiah-McNulty | Superintendent: Charles McNulty

21001 Highway 10 Little Rock, AR 72223-

<http://www.pcssd.org> | (501) 868-2410

Student Information

Grades	6 - 8	Total Enrollment	441
Black	29.48 %	English Learners	6.35 %
Hispanic	7.26 %	Low-Income	38.55 %
White	58.96 %	Special Education	9.52 %

Public School Rating Score (State Accountability: A-F Letter Grade)

State
Accountability

75.76

Public
School
Rating

B

Rating
Scale

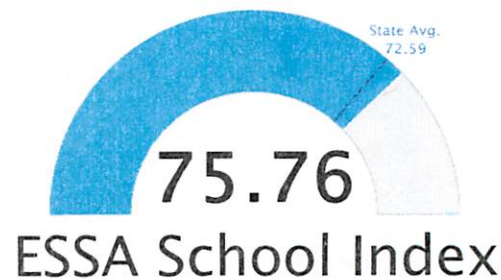
A = 78.37 and Above
B = 72.58 - 78.36
C = 65.93 - 72.57
D = 56.24 - 65.92
F = 0.00 - 56.23

* Alternative Education (AE) program students included in attendance zone for school rating

[Learn More about Public School Rating](#)

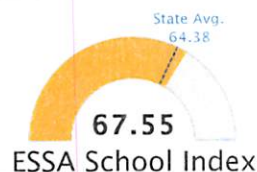
School Performance on the ESSA School Index Score (Federal Accountability)

All Students

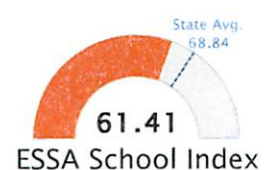


Graph represents where scores fall in comparison to state averages. For more information about the Every Student Succeeds Act and the ESSA School Index, visit arkansased.gov.

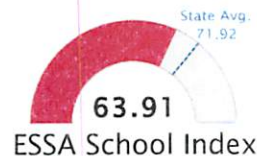
Black/African
American



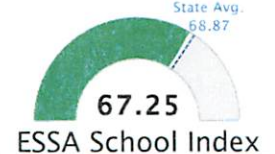
English
Learners



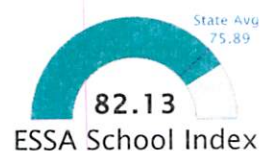
Hispanic/
Latino



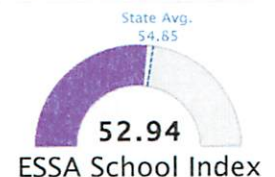
Low-Income



White



Special Education



Note: Full color represents score

Prepared by the Arkansas Department of Education

2017 ESSA School Index: Overview

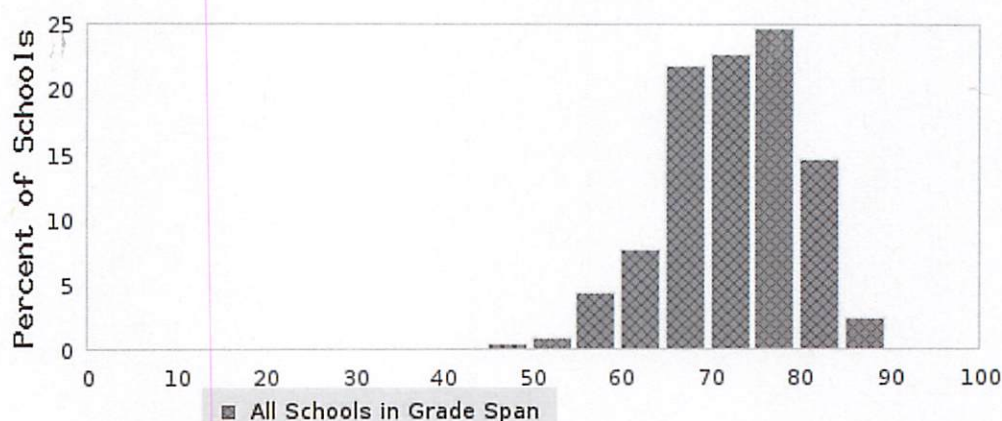
Overall ESSA Index
Score

75.76

6003143 - JOE T. ROBINSON MIDDLE SCHOOL
6003000 - PULASKI COUNTY SPECIAL SCHOOL DISTRICT

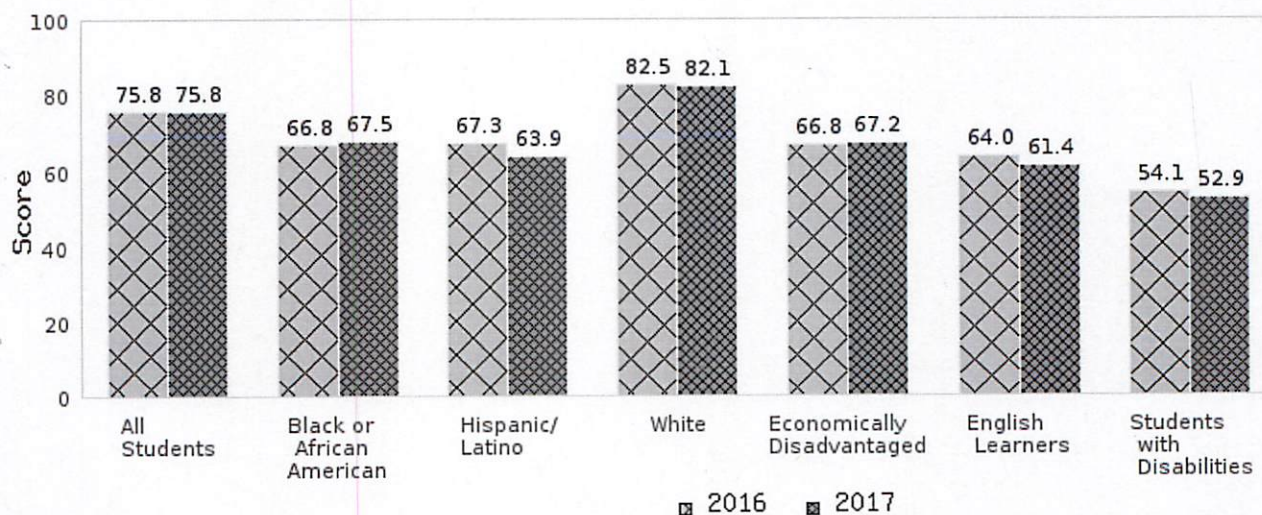
Grade Range	6 - 8
Grade Span	2 - Middle Level
Enrollment	441
Poverty Rate	38.55

State Distribution of Overall School ESSA Index Scores



The score of 75.76 falls in the 75-80 bar of the state distribution of the overall ESSA index score for the middle level grade span.

Two Year School ESSA Index Scores By Subgroup





2017 ESSA School Index: Overview

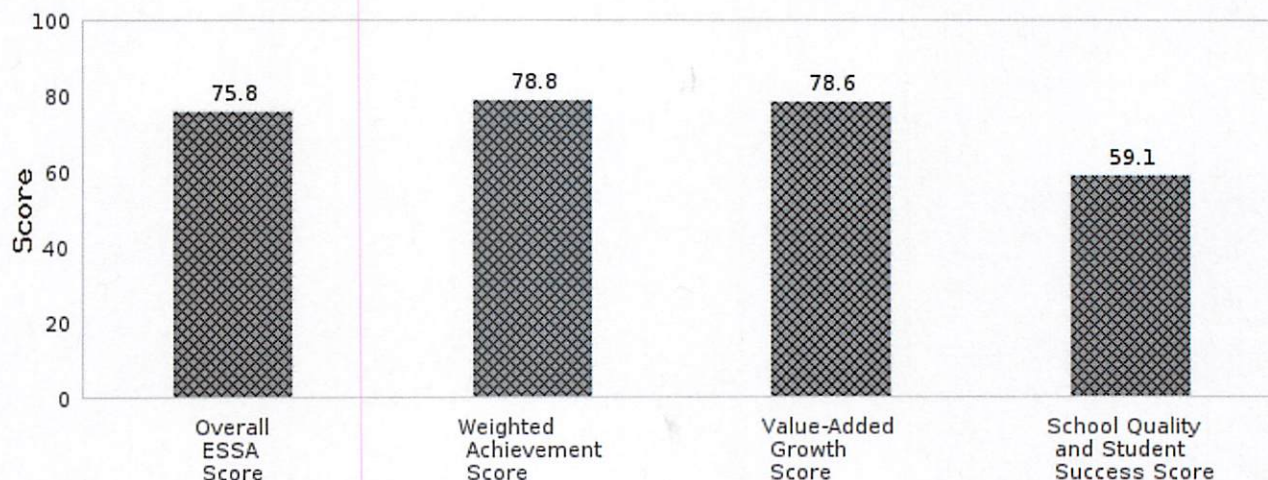
Overall ESSA Index
Score

75.76

6003143 - JOE T. ROBINSON MIDDLE SCHOOL
6003000 - PULASKI COUNTY SPECIAL SCHOOL DISTRICT

Grade Range	6 - 8
Grade Span	2 - Middle Level
Enrollment	441
Poverty Rate	38.55

ESSA Indicator Scores



Weighted Achievement Score 78.83

Schools earn a percentage of points for student achievement. Schools earn more points per student in successively higher achievement levels. Schools can earn a score above 100 when more students achieve at the highest achievement level compared to the lowest level.

- Weighted Achievement is weighted at 35% of the ESSA School Index

• For details:

<https://tinyurl.com/y7ujhqr9>

Value-Added Growth Score 78.61

Schools earn points based on students' value-added growth scores in the content areas of math and English language arts, as well as English language proficiency (where applicable).

- Growth is weighted at 50% (non-high schools) or 35% (high schools) of the ESSA school index.

• For details:

<https://tinyurl.com/y7ujhqr9>

School Quality and Student Success Score 59.07

The SQSS indicator combines measures of student engagement, readiness, completion and success criteria.

- SQSS is weighted at 15% of the ESSA school index.

• For details:

<https://tinyurl.com/y7ujhqr9>