



## 2016 - 2017 • Accountability At-a-Glance • Wilbur D. Mills High School

### Contact Information

**Wilbur D. Mills High School | Pulaski County Special School District**

Principal: Duane Clayton | Superintendent: Charles McNulty

1205 E. Dixon RD Little Rock, AR 72206-

<http://www.pcssd.org> | (501) 490-5700

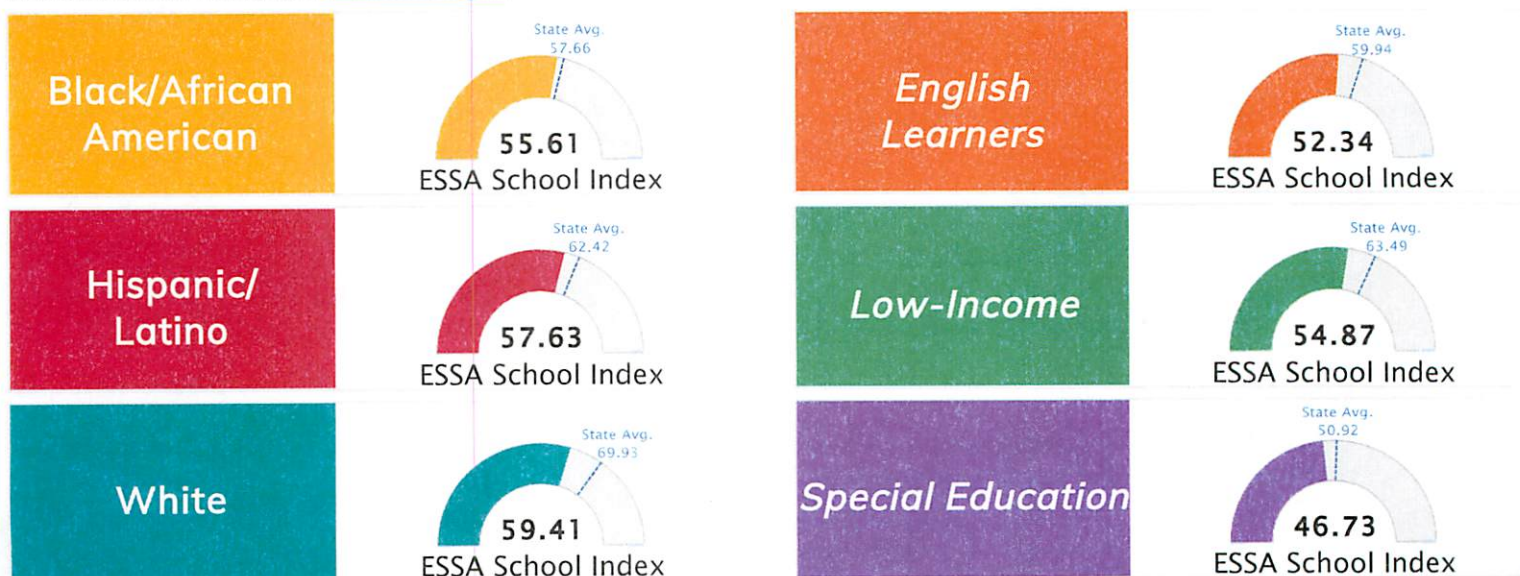
### Student Information

<b>Grades</b>	<b>9 - 12</b>	<b>Total Enrollment</b>	<b>613</b>
Black	62.64 %	English Learners	5.38 %
Hispanic	9.79 %	Low-Income	65.74 %
White	24.96 %	Special Education	11.58 %

## Public School Rating Score (State Accountability: A-F Letter Grade)



## School Performance on the ESSA School Index Score (Federal Accountability)



Note: Full color represents score

Prepared by the Arkansas Department of Education





## 2017 ESSA School Index: Overview

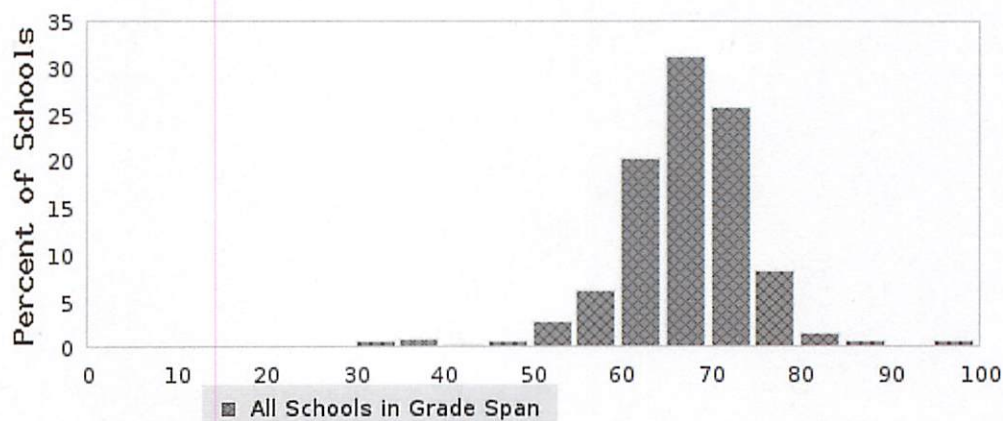
Overall ESSA Index  
Score

**56.79**

6003125 - WILBUR D. MILLS HIGH SCHOOL  
6003000 - PULASKI COUNTY SPECIAL SCHOOL DISTRICT

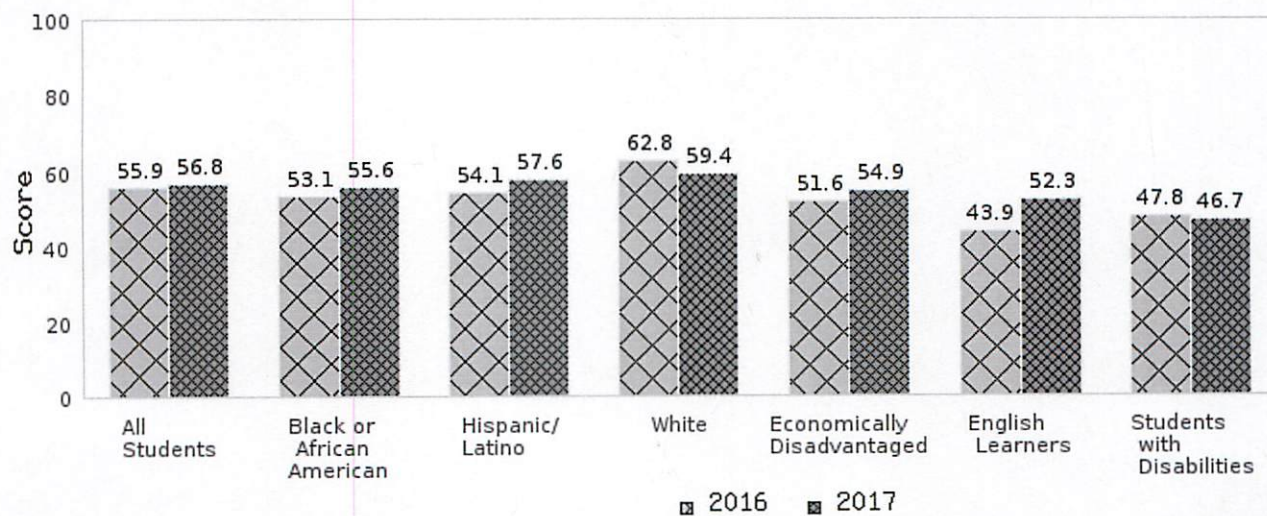
Grade Range	9 - 12
Grade Span	3 - High School Level
Enrollment	613
Poverty Rate	65.74

## State Distribution of Overall School ESSA Index Scores



The score of 56.79 falls in the 55-60 bar of the state distribution of the overall ESSA index score for the high school level grade span.

## Two Year School ESSA Index Scores By Subgroup







## 2017 ESSA School Index: Overview

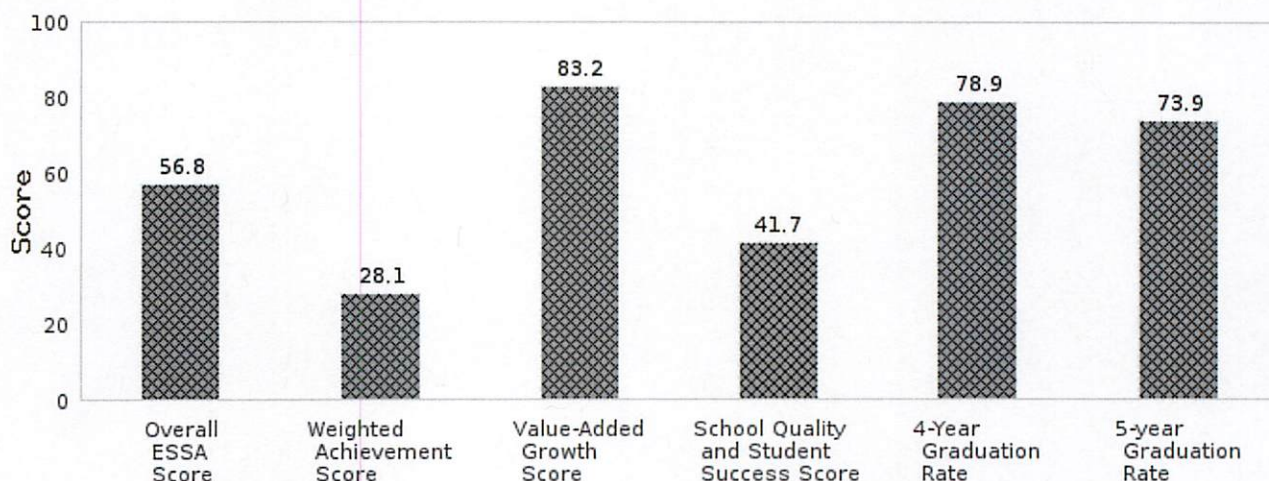
Overall ESSA Index  
Score

**56.79**

6003125 - WILBUR D. MILLS HIGH SCHOOL  
6003000 - PULASKI COUNTY SPECIAL SCHOOL DISTRICT

Grade Range	9 - 12
Grade Span	3 - High School Level
Enrollment	613
Poverty Rate	65.74

## ESSA Indicator Scores



**Weighted  
Achievement  
Score**  
**28.05**

Schools earn a percentage of points for student achievement. Schools earn more points per student in successively higher achievement levels. Schools can earn a score above 100 when more students achieve at the highest achievement level compared to the lowest level.

- Weighted Achievement is weighted at 35% of the ESSA School Index
- For details:  
<https://tinyurl.com/y7ujhqr9>

**Value-Added  
Growth Score**  
**83.25**

Schools earn points based on students' value-added growth scores in the content areas of math and English language arts, as well as English language proficiency (where applicable).

- Growth is weighted at 50% (non-high schools) or 35% (high schools) of the ESSA school index.
- For details:  
<https://tinyurl.com/y7ujhqr9>

**School Quality  
and Student  
Success Score**  
**41.67**

The SQSS indicator combines measures of student engagement, readiness, completion and success criteria.

- SQSS is weighted at 15% of the ESSA school index.
- For details:  
<https://tinyurl.com/y7ujhqr9>

**4-Year  
Graduation Rate**  
**78.89**

Schools earn a percentage of points based on the four-year and five-year adjusted cohort graduation rate. The four-year rate is weighted at 10% of the overall ESSA Index Score.

**5-Year  
Graduation Rate**  
**73.89**

- The five-year rate is weighted at 5% of the overall ESSA Index Score.
- For details:  
<https://tinyurl.com/y7ujhqr9>