

The Open Range

USD 226 District Office
409 School Addition, PO Box 400
620-873-2081

Meade High School
409 School Addition
620-873-2981

Meade Elementary School/Jr High
310 East Grant
620-873-2671

Meade Community Learning Center
147 North Fowler
620-873-2169

Superintendent's Update

Kenneth Harshberger

What's Up with a Health & Wellness Center and the Rec. Mill Levy?

Almost two years ago the idea of developing a modern health and wellness facility came about after a study by the county showed the cost of updating the old Lone Tree Facility might not be financially prudent. That is where the current Meade Wellness Center is located. If the building closes in the future, there will be no wellness center, but according to an Eco Devo information this was a high priority for residents. As a result several people in the community began discussing the idea of developing a facility that would be larger, more modern, inviting, and provide health and wellness opportunities for every age in the community.

For around 18 months a group of interested citizens have been working hard to see if this vision could become a reality. It started with the idea of exploring the development of this type of center through collaboration with Meade USD 226, the City of Meade, the Artesian Valley Health System, and the Meade Recreation Commission. The goal of the committee is:

"To provide a community facility to enhance the health and wellness of the entire community and provide additional space for activities."

For a couple months the committee worked with an area architect, Roger Angel, to get ideas about what a center might look like and get an estimate on the cost. The design went through three drafts, but was created to be efficient by using a metal shell to keep down the cost. The estimated cost was \$1.7 million, but could change with modifications and if building costs change over the next two years. (See page 4 for the design and architect rendering.)

Representatives from the committee then delivered a presentation to all four public entities at **public meetings** to see if each board/council/commission would be willing to approve a MOU (Memorandum of Understanding) to work together. The presentation was also presented to the Meade County Commissioners and to Meade Economic Development. The MOU basically indicated their intent to work collaboratively towards the development of the Meade Health and Wellness Activity Center. It also acknowledged that a detailed agreement would have to be approved by each party to move the project forward. The MOU was approved by **ALL** four public entities.

With the help of an attorney who specializes in working with organizations like this, a partnership agreement was developed that was approved **UNANIMOUSLY** by each of the four public **see Health & Wellness pg. 3**

Fall Homecoming



Friday, Sept. 27 – 6:45 PM

Candidates (L to R): Monica Gleason, Jonothan Unruh, Corbyn Carr, Grant Gillum, Sadie Saucedo, Preston Woodruff, Greyson Haynes, Ali Unruh, Caden Martin, Taran Porter

Rempel Recognized at K-State Ball Game

Last Spring Mike Rempel, MES/MJH Vocal Teacher, was nominated by Mr. Tyler Flavin, principal, for the "Extra Yard For Teachers." Mr. Rempel was a recipient of this recognition and was invited to attend a K-State football game. He was one of 120 teachers from across the state recognized that day during the Wildcat's game against Bowling Green. Recently Mr. Rempel shared with the kids a neat video of his experience down on the field during pre-game. He was elated and it meant a lot to him to be honored like this. This is Mr. Rempel's 35th year of teaching music at the Meade Elementary School. This is a well deserved recognition for a tremendous teacher. CONGRATULATIONS!



MHS Cheerleaders Off to a Busy Start!

The Cheerleaders have been very busy doing their best to “Spread the Spirit” around town since school started! We kicked off the school year with a “Back to School” dance! We had a great turnout, even though the weather didn’t cooperate and we had to move the dance inside! We also did our annual “Paint the Town” night and painted several of our local businesses with spirit slogans to get everyone excited about the upcoming fall sports season! The girls also attended the Spirit Spreader Clinic in Dodge City to learn some new material and stunts! We were very excited to be told by the instructors that our squad “really has it going on”!!

We have continued our “Fan of the Game” prizes each game to the fan who shows the most spirit during the game! Charla Unruh, Jodi DeLong and Lynnette Gonzalez have been our Superfans so far!! For Homecoming Week, we decked the halls of the High School with a little Mardi Gras decor to match our “theme” for the week! We have been busy planning the Homecoming Bonfire, Parade and Pep Rally too! We would like to say “THANK YOU” to the Sheriff’s Office for donating water for our dance, MHS Booster Club and Willow Blooms for donating our Fan of the Game prizes and to the following businesses for allowing us to paint their windows: Meade Thriftway, Pizza Hut, Chuckwagon Truck Stop, U Pump It, Backroom Printing, Eitzen Agency, Love’s, Tops and Tees, Dr. Headrick, Bachman Drug, City of Meade, Meade Learning Center, Berryman Steam Cleaning, Trend’s Salon, Salon 54, Meade County News, Honeycomb Quilts, Clay Kuhns, Attorney and Meade State Bank!

We are looking forward to a fun year of “Spreading the Spirit”! The 2019-20 Cheerleaders are: Alison Unruh, Monica Gleason, Sadie Saucedo, Trinity Woods, Lauren Christiansen, Kyla Trujillo, Meagan Reimer, Karsen Jones, Shelby Christiansen, Harley Norris, Harley Paul, Alyssa Gipson, Kaylee Bunting, Kayla Rocha, Emberlynn Miller, Ryleigh Foster, Ellen Krueger and Sigrid Heringstad. Coaches are Andria Harris and Fallon Haynes.

Mini-Cheer Clinic



The MHS Cheerleaders will host the Mini Cheer Clinic on Monday, Oct. 7 from 6:30pm-8pm at the MHS Gym. The Mini Cheerleaders will then perform at the Pink-Out Football Game on Oct. 11th! Please contact Andria Harris to register your child by Oct. 3rd!



Our MHS Booster Club is sponsoring a “Pink Out Night” on Friday, October 11th for the football game against Sedgwick. Everyone is encourage to wear PINK!



partners. Even last summer the Meade County News did a feature article about the development of this collaborative project. The idea of having four public entities develop this together is amazing in itself. This was purposeful in order to share resources, ideas, manpower, equipment, etc. This partnership agreement was discussed by all four entities at public meetings mostly last spring before it was approved unanimously. This clearly shows a vision for this project by our elected and appointed officials and the desire to work together to benefit the community of Meade.

At this point the committee has spent months working with a specialized attorney to meet all the legal requirements to put together an organization to get this effort going in the right direction. This has taken longer than expected and there is still a ways to go, but it is important. Because the Meade Board of Education supports this project wholeheartedly, they have provided the initial cost of securing an attorney and the architect. The board has also showed support by their willingness to provide land for the facility just across the road north of the football field. It is also incredible to see the support and resources the Meade Recreation Commission, the City of Meade, and the Artesian Valley Health System are willing to provide. THANK YOU!

In recent months there has been a ton of community conversation about the Meade Recreation Commission mill levy and funding regarding this facility. Some information about the mill levy and the Meade Recreation Commission has been misleading and inaccurate.

- The mill levy is NOT going up automatically to 4 mills. The resolution approved by the school board and the commission states “not to exceed 4 mills,” so it could never increase more than 3.
- Please note there has been NO increase to the Rec. mill levy, which has been 1 mill, since it was first levied in 1985. Most Rec. Commissions levy multiple mills to support community health, wellness, and Rec. activities.
- The Meade Board of Education in this year’s budget only increased the Rec. levy by 1 mill, but lowered other mill levies, **so there is NO increase in the mill levy. As a result your overall taxes levied by the school are NOT going up.** This has been the intent of the board from the beginning.
- The Recreation Commission has plans to dedicate a significant portion of their reserve funds which have been saved for a project like this. What a great use of funds for young and old alike. There are many recreation commissions that operate facilities similar to this in small communities just like Meade.
- All funds used by the Rec. Commission are audited each year by the same CPA that audits the school, so the community can rest assured that the funds are being allocated appropriately even if you have heard statements to the contrary.
- While the goal of the committee is to raise funds through donations, grants, foundations, membership, sponsors, etc., there will be on going expenses. The additional Rec. levy is designed to help with these on going costs which matches perfectly with their goals.

Many of you know I am a farm boy and I pay taxes on property like everyone else, so that is why I have worked with our board to **purposely keep the overall mill levy the same as last year.** I am proud of the work and the vision our committee has had for a community facility which could benefit generations to come. Some have said this facility is just for kids and the school. I can say absolutely that is not true. Our committee purposely discussed how we could provide more opportunities for seniors in our community. That is one of the primary reasons a walking track was included. Our dream is to have a full time combined Wellness and Recreation Director who can set up health and wellness activities for **ALL ages.**

Finally I want you to know even my hometown recently opened a wellness center through a community effort involving multiple entities including the Minneola Health Care Foundation and the Minneola District Hospital. It has become a popular place in just a few months. In fact it has become so popular, we have people from Meade going to Minneola to use it. Maybe I am a bit jealous, but I believe we can have a modern facility in Meade that will become just as popular. Our four local public entities have already shown their support, now I hope we can get the rest of the community to show their support as well.

Parent Teacher Conferences Different Again this Year

For a second year conferences will be a little different. Students will help lead the conference. In 5th grade through high school parents will be encouraged to attend and visit with teachers about their child’s Individual Plan of Study (IPS) and about some of the career paths that their child is interested in pursuing. With the addition of the Career Academy, the school has renewed its focus on helping students have more career awareness in planning their future studies.

Preschool-12th grade Conferences will be held on two evenings on October 29 and 30 between 4 and 8 PM. Information about conferences will be sent home prior to conferences. Preschool through 4th grade student conferences will be similar to the past. A schedule will be sent home from the elementary school as the date draws near for conferences.

PTO Update

The Meade PTO is hitting the ground running!! We have events planned and on the calendar!!

- **Box Top Collection- Anytime!**
- **Wednesday, October 16 - Px4**
- **December Teacher Giving Tree**
- **Friday, February 21 Father & Daughter Dance**
- **Friday, April 3 Mom & Son Night**

As the events draw closer we'll send home additional information and reminders! Other events will be added throughout the year!

Next meeting Monday, October 21. ANY & ALL parents are invited to PTO meetings. PTO Officers: President: Casie McAtee Vice President: Amy Pippitt Secretary: Jateice Vieux Treasurer: Casey Hardaway.

What is PTO's Px4??

PTO's Px4 Day is Wednesday, October 16! This is a FUN activity for the kids and a small fundraiser for the PTO! Kids can order any combination of pickles, popcorn, pop and pencils for a small fee, .50 each! Students who ride the bus are dismissed at 3:15 to pick up their goodies and all other students may pick theirs up when the bell rings. ALL ORDERS ~ MONEY & FORMS ~ ARE DUE NO LATER THAN THURSDAY, October 10!
-Casie McAtee

Order Form:

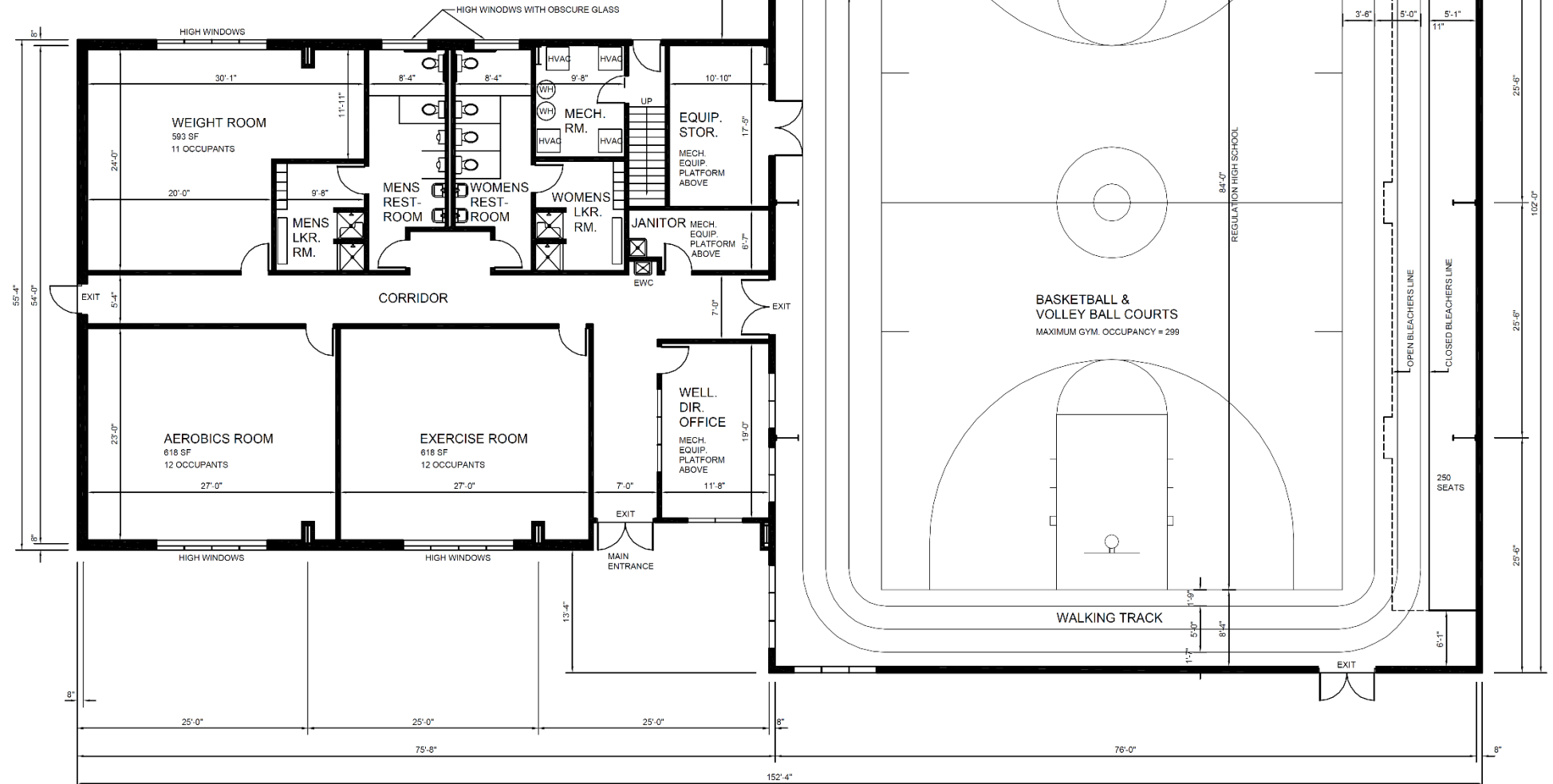
Students Name: _____
Teacher / Grade _____ Rides the bus: Y ____ N ____
HOW MANY?
Pickles _____ Popcorn _____ Pencils _____
Pop Cola _____ Dr Thunder _____
Root beer _____ Lemon-Lime _____
Each item is .50 .50 x # of items = TOTAL: _____

- No School – October 7th Teacher Inservice
- Parent/Teacher Conferences Oct. 28 & 29, 4-8 PM
- No School – November 1st

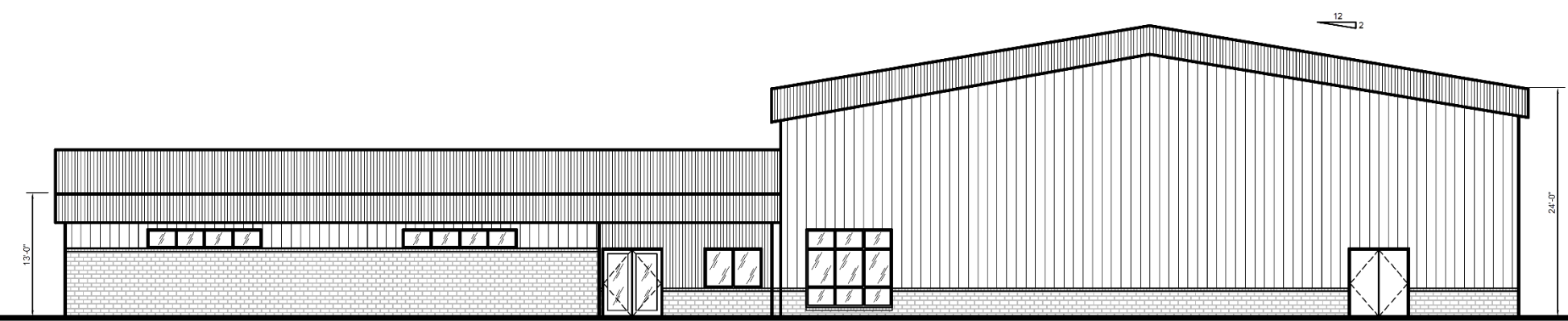


Preliminary Architectural Rendering
Of Meade Health and Wellness
Activity Center

0% Increase in Overall
School Mill Levy



DESIGN NO. 3 APR. 30, 2018 11,984 SQ. FT. BLDG. AREA MEADE WELLNESS & RECREATION CENTER
ROGER ANGELL, ARCHITECT FIRST FLOOR PLAN



SOUTH ELEVATION (FRONT)

Bufs of the Month



Front: (L to R) Thomas Benear, Audrey Price, Brevyn Roberts, Averie Riley, Milo Bussen, Emanuel Pichilla, Back: (L to R) Rachelle Neely, Joslyn Helus, Kemper Flavin, Kenna Cordes, Kenzleigh Hardaway, Lily Bussen, Lainey Jones



Sutterfield Sets New School Record

On Thursday September 12th, Madison Sutterfield ran a New School Record in Cross Country for the 5K. Madison's time of 20:21.7 won the Freshmen Girls race at the Hesston Invitational. Coach

Daugherty said this of the race, "Madison went out very controlled at the start of the race and looked confident. She noticed when it was time to break away from her competitors, and slowly started to pull away. We are looking forward to the rest of the season with her and how she continues to grow and learn how to race."

MHS Girls' Tennis 2019





MHS Football 2019



MJH Football
2019



MHS Volleyball 2019



MJH
Volleyball
2019



MHS Cross Country 2019



2019-2020 Booster Club is in Full Swing!!

Some upcoming events include:

- Friday, October 11- Pink Out Night for ALL those in attendance that wear a past MHS Pink Out Night shirt- Booster Club will pay your way into the game!
- Tuesday, November 5- Athletic Banquet 7:00 pm All MHS fall athletes will be recognized, and we ask their families to join us for a Taco Bar. Each family is asked to bring a side dish or dessert.
- It's never to late to become a Booster Club Member.
 - White Level: \$150.00
 - Purple Level: \$75.00
 - Silver Level: \$25.00

**The
Booster
CLUB**

If you are interested in becoming part of the Booster Club please contact: Casie McAtee, Tamra Clawson, Mario Saucedo or Clayton Hardaway.
-Casie McAtee

MJH Cheerleading 2019



The MHS Cheerleaders' Picture Was Not Available by the Print Deadline.

Sport Pictures Courtesy Erin Pauls



MJH Cross Country 2019



MJH
Volleyball
Takes
2nd at
Lakin
Tourney

A Big
Thank
You to All
the JH FB
Boys Who
Came to
Support
the Girls.



Monday	Tuesday	Wednesday	Thursday	Friday
<div>Breakfast is listed 1st each day. Grab & Go Breakfast is 2nd. Lunch is listed 3rd & 2nd Choice is listed below the line. Sometime options are just for HS or GS or for 5th-12th grades.</div>	Breakfast Burrito 1 G & G – Pancake on Stick Sloppy Joes, Tator Tots Salad Bar, Fruit, Milk 2 nd Ch. – Pigs in Blanket, Tator Tots	Donuts 2 G & G – Muffins Taco Burger, Chips, Salsa Salad Bar, Fruit, Milk 2 nd Ch.– Burrito-Beef & Bean, Chips Salsa Chef Salad (5 th -12 th)	Egg Bake, Toast 3 G & G – Breakfast Sandwich Chicken Wrap, Chips Salad Bar, Fruit, Milk 2 nd Ch. – Roast Beef/Cheese Sandwich, Chips	French Toast on Stick 4 G & G – Poptarts, Go-Gurt Pizza Pocket, Cookies Salad Bar, Fruit, Milk 2 nd Ch. – Crispy Chicken Sandwich, Cookies, Chips Crispy Chicken Salad (5 th -12 th)
7 No School Teacher Inservice	Sausage/Cheese Biscuit 8 G & G – Biscuits & Gravy Chicken & Noodles, Mashed Potatoes, Veggie, Rolls Salad Bar, Fruit, Milk 2 nd Ch. – Steak Fingers, Same Sides	Muffins 9 G & G – Scones Meatball Sub, Chips Salad Bar, Fruit, Milk 2 nd Ch.– Pulled Pork Sub, Chips Grilled Chicken Salad (5 th -12 th)	Breakfast Burrito 10 G & G – Breakfast Pizza Shredded Beef/Cheddar Sub, Potato Salad, Frozen Fruit Bar Salad Bar, Fruit, Milk 2 nd Ch. – Corn Dog, Potato Salad,Frozen Fruit Bar	Poptarts, Yogurt 11 G & G – Ham/Cheese Croissant McRib Sandwich, Tator Tots Salad Bar, Fruit, Milk 2 nd Ch. – Club Sub, Tator Tots Chef Salad (5 th -12 th)
Yogurt, Fruit Bar 14 G & G – Donuts Hamburger, French Fries Salad Bar, Fruit, Milk 2 nd Ch. – Corn Dog, French Fries Grilled Chicken Salad (5 th -12 th)	Biscuits & Gravy 15 G & G – Breakfast Sandwich Chicken Quesadilla, Chips, Salsa Salad Bar, Fruit, Milk 2 nd Ch. – Cheese Quesadilla, Chips, Salsa	Waffles 16 G & G – Muffins Chili & Crackers, Cinnamon Rolls Salad Bar, Fruit, Milk 2 nd Ch.– Hot Dog, Chips Crispy Chicken Salad (5 th -12 th)	Bagel Bites 17 G & G – Waffles, Go-Gurt Chicken Wrap, Rice Salad Bar, Fruit, Milk 2 nd Ch. – Roast Beef/Cheese Wrap, Rice	Muffins 18 G & G – Breakfast Pizza BBQ Beef Sandwich, Chips Salad Bar, Fruit, Milk 2 nd Ch. – Club Sub, Chips Chef Salad (5 th -12 th)
Donuts 21 G & G – Yogurt, Cereal Bar Chicken Nuggets, Tator Tots Salad Bar, Fruit, Milk 2 nd Ch. – Steak Fingers, Tator Tots Turkey & Bacon Salad (5 th -12 th)	Breakfast Sandwich 22 G & G – Breakfast Burrito Beef Philly Sub, Rice, Cookie Salad Bar, Fruit, Milk 2 nd Ch. – Chicken Sandwich, Rice, Cookie	Pancakes 23 G & G – Bagel Bites Taco Soup, Tortilla Chips Salad Bar, Fruit, Milk 2 nd Ch.– Chicken Wrap, Chips, Salsa Crispy Chicken Salad (5 th -12 th)	Breakfast Pizza 24 G & G – Pancake on Stick, Fruit Roll-up Fish, French Fries, Coleslaw, Hushpuppies Salad Bar, Fruit, Milk 2 nd Ch. – Popcorn Chicken, Same Sides	Pancake on Stick 25 G & G – Poptarts, Go-Gurt Meatball & Pepperoni Sub, Chips Salad Bar, Fruit, Milk 2 nd Ch. – Ham/Cheese Sub, Chips Grilled Chicken Salad (5 th -12 th)
Waffles 28 G & G – Pancakes Steak Sandwich, Curly Q's Salad Bar, Fruit, Milk 2 nd Ch. – Sloppy Joe, Curly Q's Chef Salad (5 th -12 th)	Muffins 29 G & G – Breakfast Sandwich Pigs in a Blanket, Baked Beans, Chips Salad Bar, Fruit, Milk 2 nd Ch. – Fish Sandwich, Chips, Baked Beans	Breakfast Burrito 30 G & G – Donuts Smothered Steak, Mashed Potatoes, Gravy, Corn, Roll Salad Bar, Fruit, Milk 2 nd Ch. Chicken Strips, Same Sides Crispy Chicken Salad (5 th -12 th)	Bagel Bites 31 G & G – Muffins Pizza, Dessert Salad Bar, Fruit, Milk 2 nd Ch. – Chicken Salad Sub, Chips, Dessert	<div>MES – MJH – MHS October Menu</div>

Lake Meade State Park is hosting



ZOMBIE

paintball

October 12 - 7:00 P M

October 19 - 7:00 P M

**SHOOT
ZOMBIES ...
they don't
shoot back**

Time may vary depending on attendance

ALL EQUIPMENT WILL BE PROVIDED

Cost

\$15.00 per person - 200 paintballs

(12 and under must have parent or guardian in attendance)

All proceeds will benefit:

**OK Kids Day
Meade HS Skills USA**

Come Out to Meade State Park and Give it a "Shot"

for more information contact Park Office 620-873-2572



18 OR MORE DAYS

- Excused and unexcused absences represent lost time in the classroom and lost opportunities to learn.
- Missing just one day every two weeks can add up to 18 days in a year. Absences add up before you even know it.



10 TO 17 DAYS

- Students who are absent an average of 15 days a year miss a year's worth of school before their senior year.
- When students miss a day of school it actually puts them two days behind their classmates.



9 OR FEWER ABSENCES

- Students with good attendance generally achieve higher grades and enjoy school more.
- Children benefit and make the most of their educational opportunities if they attend school regularly and on time.

HALLOWEEN PARADE

Oct. 31 - 2:30 pm
MES GYM - PS-3rd Grades

Vaping! - an Epidemic For Teens!

The state's top health official on September 10th urged Kansans to stop vaping after a vaping-related death and a Kansas school board approved filing a lawsuit against e-cigarette manufacturers. Now a second death has occurred related to vaping. The MASSIVE increase in teen vaping is frightening and many believe it may be one of the great epidemics we have faced.

It is estimated that in many states and schools as many as 60% of teenagers have tried or are regularly using E-Cigarettes or vaping. Some estimates indicate that teenagers consume 80% of the market of vaping products. In a recent study vaping use among teenagers rose among teenagers 78% in one year's time. That is possibly the fastest increase of any addictive substance in modern history. If you don't believe kids in Meade or other small communities are involved, you may simply not be aware of how pervasive this epidemic has become.

More than 450 serious lung injuries and six deaths related to the use of e-cigarettes have been reported in 33 states. Some states have actually banned the selling of flavored vapes as they appear to be used mostly by teenagers. What is often not understood is that these devices carry high levels of nicotine masked by the flavors. For example a Juul cartridge (the most popular seller) is the equivalent of a pack of cigarettes. Some students are consuming two of these a day. Many parents are not aware of what is happening because vaping devices are hidden in pens, watches, and even flash drives to name only a few. The smell is usually undetectable when the vape is released, so students will try to vape at home in their room or even at school. They will blow the vape into their shirt, shirt sleeve, or even hold it until it dissipates. It is also popular to put THC in these devices which is the active ingredient in marijuana.

This situation is so bad, that students are making money by selling the products at school or elsewhere. One student in Kansas was recently arrested with \$6,000 worth of vaping products. In many states, including Kansas, students who are 18 can buy the vaping products, so it becomes very easy to purchase and resell to younger students.

I encourage parents to pay attention and figure out if their child is vaping. It is a dangerous epidemic that has many students already hooked and is increasing exponentially. I believe there will be legislation this spring in Topeka to help address the age restriction for these products, but much much more must be done at home if we are to ever combat this health crisis among our teens. Kenneth Harshberger, Supt.



**Musical
Coming to
Meade HS
November
14th & 16th
at 7:00 PM**





Sun	Mon	Tue	Wed	Thu	Fri	Sat
		1 3p HSJV Ten at Meade	2	3 4:30p HS XC at Pratt 4:30p/6p JH VB/FB at Elkhart	4 7p HS FB at Elkhart	5 9a HS VTen Coaches Classic at Dodge City 9a HS VB at SWH
6	7 NO SCHOOL PS-12 9am HPL In-Service at Sublette 6p HS JVFB vs. Elkhart	8 1p HS JV Ten at Ashland 5p HS VB at Stanton Co HPL Meeting in Salina Skills Leadership, Augusta	9 HPL Meeting in Salina Skills Fall Leadership in Augusta	10 4:30p/6p JH VB/FB vs Stanton Co.	11 7p HS FB vs Sedgwick BOOSTER PINK OUT NIGHT HS Regional Tennis	12 HS Regional Tennis 10a JH/HS XC at Lakin
13	14 Columbus Day 6p HS JVFB at Ingalls 6p BOE Meeting	15 5p HS VB at Meade VOLLEYBALL & TENNIS SENIOR NIGHT 5:30p Letter Jacket Sales in HS commons	16 Boss's Day	17 HPL JH/HSXC at Syracuse 4:30pm HPL XC Mtg. in Syracuse 4:30p JH VB/Only at Sacred Heart	18 7p HS FB at Irman HS State Tennis	19 HS State Tennis 9a HS VB HPL Tournament at Syracuse
20	21 4p HS Scholars Bowl at Meade 4:30p JH VB vs Wichita Co. - (at Meade)	22 HS VB Regionals	23	24	25 End of 1st 9 Weeks DISMISS AT 1:00P Teacher Workday 7p HS FB vs Sublette Senior Night	26 HS Sub-State Volleyball Regional HS XC
27	28 10am JH VB Pool Play at Cimarron PARENT/TEACHER CONFERENCES—4p-8p	29 MES/MJH Picture Retakes 4p JH VB Finals at SWH 4p HS Scholars Bowl at Lakin	30	31 HALLOWEEN 2:30p PS-3rd Grade Halloween Parade at MES Gym		

Meade USD #226
PO Box 400
Meade, KS 67864

Nonprofit Organization
U. S. Postage Paid
Meade, Kansas
Permit No. 41

Postal Patron

