



**AMI PACKET**  
(Alternate Methods of Instruction)

Grade 6  
Ms. Daniels  
Mr. Hunt  
Ms. Washington  
Mrs. Webb

Student's Name

---

Day 2

2019-2020 School Year

**Parent Note:**

All activities are due within 5 school days from the day school resumes.  
Each day of activities will count for attendance during a missed AMI day.  
Grades will be assigned for activities. Failure to complete activities will result in a zero.

# Mark Twain

Read this story to learn some important facts about a great writer.

<sup>1</sup> “I’m told this actor we’ve come to see almost convinces you that he is Mark Twain. This should make quite a feature story for both of us,” said Uncle Max as he and Tom took their seats in the theater.

<sup>2</sup> “Huckleberry Finn will always be my hero,” Tom said. “He had some great adventures. Every time I read that book, I wish I could’ve been there with him.”

<sup>3</sup> “I’ve always dreamed of rafting down a river,” Uncle Max admitted. “I’d look up at the stars at night just like Huck and his friend Jim did,” whispered his uncle as the curtain rose.



<sup>4</sup> On the stage stood a gentleman all clad in white, right down to his shoes. Bushy white hair crowned his head, and he sported a full, rich, white moustache.

<sup>5</sup> “My, my, look at all these fine folks who’ve come to see me,” the actor’s voice boomed. “You know, I was born Samuel Clemens, and there’s nothing wrong with that name. I just found it a bit dull, so I took my name from the river I adored. You

see, when that old steamboat came chugging along the Mississippi River, everyone listened for the call, ‘mark twain.’ I loved the sound of it. That meant the river had been measured at two fathoms, or twelve feet. In other words, it was just deep enough for a steamboat to pass through.

<sup>6</sup> “You know, I left school when I was twelve. I don’t recommend it, but I have no regrets. I’ve been a printer’s helper and a riverboat pilot. I even went west looking for gold, but since I found nothing but rock, I started writing for a newspaper.”

<sup>7</sup> The performance went on as the man told stories about life on the Mississippi River. Some of the stories were funny, but they all seemed to have a special message.

<sup>8</sup> “Some folks think I’m funny, although some say I poke too much fun at people. I say it’s good to be noble. But to tell others how to be good is nobler and less trouble. And why shouldn’t we laugh at ourselves? I mean, let’s face it. People are the only animals who blush—and the only ones that need to!”

<sup>9</sup> The audience clapped then, as they recognized Mark Twain’s famous quote.

<sup>10</sup> The actor closed by saying, “You know, I came in with Halley’s Comet in 1835. The comet is coming again soon and I’d sure be disappointed if I didn’t go out with it. I’m looking forward to that. And now, goodnight.”

<sup>11</sup> Applause filled the auditorium. As the actor who looked so much like Mark Twain stepped from the stage, a voice was heard saying, “Halley’s Comet, which appears every seventy-five years or so, showed up during the week of Mark Twain’s death.”

<sup>12</sup> “What a great performance!” Tom exclaimed. “I want to start on my story right away, before I forget anything.”

<sup>13</sup> “You’re right. We’ve got work to do,” Uncle Max said, “so let’s go.”



## Knowing the Words

Write the words from the story that have the meanings below.

1. special article

\_\_\_\_\_ (Par. 1)

2. dressed

\_\_\_\_\_ (Par. 4)

3. measurement of depth

\_\_\_\_\_ (Par. 5)

4. a bright, starlike heavenly body

\_\_\_\_\_ (Par. 10)

5. Write **A** between each pair of words that are antonyms, words with opposite meanings.

always	—	never
friend	—	enemy
helper	—	assistant
dull	—	exciting
clap	—	applaud

## Learning to Study

Write the number of the encyclopedia volume that would have the most information for each of the topics below.

Vol.	Vol.	Vol.	Vol.	Vol.	Vol.	Vol.
1	2	3	4	5	6	7
A-C	D-F	G-J	K-M	N-Q	R-T	U-Z

- Mississippi River \_\_\_\_\_
- Samuel L. Clemens \_\_\_\_\_
- Steamboats \_\_\_\_\_
- Halley's Comet \_\_\_\_\_
- Tom Sawyer \_\_\_\_\_

## Reading and Thinking

- Mark Twain's real name was \_\_\_\_\_  
\_\_\_\_\_.
- How many feet equal two fathoms?  
\_\_\_\_\_.
- The main idea of paragraph 6 is \_\_\_\_\_ looking for gold.  
\_\_\_\_\_ Mark Twain's various jobs.  
\_\_\_\_\_ Halley's Comet.

Write the word that best completes each sentence.

- I hope the raft doesn't \_\_\_\_\_ when we are on the lake.  
clutch    overturn    shiver
- A person needs good \_\_\_\_\_ skills to be an actor.  
communication    feature    comet

## Working with Words

The prefix **im-** sometimes means "not." Add **im-** to each word. Then write its new meaning.

- polite \_\_\_\_\_  
\_\_\_\_\_
- perfect \_\_\_\_\_  
\_\_\_\_\_
- possible \_\_\_\_\_  
\_\_\_\_\_
- patient \_\_\_\_\_  
\_\_\_\_\_
- The prefix **il-** can also mean "not." Write a definition for the word *illegal*.  
\_\_\_\_\_

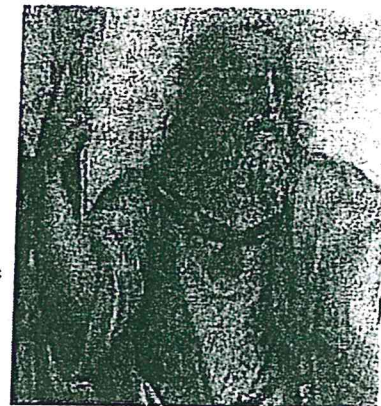


Name: \_\_\_\_\_

## Atlantis - Fact or Fantasy?

Imagine living in a perfect city - under the ocean! That's what some people think about Atlantis. Movies, books, and stories abound. All of these are inspired by the legend of a lost civilization. Is it true? Or is it all just make-believe? Let's look at what we know. Then you can decide what you think.

Plato wrote the first stories about Atlantis. In his stories of Timaeus and Critias, he tells of an island that was in the middle of the Atlantic Ocean. It was the home of Poseidon, the god of the sea. While living on Atlantis, Poseidon fell in love with a mortal woman, Cleito. He built a special place for Cleito to live on a mountain in the middle of the island. He encircled it with strips of land and water to keep her safe. Cleito and Poseidon had ten sons, five sets of twins. When the boys grew up, they became the rulers of Atlantis. Poseidon made Atlas the king. His other sons were made princes of territories on the island.



The people of Atlantis became very wealthy. The island had numerous natural resources. Other countries traded there. Vegetation was abundant. Many different animals wandered among the forests and mountains of the island. The people were happy and peaceful. But over the years, this began to change. The people became greedy and wanted to conquer other lands. Zeus, the ruler of the gods, watched Atlantis change. He didn't like what he saw. So, Zeus met with the other gods. They decided that Atlantis needed to be punished. Zeus sent a giant wave to engulf the island. In a moment, Atlantis was swept into the sea.

Many people believe that Atlantis is fictional place. It is said to be just a good story written by Plato. Even though Plato says the story is true in his writings, there is no evidence to support the existence of Atlantis. There are some truths in the story. Plato had a lot of knowledge about the sea. He also told of a continent "beyond the island of Atlantis." Also, his great-grandfather was Critias. Plato tells that the original story came from the Ancient Egyptians who traded with Atlantis.

Another thought is that the story of Atlantis tells about the destruction of the island of Thera. Thera was the home of the Minoan Civilization. In 1500 BC, the island was rocked by a volcanic explosion. More than half of the island sank into the ocean. Archaeological evidence shows us many things about the Minoans. The Minoans were a highly developed society. However, none of the evidence suggests that Thera was Atlantis. Additionally, Plato's dates don't match those of Thera's destruction.

Since the time of Plato, stories about this mythical island have abounded. People seem to love the idea of a lost civilization. Explorers have looked for evidence for thousands of years. Over the years, many locations have been suggested for the lost island. Antarctica, the Caribbean, and the Black Sea have all been proposed as places where Atlantis is located. The story has grown to include the idea of a city that exists beneath the sea. These stories suggest that Atlantis is a perfect place with a magic crystal that gives its inhabitants the ability to live under water.

Does Atlantis really exist? Or is it just a story? There are no records of Atlantis in historical sources. Archaeologists have searched for many years. They haven't found evidence that Atlantis existed. Yet, Plato says the story is true. So what do you think? Is there a lost island somewhere? Does an undersea city exist? Or is Atlantis just another good story for us to enjoy? It certainly is fun to consider.

Name: \_\_\_\_\_

- \_\_\_ 1. Who first wrote the story of Atlantis?
  - A. the Ancient Egyptians
  - B. Poseidon
  - C. Plato
  - D. Critias
  
- \_\_\_ 2. Which god lived on Atlantis?
  - A. Plato
  - B. Zeus
  - C. Cleito
  - D. Poseidon
  
- \_\_\_ 3. Zeus sent a giant wave to destroy Atlantis because...
  - A. he wanted to marry Cleito
  - B. he was upset with how the people had changed
  - C. he was at war with Atlantis
  - D. he wanted to live under the sea
  
- \_\_\_ 4. Which of the following did Plato say was the location of Atlantis?
  - A. the Caribbean Sea
  - B. the Baltic Sea
  - C. the middle of the Atlantic
  - D. the Black Sea
  
- \_\_\_ 5. Thera was the home of the Minoan Civilization.
  - A. false
  - B. true
  
- 6. What do you think Poseidon's nine younger sons thought about Atlas being king while they were princes?  
\_\_\_\_\_  
\_\_\_\_\_
  
- 7. How was Critias related to Plato?  
\_\_\_\_\_
  
- \_\_\_ 8. Whom did Zeus meet with to decide a punishment for Atlantis?
  - A. the other gods
  - B. Poseidon
  - C. Poseidon's sons
  - D. Plato



Name \_\_\_\_\_ AMI Day 2 Literacy

### Compound and Complex Sentences

An **independent clause** is a sentence that makes sense by itself. A **compound sentence** is made of two closely related independent clauses. The two clauses can be joined by a comma and a conjunction (and, but, or) or by a semicolon (;). A **dependent clause** has a subject and a verb, but it does not make complete sense by itself. It needs an independent clause. A dependent clause begins with a subordinating conjunction such as *although, because, if, as, or when*. A **complex sentence** is made up of a dependent clause and an independent clause.

Write **CD** next to each compound sentence and **CX** next to each complex sentence.

Example:

When a screenplay calls for imaginary events, filmmakers use special effects. CX

1. When the weekend weather is good, I usually ride my bike through my neighborhood. \_\_\_\_\_
2. If I pass a friend, I say hello. \_\_\_\_\_
3. Although I have biked here many times, I always see something new. \_\_\_\_\_
4. There may be a street fair, or someone may have planted a new garden. \_\_\_\_\_
5. The grocery stores have boxes of fruit outside, and the fruit varies with the season. \_\_\_\_\_
6. My favorite is kiwi fruit; it's the fruit with fuzzy brown skin and green flesh. \_\_\_\_\_
7. I often cycle to Spring Street although it's a long ride. \_\_\_\_\_
8. Because the return trip is mostly downhill, it's both fast and fun. \_\_\_\_\_
9. I don't like riding my bicycle after dark; I go home before sunset. \_\_\_\_\_
10. Biking is fun on nice days, but it is not so pleasant in rain or snow. \_\_\_\_\_

Name: \_\_\_\_\_

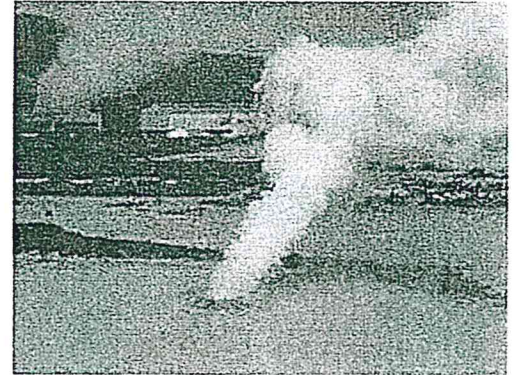
AMI Day 2

## How Does Geothermal Energy Work?

---

Geothermal energy comes from the heat inside the Earth. People can use geothermal energy to heat and cool their homes and to make electricity. The Earth's heat is a clean energy source. It does not cause any pollution. It is also renewable energy. We can't use it up. But how does geothermal energy work?

Much of the Earth's heat comes from its core. It is still hot from when the Earth formed over four billion years ago. Heat from the core spreads outward through the earth's mantle, or middle layer. Inside the mantle, rocks are mostly in liquid form, called magma, melted by the Earth's internal heat. Magma heats the water under the ground. In some places, the hot water shoots to the surface in hot springs and geysers. This hot water can power geothermal energy systems.



Iceland is one place where geothermal energy is used to heat buildings and to grow food. That country has about 25 active volcanoes. Hot springs and geysers are common there, too. Water from hot springs is piped into buildings. The buildings are heated by the water passing through pipes and radiators instead of furnaces that burn coal, oil, or gas.

Greenhouses use geothermal energy where it is too cold to grow food outdoors. Inside the greenhouses, there are pipes full of hot water. Hot water is pumped up from underground and used to heat the greenhouses. The hot water warms both the soil and the air inside the structure. Greenhouses like this are used to grow food in Iceland, Hungary, Italy, and New Mexico.

Many homes in the U.S. are heated with geothermal heat pumps. These use the stable temperatures found in the soil to even outside temperatures. Pipes are placed in the ground about ten feet below the surface near a building. At this depth, the soil temperature stays between 50 and 60 degrees, summer and winter. This means it stays warmer in the winter than the outside air. It stays cooler in the summer, too.

Heat pumps use this warmer or cooler temperature to heat homes in winter and cool them in summer. A liquid is pumped into the buried pipes. In winter, warmth from the ground warms the liquid in the pipes. An electric fan blows over the pipes to heat the rooms of the house. In the summer, the opposite happens. Hot air from inside the house is cooled under the ground. Then it is sent back into the house. The heat removed from the hotter, summer air can be used to heat water for bathing and washing dishes.

Geothermal heat pumps can keep buildings warm even when it is very cold outside. Many heat pumps are small enough to fit inside a home's basement.

Name: \_\_\_\_\_

edHelper

1. Where does geothermal energy come from?

---

---

\_\_\_\_\_ 2. What are some good reasons to use geothermal energy?

- A. It is a clean energy source.
- B. It is renewable energy. We can't use it up.
- C. all of the above

\_\_\_\_\_ 3. Greenhouses use geothermal energy to \_\_\_\_\_.

- A. warm the soil
- B. warm the air inside the greenhouse
- C. both A and B

\_\_\_\_\_ 4. Which country is NOT mentioned in the story as using geothermal energy?

- A. Italy
- B. the United States
- C. Guatemala

\_\_\_\_\_ 5. Geothermal heat pumps are not practical for use in homes.

- A. true
- B. false

\_\_\_\_\_ 6. Ten feet below the surface, ground temperature stays between \_\_\_\_\_.

- A. thirty to forty degrees
- B. ten to twenty degrees
- C. fifty and sixty degrees

\_\_\_\_\_ 7. What can the reader infer about geothermal heat pumps?

- A. Geothermal heat pumps are too expensive for many people to afford them.
- B. Geothermal heat pumps cannot be used in places where it gets very cold in winter.
- C. all of the above

\_\_\_\_\_ 8. What was the author's main purpose for writing this story?

- A. to inform readers with facts
- B. to entertain readers with funny stories about energy
- C. to persuade readers that everyone should use geothermal energy



Name \_\_\_\_\_

Date \_\_\_\_\_

AMI Day 2

1. The answer in subtraction is called the \_\_\_\_\_.  
difference                  quotient                  dividend

2. The answer in division is called the \_\_\_\_\_.  
difference                  quotient                  dividend

Complete the table and use the information to answer questions 3 and 4.

Roosters	1	2	3	4	5	6	7	8
Chickens	25	50	75					

3. If there are 5 roosters, how many chickens are there? \_\_\_\_\_ chickens

4. If there 200 chickens, how many roosters are there? \_\_\_\_\_ roosters

5. rate = 65 miles/hour If a car travels 2 hours, how many miles will it travel? \_\_\_\_\_ miles

6. Write the time 3 hours after 9:00 p.m. \_\_\_\_\_

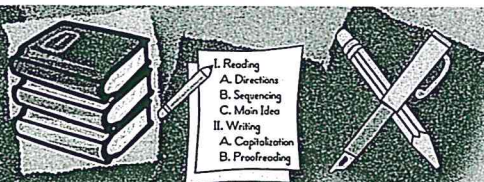
7. 1 minute = \_\_\_\_\_ seconds

8.  $1,093 + 830 + 92,611 =$  \_\_\_\_\_

9.  $10 + 26 \div 2 - 2 =$  \_\_\_\_\_

Complete the pattern.

10. 72, 64, 56, \_\_\_\_\_, \_\_\_\_\_, \_\_\_\_\_



I. Reading  
 A. Directions  
 B. Sequencing  
 C. Main Idea  
 II. Writing  
 A. Capitalization  
 B. Proofreading

Name \_\_\_\_\_

## Context Clues

A **context clue** is a clue or **hint from the sentence** that helps you to figure out words that you don't know.

**Directions:** Read each sentence carefully. Guess the definition of each underlined word based on the context clues in the sentence. Then, use a dictionary to see how good your guess was.

1. He didn't want to miss that game because the coach had said it was a crucial one in deciding the championship.

\_\_\_\_\_ your guess

\_\_\_\_\_ dictionary definition

2. Although he tried to be punctual, he was always late.

\_\_\_\_\_ your guess

\_\_\_\_\_ dictionary definition

3. The confusing instructions that come with some home computers perplex many people.

\_\_\_\_\_ your guess

\_\_\_\_\_ dictionary definition

4. Light has a velocity of about 186,000 miles per second.

\_\_\_\_\_ your guess

\_\_\_\_\_ dictionary definition

5. Our pet bird warbles happily in his cage all day long.

\_\_\_\_\_ your guess

\_\_\_\_\_ dictionary definition

