



MEDFIELD HIGH SCHOOL

88R South Street, Medfield, MA 02052

www.medfield.net

Main Office: 508.359.4367

Guidance Office: 508.359.2482

Fax: 508.242.8516

School Profile 2018-2019

CEEB Code

221-360

ADMINISTRATION

Jeffrey Marsden, Ed.D.	Superintendent
Mary Bruhl	Director of Student Services
Michael LaFrancesca	Director of Finance
Robert Parga	Principal
Heather Mandosa	Assistant Principal
Jeffrey Sperling	Assistant Principal

GUIDANCE DEPARTMENT

Stephanie Worthley	K-12 Department Chair
Anne Lodge	Guidance Counselor
Kathy Mahoney	Guidance Counselor
Erik Ormberg	Guidance Counselor
Amanda Padden	Guidance Counselor
Russell Becker	Adjustment Counselor
Trinka Snyder	School Psychologist

TOWN OF MEDFIELD

Population 12,024
Suburban community
Middle to high income
Primarily residential
Located 20 miles southwest of Boston

MEDFIELD HIGH SCHOOL

Academic grades: 9-12
Enrollment: 806 Students
Class of 2019 Enrollment: 187 students
District Enrollment: 2,637 students

NATIONAL / STATE RECOGNITIONS

National Merit Scholarship Program
11 Commended Scholars
2018 US News & World Report
#7 Ranked School in Massachusetts

MISSION STATEMENT

Medfield High School, in partnership with family and community, promotes both integrity and excellence in scholarship and citizenship for all learners.

Medfield High School is a comprehensive and rigorous high school, serving 836 students, grades 9-12. The student population is served by 85 faculty members. Students take 7 classes, which generally meet 4 times a week. Students are fully scheduled each day and do not have study halls. Our program of studies can be found on our website. MHS has an extensive commitment to providing students with a learning environment in which they can grow and develop in the 21st century through technology integration in the classroom.

LEVELING INFORMATION

Courses at Medfield High School are offered at the Honors (H), College Prep 1 (C1), and College Prep 2 (C2) level for freshmen and sophomores. In addition to these levels, juniors and seniors, may take courses at the advanced placement (AP) level. Courses at all levels align with the state curriculum frameworks but differences occur in the pacing, depth of coverage, and independent study required.

ADVANCED PLACEMENT OFFERINGS

Seventeen AP level courses are offered: Biology, Calculus AB, Calculus BC, English Language & Composition, English Literature, Environmental Science, European History, French, MacroEconomics, Physics II (Algebra based), Psychology, Spanish, Statistics, Studio Art, US Government & Politics, and US History.

GRADUATION REQUIREMENTS

Students must pass a minimum number of full year courses or their equivalency according to the chart listed below:

Required Courses

English	20 credits
Social Studies	15 credits (5 credits must be US History)
Science	15 credits
Mathematics	15 credits
Wellness	10 credits (one semester each year of high school)
World Languages	10 credits (of the same language at the high school level)
Visual & Applied Arts	5 credits

Total credit requirements are: 115 credits

Students must achieve a competency determination on the English/Language Arts, Mathematics and Science MCAS.

MARKING SYSTEM

A+ 97-100	A 93-96	A- 90-92	B+ 87-89	B 83-86	B- 80-82	C+ 77-79	C 73-76	C- 70-72
D+ 67-69	D 63-66	D- 60-62	F Below 60			P Passing	W Withdrawn	H Honors
						I Incomplete	N No Grade/No Credit	

GRADE POINT AVERAGES

Each Medfield High School student is provided two GPA profiles, weighted and unweighted. The GPA is only calculated at the end of the semester and is based on a 4.0 scale.

The GPA is calculated by utilizing the grades earned in all courses with the exception of Pass/Fail courses, Skill Development, and special programs. The weighted GPA profile is calculated by providing students with an additional 0.8 for full year courses and 0.4 for all semester courses taken at the honors or advanced placement (AP) level.

The GPA of students who transfer to Medfield High School only reflects work completed at Medfield High School.

Grade	C1/C2	AP/H	Grade	C1/C2	AP/H	Grade	C1/C2	AP/H	Grade	C1/C2	AP/H
A+	4.33	5.13	B+	3.33	4.13	C+	2.33	3.13	D+	1.33	2.13
A	4.00	4.80	B	3.00	3.80	C	2.00	2.80	D	1.00	1.80
A-	3.67	4.47	B-	2.67	3.47	C-	1.67	2.47	D-	0.67	1.47

ARTS, ATHLETICS AND EXTRACURRICULARS

As a member of the Tri-Valley League, approximately 93% of MHS students participate in 26 interscholastic athletic programs, which are offered at the varsity, junior varsity or freshman levels. The Warriors have won an amazing 24 state titles since the year 2000 in eight different sports. In the arts, MHS students routinely receive prestigious national, statewide and local awards for accomplishments in music, visual arts, theater, and other areas. MHS music ensembles have recently performed and held music education exchanges in Cuba, China, New Orleans, and Canada. Additionally, students at MHS participate in about 30 different clubs.

SAT REASONING & SAT SUBJECT TESTS

Class of 2018 - 232 Students

485 SAT Reasoning Tests

Reading & Writing	Mathematics	MEAN
597	616	1213

201 SAT Subject Tests

Subject	MEAN
Biology - Ecology	632
Biology - Molecular	650
Chemistry	602
English Literature	636
French	460
Math Level I	655
Math Level II	714
Physics	696
Spanish	532
US History	679

THE ACT

Total Test Takers 165

	English	Math	Reading	Science	Composite
MEAN	25.8	26.1	26.6	26.0	26.3

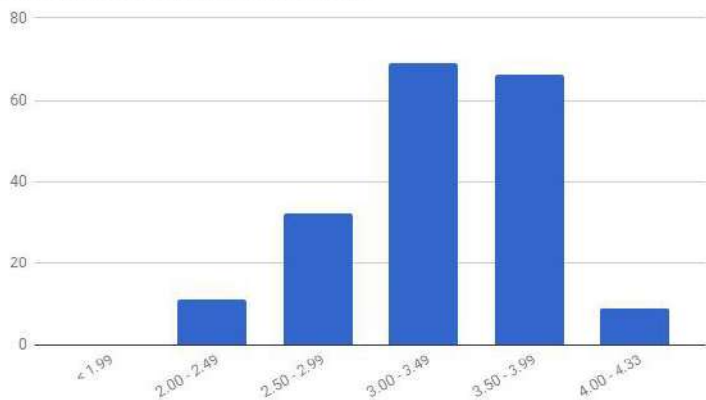
2018 ADVANCED PLACEMENT INFORMATION

592 exams were given to 304 students.

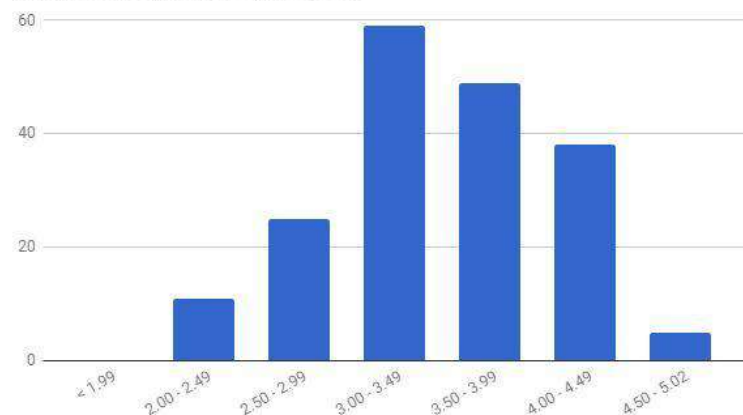
76% of scores were 3 or above

GPA DISTRIBUTION - CLASS OF 2019

Unweighted Histogram for Class of 2019



Weighted Histogram for Class of 2019



COURSE OFFERINGS

ENGLISH
 AP English Literature & Composition
 English Literature(C2, C1, H)
 AP English Language & Composition
 American Literature (C2, C1, H)
 World Literature (C2, C1, H)
 English 9 (C2, C1, H)
 Creative Writing (C1)
 Expository and Analytical Writing (C1)
 Film Theory (C1)
 Graphic Storytelling (C1)
 Honors Writing Seminar (H)
 Journalism (C1)
 Shakespeare (H)
 Speech (C1)
 Yearbook Design & Publishing (C1)

MATH
 AP Calculus BC
 AP Calculus AB
 AP Statistics
 Calculus (H)
 PreCalculus (C2, C1)
 Topics in Math (C2)
 Applied Math (C2)
 Math Analysis (H)
 Advanced Algebra & Trigonometry (C1)
 Functions and Trigonometry (C2)
 Algebra II (C2, C1, H)
 Geometry (C2, C1, H)
 Algebra I (C2)

SCIENCE
 AP Biology (*lab)
 AP Chemistry (*lab)
 AP Environmental Science (*lab)
 AP Physics (*lab)
 Chemistry (C2, C1, H) (*lab)
 Physics I (C2, C1, H) (*lab)
 Biology I (C2, C1, H) (*lab)
 Current Issues in Science
 Engineering I
 Engineering II
 Environmental Studies
 Forensic Science (*lab)
 Human Anatomy & Physiology (*lab)
 Marine Science (*lab)

SOCIAL STUDIES
 AP US History
 AP Psychology
 AP US Government & Politics
 AP Economics
 US History II (C2, C1, H)
 US History I (C2, C1, H)
 World History II (C2, C1, H)
 21st Century Citizenship
 Behavioral Studies
 Future Studies
 Modern World Conflicts
 General Psychology
 Practical Law
 Sociology

SPECIAL PROGRAMS
 Independent Study
 Online Courses (TEC, VHS)
 Senior Project
 Work Release

WORLD LANGUAGE
 AP French
 AP Spanish
 French V (H)
 Mandarin V
 Spanish V (H)
 French IV, III, II, I
 Latin IV (H)
 Mandarin IV, III, II, I
 Spanish IV, III, II, I
 Latin III, II, I
 Intro to Spanish
 Global Spanish

BUSINESS AND TECHNOLOGY
 Accounting I
 Accounting II
 Computer Science
 Entrepreneurship
 Introduction to Business
 Technology Help Desk

PERFORMING ARTS
 Band
 Concert Choir
 Intro to Guitar
 Orchestra Strings
 Chamber String (H)
 Jazz Band (H)
 Lab Jazz Ensemble
 Jazz Choir (H)

VISUAL ARTS
 3-Dimensional Design
 Drawing & Painting
 Introduction to Art
 Graphic Design I
 Graphic Design II
 Photography I
 Photography II
 Video Production
 Art I
 Art II
 Studio Art (H)
 AP Studio Art

WELLNESS
 Wellness 9
 Wellness 10
 Athletic Training
 Child Development
 Culinary Arts
 International Cuisine and Culture
 Activities for Life 9/10
 Activities for Life 11/12
 Ballroom Dance
 Outdoor Pursuits
 Personal Safety
 Stress Management

POST SECONDARY PLANS

Class of	2018	2017	2016	2015	2014	2013
Four Year College	93%	93.1%	93.2%	92.5%	93%	94%
Two Year College	1%	1.1%	1.1%	1.5%	1.2%	1.2%
Non-College Education	1.5%	1%	1.8%	1%	1.2%	1.1%
Military	.2%	3%	1%	1%	.01%	.01%
Employment	1%	1.1%	1.2%	.5%	1.4%	3.4%

COLLEGE AND UNIVERSITY MATRICULATION

Top Schools Matriculated

University of Vermont	10	Boston College	5
University of Massachusetts, Amherst	9	Bryant University	5
Bentley University	8	Northeastern University	5
Providence College	8	St. Lawrence University	5
Fairfield University	7	University of Massachusetts, Lowell	5
Loyola University, Maryland	6		

American University	Loyola Marymount University	Texas Christian University
Anna Maria College	Loyola University Maryland	The Catholic University of America
Arizona State University	Massachusetts Bay Community College	The Ohio State University
Assumption College	Massachusetts Maritime Academy	The University of Tampa
Bentley University	MCPHS - Massachusetts College of	Trinity College
Boston College	Pharmacy & Health Sciences	Tufts University
Boston University	Merrimack College	Tulane University
Bridgewater State University	New York University	United States Military Academy - Army
Bryant University	Northeastern University	University of California, Berkeley
Canisius College	Oberlin College of Arts and Sciences	University of California, Los Angeles
Clemson University	Oregon State University	University of Maine
Colby College	Pennsylvania State University	University of Maryland, College Park
Colgate University	Plymouth State University	University of Massachusetts Dartmouth
College of Charleston	Providence College	University of Massachusetts, Amherst
College of the Holy Cross	Quinnipiac University	University of Massachusetts, Boston
Cornell University	Regis College	University of Massachusetts, Lowell
Curry College	Rochester Institute of Technology	University of Miami
Drexel University	Roger Williams University	University of Michigan
Elon University	Roxbury Community College	University of New Hampshire at
Emmanuel College	Sacred Heart University	Durham
Fairfield University	Saint Anselm College	University of Notre Dame
Fitchburg State University	Saint Michael's College	University of Pittsburgh
Fordham University	Salem State University	University of Richmond
Framingham State University	Santa Clara University	University of San Diego
George Mason University	Simmons College	University of St Andrews
Harvard University	Southern Illinois University, Carbondale	University of Vermont
High Point University	Southern New Hampshire University	University of Wisconsin, Madison
Hobart and William Smith Colleges	St. Lawrence University	Vanderbilt University
Ithaca College	Stanford University	Villanova University
James Madison University	Stonehill College	Wentworth Institute of Technology
Keene State College	Stony Brook University	Westfield State University
Lasell College	Suffolk University	Williams College
Lehigh University	Syracuse University	Worcester Polytechnic Institute
Lesley University	Temple University	Xavier University