

Dear Cedarcrest Families,

We are excited for the upcoming school year! Our district and school staff have been busy preparing the school for the arrival of our students.

As we begin this school year, we want to send out information in regards to student arrival, drop off and pick up procedures. As many of you know, there has been frustration during both times of the day that can lead to issues of student safety and tardies. We need your help! The efficiency of our parking lot is heavily dependent upon those using it. So please review the following guidelines and procedures to ensure our students arrive safely, on time, and start their day as smoothly as possible.

Student Arrival Times:

- School starts at 8:15, breakfast starts at about 8:00
- The building will be open to students at 8:00. There is limited supervision prior to this as teachers are preparing for their lessons
- Students should arrive to school after 8:00, unless they have arranged a meeting with a teacher for assistance
- If you are interested in before and after school activities with supervision for your child, the Boys and Girls Club and YMCA have programs available with transportation!

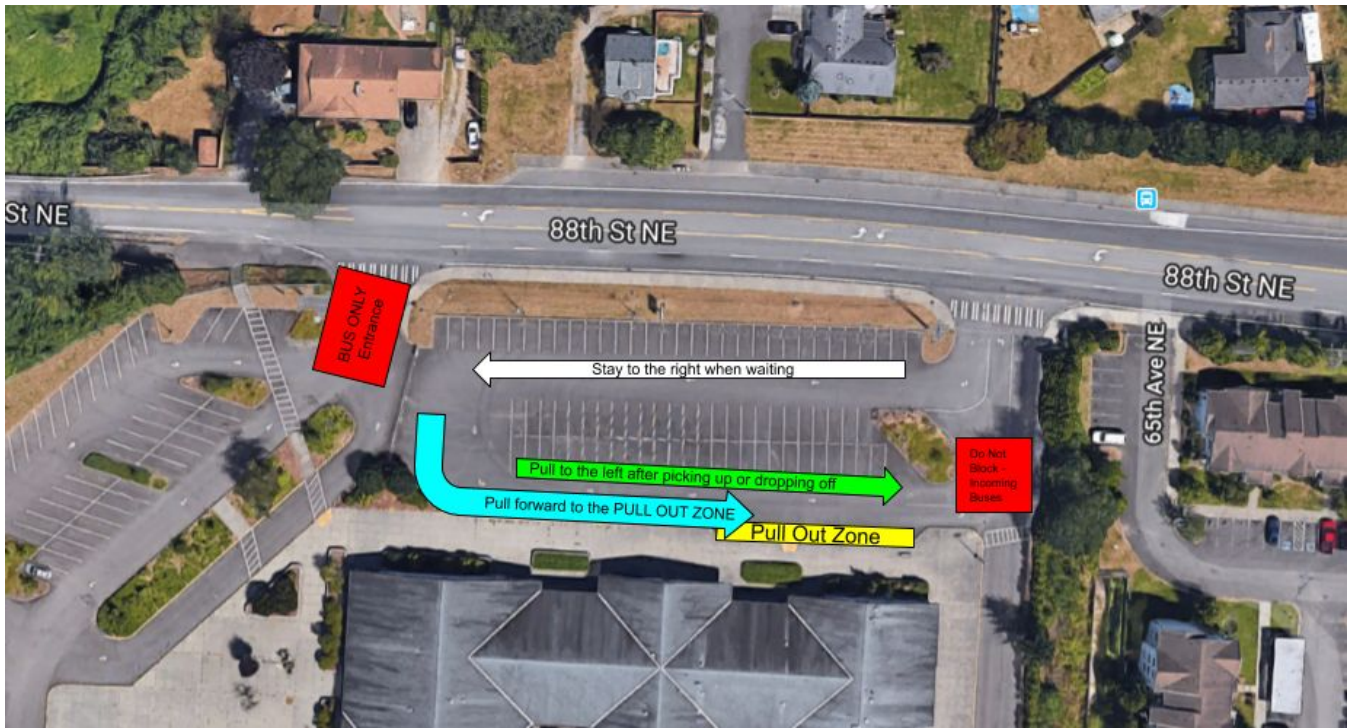
Drop Off and Pick Up Guidelines: *Visuals on the following page*

- Pick up and drop off is in the eastern most lot
- If you arrive early for pick up, please back in to a spot
- If you are going to be waiting or need extra time to unload or pick up, please park in the pull out zone or in a parking spot
- IF YOU ARE THE FIRST CAR IN THE WAITING GROUP, PLEASE PULL FORWARD TO THE YELLOW PULL OUT ZONE
 - Do not stop at the corner closest to the main office unless the car in front of you stops
 - Even though it requires your student to walk, it stops the line and prevents other students from being able to exit. This helps to reduce the time it takes for the line to progress and reduces frustration.

If you are interested in buses, please stop in and talk to one of our office staff members or call the transportation office at 360-965-0300.

Warm regards,
Your Cedarcrest Staff

The following is the process to most effectively use our family drop-off and pick up parking lot to ensure efficiency and safety of students.



Blue Loading and Unloading Zone - PLEASE PULL ALL THE WAY FORWARD, DO NOT STOP AT THE BEND UNLESS THERE IS A CAR STOPPED IN FRONT OF YOU!

Pull Out Zone - If you will take longer to load and unload, please park here.

GROUP 1



GROUP 1:

Cars in the **BLUE** group pull forward, unload/load at the same time. Cars in the **GREEN** group wait. Cars in the **YELLOW** group are waiting in the pull out zone.

GROUP 2



GROUP 2:

Cars in the **BLUE** group move to the left and move forward together. Cars in the **GREEN** group pull forward together, unload/load at the same time. Cars in the pull out zone are waiting. Cars in the **ORANGE** group wait.