

The background features abstract, overlapping geometric shapes in various shades of blue, ranging from light sky blue to deep navy blue. These shapes are primarily located on the right side of the image, creating a modern, dynamic feel. The text is centered on the left side of this blue area.

WELCOME
CLASS OF 2018

The background features abstract blue geometric shapes, including triangles and polygons, in various shades of blue, creating a modern and dynamic design.

Mrs. Shawn Green

2017-2018
12th Grade Counselor

Grade Classification

Enter 12th grade = 17 credits

Graduate from EHS = 23 credits



Short on Credits?

- ▶ Students short on credits are **STRONGLY ENCOURAGED** to attend credit recovery or summer school if offered.
- ▶ Only seniors can be reclassified at semester.

Graduation Requirements



- ▶ 4 credits English
- ▶ 3 credits Math (must include Algebra I)
- ▶ 3 credits Science (must include Biology I)
- ▶ 3 credits History (OK History, US Govt., World History, US History)
- ▶ 0.5 credit Personal Financial Literacy
- ▶ 1 credit Fine Art (ACE), 2 credits Fine Arts (opt out of ACE)
- ▶ 7.5/8.5 credits Electives

Total 23 credits!

CPR Training is now required for graduation.

Seal of Distinction



- ▶ Cumulative GPA of 3.25 on a 4.0 scale
- ▶ Meet the following Criteria:
- ▶ 4 credits in the core classes (English, mathematics, social studies, science)
- ▶ 2 credits in technology, humanities or the arts.
- ▶ 2 credits in foreign language

ACE Legislation/ College Preparatory Curriculum

- ▶ 4 credits English
- ▶ 3 credits Math (must include Algebra II)
- ▶ 3 credits Science
- ▶ 3 credits History and Citizenship
- ▶ 2 credits **Foreign Language** or **Computer Technology**
- ▶ 1 additional credit from the courses listed above
- ▶ 1 credit Fine Arts or Speech
- ▶ 0.5 credit Personal Financial Literacy
- ▶ CPR Training



ACE Legislation Opt Out Form

- ▶ Students who will not meet the college entrance requirements of ACE must submit an Opt Out Form signed by the parent before graduation.
- ▶ Your counselor will provide the form that your parent must sign or find it in the back of the Enrollment Bulletin.

College Testing Requirements

<u>Institution</u>	<u>Test score</u>		<u>GPA</u>
Cameron University	20 ACT	or	2.7
USAO	24 ACT	or	3.0
OSU	24 ACT	or	3.0
OU	24 ACT	or	3.0

Two year colleges:

Require you take an ACT but do not have an entrance score requirement

Free Test Prep

- ▶ EHS has purchased a license with OK Career Guide that will allow students to practice for the ACT, PSAT, SAT and ASVAB.
- ▶ College Test Prep class (one semester)

Oklahoma's Promise Program Requirements

The following must be completed by the time the student graduates from high school:

- ▶ The student must have at least a 2.5 GPA for all course work in grades 9 through 12.
- ▶ The student must complete the 17 unit core curriculum that is part of ACE legislation with a 2.5 GPA.
- ▶ The student must remain in good standing!

ACT or SAT

- ▶ Students need to take either the ACT or SAT for admission to college.
- ▶ The ACT is the preferred test for Oklahoma Colleges and Universities
 - ▶ actstudent.org
 - ▶ Sign up one month before test
 - ▶ Test dates are Sept., Oct., Dec., Feb., Apr., & June
 - ▶ Tests are at Cameron, LHS, MHS
- ▶ **A FREE ACT will be given on March 21th for all juniors this year!**

NCAA Clearinghouse Requirements

- ▶ Because NCAA has such specific requirements, it is very important that athletes meet with their counselor to obtain information on all the NCAA requirements.
- ▶ NCAA only considers foreign language and NOT computer technology as acceptable credit.
- ▶ Athletes can register in their junior year and should take the ACT or SAT no later than the spring of their junior year. There is a registration fee of \$80 (fee may change).

Concurrent Enrollment

- ▶ Students are responsible for the application fee for Cameron University.
- ▶ Students with a minimum composite of 20 on the ACT can take classes for free. Books and fees **are not** included.
- ▶ Students must have a sub-score of at least 19 in reading.
- ▶ Students must provide their own transportation.
- ▶ If you take one class at CU, you will take 5 classes at EHS. 2 classes at CU - 4 classes at EHS.

Dual Credit

- ▶ Students will receive high school credit for classes taken at Cameron University. These grades will be placed on your transcript.
- ▶ See your counselor if you are interested and to see if you qualify.
- ▶ It is not advisable for students enrolled in Pre-AP Trig/Calculus to take College Algebra! (Your ACT score in math will probably be high enough to go into Calculus)

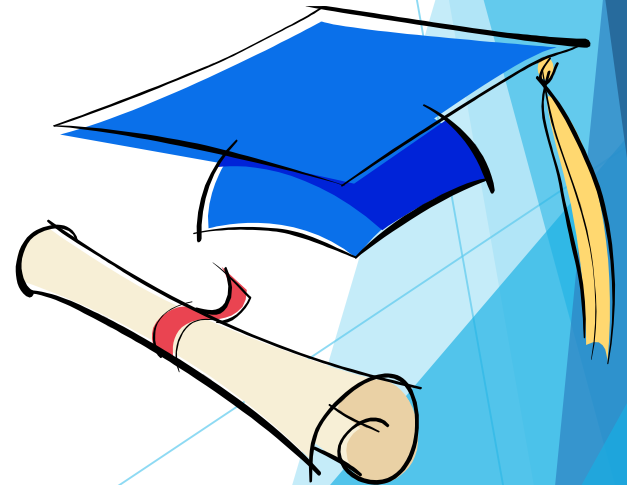
Your Final Year

- ▶ Students should try to select classes that meet their interests and prepare them for a career path.
- ▶ Although there are graduation requirements, students can select types of electives that will help them get better prepared.

Your Final Year

12th grade

- ▶ English (English IV or AP English Literature)
- ▶ Math (recommended)
- ▶ Elective
- ▶ Elective
- ▶ Elective
- ▶ Elective
- ▶ Elective



Elective Courses

- ▶ There are many elective courses for Eisenhower students. When looking through the courses, pay close attention to the Grade Level and Prerequisites.
- ▶ **Consider Internship**

Technology Center Students

***Tech Applications *Tech Interviews *Tech Selection**

- ▶ Must be 11th or 12th grade status
- ▶ Have good attendance
- ▶ Have good behavior
- ▶ Have a strong desire to learn the skills of a trade

Pre-Enrollment Procedure

- ▶ Students take the enrollment bulletin home
- ▶ Students *and* parents review the course offerings, making sure that students select the classes that best help them meet their goals.

12th Grade Pre-enrollment

- ▶ Counselor will sit outside your English Class beginning Tuesday.
- ▶ Have page 34 of your enrollment bulletin completed.
- ▶ You will only have five minutes.
- ▶ Review bulletins tonight, if you have questions, see me tomorrow & Friday.

Schedule Changes

- ▶ Student requests for schedule changes must have principal approval after May 19th.
- ▶ Once school starts next year, all schedule changes will be principal initiated.
- ▶ Schedule change requests may be made during the first 10 days of school for the following reasons only: To make a up a failure, computer error, credit earned in summer school, lack prerequisite

Select your Classes Wisely

- ▶ Select your classes based on your educational goals!
- ▶ If you lose your Enrollment Bulletin, go to the school website www.ikeeagles.org to view course selections.

The background features abstract, overlapping geometric shapes in various shades of blue, ranging from light sky blue to deep navy blue. These shapes are primarily located on the left and right sides of the frame, creating a modern, dynamic feel. The central area is a plain, light grayish-white.

Any Questions?