

# Deer Parent Involvement

2018-

2019

AT THE END OF THE DAY, THE  
MOST OVERWHELMING KEY TO A  
CHILD'S SUCCESS IS THE POSITIVE  
INVOLVEMENT OF PARENTS.

JANE D. HULL

## Ideas on Improving Communication:

**Parent Teacher Conferences**

**Engaging Events**

**Digital Learner Inclusion in the classroom**

**Monthly Parent Helper Handouts**

**Parent Center (resources)**

**Volunteer opportunities**

**Collaborative Meetings for Parent Ideas (Antler Parent Alliance)**

**Improved School website**

**Academic Newsletters**

**Remind 101**

**Appropriate Social Media**

## **Antler Parent**

### **Alliance Plans:**

- **August**
- School decorations, painting sidewalk posts
- **September**
- Grandparents Day
- **October**
- Oktoberfest on 20<sup>th</sup>
- **November**
- Veterans Day Celebration 9th
- Angel Tree
- **December**
- Christmas Extravaganza 7th
- Christian Food Room donation operation
- **January**
- 100 Days of School Celebration 18th
- **February**
- Valentine Messages Fundraiser
- **March**
- Dr. Seuss Birthday 1st
- **April**
- Poetry Out Loud Recital 12th
- **May**
- **Teachers Appreciation**

Supporting Our Youth

## Schools v. State 2018

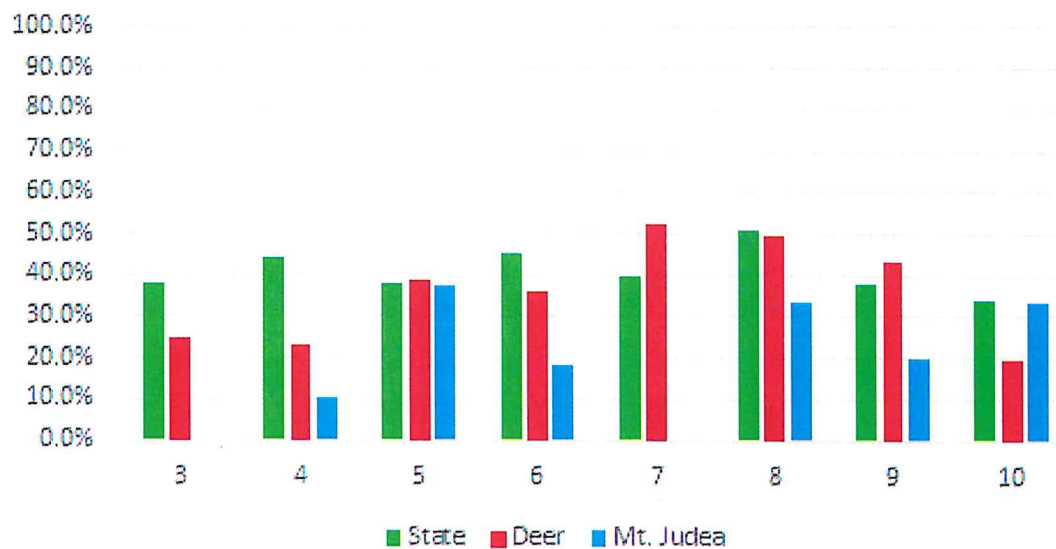
\*MJ 3rd & 7th no reporting data from ADE - Restricted Value <10

Using ADE's Preliminary Data

### English Aspire Spring 2018



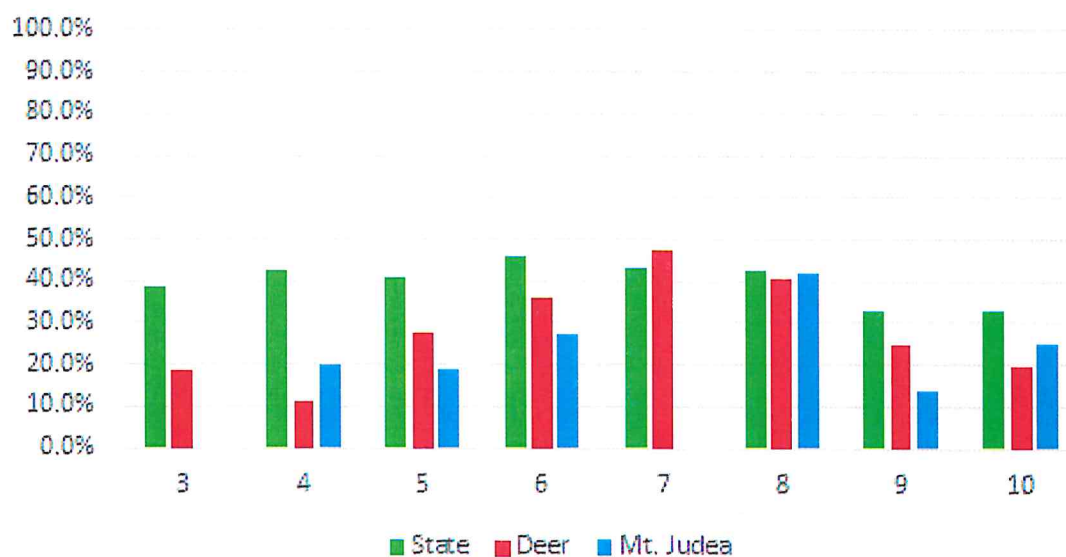
### Reading Aspire Spring 2018



### Math Aspire Spring 2018



### Science Aspire Spring 2018







## 2017 - 2018 • Accountability At-a-Glance • Mt. Judea K-12 School

### Contact Information

Mt. Judea K-12 School | Deer/Mt. Judea School District  
Principal: Brenda Napier | Superintendent: Andrew Curry  
PO BOX 40 Mt. Judea, AR 72655-  
<http://deermtjudea.k12.ar.us> | (870) 434-5362

### Student Information

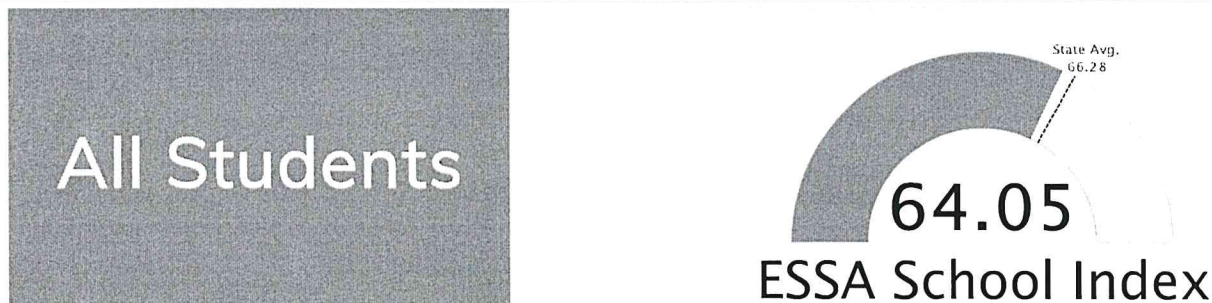
<b>Grades</b>	<b>K - 12</b>	<b>Total Enrollment</b>	<b>124</b>
Black	1.61 %	English Learners	0.00 %
Hispanic	0.81 %	Low-Income	86.29 %
White	94.35 %	Special Education	15.32 %

## Public School Rating Score (State Accountability: A-F Letter Grade)

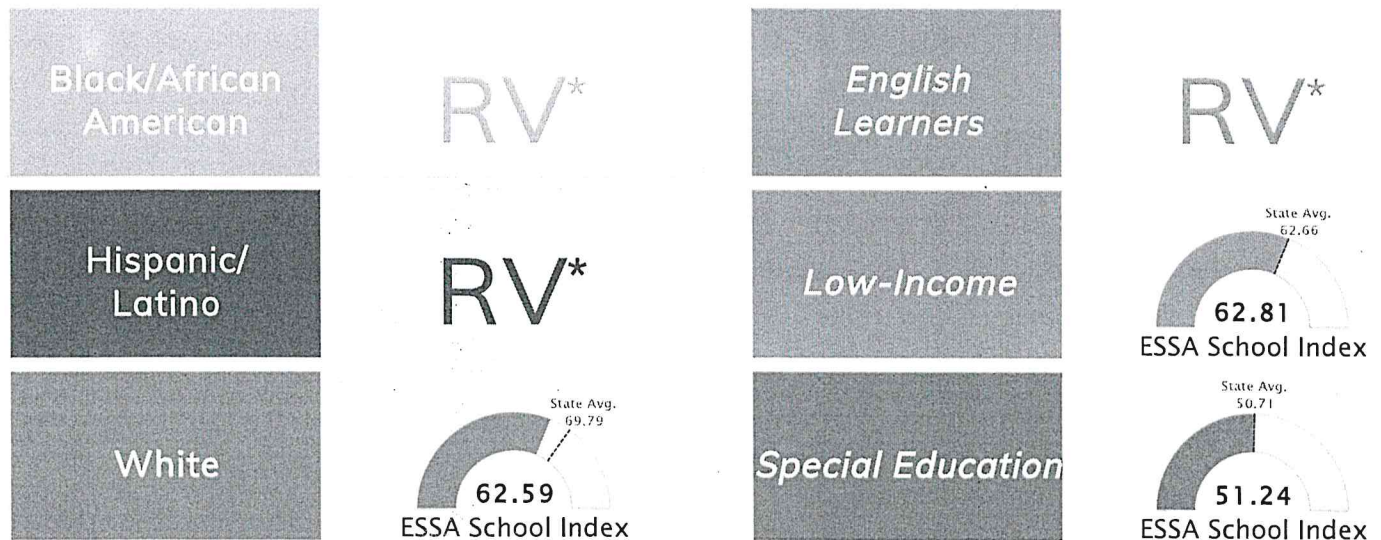


\* Alternative Education (AE) program students included in attendance zone for school rating

## School Performance on the ESSA School Index Score (Federal Accountability)



Graph represents where scores fall in comparison to state averages. For more information about the Every Student Succeeds Act and the ESSA School Index, visit [arkansased.gov](http://arkansased.gov).



Note: Full color represents score

\*RV = Restricted Value for sub-pops size < 10

Prepared by the Arkansas Department of Education





## 2017 - 2018 • Accountability At-a-Glance • Deer K-12 School

### Contact Information

Deer K-12 School | Deer/Mt. Judea School District  
Principal: Elvis Keith Middleton | Superintendent: Andrew Curry  
PO BOX 56 Deer, AR 72628-  
<http://deermtjudea.k12.ar.us> | (870) 428-8110

### Student Information

Grades	K - 12	Total Enrollment	235
Black	0.00 %	English Learners	0.00 %
Hispanic	2.13 %	Low-Income	77.87 %
White	89.36 %	Special Education	11.06 %

## Public School Rating Score (State Accountability: A-F Letter Grade)

State  
Accountability

65.78

Public  
School  
Rating

C

Rating  
Scale

A = 73.22 and Above  
B = 67.96 - 73.21  
C = 61.10 - 67.95  
D = 52.95 - 61.09  
F = 0.00 - 52.94

\* Alternative Education (AE) program students included in attendance zone for school rating

## School Performance on the ESSA School Index Score (Federal Accountability)

All Students



Graph represents where scores fall in comparison to state averages. For more information about the Every Student Succeeds Act and the ESSA School Index, visit [arkansased.gov](http://arkansased.gov).

Black/African  
American

RV\*

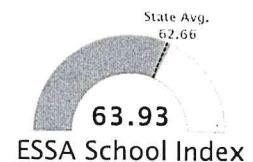
English  
Learners

RV\*

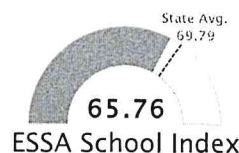
Hispanic/  
Latino

RV\*

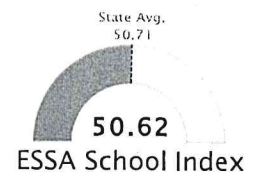
Low-Income



White



Special Education



Note: Full color represents score

\*RV = Restricted Value for sub-pops size < 10

Prepared by the Arkansas Department of Education



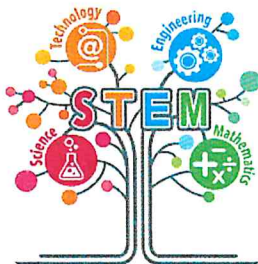
# Federal & NSL Funding 2018-2019



Title 1 - Part A of the ESEA provided financial assistance to local educational agencies and schools with high numbers or high percentages of children from low-income families to help ensure that all children meet challenging state academic standards.



Title 2a - The purpose of the program is to increase academic achievement by improving teacher and principal quality. This program is carried out by: increasing the number of highly qualified teachers in the classrooms; increasing the number of highly qualified principals in schools; and increasing the effectiveness of teachers and principals by holding LEAs and schools accountable for improvements in student academic achievement.  
DMJ uses this funding for professional development and academic coaching from ASPRC.



Title 4 - Student Support & Academic Enrichment (SSAE) - Provide access to a well rounded education, improve conditions for learning and improve the use of technology (PD).  
DMJ uses this funding for supplemental materials/supplies for STEM classroom activities, AP/Concurrent Credit courses, drug, bullying, violence prevention and character education materials.



Small Rural School Achievement Grants (SRSA) - The purpose of the SRSA program is to provide rural LEAs with financial assistance to fund initiatives aimed at improving student academic achievement.



National School Lunch Act Funding (NSL) - Also known as school poverty funding, is the part of the state funding package for schools that is targeted to low income students. The number of students eligible for free/reduced lunches in each school district is used to set the NSL funding for that district. That money is used to provide services and programs to benefit low income students.

DMJ uses this funding for salaries, materials and supplies and new this year the district will be using a portion of the funds to pay for the lunchroom cost in the new provision two lunch program.