

PRINCIPAL'S MESSAGE



Winter Break

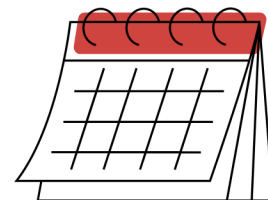
Welcome to one of the busiest times of the year! For many students, the chaos of December is extremely difficult. We often see increased behavior issues and decreased work completion. Thank you for your extra support and hard work in supporting both the students and staff at Perry Elementary. From helping to stuff stockings and providing special snacks for parties to providing donuts and handwritten notes of encouragement, the extra support does not go unnoticed and is greatly appreciated!

Over the next two weeks, enjoy the special time with family and friends. Reconnect with loved ones from far away. Play games, drink hot chocolate, and watch funny movies as a family. Rest, relax and read, read, read! The gift of time can't be done over or rewound, take advantage of it.

**Warm Wishes for the Holiday Season!
Mrs. Staib**

UPCOMING EVENTS

- Dec 16-20 - Half Days - 11:10 Dismissal
- Dec 21 - Start of Winter Break
- Jan. 4 - Return to School
- Jan. 13 - No School
- Jan. 16 - No School



NEW BUS DISMISSAL

Thank you for your support with the change in our bus line up at the end of the day. Things are running smoothly! We will continue the same dismissal process in January.

