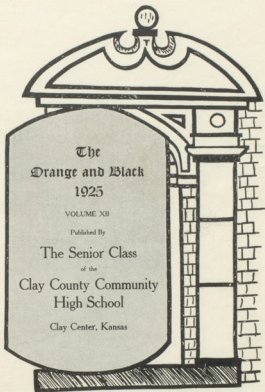


Remember me to
Helen, Mary and
Thomas and all
the family.



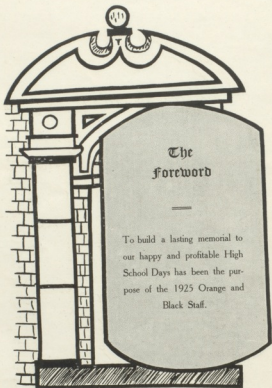
The
Orange and Black
1925

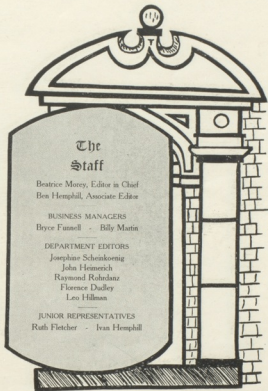
VOLUME XII

Published By

The Senior Class
of the
Clay County Community
High School

Clay Center, Kansas





The Staff

Beatrice Morey, Editor in Chief
Ben Hemphill, Associate Editor

BUSINESS MANAGERS

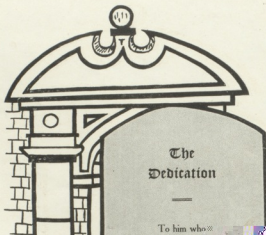
Bryce Funnell - Billy Martin

DEPARTMENT EDITORS

Josephine Scheinkoenig
John Heimerich
Raymond Rohrdanz
Florence Dudley
Leo Hillman

JUNIOR REPRESENTATIVES

Ruth Fletcher - Ivan Hemphill



The
Dedication

To him who

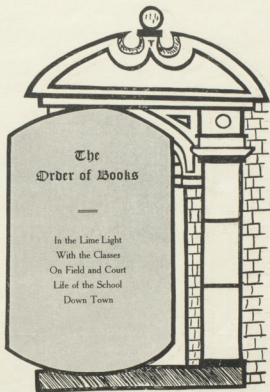
has so willingly helped us,

Sheldon Frick,

a friend to all,

we dedicate the 1925

Orange and Black



The
Order of Books

—
In the Lime Light
With the Classes
On Field and Court
Life of the School
Down Town

In Memoriam

Dr. H. R. Shumard

Secretary

Board of Education

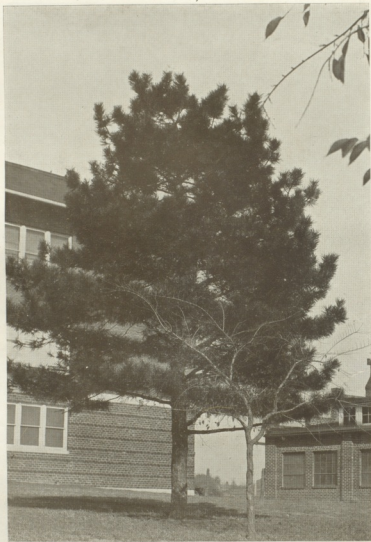
Elizabeth Dodson

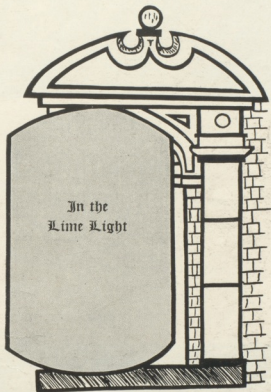
Freshman

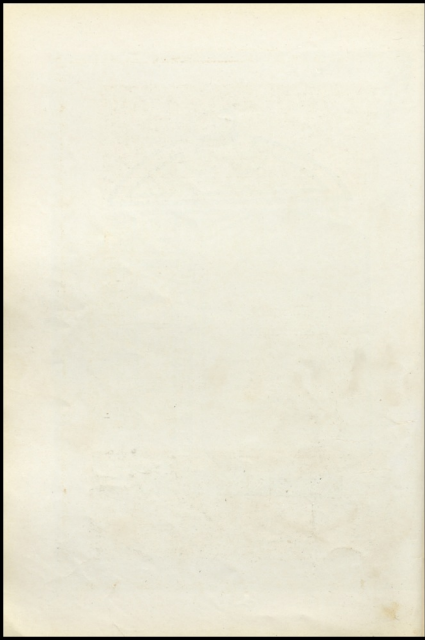














Board of Trustees.

O. U. NEED
Oak Hill

W. F. HANSON
Morganville

IONA HAHN
Clay Center

W. C. MILES
Green

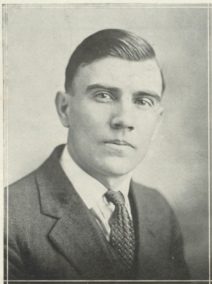
H. R. SHUMARD
Clay Center

F. O. OBERG
Clay Center

F. W. TODD
Exeter



Faculty



SHELDON FRICK, Principal,
University of Kansas, A. B.



FLORA AKINS, B. S.
Kansas State Teachers' College
English

ELAINE FAULKNER, B. M.
Kansas State Teachers' College
Music

GEORGINA BLEAKLEY, A. B.
University of Kansas
American History

PAULA FLYNN, A. B.
St. Mary of the Woods
Foreign Languages

MARY CARTER, A. B.
Kansas Wesleyan University
Latin

CLINTON GUY, B. S.
Kansas State Agricultural College
Vocational Agriculture

BETHEL CORDER, A. B.
Baker University
Normal Training

JEAN HANNA, B. S.
Kansas State Agricultural College
Mathematics



Glad to
have had
the opportunity
of knowing
you.
Polly Hedges



POLLY HEDGES, B. S.
Kansas State Agricultural College
Home Economics

SUE V. HEMPHILL
Kansas State Teachers' College
Kansas State Agricultural College
Commercial

IVY KRETZMEIER, A. B.
Baker University
English

FRANCES McCUNE, A. B.
University of Kansas
Biology

MILDRED O'MEARA, A. B.
University of Kansas
History

C. M. OPPI
Kansas Wesleyan University
Typewriting

EDNA ROBINSON, A. B.
Washburn College
English

MRS. S. A. SIEWERT, B. L., A. M.
Williamette University
Bible



*There is
a new geometry
book I had the
privilege of working with
Bess and Mrs. Edith Steininger*

ORANGE & BLACK



EDITH STEININGER, A. B., A. M.
Kansas University
Mathematics

ERNEST TOLIN, B. S.
Kansas State Teachers' College
Manual Training

H. W. STEININGER, A. M.
Central Wesleyan College
Music

V. R. VERGADES, A. B., A. M.
Oberlin College
Physical Science

MADELINE JOHNSTON
Commercial Assistant.



Round School.



G. B. HUSTONS



March! March!



March! March!



March! March!



March! March!



March! March!



March! March!



March! March!



March! March!



March! March!



March! March!



March! March!



March! March!



March! March!



March! March!

School Days



5th Ave Bus



Gypsy Riders



onion-headers



Sweethearts



Whoopee I'm a



MINNIE WHEEL



Which'll u have?



a Good Sport



Charles



Walter



Nothing Done



When We Were young!



Spoken for



Off to the City



Parked



BELOIT



ST. JOHN'S



BELLVILLE



MANHATTAN



ARMISTICE DAY



ARMISTICE DAY



ARMISTICE DAY



ARMISTICE DAY - BELLVILLE-BETWEEN HALVES



CLAY'S Z Z



SITTIN' PRETTY



DAILY DOZEN



ARMS FULL



MILTONVALE LINEUP

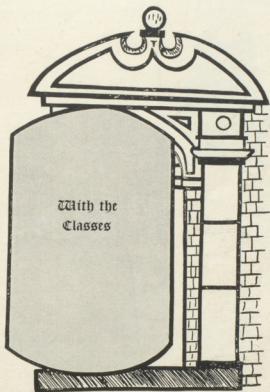


PLEASANT PLEASE



OAKHILL LINEUP









Seniors



OFFICERS.

President,	- - - - -	Enid Smith
Vice-President,	- - - - -	Bryce Funnell
Secretary,	- - - - -	Arlene Logback
Treasurer,	- - - - -	Cloyd John
Sponsors,	- - - - -	Miss McCune, Miss Bleakley, Mr. Vergades

The Senior Class, although the smallest in enrollment, has taken the leading part in all school activities. They won first place in the contest sales for foot ball and for concert tickets. In athletics and in practically every organization the leader and members carrying most of the work have been Seniors. Credit for putting out the School Annual must also go to this class. In other lines as well, the Seniors have been active as a Class Play, a Hallowe'en Party, an all-day Class Picnic at May Day and the regular Commencement Activities including Class Day Program and a Farewell Party.

COMMITTEES.

Ring and Pin—Raymond Rohrdanz, Elpha Panton, Margaret Hanna.

Social—Ben Hemphill, Frank Meek, Everett Griffiths, Nell Senn, Florence Dudley, Rachel Dunham.

Invitations—Enid Smith, Arlene Logback, Bryce Funnell.

Finance—Ben Hemphill, Frank Meek, Everett Griffiths, Florence Dudley, Rachel Dunham, Lillian Carson.

Picnic—John Helmerich, Transportation; Vera James, Menu; Ione Gray, Amusement; Raymond James, Fire Builders; Berndette Finley, Cooking Utensils; Alma Ott, Cook; Lavone Goheen, Service.

Commencement—Miss McCune, Miss Bleakley, Florence Dudley, Nell Senn, John Helmerich, Raymond Rohrdanz.



MYRTLE EVELYNNE ANDERSON
Commercial; G. R. 22, 23, 24, 25; Booster Club 24; The Hottentot 24.



MINNIE BLETSCHER
Commercial; G. R. 22, 23, 24, 25; Booster Club 23, 24.



WILMA CLARK
Normal; transferred from Green H. S. 24; G. R. 25; Chaxton Club 25.



DOROTHY COOK
Normal; G. R. 22, 23, 24, 25; Chaxton Club 24, President 25; Indian Summer 22.

LILLIAN M. CARSON
General; G. R. 22, 23, 24, 25; Concordia Conference 24; Booster Club 22, 23, 24, 25; Glee Club, 22, 23, 24, 25; Chaxton School 25; American Girl 22; Indian Summer 22; Maid and Middy 24; Gypsy Rover 25; Triangular Contest Teams; Mixed Chorus 24, 25; Girls' Sextette 22, 25; Girls' Quartette 24; Junior Social Committee 24; State Contest, Emporia 25; Vocal Soloist Girls Quartette.

MILDRED DAVIES
Normal; G. R. 22, 23, 24, 25; Chaxton Club 24, 25.

MINNIE ALICE CARPENTER
General; G. R. 21, 22, 23, 24, 25; Chaxton Club 22, 23, 24; Indian Summer 22.

THOMAS DOYLE
Commercial; Foot Ball 24, 25; Track 22; H. Y. 21, 22, 23, 24, 25; Typewriting contest 23; Band 25; Glee Club 25.





FLORENCE E. DUDLEY

Collegiate; Annual Staff Soap Editor 25; G. R. 22, 23, 24, 25; G. R. Cabinet 22; Booster Club 22, 23, 24, 25; President 25; Glee Club 22, 23, 24, 25; Boomerang 24; Hottentot 24; American Girl 22; Indian Summer 22; Maid and Middy 24; Gypsy Rover 25; Triangular Contest Teams; Glee Club 24, 25; Sextette 22; Quartet 24; Junior Social Committee 24; Senior Social Committee 25; State Contest, Quartet 25.

RACHEL E. DUNHAM

Collegiate; transferred from McPherson Academy 22; Promoter Editor 25; G. R. 24, 25; Secretary 25; Conference, Topoka, 24; Booster Club 24, 25; D. S. Treasurer 24; Hottentot 24; Charm School 24; Senior Social Committee.

LEONARD O. ERICKSON

Commercial, Accounting and Secretarial Course; Basket Ball 25; Hi Y 22, 23, 24, 25; Orchestra 22; Hottentot 24; Junior Decoration Committee 24; Underwood Typing Awards 25.

SIGRID E. BANKS

Normal; transferred from Morganville H. S. 24; G. R. 25.

BERNDETTE FINLEY

Commercial; G. R. 22, 23, 24, 25; G. R. Cabinet 24; Social Committee 22; Chairman Social Committee 23; Booster Club 22, 23, 24, 25; Glee Club 25; Chorus 22; Tailor Made Man 23; Hottentot 24; Indian Summer 22; Gypsy Rover, 25; Junior Banquet Program Committee Chairman 24.

HARRY FRAZIER

Collegiate; Class Treasurer 22; Annual Staff 24; Foot Ball 22, 23, 24, 25; Basketball 22, 24, 25; Track 21, 22, 23; Track Captain 22; Hi Y 21, 22, 23, 24, 25; Cabinet 24, 25; Voc. Ag. Club 22; Athenian Literary Society 23; Vice-president 23; Seventeen 24; Triangular Contest Teams; Track Team 22, 23.

IRVING FUNNELL

Collegiate; Secretary 22; Vice-president 23; Bus. Mgr. Annual Staff 25; Promoter Staff 23, 24; Hi Y 22, 23, 24, 25; Cabinet; Program Committee 23; Chairman Service Committee 24; Chairman Program Committee 25; Conference 22, Camp Steadway 22; Camp Wood 24; Booster Club 22, 24, 25; Debate 22; Band 22, 23, 24, 25; Orchestra 22, 23, 24, 25; Glee Club 24, 25; Nothing but the Truth 23; Hottentot 24; Boomerang 24; Maid and Middy 24; Gypsy Rover 25; Triangular Contest Teams; Orchestra 22, 24, 25; Mixed Chorus 24; Announcement Committee Senior Class.

LILLIAN GAY

Commercial; State Typewriting Contest, Salina, 21; Glee Club 25; Chorus 22, 23; Indian Summer 22; Sextette 25.





PEARL GILBERT

General; transferred from Boyers, Colo.
24; G. R. 25; Chama School 25.

LAVONE GOHEEN

Collegiate; Class Secretary 24; G. R. 22,
23, 24, 25; Booster Club 25; Orchestra 24,
25; Glee Club 23; American Girl 23; Triang-
ular Contest Teams; Orchestras 24; Live
Wire Club 23.

IONE GRAY

General; Class vice-president 21; Pro-
moter Local Editor 23; G. R. 21, 22, 23, 25;
Cabinet; Chairman Program Committee
23; Conference Topeka 22; Booster Club
Vice-president 23; Orchestra 25; Glee Club
23, 25; American Girl 23; Piano Accom-
panist Indian Summer; Gypsy Rover 25;
Journalism Conference Lawrence 23; Jun-
ior Banquet Decorating Committee 23.

FLORENCE GRIGWIRE

Home Economics; G. R. 22, 23, 24, 25.

WILFRED GREENLEE

Collegiate; Promoter Circulation Man-
ager 24; Hi Y 21, 22, 24, 25; Latin Club 21;
Live Wire Club 23.

HAROLD GREENLEE

Collegiate Foot Ball 24, 25; Hi Y 22, 23,
24, 25.

EVERETT GRIFFITHS

Commercial; Promoter Business Mgr.
25; Hi Y 22, 23, 24, 25; Debate 25; Hotten-
tot 24; Senior Social Committee.

MARGARET HANNA

Collegiate; Class Vice-president 22; G.
R. 22, 23, 24, 25; Booster Club 22, 23;
American Girl 22; Indian Summer 22;
Social Committee 24; Ring Committee 25;
Live Wire Club 22; Latin Club 22.





JOHN HEIMERICH

Collegiate; Annual Athletic Editor 25; Promoter Staff 24; Foot Ball 25; Basket Ball 25; Hi Y 22, 23, 24, 25; Cabinet 24, 25; Vice president Hi Y 24; President Hi Y 25; Conference Camp Wood 24; Older Boys' Conference, Lawrence 24, Manhattan 25; District Conference, Clay Center 23; Band 24, 25; Hottentot 24; Live Wire Club 23; Latin Club 22.

DEN HEMPHILL

Collegiate; Class president 22; Asst. Editor Annual Staff 25; Promoter Staff, Editor and Bus. Mgr. 24; Hi Y 22, 23, 24, 25; Band 23, 24, 25; Orchestra 24, 25; Glee Club 24; Mask and Middy 24; Chairman Sr. Social Committee; Junior-Senior Banquet Committee.

MURIEL HILL

Normal; G. R. 22, 23, 24, 25; Claxton Club 24, 25.

MILDRED HJELM

Commercial, Accounting and Secretarial Course; G. R. 22, 23, 24, 25; State Typewriting Contest 25; Hottentot 24.

TREVA ARNDELLA HJELM

Normal; G. R. 22, 23, 24, 25; Claxton Club 24, 25.

GERALDINE JACKSON

Commercial; G. R. 22, 23, 24, 25.

RAYMOND JAMES

Voc. Ag.; Class Vice-president 24; Promoter Bus. Mgr. 25; Hi Y 22, 23, 24, 25; Cabinet 24, 25, Secretary 24, Treasurer 25; District Conference, Clay Center 23; Manhattan 22; Voc. Ag. Club; President H. Sec. 23, Treas. 23, Vice-president, 24; Booster Club 24, 25; Stock Judging Team 23; Junior Banquet Decoration Com. 24.

VERA JAMES

Commercial; transferred from Colby 22, Blount 23; Basket Ball 23; G. R. 23, 24, 25, Cabinet 25; Chairman Finance Committee 25; Conference Topeka 24; Concordia 25; Hottentot 24; Junior Banquet Committee 24.





CLOYD JOHN

General; transferred from Lawrence;
Class Treasurer 25; Foot Ball 25; Hi Y 25.

LAWRENCE JOHNSON

Commercial; Basket Ball 22, 25; Track
23; Hi Y 22, 23, 24, 25; Hottentot 24; Junior
Class Play 24.

SARAH JONES

Normal; G. R. 22, 23, 24, 25; Claxton
Club 24, 25.

ROMANA KAPPELMAN

General; G. R. 22, 23, 24, 25; Booster
Club 23, 24, 25; Orchestra 22, 23, 24.

FITZHUGH KEENER

Collegiate; transferred from Dobru
H. 8; Promoter Circulating Mgr. 25; Bas-
ket Ball 25; Hi Y 25; Booster Club 25.

FLORA KLEIN

General; G. R. 22, 23, 24, 25; Glee Club
24; American - and 22.

ALFRED LENHART

Commercial; Hi Y 22, 23, 24, 25; Con-
ference 23; Booster Club 24, 25.

ALBERT M. LENHART

Commercial; Hi Y 22, 23, 24, 25; Con-
ference 23; Booster Club 24, 25.





CLAYTON F. LEVEQUE

Collegiate; Foot Ball 22, 23, 24, 25; Basketball 24; Hi Y 22, 23, 24, 25; Voc. Ag. Club 21; Literary Society; Live Wire Club President last semester; Hottentot 24.

BERTHA MACKENDER

Commercial; G. R. 22, 23, 24, 25; Hemington Typewriting Awards 25.

AILENE DOROTHY LOGHACK

Collegiate; Secretary 25; G. R. 22, 23, 24, 25; Hooster Club 24, 25; Chorus 22, 24; Hottentot 24; Maid and Middy 24.

CATHERINE MARSH

Normal; G. R. 22, 23, 24, 25; Claxton Club 24, 25.

ELMER LUDWIG

Normal; transferred from Green R. R.; Hi Y 25; Claxton Club 25.

HELEN MARSH

Normal; G. R. 22, 23, 24, 25; Secretary 24; Claxton Club 24, 25; Dramatic Club 23.

LESTER MANWARREN

General; Promoter Staff 24, 25; Foot Ball 22, 23, 24, 25; Track 23; Hi Y 22, 23, 24, 25; Com's Course 24; Band 24, 25; Hottentot 24; Triangular Contest Teams 23; Junction City, Manhattan, Clay Center.

BENE EDITH MARSHALL

Normal; G. R. 22, 23, 24, 25; Claxton Club 24, 25; Art 22; Glee Club 23, 24; Maid and Middy 24; American Girl 23; Triangular Contest Teams: Mixed Chorus 24.





MARY MARTIN

Normal; G. R. 22, 23, 24, 25; Claxton Club 24, 25.

WILLIAM H. MARTIN

Collegiate; Class treasurer 24; Annual Staff Bus. Mgr. 25; Promoter Asst. Ad. Mgr. 24; Hi Y 22, 23, 24, 25; Cabinet; Chairman of Program Comm. 23; Hi Y Treas. 24; Secretary 25; Conference; Men-Sutton 23; Concordia 25; Booster Club; Cheer Leader 24, 25; Debate 22; Band 22, 23, 24, 25; Drum Major 25; Orchestra 24, 25; Glee Club 24, 25; Nothing But The Truth 22; Tailor Made Man 23; Boomerang 24; Hottentot 24; Charm School 25; Mad and Middy 24; Gypsy Rover 25; Triangular Contest Teams; Orchestra 24, 25; Band, State Contest Topoka.

IRABEL McCONNELL

Normal; G. R. 22, 23, 24, 25; Claxton Club; Vice-president 24, 25; Dramatics 23, 24; Hottentot 24.

THELMA McWILLIAMS

Normal; G. R. 22, 23, 24, 25; Booster Club 24; Claxton Club 24, 25; Dramatics 23, 24; Glee Club 23; Declamation 23, 24; American Girl 23.

ANNA A. McKENNA

Collegiate; G. R. 23, 24, 25; Booster Club 24, 25; D. S. 24.

FRANK H. MECK

Collegiate; Hi Y 22, 23, 24, 25; Band 25; Junior Basketball Committee 24; Senior Social Committee 25.

BEATRICE B. MOREY

Collegiate; Class President 24; Annual Staff Editor 25; G. R. 22, 23, 24, 25; Cabinet 23, 24; President G. R. 25; Conference Salina 23; Concordia 24, 25; Booster Club; Treasurer 24; Live Wire Club President 24, 25.

MYRTLE MORRIS

General; transferred from Riley H. S. 24; G. R. 25.





FRED MULLEN, JR.

General; Hi Y 22, 23, 24, 25; Hi Y Conference 23; Voc. Ag. Club 23, 24; Chaxton Club 23, 24.

ALMA OTT

Commercial; G. R. 22, 23, 24, 25; Booster Club 23; Glee Club 22.

CLIFFORD VAN SLYKE

Collegiate; Hi Y 22, 23, 24, 25; Conference Chay Center 23; Booster Club 23; Band 23, 24; Orchestra 23, 24, 25; Triangular Contest Teams; Orchestra 24.

VEER PAGE

Commercial; Promoter Staff Bookkeeper 25; Hi Y 22, 23, 24, 25; Booster Club 24, 25; Orchestra 23, 24, 25; Triangular Contest Teams; Orchestra Contest 24, 25.

LILLIAN OLSEN

General; G. R. 21, 25; Chaxton Club 22; Glee Club 22, 25; Maggie Pepper 23; Gypsy Rover 25.

ELPHA M. PANTON

Normal; G. R. 22, 23, 24, 25; Chaxton Club 24, Secretary 25; Art Club 22; Ring and Pin Committee 25.

MYRNA H. OPPENLANDER

Commercial; G. R. 22, 23, 24, 25; Glee Club 23, 24, 25; Maid and Middy 24; Gypsy Rover 25.

MARJORIE PETERSON

Normal; transferred from Clifton 23; G. R. 23, 24, 25; Chaxton Club 24, 25; Glee Club 24; Maid and Middy 24.





ONIETA V. PITTS DOVE

Collegiate; transferred from Concordia 22; Assistant Editor Promoter 23; Journalism Conference Lawrence 24; Promoter Staff 24; G. R. 22, 23, 24, 25; G. R. Cabinet 25; Booster Club 24, 25; Chorus 24; Boom-erang 24; Hottentot 24.

ALICE PRIESNALL

Normal; G. R. 22, 23, 24, 25; Claxton Club 24, 25; Glee Club 24; Maid and Middy 24.

HARVEY RAMSEY

Commercial; Promoter Staff 24; Foot Ball 21, 24, 25; Basket Ball 24, 25; Track 21, 24; H. Y. 22, 23, 24, 25; Band 22, 23, 24, 25; Glee Club 24, 25; Maid and Middy 24; Cypar. Rover 25; Triangular Contest Teams; Track 23, Mixed Chorus 24.

ALPH C. REID

Collegiate; Promoter Staff 24, 25; Foot Ball 21, 23, 24; Captain 24; Basket Ball 22, 24, 25; Track 22, 23; H. Y. 22, 23, 24, 25; Triangular Contest Teams; Track 22, 23.

RALPH REID

Collegiate; Foot Ball 22, 23, 24, 25; Basket Ball 24, 25, Captain 25; H. Y. 22, 23, 24, 25.

RAYMOND ROHRDANZ

Collegiate; Class treasurer 22; Annual Dept. Editor 23; H. Y. 22, 23, 24, 25; Cabinet Service chairman 23, Social chairman 25, President 24; Conference; Manhattan 23, Lawrence 24; Voc. Ag. Club 22, 23, President 23; Booster Club 25; Stock Judging Team 23; Hottentot 24; Junior-Senior Banquet Decorating Committee chairman 24; Senior Ring committee chairman 25; L. V. Wire Ring Club President 22.

RALPH ROSIRKA

General and Agriculture; Promoter Staff Dis. and Adv. Dept. 24; H. Y. 22, 23, 24, 25; Voc. Ag. Club Treas. 25, Sec. 23; Claxton Club 23; English Club 23; Stock Judging team 2nd place; Band 21.

EDNA ROBINETTE

Normal; G. R. 22, 23, 24, 25; Claxton Club 24, 25.





HERBERT W. RUNDQUEST

Commercial; Hi Y 22, 23, 24, 25.

JOSEPHINE M. SCHENKENBERG

Normal; Annual Senior Editor 25; G. R. 22, 23, 24, 25; Cabinet 25; Claxton Club 24, 25.

NELL JO. SHINN

Collegiate; G. R. 22, 23, 24, 25; Booster Club 23, 24; Vice-president 25; Glee Club 23, 24; Maid and Middy 23; American Girl 24.

JOE SHELTON

Commercial; transferred from Jet, Okla. 22; Post Hall 24; Hi Y 23, 24, 25.

ENID SMITH

General; Class Rec. 23, Pres. 25; G. R. 22, 23, 24, 25; G. R. Sec. 22; Conference-Topoka 24; Booster Club 23, 24, 25; Claxton Club 24; Art Club 22; Orchestra 22, 23, 24, 25; Glee Club 23, 24; Boomerang 24; Hotentot 24; Charm School 25; Maid and Middy 24; Gypsy Rover 25; Triangular Contest Teams; Orchestra 22, 23, 24, 25; Chorus 24.

HAZEL STODDARD

General; transferred from Manchester 22; G. R. 24, 25; Booster Club 24, 25.

DOROTHY STODDARD

Normal; transferred from Manchester 22; G. R. 22, 23, 24, 25; Claxton Club 23, 24, 25.

HAROLD TAYLOR

Commercial; Hi Y 22, 23, 24, 25.





ELMER KOCH

Commercial; Hi Y 22, 23, 24, 25; Conference; Older Boys, Manhattan 25; Concordia 23; Commercial Course State Typewriting Contest 25; Junior-Senior Banquet Decorating Committee 23.

ARRA WIEBIG

Normal; transferred from Carbondale H. S. 22; G. H. 23, 24, 25; Booster Club 24; Chaxton Club 24, 25; Hottentot 24.

ARNOLD OBERG

Commercial; Foot Ball 25; Track 23; Booster Club 24; Hi Y 22, 23, 24, 25; Glee Club 24, 25; Hottentot 23; Gypsy Rover 25.

RAMA YOUSSE

General; Hi Y 22, 23, 24, 25; Conference 23; Booster Club 23, 24, 25; Chaxton Club 23, 24; Dramatics 23; Literary Society 23; Band 23, 24, 25; Orchestra 24, 25; Glee Club 23, 24; Hottentot 24; Charm School 25; Boomerang 23; Maid and Middy 23.

WARREN WALQUIST

Normal; Hi Y 22, 23, 24, 25; Conference Clay Center 23; Booster Club 23, 24, 25; Chaxton Club 24, 25; Treasurer 25.

PAUL WOOD

Normal; transferred from Republic H. S. 24; Hi Y 25 Chaxton Club 25.

MAYNARD DAVIS

Collegiate; transferred from Leonardville H. S. April, 25.





Post Graduate

MAIGUEHUTE LEIGH GLADDEN

Collegiate; Promoter Staff 23, 24; G. R. 23, 24, 25; G. R. Conference, 23; Booster Club 23, 24, 25; D. S. Club 22; Dramatics 22, 23; Debate 24; Boys' Glee Club Pianist 24; Boomerang 23; Seventeen 24; Charm School 25; Operetta 22.

AVIS ROBINETTE

Commercial; Graduated from General; G. R. 22, 23, 24, 25; American Girl 23; Maid and Middy 24.

DELPHIA MUGLER

Commercial; Class officer 24; G. R. 22, 23, 24, 25; Booster Club 24; Athenian Literary Society; Glee Club 23, 22, 23; Maggie Pepper; Operetta 22.

CARMEN STEWERT

Collegiate; transferred from Denver H. S. 22; G. R. 22, 23, 24, 25; Literary Society 22; Promoter Staff 24.



THE TINY TIMES

NO. 1.

CLAY CENTER, KANSAS, Thursday, May 7, 1936

VOL. 1

Joe Sheldon Risks Life To Save Lady

Koch's Building Was Totally Destroyed By Fire. Loss Estimated at \$10,000.

Joseph Sheldon made himself the hero of the hour this morning when, at the risk of his own life, he entered the burning Mar-nelle Beauty Parlor rooms, fought his way through fire and smoke, and carried to safety, the proprietress, Miss Hazel Stoddard. Fire Chief Herbert Rundquist arrived on the scene too late to be of any assistance. The building was owned by Elmer Koch.

DRS. MARTIN & FUNNELL TO BUILD NEW OFFICES

In order to provide for their rapidly increasing practices, Drs. Martin and Funnell will erect a new building opposite the Taylor Print Shop. The main floor of the building will be occupied by the VANSLYKE & KEENER, Variety store. Offices will be rented by Verr Page, Auditor; W. Walquist, Dentist; Klein and Ott, Public Stenographers. The contract for building was let to LENHART & LENHART, General Contractors.

Rosiska May Become Famous

Mr. Ralph Rosiska of Kansas City, Mo., has invented a motorcycle that runs on hot air. This invention is the result of many experiments and tests. He has sold his patent right to the Paul Wood Motor Company, who will begin the immediate manufacture of the new motors. It is estimated that there will be a great demand for these new machines, since the fuel is so plentiful and cheap.

In The District Court

Myrtle Rundquist to Herbert Rundquist; transfer of property; \$1 and love and affection; north-east quarter of section 36.

Notice:—I will not be responsible for any debts contracted by my wife after June 1st.—Warren Walquist.

For sale:—A bicycle, by a boy with a leather seat. Phone 233.

Reporter Interviews Miss Bleakley for Historical Facts of Class of 1925

At the meeting of the C. C. C. H. S. Alumni Association last month, some one asked for the history of the class of 1925. Upon investigating it was found that no record of that class had been kept. In an effort to obtain the facts, an interviewer was sent to Kansas City to question Miss Bleakley. Miss Bleakley was formerly a history teacher in the Clay Center High School. Our reporter writes, "After searching out the Emanuel Home and asking for Miss Bleakley, I was very much surprised to see a very thin, grey-haired, old lady come tottering down the hall. I informed the good lady of my mission and asked if she could give the desired information. She sat down, and then starting, as if into the past, said, 'That class entered the high school in 1921, apparently with no special purpose, except, in a general way, to have a good time, and, if it was not too much trouble, to acquire a little knowledge. They seem to have carried out their program quite successfully, inasmuch as they did have a very good time and gained very little knowledge. However, the class grew in importance, and by the time they were Seniors, they were virtually running the whole school. They meddled with every branch of activities and everywhere met with success. They were a class of which their school might well be proud.' Here the old lady began to cough, and giving her my card and thanking her for the information, I caught the next street car to the city."

Miss Florence Grigwire and Miss Treva Hjelm of the Business College faculty, visited in Salina yesterday.

Mrs. Raymond James went to Kansas City to spend several days with her brother, Ralph Rosiska, and family.

Miss Lillian Olsen of the local Western Union is being transferred to the Morganville office.

Legislators Want Increase In Pay

Representative Rachael Hughes Would Raise Salary To \$5,000.

Representative Mrs. Rachael Dunham Hughes, has introduced a bill into the Legislature to raise the salaries of representatives to \$5,000 a year. She argues that a woman cannot support herself and her family on the present salary. If the bill passes the Legislature, it is expected that Governor Griffiths will veto it because there is no provision for a raise in the Governor's salary.

WEALTHY WIDOW WAS

ROBBED. NO CLEW YET
Last night, about midnight, someone entered the home of Mrs. Myrtle A. Dobbins, and stole jewels valued at about \$2,000. No trace of the thief has yet been found. Nightwatchman Harold Greenlee says that it must have happened about the time of his usual midnight nap, and does not know anything of the robbery. However, Detective Frank Meek is on the job now, and thinks he has a clue.

CITY WILL HAVE NEW STONE SCHOOL BUILDING

The Chamber of Commerce met yesterday evening to consider bids for a new stone school house to replace the one recently condemned by State Fire Marshal Leonard Erickson. The Chamber of Commerce took the initiative in the matter because the City School Board failed to act. President J. J. Hetmerich at the end of the meeting announced his resignation. C. C. John was elected to succeed him.

Was Hit By Ice Truck

Harvey Ramsey, manager of the Home Coal Co., was hit by an ice truck yesterday evening while on his way home from work, and his right leg was fractured. He was taken to the Municipal Hospital.

Lost:—An Apron, valued dearly. Liberal reward.—Lizzie McCune.

SOCIETY

We see in the New York Times that the pupils of Miss Enid Smith, celebrated violinist, gave a recital in Convention Hall several weeks ago. Miss Smith was formerly a citizen of this community.

Ladies' Aid

The Ladies' Aid Society of the First Baptist Church met with Mrs. Bertha Youse Thursday, assisted by Miss Romana Kappelman. Misses Wilma Clark, Muriel Hill, Florence Gregwire, Treva Hjelm, and Sarah Jones were leaders for the afternoon's gossip.

For Miss Gilbert

Miss Irene Marshall entertained a number of her golf-playing friends at the Country Club Wednesday in honor of Miss Pearl Gilbert of Manhattan. Those who enjoyed the afternoon were Misses Dorothy Cook, Isabel McConnell, Helen Marsh, Alice Pressnall and Marjorie Peterson.

Scheinkoenig-Reid

An extra-ordinarily romantic love affair ended this morning when Miss Josephine Scheinkoenig and Mr. Alph Reid were united in marriage. The ceremony took place at the home of the bride's parents, the Right Reverend Mr. Harry Frazier performing the ceremony. The bride is one of Clay Center's most popular girls in social circles. She is at present employed by the Mullen Insurance Agency. Mr. Reid is in charge of the Athletic Department at Baker University. Mr. and Mrs. Reid will move to Baldwin after a short honeymoon to Ladysmith and surrounding territory.

Birthday Party

Morcy Jones entertained a number of friends Friday, in honor of his fourth birthday anniversary. The guests met at two o'clock on the lawn and played games until late in the afternoon, when delightful refreshments were served to the little guests by Mrs. Bea Morcy Jones, assisted by Mrs. Catherine M. Sniffle. Those who enjoyed the occasion were Billy Martin Jr., Dorothy Jeanne Rohrdanz, Betty and Bobby Van Slyke, Rafael Reid, Jr., Arthur Chester Funnell, Marsh Sniffle, Ione Grey Kiljoy, Margaret Hannah Ros-

Come to Church
Sunday

First Baptist Church
Harry Frazier, Pastor. Regular evening worship, 8.00.

Methodist Church
H. Rohrdanz, Pastor. Revival meetings, beginning next Sunday and continuing two weeks under direction of Miss Minnie Carpenter.

Presbyterian Church
Temporary Pastor, Ralph Reid. Services 11:00 A. M., 8:20 P. M. Text "The Still Small Voice."

Music Club

The Music Club met with Miss Lillian Carson Thursday. The following program was given: piano duet, Miss Lillian Gay and Miss Mildred Davies; reading, Miss Thelma McWilliams; vocal solo, Miss Carson; flute solo, Miss Minnie Bletscher; piano solo, Miss Lillian Olsen, and a violin solo, Miss Lavone Goheen.

Install New Machine

Messrs. Ludwig and Manwarren, proprietors of the SHINEM SHINE PARLOR, went to St. Louis last week and bought a new popcorn machine. They assert that their new machine will pop corn twice the size of ordinary popcorn.

Notice to Music Pupils:—Miss Marguerite Glidden's pupils who have lessons coming on Thursday, will please go to her home instead of the studio.

Some of our readers will undoubtedly be interested in hearing that Mr. Leo Hillman has recently received the position of chief decorator for the John Wanamaker Stores, (Inc.), New York City, N. Y.

Arria Wiberg and Sarah Jones have both accepted positions as teachers in the Green High School. Clayton LeVeque returns for his second year as Athletic Director in this school.

Mrs. Onetta Pitts Dove returned to her home in Stanton, Va., after an extended visit with her parents, Mr. and Mrs. Pitts of Clay Center.

ka, Mike Senn Tooker, Helen Page, Harry, Jerry and Terry Frazier and Helen Arlene Hemp-

LOCALS

Mr. Rama Youse has been elected Sunday School Superintendent of the First Baptist Church of Clay Center.

Miss Carmen Stewert is taking post-graduate work in the Clay Center Business College this year.

Miss Wilma Clark of Abilene, Texas, is visiting in Clay Center in the home of Mrs. Myrna O. Sinker.

Miss Elpha Pantton, Postmistress at Oak Hill, was a business visitor in Clay Center Wednesday.

Miss Sigrid Eulbanks, who teaches French in the C. C. C. H. S. will make a tour of Europe in the coming summer.

Raymond Rohrdanz will leave June 15 to make a geological survey thru the Ozarks of Southern Missouri.

Miss Geraldine Jackson of San Francisco will come next week for a two months' visit with her parents.

Mrs. Senn returned to her home at Lasita after a week's visit with her daughter, Mrs. Mike Tooker.

Miss Thelma McWilliams and Miss Lillian Gay will leave Friday for Kansas City to be gone all summer on the White Chautauqua Circuit.

VAN SLYKE & KEENER
VARIETY STORE.

Our motto: "Variety is the spice of life."

Door Knobs, Onion Sets, Dog Collars and Shoe Polish.

Special sale of Straw Hats
Thursday.

PROFESSIONAL CARDS.

WILFRED GREENLEE

Attorney-at-Law

Bala, Kansas.

Clothes Cleaned and Pressed
while you wait.

L. R. JOHNSON
CLEANING ESTAB.

MLLE. MARIE MARTINE

Modiste Shoppe

Over Union State Bank.

MISS DELPHIA MUGLER

Exclusive line of silk garments.

Room, 292 Bonham Hotel.

Distinctive Hair Bobbing

AVIS ROBINETTE

Shampoo free.

ANNA A. MCKENNA

Private Tutor

Latin, Greek, English.

BERTHA MACKENDER

Chiropractress

Private Sanitarium, 122 Court St.

CLASSIFIED ADS.

For Sale:—A serving table, by a widow with four wooden legs. Call 4429 after 7 p. m.

Wanted:—Laundry to do, inquire Mrs. Flossy Frazier.

Wanted:—A car and lady chauffeur, with balloon tires and a good bumper. Write V. R., care of The Tiny Times.

Help Wanted:—A good cook. Inquire of R. James, one and one-half miles north of Clay Center.

Help Wanted:—An elderly woman who will stay with children late at nights. Call for B. Hemphill, at Green 1096.

Dressmaking:—Any size.—Miss Edna Robinette.

Landscape Gardening:—By experienced gardener. Dandelions a specialty. Prices reasonable. Call M. Peterson or H. Marsh.

Money to Loan:—On farms, oil wells, rabbit ranches and cemetery lots.—Davies & McConnell Investment Co., 6 East Fifth. Phone 12.

For Rent:—4 rooms, suitable for two spinsters or persons otherwise queer.—Bletscher Real Estate Co. 512 Court.

Wanted:—Dish-washer.—Hill's Cafe, 832 Lincoln.

Wanted:—Two passengers for a trip by aeroplane to Havana, May 9. Guarantee no fatal accident or money back. See Maynard Davis, Kiljoy's Hotel.

Lost:—Ford engine, between the Cook & Pressnall Art Shop and the Postoffice. Reward if returned to Goheen-Carson Music Studio, above Heimerich's Grocery.

ROYAL THEATER

Featuring

Mildred Hjelm in

"A WOMAN'S WOMAN"

Also

Betty Finley's Dancing Chorus.

Seniors Have All-Day Picnic.

Copied from Daily Distress
April 18, 1925.

On Friday morning, April 17, at 6:00 o'clock, the Senior class went on an all-day picnic to the picnic grounds near May Day, about 15 miles northeast of Clay Center. Sponsors Miss Bleakley and Miss McCune accompanied the class, Mr. Vergades being unable to attend because of illness.

The truck with the eats arrived at the grounds shortly after 8 o'clock. Two excellent cooks, Misses James and Morey, fried the bacon and eggs, while Miss Bleakley and Miss McCune made the coffee. The menu for breakfast was: coffee, bacon and eggs, buns, and oranges. After breakfast some went horse-back riding, some auto riding, some played base ball, some went fishing, and some went to sleep.

Misses Dorothy Cook and Treva Hjelm cooked dinner. The menu for dinner and supper was: Coffee, potato salad, baked beans, hamburgers, potato chips, pickles, cookies, and ice cream and cake. The chief event of the afternoon was a base ball game between the teams captained by Miss Bleakley and Miss McCune. Each side won a decided victory. Miss Bleakley feels very much at home on first base and Miss McCune handles the bat as if it was a rolling pin, while Mr. Frick showed marked ability on the mound. The results of the fishing parties were several bites and a fish about that long. Everybody, that is, almost everybody, wandered back into camp about 6:00 o'clock for supper. The anxiety of the whole class was much relieved when a couple of violet-pickers, who had either strayed, been lost, or were stolen, strolled back into camp. The couple, however, had no violets.

Discovers a Still

A fifty gallon still was found in operation in the north part of town by Revenue Officer, Vera James. This place has been watched for some time. Miss James will take the case before Justice of the Peace, Dorothy Stoddard, Saturday.

Bought Implement Co.

Mr. Thomas Doyle of the La-sita neighborhood has bought the A. Oberg Implement Company, and will take possession June first.

Seniors



Ken Allen



Girls we topped the chocolate



Donna, Mary, & Jane



Jeff Hounds



Frank, Bob, & Howard



Frank Clark



Edna H. Hinds



Frank Clark



Donna Hinds





Juniors



OFFICERS.

President,	- - - - -	John Hanna
Vice-President,	- - - - -	Francis Kramer
Secretary,	- - - - -	Lorena Linquist
Treasurer,	- - - - -	Ivan Hemphill
Sponsors,	- - - - -	Miss Hanna, Mr. Tolin, Mr. Guy

Committee Chairmen.

Junior-Senior Banquet

Menu—Leah Kriz

Program—Ruth Fletcher.

Decoration—Foster Rundle

Finance—Ivan Hemphill

Table—Ada Mae Moore

Invitation—Goldie Buckles

Pin—Orville Hughes.

The Juniors have succeeded in taking a prominent place in all school activities. Representatives of this class are to be found on all teams and are active in every organization. Their outstanding accomplishments of the year were the presentation of the Junior Play, "Young America," and the splendid Banquet given in honor of the Seniors.



Top Row—Parry, Maswarren, Smith, Pitts, Hanna, Sparks, Huffman, Woods, Absher, Moore, Ramsey, McKenna.
 Second Row—White, Randle, Parker, Tempero, Shields, Need, Oil, Shivers, Fox, Hedman, Dickman.
 Third Row—McMurry, Miffell, Todd, Stepp, F. Tomlinson, Swenson, H. Tomlinson, Werner, Stevenson, Thornton, Stewart, Moore.
 Fourth Row—Fanton, Malcois, Hemphill, Reble, Young, Pierce, Nenstiel, Mullen, Möttinger, Mayoe, Young, Achenbach.
 Fifth Row—Vincent, Osterhout, Swenson, Webb, Starr, Schoning, Tubbs, Tannhill, White, Tempero, Swanberg.



Top Row—Carpenter, Lloyd, Jenkins, Fletcher, Buckles, Hoffman, Knight, Brenner, Baker, Bonar, Hafner.
 Second Row—E. Carlson, Esslinger, A. Carlson, Bell, Luffin, Hooker, Caldwell, Hansen, Hemphill, Carnahan, Lund.
 Third Row—Hurdley, Dittmar, Griffiths, Johnston, Kraemer, Christensen, Lawson, Downing, Hillman, Baxter, Hare, McIntire.
 Fourth Row—Granel, Eitz, Anderson, Portland, Hayden, Emery, Dever, Joss, Crawford, Hildebrand, Larson, Babsentine, Fear.
 Fifth Row—Benson, Davis, Hemphill, Linquist, Delfs, Henry, Barker, Girardy, Goheen, Davis, Hughes, Hedman.

Juniors



Our Ed Hero



Our Girl



We and my boyfriend



S-U new cut



All Love



Up a Tree



Fix on the Women



Married



Shoutest that
Whack I
U Cold



When
of
Wings



After the
Advent



Oh!
Pope's
Crown



Quitting
million
\$1000



When the lake is dead



3
Q's
Q's



Wings



Red Dots



Added the

Roses are red,
violets blue
sugar sweet

Remember me to
English
Walter Wright



Sophomores

Benjamin Franklin
2900 2000 1000 1000 1000
27

Remember
old days
Cris IV in
in all the
specimens and
parties and
four the
thing



OFFICERS.

President,	-	-	-	-	-	-	-	-	-	Wavie Gilpin
Vice-President,	-	-	-	-	-	-	-	-	-	Lester Lohmeyer
Secretary,	-	-	-	-	-	-	-	-	-	Carl Richardson
Treasurer	-	-	-	-	-	-	-	-	-	Viola Spiers
Sponsors,	-	-	-	-	-	-	-	-	-	Miss Robinson, Miss Faulkner, Miss Hedgcock

The class of 1927 is distinguished by the outstanding records of its individual members. In Athletics and H-Y work they are especially active. Their ability was also shown by the fact that the Debate Teams were largely made up of Sophomores. Just before the holidays a Christmas Party held in the Gym was thoroughly enjoyed by the class.

Remember me to
Lophomore friends
Julia White.



Top Row—McNee, McConnell, Forsythe, Tempers, Hahn, Black, Ford, Auchard, Modan, Kirkendall, Barker.

Second Row—Kimbrough, Carlson, Molynieux, Oberg, Hoover, Rock, Ford, Hutchison, Barkyounk, Bryan, Gingles, Huie.

Third Row—Mall, M. Esslinger, Downs, Richardson, Lohmeyer, Alquist, Shaw, Coberly, Berglund, Hahn, Mott, McElrde.

Fourth Row—Dunn, Davis, Bruenger, Bumsted, Nennich, Cleverger, Brewer, Lehman, Gilpin, Johnmeyer, Henry, Grainger.

*please remember me as one of your friends for
I shall surely remember you. Remember
the class we had
to get the
class room*



Top Row—Bosenow, Neill, Wilson, Kay, McConnell, Norris, Ross, Tippin, Tempers.

Second Row—J. White, Swenson, Mitchell, Wickstrum, Rowland, Bosiska, Wylie, Todd.

Third Row—White, Tempers, Spiers, Mochde, Spilker, Kratochvil, Pugh, Slingsby, Stoffen.

Fourth Row—Swenson, E. Ross, Marshall, Walker, Rock, Oberg, RandaB. Smith.

Fifth Row—Smith, Watson, Mailen, Jones, Robinson, Ross.

*Remember me as a friend, don't forget the
days we have spent together in general
history. Edna Ross.*

Sophomores



Kid, watch!



FAT IN ACTION



no fair holding

Our Sponsors



I.C.U.



?who?



Our Shakes



A-BUTHIE
LASS



Some form



House in the
village days



Eddie
Smiles



u dont say



Hands, I win



Our Debaters



can u beat that



freshmen

Freshmen



Coming??

Whisper
and
sneaking



Heard
we
dint
mind



Waiting!!



My word!



Booies



Give me
your
day

1935-1936



1936-1937



1937-1938



1938-1939



On guard!



Orn-cooks



Whisper



Spook pig



A manny
believe



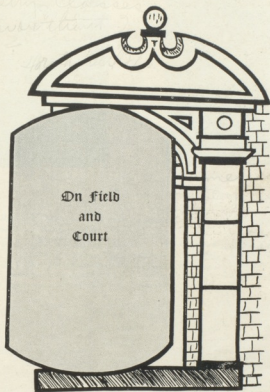
Ditched 'eh'

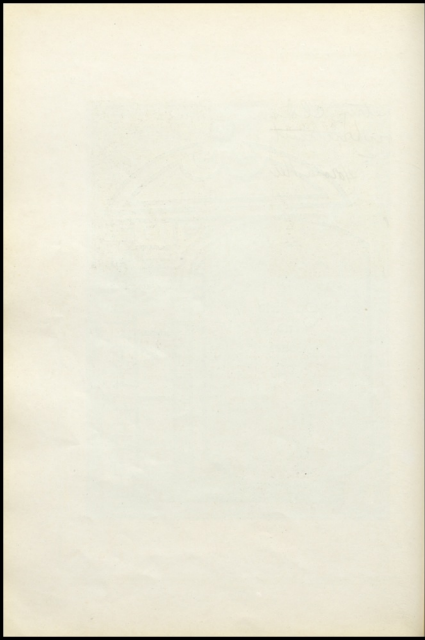


Looking Natural!



See well! go







E. H. TOLIN



V. R. VERGADES

Much of the credit for Clay Center's winning teams this year is due to the splendid coaching of Mr. Vergades and Mr. Tolin.

These Coaches have done much to keep the men in a good physical condition; which gave the fellows the "Old Fight." Thru working out clever plays, team work was developed which was so outstanding in the games as to call forth much favorable comment from other teams and coaches. C. C. C. H. S. is indeed fortunate in having two such capable coaches and natural leaders for her Athletic Department.



"Bill" Martin



"Wop" McIntire

Everybody up; Fifteen for the team!

Let's go! Wop and Billy have the crowd on their feet giving a wild demonstration.

A winning team must have the school behind them, and it's the cheer leaders' job to get them there. Martin and McIntire proved their ability to do it by the lusty support given to C. C. H. S. teams at every contest.

Morgan Keith, better known as "Rody" or "Soup," has fulfilled his part in helping the coaches and players by taking charge of all athletic equipment.



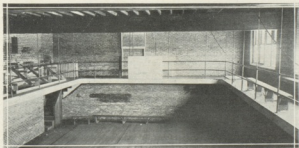
"Rody" Keith



The athletic teams are very fortunate to have as good gridiron and basket ball courts as they possess.

C. C. C. H. S. has a very good stadium and athletic field. Very few high schools of its size have a stadium. The stadium will seat over 1,800 people. The foot ball field is very good as it is level and has a full ten-yard zone. The money needed for its construction was subscribed by the Alumni.

The basket ball team has had the advantage of practicing on two courts. The school gym is smaller than the court in the City Auditorium, but is very good for teaching the minor parts of basket ball. The court in the City Auditorium gives the team the advantage of playing on a large court.



Foot Ball



Top Row—Vergades, Tolin, Frick, Keith.

Second Row—Snyder, Tempero, Bahr, Shaw, F. Tempero, Howe.

Third Row—Householder, Richardson, Brewer, Lohmeyer, Lelpersberger, Bazemman, Nemnich.

Fourth Row—Sheldon, C. Reed, Oberg, Lawson, Alquist, Helmerick, Tippin.

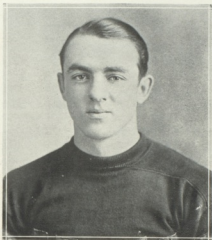
Fifth Row—Gilpin, Lehman, Ingamella, Stevenson, White, LeVeque, Johns.

Sixth Row—Ramsey, Henderson, H. Reid, A. Reid, Doyle, Manwarren, Frazier.

The 1924 foot ball season established an enviable record as six games were won and only one game lost; and that by just one point. In the first two games a player was used as a substitute who had attended another school last year and thru ignorance of the ten-week ruling, it became necessary to forfeit those two games.

The season opened with forty-five men reporting for practice. Ten of these were letter men. The squad developed into a wonderful fighting machine which was considered one of the best ever turned out by the school. Four of the team were mentioned in the lists submitted by coaches for the All State Players.

Much credit is due to the second team, for without them the first team would have been greatly handicapped.



ALPH REID

Captain of Foot Ball.

Captain Alph Reid proved to be a worthy leader of the foot ball team in 1924. This is his third year on the team, having played in the line for a year and a half, then he was shifted to the backfield at halfback, where he was feared by all opponents. It will be hard to find a man to fill his place.

FOOT BALL SCHEDULE

C. C. C. H. S.	63	Miltonvale	0
C. C. C. H. S.	36	Chapman	0
C. C. C. H. S.	82	St. John's	6
C. C. C. H. S.	6	Manhattan	7
C. C. C. H. S.	35	Belleville	7
C. C. C. H. S.	26	Washington	9
C. C. C. H. S.	7	Beloit	9
Total	225	Total	20



ALPH REED, Captain—"Alfonso"

Left Half
Height 5 feet 10 inches
Weight 170
C's 21, 23, 24.

HARVEY RAMSDEY—"Ram"

Right Half
Height, 5 feet 6 inches
Weight 147
C's 22, 23, 24.

RALPH REED—"Rachel"

Quarter Back
Height, 5 feet 9 inches
Weight 155
C's 22, 23, 24.

JOHN HEIMERICH—"Johnny"

Full Back
Height 5 feet 11 inches
Weight 184
C's 24.

LESTER MANWARTHEN—"Jumbo"

Left Tackle
Height 5 feet 9 inches
Weight 170
C's 22, 23, 24.

MARVIN STEVENSON—"Steve"

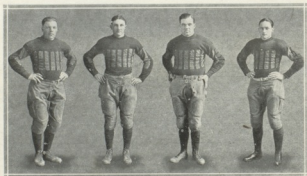
Right Tackle
Height 5 feet 10½ inches
Weight 245
C's 23, 24.

SAM HENDERSON—"Sam"

Right Guard
Height 5 feet 11 inches
Weight 172
C's 23, 24.

HARRY FRAZIER—"Pie"

Left End
Height 5 feet 11 inches
Weight 170
C's 21, 22, 23, 24.





THOMAS DOYLE—"Ted"

Center
Height 6 feet
Weight 171
C's 23, 24.

EDWARD LOHMAN—"Eddie"

Left Guard
Height 5 feet 11 inches
Weight 160
C's 24

WAVEE GILPIN—"Cider"

Center
Height 5 feet 11½ inches
Weight 161
C's 24.

RONALD INGAMELLS—"Heink"

Right End
Height 6 feet 1 inch
Weight 161
C's 22, 24.

LESTER LOHMEYER—"Lohmeyer"

Full Back
Height 5 feet 9 inches
Weight 152
C's 24.

CLAYTON LEVEQUE—"Frenchie"

Full Back
Height 5 feet 9 inches
Weight 150
C's 22, 24.

HAROLD GREENLEE—"Greenlee"

Right Tackle
Height 5 feet 11 inches
Weight 165
C's 24.

JOSEPH SHIELDON—"Oldshons"

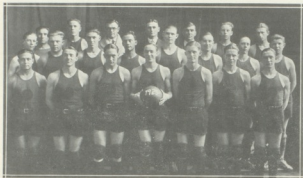
Guard
Height 6 feet
Weight 150
C's 24.

LEROY WHITE—"White"

Half Back
Height 5 feet 10½ inches
Weight 150
C's 24.



Basket Ball



First Row—Knepper, Clare, Vergades, Tolls, Prick, White, Parker.

Second Row—Kooter, Manwarren, Helmerich, Rohrdann, C. Reed, Keith, Householder, Snyder.

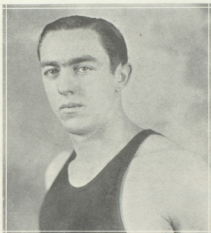
Third Row—Hamsey, A. Reid, Praxler, R. Reid, Krasner, Lehman, Lehmyer.

Five letter men reported for practice at the beginning of the basket ball season. With these five and several of last year's second team men, a real basket ball team was developed, which won nine games and lost but three. This team easily carried off first honors in the District Tournament held at Clay Center. They fought their way thru to first place at the Sectional Tournament at K. S. A. C., so were eligible to enter the State Meet at K. U., where they lost to Newton, the team placing second in the state.

The District Tournament at Clay Center March 13 and 14 was the first of its kind ever held here and was a decided success. The visiting teams were entertained in the homes of the Clay Center people.

Two Class A teams and ten Class B teams were entered in the boys' games, while six girls' teams were entered. Clay Center won in Class A. Leonardville won the Class B finals for the boys and for the girls.

Mr. Corsaut, basket ball coach from K. S. A. C., refereed the boys' games and Mr. Schadinger from Abilene refereed the girls' games.



RALPH REID

Captain of Basket Ball

Captain Ralph Reid headed the basket ball squad of 1925 very successfully. He played on the team for two years at guard and was always there to break up the opponents' teamwork. He always played a reliable game and will be greatly missed on the court next year.

BASKET BALL SCHEDULE

C. C. C. H. S.	11	Alumni	8
C. C. C. H. S.	64	Washington	14
C. C. C. H. S.	27	Beloit	7
C. C. C. H. S.	17	Emporia	29
C. C. C. H. S.	22	Concordia	23
C. C. C. H. S.	22	Manhattan	12
C. C. C. H. S.	19	Concordia	17
C. C. C. H. S.	26	Clyde	6
C. C. C. H. S.	28	Beloit	5
C. C. C. H. S.	25	Emporia	29
C. C. C. H. S.	29	Manhattan	15
C. C. C. H. S.	73	Clyde	25

TOURNAMENT

C. C. C. H. S.	46	Clyde	11
C. C. C. H. S.	16	Narka	7
C. C. C. H. S.	23	Manhattan	17
C. C. C. H. S.	29	Abilene	18
C. C. C. H. S.	15	Newton	27



RALPH REID, Captain—"Rachael"

Guard
Height 5 feet 9 inches
Weight 155
C's 24, 25.

HARVEY RAMSEY—"Ham"

Guard
Height 5 feet 6 inches
Weight 147
C's 24, 25.

HARRY PHLAZIER—"Fig"

Forward
Height 5 feet 11 inches
Weight 179
C's 23, 24, 25.

ALPH REID—"Alfonso"

Forward
Height 5 feet 10 inches
Weight 170
C's 23, 24, 25.

FRANCIS KRAMER—"Buz"

Center
Height 6 feet 1 inch
Weight 156
C's 24, 25.

EDWARD LOHMAN—"Eddie"

Guard and Center
Height 5 feet 11 inches
Weight 169
C's 25.

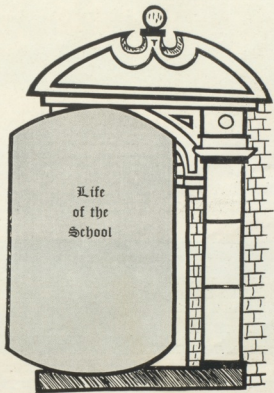
LESTER LOHMEYER—"Lohmeyer"

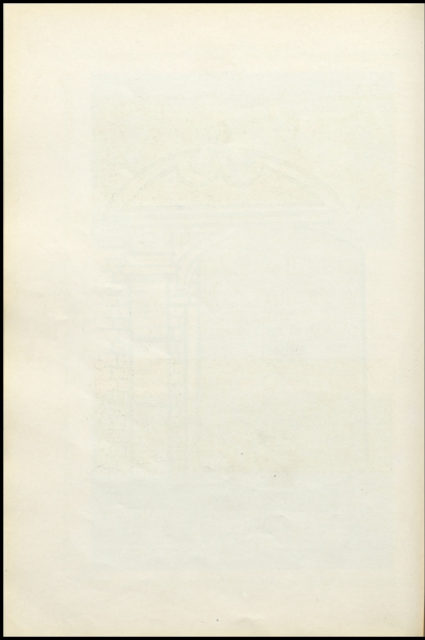
Forward
Height 5 feet 9 inches
Weight 162
C's 25.

JOHN HEIMERICH—"Johnny"

Forward and Guard
Height 5 feet 11 inches
Weight 184
C's 25.







Claxton Club



OFFICERS.

President,	-	-	-	-	-	-	-	Dorothy Cook
Vice-President,	-	-	-	-	-	-	-	Lorena Linquist
Secretary,	-	-	-	-	-	-	-	Elpha Pantom
Treasurer,	-	-	-	-	-	-	-	Warren Walquist

The Claxton Club is composed of Junior and Senior students in Normal Training.

Classes in this Department are under Mrs. Corder's charge. Here they are prepared for State Examinations held annually for those desiring a certificate to teach.

The Club is also sponsored by Mrs. Corder and at the meetings, which are held twice monthly, the members discuss the problems of the rural school teacher. In addition to these discussions, the aim of the club is to teach the members self-confidence when appearing before an audience. At Christmas time the club entertained the city grade students with a play.



First Row—Presnall, Hallanka, McWilliams, Ramsey, L. Smith, Molsinger, Knight, Lloyd, Reble, M. Pantom, Baker, Malcolm.

Second Row—Mullen, Marsh, McConnell, Carpenter, Manwarren, McMurphy, A. Moore, Buckles, Mayos, Woods, Fletcher, Clark.

Third Row—Hill, Wiberg, Marsh, Peterson, Robinsonette, Miedfelt, Wood, Z. Davis, Linquist, T. Hjelm, B. Davis, Jones.

Fourth Row—D. Stoddard, Hurdle, White, Stewart, R. Esslinger, Ludwig, Walquist, Ladins, Lund, Cook, Marshall, Parker, Corder.

Fifth Row—Todd, Delfs, Martin, E. M. Carlson, Granzell, Hanson, Lawson, Scheidskoenig, A. Carlson, Caldwell, Stevenson, E. Pantom, Dickman, M. Davis, Achenbach.

Boys' Booster Club



First Row—Lenhart, Lenhart, Shivers, Walquist, Hildebrand, Anderson, Richardson, Hemphill, Page, Hughes.

Second Row—Keith, McIntire, Pierce, Swenson, Alquist, James, Rohrdanz, Osterhout, Keener, Nenstiel.

Third Row—Hilman, Youse, Heimerich, Downing, Kramer, Vincent, Martin, Funnell, Whitsett, White.

The Boys' Booster Club is in its third year of pep production and has been right on the job at all athletic and other school contests during the year. In giving school yells and pepping up the occasion they are unsurpassed. Much credit is due them for entertaining the crowds with clever stunts between the halves of foot ball and basket ball games.

OFFICERS.

President,	- - - - -	Francis Kramer
Secretary and Treasurer,	- - - - -	Carl Richardson

Girls' Booster Club



First Row—Stepp, Hahn, Werner, Dudley, Booker, Kappleman, Borglund, Ertz, Borland, Deffa, E. Moore.

Second Row—Mullen, Logback, Goheen, Glidden, A. Pugh, Linsquist, F. Larson, Hoffmann, Baker, McKenna.

Third Row—Dushan, Moore, Goheen, McMurry, Carson, Carlsen, G. Larson, Ahlberg, Mott, Becker, Young.

Fourth Row—H. Pugh, Hafner, Wood, Pary, Morey, Senn, Gray, Romar, Girard.

The Booster Girls is a pep organization to which most of the girls are eligible. The club loyally supports every school activity and to them goes the credit for putting across so successfully the many ticket selling drives. By these and other activities the girls help develop a genuine school spirit within the student body.

OFFICERS.

President,	- - - - -	Florence Dudley
Vice-President,	- - - - -	Nell Senn
Secretary and Treasurer,	- - - - -	Clarice Girard

Hi-Y Club



First Row—Hillman, Rohrdanz, Gilpin, Frazier, Funnell, Hanna, Hemphill.

Second Row—Prick, James, Martin, Heimerich, Lohman, Kratochvil, Vergades.

The Hi-Y is a Christian organization sponsored by Mr. Vergades. The club holds weekly meetings for the benefit of every boy in school. At these meetings the boys hear talks from the local ministers, business and professional men. In addition to this, the cabinet members meet with Mr. Steininger once a week for Bible Study. Weekly inner circle groups are also held by the same boys.

An all school mixer was held at the beginning of the year in which the Hi-Y and Girl Reserve joined in welcoming the Freshmen. By social activities during the year the Hi-Y helps to create a spirit of Christian fellowship among the boys.

OFFICERS.

President,	- - - - -	John Heimerich
Vice-President,	- - - - -	Edward Lohman
Secretary,	- - - - -	Billy Martin
Treasurer,	- - - - -	Raymond James

CABINET MEMBERS.

Program,	- - - - -	Bryce Funnell
Bible Study,	- - - - -	Rogers Kratochvil
Social,	- - - - -	Raymond Rohrdanz
Membership,	- - - - -	Ivan Hemphill
Publicity,	- - - - -	Leo Hillman
Finance,	- - - - -	Harry Frazier
World Outlook,	- - - - -	Wavie Gilpin
Service,	- - - - -	John Hanna

Girl Reserve Club



First Row—Need, McCune, Werner, Scheinkoenig, Larson, James, Molyneaux.

Second Row—Knight, Linquist, Morey, Dunham, McKenna.

The Girl Reserve is an organization sponsored by Miss McCune, which is active in Christian work around the school and community. Weekly programs consisting of discussions are attended by all girls of the school. Alternating each week a Cabinet Training Group and Bible Study Class is conducted by the Cabinet members.

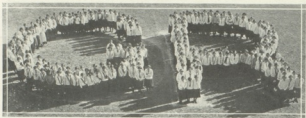
OFFICERS.

President,	- - - - -	Beatrice Morey
Vice-President,	- - - - -	Marie Werner
Secretary,	- - - - -	Grace Larson
Treasurer,	- - - - -	Rachel Dunham

CABINET MEMBERS.

Membership,	- - -	Marie Werner
Program,	- - -	Lorena Linquist
Service,	- - -	Josephine Scheinkoenig
Finance,	- - - -	Vera James
Social,	- - -	Mary Albee McKenna
Publicity,	- - - -	Stella Knight
Big Sister,	- - - -	Marcia Need
Music,	- - -	Esther Molyneaux

Girl Reserve Club



Among the many accomplishments of the Girl Reserve for the year are the White Gifts for the Good Fellows at Christmas time, a Mothers' and Daughters' Tea, the supporting of a missionary in China, the furnishing of a child's room in the Clay Center Hospital, and the making of scrap books for Mercy Hospital at Kansas City. Fifteen girls represented the organization at the winter conference held at Concordia. In April the Hi-Y and Girl Reserve staged a Carnival as an entertainment for all the school.

Vocational Agriculture Society



First Row—Rundie, Black, H. Rosiska, R. Rosiska, Thornton, Long, Young.
 Second Row—Black, Johnston, Henderson, Leipersberger, Dittmar, Baxter, James, Guy.
 Third Row—Thornton, Hundley, Tippin, Murphy, Russell, Glace, Ross, McNay.

The Ag Society is a club composed of members of the Vocational Agriculture Department. The main purpose of the club is to stimulate interest in vocational work. In the meetings which are held twice monthly, programs consisting of debates, talks, stunts, etc., are put on by the members. The Society has its social side also, and during the year several parties and picnics are enjoyed by the members and their friends.

OFFICERS.

President,	-	-	-	-	-	-	-	Philip Young
Vice-President,	-	-	-	-	-	-	-	Elmer Thornton
Secretary,	-	-	-	-	-	-	-	Hartzell Long
Treasurer,	-	-	-	-	-	-	-	Neuman Johnston

Departments

BIBLE.

Bible students are under the instruction of Mrs. Siewert, who gives her class a course which completely covers every book in the Old Testament of the Bible.

COMMERCIAL.

The Commercial Department offers training along the various lines of business. Mrs. Hemphill, head of the department, is instructor in Bookkeeping, Shorthand, and one semester each of Business English, Commercial Law and Commercial Geography. Two classes of Penmanship are under the direction of Mr. Oppy and Mrs. Corder. Six classes in Typewriting, two of which take advanced work, are also under Mr. Oppy's supervision. Miss Bleakley teaches the two classes in Commercial Arithmetic. The Commercial Department makes up a large part of the school and annually graduates many students who are prepared for business positions.

ENGLISH.

The English Department, in its four year course, has but two general purposes. In the composition course an attempt is made to teach the students to express their written and spoken ideas in correct effective sentences.

Through the study of literature, the students are expected to develop an appreciation of good literature in order that they will read the works of good authors and appreciate the value of reading as a mode of entertainment. Advanced English classes are under the supervision of Miss Akins, with Misses Kretzmeier and Robinson teaching first and second year English.

HISTORY.

American History is taught by Miss Bleakley. It is a subject required of every Senior and consists of a thorough course of facts and events relating to our American Nation, together with a study of Current History.

European History, under the instruction of Miss O'Meara, is a second year subject and the Sophomores are learning the narration of facts and events arranged chronologically with their cause. Advanced Civics is also taught by Miss O'Meara.

LANGUAGE.

The Foreign Language Department is vested in the teaching of three languages. Miss Flynn has one class in Spanish I and one class in French III. Miss Carter is the Latin Instructor. She has two classes in Elementary Latin, one in Caesar, one in Cicero and a small class of advanced students studying Virgil.

MATHEMATICS

Mathematic students are fortunate in securing thorough instruction. Miss Hanna is the Algebra teacher, while Miss Steininger helps the Sophomores to understand the mysteries of Geometry. In addition to first year Algebra, Miss Hanna is instructor in third year mathematics, namely Algebra III and Solid Geometry.

SCIENCE.

Mr. Vergades has charge of the branches of Physical Sciences. Two classes in Physics, one in Chemistry and one in General Science are under his instruction. Miss McCune is at the head of the Biological Science Department, and conducts three classes in Biology and two classes in Normal Training Agriculture. Three well equipped laboratories help to make these courses practical.

Vocational Agriculture



The Vocational Agriculture Department, under the supervision of Mr. Guy, is in two divisions. The Freshman Class, conducted in the afternoon, studies Animal Husbandry and takes Stock Judging along with the course. The morning section takes advanced work in crops, dairying and poultry raising. Two days a week are spent in the shop by each section. The Vocational Department has a well equipped shop for all branches of Farm Shop Work, where the students can receive practical training.



Home Economics



Hedges, Spiers, Benson, Molyneux, Pear, Grimison, Modan, McCulloch,
Pugh, Tempero, Steffen, Neill.

The Domestic Science Department, under the instruction of Miss Hedges, is an important part of the school. Three classes in Domestic Science I have an interesting course in cooking which includes several field trips. Two classes in Domestic Art II study a course in sewing, while the small class of advanced students take dress making.

In addition to these there is a cafeteria class requiring two hours a day. Second semester cafeteria management is left entirely to the students, who serve an average of fifty plates a day.

Promoter Staff



Top Row—Manwarren, Hillman, Scheinkoenig, Johnston, Kappelman, Keener, Schwab.

Second Row—Danham, Manwarren, Page, Hedman, Motsinger, Hemphill, Ramsey.

Third Row—Akina, McMurry, Joss, LeVoque, James, Dotts, Larson.

One branch of the English Department of which the school is rightly proud, is the newswriting class, supervised by Miss Akina. Each student is trained in the different branches necessary in the publication of a newspaper, except that of actually printing it. This class publishes "The Promoter," a four-page paper issued twice a month.

Manual Training



The Manual Training Department consists of three classes in wood work and mechanical drawing under the instruction of Mr. Telin. Two classes spend twelve weeks at Mechanical Drawing and the remaining time is used to learn the fundamentals of wood work and the making of useful articles. The advanced class studies furniture designing and some wood-turning. Their knowledge is put into practical use by constructing many fine articles of furniture which are a credit to the Department.

Music



The Music Department offers a large field to the High School students. Mr. Steininger is the instructor of violin and other instruments and gives his students practical work in Band and Orchestra at the same time. Miss Faulkner teaches voice and piano. The ability of these students is shown in the operetta and various glee club entertainments.

Boys' Glee Club



Top Row—Johnson, Gilpin, Doyle, A. Oberg, Vincent, Henderson, Mattingly, Whitall.

Second Row—White, Dittmar, Youse, McCully, Downing, Martin, Tannehill, Funtell, Faulkner.

Third Row—Marshall, Nenstiel, Householder, Lohmeyer, Aqvist, Ramsey, D. Swenson, Richardson, Anderson.

Fourth Row—Rundie, Knepper, Hemphill, Shivers, C. Oberg, Hughes, Swanberg.

The Boys' Glee Club was organized with the other classes in the fall enrollment. The club meets twice a week regularly for instruction and practice. Many good voices have been developed in the year's course and in February the boys' and girls' glee clubs, both of which are under the direction of Miss Faulkner, staged an operetta, "The Gypsy Rover," which proved a great success.

Girls' Glee Club



Top Row—Oppenlander, Mall, Grainger, Gay, Finley, E. Smith, Dudley, Carson, Carlson, Stewart, Rebbe.

Second Row—Pugh, A. Moore, P. Larson, Fox, Olsen, V. Todd, I. Todd, Vasey, Hughes, Booker, Kimbrough, Motzinger.

Third Row—Hjelm, Bansted, Kellogg, Bomar, Girard, Paulkner, Bryan, Gray, Mott, Esslinger.

Fourth Row—White, Mullen, Forsythe, Knight, Barker, Turner, Morgan.

The Girls' Glee Club is made up of the girls who are students in voice. The club, which is under the direction of Miss Paulkner, meets for practice three days a week. The girls make several public appearances during the year, and in February, with the help of the Boys' Glee Club, successfully staged the operetta, "The Gypsy Rover."

Band



The C. C. C. H. S. Band of forty-four pieces, under the direction of Mr. Steininger, is an organization of which the school is very proud. In addition to pepping up foot ball and basket ball games, the band furnishes entertainment for chapel programs. The public concert given in the spring is the crowning event of the year's work.

Clarinet—

John Anderson
Cy Emery
John Hanna
Ben Hemphill
Clifford Mailen
Howard Osterhout

Drums—

Ronald Downing
Dean Knepper
Glenn Moehle

Piccolo—

Frank Tomlinson

Cornet—

William Brown
Donald Dever
Bryce Funnell
Letha Goheen
Wavie Gilpin
Orville Hughes
Milo Hahn
Louis Hay
Harry Mitchell
Foster Rundle
Iris Smith
Joyce Wilson

Bassoon—

Raymond Alquist

Saxophone—

Harry Bumsted
Fred Downing
Edith Fear
John Heimerich
Lefroy White
Rama Youse

Baryton—

Waldo Nenstiel
Wilbur McIntire

Oboe—

Billy Martin

Trombone—

Frances Booker
Frank Meek
Lee Rock
Harry Tagnehill
Lloyd Whitsett
Carl Richardson

Alto Horn—

John Clevenger
Donald Kay
Lester Moehle

Tuba—

Harvey Ramsey
Marion Vincent

Orchestra



The High School Orchestra is composed of thirty-two pieces and is under the direction of Mr. Steininger. The members display considerable ability in presenting classical and modern compositions. The Orchestra plays for the various high school activities, such as the class plays and chapel programs. It is the custom to give one public concert during the year.

Violins—

Enid Smith, Concert Master
Margaret Borland
Edna Grainger
Clifford Howe
Arthur Mellgren
Glenn Moehle
Verr Page
Ralph Parker
Lyndon Rundle
Lawrence Servais
Rosallid Swenson
Floyd Tempero
Howard Tempero
Lavone Goheen

Bass—

Floyd Walker

Cornet—

Bryce Funnell
Foster Rundle

Flute—

Frank Tosalinson
Bernice Davis

Drums—

Fred Downing

Bassoon—

Raymond Alquist

Piano—

Ione Gray
Clara Rosenow

Cello—

Marion Vincent

Bass Viol—

Floyd Walker

Clarinet—

Ben Hemphill
Howard Osterhout

Horn—

Donald Kay

Oboe—

Billy Martin

Trombone—

Lloyd Whitsitt

Saxophone—

LeRoy White
Rama Youse

Debate



Top Row—Rundie, Guy, Griffiths, Auchard, Richardson.

Second Row—Smith, Robinson, Huls.

The 1924-25 question for debate was: Resolved, that the United States should cancel all financial obligations due from governments of the Allies on account of the World War. The affirmative was upheld for C. C. H. S. by Carl Richardson, Winnie Smith and Foster Rundie. This team was coached by Miss Robinson. The negative team was coached by Mr. Guy and was composed of Everett Griffiths, Nellie Huls and Victor Auchard. Although failing to achieve district honors, the teams succeeded in winning decisions over several contesting schools.

Dramatics



"CHARM SCHOOL" CAST.

Top Row—Crawford, Youse, Smith, Martin, Carson.

Second Row—Ridenour, Gilbert, Schwab, Dunham, Fletcher, Akins.

Third Row—Borland, Nenstiel, Dells, Hughes, Moore.

Dramatics play an important part in the activities of the school. The All School Play cast was coached by Miss Akins and successfully staged "The Charm School." The Junior Play, "Young America," and the Senior Play casts were coached by Miss Olive Kackley of Chicago and given with equal success. Besides the three class plays, numerous small plays, farces and pantomimes are given by the students for various entertainments throughout the year.

Annual Staff



Top Row—Rohrdanz, Scheinkoenig, Heimerich, Martin, Funnell, Dudley, Hillman.

Second Row—Bleakley, B. Hemphill, Morey, I. Hemphill, Fletcher.

The Staff of the 1925 Orange and Black wishes to utilize its last opportunity to express a deep felt appreciation to those who have contributed to the success of this, our Senior Memorial. In arranging these pages we have endeavored to recall for the reader fond memories of the days spent in C. C. C. H. S. May the Juniors and underclassmen who will be Seniors in the days to come, do the same, and forever keep alive the traditions of the school we have learned to love.

THE OFFICIAL STAFF.

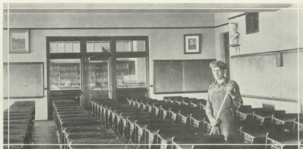
Editor-in-Chief,	- - - - -	Beatrice Morey
Associate Editor,	- - - - -	Ben Hemphill
Business Manager,	- - - - -	Bryce Funnell
Assistant,	- - - - -	Billy Martin
Senior Editor,	- - - - -	Josephine Scheinkoenig
Athletics,	- - - - -	John Heimerich
Organizations,	- - - - -	Raymond Rohrdanz
Snap Shot Editor,	- - - - -	Florence Dudley
Art Editor,	- - - - -	Leo Hillman
Junior Representatives	- -	Ruth Fletcher, Ivan Hemphill
Faculty Advisor,	- - - - -	Georgina Bleakley

Stock Judging Team

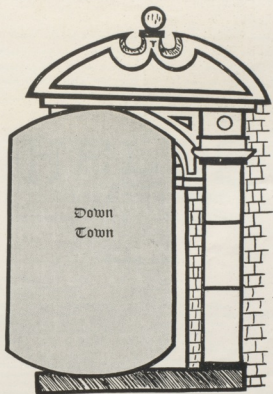


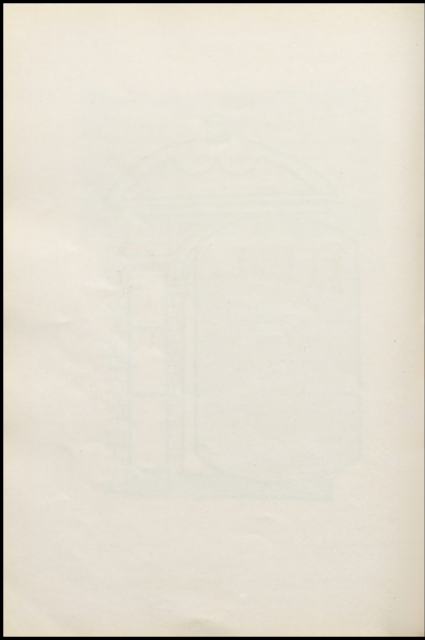
First Row—Osenbaugh, Young. Second Row—Guy, Dittmar, Rosiska.

The students of Vocational Agriculture center much of their interest on the Stock Judging Team. Every student is eligible and after considerable practice judging, the team was picked and coached by Mr. Guy. Those chosen were Young, Dittmar and Rosiska, with Osenbaugh as alternate. This team went to Manhattan and carried off First Place Honors at the district contest held there.



The Annual Staff feels that the 1925 Year Book would not be complete without including a picture of one of the school's best friends—Mr. Webb, the Janitor. Perhaps this picture of the Library and Study Hall will serve to keep alive memories of many and varied experiences in these two rooms.





Quality Goods

Correctly Priced

When your wants turn to any of the following lines, we will be pleased to serve you with Drugs, Books, Wall Paper, Paints, Varnishes, School Supplies, Garden Seeds, Field's Seeds, Brushes, Kodaks, Cut Glass, Candies, Bibles, Brief Cases, Fountain Pens, Eversharp Pencils, Perfumes, Stationery, etc.

HELDS

CENTRAL
BOOK & DRUG STORE.

Clay Center's oldest and best drug store for over twenty years.

FACTORY AGENTS

Parke Davis & Co's. Pharmaceuticals
H. K. Mulford Bacterins
Wear-Ever Rubber Goods
Bradley & Vrooman House Paints
Berry Bros.' Varnishes
Bradley & Vrooman Flat Wall Finish
Johnson & Johnson's Surgical Supplies
Kodaks
Brownies
Spalding's Sporting Goods
Nyl's Family Remedies
Bagster's Bibles
Empire Cut Glass
Gibson Art Goods
Eye Glasses

Ivory Goods
All Kinds of Toilet Articles
Fine Stationery
Lee's Chicken Remedies
Clay County School Book Depository
Remington Typewriter
Corona Typewriter
Eversharp Pencils
Waterman Fountain Pens
Conklin Pens
Thermos Goods
Dennison's Waxed Paper
Blank Books
All kinds of Field and Garden Seeds
Star Peerless Wall Paper

A Good Selection

The Best of Service

Good Clothes Win Admiration and Respect

CLOTHCRAFT
Clothing

Whether you're "playing" for the admiration of one girl—or for the respect of the whole wide world—good clothes help mightily. And CLOTHCRAFT Tailored Clothes are good.

Hart Schaffner & Marx and Clothcraft Tailored Clothes \$25 to \$50

A Great Value!

Special attention and special values for students.

New models, wider shoulders, looser coats, wider trousers.

English, you know!

Beautiful colorings; the very latest in fabrics.

Johnny Tupant Suits

Best make, best material, guaranteed wearing qualities.

\$10.00 to \$19.00.

Kaynee Tub Suits

\$1.95 to \$3.00.

Emery Shirts

Collar attached

Collar separate

Neck Band

Fast color

Your sleeve length.

\$1.50 to 5.00.

W. L. Douglas and

Edmunds Shoes,

Oxfords and

High Shoes.

New colors, models

\$5.00 to \$7.50.

Stetson Hats

Air Cool Caps

Holeproof Hose

Ladies' and Gents.

GREAT WESTERN CLOTHING COMPANY.

CLAY CENTER

CONCORDIA

ABILENE

S. M. VINCENT
THE STOVE MAN

W. J. VINCENT
THE GUN MAN

VINCENT

423 - 425

Co-op. 69

H
A
R
D
W
A
R
E

A
N
D

BROTHERS

Lincoln Avenue

United 69

A. E. VINCENT
THE HARNESS MAN

W. S. VINCENT
THE Incubator MAN

H
A
R
N
E
S
S



Variety

Tastes differ; if it weren't for this fact a merchant's job would be easy—and about as interesting—as selling postage stamps.

As it is, we always have the greatest possible variety here, each department constantly receiving new merchandise that expresses the latest vogue. Visit our departments.

Dry Goods

Men's Furnishings

Apparel Shop

Shoe Section

Groceries

A Word of Appreciation

We wish to thank the members of the class of 1925 for the generous patronage during their four years of High School work in Clay Center.

SWENSON BROTHERS



PRESBYTERIAN



METHODIST



SWEDISH METHODIST



BAPTIST



CATHOLIC



GERMAN LUTHERAN



**The
Guest Dry Goods
Company**

Correct Apparel for
Women, Misses and
Children.

**For The
Spring Costumes**

We have delightful
displays that will in-
terest you.

Attractive Top Coats

**The Practical
Ensemble Suit**

and the
ONE PIECE DRESS

The new styles in
FOOT WEAR
are very pleasing
this season.



What Do You Think of This Idea?

Most of our college trade want a really fine suit. None of it wants to pay any more than is represented by solid value. We figured that the thing to do was to concentrate. Get together a wonderful assortment of suits absolutely right in every particular, bought close, marked close, not too high priced. That's what we have done for spring. Forty to fifty dollars is the price. You get an awful lot for that, in these Society Brand college clothes.

Mallory Hats

-o-

Tobias Caps

Arrow Shirts

Cheney Bros. Neckwear

Walk-Over Shoes

Phoenix Hose

The Boston Clothing House

J. A. Frishman, Prop.

The First National Bank

--extends hearty congratulations to the Class of 1925 and extends to them a cordial invitation to make the Oldest Bank in Clay County their banking home.

Here Since 1884.

SODA FOUNTAIN

LUNCHES

We thank you for past favors and hope to serve you better in the future.

Candy Kitchen Cafe

Home Made Ice Cream, Ices and Candy

We give you credit for having good cents.

TRY THIS—

Write down all the men in town you know of who do not bank their money.

Now write down a corresponding list of those who do.

Which class

would you

rather be in?

It doesn't take a whole lot of figuring to decide the question, does it?

THE FARMERS STATE BANK

Clay Center, Kans.

"There Is No Substitute For Safety"

GET THE HABIT

—trading at the New Clothing Store. Always showing the latest for Men and Boys. We feature Fashion Park and Griffon Clothes.

WILSON BROS. FURNISHINGS

Gentry -Byrne Clothing Co.

Clay Center, Kans.

Pocket Watches

Wrist Watches

Diamonds

Jewelry - Cut Glass - Silverware

China

Leather Goods

Pens and Novelties

A. Buchmann, Jr.

Jeweler & Optometrist

The Gift Store

Clay Center, Kans.

"The Bon Marche"

The House of Quality and Service

We are new to most of you—yet we are old at the game. Thirty-eight years is our record of merchandising.

Whenever you need—

High Class Ready-to-Wear, Silks, Drapery, Woolens or any item in Dry Goods, see us; we know we can please you.

Three Good Rules



A young man who was determined to build up a snug little fortune decided to learn how others had solved the same problems that confronted him.

He found three things were necessary.

First—Of course he must learn to earn money, and the more he could earn the easier his success would be.

Second—He found that it was very important to learn to spend his money properly. It is very easy to "blow in" all a man earns.

Third—He found it was no trick to save money if the first and second rules were observed. Any one who knows how to earn money and spend wisely will find a snug bank account easily obtained.

Try these rules for yourself.

UNION STATE BANK

TO OUR C. C. H. S. FRIENDS

For a Quarter Century your Fathers and Mothers have settled the food question by selecting PICKWICK FOOD PRODUCTS. It, too, will be easy for you to settle this question in the future by selecting PICKWICK FOOD PRODUCTS AT YOUR GROCERS.

Kansas City Wholesale Grocery Company

DISTRIBUTORS

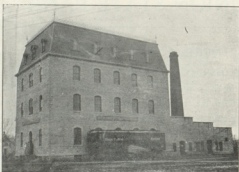
LEO W. MOREY, Salesman.

Lucier BROS.

Cleaners

Tailors

Clay Center, Kansas.



The Snell Mill and Grain Co.

CLAY CENTER, KANSAS.

Diamonds

Watches

Edward E. Bennett

JEWELER and OPTOMETRIST

Cut Glass

Pearls

China

Ivory

Silverware

Amber and Shell Goods

Leather Goods

Fountain Pens

Everything New in Jewelry

Always Something New in Gifts

"Where Quality Tells
And Price Sells"

Pianos

Edison Phonographs

Clay Center, Kansas.

Our Obligations to You and to Others

The saying, "goods well bought are half sold," tells only a part of this Store's story.

Our obligation to our customers does not end with the actual purchase and sale of goods.

Every purchase you make from us must be the best from the standpoint of quality and price. Large volume buying for our hundreds of Stores assures greater values than are ordinarily to be had.

Each sale in this Store must carry with it absolute satisfaction to the customer. Our responsibility does not end until you are finally pleased.

J. C. Penney Co.

Your Satisfaction Is What Counts!

Many a customer has established a connection with this bank through opening a small savings account. That was the starting point.

They remained to transact all their banking business with us because they were satisfied that in every transaction, large or small, the same spirit of willing helpfulness and sincere personal interest prevailed.

We ask the opportunity to serve you in the manner you wish to be served. The end we seek is your complete satisfaction.

The Peoples National Bank

Clay Center, Kansas.

F. B. Fullington, Pres't. J. G. Cowell, Vice Pres't.
Wm. Docking, Vice Pres't. J. H. Kerby, Cashier.
W. S. Ross, Ass't Cashier

Bread Is the Best and Cheapest Food



A uniformly elegant flour,
guaranteed to please
particular people.

MANUFACTURED BY

The
Williamson Milling
Company

CLAY CENTER, KANSAS.



FOR SALE BY GOOD GROCERS EVERYWHERE.

Service



. Service

"What's in a Name"

Shields Suitatorium not only in name, but first class work and service which has been back of it, has meant our success. We want your business be it large or small. All our work guaranteed. We, ourselves, the better serve by serving others best. Take it to Shields, or call 199. We call for and deliver.

Shields Suitatorium

Garment and Rug Cleaners
North side Lincoln Ave.

The Prentice Electric Shop

Where you can buy "Everything Electrical" in the line of gifts.

Phone United 452.

Auto Inn

GASOLINE OILS TIRES TUBES ACCESSORIES
STORAGE

State Distributors of Para-Bell Tires

E. LEWIS, . . . Proprietor.



C.C.C.H.S.



RED REPUBLICAN RIVER DAM



BRIDGE HUNTRESS PARK



CITY AUDITORIUM



COUNTRY CLUB



CITY PARK BAND STAND

OUTINGS, PICNICS and PARTIES

--are not complete without good things to eat. When you plan your hikes and parties, let us help you get the eats. You will be pleased with them, we know.

Cookies, Pickles, Fresh Fruits and so many other goodies.

The
Red Arrow
Store

Dietrich Grocery

The
Red Arrow
Store

CHEVROLET

NASH

AUTOMOBILES

Schrader Auto Co.

Clay Center, Kans.

SALES

SERVICE

Hummer Supply Company

Grocers Who Sell For Less

See us for

Fresh Fruits and Vegetables

Pickwick Canned Goods

Better Merchandise

Better Prices

Better Service

Poultry Supplies

Oyster Shell

Powdered Buttermilk

Chick Feeds

Corn Chop

Bran, Shorts

Highest Cash Prices paid for Poultry, Cream and Eggs

C. P. Portrum & Company

610 Fifth Street

BASE BALL GOODS

ANSCO CAMERAS AND FILMS

Priest Drug Company

LOWNEY'S CANDIES

WHITMAN'S CHOCOLATES

STATIONERY

Remember

--That we are Headquarters for high class Fresh Fruits and Vegetables for those Picnics this Summer.

Help Yourself Grocery Company

REX THEATER

Clay Center, Kansas.

One of the Best Theaters in the State of Kansas

Built by and for the people of Clay County. The Home of Clay County Community High School Class Plays. Make it yours for the best in Motion Pictures.

We Appreciate Your Patronage.

MR. and MRS. FLOYD SCHULTZ, Proprietors.

Congratulations, Seniors.

Remember the modern laundry is a public servant and has a service that will please you.

CLAY CENTER

Laundry and Dry Cleaning Works



COURT HOUSE



POST OFFICE



REX THEATRE



LIBRARY



GARFIELD SCHOOL



McKINLEY SCHOOL

KIRKPATRICK & CONRAD

Quality Meats

Service is Our Motto

Try Us.

608 Fifth St.

Both Phones 189

RAY RANKIN

The Rexall Store

Liggett's and Johnston's Chocolates

Soda Fountain

THE STORE OF QUALITY AND SERVICE

Trade Here and Get Red Arrow Money

OVERLAND

WILLYS-KNIGHT

HUPMOBILE

FARM MACHINERY

Marshall Implement and Garage Co.

TRACTORS and THRESHERS

REO SPEED WAGON

Her Graduation

Her Debut

Her Wedding

The three important events in the life of every girl!

And each an occasion that calls for a visit to her chosen Photographer.

We have been privileged to be the chosen photographer of many hundreds of Graduates, Debutantes and Brides. Probably there is a good reason.

BRINER STUDIO

430½ Lincoln Ave.

Phone United 294

Service

Service

Service

SCOTT'S BAKERY

Where you get the good things to eat.

We have good old fashioned Home Cooking

Try our HOME MADE Bread, Cakes, Pies and Rolls

Service

Service

Service

TRADE AT

Barker & Funk's Drug Store

DRS. HESS & CLARK LINE

Court Street

Telephone 35

SCHOOL NEEDS

Supplies
Dental Cream
Tooth Brushes
Barrettes

Candy
Gum
Combs
Purses

Students meet their friends at our store.

DUCKWALL BROTHERS

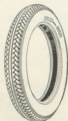
Rex Barber Shop

THE SHOP OF SERVICE

We Strive to Please. Give Us a Trial.

North side of Square

"Rube" Miller, Prop.



The way to get Kelly-Springfield mileage is to
buy Kelly-Springfield Tires.

MOYER TIRE REPAIR

Always Open

MILLER COMPANY

Authorized Factory Distributor--

WILLARD BATTERIES HARRISON RADIATORS
NEUTRODYNE RADIOS EISEMANN MAGNETOS

Starting and Ignition equipment as used on all prominent makes of
automobiles.

Both Phones 59.

"On the Corner."

HOME MADE CANDY

ICE CREAM

SODA

FANCY PACKAGES

CIGARS

SWEET SHOP

FRANK KATRADES, Prop.

PHONE 660

MILLINERY

GIFTS

STARR SHOPPE

Clay Center, Kans.

GORDON HOSIERY

DRESSES



THE
FARMERS' STATE
BANK

THE
FIRST NATIONAL
BANK



THE
UNION STATE
BANK

THE
PEOPLES' NATIONAL
BANK



Obenland Plumbing Co.

PLUMBING AND TINNING

Hot Water, Steam and Air Heating.

Green Colonial Furnaces.

Century Furnaces.

Clay Center

Kansas.

"The Red Arrow Store"

Kansas Lumber & Coal Co.

P. H. Sanneman, Manager

An attractive home is as good security as gold.

Congratulations to the

Class

of

1925

Sanneman Bros. Construction Co.

Contractors and Builders.

Home of Invader and Jay Hawk Canned Goods.

Hemphill & Hofmann

Our Motto:

Quality Merchandise at Honest Prices.

In old New York Store Building

White Barber Shop

J. F. O'Donnell

Under the Bon Marche

You will like the service we give as well as you like this Annual.

SWIMMING POOL

Just to let you know that it won't be many days until Clay Center's New up-to-date Swimming Pool will be open for business. This pool is one of the finest and most up-to-date pools in the State. 72,909 gallons of clean, pure water empties into this pool every 24 hours. It purifies itself every minute. You are sure of clean, pure, warm water. Watch for the opening date.

CLAY CENTER SWIMMING POOL

South Sixth Street

OTTO BRENNER, Proprietor

For Good Things to Eat Call at

Alquist's
GROCERY

Everything First Class; Everything Guaranteed.
Both Phones 62.

THE ONLY SET OF ABSTRACT BOOKS IN THE COUNTY.

ERIC H. SWENSON

Special attention given to Real Estate Loans,
Steamship Tickets, Travelers' Checks, Foreign Exchange.

Fire, Lightning, Cyclone, Wind Storm and Hail Insurance.

CLAY CENTER, KANSAS.

Make Your Dream of Home Come True

Home Lumber and Coal Co.

Telephone 105

Free Plan Service

Gingrich Hardware

FOR QUALITY AND SERVICE

Both Phones 17

North Side of Square

Footwear For You At All Times

When you need footwear, we have what you want, and in the wanted colors and styles.

They are priced to suit, too.

NEILL SHOE CO.

Hosiery

The Red Arrow Shoe Store

Foot Appliances

CIGARS

TOBACCOS

LUNCHES

Blue Ribbon Bakery

R. F. HESLER, Prop.

444 Lincoln Ave.

The Home of Good Things to Eat

CAKES

PIES

ROLLS



BONHAM HOTEL



ROCK ISLAND DEPOT



VAN CUREN HOTEL LOBBY



VAN CUREN COFFEE SHOP



SWIFT & CO. PRODUCE HOUSE



BRANT GREEN HOUSE

Everything in Good Hardware

Including the Famous Red Star Gas Stoves, which are used in the Domestic Science Department of C. C. C. H. S. Beautiful Copper Clad and Dainty Banquet Ranges. Incomparable Winchester Tools and Sporting Goods. **Come In and See Us. It Will Pay You.**

Your money returned in Red Arrow Money.

W. D. Vincent Hardware Company

THE WINCHESTER STORE.

SOUTH SIDE.

Brt Drug Company

Successors to PURITY DRUG STORE

—Our Motto—

Purity plus Service plus Experience

Everything in Drugs, Toilet Goods, Stationery and Cigars.

Soda Fountain in Connection.

Always at your service

Bring us your Prescriptions.

Phone 85

When Planning Your Picnics

and your parties, remember us—we will strive to please you.

Grundal Cash Grocery

Phone United 192.

Co-op. 100

We take this way of thanking the Community High School for the business given us during the year of 1924-25 and hope you have appreciated our service as we have appreciated your business.

Taxi, Auto Livery, Drive-it-Yourself and Baggage.

Two Taxi Co.

Otto Brenner

Ray Beems



Swell Lookers for graduation have
their clothes cleaned and pressed at

KRAMER SUITATORIUM

Next Door Kramer Shoe Shop.
PHONE 103.

Magazines, papers, ice cream, fountain service in connection. Cigars,
tobacco, pipes, smokers' supplies, high grade candies, stationery and
toilet articles.

Miller's NEWS SERVICE

Periodicals
R. R. MILLER, Prop.



Discriminating dressers al-
ways find what they want
at

SELTS Millinery Shop

MEALS

SHORT ORDERS

LUNCHES

COLD DRINKS

The De Luxe Cafe

"WE STRIVE TO PLEASE"

24 HOUR SERVICE

812 5TH ST.

CLAY CENTER, KANS.



WILLIAMSON'S



SNELL'S



POWER PLANT



ICE HOUSE



THE SAND DIP

Professional Cards

W. T. ROCHE,
LAWYER.

United Phone 100, Co-op. 113.

Office in Peoples National Bank Bldg.

DR. E. A. BONAR,

Pyorrhea, Preventive and
Children's Dentistry.

Over Gingrich Hardware.

C. VINCENT JONES,
LAWYER.

Clay Center, Kan.

Practices in all courts, state and federal.

DR. L. P. JOHNSON
DENTIST

United 343; Co-op. 79.

Peoples National Bank Building.

L. E. ALQUIST

DOCTOR OF DENTAL SURGERY.

Union State Bank Building.

Phones: United 356; Co-op. 67.

WARREN H. KERBY

DOCTOR OF DENTAL SURGERY.

BOTH PHONES:

Office Phone 45; Residence 221.

ROBERT ALGIE, M. D.

Physician and Surgeon

Office over Rankin Drug Store

DRS. BENNESON & PETERMEYER

OSTEOPATHIC PHYSICIANS
AND SURGEONS.

Peoples National Bank.

Clay Center, Kan.

NOVELTY REPAIR SHOP

SOUTH FIFTH STREET

D. S. CALL, Proprietor

Clay Center, Kansas.

MISS LAURA AMELUNXEN

Millinery

Latest designs in Millinery

806 Fifth Street

RICE BARBER SHOP

C. C. RICE, Prop.

Third Door West Farmers State Bank

REX SHINE PARLOR

The First Stop After School.

Pop Corn

Candy

CLAY CENTER PLANING MILL CO.CONTRACTORS AND BUILDERS
OF FINE TILE RESIDENCES.

We do our own mill and cabinet work.

Phone 168 United
"Give us a call"

QUALITY

PRICE

HEIMERICH GROCERY

Your business is always appreciated.

CLEANLINESS

SERVICE

FRUITS

GROCERIES

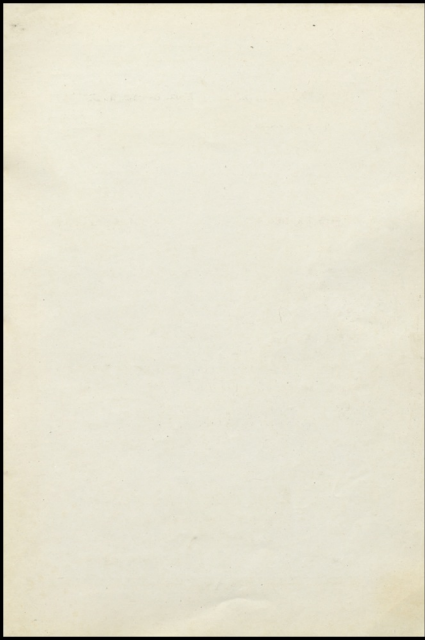
East Side Grocery

One-Half Block North of High School.

CLYDE HAGBERG, Prop.

CANDIES

SCHOOL SUPPLIES



the 1990s, the number of people in the UK who are employed in the public sector has increased by 1.5 million, from 2.5 million in 1980 to 4 million in 1995. The public sector has grown from 10% of the economy to 15% of the economy.

There are a number of reasons for this increase. One of the main reasons is the increase in the number of people who are employed in the public sector. This is due to a number of factors, including the increase in the number of people who are employed in the public sector, the increase in the number of people who are employed in the public sector, and the increase in the number of people who are employed in the public sector.

Another reason for the increase in the number of people employed in the public sector is the increase in the number of people who are employed in the public sector. This is due to a number of factors, including the increase in the number of people who are employed in the public sector, the increase in the number of people who are employed in the public sector, and the increase in the number of people who are employed in the public sector.

A third reason for the increase in the number of people employed in the public sector is the increase in the number of people who are employed in the public sector. This is due to a number of factors, including the increase in the number of people who are employed in the public sector, the increase in the number of people who are employed in the public sector, and the increase in the number of people who are employed in the public sector.

A fourth reason for the increase in the number of people employed in the public sector is the increase in the number of people who are employed in the public sector. This is due to a number of factors, including the increase in the number of people who are employed in the public sector, the increase in the number of people who are employed in the public sector, and the increase in the number of people who are employed in the public sector.

A fifth reason for the increase in the number of people employed in the public sector is the increase in the number of people who are employed in the public sector. This is due to a number of factors, including the increase in the number of people who are employed in the public sector, the increase in the number of people who are employed in the public sector, and the increase in the number of people who are employed in the public sector.

A sixth reason for the increase in the number of people employed in the public sector is the increase in the number of people who are employed in the public sector. This is due to a number of factors, including the increase in the number of people who are employed in the public sector, the increase in the number of people who are employed in the public sector, and the increase in the number of people who are employed in the public sector.

A seventh reason for the increase in the number of people employed in the public sector is the increase in the number of people who are employed in the public sector. This is due to a number of factors, including the increase in the number of people who are employed in the public sector, the increase in the number of people who are employed in the public sector, and the increase in the number of people who are employed in the public sector.





PRESS OF THE TIMES

CLAY CENTER, KANSAS

