

T.E.A.M.

Talent **E**nrichment and **A**cceleration
at **M**arion

4-6th Grade
Identified
Pull-Out



K-6 Discovery
Whole Group
Enrichment

2018-2019

T.E.A.M. Faculty

Leah Schmidt- MSD Gifted and Talented Coordinator and

4-6 Identified Pullout at Marion Visual and Performing Arts Magnet

Donna Dillahunty: 4-6 Identified Pullout at Marion Math Science and Technology magnet and 4-6 Pullout at Herbert Carter Global Community

Polly Glass: K-6 Discovery (Whole Group Enrichment) at Herbert Carter Global Community Magnet

Kim Watson: K-6 Discovery (Whole Group Enrichment) at Marion Visual and Performing Arts Magnet

Leslie Lantrip: K-6 Discovery (Whole Group Enrichment) at Marion Math Science Technology Magnet

So.... “Gifted”...what does that mean?

Gifted and Talented children and youth are those of high potential or ability whose learning characteristics and education needs require **QUALITATIVELY** differentiated educational experiences and/or services.

Talents and Gifts are evidenced through:

1. Above-Average Intellectual Ability
2. Task commitment and/or motivation
3. Creative ability

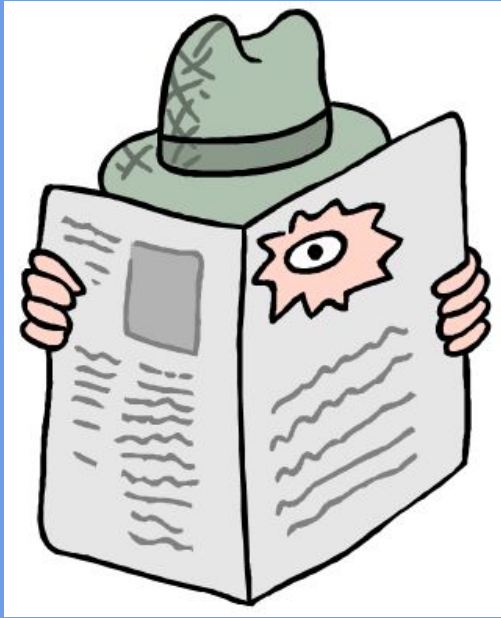


Statistically....



.....between 3%
and 5% of the
student
population is
gifted/talented

Kindergarten through 3rd grade...



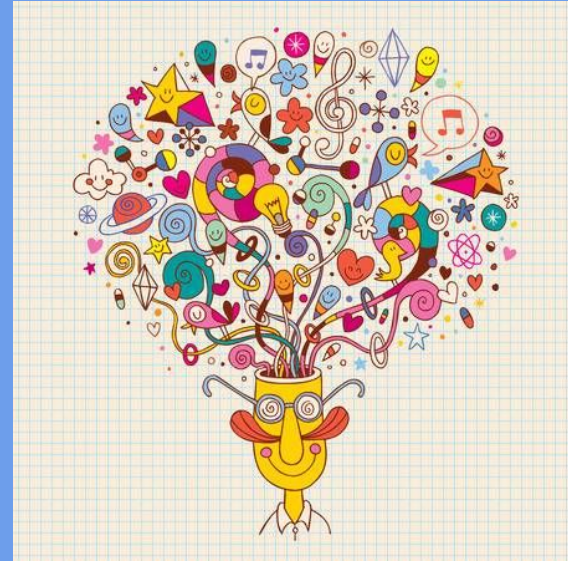
We have been
watching you!

K-3 Discovery Whole Group
Enrichment

Discovery Classes

A minimum of 30 minutes weekly of Whole Group Enrichment is required for K-3

- Taught by certified GT teacher
- Auxiliary class rotation schedule
- Incorporates the Magnet theme
- Critical and Creative Thinking
- Data is collected for future identification purposes
- Now offered K-6!!



Referral Process

Who can refer?

- Parent
- Teachers
- Administrator
- Peers
- Student themselves
- ANYONE!!**



Referrals are accepted at any time!

So my kid has been referred.....

So... they “MADE IT” to GT, RIGHT??

- **NOT** a CONTEST
- **NOT** a Club
- **NOT** a Privilege
- Placement is based on *NEED*
- Evaluation/Testing period
- Staffing Committee
- Parent Permission



What evaluations/tests did they take?

Objective Measures

All students regardless if they receive a referral or not take:

1st Grade: **GIFT** Test (Creative Potential)

2nd Grade: **RAVEN** (Spatial Reasoning)

3rd Grade: **CogAT** (Cognitive ability)

After after a referral during 3rd grade and up...

Torrance: Creative Abilities

KBIT 2: IQ

InView: Cognitive Abilities (4th and up)

ACT Aspire

What Are The Tests/Evaluations?

GIFT: **G**roup **I**nventory for **F**inding Creative **T**alent

This inventory is given to ALL 1st graders in the Spring semester.

WHAT DOES IT LOOK FOR?????

Many Interests - High scorers are interested in art, writing, learning about life long ago and in other countries and enjoy many hobbies.

Independence - High scorers enjoy aloneness. They prefer challenge and are not afraid to be different than their peers.

Imagination - High scorers are curious, enjoy questioning, make believe and humor



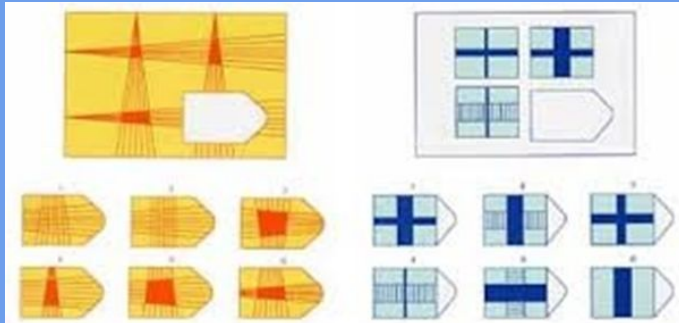
What Are The Tests/Evaluations?

RAVEN:

Raven's Colored Progressive Matrices

This test is given to all 2nd graders in a group setting

What does this test??? **Spatial Reasoning Ability**



The “Puzzle Test”

What Are The Tests/Evaluations?

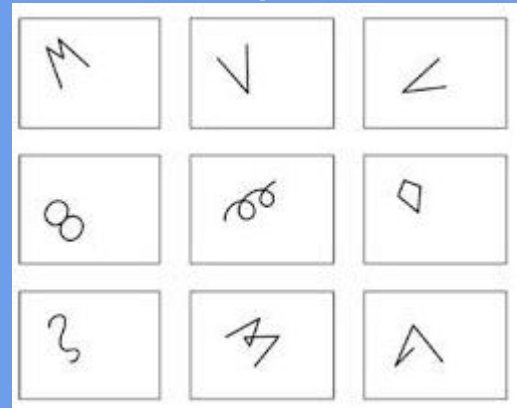
Torrance Figural Creativity Test

Given to 3-12 new referrals in small group setting.

These tests invite examinees to draw and give a title to their drawings (pictures) or to write questions, reasons, consequences and different uses for objects (words).

5 mental abilities are assessed during the exercises:

- FLUENCY
- ELABORATION
- ORIGINALITY
- RESISTANCE TO PREMATURE CLOSURE
- ABSTRACTNESS TO TITLES



What Are The Tests/Evaluations?

KBIT 2: Kaufman Brief Intelligence Test

Given to all 3-12 New referrals. Individual test.

The **KBIT2** is a measure of the verbal and nonverbal intelligence in children, adolescents, and adults spanning from age 4-90. Scores consist of Verbal, Non-Verbal and an Overall Composite IQ.

Verbal: measures verbal, school-related skills by assessing a person's word knowledge, range of general information, verbal concept formation, and reasoning ability

Non-Verbal: measures the ability to solve new problems by assessing an individual's ability to perceive relationships and complete visual analogies.

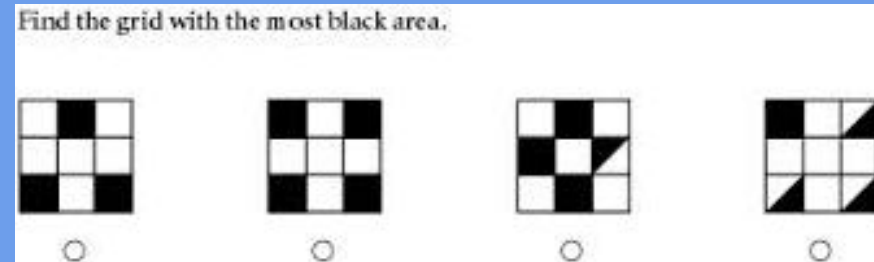
What Are The Tests/Evaluations?

COGAT: given to ALL 3rd and 8th graders.

Cognitive ability test that assesses students' abilities in reasoning and problem solving using verbal, quantitative, and nonverbal (spatial) symbols.

INVIEW: Given to new referrals, referral pool students, and identified GT students in grades 4-7

- Verbal Reasoning-Words
- Verbal Reasoning-Context
- Sequences
- Analogies
- Quantitative Reasoning



What Are The Tests/Evaluations?



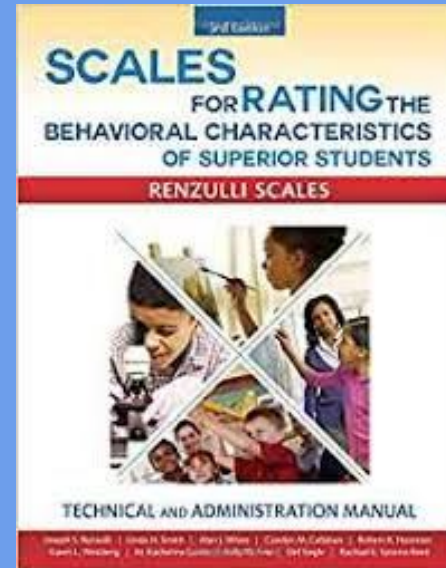
What evaluations/tests did they take?

Subjective Measures

Renzulli-Hartman Rating Scale:

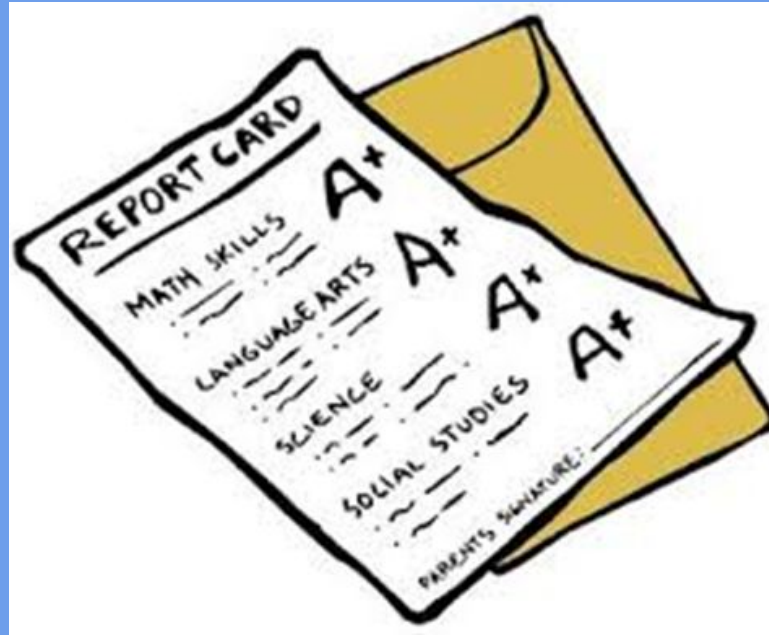
Learning Potential, Creative Potential, Motivation

Rating scales are completed by Parent and Teacher(s).



Are Report Card Grades Used?

Grades are **NOT** used to determine Giftedness!



GIFTED VERSUS BRIGHT STUDENTS



Bright Child	<i>Gifted Learner</i>
Knows the answers	Asks the questions
Is interested	Is highly curious
Is attentive	Is mentally and physically involved
Has good ideas	Has wild, silly ideas
Works hard	Plays around, yet tests well
Answers the questions	Discusses in detail, elaborates
Top group	Beyond the group
Listens with interest	Shows strong feelings and opinions
Learns with ease	Already knows
6-8 repetitions for mastery	1-2 repetitions for mastery
Understands ideas	Constructs abstractions
Enjoys peers	Prefer adults

After testing what happens??

Staffing Committee analyzes student profiles. *Student profiles do not contain student names.*

At least 10 people:

Principals

Counselors

Regular Ed Teachers

T.E.A.M. GT Teachers

GT Coordinator



Staffing takes place in July after all scores have been received and added to students' profiles. Placement letters will go out at the beginning of August.

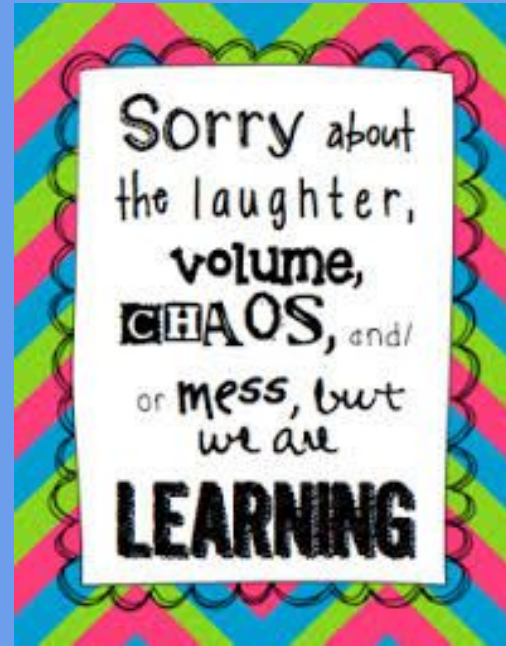
What does it mean if my child does **NOT** place in the TEAM program??

Students who do not place in the TEAM program remain in the referral pool for 3 years for further evaluation and consideration by the staffing committee. Parents are notified again if future placement decisions by the staffing committee change.

T.E.A.M. class: 4-6 Identified Pull-out

A minimum of 150 minutes of direct instruction required

- MSD T.E.A.M Class:
225 minutes weekly!!!
- Supports Magnet theme
- Leadership Skills
- Critical Thinking
- Fosters Creativity
- Investigative Skills
- Affective Needs
- Self-Interest
Exploration



What about 7th-12th grades?

Pre-AP

AP

CONCURRENT CREDIT

AP Coordinator: Sandra Halley
shalley@msd3rg



Leah Schmidt: K-12 GT Coordinator/4-6 TEAM VPA - lschmidt@msd3.org

Donna Dillahunty: 4-6 TEAM MST/TEAM HCGC - ddillahunty@msd3.org

Kim Watson: Discovery VPA- kwatson@msd3.org

Polly Glass: Discovery HCGC- pglass@msd3.org

Leslie Lantrip: Discovery MST llantrip@msd3.org



Follow us!!!



Thank
You!



Thank
You!

Thank you!

thank
you!