



MAY & JUNE NEWSLETTER



Western Salisbury Elementary School

WSE: GROWING LEADERS ONE STUDENT AT A TIME

3201 Devonshire Road, Allentown PA 18103

T: 610-797-1688 F: 610-797-9641

www.stsd.org/wse

Principal's Message

Dear Western Families,

Our May/June newsletter will be the last one this year. It has been my privilege to work with the children, parents and teachers of Western Salisbury Elementary. I thank you for your commitment and support of all we try to accomplish in public education and Western Salisbury in particular.

The end of the year is filled with many wonderful learning opportunities for our children. The fifth graders and their parents will organize their end of year picnic, which will be one of their final opportunities to come together as a class, play and reminisce about their elementary school experiences. Our fourth graders will visit the Hydromania exhibit at Cedar Crest College and tour our state capitol in Harrisburg. The third grade class is trying something new this year. They will explore Leader in Me Habit 6, Synergize, when they try the ropes course at Fernwood in East Stroudsburg. Second graders visited the DaVinci Center and will travel to the Wildlands Conservancy. First grade is headed to Crystal Cave to explore stalactites and stalagmites and also to Lehigh University to enjoy a play. And, kindergarten will explore color and creativity at the Crayola Factory. On Monday, June 5th, the children will enjoy two special events: arrival of the Fire Engine carrying the winners of the Fire Safety Contest and the all school Butterfly Release, both events to occur in front of the school at approximately 9:00 AM. None of these extraordinary experiences would be possible without your ongoing support of our PTA fundraisers. Thank you so much for all you do for our children.

Congratulations to Angelina Peters who will be representing Western as our school board reporter at the May 10th School Board meeting. We continue to embrace the ideas and habits behind the Leader in Me. Author, Dr. Yvonne Blears, will lead an assembly sharing ideas about being a good leader for yourself and others from her children's book, A-Z of Being the Best Leader You Can Be.

Our third graders will entertain their peers and families with a recorder concert and our chorus will offer lively entertainment at our Spring concert on May 10th. The weather was a bit chilly for the K-2 Field Day event, but thankfully, the rain held off. Students synergized and "sharpened the saw" through the many fun games and activities that Mr. Ludwig organized and our teachers supported. Thank you to our parent volunteers without whom the event would not be possible. We hope for a sunny day on May 22nd, for our Grades 3-5 Field Day. On May 23rd at 7PM, the WSE Band will perform with the HST Band at an all district elementary concert at the Harry S. Truman elementary school auditorium.

WSE parents, through our PTA, hosted an extraordinary Hawaiian themed staff appreciation luncheon during the first week of May. Our staff was so appreciative of the barbecued pork, rice, deli salads, chicken, and many other delicious side dishes. The chocolate fountain was our yummy dessert and the costumed servers in grass skirts and coconuts made us smile. I know how hard our staff works to provide our children with an excellent education in a loving and caring environment. It is so gratifying to know our families recognize and appreciate all of their efforts. I know the staff is truly thankful for your kindness.

The Salisbury School District Art Show will be held at Salisbury High School on Wednesday, May 10th from 5:00-8:00 pm. Please be sure to stop in. Every student in the Salisbury Township School District has at least one piece of artwork on display.

On May 24th at 9:30 a.m. we will host a welcome and information event for families of kindergarteners who have registered since February. We will host another welcome and information event on August 17th. If you know of anyone who intends to enroll their youngster at WSE for 2017-18, please share this information with them.

On Friday, May 19th we will host our annual Leadership Day. On this day the children showcase for our visitors all that they have accomplished this year to support our community and to grow as future leaders. You are most welcome to attend, but you must pre-register on the Sign-Up Genius site, found on our school webpage. Due to the number of expected guests, we can only accommodate parents who pre-register. Be sure to ask your child what his/her class is doing for the showcase and if s/he has a special role. We will end the day with an all school gathering in the gym.

On Thursday, June 8th, at 1:30 PM with happy hearts, we will promote our kindergarteners to first grade. This event is a tradition here at WSE. Parents are invited to join us as our kindergarteners showcase what they have learned and watch a slideshow of important events across their first year of school.

On Friday, June 9th at 9:30 a.m. with smiles and some tears, we will promote our 5th graders to middle school. We know they will take with them the compassion, honesty and passion for learning they have shown here at WSE. We invite parents to join in this most important occasion.

Please remember to send in notes or call early in the day if your child is taking alternate transportation home or is being picked up by someone other than the usual adult. As stated in our school handbook: *If your child needs to go home with another student (for play date, after school activity, afterschool care, etc.), both the sending and receiving parent must send a note to school on the day of the event.*

Here are just a few reminders as we wind down the school year.

- There will be an early dismissal at 1PM on May 12th for teacher professional development.
- School is closed for teacher professional development on Thursday, May 25th and Friday, May 26th.
- School is closed for the Memorial Day holiday on Monday, May 29th.
- There will be early dismissals on the last two student days:
 - Friday, June 9th, 1PM Dismissal. Lunch will be served.
 - Monday, June 12th, 11:00 AM Dismissal. Lunch will not be served.

The summer will be relatively quiet as far as renovation work here at WSE. Therefore, Lehigh Valley Child Care expects to conduct its summer program on-site. Please see daycare personnel for more details about their program. Salisbury School District will offer summer library hours at Salisbury Middle School. WSE's librarian will ensure that there is an extensive collection of elementary library books at the middle school. Please check our website for the days and hours the library will be open. Summer office hours are 8:00 a.m. to 3:00 p.m. with a closure for lunch time and occasional all district training of office staff. Please call the office ahead of time if you need to conduct school business.

The 2017-2018 school year begins on Monday, August 28th with Kindergarten Orientation Day. This is a school day where only kindergarteners attend so they may "get their feet wet" in the building without the busyness of all of the other students in session. All students, K-5, report on Tuesday, August 29st for a full day of school.

We hope you will have time this summer to practice Leadership Habit #7, Sharpen the Saw, by enjoying the outdoors, spending time with family, and getting some much needed rest. Have a wonderful summer!

Sincerely,

Grace Hartman

Grace Hartman

"So often you find that the students you're trying to inspire are the ones that end up inspiring you."- Sean Jenkins

Important News



FIELD DAY

Field Day for Kindergarten, 1st, and 2nd Grade took place on Monday, May 8th.

The children and parents had a great time participating in activities that Mr. Ludwig planned. Thank you to our parent volunteers! **Field Day for 3rd, 4th, & 5th Grade will take place on Monday, May 22nd, 1:30PM – 3PM (rain date, 6/1).** Many fun and exhilarating activities are planned for the students this year! Please remember to apply sunblock before school on field day. A special Thank You to Mr. Ludwig for organizing this much loved elementary school tradition and to the parent volunteers, who make it all possible!

LEADERSHIP DAY 2017

You are invited to see how Leader In Me is being used to enhance students' education and leadership skills at Western Salisbury Elementary School. Please join us at Leadership Day 2017 on **May 19th at 1:30pm.**

Click the link below to RSVP ASAP. [Sign Up Genius](#)

The
LeaderinMe™
great happens here

3RD GRADE RECORDER CONCERT AND 4TH & 5TH GRADE

CHORUS CONCERT



The 3rd Grade Recorder Concert and 4th and 5th Spring Chorus Concert will be held on Wednesday, May 10th at 2pm, in the school gym. The concert will feature all students in 3rd grade and the students in afterschool chorus. Siblings in other grades **will not** be permitted to leave class to attend the concert due to room capacity limitations. They will have an opportunity to see the concert at another time during the school day.

Upcoming Events:

MAY

- **5/10:** 3rd Grade Recorder/ 4th/5th grade Chorus Concert
 - Board Meeting @ 7:30
- **5/12:** Early Dismissal @ 1PM
- **5/16:** First Grade Portfolio Picnic @ 11:30
- **5/17:** New Family Welcome @ 9:30
- **5/19:** Leadership Day @ 1:30-3pm
 - Color-a-thon and Spring Fling @ 6:30
- **5/22:** Field Day Grade 3-5
 - Curriculum and Development meeting @ Admin. @ 7pm
 - Coffee & Conversation @ Admin.
- **5/23:** 4th & 5th Grade Band Concert @7pm @ HST
 - 1st Grade Field Trip to Crystal Cave
 - 2nd Grade Field Trip to Wildlands
- **5/24:** Kinder. Field Trip to Crayola
- **5/25 thru 5/29:** NO SCHOOL!
 - Happy Memorial Day!



Important News

Kindergarten Promotion:

Our Kindergarten promotion ceremony will be held on **Thursday, June 8th, from 1:30PM-3:00PM**. Please join us on this special day honoring our “**future first graders**”.



Fifth grade Graduation:

Fifth Grade graduation will take place on **Friday, June 9th, from 10:30-12:00PM**, in the gymnasium. We welcome families to come to celebrate this momentous occasion as we bid farewell to our fabulous fifth grade students.

LAST DAY OF SCHOOL:

Reminder, due to the snow days the last day of school for the year will be Monday, June 12th, with an early dismissal @ 11:15.



THANK YOU, GOODBYE, CONGRATULATIONS, AND CONDOLENCES

Farewell to Mrs. Carla Tallarida. Carla has been a part of the WSE family, as a nurse in our health room, for twenty-one years. Thank you for taking care of our students- we will miss you! Congratulations on your retirement!

Upcoming Events:

JUNE

- **6/2:** Butterfly release
 - Fire truck ride to School
 - 5th Grade picnic
 - WSE Night @ Menchies
- **6/5:** Operations Committee @ Admin. @ 7pm
 - 4th Grade Field Trip to Harrisburg
- **6/8:** Kindergarten Promotion @ 1:30
- **6/9:** 5th Grade Graduation @ 10:30
EARLY DISMISSAL @ 1PM
IRON PIGS GAME @ 7PM
- **6/12: LAST DAY OF SCHOOL!**
 - DISMISSAL @ 11:15AM
 - Curriculum & Technology Meeting @ Admin. @ 7pm

HAVE A HAPPY and SAFE SUMMER!



SEE YOU IN SEPTEMBER!!!



Use of the WIDA-ACCESS Placement Test (W-APT) for English Language Proficiency Screening, Program Placement, and ACCESS for ELLs Tier Selection

The Basic Education Circular (BEC), Educating Students With Limited English Proficiency (LEP) and English Language Learners (ELL), requires LEAs to use the WIDA ACCESS Placement Test (W-APT) to assess students for potential placement in language instruction educational programs (LIEP) for English language learners (ELL). The W-APT is an identification and placement assessment, which is aligned to the required annual state English language proficiency (ELP) assessment. It is an initial measure of a student's English language proficiency and informs placement in an English as a second language (ESL) or bilingual program in Pennsylvania.

The W-APT is administered only to **newly enrolling** students who have been identified as potentially needing ESL or bilingual education, based on the results of the home language survey. These newly-enrolling students would be those who have recently arrived in the U.S. and/or those who are first enrolling in a particular school. Students already in ESL programs are assessed annually using Pennsylvania's English language proficiency assessment, ACCESS for ELLs 2.0®. Students are **NOT** assessed annually using the W-APT.

The W-APT measures the English language proficiency of the student and is used, in combination with other multiple criteria, to help to determine whether or not a child is in need of English language development instruction. Local education agencies (LEA) may choose to use other formal, standardized assessments for additional information, but identification and placement must be based on the W-APT scores. LEAs are encouraged to use the WIDA MODEL™ series of assessments, available from WIDA as additional information and as formative assessment tools; however, the W-APT remains the required placement-testing tool.

On **Wednesday, May 17th** our **ESL** students will be hosting an end of the year Cultural Celebration. We will try foods from around the world and play games from different

countries. A variety of ethnic dishes will be provided for our students. We will be celebrating our cultural diversity from 11:25 to 1:00 in room 203.

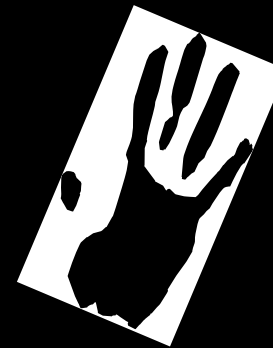
Parents of ESL students are welcome to join us, on May 17th! Here are some of the placemats our students are working on from their countries. If you have any questions about the ESL Program, please contact Mrs. Murray at 610-797-1688 ext 5203.





WSE PTA Pride

Every Child; One Voice



Western Salisbury Elementary School Parent Teacher Association:
A strong advocate and valuable resource for the education and well-being of our students.

One last message from your (retiring) PTA president,

It has truly been my heartfelt pleasure serving as WSE's PTA president for the past three years. I have enjoyed working with so many volunteers, students, teachers, staff and administrators to help provide what I hope have been fun and meaningful events and programs for our kids. Your support and participation is so very much appreciated!

While I will continue to serve next year as your past president designing all the event flyers, I am excited about the new board leadership. Ken Kaough is stepping up as president, Karin Kao is your new secretary, Dana Graham is VP of fundraising, Paul Juhasz has a new position as VP of compliance, Sarah Nemitz is staying on as treasurer, and Siuzanne Nichols is joining us as membership coordinator. (We're still looking for a volunteer coordinator – email me!) This team is already working hard to organize fresh new fundraisers for next year. Thanks also to Sebastian van Beek, who is finishing his 4th year of board service. With his fundraising efforts, we have helped pay for gazillions of after-school clubs, assemblies, t-shirts, school gifts, and other great student programs.

We still have a few weeks left. Here are reminders about upcoming PTA events:

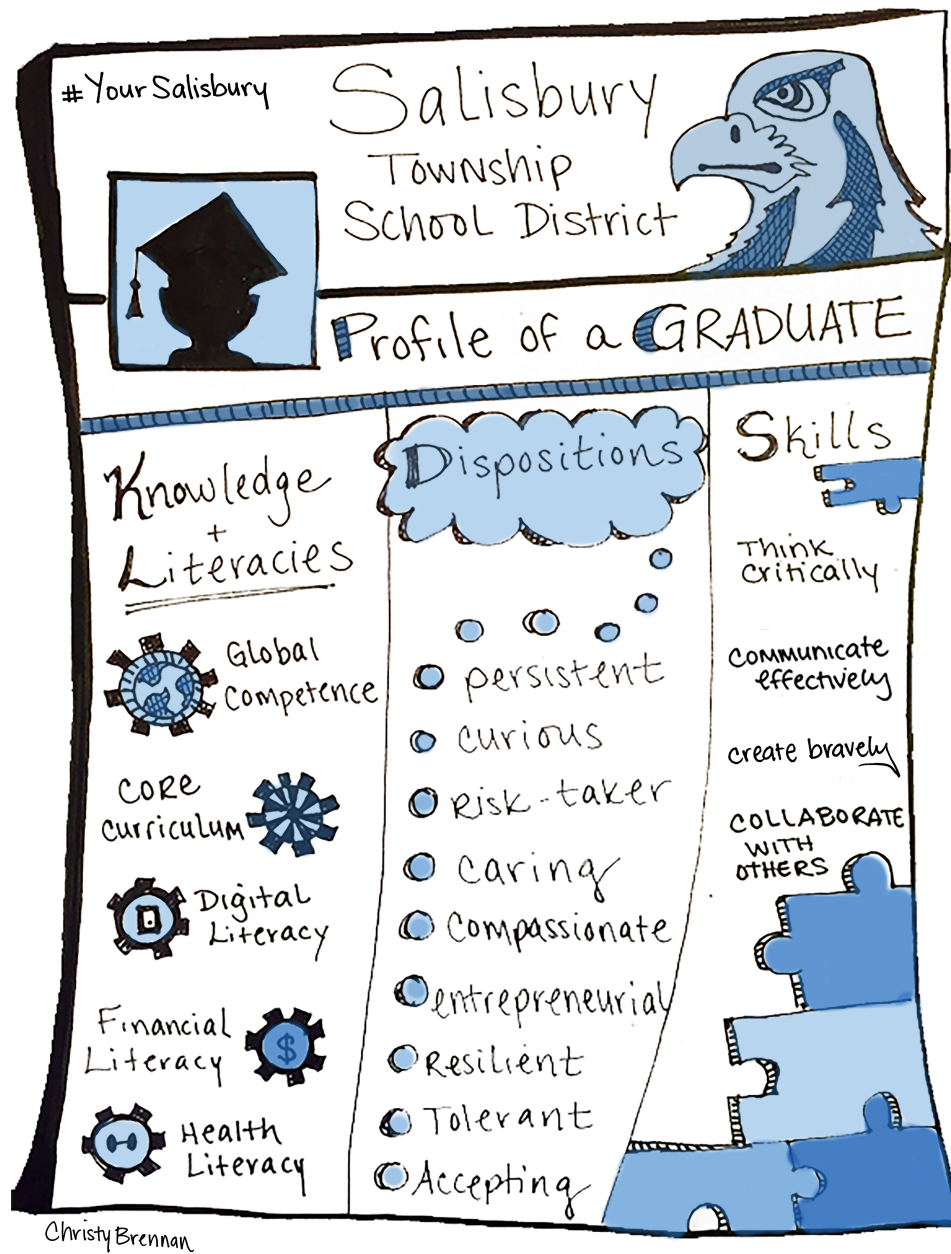
- | | |
|------|--|
| 5/17 | Deadline to RSVP for Spring Fling After Party |
| 5/19 | Color-a-Thon: registration @5:30pm, run @6:30-7pm |
| 5/19 | Spring Fling After Party/5 th Grade Blast-Off @7-8:30pm |
| 5/30 | STFD at Leadership Gathering to announce fire truck ride winners |
| 6/2 | Fire Truck Ride to School (9am) followed by Butterfly Release |
| 6/2 | Menchie's Art Show (all day till 9pm) |
| 6/9 | Iron Pigs game, 7pm |



Thanks as always for supporting WSE PTA, and have a great summer!

Marci Stappung

PROFILE OF A GRADUATE



SALISBURY TOWNSHIP SCHOOL DISTRICT

LEARNING BELIEFS

