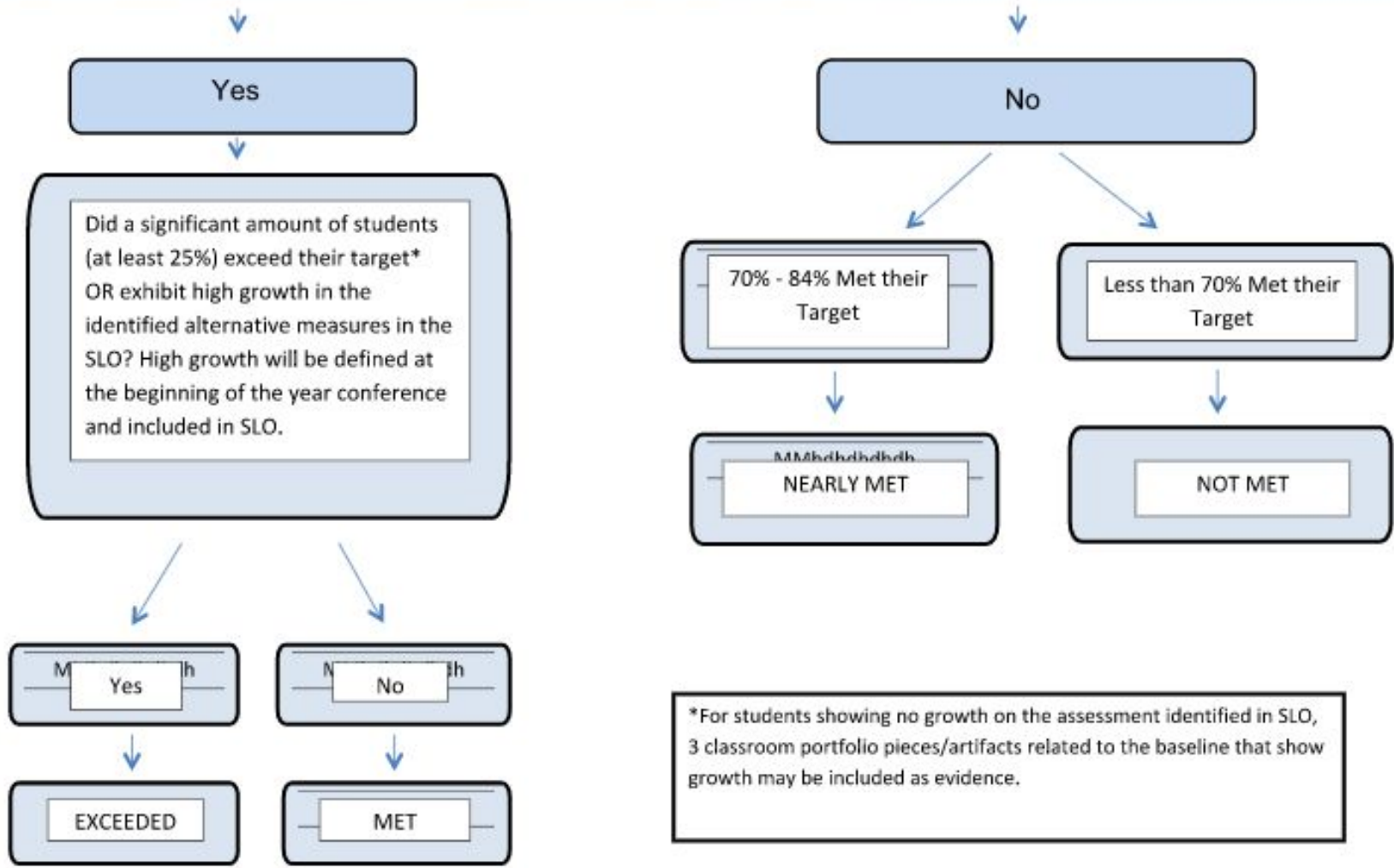


# SLO Scoring Guidance Flowchart

Did all or almost all students (85% or more) reach their targets AND did the remaining 15% make \*some growth barring extenuating circumstances (40 or more days out of class, medical exemptions, new to district and have missed at least 40 days or 20% of a course that is less than 1 year long)?



\*For students showing no growth on the assessment identified in SLO, 3 classroom portfolio pieces/artifacts related to the baseline that show growth may be included as evidence.