

Name \_\_\_\_\_  
Date \_\_\_\_\_  
Section \_\_\_\_\_

The **A** corresponds to the indicated Learning Outcome(s) listed at the beginning of the laboratory exercise.

# Cell Cycle

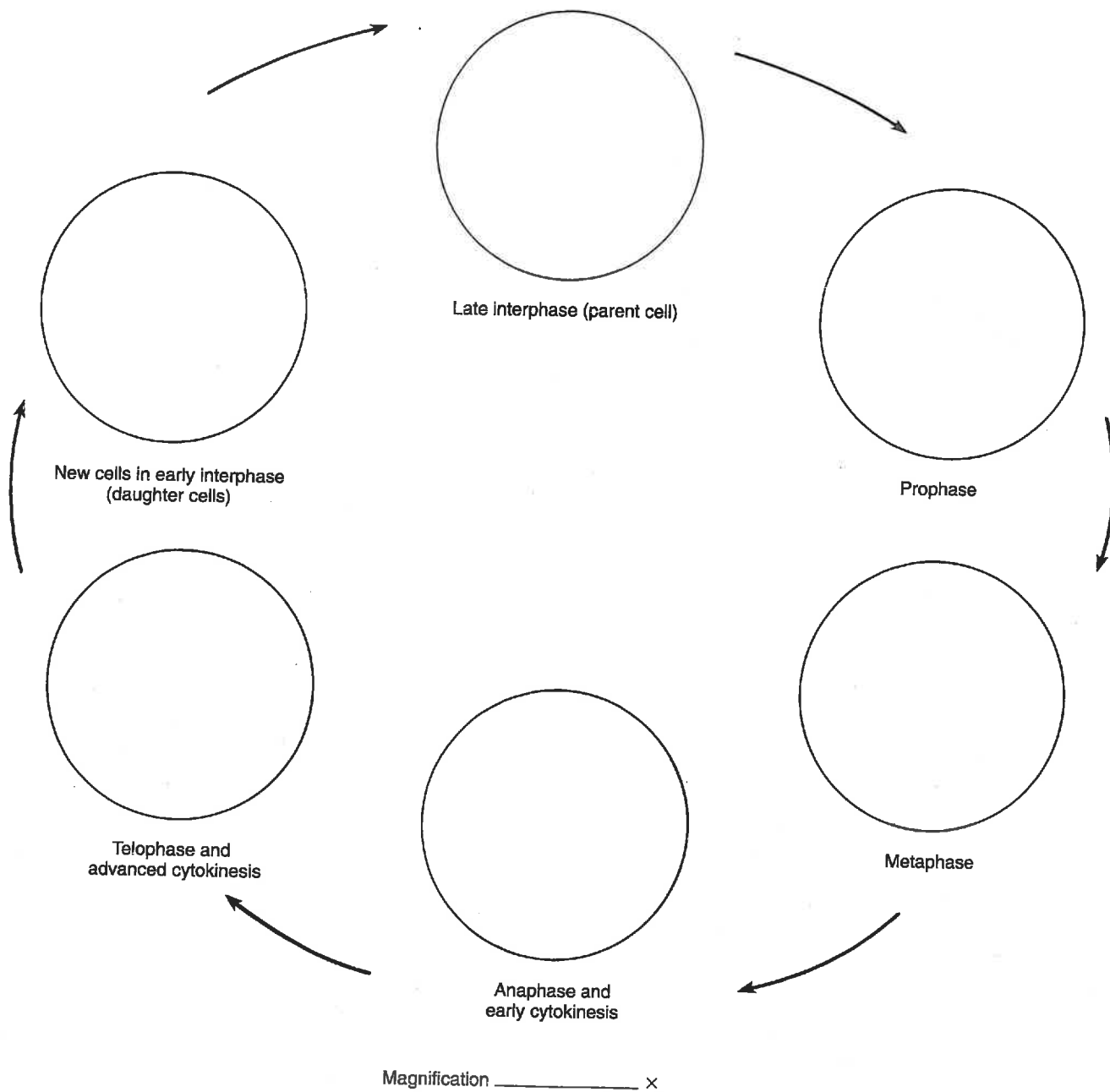
## Part A Assessments

Complete the table. **A**

Stage	Major Events Occurring
Interphase (G <sub>1</sub> , S, and G <sub>2</sub> )	
Mitosis Prophase	
Metaphase	
Anaphase	
Telophase	
Cytokinesis	

## Part B Assessments

Sketch an interphase cell and cells in different stages of mitosis to illustrate the whitefish cell's life cycle. Label the major cellular structures represented in the sketches and indicate cytokinesis locations. (The circles represent fields of view through the microscope.)



## Part C Assessments

Complete the following:

1. In what ways are the new cells (daughter cells), which result from a cell cycle, similar? \_\_\_\_\_
2. How do the new cells slightly differ? \_\_\_\_\_
3. Distinguish between mitosis and cytokinesis. **A** \_\_\_\_\_

## Part D Assessments

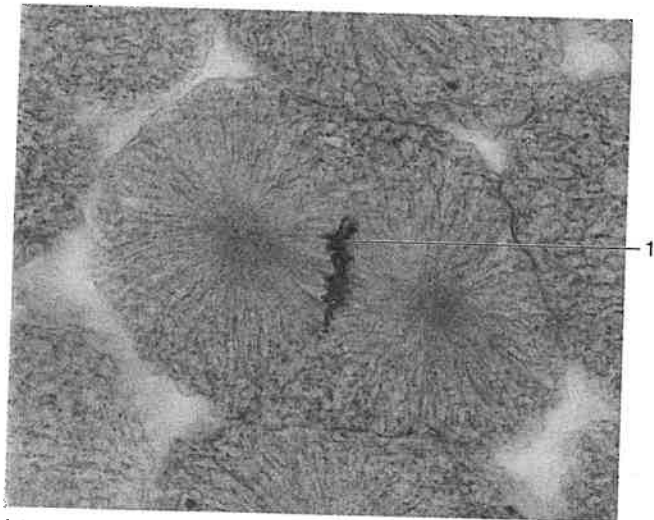
Identify the mitotic stage represented by each of the micrographs in figure 7.5(a-d). **A**

- |          |          |
|----------|----------|
| a. _____ | c. _____ |
| b. _____ | d. _____ |

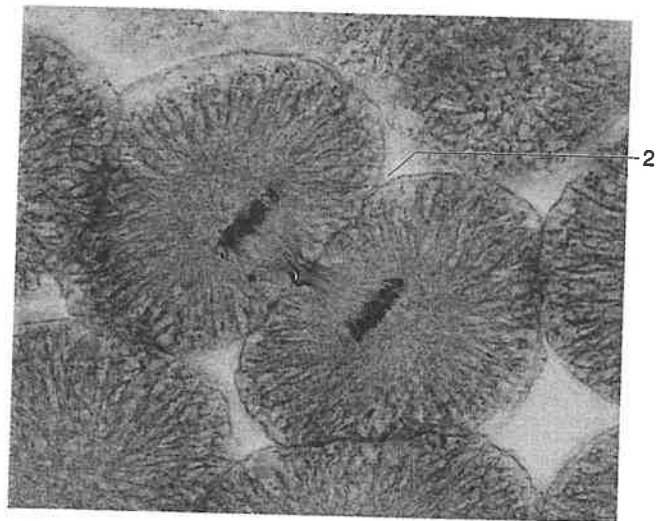
## Part E Assessments

Identify the structures indicated by numbers in figure 7.5. **A**

- |          |          |
|----------|----------|
| 1. _____ | 4. _____ |
| 2. _____ | 5. _____ |
| 3. _____ | 6. _____ |

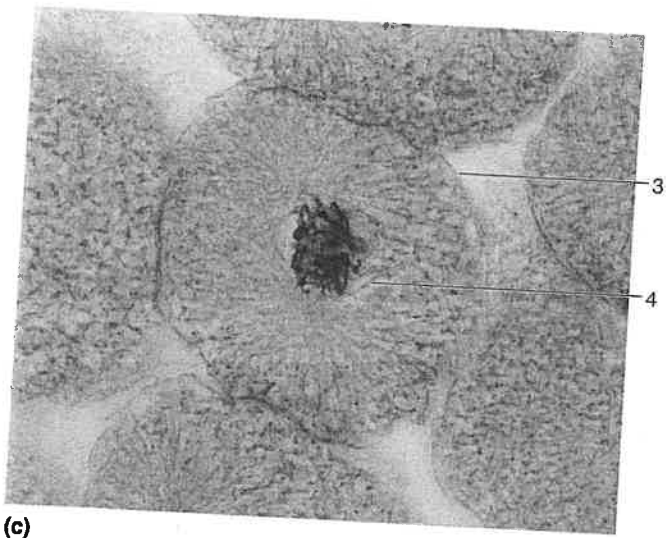


(a)



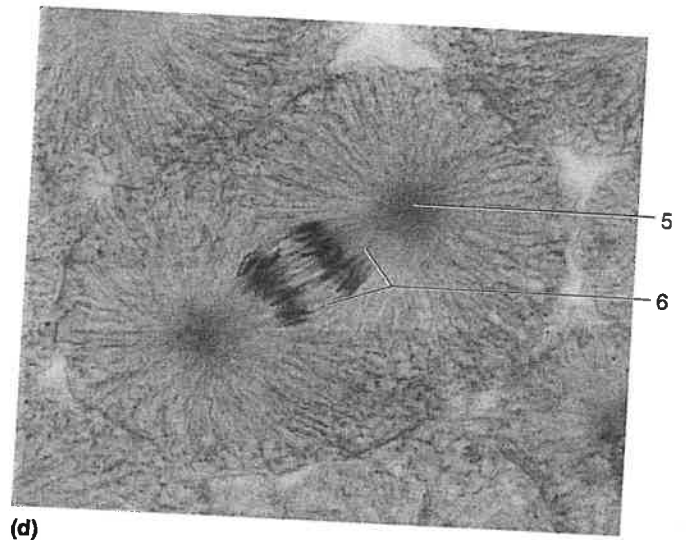
(b)

**Figure 7.5** Identify the mitotic stage and structures of the cell in each of these micrographs of the whitefish blastula (250 $\times$ ).



(c)

**Figure 7.5** *Continued.*



(d)