

Name _____

Date _____

Section _____

The _____ corresponds to the indicated Learning Outcome(s) listed at the beginning of the laboratory exercise.

Eye Structure

34

Part A Assessments

Match the terms in column A with the descriptions in column B. Place the letter of your choice in the space provided. 1 2

Column A

- a. Aqueous humor
- b. Choroid coat
- c. Ciliary muscles
- d. Conjunctiva
- e. Cornea
- f. Iris
- g. Lacrimal gland
- h. Optic disc
- i. Retina
- j. Sclera
- k. Suspensory ligament
- l. Vitreous humor

Column B

- _____ 1. Posterior five-sixths of middle (vascular) tunic
- _____ 2. White part of outer (fibrous) tunic
- _____ 3. Transparent anterior portion of outer tunic
- _____ 4. Inner lining of eyelid
- _____ 5. Secretes tears
- _____ 6. Fills posterior cavity of eye
- _____ 7. Area where optic nerve exits the eye
- _____ 8. Smooth muscle that controls light entering the eye
- _____ 9. Fills anterior and posterior chambers of the anterior cavity of the eye
- _____ 10. Contains visual receptors called rods and cones
- _____ 11. Connects lens to ciliary body
- _____ 12. Cause lens to change shape

Complete the following:

13. List the structures and fluids through which light passes as it travels from the cornea to the retina. 3 _____

14. List three ways in which rods and cones differ in structure or function. 2 _____

Part B Assessments

Complete the following:

1. Which tunic/layer of the eye was the most difficult to cut? 4 _____
2. What kind of tissue do you think is responsible for this quality of toughness? 4 _____
3. How do you compare the shape of the pupil in the dissected eye with your pupil? 4 _____

4. Where do you find aqueous humor in the dissected eye? 4 _____

5. What is the function of the dark pigment in the choroid coat? 2 _____

6. Describe the lens of the dissected eye. 4 _____

7. Describe the vitreous humor of the dissected eye. 4 _____

Part C Assessments

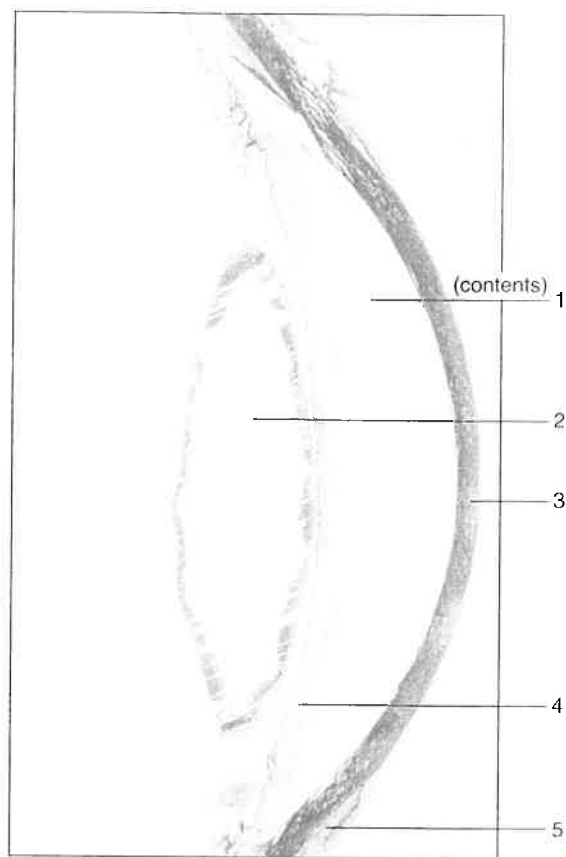
Identify the features of the eye indicated in figure 34.11. 1

a. Anterior portion of eye:

1. _____
2. _____
3. _____
4. _____
5. _____

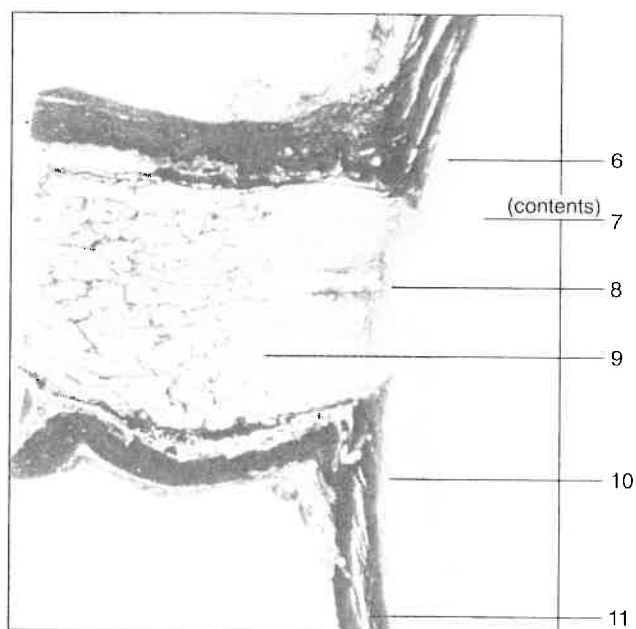
b. Posterior portion of eye:

6. _____
7. _____
8. _____
9. _____
10. _____
11. _____



(a)

Terms:
 Aqueous humor
 Choroid coat/middle tunic
 Conjunctiva
 Cornea
 Iris
 Lens
 Optic disc
 Optic nerve
 Retina/inner tunic
 Sclera/outer tunic
 Vitreous humor



(b)

Figure 34.11 Sections of the eye: (a) anterior portion (10 \times); (b) posterior portion (53 \times). Identify the numbered features, using the terms provided.