

Name _____
Date _____
Section _____

The **A** corresponds to the indicated Learning Outcome(s) listed at the beginning of the laboratory exercise.

Joint Structure and Movements

Part A Assessments

Match the terms in column A with the descriptions in column B. Place the letter of your choice in the space provided. **A A**

Column A

- a. Gomphosis
- b. Suture
- c. Symphysis
- d. Synchondrosis
- e. Syndesmosis

Column B

- _____ 1. Immovable joint between flat bones of the skull united by a thin layer of dense connective tissue
- _____ 2. Fibrocartilage pad fills the slightly movable joint
- _____ 3. Temporary joint in which bones are united by bands of hyaline cartilage
- _____ 4. Slightly movable joint in which bones are united by interosseous membrane
- _____ 5. Joint formed by union of tooth root in bony socket

Part B Assessments

Identify the types of structural and functional joints numbered in figure 18.4. **A A**

- 1. _____
- 2. _____
- 3. _____
- 4. _____
- 5. _____
- 6. _____
- 7. _____
- 8. _____
- 9. _____

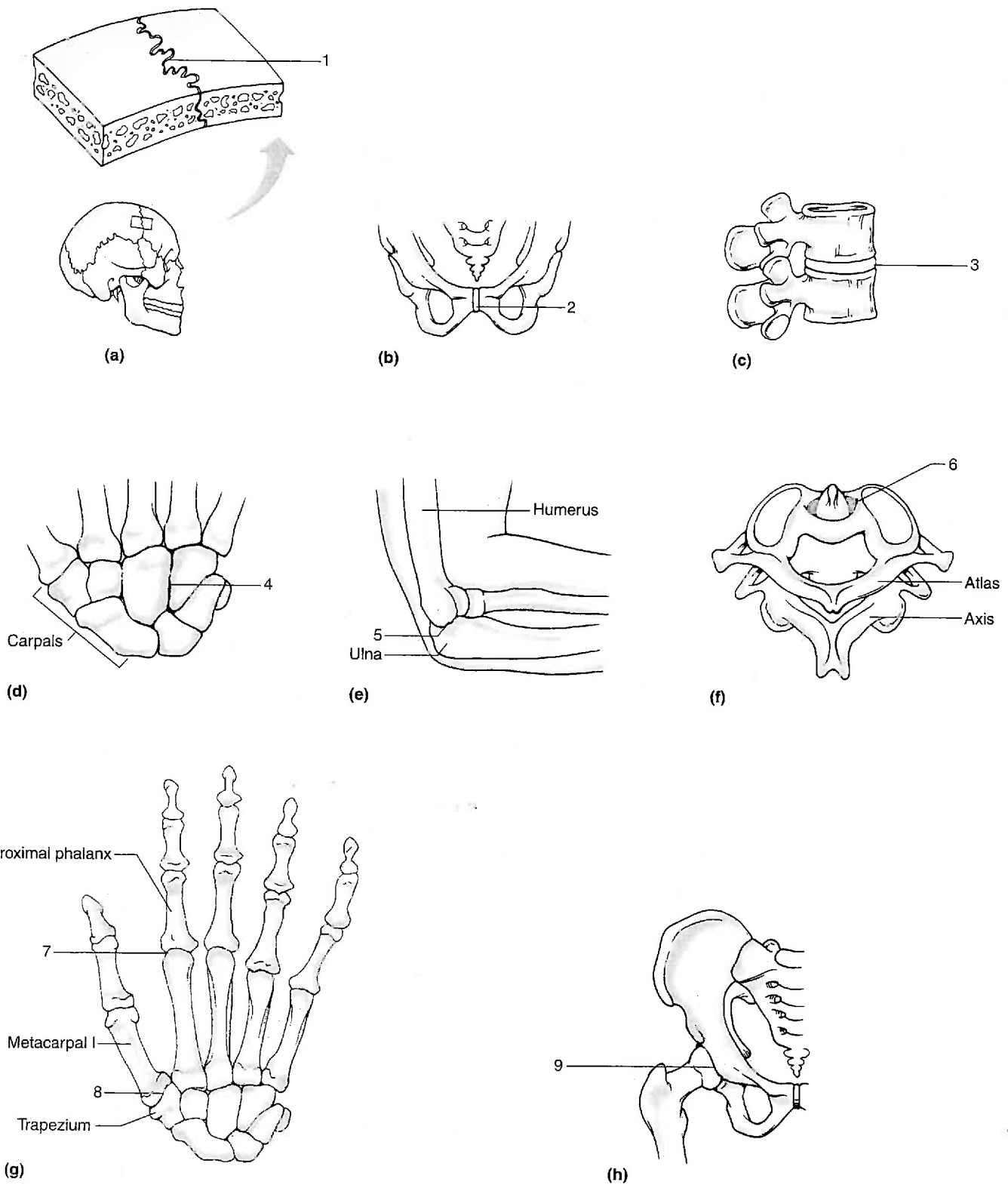


Figure 18.4 Identify the types of structural and functional joints numbered in these illustrations.

Part C Assessments

Match the types of synovial joints in column A with the examples in column B. Place the letter of your choice in the space provided. **3**

Column A

- a. Ball-and-socket
- b. Condylar (ellipsoidal)
- c. Hinge
- d. Pivot
- e. Plane (gliding)
- f. Saddle

Column B

- _____ 1. Hip joint
- _____ 2. Metacarpal-phalanx
- _____ 3. Proximal radius-ulna
- _____ 4. Humerus-ulna of the elbow joint
- _____ 5. Phalanx-phalanx
- _____ 6. Shoulder joint
- _____ 7. Knee joint
- _____ 8. Carpal-metacarpal of the thumb
- _____ 9. Carpal-carpal
- _____ 10. Tarsal-tarsal

Part D Assessments

Complete the following table: **4 5**

Name of Joint	Type of Joint	Bones Included	Types of Movement Possible
Shoulder joint			
Elbow joint			
Hip joint			
Knee joint			

Part E Assessments

Identify the types of joint movements numbered in figure 18.5. **4**

- | | |
|----------------------------------|---------------------------------------|
| 1. _____ (of head) | 15. _____ (of vertebral column/trunk) |
| 2. _____ (of shoulder) | 16. _____ (of vertebral column/trunk) |
| 3. _____ (of shoulder) | 17. _____ (of head and neck) |
| 4. _____ (of hand) | 18. _____ (of head and neck) |
| 5. _____ (of hand) | 19. _____ (of arm at shoulder) |
| 6. _____ (of arm at shoulder) | 20. _____ (of arm at shoulder) |
| 7. _____ (of arm at shoulder) | 21. _____ (of forearm at elbow) |
| 8. _____ (of hand at wrist) | 22. _____ (of forearm at elbow) |
| 9. _____ (of hand at wrist) | 23. _____ (of thigh at hip) |
| 10. _____ (of thigh at hip) | 24. _____ (of thigh at hip) |
| 11. _____ (of thigh at hip) | 25. _____ (of leg at knee) |
| 12. _____ (of lower limb at hip) | 26. _____ (of leg at knee) |
| 13. _____ (of chin/mandible) | 27. _____ (of foot at ankle) |
| 14. _____ (of chin/mandible) | 28. _____ (of foot at ankle) |



Figure 18.5 Identify each of the types of movements numbered and illustrated: (a) anterior view; (b) lateral view of head; (c) lateral view. (Original illustration drawn by Ross Martin)