

2023-2024 District Calendar



**Instructional Planning/
Professional Development**

**Semester
Begins**

**School
Holiday**

**Last Day
Grading Period**

JULY 2023							JANUARY 2024							1 - New Year's Holiday (No Students) 2 - Instructional Planning/ Professional Development (No Students) 3 - Second Semester Begins 15 - Martin Luther King, Jr. Holiday 12 - Grades Sent Home
SU	MO	TU	WE	TH	FR	SA	SU	MO	TU	WE	TH	FR	SA	
						1		1	2	3	4	5	6	
2	3	4	5	6	7	8	7	8	9	10	11	12	13	
9	10	11	12	13	14	15	14	15	16	17	18	19	20	
16	17	18	19	20	21	22	21	22	23	24	25	26	27	
23 30	24 31	25	26	27	28	29	28	29	30	31				
4 - Independence Day (Schools and Offices Closed)														
AUGUST 2023							FEBRUARY 2024							19 - Instructional Planning/ Professional Development (No Students)
SU	MO	TU	WE	TH	FR	SA	SU	MO	TU	WE	TH	FR	SA	
		1	2	3	4	5					1	2	3	
6	7	8	9	10	11	12	4	5	6	7	8	9	10	
13	14	15	16	17	18	19	11	12	13	14	15	16	17	
20	21	22	23	24	25	26	18	19	20	21	22	23	24	
27	28	29	30	31			25	26	27	28	29			
4 - Local Professional Development 7 - Local Professional Development 8 - System Professional Development/Grade Level Summits 9 - Teacher Workday 10 - 1st Semester Begins														
SEPTEMBER 2023							MARCH 2024							7 - End of 3rd Nine Weeks (45 days) 8 - Instructional Planning/ Professional Development (No Students) 15 - Grades Sent Home 25-29 - Spring Break
SU	MO	TU	WE	TH	FR	SA	SU	MO	TU	WE	TH	FR	SA	
					1	2						1	2	
3	4	5	6	7	8	9	3	4	5	6	7	8	9	
10	11	12	13	14	15	16	10	11	12	13	14	15	16	
17	18	19	20	21	22	23	17	18	19	20	21	22	23	
24	25	26	27	28	29	30	24 31	25	26	27	28	29	30	
4 - Labor Day (Schools and Offices Closed)														
OCTOBER 2023							APRIL 2024							26 - Instructional Planning/ Professional Development (No Students)
SU	MO	TU	WE	TH	FR	SA	SU	MO	TU	WE	TH	FR	SA	
1	2	3	4	5	6	7		1	2	3	4	5	6	
8	9	10	11	12	13	14	7	8	9	10	11	12	13	
15	16	17	18	19	20	21	14	15	16	17	18	19	20	
22	23	24	25	26	27	28	21	22	23	24	25	26	27	
29	30	31					28	29	30					
6 - End of 1st Nine Weeks (41 Days) 9 - Instructional Planning/ Professional Development (No Students) 13 - Grades Sent Home														
NOVEMBER 2023							MAY 2024							22-24 - HS Graduations 23 - End of 4th Nine Weeks (48 Days) 23 - Early Dismissal 1:00 p.m./ Grades Sent Home 24 - Teacher Work Day 27 - Memorial Day Holiday (Schools and Offices Closed) 93 Days Second Semester
SU	MO	TU	WE	TH	FR	SA	SU	MO	TU	WE	TH	FR	SA	
			1	2	3	4				1	2	3	4	
5	6	7	8	9	10	11	5	6	7	8	9	10	11	
12	13	14	15	16	17	18	12	13	14	15	16	17	18	
19	20	21	22	23	24	25	19	20	21	22	23	24	25	
26	27	28	29	30			26	27	28	29	30	31		
10 - Veterans Day (Schools and Offices Closed) 20-24 - Thanksgiving Holidays (Schools and Offices Closed)														
DECEMBER 2023							JUNE 2024							19 - Juneteenth Holiday Schools and Offices Closed 176 - Student Days 187 - Teacher Days
SU	MO	TU	WE	TH	FR	SA	SU	MO	TU	WE	TH	FR	SA	
					1	2							1	
3	4	5	6	7	8	9	2	3	4	5	6	7	8	
10	11	12	13	14	15	16	9	10	11	12	13	14	15	
17	18	19	20	21	22	23	16	17	18	19	20	21	22	
24 31	25	26	27	28	29	30	23 30	24	25	26	27	28	29	
14 - End of 2nd Nine Weeks (42 Days) 14 - Early Dismissal 1:00 p.m. 15 - Teacher Workday (No Students) 18-29 - Christmas Holidays (Schools and Offices Closed) 83 Days First Semester														

CTE Textbook Committee for 2022-23

- Five CTE programs are eligible for new textbook adoption this year:
Welding, Plumbing, Drafting and Design, Construction, and Automotive;

- Three SCS teachers have been engaged in evaluating available resources:
Toni Motley, Blake Ray, and Lynn Miller;

- In accordance with state textbook law, each of these teachers has
submitted a textbook Oath of Office relative to their work on this process;

- It is the superintendent's recommendation that the board empower this
group to move forward with the work of choosing appropriate resources in
the coming months.

**STATE OF ALABAMA
DEPARTMENT OF EDUCATION
LEA Financial System
Combined Balance Sheet -- All Fund Types and Account Groups
For Fiscal Year 2023, Fiscal Period 04**

Exhibit F-I-A

059 - Shelby County Schools

Description	GOVERNMENTAL			Capital Projects	PROPRIETARY	FIDUCIARY	ACCOUNT GROUPS F/A L/T Dept
	General	Special Revenue	Debt Service		Enterp/ Internal	Trust Agency	
Assets and Other Debits:							
Assets:							
Cash	\$88,926,091.04	\$12,422,210.07	\$17,561,194.10	\$11,457,528.73	\$0.00	\$3,048,316.51	\$0.00
Investments	\$10,726.77	\$183,638.59	\$0.00	\$0.00	\$0.00	\$5,284.93	\$0.00
Receivables	\$151,056.54	\$500,077.61	\$0.00	\$0.00	\$0.00	\$0.00	\$0.00
Interfund Receivables	\$207,142.00	\$0.00	\$0.00	\$0.00	\$0.00	\$0.00	\$0.00
Inventories	\$102,634.11	\$0.00	\$0.00	\$0.00	\$0.00	\$0.00	\$0.00
Other Assets							
Fixed Assets	\$0.00	\$0.00	\$0.00	\$0.00	\$0.00	\$0.00	\$472,434,259.95
Construction In Progress	\$0.00	\$0.00	\$0.00	\$0.00	\$0.00	\$0.00	\$28,426,160.92
Other Debits:							
Amounts Available	\$0.00	\$0.00	\$0.00	\$0.00	\$0.00	\$0.00	\$2,201,778.61
Amounts to be Provided	\$0.00	\$0.00	\$0.00	\$0.00	\$0.00	\$0.00	\$146,990,592.95
Other Debits							
Total Assets and Other Debits:	\$89,397,650.46	\$13,105,926.27	\$17,561,194.10	\$11,457,528.73	\$0.00	\$3,053,601.44	\$650,052,792.43
Liabilities and Fund Equity:							
Liabilities:							
Claims Payable	\$225,936.86	\$48,584.59	\$0.00	\$25,733.75	\$0.00	(\$1,934.30)	\$0.00
Interfund Payable	\$0.00	\$207,142.00	\$0.00	\$0.00	\$0.00	\$0.00	\$0.00
Other Liabilities	\$26,050.70	\$0.00	\$0.00	\$0.00	\$0.00	\$0.00	\$0.00
Long-Term Liabilities	\$0.00	\$0.00	\$0.00	\$0.00	\$0.00	\$0.00	\$149,192,371.56
Total Liabilities:	\$251,987.56	\$255,726.59	\$0.00	\$25,733.75	\$0.00	(\$1,934.30)	\$149,192,371.56
Fund Equity:							
Investments in General Fixed Assets	\$0.00	\$0.00	\$0.00	\$0.00	\$0.00	\$0.00	\$500,860,420.87
Contributed Capital							
Reserved Fund Balance	\$6,737,239.07	\$4,743,676.02	\$0.00	\$28,655,499.87	\$0.00	\$620,579.91	\$0.00
Unreserved Fund balance	\$82,408,423.83	\$8,106,523.66	\$17,561,194.10	(\$17,223,704.89)	\$0.00	\$2,434,955.83	\$0.00
Total Fund Equity:	\$89,145,662.90	\$12,850,199.68	\$17,561,194.10	\$11,431,794.98	\$0.00	\$3,055,535.74	\$500,860,420.87
Total Liabilities and Fund Equity:	\$89,397,650.46	\$13,105,926.27	\$17,561,194.10	\$11,457,528.73	\$0.00	\$3,053,601.44	\$650,052,792.43

Information in this report has been reconciled to the corresponding bank statements.

STATE OF ALABAMA
DEPARTMENT OF EDUCATION
LEA Financial System
Combined Statement of Revenues, Expenditures, and Changes in Fund Balances
All Governmental Fund Types and Expendable Trust Funds
For Fiscal Year 2023, Fiscal Period 04

059 - Shelby County Schools

	GOVERNMENTAL			FIDUCIARY		
	General	Special Revenue	Debt Service	Capital Projects	Expendable Trust	Total
Revenues						
State Sources	\$46,684,633.50	\$0.00	\$496,729.19	\$6,230,082.48	\$0.00	\$53,411,445.17
Federal Sources	\$17,090.39	\$3,087,420.36	\$0.00	\$0.00	\$0.00	\$3,104,510.75
Local Sources	\$60,454,456.78	\$4,504,057.82	\$13,038,700.12	\$10,296.13	\$1,424,640.53	\$79,432,151.38
Other Sources	\$153,106.33	\$174,446.07	\$0.00	\$0.00	\$0.00	\$327,552.40
Total Revenues:	\$107,309,287.00	\$7,765,924.25	\$13,535,429.31	\$6,240,378.61	\$1,424,640.53	\$136,275,659.70
Expenditures						
Instructional Services	\$42,154,208.54	\$4,423,001.35	\$0.00	\$0.00	\$307,211.46	\$46,884,421.35
Instructional Support Services	\$12,065,456.18	\$1,217,048.07	\$0.00	\$0.00	\$159,438.47	\$13,441,942.72
Operation & Maintenance Services	\$8,059,759.46	\$315,977.47	\$0.00	\$338,163.48	\$51,320.90	\$8,765,221.31
Auxiliary Services	\$6,570,692.91	\$6,057,953.97	\$0.00	\$0.00	\$12,880.58	\$12,641,527.46
General Administrative Services	\$1,727,644.04	\$125,507.34	\$0.00	\$0.00	\$0.00	\$1,853,151.38
Capital Outlay	\$344,798.23	\$211,371.13	\$0.00	\$9,926,077.66	\$0.00	\$10,482,247.02
Debt Service	\$0.00	\$0.00	\$347,914.33	\$0.00	\$461.14	\$348,375.47
Other Expenditures	\$1,282,244.65	\$362,746.63	\$0.00	\$0.00	\$351,636.64	\$1,996,627.92
Total Expenditures:	\$72,204,804.01	\$12,713,605.96	\$347,914.33	\$10,264,241.14	\$882,949.19	\$96,413,514.63
Other Fund Sources (Uses)						
Other Fund Sources:	\$1,234,939.49	\$3,202,249.33	\$0.00	\$218,511.48	\$53,081.13	\$4,708,781.43
Other Fund Uses:	\$3,312,037.77	\$487,671.13	\$0.00	\$0.00	\$311,253.04	\$4,110,961.94
Total Other Fund Sources (Uses):	(\$2,077,098.28)	\$2,714,578.20	\$0.00	\$218,511.48	(\$258,171.91)	\$597,819.49
Excess Revenues and Other Sources Over (Under) Expenditures and Other Fund Uses:	\$33,027,384.71	(\$2,233,103.51)	\$13,187,514.98	(\$3,805,351.05)	\$283,519.43	\$40,459,964.56
Beginning Fund Balance - October 1:	\$56,118,278.19	\$15,083,303.19	\$4,373,679.12	\$15,237,146.03	\$2,772,016.31	\$93,584,422.84
Ending Fund Balance:	\$89,145,662.90	\$12,850,199.68	\$17,561,194.10	\$11,431,794.98	\$3,055,535.74	\$134,044,387.40

Information in this report has been reconciled to the corresponding bank statements.

**STATE OF ALABAMA
DEPARTMENT OF EDUCATION
LEA Financial System
Combined Statement of Revenues, Expenditures, and Changes in Fund Balances
All Governmental Fund Types and Expendable Trust Funds
Budget and Actual
For Fiscal Year 2023, Fiscal Period 04**

059 - Shelby County Schools

Description	GENERAL			SPECIAL REVENUE		
	Budget	Actual	VARIANCE Favorable (Unfavorable)	Budget	Actual	VARIANCE Favorable (Unfavorable)
Revenues						
State Sources	\$143,357,951.97	\$46,684,633.50	(\$96,673,318.47)	\$0.00	\$0.00	\$0.00
Federal Sources	\$86,598.50	\$17,090.39	(\$69,508.11)	\$27,339,355.77	\$3,087,420.36	(\$24,251,935.41)
Local Sources	\$79,478,055.53	\$60,454,456.78	(\$19,023,598.75)	\$11,565,011.05	\$4,504,057.82	(\$7,060,953.23)
Other Sources	\$330,635.00	\$153,106.33	(\$177,528.67)	\$300,599.99	\$174,446.07	(\$126,153.92)
Total Revenues:	\$223,253,241.00	\$107,309,287.00	(\$115,943,954.00)	\$39,204,966.81	\$7,765,924.25	(\$31,439,042.56)
Expenditures						
Instructional Services	\$128,380,445.46	\$42,154,208.54	\$86,226,236.92	\$19,676,057.35	\$4,423,001.35	\$15,253,056.00
Instructional Support Services	\$36,937,967.12	\$12,065,456.18	\$24,872,510.94	\$5,616,983.74	\$1,217,048.07	\$4,399,935.67
Operation & Maintenance Services	\$23,351,931.84	\$8,059,759.46	\$15,292,172.38	\$2,163,235.00	\$315,977.47	\$1,847,257.53
Auxiliary Services	\$17,515,735.91	\$6,570,692.91	\$10,945,043.00	\$15,409,393.67	\$6,057,953.97	\$9,351,439.70
General Administrative Services	\$5,286,320.12	\$1,727,644.04	\$3,558,676.08	\$448,279.21	\$125,507.34	\$322,771.87
Capital Outlay	\$1,966,000.00	\$344,798.23	\$1,621,201.77	\$50,000.00	\$211,371.13	(\$161,371.13)
Debt Service	\$0.00	\$0.00	\$0.00	\$2,085.00	\$0.00	\$2,085.00
Other Expenditures	\$3,816,248.78	\$1,282,244.65	\$2,534,004.13	\$1,404,489.81	\$362,746.63	\$1,041,743.18
Total Expenditures:	\$217,254,649.23	\$72,204,804.01	\$145,049,845.22	\$44,770,523.78	\$12,713,605.96	\$32,056,917.82
Other Financing Sources (Uses)						
Other Financing Sources:	\$3,140,849.52	\$1,234,939.49	(\$1,905,910.03)	\$7,780,731.11	\$3,202,249.33	(\$4,578,481.78)
Other Financing Uses:	\$7,197,152.11	\$3,312,037.77	\$3,885,114.34	\$1,873,793.99	\$487,671.13	\$1,386,122.86
Total Other Financing Sources (Uses):	(\$4,056,302.59)	(\$2,077,098.28)	\$1,979,204.31	\$5,906,937.12	\$2,714,578.20	(\$3,192,358.92)
Excess Revenues and Other Sources Over (Under) Expenditures and Other Uses:	\$1,942,289.18	\$33,027,384.71	\$31,085,095.53	\$341,380.15	(\$2,233,103.51)	(\$2,574,483.66)
Beginning Fund Balance - Oct. 1:	\$42,497,443.07	\$56,118,278.19	\$13,620,835.12	\$10,532,990.81	\$15,083,303.19	\$4,550,312.38
Ending Fund Balance:	\$44,439,732.25	\$89,145,662.90	\$44,705,930.65	\$10,874,370.96	\$12,850,199.68	\$1,975,828.72

Information in this report has been reconciled to the corresponding bank statements.

STATE OF ALABAMA
DEPARTMENT OF EDUCATION
LEA Financial System
Combined Statement of Revenues, Expenditures, and Changes in Fund Balances
All Governmental Fund Types and Expendable Trust Funds
Budget and Actual
For Fiscal Year 2023, Fiscal Period 04

059 - Shelby County Schools

Description	DEBT SERVICE			VARIANCE Favorable (Unfavorable)	CAPITAL PROJECTS		VARIANCE Favorable (Unfavorable)
	Budget	Actual			Budget	Actual	
Revenues							
State Sources	\$2,816,264.68	\$496,729.19	(\$2,319,535.49)	\$25,858,891.32	\$6,230,082.48	(\$19,628,808.84)	
Federal Sources	\$0.00	\$0.00	\$0.00	\$0.00	\$0.00	\$0.00	\$0.00
Local Sources	\$14,039,429.59	\$13,038,700.12	(\$1,000,729.47)	\$970,882.00	\$10,296.13	(\$960,585.87)	
Other Sources	\$0.00	\$0.00	\$0.00	\$0.00	\$0.00	\$0.00	\$0.00
Total Revenues:	\$16,855,694.27	\$13,535,429.31	(\$3,320,264.96)	\$26,829,773.32	\$6,240,378.61	(\$20,589,394.71)	
Expenditures							
Instructional Services	\$0.00	\$0.00	\$0.00	\$0.00	\$0.00	\$0.00	\$0.00
Instructional Support Services	\$0.00	\$0.00	\$0.00	\$0.00	\$0.00	\$0.00	\$0.00
Operation & Maintenance Services	\$0.00	\$0.00	\$0.00	\$1,475,105.20	\$338,163.48	\$1,136,941.72	
Auxiliary Services	\$0.00	\$0.00	\$0.00	\$795,592.50	\$0.00	\$795,592.50	
General Administrative Services	\$0.00	\$0.00	\$0.00	\$0.00	\$0.00	\$0.00	\$0.00
Capital Outlay	\$0.00	\$0.00	\$0.00	\$39,304,393.00	\$9,926,077.66	\$29,378,315.34	
Debt Service	\$16,493,884.73	\$347,914.33	\$16,145,970.40	\$0.00	\$0.00	\$0.00	\$0.00
Other Expenditures	\$0.00	\$0.00	\$0.00	\$0.00	\$0.00	\$0.00	\$0.00
Total Expenditures:	\$16,493,884.73	\$347,914.33	\$16,145,970.40	\$41,575,090.70	\$10,264,241.14	\$31,310,849.56	
Other Financing Sources (Uses)							
Other Financing Sources:	\$0.00	\$0.00	\$0.00	\$1,641,909.20	\$218,511.48	(\$1,423,397.72)	
Other Financing Uses:	\$0.00	\$0.00	\$0.00	\$0.00	\$0.00	\$0.00	\$0.00
Total Other Financing Sources (Uses):	\$0.00	\$0.00	\$0.00	\$1,641,909.20	\$218,511.48	(\$1,423,397.72)	
Excess Revenues and Other Sources Over (Under) Expenditures and Other Uses:	\$361,809.54	\$13,187,514.98	\$12,825,705.44	(\$13,103,408.18)	(\$3,805,351.05)	\$9,298,057.13	
Beginning Fund Balance - Oct. 1:	\$4,234,265.82	\$4,373,679.12	\$139,413.30	\$13,384,129.66	\$15,237,146.03	\$1,853,016.37	
Ending Fund Balance:	\$4,596,075.36	\$17,561,194.10	\$12,965,118.74	\$280,721.48	\$11,431,794.98	\$11,151,073.50	

Information in this report has been reconciled to the corresponding bank statements.

**STATE OF ALABAMA
DEPARTMENT OF EDUCATION
LEA Financial System
Combined Statement of Revenues, Expenditures, and Changes in Fund Balances
All Governmental Fund Types and Expendable Trust Funds
Budget and Actual
For Fiscal Year 2023, Fiscal Period 04**

059 - Shelby County Schools

Description	EXPENDABLE TRUST		VARIANCE Favorable (Unfavorable)	TOTAL GOVERNMENT AND FUND TYPES AND EXPENDABLE TRUST FUNDS		VARIANCE Favorable (Unfavorable)
	Budget	Actual		Budget	Actual	
Revenues						
State Sources	\$0.00	\$0.00	\$0.00	\$172,033,107.97	\$53,411,445.17	(\$118,621,662.80)
Federal Sources	\$0.00	\$0.00	\$0.00	\$27,425,954.27	\$3,104,510.75	(\$24,321,443.52)
Local Sources	\$3,704,786.00	\$1,424,640.53	(\$2,280,145.47)	\$109,758,164.17	\$79,432,151.38	(\$30,326,012.79)
Other Sources	\$0.00	\$0.00	\$0.00	\$631,234.99	\$327,552.40	(\$303,682.59)
Total Revenues:	\$3,704,786.00	\$1,424,640.53	(\$2,280,145.47)	\$309,848,461.40	\$136,275,659.70	(\$173,572,801.70)
Expenditures						
Instructional Services	\$995,141.00	\$307,211.46	\$687,929.54	\$149,051,643.81	\$46,884,421.35	\$102,167,222.46
Instructional Support Services	\$742,165.00	\$159,438.47	\$582,726.53	\$43,297,115.86	\$13,441,942.72	\$29,855,173.14
Operation & Maintenance Services	\$138,590.00	\$51,320.90	\$87,269.10	\$27,128,862.04	\$8,765,221.31	\$18,363,640.73
Auxiliary Services	\$28,714.00	\$12,880.58	\$15,833.42	\$33,749,436.08	\$12,641,527.46	\$21,107,908.62
General Administrative Services	\$0.00	\$0.00	\$0.00	\$5,734,599.33	\$1,853,151.38	\$3,881,447.95
Capital Outlay	\$30,000.00	\$0.00	\$30,000.00	\$41,350,393.00	\$10,482,247.02	\$30,868,145.98
Debt Service	\$2,000.00	\$461.14	\$1,538.86	\$16,497,969.73	\$348,375.47	\$16,149,594.26
Other Expenditures	\$920,895.00	\$351,636.64	\$569,258.36	\$6,141,633.59	\$1,996,627.92	\$4,145,005.67
Total Expenditures:	\$2,857,505.00	\$882,949.19	\$1,974,555.81	\$322,951,653.44	\$96,413,514.63	\$226,538,138.81
Other Financing Sources (Uses)						
Other Financing Sources:	\$75,006.00	\$53,081.13	(\$21,924.87)	\$12,638,495.83	\$4,708,781.43	(\$7,929,714.40)
Other Financing Uses:	\$683,949.00	\$311,253.04	\$372,695.96	\$9,754,895.10	\$4,110,961.94	\$5,643,933.16
Total Other Financing Sources (Uses):	(\$608,943.00)	(\$258,171.91)	\$350,771.09	\$2,883,600.73	\$597,819.49	(\$2,285,781.24)
Excess Revenues and Other Sources Over (Under) Expenditures and Other Uses:	\$238,338.00	\$283,519.43	\$45,181.43	(\$10,219,591.31)	\$40,459,964.56	\$50,679,555.87
Beginning Fund Balance - Oct. 1:	\$2,508,761.00	\$2,772,016.31	\$263,255.31	\$73,157,590.36	\$93,584,422.84	\$20,426,832.48
Ending Fund Balance:	\$2,747,099.00	\$3,055,535.74	\$308,436.74	\$62,937,999.05	\$134,044,387.40	\$71,106,388.35

Information in this report has been reconciled to the corresponding bank statements.

Report by

- Bank Code
- Account #

Account Number [REDACTED]

Statement Ending Date 01/31/2023

Fiscal Year: 2023 Period: 4

Print Report Print Journal Entries

Reconciliation Summary	Amounts
Statement Ending Balance	115,129,992.13
Outstanding Checks	1,272,184.09
Outstanding Other Reconciliable Items	0.00
Adjusted Statement Balance	113,857,808.04
Beginning Book Balance	95,538,372.87
Total Debits	57,829,359.85
Total Credits	39,509,924.68
Ending Book Balance	113,857,808.04
Statement And Book In Balance	0.00

Report Destination

- To Report Viewer
- To Grid
- To File
- To Printer

PR18 CSFO Setup

Bank Account Reconciled!

**SHELBY COUNTY BOARD OF EDUCATION
LOCAL TAX REVENUE COMPARISON FOR FY 2023**

	JANUARY		YEAR-TO-DATE		YTD COMPARISON	BUDGET
	2022	2023	2022	2023		
16 Mill CW Property	12,791,317	12,686,630	33,154,118	36,525,301	3,371,183	36,432,660
16 Mill CW Auto	101,939	144,012	1,349,284	1,542,213	192,930	4,800,000
TOTAL 16 MILL COUNTY-WIDE	12,893,256	12,830,642	34,503,402	38,067,515	3,564,112	41,232,660
14 Mill SD Property	10,605,914	10,781,448	26,211,774	29,041,984	2,830,210	28,658,746
14 Mill SD Auto	79,955	96,987	955,993	1,085,125	129,132	4,125,883
TOTAL 14 MILL DISTRICT	10,685,869	10,878,435	27,167,767	30,127,109	2,959,341	32,784,629
TOTAL 30 MILL AD VAL	23,579,125	23,709,077	61,671,169	68,194,623	6,523,454	74,017,289
ALCOHOL BEVERAGE TAX	43,376	41,877	66,312	61,846	(4,467)	245,060
SALES TAX	1,159,046	1,217,672	2,282,486	2,460,783	178,297	14,300,000
TOTAL LOCAL REVENUE	24,781,547	24,968,625	64,019,968	70,717,252	6,697,284	88,562,349

LOCAL REVENUE	ACTUAL YTD	ACTUAL YTD	% INCREASE (DECREASE)
	2022	2023	
Property Ad Valorem	59,365,892	65,567,285	10.45%
Car Tag Ad Valorem	2,305,277	2,627,339	13.97%
Sales Tax	2,282,486	2,460,783	7.81%
Alcohol Beverage Tax	66,312	61,846	-6.74%
Total Local	64,019,968	70,717,252	10.46%

**APPROVAL OF EXPENDITURES FOR THE MONTH OF
January 2023**

BEGINNING FUND BALANCE
 BEGINNING FUND BALANCE CHANGE
 TOTAL INCOME
 TOTAL PAYABLES AND OTHER EXPENDITURES

	\$116,027,627.94
+ or (-)	\$ 5,659,801.31
	\$ 37,286,629.92

General
 Special
 Debt Service
 Capital Projects
 Non-expendable Trust
 Expendable Trust

Fund	
11	\$ 2,449,665.15
12	\$ 1,954,862.19
13	\$ 145,733.47
14	\$ 3,079,482.53
31	\$ -
32	\$ 367,777.55

TOTAL	\$ 7,997,520.89
--------------	------------------------

TOTAL GROSS WAGES/FRINGE PAID

General Gross
 Fringe Benefits
 Special Gross
 Fringe Benefits

Fund	
11	\$ 11,318,875.84
11	\$ 4,254,472.91
12	\$ 955,736.34
12	\$ 403,065.79

TOTAL	\$ 16,932,150.88
--------------	-------------------------

TOTAL EXPENDITURES

(-)

\$ 24,929,671.77

FUND BALANCES FORWARD

F-II-A + F-IV-A

\$134,044,387.40

ADJUSTMENT FOR ASSET/EQUITY/ LIABILITY ACCOUNTS

+ or (-)


\$ (629,046.95)

ENDING CASH BALANCE

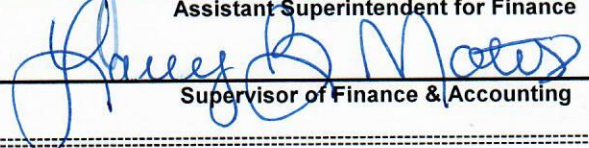
Page M-I-A

\$133,415,340.45

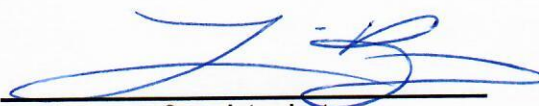
This will certify the above expenditures for the month of January 2023



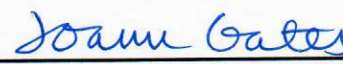
 Assistant Superintendent for Finance




 Supervisor of Finance & Accounting



 Superintendent



 Coordinator of Finance & Accounting



 Payroll Supervisor

Approved by the Shelby County Board of Education

 Board President

 Date

 Minute Book

Form54

Bus Driver Subs and Bus Aide Subs for Board Approval

Board Meeting Date : 2/16/2023

Bus Driver's - In Training

Aide's
Brothers, Lorane



TABULATION OF BIDS
Office Access Control Door for Montevallo
Middle School
Architect's Job No. 22-152
DCM#2022672

Bids Received:
 January 26, 2023, until 2:00 p.m.
 Lathan Associates Architects
 300 Chase Park South, Suite 200
 Hoover, AL 35244

Description	Surety Company	Base Bid
Williford Orman Construction Hoover, AL	Harco National Insurance Company	\$39,845.00

I Certify that the above Bids were received sealed and were publicly opened and read aloud at the time and place indicated and that this is a true and correct Tabulation of all Bids received for this Project.

Sworn and subscribed before me this 26th day of January 2023

By: Rick N. Lathan, AIA President
 (Typed Name of Architect)

Madine Marie Sullivan
 Notary Public, Alabama State at Large
 My Commission Expires August 29, 2026



[Handwritten Signature]
 (Signature)



PURCHASE AND SALE AGREEMENT

THIS PURCHASE AND SALE AGREEMENT ("Agreement") is effective as of **INSERT DATE**, by and between **Shelby County Board of Education ("Seller")**, and **Alabama Power Company**, an Alabama corporation (whether one or more, "**Purchaser**").

WITNESSETH:

WHEREAS, Seller is the owner of certain land in Shelby County, Alabama, as more particularly described herein; and

WHEREAS, Seller desires to sell and Purchaser desires to purchase such land.

NOW, THEREFORE, in consideration of One Dollar in hand paid, the mutual agreements contained herein, subject to the terms and conditions herein, the Seller hereby agrees to sell and the Purchaser agrees to purchase that certain real property described on **Exhibit A** hereto, together with all rights, privileges, easements (including access easements) and appurtenances thereunto belonging, if any, (all of the foregoing being hereinafter referred to as the "Property").

THIS AGREEMENT IS MADE UPON THE FOLLOWING TERMS AND CONDITIONS:

- 1. Property Inspection and Review Period.** Purchaser shall have from the Date of this Agreement until 5:00 pm on **5/15/2023** (the "**Review Period**") to inspect the Property, including without limitation, the environmental condition, appraisal findings, zoning and state of title. During the Review Period, Purchaser, and its agents, employees and contractors shall have the right of free access to and right to enter the Property to make surveys, borings, soil tests, inspections and such other tests, analyses and investigations of the Property as Purchaser deems desirable (collectively, "Inspections"). If at any time prior to the end of the Review Period, Purchaser determines that it is not satisfied with the Property, Purchaser may terminate this Agreement. Purchaser must notify Seller in writing, before the end of the Review Period, that Purchaser is not satisfied with the Property, and that it desires to terminate this Agreement. If Purchaser so notifies Seller within said time period that it is not satisfied with the Property, then this Agreement and Purchaser's obligation hereunder to purchase, and Seller's obligation to sell, the Property shall terminate, and in the event of such a termination, Seller agrees to refund to Purchaser all earnest money previously paid by Purchaser to Seller hereunder. Purchaser shall cause the Property to be promptly returned to its condition prior to such Inspections and shall protect, defend, indemnify and hold Seller harmless from and against any and all claims, demands, losses, damages, costs and expenses, including reasonable attorneys' and other legal fees and expenses resulting from damage to property or injuries to persons caused by Purchaser's Inspections. This obligation shall survive any termination or expiration of this Agreement.

2. **Purchase Price.** The Purchase Price shall be Twenty-Seven Thousand & No/100 Dollars (\$27,000.00) calculated at the rate of Two Hundred Fifty-Five Thousand and No/100 Dollars (\$255,000.00) per acre, based on an appraisal obtained by Purchaser. Such Purchase Price is payable upon the closing of the sale and conveyance of the Property.
4. **Closing Date.** Subject to the provisions hereof, including Section 6, the sale shall be closed on or before 5/31/2023 (the "Closing Date").
5. **Conveyance.** On the date of closing the Property shall be conveyed by Seller to Purchaser by statutory warranty deed. Seller's title to the Property at closing shall be subject to no easement or restriction not existing on the date hereof unless approved in writing by Purchaser or, provided Seller shall have given Purchaser prompt written notice thereof, unless resulting from the exercise or threat of exercise of the power of eminent domain. In addition, Seller's title shall be free and clear of all leases, liens and mortgages ("Encumbrances"), unless approved in writing by Purchaser. Seller shall also provide Purchaser at closing with (i) lien and other affidavits and agreements on standard title company forms sufficient to cause Purchaser's title company to delete its standard exception for mechanics' and materialmens' liens and to remove any exceptions relating to judgments or tax liens, and (ii) an affidavit that Seller is not a "foreign person" within the meaning of the Foreign Investors Real Property Tax Act of 1980, as amended ("FIRPTA").
6. **Risk of Loss; Changes to Property.** Seller agrees to assume the risk of all loss or damage to the Property occurring on or before the date on which title thereof is conveyed to Purchaser. If, prior to its conveyance, the Property in whole or in material part is damaged or destroyed by fire, act of God or other casualty event or is made subject to eminent domain, or the environmental condition thereof is materially and adversely changed, and the same is not due to the acts of Purchaser, its employees, agents or contractors, or the zoning classification for the Property is changed, then in any such event, Purchaser may terminate this Agreement by providing written notice to Seller, in which event all earnest money heretofore paid by Purchaser to Seller shall be returned to Purchaser, and Purchaser's obligation to purchase, and Seller's obligation to sell the Property shall terminate. In the event Purchaser does not so terminate this Agreement, Seller shall at closing assign its rights to, or deliver, as applicable, any insurance, condemnation or other proceeds payable to Seller. Seller agrees that from the date of this Agreement until the date on which the Property is conveyed to Purchaser, it will not commit any waste of the Property, or the cutting of any timber on the Property, or convey any rights in the Property.
7. **Taxes and Assessments.** Seller shall be responsible for payment, on or before closing, of all ad valorem taxes, assessments, and other charges then due on the Property; provided, that ad valorem taxes and any other assessments or charges for the tax year or other period during which the closing occurs which are not then delinquent shall be prorated between Purchaser and Seller as of the Closing Date.

8. **Representations of Seller.** Seller represents and warrants to Purchaser as follows:

8.1 To Seller's knowledge, the Property is not in violation of any environmental or other regulatory requirement or other law and there are no pending claims or threats of claims by private parties or governmental authorities relating to violations of environmental or other laws or regulatory requirements with respect to the Property.

9. **Notices.** Any and all notices permitted or required under this Agreement shall be in writing and shall be served or mailed to the following addresses until such time as either party may notify the other in writing of a change in its address:

9.1 **To Seller:**

Shelby County Board of Education
410 E College Street
Columbiana, AL 35051
Attention: Superintendent Dr. Lewis Brooks
(205) 682-7000 Fax No. (205) 682-7150

9.2 **To Purchaser:**

Alabama Power Company
600 North 18th Street
Birmingham, Alabama 35203
Attention: Mike Bunn
(205) 257-5180
jmbunn@southernco.com

A notice shall be considered as served or received (i) at the time it is deposited in the United States mail, postage prepaid, return receipt requested, or (ii) upon actual receipt.

10. **Miscellaneous.** This Agreement shall be binding upon and shall insure to the benefit of the undersigned parties and their respective heirs, personal representatives, executors, successors and permitted assigns. In the event of any litigation or binding arbitration in connection with the rights or obligations of the parties hereunder, the non-prevailing party shall reimburse the prevailing party for its reasonable out of pocket attorneys' fees and other legal expenses. In no event shall either party be entitled to claim or receive an award of consequential, special, punitive or exemplary damages. Time is of the essence with respect to the performance of all of the covenants and other terms and conditions of this Agreement. In the event the time for performance of any obligation hereunder shall fall or expire on a day other than a business day, the time for performance of such obligation shall be extended to the next succeeding business day. For purposes hereof, a business day shall be any day other than Saturdays, Sundays and days on which banks in Birmingham, Alabama are required or authorized to be closed. This Agreement may be executed in multiple counterparts, each of which shall be deemed an original, but which, when taken together, shall constitute but one Agreement. This Agreement, including

any exhibits, riders or addenda attached hereto and described herein, states the entire agreement between the parties and merges in this Agreement all statements, representations, warranties and covenants heretofore made, and any others not incorporated herein are void and of no force and effect.

10. **Exhibits.** The following exhibits, riders and addenda are attached hereto and made a part of this Agreement for all purposes:

Exhibit A Description of Property

Closing Costs. Seller agrees, at Closing, to pay the costs of the following:

- (i) recording of any lien release or other document relating to curing any unpermitted exception or encumbrance on the Seller's title to the Property;
- (ii) Seller's attorneys' fees, if any incurred.

Purchaser agrees, at Closing, to pay the costs of the following:

- (i) recording the deed;
- (ii) any escrow and/or closing fees charged by any title company or agent there of selected by Purchaser to handle the Closing and all title insurance premiums for policies ordered by the Purchaser.
- (iii) Purchaser's attorneys' fees; and
- (iv) the charges of any surveyors, engineers or other consultants retained by Purchaser.

IN WITNESS WHEREOF, the undersigned parties have caused this Agreement to be executed on the day and year first above written.

SELLER:

Shelby County Board of Education

By: Dr. Lewis Brooks
Its: Superintendent, Shelby County Bd. of Education

PURCHASER:

Alabama Power Company

By: Mike Bunn
Its: Land Supervisor

STATE OF Alabama

COUNTY OF _____

I, _____, a Notary Public in and for said County in said State, hereby certify that **Dr. Lewis Brooks**, whose name as **Superintendent of the Shelby County Board of Education**, is signed to the foregoing instrument, and who is known to me, acknowledged before me on this day that, being informed of the contents of the instrument, he, as such Superintendent and with full authority, executed the same voluntarily for and as the act of said corporation.

Given under my hand this the _____ day of _____, 20_____.

Notary Public

My commission expires: _____

STATE OF ALABAMA

COUNTY OF _____

I, _____, a Notary Public in and for said County in said State, hereby certify that **Mike Bunn** whose name as **Land Supervisor of Alabama Power Company**, an Alabama corporation, is signed to the foregoing instrument, and who is known to me, acknowledged before me on this day that, being informed of the contents of the instrument, he, as such Land Supervisor and with full authority, executed the same voluntarily for and as the act of said corporation.

Given under my hand this the _____ day of _____, _____.

Notary Public

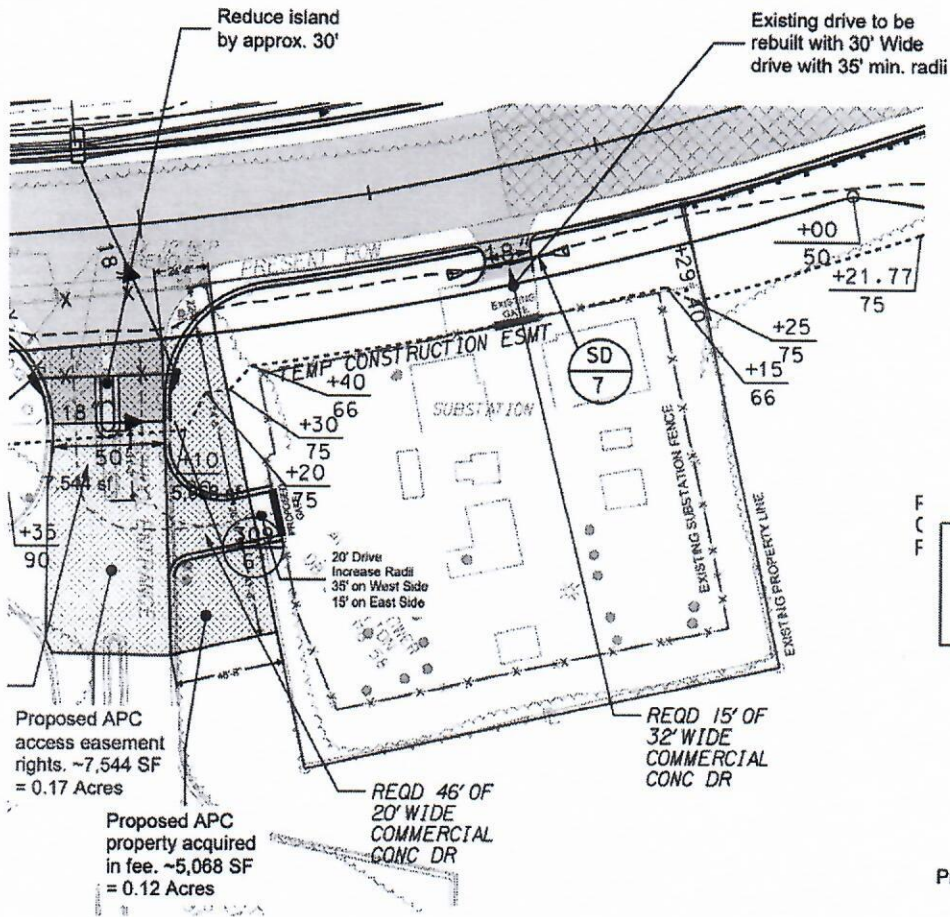
My commission expires: _____

EXHIBIT A

Description of the Property

Southeast $\frac{1}{4}$ of Northwest $\frac{1}{4}$ of Section 01, Township 19S, Range 02W, identified as Parcel # 101010001003.001

Legal Description to be replaced with boundary Survey prior to closing. Fee area to be acquired indicated by red hatched area between Inverness Elementary entrance road and Alabama Power substation parcel.



PRELIMINARY
Not Intended for Construction
Use. Intended for Discussion
Purposes Only.

INVERNESS DS
ALDOT ROW Expansion and
Proposed Substation Access Drive
11/29/2022





Lewis Brooks,
Ed.D.
Superintendent

Board Members

David Bobo,
President

Peg Hill,
Vice President

Jimmy Bice

Brian Boatman

Amber Polk

410 East College
Street
Post Office Box 1910
Columbiana, AL
35051

(205) 682-7000
Phone
(205) 682-7005
Fax

www.shelbyed.k12.al.us

January 18, 2023

Metro Fence
Attn: Jason Fisher
805 Pinewood Avenue
Bessemer, AL 35023

Dear Mr. Fisher:

On March 8, 2023, the bid contract with your company, Bid #22-12, "**Fencing**" will expire. Under the terms of the original agreement, the contract may be renewed for four (4) additional one (1) year periods, by mutual consent of both parties. All prices and terms must remain the same.

At this time, it is the desire of the Shelby County Board of Education to renew the contract for an additional one (1) year, which will extend the contract through March 8, 2024, for the first renewal period. Please review the pricing to ensure you can honor the awarded prices for another year. If you are in agreement, please sign the appropriate statement below. If you do not agree to the extension, sign that statement accordingly.

Return this letter to the attention of Tracy Whitfield within ten working days from the above date. Should we not hear from you within the time limit, our contract with your company will expire on March 8, 2023.

Sincerely,

John Gwin
Assistant Superintendent of Finance

I **agree** to the renewal/extension of this contract for an additional one (1) year for **Bid #22-12, "Fencing"**. I understand that all prices and terms will remain the same.

Signature

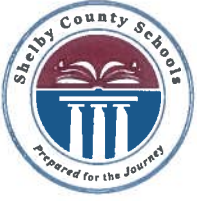
2-1-23

Date

I **do not** wish to extend this bid contract.

Signature

Date



Lewis Brooks,
Ed.D.
Superintendent

January 18, 2023

Interior Distributors of Alabama, Inc
Attn: Mr. Herschel Yerby
1901 29th Avenue North
Birmingham, AL 35207

Dear Mr. Yerby:

On February 17, 2023, the bid contract with your company, Bid #22-08, "**Ceiling Tile - Product**" will expire. Under the terms of the original agreement, the contract may be renewed for four (4) additional one (1) year periods, by mutual consent of both parties. All prices and terms must remain the same.

Board Members

David Bobo,
President

Peg Hill,
Vice President

Jimmy Bice

Brian Boatman

Amber Polk

At this time, it is the desire of the Shelby County Board of Education to renew the contract for an additional one (1) year, which will extend the contract **through February 17, 2024**, for the first renewal period. Please review the pricing to ensure you can honor the awarded prices for another year. If you are in agreement, please sign the appropriate statement below. If you do not agree to the extension, sign that statement accordingly.

Return this letter to the attention of Tracy Whitfield within ten working days from the above date. Should we not hear from you within the time limit, our contract with your company will expire on February 17, 2023.

Sincerely,

John Gwin
Assistant Superintendent of Finance

I **agree** to the renewal/extension of this contract for an additional one (1) year for **Bid #22-08, "Ceiling Tile - Product"**. I understand that all prices and terms will remain the same.

410 East College Street
Post Office Box 1910
Columbiana, AL 35051

(205) 682-7000
Phone
(205) 682-7005
Fax

 1-24-23
Signature Date

I **do not** wish to extend this bid contract.

Signature Date