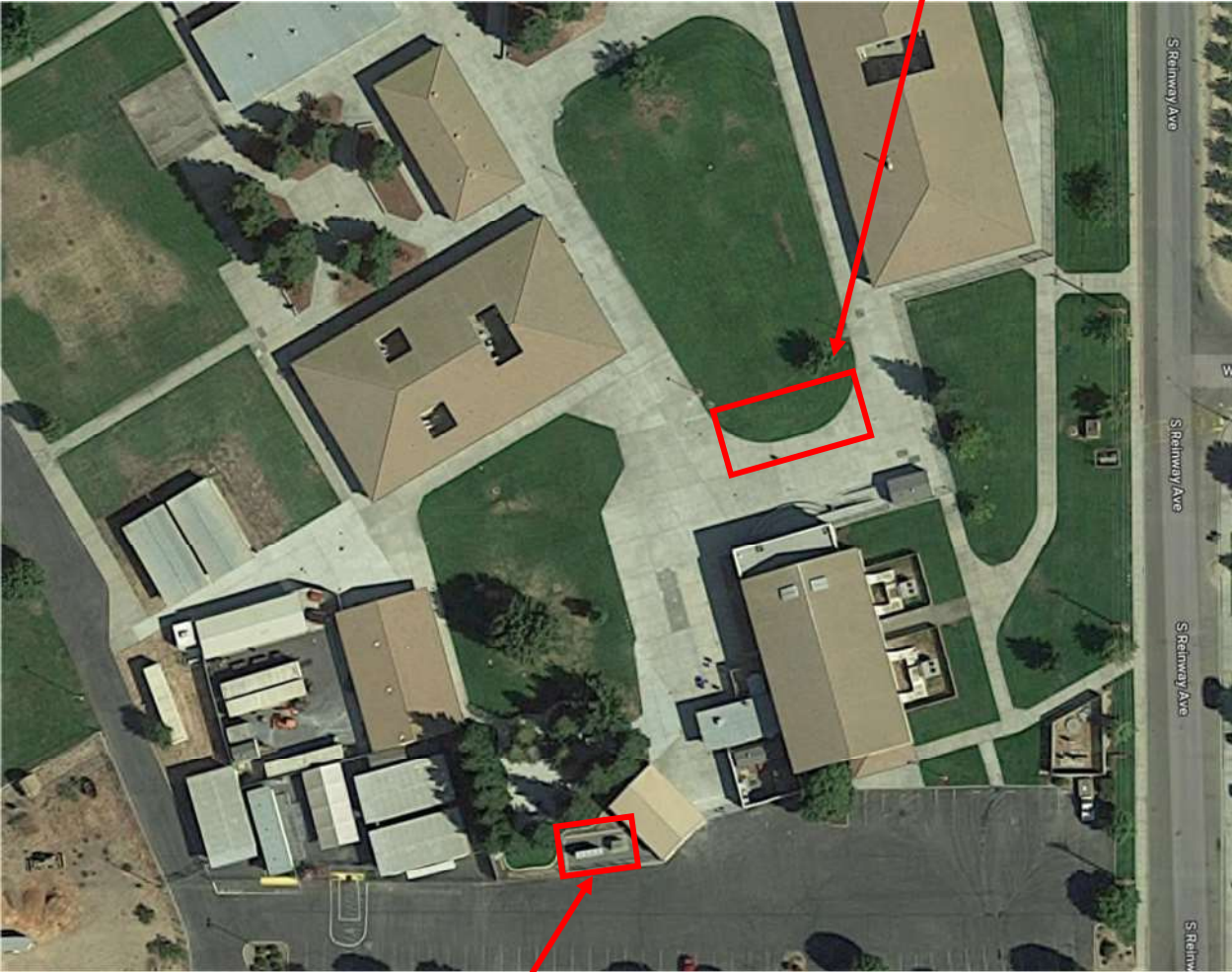


Attachment 4 –Images for Site
Waterford High School

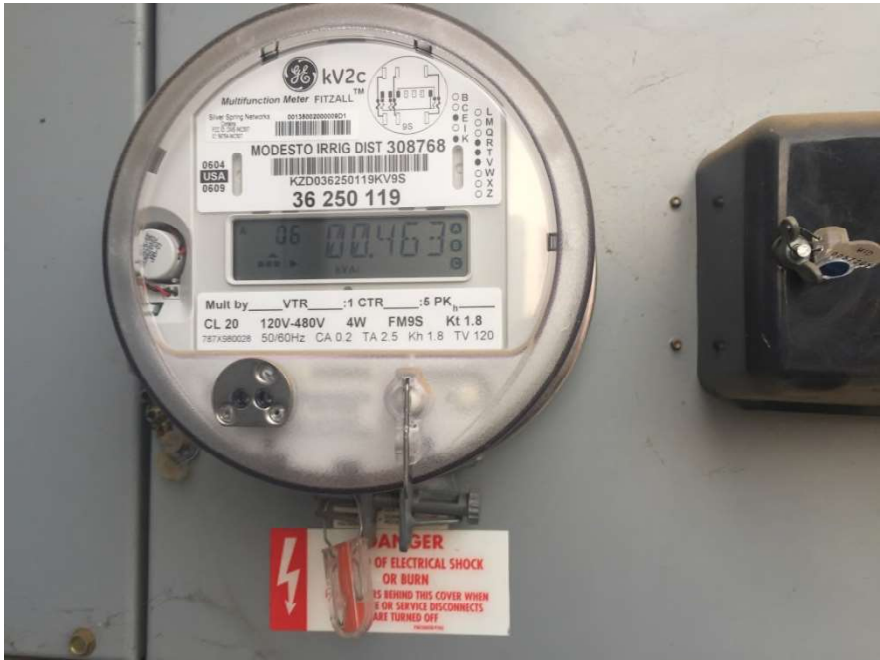
Waterford High School shade structure location. Structure spans southern edge of grass area, approximately half on existing grass and half on existing concrete, and is parallel to amphitheater stage front. Lawn slopes upward, so grading and possibly tree relocation may be required.



Electrical switchgear/interconnect location



Picture 1: Gated meter switchboard yard, south of campus



Picture 2: Meter for entire campus



Picture 3: Main AC disconnect



Picture 4: Circuit breakers to individual buildings