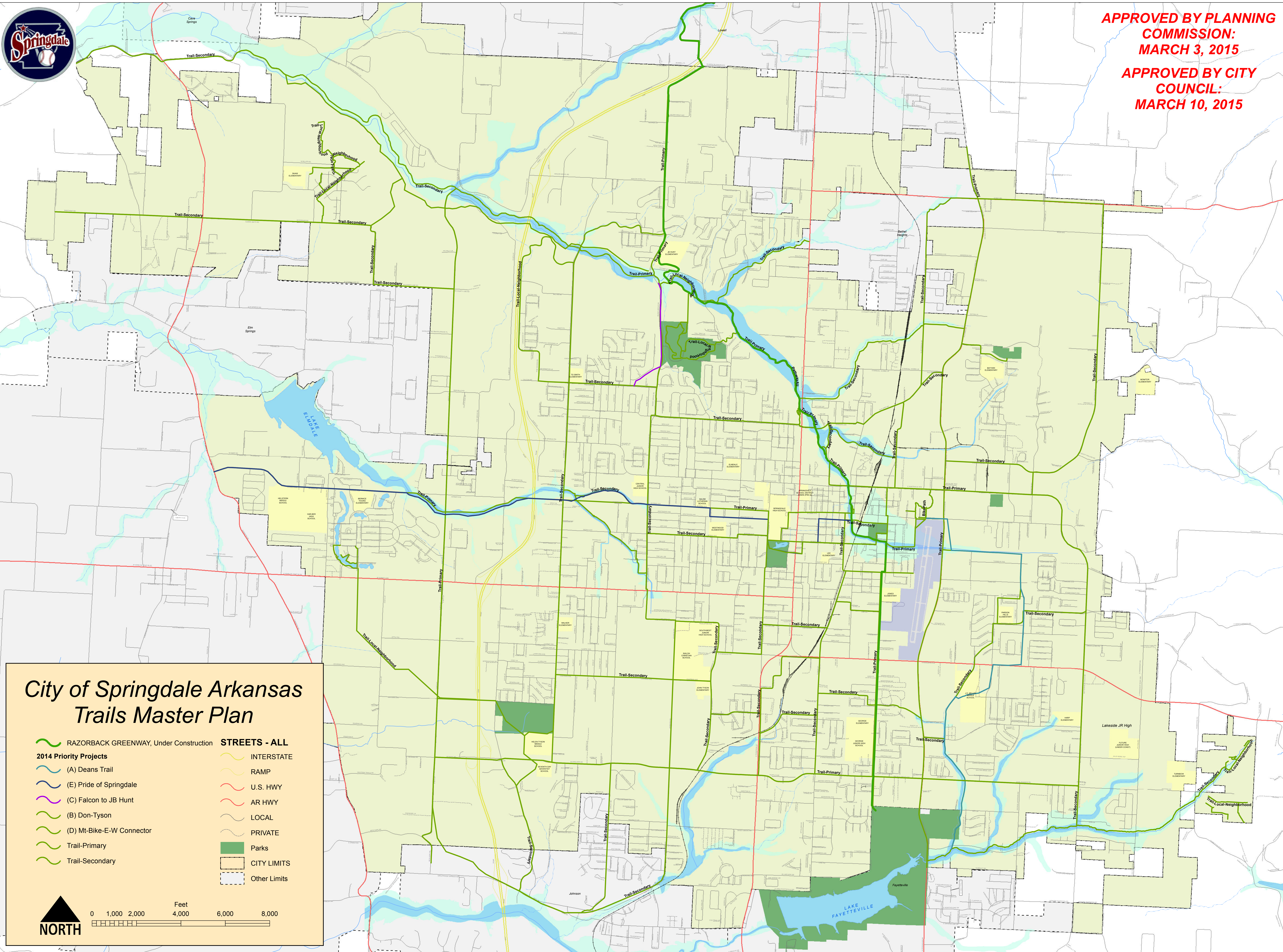




**APPROVED BY PLANNING  
COMMISSION:  
MARCH 3, 2015**

**APPROVED BY CITY  
COUNCIL:  
MARCH 10, 2015**



### City of Springdale Arkansas Trails Master Plan

RAZORBACK GREENWAY, Under Construction	<b>STREETS - ALL</b>
<b>2014 Priority Projects</b>	INTERSTATE
(A) Deans Trail	RAMP
(E) Pride of Springdale	U.S. HWY
(C) Falcon to JB Hunt	AR HWY
(B) Don-Tyson	LOCAL
(D) Mt-Bike-E-W Connector	PRIVATE
Trail-Primary	Parks
Trail-Secondary	CITY LIMITS
	Other Limits

**Feet**

0 1,000 2,000 4,000 6,000 8,000

**NORTH**