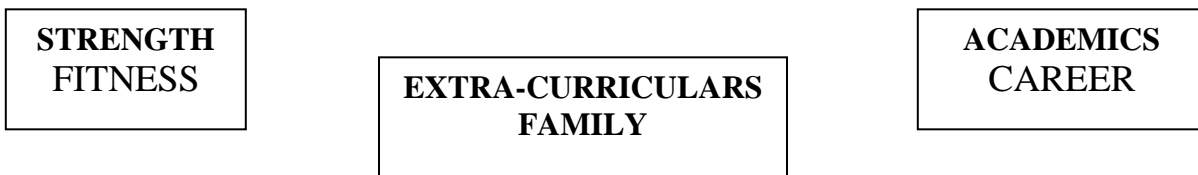
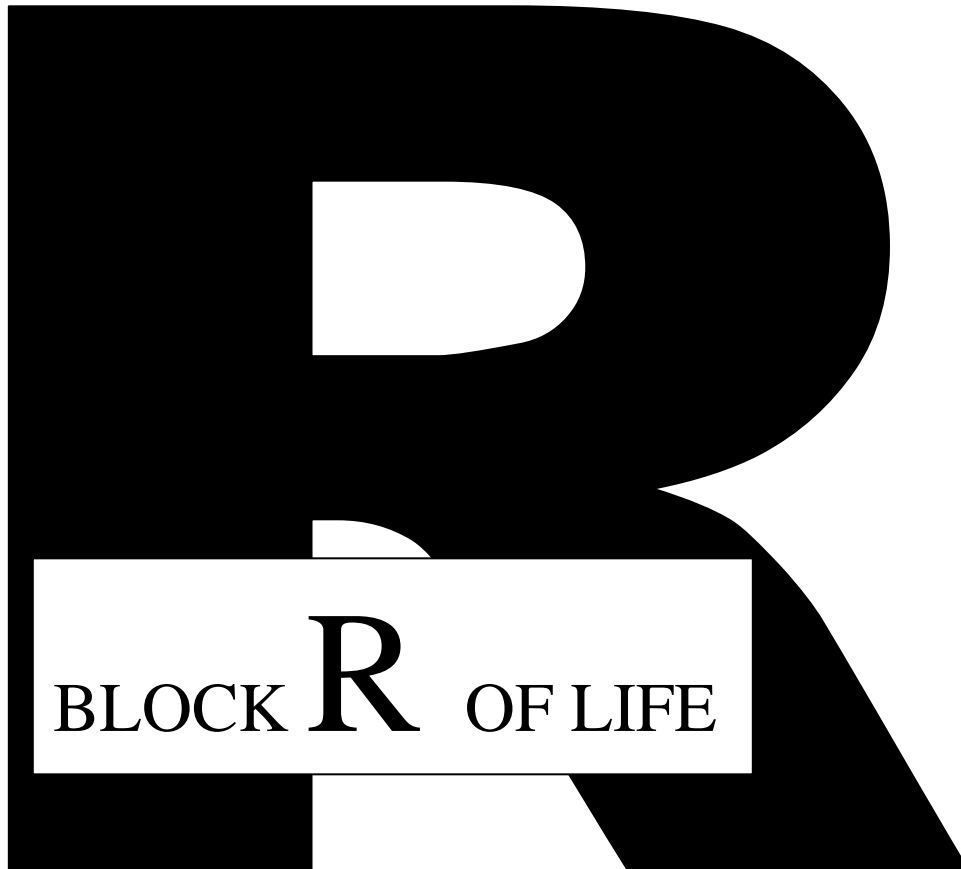
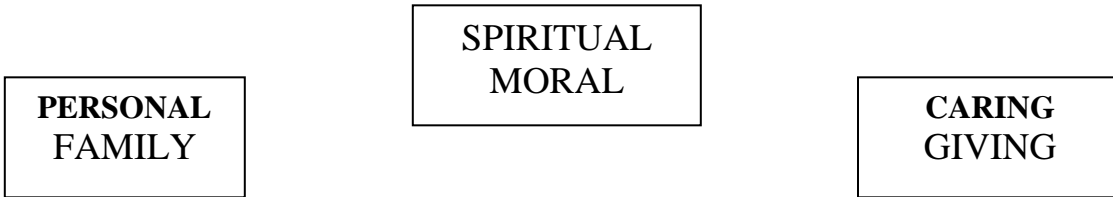


RIVERDALE LOCAL SCHOOLS
STUDENT-ATHLETE HANDBOOK



2019 - 20

THE POWER OF ATTITUDE: Our lives are not determined by what happens to us, but how we react to what happens; not by what life brings to us, but by the attitude we bring to life. A positive attitude causes a chain reaction of positive thoughts, events, and outcomes. It is a catalyst...a spark that creates extraordinary results.

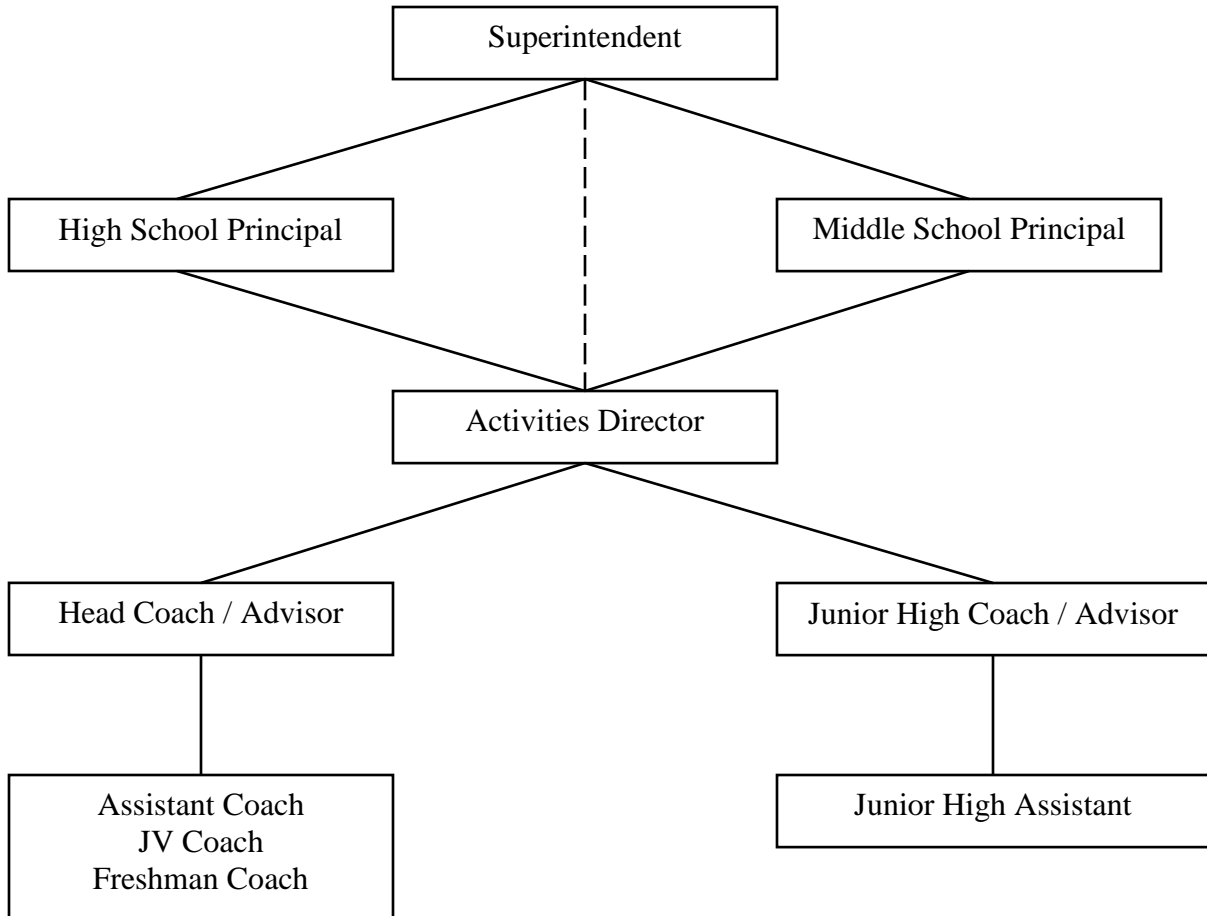


THE COURAGE OF INTEGRITY: The highest courage is to dare to be yourself in the face of adversity. Choosing right over wrong, ethics over convenience, and truth over popularity...these are the choices that measure your life. Travel the path of integrity without looking back, for there is never a wrong time to do the right thing.

CHAIN OF COMMAND (for students and parents)

CHAIN OF COMMAND

If you have a concern, please follow the chain of command to voice your concern.



If you are not sure of the Coach's name or how to contact him/her, call the Activities Director's Office at 419-694-2211 x1703 or email – ctaylor@riverdale.k12.oh.us . The Activities Director will: 1) Advise you as to the person in the chain you should contact and give you the information you need to do so; 2) Conduct an internal investigation into your concern or problem and get back to you; 3) If there is a problem in contacting the proper person, they will contact the proper person and have him/her contact you; or 4) If you desire, set up a conference with you, the coach, himself/herself, and the Principal.

The Athletic Program, Philosophy, Goals and Handbook will be used as a guideline in resolving problems. The administration wants to help in any way possible to resolve problems. Input from parents, students and fans can be beneficial in improving our athletic program and making it the best in the area. We feel that the Chain of Command listed will help eliminate serious problems and confusion.

ATHLETIC CODE OF CONDUCT (STUDENT SECTION)

This handbook is being presented to you because your son/daughter desires to participate in interscholastic athletics at Riverdale Local Schools. You have also expressed your willingness to permit him/her to compete. Your family's interest in this phase of our school program is gratifying. We believe that participation in sports provides a wealth of opportunities and experiences, which assist students in personal growth and development.

The Riverdale Local School District is interested in the development of young men and women through athletics. We feel that a properly controlled, well-organized sports program meets students' needs for self-expression, mental, and physical growth. It is our hope to maintain a program that is sound in purpose, and will further each students' educational maturity.

Likewise, we believe that you have committed yourselves to certain responsibilities and obligations as a parent(s)/guardian(s)/custodian(s) of an athlete. We would like to take this opportunity to acquaint you with specific policies that are necessary for a well-organized program of athletics.

It is the role of the Athletic Council to make rules governing interscholastic competition. These rules need broad based community support to be fully effective. This is achieved only through communication between the Athletic Department and the parent(s)/guardian(s)/custodian(s) of our athletes. It is our hope to accomplish this objective through this athletic handbook for students, parents and coaches.

ACKNOWLEDGMENT OF ATHLETIC POLICIES

- A. We believe that the responsibility of an athlete to his/her fellow athletes is a year-round commitment and does not end with the season. Therefore, the Athletic Code of Conduct is in effect for 12 months (24 hours a day, 7 Days a week, 52 weeks of the year) beginning with the date the student-athlete first participates in a sport (grades 7-12) and ends when that student-athlete graduates.
- B. Each student and parent/guardian shall read all of the enclosed material and certify that they understand the Drug/Alcohol Policies and other Athletic Code of Conduct Policies of the Riverdale Local School District. The signed informed consent waiver will be filed in the Activities Director's office.

ATHLETIC CONFERENCE

Riverdale Schools are a member of the OHSAA and the Blanchard Valley Conference (BVC). We will compete for league championships in the following Varsity sports: Baseball, Boys and Girls Basketball, Cross Country, Football, Golf, Softball, Boys and Girls Track, Volleyball and Wrestling. The BVC does not recognize Junior High, freshman or Reserve League Championships.

Boy's and Girl's Soccer will compete for League Championships in the NCOSA (North Central Ohio Soccer Association).

While cheerleaders do not compete for League Championships, they are an important part of the athletic team and are to be considered to follow the same rules of the team.

SPORTS SEASONS

Once a student has become a student-athlete at Riverdale that student will be considered to be a student-athlete until he or she graduates. As such, the student-athlete will be governed by Handbook regulations. The sports season starts the first day of practice and is officially over after the awards banquet is held.

ADMISSION PRICES

1. EVENT CHARGES (Fall & Winter)

	Adult	Student
A. High School Contests	\$6	\$4
B. Separate Freshmen or JV Contests	\$4	\$3
C. Middle School Contests	\$4	\$3
D. OHSAA Tournaments	\$6	\$4
E. Annual Passes (admit 1)	\$100	\$75
F. Family Pass	\$350	

1. RIVERDALE ATHLETIC PASSES ARE NOT ACCEPTED FOR ADMISSION INTO ANY: AWAY CONTESTS OR RIVERDALE HOSTED OHSAA TOURNAMENTS

2. GOLDEN FALCON ATHLETIC PASSES

FREE

(Senior Citizens over 62 yrs. old & living in the Riverdale School District.)

ATHLETIC TRAINING SERVICES

- A. A certified athletic trainer is available in the high school from 2:15pm – 3:00pm on Most days, and at most home varsity contests. Because of time & financial constraints, most middle school contests cannot be covered.
- B. Any athlete who misses a contest due to injury or prolonged sickness must have a release form signed by a doctor on file in the Activities Director's and Principal's office before they can participate or practice in an extra-curricular activity.
- C. All athletes are required to report any injury to the trainer/coach.
- D. The coach and trainer must be informed in writing if the athlete is taking any type of medication.
- E. The coach and trainer must be advised of any medical problems or concerns, such as diabetes or epilepsy, etc.
- F. When a student-athlete sees a doctor, a progress report as to practice capabilities is to be given to the coach/trainer.

- G. Take care of your body; shower properly and report any skin infections to the trainer and the coach.
- H. Athletes are NOT to be in the training room without the coach and/or trainer.
- I. Put all trash and used tape in trash containers.
- J. Trainers have the right to withhold a student-athlete from practice or game situations if an injury is being evaluated or there is concern of injury.

PRACTICES

- A. The time, place and date of all practice sessions will be predetermined with adequate notice given to all participants, coaches, administrators and central office.
- B. Practice will be concluded and athletes dismissed at the scheduled time – if this becomes a problem, please notify the Activities Director as soon as possible.
- C. All practices will be concluded by 9:00 p.m., Monday through Saturday.
- D. Practice sessions of any nature on **Sunday must be approved by the Principal and the Board of Education** and will be only on a voluntary basis.
- E. Exceptions to the above will be approved by the **Principal, the AD and the Board of Education.**
- F. All Riverdale athletic practices are to be scheduled, organized and directly supervised by the Head Coach/Advisor.

ATTENDANCE-PARTICIPATION POLICY

1. TO SCHOOL

- A. In order to participate in a school-day practice or contest, a student athlete must be in attendance by 11:00 AM (10:30 AM for 2 hr. delays), and remain in attendance until the end of the school day.
- B. Field trips, alternate learning experiences, medical/dental appointments, and special family situations may be excused by an administrator.

2. SUSPENSION FROM SCHOOL

Any student-athlete suspended/expelled from school or serving an in-school suspension, due to a student conduct violation, will be denied practice and/or contest participation privileges, during the period of suspension.

3. TO PRACTICE/CONTESTS (attendance during snow/ice calamity days is not mandatory)

A. Absence from Practice:

1. Excused

- a. Advance notice from athlete in writing to the appropriate coach.
- b. Reason considered unavoidable and excusable by the coaches.
- c. Penalty - Athlete may miss necessary mental and physical preparation for contest, resulting in non-participation in that contest. This is solely determined by the coach.

2. Unexcused

- a. All absences not falling into the excused category above.
- b. Penalty - First offense - suspended for the next contest. Second offense - suspension for the remainder of season.

B. Absence from Contest: (including Saturday)

1. Excused

- a. Advance notice to coaches
- b. Emergency situation
- c. Penalty - Athlete may be required to make-up lost time. This is solely determined by the coach.

2. Unexcused

- a. All absences not falling into the excused category above.
- b. Penalty - First offense - suspension from next two contests. Second offense - suspended for rest of season.

C. Holidays/Vacations:

1. Vacations - If an athlete is going on a family vacation with parent/guardian or is attending a school-related activity during a school recess, advance notice must be given to the coach by the first day of official team practice. Coaches determine consequences for missed practices/contests.

- a. Excused-If practice or contests are missed see item #3-A-1 or #3-B-1 for penalty.
- b. Unexcused – If practice or contests are missed see item #3-A-2 or #3- B-2 for penalty.

AWARDS / RECOGNITION POLICIES

1. AWARDS PROGRAMS

A. At the conclusion of each season, the Athletic Department conducts awards assemblies/programs for athletes in grades 9-12.

B. Middle school students may receive participation award certificates.

C. High school athletes receive various awards at an awards program, scheduled in the evening.

D. **ATHLETIC BANQUET** – All Riverdale student-athletes are expected to dress in an appropriate manner for the post-season awards banquet. Student-athletes are reminded that the Riverdale dress code applies to the award banquets and any student-athlete that is wearing inappropriate clothing will be asked to change. If a change of clothing does not take place, then the student-athlete will be asked to leave the banquet.

2. AWARDS PROGRAM PARTICIPATION POLICY

- A. If any student athlete, at the conclusion of the season, is not a team member in good standing as a result of not proving substantial effort to complete the required educational assistance program or assessment and follow-up program, the athlete could forfeit the privilege to attend the awards program and to receive all letter and/or
- B. If any student athlete, at the conclusion of the season, has not turned in all uniforms/equipment, the athlete may not receive any awards until this obligation has been met.

3. SENIOR NIGHT

During the Fall and Winter seasons, the Athletic Department conducts senior parent recognition nights during a selected athletic contest. At these activities, seniors are introduced with their parents with a brief (because of time constraints) biography read of what the student has accomplished.

4. TYPES OF AWARDS

A. Varsity Letter:

It is desired that the letter “R” be something the athlete must earn by athletic ability, but not be so unattainable that only the outstanding athlete can achieve it. It is also desired that the coach of each sport have a large amount of leeway in determining who receives the letter. The letter requirements for each sport are listed below. These letter requirements are also kept on file in the Activities Office.

Baseball – Participate in one third of innings played

Basketball – Participate in one third of quarters played

Cross Country- Be in the top 7 in points

Football- Participate in one third of quarters

Golf- Participate in one half of the matches played

Soccer- Participate in one third of the halves played

Softball- Participate in one third of the innings played

Track- Participate in three-quarters of the meets or avg. 1 pt. per meet

Volleyball- Participate in one third of the matches played

Wrestling- Participate in one third of the matches played

B. Reserve Certificate:

A certificate presented at the Awards Program, to athletes for participation in junior varsity level sports.

C. Participation Certificates:

A certificate presented at the Awards Program, to athletes for their participation in a various athletic program.

D. Freshmen Numerals:

Numbers indicating year of graduation are presented to Freshmen or first year players upon completion of their season.

E. All-League Awards: (varsity level)

All-league selections are conducted by the head coaches within the league of that sport. Keep in mind that our school is only (1) vote and coaches cannot vote for their own players. First & Second Team selections receive a plaque and Honorable Mention selections receive a certificate, presented at the Awards Program.

F. All-District Awards: (varsity level)

1. All-district selections are conducted by the head coaches within the northwest district of that sport. Keep in mind that our school is only (1) vote.

2. There are other forms of all-district honors, such as; Associated Press and other local newspapers selections. Certificates are generally presented to these individuals at the Awards Program. Some associations invite the winners to a banquet.

G. State Awards: (varsity level)

The media, coaches associations, or other agencies select these awards.

H. School Records Awards: (varsity level)

Current school records for each sport are kept on file with the head coach of that sport. When an athlete breaks or ties a school record, they are presented with a certificate at the awards program.

I. Dedicated Falcon Award (3 x 4 Award)

This award is presented annually to those athletes who have participated in three sports for four years. A plaque will be presented to the recipients of this award at the spring academic awards banquet, during their senior year.

J. Wall of Fame (individual):

Members of the current Wall of Fame are displayed outside the gymnasium on the wall in the hallway. For individual recognition, an athlete must earn first team All-Ohio honors in their sport or stand on the podium in the state championships of their sport. Individual state champions will also get a state of Ohio cut-out with their name and accomplishment to be placed on the wall inside the gymnasium.

K. Wall of Fame (team):

Members of the current Team Wall of Fame are displayed outside the gymnasium on the wall in the hallway. For team recognition, a team must make the final four in the state championship of their sport or stand on the podium in the state championship of their sport. Additionally, teams will also get a state of Ohio cut-out if they appear in the final four of their sport or if the football team makes the state playoffs.

L. Managers Award:

All students who have been selected to compile statistics for a sports team must do so satisfactorily for the entire season and is entitled to the appropriate awards for that sport. Any student who manages satisfactorily for the entire sports season is entitled to the appropriate awards for that sport.

5. WEARING OF AWARDS POLICY

It is the firm belief of the Riverdale Athletic Department that awards earned should be worn with dignity and class. Athletes are to display their awards in such a manner and are expected to behave in an appropriate manner when wearing them; the athlete represents the team and the school when wearing the award - actions that detract from a positive image will not be accepted.

6. TEAM CAPTAINS

The position of Captain is not just an honor but a privilege. This honor will require the utmost leadership knowing that the captain will be a role model for other team members. Student-athletes begin to hold the position of Captain when announced by the coach, if the coaches so desires to have someone hold that position. Failure to comply with the rules and regulations of the Athletic Department and Team may lead to the dismissal of the title of captain.

BOOSTER CLUBS

1. ATHLETIC BOOSTERS

- A. The Athletic Boosters Club was formed to promote and assist the athletes of Riverdale Local Schools. The Boosters meet the second Monday of each month at 7:00 PM in the high school conference room. All parents are encouraged to attend.
- B. The Boosters major fundraising activities include the 200 Club, 50/50 raffles and outdoor concessions. The meetings held each month help to organize these activities. In addition to providing funds that are vital to our athletes, the Boosters are also heavily involved in making the many tournaments hosted by Riverdale a tremendous success. Please continue to say "yes" when you are asked to help, and consider attending a meeting to help on the organizational level. Your son or daughter benefits directly from the efforts of this group of volunteers.
- C. CONCESSION STAND WORKER POLICY
Parents are required to work (1) game as a concession stand volunteer during the football season, the football parents are required to work the soccer concession stand. Two groups are paired up to help with concessions at the five home football games and coaches are given this information and are responsible for contacting parent volunteers. The responsibility of these two groups also includes bleacher clean-up after the football game. Parents will complete a sign-up form and will be contacted regarding their assigned game.

CANCELLATIONS POLICY – INCLEMENT WEATHER

1. SEVERE WEATHER

- A. Tornado Warnings - All athletic activities will be suspended when a “Tornado Warning” exists in either Hancock, Hardin or Wyandot County or any county for which a team is traveling to. Upon notification of a Tornado Warning all student-athletes will be immediately directed to the nearest safe structure and remain there until the all clear is given.
- B. Coaches are advised if their team is off campus and the potential exists for severe weather, that they inquire from the opposing school as to where the team can seek shelter if needed. This should be done upon arrival to the off campus site. No bus will depart and travel into or through the path of a county under a Tornado Warning.
- C. Severe Thunderstorms - All athletic activities should be suspended when lightning is detected or a clap of thunder can be heard in the area of participation, Student-athletes should be moved to a safe location until at least (30) minutes after the last lightning strike is detected or clap of thunder is heard.
- D. If a contest is in progress, and you encounter an official who does not follow this procedure, remind them of the OHSAA Policy and move all student-athletes to a safe location. The athletic department will deal with any uncooperative official in regards to this policy.

2. FALL SEASON

School closures due to fog generally will not cause any cancellations at the high school level. However, fog closures at the middle school level may result in activities being canceled.

3. WINTER SEASON

- A. Early dismissal from school: ALL practices & contests are canceled. *Athletes are expected to leave the building and go home with the rest of the student body.* Coaches will not be allowed to schedule practices at alternative facilities on days practices are canceled or school is released early due to inclement weather
- B. School Closed: (Calamity Day) If approved by the school administration, practices may occur. *Practices are on a “Voluntary” basis.* They **CANNOT** be mandatory. Coaches will not be allowed to schedule practices at alternative facilities on days practices are canceled or school is released early due to inclement weather

NO Activities will occur if Hancock, Hardin or Wyandot Counties are under a Snow Emergency of Level 2 or 3. An administrative decision will be made by 12:00 noon if practices are allowed when school is closed. No practice will begin before 12:00pm if school is closed.

- C. If practices are permitted on days school is canceled, all practices will be over by 5:00pm.

- D. No middle school practices are allowed on days school is canceled and all middle school contests are canceled if school is canceled or dismissed early
- E. The decision to play a contest is on a case by case situation (due to travel conditions). However ALL middle school contests are canceled. An administrative decision will be made regarding games by 3:00pm.

4. SPRING SEASON

- A. School closures due to fog generally will not cause any cancellations at the high school level. However, fog closures at the middle school level may result in activities being canceled. Baseball and Softball activities may incur cancellations due to rainy weather. Baseball, Softball and Track will be canceled if the temperature is below 30 degrees (including wind chill) at 2:30pm on the day games are scheduled. Track meets may be canceled if thunderstorms are in the area.
- B. The decision to cancel is generally made by 2:00 PM and placed on the Riverdale website and is called into local media. Ice & snow conditions early in the Spring season may cause cancellations to practices.

COACH'S POLICIES

Each coach is encouraged to set team rules in addition to the rules in the Code of Conduct. Rules and penalties for tardiness, curfew violations, inappropriate practice/game dress, and misconduct are examples of acceptable coach's guidelines. These rules should be given in writing to all athletes, parents and the Activities Director and Principal at the beginning of each season.

COLLEGE RECRUITMENT POLICY

In the event an athlete should be contacted personally by a college recruiter, he/she has an obligation to work through his/her coach and the athletic department. Inform your coach of such a contact as soon as possible.

CONDUCT OF AN ATHLETE

1. EXPECTATIONS

- A. A firm and fair policy of enforcement is necessary to uphold the regulations and standards of the Athletic Department. The community, the school administrators, and the coaching staff feel strongly that high standards of conduct and citizenship are essential in maintaining a sound program of athletics. The welfare of the student is our major consideration and transcends any other consideration.
- B. The conduct of an athlete is closely observed in many areas of life. It is important that your behavior be above reproach in all of the following areas:

1. In the classroom - In the academic area, a good athlete becomes a good student. A person cannot be a classroom laggard and think he/she can be an outstanding athlete. If you are lazy in class, you will be lazy on the practice field, floor, or mat, and will never reach your full potential. As an athlete, you must plan your schedule so that you give sufficient time and energy to your studies to insure acceptable grades.
2. In addition to maintaining good scholarship, an athlete should give respectful attention to classroom activities and show respect for other students and faculty at all times. Horseplay and unnecessary boisterousness are not approved habits of behavior.
3. School discipline referral - Any student referred to the office for a school rules violation may be denied the privilege of participation in all athletic activities for a period determined by either the coach or the Activities Director.
4. On the field - In the area of athletic competition, a true athlete does not use profanity or illegal tactics, and learns fast that losing is part of the game. You should be gracious in defeat and modest in victory. It is always courteous to congratulate the opponent on a well-played game after the contest, whether in defeat or victory.

2. RESPONSIBILITIES OF A RIVERDALE ATHLETE

- A. Being a member of a Riverdale Local Schools athletic team is the fulfillment of an early ambition for many students. The attainment of this goal carries with it certain traditions and responsibilities that must be maintained. A great athletic tradition is not built overnight. It takes the hard work of many people over many years. As a member of an interscholastic squad, you have inherited a wonderful tradition. A tradition you are challenged to uphold.
- B. Our tradition has been to win with honor. We desire to win, but only with honor to our athletes, our school, and our community. Such a tradition is worthy of the best efforts of all concerned. Over many years, our squads have achieved a high level of success. Many individuals have set records and won All-League, District, and State honors.
- C. It will not be easy to contribute to such a great athletic tradition. To compete for your school, you will have to say “no” to pleasures an athlete cannot afford. When you wear the Royal Blue and White, we assume that you not only understand our traditions, but also are willing to assume the responsibilities that go with them. However, the contributions you make should be a satisfying accomplishment to you and your family.

3. RESPONSIBILITIES TO YOURSELF

The most important of these responsibilities is to broaden yourself and develop strength of character. You owe it to yourself to get the greatest possible good from your school experiences. Your studies, your participation in other extra-curricular activities, as well as in sports, prepare you for life as an adult.

4. RESPONSIBILITIES TO YOUR SCHOOL

- A. Another responsibility you assume as a squad member is to your school. Riverdale Local Schools cannot maintain its position of having outstanding programs unless you do your best in whatever activity you wish to engage. By participating in athletics to the maximum of your ability, you are contributing to the reputation of your school.
- B. You assume a leadership role when you are on an athletic squad. The student body and the citizens of the community know you. You are on the stage, with the spotlight on you. The student body, the community, and other communities judge our school by your conduct and attitudes, both on and off the field. Because of this leadership role, you can contribute greatly to school spirit and community pride. Make Riverdale proud of you, and your community proud of your school by your faithful exemplification of these ideals.

5. RESPONSIBILITIES TO OTHERS

As a squad member, you also bear a heavy responsibility to your home. You should never give your family anything of which to be ashamed. You must measure up to all of the training rules. You should practice to the best of your ability every day. If you have played the game “all out”, you can keep your self-respect, and your family can be justly proud of you. The younger students in the Riverdale Local School District are watching you. They will copy you in many ways. Do not do anything to let them down. Set good examples for them.

6. CONSEQUENCES

- A. All athletes shall abide by a code of conduct, which will earn them the honor and the respect that participation and competition in the interscholastic program affords. Any conduct that results in dishonor to the athlete, the team, or the school will not be tolerated. Acts of unacceptable conduct, such as, but not limited to, theft, vandalism, disrespect, immorality, or violations of law, tarnish the reputation of everyone associated with the school and will not be tolerated. The coach and/or the Activities Director will determine denial of participation for these types of violations. Consequences may involve:
 - 1. Extended Physical Conditioning
 - 2. Suspension from practice(s) / contest(s)
 - 3. Loss of any leadership position for remainder of school year.
 - 4. Removal from team
 - 5. Restitution
 - 6. Denial of participation
 - 7. DISCIPLINARY PROCEDURES
- B. When school personnel learn that a student has violated or is suspected to have violated any rule, the Activities Director and Principal (designee) shall be notified immediately. The investigation shall be initiated within 72 hours of notification.

- C. The student may be temporarily removed from an athletic contest and/or practice by the Principal (designee), Activities Director (designee), or coach responsible for supervision of that activity.
- D. A review committee, consisting of, but not limited to, the coach/advisor, Activities Director and/or Principal at a minimum, will meet to investigate the violation. If the review committee feels action beyond temporary removal is warranted, the Principal or designee shall inform the student and the parent of the specific violation and possible penalty.
- E. An informal hearing with the student and the review committee will be held.
- F. Violations shall be determined based on the totality of all reasonable, available evidence. The review committee shall have the authority to hear testimony, receive sworn statements and evidence, and take any other reasonable actions necessary to reach a decision.
- G. The building Principal/Designee will inform the student and the parents of the review committee's decision.
- H. The review committee's decision may be appealed to the Superintendent/Designee.
- I. During an appeal, the student may practice, but may not participate in any official activity pending the outcome of the hearing conducted by the Superintendent/Designee. The decision of the Superintendent/Designee is final.

CONFLICTS

1. MULTIPLE SPORT PARTICIPATION

- A. An individual student who attempts to participate in too many extra curricular activities will, undoubtedly, be in a position of a conflict of obligations. Athletes (grades 7-12) may participate in multiple sports per season. In order for this to happen, the student, Activities Director, Parents and BOTH coaches involved will need to meet PRIOR to the start of that season. The meeting will document the athlete's priority sport (priority sport will have precedence for all games/practices). The meeting will also determine the athletes schedule for both sports for the entire season. **BOTH COACHES MUST AGREE.** Some sports will lend themselves to this procedure, and others will not. It is important that the **COACHES have the final say in the matter,** as it is their program that will be directly impacted by such decisions.
- B. Students have a responsibility to do everything they can to avoid a continuous conflict. This would include being cautious about belonging to too many activities where conflicts are bound to happen. It also means notifying the faculty sponsors involved immediately when a conflict does arise.

2. CONCERNS/COMPLAINTS

- A. With few exceptions, the chain of command should be followed in dealing with problems, questions, or complaints. *Do not confront coaches before or after contests or practice.* Call to set up an appointment with the coach. If a meeting with the coach did not result in a satisfactory resolution, then call to set-up an appointment with the Activities Director. Failure to follow chain of command will only delay any resolution. The chain of command is as follows:
1. Direct Coach (JV, Freshmen, Junior High)
 2. Head Coach
 3. Activities Director
 4. Principal
 5. Superintendent
 6. Board of Education
- B. Inappropriate Issues to Discuss with Coaches:
1. Game strategy, play calling or other student athletes.

CONTACT INFORMATION

- A. Contact phone numbers & email addresses for coaches and related athletic administration can be obtained by attending the coach's pre-season meeting and also by contacting the Activities Director.

DROPPING SPORTS POLICY

An athlete may find it necessary to drop a sport for a good reason. If this is the case, the following procedure must be followed:

1. Immediately talk with your coach.
2. Check in all equipment issued to you.
3. An athlete who quits a sport may not participate in another sport during that same sports season..
4. If a student quits a team, the head coach, Principal and Activities Director will make the final decision on whether that student may return. Any penalty involved in such a return will be decided upon prior to the student being placed back on the team. Any athlete who has quit the team will not be eligible to participate in any other extra-curricular event/team during that same sports season. They may continue to participate in any support activity they were involved with.

DRUG, ALCOHOL, AND TOBACCO POLICY

1. PHILOSOPHY

The policy is designed to help students and parents cope with drug, alcohol, and tobacco use. Therefore, the policy is in place to provide guidelines for each student/family to receive assistance as needed. Accordingly, the policies established by the Riverdale Local Schools' administration are based upon the following beliefs:

- A. We believe that there is no such thing as responsible use of controlled substances/mood altering chemicals, alcohol, tobacco or vaping by any high school student. Adolescent use is not only against the law - it jeopardizes the student's health and safety, and it inhibits attainment of individual potential. Therefore, any use of controlled substances/mood altering drugs, alcohol, tobacco or vaping by student athletes will not be tolerated.
- B. We believe that participation in athletics is a privilege, not a right. Student athletes are in a highly visible setting of leadership and/or competition/performance. Therefore, these student athletes will be held to a higher accountability of conduct and behavior than the student who chooses neither to participate nor to represent Riverdale Local Schools.
- C. We believe that the school's ignoring a rumor implies consent. Therefore, all reports, information, or rumors will be investigated by coaches, advisors, and/or administration.
- D. We believe that the parent(s)/guardian(s)/custodian(s) of a student athlete have a right to be informed. Therefore, the parent(s)/guardian(s)/custodian(s) will be contacted regarding findings by school staff.
- E. We believe that violating the Drug Policy in a school or community setting reflects poorly on the individual, family, team/organization, and school. Therefore, violations of this nature will carry penalties in regard competition/contests/performances.
- F. We believe that participation is better than exclusion. Therefore, first offense violations allow the student to remain a member of a team as long as he/she follows the assistance recommendations.
- G. We believe that the school nurse, trainer, team doctors, coaches, and guidance departments are interrelated. Therefore, these departments must share information in an effort to promote a lifestyle among students that is drug, alcohol, and tobacco free. Professional judgment will be used regarding the sharing of confidential information shared with school staff; however, we believe that when all resources are called upon for assistance, more help can be provided to the student.

2. PURPOSE

- A. To provide a healthy and safe environment to all student athletes participating in the athletic program.
- B. To discourage or provide a deterrence for all student athletes from using drugs and alcohol.
- C. To provide solutions for the student athlete who does use drugs and alcohol.
- D. To provide the athletic department with guidelines and disciplinary policies for violations of the drug free policy.

**Policy for Random Urine Drug Testing of Riverdale
School District Students**

OVERVIEW

The procedure for initial and random drug testing of students in athletics, extracurricular activities, and students wishing to obtain a parking permit is accomplished in conjunction with an independent drug testing Vendor selected by the Board of Education. Following the initial testing, the Vendor is provided by the Designated Official a list of eligible students and in turn randomly selects up to 20% of these students for drug testing at regular intervals. The Vendor will send qualified collectors to the school who will oversee the collection and testing of all specimens as outlined in this document. Results are reported to the Building Principal or Designated Official by the vendor.

1. A STATEMENT OF NEED AND PURPOSE

Recognizing that observed and suspected use of alcohol and illicit drugs by Riverdale School District students is a serious concern, a program of deterrence will be instituted as a pro-active approach to a truly drug free school. Likewise, students using illegal drugs pose a threat to their own safety, as well as to that of other students. The purpose of this program is fourfold:

- (1) to provide for the safety of all Students;
- (2) to undermine the effects of peer pressure by providing a legitimate reason for Students to refuse to use illegal drugs;
- (3) to encourage Students who use drugs to participate in drug treatment programs; and
- (4) prevent the impact drug and alcohol use has on the learning centers of the brain allowing students to achieve their full academic potential while a student within Riverdale Schools.

The program is designed to create a safe, drug free, environment for Students and assist them in getting help when needed.

2. SUPPORTING DATA

- B.** Random urine drug testing of a public school is legal as determined by the United States Supreme Court in the case of *Vernonia School District 47J (Oregon) v. Wayne and Judy Acton* and *Pottawatomie v. Earls*.

3. DEFINITIONS

Vendor - The medical office or company selected by the Board of Education to carry out the policy and procedure.

Designated Official - The individual hired by the school or district to oversee the drug testing program of the school or district.

Medical Review Officer (MRO) - A licensed physician trained and certified in the process and interpretation of drug testing results.

Illicit substance - A drug classified by the Drug Enforcement Administration (DEA) as being available only by prescription from a physician or classified as being controlled and having no therapeutic use.

Banned Substance - A substance defined by School policy as being banned from use by students.

Student Participant - A qualified student participating on a sanctioned athletic team as defined by the State Athletic Association, an extracurricular activity as defined by the board, or a student wishing to receive a parking permit.

SAMHSA - The Substance Abuse and Mental Health Services Administration; a governmental agency that certifies toxicology laboratories that perform drug testing following strict guidelines and constant quality assurance programs.

GC/MS - Gas Chromatography/Mass Spectroscopy; a scientific process to identify specific chemical compounds. A molecular fingerprint is obtained that identifies a chemical compound with 100% accuracy.

Quantitative Levels - The measurement levels of a specific chemicals in the urine reported usually in nanograms per milliliter (ng/mL).

Chain-of-custody Form - A preprinted form provided by the testing laboratory that records all contact with the provided specimen. The form is initiated by the collector and donor then follows with the specimen until the results are certified by the testing scientist and forwarded to the MRO for final certification.

Adulterant/Adulteration – Any attempt to alter the outcome of a urine drug test by adding a substance to the sample, attempting to switch the sample, or otherwise interfere with the detection of illicit or banned substances in the urine, or purposefully over hydrating oneself in an attempt to dilute the urine to decrease possible detection of illicit or banned substances.

4. PROCEDURES FOR STUDENTS

a. Informed Consent for Testing

At the beginning of each year/season or when a student moves into the District, students and parent/guardian/custodian will complete and sign the **Riverdale Code of Conduct and Expectations Informed Consent Agreement** (Exhibit A). No student may participate and/or receive a parking permit until this form is properly executed and on file with the School.

b. Urine Drug Testing Frequency

At the beginning of each year/season or when a student moves into the District, all students wishing to participate in athletics, extracurricular activities, or park on campus may be subject to urine testing for illicit or banned substances as specified in Paragraph 9 below. Following initial testing, up to 20% of eligible students will be randomly tested on up to a bi-weekly basis anytime during the school year. Any student who refuses to submit to urine drug testing will be considered a positive test under article 7b.

c. Sample Collection

Samples will be collected as outlined under Vendor Requirements, Paragraph 6 below. Any eligible student selected randomly for urine drug testing who is not in school on the day of testing will be tested at the next available testing time. Students not able to provide an adequate urine specimen at the testing time will be unable to participate or park until the proper specimen is provided. Arrangements may be made for special collections at a Vendor Collection site with prior approval of the Building Principal or Designated Official. There may be an additional fee associated with the use of an off-site collection point.

5. CONFIDENTIALITY OF RESULTS

All drug test results are considered confidential information and will be handled accordingly. Those persons having results reported to them as set forth by this Policy must sign a Confidentiality Statement (Exhibit B).

6. VENDOR REQUIREMENTS

At a minimum, the Vendor must be able to provide the following services:

a. Random Selection of Eligible Students

Once provided a list of eligible students, the Vendor must select the required number of students in a random and confidential manner. Up to bi-weekly, the Vendor will arrange with the Designated Official a day and time to do the collection of specimens. The schedule will not follow any recognizable pattern. The selected student ID numbers will be given to the Designated Official, who will arrange for these students to report to the collection area.

b. Collection of Urine Specimens

The Vendor will oversee the collection of urine specimens as outlined in the **Procedures for Random Urine Drug Testing of Riverdale School District Students**. Students will be given as much privacy as possible in the obtaining of the specimen.

c. Testing of Urine Specimens

The Vendor will have all specimens tested for the specified illicit or banned substances by a qualified collector. All specimens will be tested using a highly accurate immuno-assay technique.

The collector must be able to test for the following drug classes, substances or their metabolites in collected urine specimens. The Building Principal may specify specific classes or substances to be tested.

Alcohol	Amphetamines	Anabolic Steroids	
Barbiturates		Benzodiazepines	Cocaine Metabolites
LSD		Marijuana Metabolites	Methadone
MDMA (Ecstasy)		Nicotine	Opiates
Phencyclidine		Propoxyphene	

d. Reporting of Random Urine Test Results by Vendor

The collector will certify all urine drug screens as negative or positive. Positive findings will be reported by person in a confidential manner to the Building Principal, who will then contact the parents.

e. Statistical Reporting and Confidentiality of Urine Drug Test Results

The Vendor, testing laboratory, or MRO may not release any statistics on the rate of positive drug tests to any person, organization, news publication or media without expressed written consent of the Riverdale School District Board of Education. However, the Vendor will provide the Building Principal with an annual report showing the number of tests performed, rate of positive and negative tests, and what substances were found in the positive urine specimens.

7. PROCEDURES IN THE EVENT OF A POSITIVE RESULT

- a. Whenever a student's test result indicates the presence of illegal drugs or banned substances or adulteration, the following will occur after notification of the parent:
- (1) The Building Principal, within 24 hours, will notify the parent/guardian/custodian first, then the student and Designated Official of any positive results. A written notification from the Building Principal, by form letter, will be sent to the parent/guardian/custodian by certified mail. The Building Principal may keep all test results for a period up to one year.
 - (2) The collector may use quantitative results to determine if positive results on repeat testing indicate recent use of illicit or banned substances or the natural decline of levels of the illicit or banned substance from the body. If the MRO feels the quantitative levels determined to be above the established cutoffs do not reflect current use but natural decay, then a negative result may be reported.

b. First Positive Result

A positive result from the collector or an altered sample will constitute a first positive. The student participant will forfeit 30% of their activity and/or driving, participate in a drug assistance program, and submit to three follow-up drug tests at the parent/guardian expense. Failure to comply will result in indefinite suspension from activities and/or driving privileges.

c. Second Positive Result

A second positive result by collector ruling or adulteration will result in the forfeiture of one calendar year of their activity and/or driving, complete a program recommended by a certified substance abuse counselor, and continue or repeat the three follow-up drug tests at the parent/guardian expense. Failure to comply will result in indefinite suspension from activities and/or driving privileges.

d. Third Positive Result

A third positive result or ruling of adulteration, the student participant will be banned from participation in any athletic activity, extracurricular activity and/ or parking on campus for the remainder of their Riverdale school career.

e. Self Referral.

A student who refers themselves prior to receiving a positive result from the collector will comply with the requirements set in section 7b of this policy, except there will be no forfeiture of the activity and/or driving privileges. Self referrals may be used as a first offense only, subsequent positives following a referral will continue to actions stated in 7c and 7d. A student may only self-refer one time while a student in the Riverdale School District.

8. NON-PUNITIVE NATURE OF POLICY

No student will be penalized academically for testing positive for illegal drugs or banned substances. The results of drug tests pursuant to this policy will not be documented in any student's academic records. Information regarding the results of drug tests will not be disclosed to criminal or juvenile authorities absent legal compulsion by valid and binding subpoena or other legal process, which the Riverdale School District Board of Education will not solicit. In the event of service of any such subpoena or legal process, the student and the student's custodial parent, legal guardian, or custodian will be notified at least 72 hours before response is made by the Riverdale School Board of Education, to the extent permitted by such subpoena or legal process.

9. ILLICIT OR BANNED SUBSTANCES

For the purpose of this Policy, the following drug classes, substances or their metabolites that can be tested for are considered illicit or banned for Riverdale School District Students:

Alcohol	Amphetamines	Anabolic Steroids
Barbiturates	Benzodiazepines	Cocaine Metabolites
LSD	Marijuana Metabolites	Methadone
MDMA (Ecstasy)	Nicotine	Opiates
Phencyclidine	Propoxyphene	

END OF POLICY

Procedures for Random Urine Drug Testing of Riverdale School District Students

1. LIST OF ELIGIBLE STUDENTS

The Designated Official will prepare a list of eligible students. This list will be forwarded to the Vendor for the random selection of students who will submit urine specimens for testing.

2. RANDOM SELECTION OF STUDENTS FOR TESTING

The Vendor will use a system to assure that students are selected in a random fashion. This system will utilize a computer based system designed specifically for the purpose of randomly selecting individuals for drug testing.

3. SCHEDULING OF URINE DRUG TESTING

Urine drug testing is unannounced. The day and date are selected by the Designated Official and confirmed with the Vendor. Random testing may be done up to bi-weekly, but not during holidays and spring break.

4. INITIAL TESTING

At the beginning of the year/season or when a student moves into the district, all eligible students may be subject to urine drug testing at the parent expense. This testing will be accomplished on a date and time coordinated with the testing Vendor. The Designated Official is responsible for seeing that all students and their parent/guardian/custodian properly sign the **Informed Consent Agreement (Policy Exhibit A)** prior to testing. A student is only required to take one initial test per year to participate and/or receive a parking permit.

5. TESTING YEAR

The testing year begins the date the first activity for the upcoming school year commences and continues for 365 days thereafter.

6. FORM COMPLETION

The Vendor is responsible for seeing that proper drug testing custody and control forms are used that satisfy the needs of the **Policy for Random Urine Drug Testing of Riverdale School District Students** and the testing laboratory. A student number will be used for identification with the student's name only appearing to the School Official.

7. COLLECTION PROCESS

Selected Students are escorted from class to the collection site. A specimen of urine is collected following this process:

- a. No purses, bags or containers may be taken into the collection area with the student. All extra coats, vests, jackets, sweaters, etc., are to be removed before entering the collection area.
- b. The collector adds a blueing agent (food coloring) to the water in the urinal or toilet.
- c. Student is asked to rinse their hands and dry them. If no water is easily accessible, a non-alcoholic wipe may be used instead.

- d. The student is told to urinate directly into the provided container and should provide a sufficient amount of urine (at least 30ml) in one attempt. The student is also told they are to hand the container of urine to the collector.
- e. The student enters a closed stall to collect the specimen, then hands the container to the collector.
- f. The collector checks the volume, reads and records the temperature within four minutes of collection, places a testing strip into the specimen and looks for evidence of tampering. If tampering is suspected, a second specimen will be requested. A second suspected tampered specimen will be considered *refusal to test* and the Designated Official notified.
- g. The Student may wash their hands and is then sent back to class.
- h. The Designated Official will be notified immediately of any student who refuses to give a urine sample, has a positive result from the test strip or is suspected of adulteration.

8. COLLECTOR RESPONSIBILITIES

The collector will review all results of urine drug testing. Any urine specimen testing positive for illicit drugs, banned substances, or adulteration will be handled in the following manner:

- a. The collector determines if any discrepancies have occurred in the **Chain of Custody**.
- b. Depending on the substances found in the urine, if necessary the parent/guardian/custodian will be contacted to determine if the student is on any prescribed medication from a physician.
- c. If the student is on medication, the parent/guardian/custodian will be asked to obtain a letter from the prescribing physician, within five working days, to document what medications the student is currently taking. Failure to provide such requested information will be considered a positive result.
- d. The collector will then determine if any of the prescribed medications resulted in the positive drug screen.
 - (1) For example, a drug screen positive for codeine may be ruled negative by the collector when he receives a letter from the treating physician that the student has been prescribed Tylenol© with codeine as a pain medication following tooth extraction.
 - (2) Or, if the student has a positive drug screen for codeine and has no documented physician order for the medication (maybe a parent gave the student one of their pills), this would likely be ruled a positive drug test by the collector.
 - (3) Drug screens positive for illicit drugs (marijuana, heroin, cocaine or alcohol, etc.) would automatically be considered positive by the collector.
- e. The collector may use quantitative results to determine if positive results on repeat tests indicate recent use of illicit or banned substances or the natural decline of levels of the illicit or banned substance from the body. If the collector feels the quantitative levels determined to be above the established cutoffs do not reflect current use but natural decay, then a negative results may be reported.
- f. Finally, the collector, based on the information given, will certify the drug test results as positive or negative. Positives will be reported to the Building Principal by person.

9. TESTING PROCESS

The Vendor is responsible for seeing that specimens are tested properly and the Chain of Custody form properly annotated.

10. PROCEDURES IN THE EVENT OF A POSITIVE RESULT

- a. Whenever a student's test result indicates the presence of illegal drugs or banned substances or adulteration, the following will occur after notification of the parent:
 - (1) The Building Principal, within 24 hours, will notify the parent/guardian/custodian first, then the student and Designated Official of any positive results. A written notification from the Building Principal, by form letter, will be sent to the parent/guardian/custodian by certified mail. The Building Principal may keep all test results for a period up to one year.
 - (2) The collector may use quantitative results to determine if positive results on repeat testing indicate recent use of illicit or banned substances or the natural decline of levels of the illicit or banned substance from the body. If the collector feels the quantitative levels determined to be above the established cutoffs do not reflect current use but natural decay, then a negative result may be reported.

b. First Positive Result

A positive result from the collector or an altered sample will constitute a first positive. The student participant will forfeit 30% of their activity and/or driving, participate in a drug assistance program, and submit to three follow-up drug tests at the parent/guardian expense. Failure to comply will result in indefinite suspension from activities and/or driving privileges.

c. Second Positive Result

A second positive result by the collector ruling or adulteration will result in the forfeiture of one calendar year of their activity and/or driving, complete a program recommended by a certified substance abuse counselor, and continue or repeat the three follow-up drug tests at the parent/guardian expense. Failure to comply will result in indefinite suspension from activities and/or driving privileges.

d. Third Positive Result

A third positive result or ruling of adulteration, the student participant will be barred from participation in any athletic activity, extracurricular activity and/ or parking on campus for the remainder of their Riverdale school career.

e. Self Referral.

A student who refers themselves prior to receiving a positive result from the collector will comply with the requirements set in section 10b of this policy, except there will be no forfeiture of the activity and/or driving privileges. Self referrals may be used as a first offense only, subsequent positives following a referral will continue to actions stated in 10c and 10d. A student may only self-refer one time while a student in the Riverdale School District.

END OF PROCEDURE

VIOLATIONS OF THE ATHLETIC CODE OF CONDUCT:

Possession or consumption of alcohol controlled substances, mood altering chemicals and tobacco or a positive test result (Drugs, Alcohol, Tobacco) and vape pens and their substances (e-liquid, dry herbs, concentrates, juices, etc.)

1st OFFENSE: Offender will not be eligible to participate in 30% of all scheduled OHSAA contests. A contest is defined as a regular season game, match or meet – scrimmages or summer games DO NOT count as a contest. If the amount of the suspension involves a decimal, the decimal will be carried out to the hundredths position and the tenths number will be rounded. Numbers 4 and less will result in the number remaining the same while numbers 5 and greater will be rounded up. For example, if the suspension comes out to 4.46, it would round up to 4.5 and the student-athlete would be suspended for four and one half game. If the suspension involves a sport that does not have halves (golf, cross country, volleyball, wrestling, baseball, softball and track) the suspension would be rounded to the whole number. In the example above, it would be rounded to 5 games. ** If the athlete does not complete his/her 30% of the season the violation occurred, the remainder of the suspension would be assessed in the next sport season.

2nd OFFENSE: Denial of participation for one (1) calendar year from the date of the second offense. He/she will forfeit all awards they may have earned in that sport for that season. The offending athlete will be required to attend and complete an appropriate treatment program before he/she will be allowed to participate again. The athlete will pay for the cost of the program and do 50 hours of community service and apply for reinstatement with a committee consisting of AD, Principal, and coach and parent/ guardian.

3rd OFFENSE: Denial of participation in extra-curricular activities at Riverdale LSD for the remainder of the student’s school career from the date of the third offense, they will forfeit all awards earned during that time.

SUSPENSION REQUIREMENTS – Athletic Code

- A. Any student-athlete serving a suspension from an Athletic Code of Conduct violation, must complete the entire season, for which they have chosen to participate.
The suspension will not be considered served, if they fail to complete their season.
- B. While serving the suspension, the athlete must attend all practices and contests. The student will travel with the team and be part of the team, at all times. However, the student may not be dressed in uniform during their suspension.

REASONABLE SUSPICION

Reasonable suspicion is still part of the Athletic Code of Conduct. Therefore, athletes who use alcohol, tobacco, or drugs will be subject to denial of participation. The Athletic Department reserves the right to enforce its policy based upon reasonable suspicion. Disciplinary action based on reasonable suspicion will be the responsibility of the Activities Director and/or Principal.

IN THE PROXIMITY

An athlete may not remain in the proximity of alcohol or drug use. An athlete will be considered “in the proximity” if they do not remove themselves from the place where alcohol is being used *illegally* by persons under the age of 21 or from the place where drugs are being used illegally. Athletes may call a parent, relative, coach, school administrator, or the Activities Director to be removed from the situation.

Any student-athlete convicted of a felony will be ineligible for one calendar year from the date of conviction.

DUE PROCESS

- A. Each student who is in violation of the Drug, Alcohol, and Tobacco Policies will be afforded due process. The student will have the right of appeal of consequences to the building Principal.
- B. This must be done, in writing, within 72 hours of the consequences being determined. All consequences will be enforced during the appeal period. A final appeal may be made to the Superintendent of schools or his/her designee, in writing, within 72 hours of the consequences being determined. All consequences will be enforced during the appeal period.

VOLUNTARY REFERRAL OPPORTUNITY

- A. Students have the opportunity for a voluntary referral procedure to seek information, guidance, counseling, and/or assessment in regard to the use or possession of tobacco, alcohol, and other controlled or non-controlled substances.
- B. Voluntary referrals may be made by the student, his/her immediate family, or from a fellow student. Voluntary referrals will not carry violation consequences on the first offense only; however, it will be counted as a violation.
- C. To avoid receiving a denial of participation, the student must complete an assessment and follow the recommendations of any evaluation or assessment. Completion of all assistance requirements must be within the time schedule established by Intervention Assistance.
- D. The Voluntary referral can be made to the coach, counselor, administration or the substance abuse prevention coordinator.
- E. Voluntary referral cannot be used by student participants as a method to avoid consequences of the Athletic Code of Conduct and must be made within 72 hours of the violation. Voluntary referral must occur prior to any report of violations, and 72 hours prior to a random drug test. Involvement by law enforcement officials negates the option of voluntary referral.
- F. The student may use the option of voluntary referral once in his/her career at Riverdale Middle School or Riverdale High School. Voluntary referral which results in no Prohibition from participation is considered a first violation. Any subsequent violations will be enforced accordingly.
- G. If the student requesting the voluntary referral opportunity does not complete the assessment recommendations by the established time schedule, the violation consequence will be put into effect immediately.

EJECTIONS / SPECTATOR BEHAVIORS

1. ATHLETE EJECTIONS FROM CONTESTS

- A. By adoption of the Ohio High School Athletic Association (O.H.S.A.A.), any student/athlete ejected from an interscholastic contest for unsportsmanlike conduct or a flagrant foul shall be ineligible for contests for the remainder of that day as well as for all contests in that sport until two (2) regular season/tournament contests are played at the same level as the ejection (one contest in football). If the ejection occurs in the last contest of the season, the student/athlete shall be ineligible for the same period of time as stated above in the next sport in which the student/athlete participates. A student/athlete under suspension may not sit on the team bench, enter the locker room, or be affiliated with the team in any way traveling to, during, or traveling after the contest(s).
- B. A student/athlete who has been ejected for unsportsmanlike conduct for the second time shall be suspended for the remainder of the season in that sport. A student who has been ejected for unsportsmanlike conduct for the second time in the season during the last contest shall be ineligible for a period of time/number of contests subject to the discretion of the Commissioner.
- C. The period of ineligibility shall commence during the next sport in which the student participates. It is the responsibility of the local school authorities to ensure that this regulation is enforced. When an ineligible athlete is allowed to participate, forfeiture of the contest is mandatory. This regulation shall apply to all regular season and tournament contests, and shall in no way limit the discretionary authority of the Commissioner as specified in the O.H.S.A.A. Tournament Regulations. In accordance with O.H.S.A.A. Bylaw 8-3-1, the decisions of contest officials are final.

2. UNSPORTING BEHAVIOR AT CONTESTS

- A. No member of any school-sponsored interscholastic athletics squad shall leave the 'playing area' in which a contest is being conducted and enter the spectator area of the facility to engage in any type of conflict – verbal or physical.
- B. If a student-athlete leaves the 'playing area' and enters the spectator area of a facility to so engage a person, the minimum penalties shall be: The student-athlete's privileges to participate in interscholastic athletics shall be revoked and the student-athlete shall be ineligible for the remainder of the school year. (per O.H.S.A.A. – adopted 12/04).

3. SPECTATOR BEHAVIOR

- A. Partisan spectators, by their behaviors and reactions, determine to a large extent the reputation for sportsmanship of their school. Spectators should be reminded, and should keep in mind, that athletes are friendly rivals as members of opposing amateur teams. They are expected to be treated as such. Spectators should be reminded, too, that the contest should be between the teams engaged in the competition and not between their supporters. Inappropriate spectator behaviors:
 - 1. Verbal/physical abuse of officials.
 - 2. Berating players, coaches or other spectators through: Chants, Signs and Cheers

3. Interruption of contest: Throwing objects on playing area, entering playing area, disruptive behaviors.
- B. Suggested disciplinary actions for displaying inappropriate behaviors:
1. Removal from contest.
 2. Conference/hearing with school officials.
 3. Removal from all athletic activities for the current school year.
- C. We believe that each participant should be committed to upholding the ideals of good sportsmanship put forth in this document. It is in this spirit that the suggested disciplinary actions are proposed. We also recognize the importance of communication and cooperation between school officials when incidents of inappropriate behavior arise.

ELIGIBILITY: O.H.S.A.A. & B.O.E. REGULATIONS

1. JR. HIGH ACADEMIC REGULATIONS

- A. A student enrolling in the seventh grade for the first time will be eligible for participation in the first grading period regardless of previous academic achievement.
- B. Starting with the first grading period and thereafter a 7th/8th grade student must be currently enrolled and have been enrolled in the preceding grading period and received passing grades in five classes for those subjects in which the student received grades. (O.H.S.A.A. Policy)
- C. The student must achieve a 1.50 G. P. A. or higher from the preceding grading period to be eligible. (Riverdale B.O.E. Policy)
- D. The student CANNOT have two F's in the preceding grading period. If the student has two F's and still has a 1.50 G. P. A. or higher, the student will be ineligible.
- E. Any student receiving an "I" or "incomplete" would have the "I" averaged as an "F" in determining eligibility.

2. HIGH SCHOOL ACADEMIC REGULATIONS

- A. A student enrolling in the ninth grade for the first time must achieve a 1.50 G. P. A. or higher from the final grading period of their eighth grade year and received passing grades during that grading period in five classes for those subjects in which the student received grades to be eligible for athletic competition. (Riverdale B.O.E./O.H.S.A.A. Policy)
- B. In order to be eligible in grades 9-12, a student must be currently enrolled and must have been enrolled in a minimum of five one-credit courses the preceding grading period. During the preceding grading period, the student must have received passing grades in a minimum of five one-credit courses; physical education does not count as one of the one credit courses. (O.H.S.A.A. Policy)
- C. The student must achieve a 1.50 G. P. A. or higher from the preceding grading period to be eligible. (Riverdale B.O.E. Policy)

- D. The student CANNOT have two F's in the preceding grading period. If the student has two F's and still has a 1.50 G. P. A. or higher, the student will be ineligible.
- E. Any student receiving an "I" or "incomplete" would have the "I" averaged as an "F" in determining eligibility.

3. ADDITIONAL ACADEMIC REGULATIONS

- A. The following conditions will be established for a student who is ineligible for a grading period:
 - 1. The eligibility or ineligibility of a student continues until the start of the fifth (5th) school day of the next grading period, at which time the grades from the immediately preceding grading period become effective. *EXCEPTION:* Eligibility or ineligibility of athletes for the first grading period begins with the start of the fall sports season.
 - 2. An athlete may be permitted to try out for any sport or activity in which the number of participants is restricted by team selection.
 - 3. An athlete can practice with a team or group, during their ineligibility period.
 - 4. However, a student cannot participate in any athletic contest, scrimmage, or in exhibition situations during the period of ineligibility. (O.H.S.A.A. Policy)
 - 5. A student who becomes ineligible in mid-season of a sport or activity can continue to practice with a team or group.

5. AGE & SEMESTER REGULATIONS

- A. Middle School: If a student enrolled in grade 7 or 8 attains the age of (15) before August 1st, the student shall be ineligible to participate in middle school athletics for the commencing school year. However the student would be eligible to participate in high school athletics for a period not to exceed (8) semesters, taken in order of attendance, whether the student participates or not.
- B. High School: If a student enrolled in high school attains the age of (19) before August 1st, the student shall be ineligible to participate in high school athletics for the commencing school year.

6. NON-SCHOLASTIC PARTICIPATION

- A. A student cannot be a member of a non-scholastic team and a member of an O.H.S.A.A. recognized sport team, sponsored by the B.O.E. of the same sport, during the same season.
- B. Other rules governed by the O.H.S.A.A. apply to this participation. It is best advised to check with the athletic department.

EQUIPMENT & UNIFORM POLICY

- A. Uniforms - In several sports, the athlete will be required to purchase a portion of the game uniform, which will become their property.
- B. Equipment - All athletes are responsible for the proper care and security of equipment issued to them. All equipment not returned in good condition at the end of the season will be subject to a financial penalty.
 - 1. All equipment issued to a player is to be worn only at practice or scheduled games or scrimmages involving that particular sport. Exceptions must be approved by the coach (i.e.-jerseys).
 - 2. Before any item is attached, added to, removed from, or worn with a uniform that is issued to an athlete for a specific sport, the athlete must secure permission from the coach. Failure to do so will hold the athlete financially responsible.
 - 3. Each athlete is responsible for all equipment issued. Keep it clean and in the best possible condition. The Riverdale Local School District is not responsible for lost or stolen equipment. It is strongly suggested, athletes use a lock on athletic lockers to avoid theft.
 - 4. All athletic equipment is the property of the Board of Education and the Athletic Department. Therefore, school equipment may not be taken from the school building for the use of any other organization or for personal use. Any exception must be approved by the Activities Director.
 - 5. All equipment issued to an athlete must be returned at the end of the school season. Equipment that is not returned for any reason, or is damaged beyond normal wear and tear, must be paid for at **REPLACEMENT** cost. Replacement costs are extremely costly to the student. Many times to replace a single uniform can be 3-4 times the normal cost for ordering by bulk. Equipment is to be returned, or lost equipment paid for, within one week of the last contest of the sport. Any athlete who has not returned or paid for lost equipment will be denied the right to participate in athletics until the equipment is returned or paid for. In addition, the athlete may not receive his/her awards, grade card and/or diploma until this obligation has been met.
 - 6. Under certain circumstances, equipment (i.e.-uniforms) can be sold to team members at the end of the season. This sale will be controlled by the head coach and Activities Director. The price will be set by the Activities Director and will be the **REPLACEMENT** cost of the item. The money will be collected by the head coach prior to equipment being given to the athlete.

FINES/FEES

- A. Any athlete owing delinquent fines/fees can be denied tryout/participation privileges until such obligation has been met.
- B. In addition, grade cards and diplomas can be withheld until such obligation has been met.

FUNDRAISING

- A. The Athletic Department is funded through gate receipts collected at athletic contests and has the tremendous task of funding these athletic programs. With all of the expenses the Athletic Department has it makes it necessary for some individual programs to operate fundraisers with the athletes involved. These fundraisers are used to improve the quality of their program, such as; field equipment, instructional equipment, reductions of spirit pack costs to students, reductions of off-season camp/clinic costs to students, etc.

HAZING POLICY

- A. Hazing in athletic activities is prohibited. Hazing is defined as doing any act or coercing another, including the victim, to do any act of initiation toward any student or other organization that causes or creates a substantial risk for causing mental or physical harm to any person.
- B. No student athlete shall plan, encourage, or engage in physical harm to any person. No student athlete shall plan, encourage, or engage in any form of hazing in practices, competition, or performances. Permission, consent, or assumption of risk by an individual subject to hazing does not lessen the prohibition contained in this policy. The student athlete faces denied participation from athletics for violation of this policy.

INSURANCE STATEMENT

- A. Students participating in the athletic program must be protected by an accident insurance policy in one of the following ways: school insurance, or a school insurance waiver form signed by the parents stating that they have adequate insurance coverage.
- B. The O.H.S.A.A. has purchased a lifetime catastrophic insurance plan that will cover any athlete who is injured to the extent of, or more than \$25,000 in medical expenses. This is above what accident and health insurance carried by the family pays above \$25,000.

LEAGUE INFORMATION

1. BLANCHARD VALLEY CONFERENCE SCHOOLS:

<u>SCHOOLS</u>	<u>NICKNAMES</u>
ARCADIA	REDSKINS
ARLINGTON	RED DEVILS
CORY-RAWSON	HORNETS
LEIPSIC	VIKINGS
LIBERTY-BENTON	EAGLES
McCOMB	PANTHERS
NORTH BALTIMORE	TIGERS
PANDORA-GILBOA	ROCKETS
RIVERDALE	FALCONS
VAN BUREN	BLACK KNIGHTS
VANLUE	WILDCATS

2. BVC SPORTS:

BASEBALL	BASKETBALL	CROSS COUNTRY
FOOTBALL	GOLF	SOFTBALL
TRACK	VOLLEYBALL	WRESTLING

3. OTHER SPORTS:

SOCCER (NCOSA)

ADDRESSES TO SCHOOLS IN THE BVC

Below are the addresses to plug into your GPS to get to our member schools.

- 1. Arcadia:** 19033 State Route 12, Arcadia 44804
- 2. Arlington:** 336 South Main Street, Arlington 45814
- 3. Cory-Rawson:** 3930 County Road 26, Rawson 45881
- 4. Leipsic:** 232 Oak Street, Leipsic 45856
- 5. Liberty-Benton:** 9190 County Road 9, Findlay 45840
- 6. McComb:** 328 South Todd Street, McComb 45858
- 7. North Baltimore:** 2012 Tiger Drive, North Baltimore 45872
- 8. Pandora-Gilboa:** 410 Rocket Ridge, Pandora 45877
- 9. Van Buren:** 217 South Main Street, Van Buren 45889
- 10. Vanlue:** 301 South East Street, Vanlue 45890

LOCKER POLICY

- Lockers - Section 3313.20 of the Ohio Revised Code authorizes a Board of Education to adopt a policy, which authorizes a principal to search any student's locker, and the contents thereof, upon reasonable suspicion that the contents contain evidence of a criminal or school rule violation. Lockers remain the property of the Riverdale Local School District while on loan to students; and are, therefore, subject to supervision and inspection by school authorities when and where necessary. It is the student's responsibility to use lockers for school purposes only.
- Lockers are not to be used for articles, which may be of such nature as to be harmful, dangerous, in violation of school or legal restrictions, or disruptive to the school process. Such articles are subject to confiscation. Students are not permitted to mark or deface lockers. In such cases, the students breaking locker rules will be assessed a fine.

PARTICIPATION FORMS POLICY

- A. Before beginning conditioning, practice or tryouts, each athlete must have on file in the office of the Athletic Director a completed Physical Card, Emergency Medical Form, Insurance Waiver, and signed Athletic Code of Conduct Informed Consent Agreement.
- B. If an athlete is attending a Summer Camp, they may be required to complete the aforementioned forms prior to camp.

PHILOSOPHY - STATEMENT OF RIVERDALE LOCAL SCHOOLS

- A. The Riverdale Local Schools Athletic Program should provide a variety of experiences to aid in the development of favorable habits and attitudes in students that will prepare them for adult life in a democratic society.
- B. The interscholastic athletic program shall be conducted in accordance with existing Board of Education policies, rules, and regulations. While the Board of Education takes great pride in doing your best and winning, it does not condone “winning at any cost!” The Board discourages any and all pressures, which might tend to neglect good sportsmanship and good mental health. At all times the athletic program must be conducted in such a way so as to justify it as an educational activity.
 - 1. GOAL - The student athlete shall become a more effective citizen in a democratic society.
 - 2. SPECIFIC OBJECTIVES - The student athlete shall learn teamwork. To work with others in a democratic society, a person must develop self-discipline, respect for authority, and the spirit of hard work and sacrifice. Athletes must place the team and its objectives higher than personal desires.
 - a. To have fun - The main reason people participate in sports and games.
 - b. To be successful - Our society is very competitive. We do not always win, but we succeed when we continually strive to do our best and strive to win. You can learn to accept defeat only by striving to win with earnest dedication. Develop a desire to excel.
 - c. Sportsmanship - To accept success and defeat like a true sportsman, knowing you have done your best. We must learn to treat others, as we would have others treat us. We need to develop desirable social traits, including emotional control, honesty, cooperation, and dependability.
 - d. To improve - Continual improvement is essential to good citizenship. As an athlete, you must establish a goal and constantly try to reach that goal. Try to better yourself in the skills involved and in those characteristics set forth as being desirable. Enjoy athletics - It is necessary to acknowledge all of the personal rewards we derive from athletics, and to give sufficiently of ourselves in order to preserve and improve the program.
 - e. To develop desirable personal health habits - To be an active, contributing citizen, it is important to obtain a high degree of physical fitness through exercise and good health habits, and to develop a desire to maintain this level of physical fitness after formal competition has been completed.

RISK OF PARTICIPATION STATEMENT

A. All athletes and parents or guardians must realize the risk of serious injury, permanent disability or death, which may be a result of athletic participation. The Riverdale Local District will use the following safeguards to make every effort to eliminate injury:

1. Maintain a continuing education program for coaches to learn the most up-to-date techniques and skills to be taught in their sport.
2. Instruct all athletes about the dangers of participation in the particular sport.

SOLICITING / SPECIAL EVENTS

1. Every year the department receives requests to solicit funds at an athletic contest. It has been our experience that every request received has been from a hard working, legitimate group of volunteers. Unfortunately, our first priority is to maintain, support and certainly not hinder the fundraising efforts of our own athletic booster groups and programs. Therefore, every organization, whether it is affiliated with the school or not, must receive permission from the Activities Director to solicit funds or operate an activity at an athletic contest.

SPORTSMANSHIP FOR STUDENT-ATHLETES

- A. The Riverdale Local Schools Athletic Department believes that interscholastic competition, involving member schools of the Ohio High School Athletic Association (O.H.S.A.A.), should be governed by the basic principles of good sportsmanship. This document has been prepared to insure that all participants have a common understanding of those basic principles.
- B. We believe that participation and winning are both important concepts. Participation rates are high in the junior high years, but decrease in the high school years as athletics become more competitive. We believe that students should be coached to play to the best of their ability, and to understand that to play well is to play honorably. The promotion of sportsmanship is the obligation of all school personnel (principals, athletic directors and coaches,) and is directed to the behavior of spectators, coaches and players.
1. Respect should be demonstrated for an athletic opponent and for their school at all times. Riverdale should treat visiting teams, and their supporters, as guests, and accord them the consideration all human beings deserve. Visiting schools should respect the property and dignity of their host school and its athletic teams.
 2. Respect should be demonstrated for the officials at all times. Officials must be assumed to be, and accepted as, impartial arbiters, who are trained to do their job and can be expected to do the job to the best of their ability.
 3. Knowledge of, and a proper respect for, the current rules of the contest should guide the behavior of all participants. Rules are essential for a fair contest. Good sportsmanship suggests the importance of conforming to the spirit, as well as the "letter" of the rules.
 4. All participants should strive to maintain self-control at all times. The desire to win should not be accepted as a reason for abandoning rational behavior. All must maintain a proper perspective if the potential educational values of

athletic competition are to be realized.

5. All participants should learn to recognize and appreciate skill in performance, regardless of affiliation. Recognition of the good performance of an opponent is a demonstration of generosity and good will that is encouraged in all member schools. In order for good sportsmanship to prevail, it is essential that all participants understand their individual responsibilities and expected modes of behavior before, during, and after contests.

SPORTSMANSHIP FOR ADULTS

- A. Over the last few years, the Ohio High School Athletic Association has strongly emphasized sportsmanship in athletics. You may have seen their logo “Respect the Game.” We continually emphasize to all our students and student athletes the importance of good sportsmanship. We are asking for your cooperation, and that of the coaches to set the example for good sportsmanship. Unfortunately, the poor behavior of a few reflects badly on all of us.
- B. Coaches, and athletes, are only human, and they make mistakes. Yelling at them doesn’t solve anything and only makes matters worse. Help by doing positive cheering for our teams and not cheering negatively against our opponents. Don’t yell at other players; remember that you don’t like to have your son/daughter yelled at by fans.
- C. The influence of television has convinced some that berating the officials somehow helps the cause. The television commentator tells us that the coach is “working the official.” For the sake of argument, let’s assume that this supposition has merit. Remember that the level of play that is witnessed on television is vastly different than high school. The athletes, coaches, and officials have a different motivation entirely for being there.
- D. At the high school level, the official is the sole authority figure. The official has the power to eject athletes, coaches, fans, and administrators. The notion of “working the official” often times has the opposite effect and the calls seem to mount against you. If you were being treated badly by someone, would you go out of your way to please that person? Most officials work hard to make the contest fair for all concerned, and like athletes, coaches, administrators, and parents, they make mistakes - please give them a break. All of us together can make Riverdale the best sport around. BE A GOOD SPORT!

RIVERDALE HIGH SCHOOL AND MIDDLE SCHOOL ATHLETIC DEPARTMENT POLICY IN REGARDS TO FAN EJECTIONS AND/OR MISCONDUCT BEFORE, DURING AND AFTER CONTESTS

Riverdale fans are expected to follow the Sportsmanship Guidelines at all home and away contests at all levels of competition. Fans who do not follow the guidelines and are ejected from an athletic contest and/or demonstrate misconduct before, during or after a contest will be subject to a suspension* period of seven (7) days. During the seven (7) day suspension period the fan may not attend any contests involving any Riverdale High School or Middle School team or individual competition. The seven (7) day period begins immediately after the infraction occurs and runs seven (7) consecutive days.

The suspended person must attend a mandatory meeting with the Activities Director and the Building Principal within seventy-two (72) hours of the ejection or notification of misconduct. Once the seven (7) day period has ended, the fan may return to attending contests with the stipulation that he/she has met with the Building Principal and the Activities Director.

A second violation of this policy may result in a sixty (60) day suspension with a mandatory meeting with the Principal and Activities Director.

Any further violations may result in a calendar year suspension with a mandatory meeting with the Principal, Activities Director and Superintendent.

- All individual cases will be reviewed on a case by case scenario.
- Suspension occurring at the end of a season and/or has remaining suspended days will carry over into the next athletic season with the remaining suspension beginning with the first scheduled contest at any level.
- Suspensions occurring at the end of the school year will carry over to the next school year beginning with the first scheduled contest at any level.
- Misconduct before, during or after a game may include inappropriate contact with a coach via verbal communication, text messaging or social media (Facebook, Twitter, etc.).

TRANSPORTATION POLICY

- A. The Riverdale Board of Education will provide transportation to and from all athletic contests, unless other arrangements are made prior to the event or activity. All participants will ride the school provided transportation to and from the contest. The parents/guardians may provide transportation home from an athletic event, if they put this request in writing and present it to the office **before the event or to their coach after** the event. Students are only permitted to ride from a contest with **THEIR PARENTS OR GUARDIANS**. Under special circumstances, the AD **may** grant permission for an athlete to ride home with another athlete's parents, **if approved one day prior to that occurrence**. All athletes are expected to ride to and from contests in a school bus.
- B. The time of departure of a team will be communicated to the office, Principal and team members by the AD at least **24 hours before** the trip. Any deviation from the normal procedure will also be announced.
- C. No special arrangements will be considered to accommodate work schedule conflicts with regularly scheduled contests.

OVERNIGHT ATHLETIC TRIPS

- A. Regularly scheduled trips, practices or scrimmages that require teams to stay overnight **MUST** be approved by the Riverdale Board of Education. Teams, coaches or individuals who are invited to participate in the OHSAA tournaments will be permitted overnight privileges if approved by the Superintendent, Principal **and** AD prior to any action or reservations scheduled.

USE OF FACILITIES

- A. No one is to use the gymnasium, weight room, practice fields or the game fields unless the Principal or AD has approved the use and there is planned supervision from a Riverdale staff member or coach. **Notification must be to the Principal PRIOR to use.**

WEIGHT ROOM

- A. The weight room is available for any athlete (grades 7-12) and is located in the Fieldhouse. There is trained supervision after school, Monday thru Thursday, 3:00-4:30 PM.

SUMMER CAMPS

With the increasing number of summer camps for athletes, the following points must be stressed:

1. ALL MONEY collected from participant WILL be turned in to the school treasurer. This money can be used at that coach's discretion towards future purchases
2. At no time should students be told that camp attendance is a pre-requisite for making a team
3. No transportation of any kind will be furnished by Riverdale Board of Education
4. All checks that go through the athletic department are to be made out to Riverdale Schools and **not to individual coaches or parties**
5. School facilities and equipment will NOT be used without the approval of the **AD and Principal**
6. School equipment will NOT be ordered by individual coaches~ this needs to be done through the **AD and Principal.**

WHAT DO WE WANT IN A PLAYER?

We want a player who is willing to make a commitment to being as good as they can be each time that they play.

We want a player who is willing and ready to do what has to be done to make a positive contribution in the most difficult of games.

We want a player who competes in each game as though there is nothing they will ever do that will be more important.

We want a player who, more than anything, wants their team to be the very best they can be.

Is that too much for us to demand of you?

Is that too much for you to ask of yourself ?

Bob Knight

Exhibit A

Consent to Perform Urinalysis for Drug Testing

We hereby consent to allow the student named on the front of this form to undergo urinalysis testing for the presence of illicit drugs or banned substances in accordance with the **Policy and Procedure for Random Urine Drug Testing of Riverdale School District Students** as approved by the Riverdale School District Board of Education.

We understand that the collection process will be overseen by a qualified vendor.

We understand that any urine samples will be sent only to a certified medical laboratory for actual testing, and that the samples will be coded to provide confidentiality.

We hereby give our consent to the medical vendor selected by the Riverdale School Board, their laboratory, doctors, employees, or agents, together with any clinic, hospital, or laboratory designated by the selected medical vendor to perform urinalysis testing for the detection of illicit drugs or banned substances.

We further give permission to the medical vendor selected by the Riverdale School Board, its doctors, employees, or agents, to release all results of these tests to the Medical Review Officer (MRO) working for the medical vendor. We understand these results will be forwarded to the Building Principal and will also be made available to us.

We understand that consent pursuant to this **Informed Consent Agreement** will be effective for all activities in which this student might participate during the current school year.

We hereby release the Riverdale School Board of Education, SPORT SAFE Testing Service, Inc. and it's employees from any legal responsibility or liability for the release of such information and records.

READ CODE OF CONDUCT AND EXPECTATIONS ON REVERSE SIDE AND SIGN!

**Exhibit B RIVERDALE SCHOOLS CODE OF CONDUCT AND EXPECTATIONS
INFORMED CONSENT AGREEMENT**

Student Name _____ Grade _____
(Please Print)

AS A STUDENT:

- I understand and agree that participation in athletic or extracurricular activities and parking on school grounds is a privilege that may be withdrawn for violations of the **Code of Conduct and Expectations**, hereinafter **Code of Conduct**.
- I have read the **Code of Conduct** and thoroughly understand the consequences that I will face if I do not honor my commitment to the **Code of Conduct**.
- I understand and realize that there is risk of injury in participating in activities.
- I understand that when I participate in any athletic program, extracurricular activity, and/ or receive a parking permit, I will be subjected to initial and random urine drug testing, and if I refuse, it will be treated as a positive test. I have read the consent on the reverse of this form and agree to its terms.
- I understand this is binding while a student within the Riverdale School District.

Student Signature Date _____

AS A PARENT/GUARDIAN/CUSTODIAN:

- I have read the **Code of Conduct** and understand the responsibilities of my son/daughter/ward as a participant in athletic, extracurricular activities and/or parking privileges in the Riverdale School District.
 - I understand and realize that there is an assumed risk of injury involved for my son/daughter/ward as a participant in activities.
- I understand that my son/daughter/ward, when participating in athletics, extracurricular activities and/or receiving a parking permit, may be subjected to initial and random urine drug testing, and if they refuse, will not be allowed to practice, participate, or park. I have read the consent on the reverse of this form and agree to its terms.
- I understand this is binding while my son/daughter/ward is a student within the Riverdale School District.

Parent/Guardian/Custodian Signature Date _____

Parent/Guardian/Custodian Name (print) Home Phone Work Phone

**RIVERDALE
ATHLETIC CODE OF CONDUCT AGREEMENT**

As a member of the Riverdale Athletic Program, I _____,
agree to abide by the policies set forth by the Riverdale Student-Athlete Handbook,
the Riverdale Student Handbook and the rules set forth by the coach/advisor in
season.

Participant's signature

Date

I have read and understand that I am to conduct myself in accordance with the
Spectator Expectations set forth in the Riverdale Student- Athlete Handbook.
Failure to conduct myself in an adult manner consistent with these expectations
may result in my not being able to attend school sponsored events or may cause
my child's removal from the team/squad.

Parent/guardian signature

Date

RIVERDALE LOCAL SCHOOLS

**ATHLETIC IDENTIFICATION OF INSURANCE
AND
PARENTAL ACKNOWLEDGMENT FORM**

All students involved in the interscholastic athletic programs at Riverdale Local Schools are responsible for their own insurance coverage. Please note below which applies to you:

Covered by Group Insurance: _____

Group # : _____

PARENTAL ACKNOWLEDGMENT

I / We acknowledge that by participating in these sports _____
My / Our child will be exposed to the risk of, including but not limited to, sprains, fractures and ligament and/or cartilage damage which could result in a temporary or permanent, partial or complete impairment in the use of limbs; brain damage; paralysis; or even death. Having acknowledged the risks stated, participation is still desired, and the undersigned freely gives consent to participation in the above sport / sports (including practice sessions and travel to and from athletic contests) with full knowledge and understanding of the risk of serious injury, which exists in participation of this sport / sports. The undersigned agree to assume all of the risk and responsibility involving participation in this activity or any other activities related thereto. The undersigned also agree to emergency medical treatment as deemed necessary by the physicians and trainers designated by school authorities.

Signature of Student

Signature of Parent / Guardian

Date Signed

Date Signed