

Homework Menu Week of 4/29-5/3

*Homework is assigned **Monday** and due **Friday**

Name: _____

Date: _____

***Pick one assignment from each subject to complete throughout the week. Have a parent initial the box for the assignment that you have completed. To show what you have completed, please send a picture, a sample of your work or another type of evidence.

<u>MATH</u>	Math project-Plant and Measure! (this project will take place over the next 2/3 weeks if you choose to complete it)	Math Game-Got It! game	Review Worksheet-pgs. 37-40 (complete at least 2 pages)
<u>LANGUAGE ARTS</u>	<p>Reading Comprehension- Read the article <i>Extreme Plants</i> and answer the questions:</p> <ul style="list-style-type: none"> -Find the country where where the corpse flower grows on a map or Google Earth. Star or color it in on the map provided. -List the two most interesting facts from the article. -What is a nutrient and how does it help the plant? 	<p>Writing Options-</p> <ul style="list-style-type: none"> #1 You found a magic pencil. What do you do with it? #2 Your pet hamster got out of the cage. What happens next? #3 Explain why we should or shouldn't have school uniforms 	Stamina Challenge- Write down how much you are reading each night.
<u>SPELLING</u>	Play Hangman with your spelling words against a friend or family member	Write your spelling words with white crayon on white paper. Paint with watercolor over them to reveal the words	Try writing your spelling words with your opposite hand (lefties with your right hand and vice versa)



Plant and Measure!



Watching seeds sprout and grow is exciting! For this project you will plant some bean seeds and measure their growth.

Requirements:

- Collect some cotton wool, 2 lima beans and containers to grow them in (use clear plastic cups or soda bottles with the tops cut off so that you can see the roots growing). Soak your beans in water overnight to help them germinate more quickly.
- Stuff some cotton wool into your containers and place one bean seed in each container.
- Water until the cotton wool is damp but not too wet and place the containers on a windowsill or under a light source. Check them daily to see if they need more water.
- Watch for signs of growth. Begin measuring the plants and recording the growth when they first appear.
- Draw pictures, or take photographs, of the plants every 2-3 days. Label each picture with the measurements and parts of the plant as they develop.
- Compare the growth of the two bean plants and make comparisons. Which is taller? How much taller?

Present your project in a neat and creative way!

Bring your project to school to share on: _____

GOT IT!

GOT IT is an adding game for two players.

Start with the GOT IT target 23. The first player chooses a whole number from 1 to 5. Players take turns to add a whole number from 1 to 5 to the running total. The player who hits the target of 23 wins the game.

Play the game several times. Can you find a winning strategy? Can you always win? Does your strategy depend on whether or not you go first?

To change the game, choose a new GOT IT target or a new range of numbers to add on. Test out the strategy you found earlier. Does it need adapting? Can you work out a winning strategy for any target? Can you work out a winning strategy for any range of numbers? Is it best to start the game? Always?

Extensions:

Can you play without writing anything down?

Consider playing the game where a player CANNOT add the same number as that used previously by the opponent.

GOT IT is an adding game for two players.

Start with the **GOT IT** target 23. The first player chooses a whole number from 1 to 5. Players take turns to add a whole number from 1 to 5 to the running total. The player who hits the target of 23 wins the game.

1. Play the game several times.

- Can you find a winning strategy? _____
- Can you always win? _____
- Does your strategy depend on whether or not you go first? _____

2. Change the game by choosing a new GOT IT target. Test out the strategy you found earlier.

- Does it need adapting? _____
- Can you work out a winning strategy for any target? _____
- Is it best to start the game? _____ Always? _____

3. Change the game again by returning to a target of 23, but use a different range of numbers this time. Test out the strategy you found earlier.

- Does it need adapting? _____
- Can you work out a winning strategy for any range of numbers? _____
- Is it best to start the game? _____ Always? _____

4. Can you work out a winning strategy for any target and any range of numbers?

Extensions:

Can you play without writing anything down?

Consider playing the game where a player **CANNOT** add the same number as that used previously by the opponent.

Name: _____

Date: _____

Lesson 4 Subtraction with Regrouping in Hundreds, Tens, and Ones

Regroup.

Then subtract.

1. $461 - 179 = ?$

$461 - 179$

= 4 hundreds 6 tens 1 one

- 1 hundred 7 tens 9 ones

$$\begin{array}{r} 461 \\ - 179 \\ \hline \end{array}$$

= 3 hundreds _____ tens 11 ones - 1 hundred 7 tens 9 ones

= _____ hundreds _____ tens _____ ones

= _____

$461 - 179 =$ _____

Check.

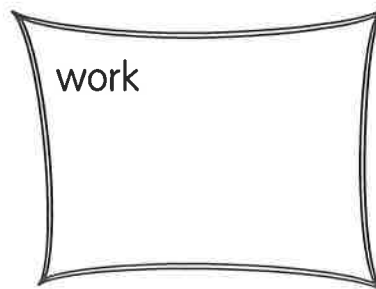
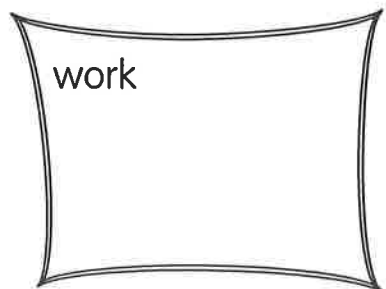
$$\begin{array}{r} + 179 \\ \hline 461 \end{array}$$

2.
$$\begin{array}{r} 435 \\ - 176 \\ \hline \end{array}$$

3.
$$\begin{array}{r} 614 \\ - 267 \\ \hline \end{array}$$

4. $571 - 108 =$ _____

5. $735 - 257 =$ _____



Name: _____

Date: _____

Solve.

6. Lara makes 430 glasses of juice for a school fair.
She makes 145 glasses of apple juice.
The rest are glasses of orange juice.
How many glasses of orange juice does Lara make?

Lara makes _____ glasses of orange juice.

7. Emily has 245 books in her library.
She gives 187 books to her cousin.
How many books are left in Emily's library?

There are _____ books left in Emily's library.



Name: _____

Date: _____

Lesson 5 Subtraction Across Zeros

Regroup.

Then subtract.

1. $400 - 283 = ?$

400 = 4 hundreds

= 3 hundreds _____ tens

= 3 hundreds _____ tens _____ ones

$400 - 283 =$ _____

$$\begin{array}{r} 400 \\ - 283 \\ \hline \end{array}$$

Check.

$$\begin{array}{r} + 283 \\ \hline 400 \end{array}$$

2.
$$\begin{array}{r} 500 \\ - 346 \\ \hline \end{array}$$

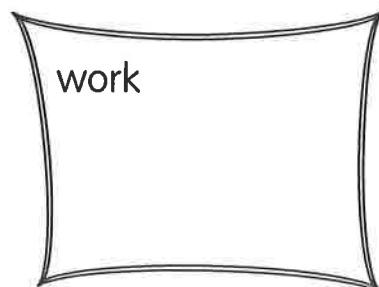
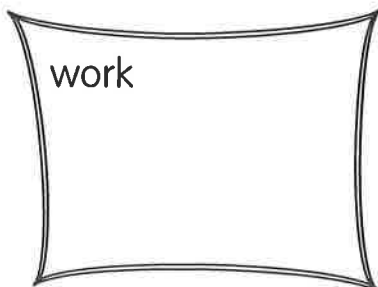
3.
$$\begin{array}{r} 300 \\ - 176 \\ \hline \end{array}$$

4.
$$\begin{array}{r} 600 \\ - 195 \\ \hline \end{array}$$

5.
$$\begin{array}{r} 700 \\ - 365 \\ \hline \end{array}$$

6. $800 - 348 =$ _____

7. $900 - 609 =$ _____



Name: _____

Date: _____

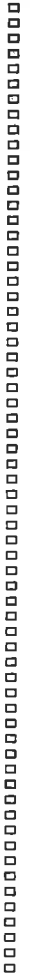
Solve.

8. A farmer has 400 apples and 378 oranges.
How many more apples than oranges does he have?

He has _____ more apples than oranges.

9. There are 800 men at a soccer match.
There are 168 fewer women than men.
How many women are there at the soccer match?

There are _____ women at the soccer match.







Wildlife

LIFE SCIENCE

As you read, think about how the plants in the story are alike and different.

PLANTS

Poisonous seeds, stinky flowers, and shoots that grow so fast you can see it happen—these plants live by extremes.

By Lynn Brunelle

Killer Seeds

Pink flowers grow along the banks of a river.
A wind blows. Seeds fall to the ground.
They are castor bean seeds.

A hungry bird walks by. The seeds shine
in the sunlight. But the bird will not eat
these seeds. It knows they can kill.

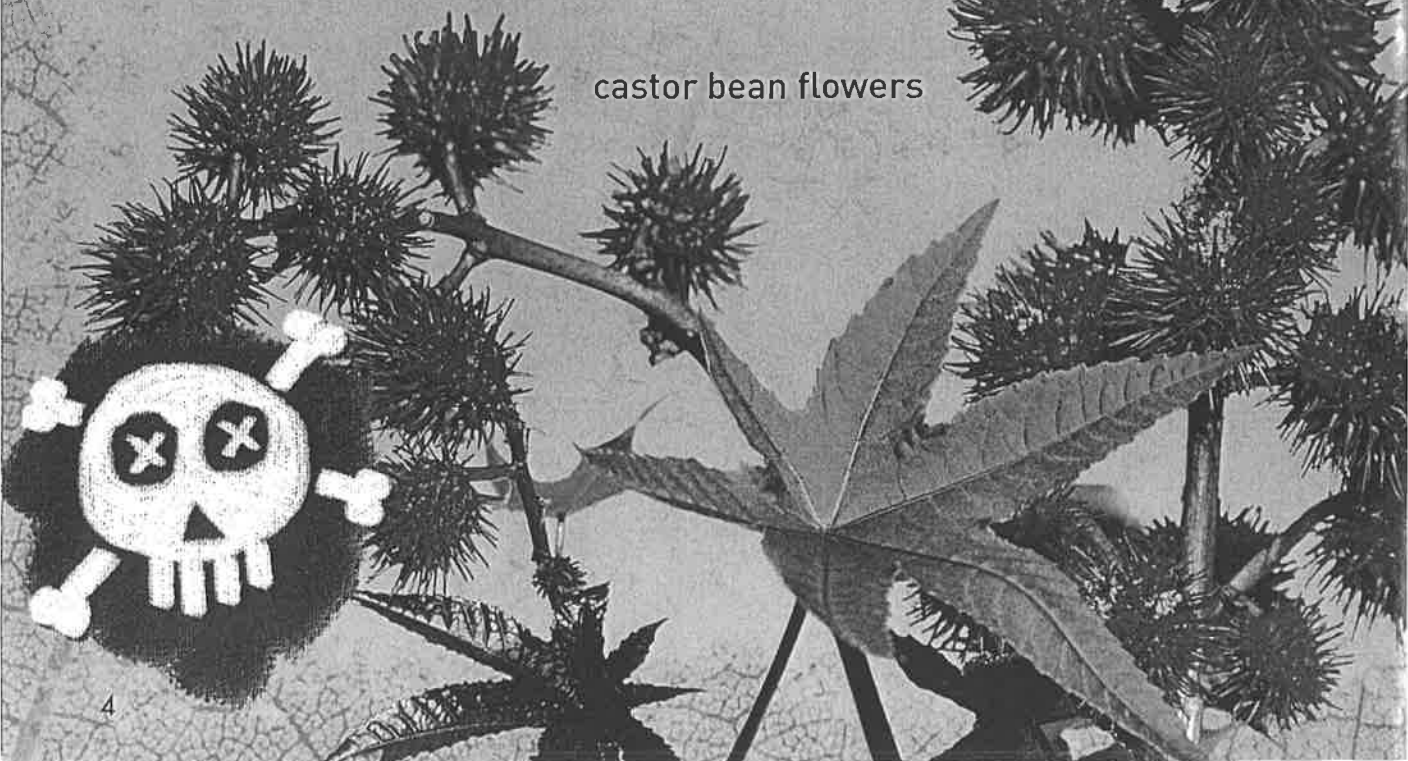
Castor bean plants came from Africa.
Now they are grown in gardens around
the world. The plant is beautiful.
But, it is dangerous.

The seeds contain a deadly **poison**. A
handful of seeds can kill a person. The plant
needs this poison. It protects the seeds
from being eaten by animals.

Castor beans
are poisonous.



castor bean flowers



Big Stink

A rare flower is about to **bloom**. It lives in a rain forest. It has been growing for nine years.

The inside of the flower is red. But it's the smell that you notice. The corpse flower smells like dirty diapers and garbage.

To some insects, this bad smell is good news. It means a free meal. Insects land on the flower. Then they **pollinate** the flower as they search for food.

The corpse flower grows in the country of Indonesia on the island of Sumatra.



The Need for Speed

A fly sees a red leaf. It lands on it.

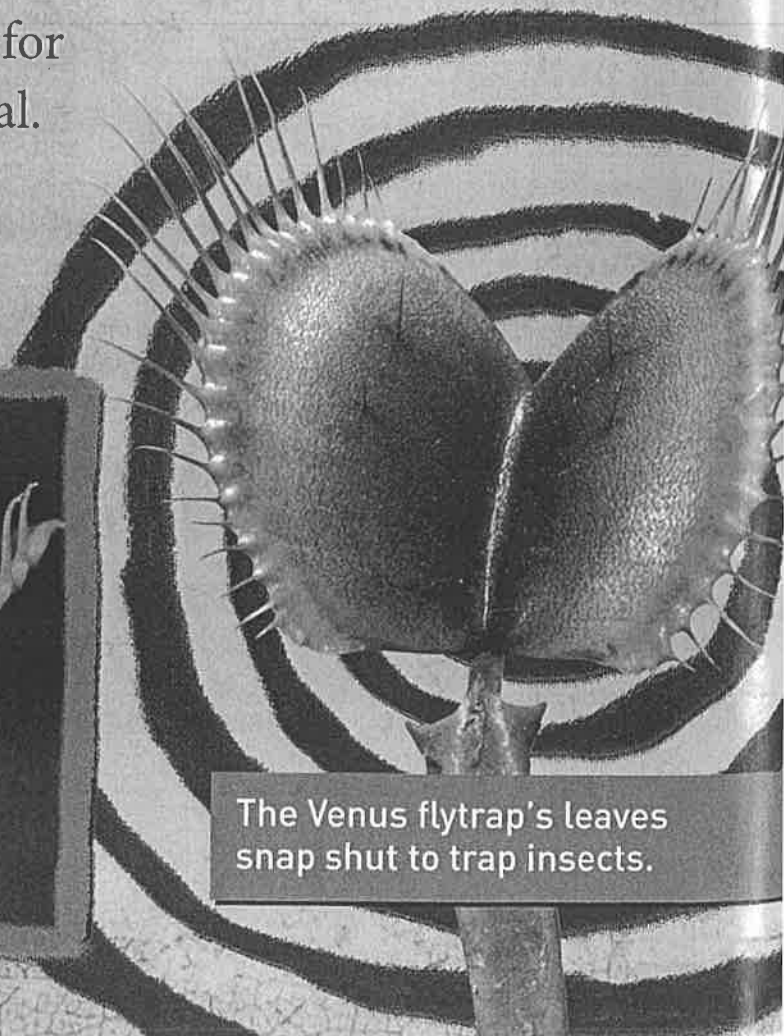
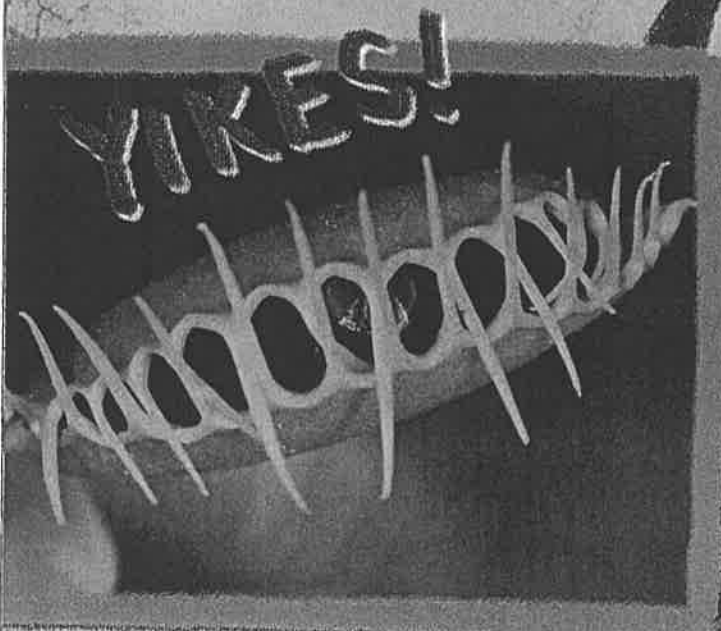
The leaf feels sticky. It has two parts that fold together. *Snap!*

The leaf snaps shut like a mouth. It's fast!

The edges of the leaf are like a fence. The fly is trapped. It has been caught by a Venus flytrap. The fly will be eaten!

Most plants get **nutrients** from the soil and air. But Venus flytraps live in poor soil. They can't get what they need from the soil. So, they soak up nutrients from bugs.

It can take up to 12 days for the plant to finish its meal. Then it's ready for more!



The Venus flytrap's leaves snap shut to trap insects.



WORDWISE

bloom: to flower

nutrient: a substance that living things need to live and grow

poison: a substance that can cause injury, sickness, or death when introduced or absorbed

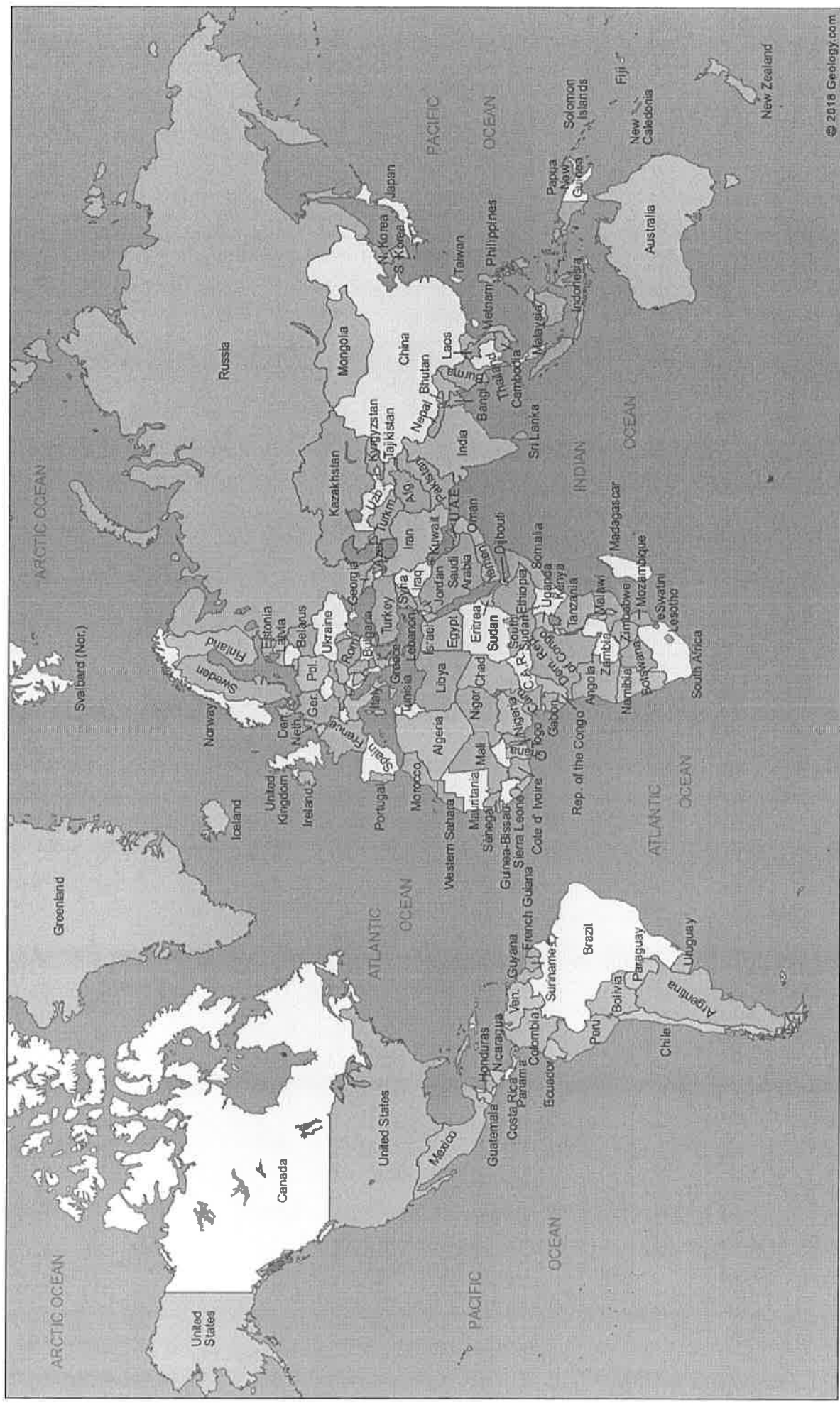
pollinate: to move pollen from one plant to another

You can watch tortoise-shell bamboo grow before your eyes.

Rising Giant

The sun shines down on a bamboo plant. It's about a meter (3 feet) tall. By sunset, this plant will be 1.8 meters (6 feet) tall! It is the tortoise-shell bamboo. It's the fastest growing plant on Earth. It grows so fast, you can watch it grow.

The bamboo is another example of a plant that goes to extremes. Killer seeds, leaves that trap prey, and flowers that smell bad are just a handful of ways plants go to extremes to survive.



<p><u>Spelling Words:</u> Skill: <u>Short e</u> can be spelled with <u>ea</u></p> <p>spread bread head ahead breath sweat ready weather feather health healthy heavy thread instead threat wealthy</p> <p>Challenge words: cumulus humidity precipitation</p> <p>Trick words: even evening ever never</p>	<p><u>Spelling Words:</u> Skill: <u>Short e</u> can be spelled with <u>ea</u></p> <p>spread bread head ahead breath sweat ready weather feather health healthy heavy thread instead threat wealthy</p> <p>Challenge words: cumulus humidity precipitation</p> <p>Trick words: even evening ever never</p>	<p><u>Spelling Words:</u> Skill: <u>Short e</u> can be spelled with <u>ea</u></p> <p>spread bread head ahead breath sweat ready weather feather health healthy heavy thread instead threat wealthy</p> <p>Challenge words: cumulus humidity precipitation</p> <p>Trick words: even evening ever never</p>	<p><u>Spelling Words:</u> Skill: <u>Short e</u> can be spelled with <u>ea</u></p> <p>spread bread head ahead breath sweat ready weather feather health healthy heavy thread instead threat wealthy</p> <p>Challenge words: cumulus humidity precipitation</p> <p>Trick words: even evening ever never</p>
---	---	---	---