

PRESCRIBED UNIFORMS

There are four types of uniforms that may be prescribed for wear: Class A, Class B, ACU (camouflaged field uniform) and Physical Training (PT).

(1) Class A Uniform (Figures 7 and 9).

(a) The Class A uniform consists of the blue/green coat, uniform slacks/trousers, short sleeve green/gray blouse/shirt, neck tab/necktie, cap, shoes, black socks, black web waist belt, name plate, rank, school crest, Honor Star, and all authorized badges, cords, medals, ribbons and tabs.

(b) Female cadets may wear the uniform skirt in lieu of slacks with the Class A uniform. This skirt is not issued, but may be purchased through coordination with the JROTC Department Staff. NOTE: The required hem length is knee length.

(c) The uniform hat is worn for all inspections, parades and reviews, for all leadership labs, and selected other occasions.

(d) A plain white oxford dress shirt and black bow tie worn with the Class A uniform constitute formal attire for appropriate formal activities, such as the Military Ball.

(e) Honor Guard members are issued a yellow belt/sash for the Class A uniform.

(f) A Sam Browne belt and saber may be specified for wear by cadet officers.

(2) Class B Uniform (Figures 8 and 10).

(a) The Class B (green / blue) uniform consists of the short sleeve green/gray blouse/shirt, uniform slacks/trousers, shoes, black socks, black web waist belt, name plate, rank, Honor Star, school crest. All authorized ribbons and tabs as well as badges are optional for wear unless directed for wear.

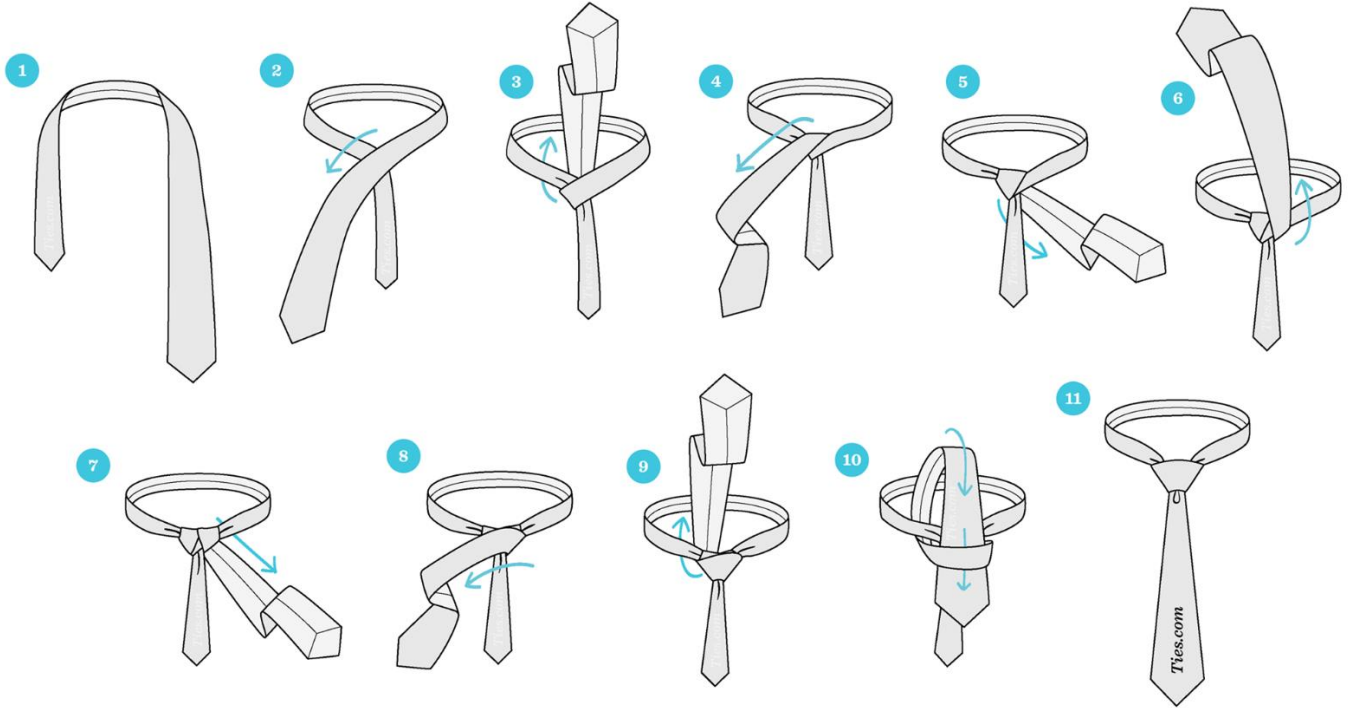
(b) Female cadets may also wear the uniform skirt in lieu of slacks with the Class B uniform.

(c) The Army black sweater with name plate, school crest and rank may be worn with the Class B uniform. This sweater is not issued, but may be purchased through coordination with the JROTC Department Staff. If you do not have the Army sweater, you may wear the uniform CDH sweater in lieu of the Army sweater.

(3) Class C Uniform: The camouflaged Army Combat Uniform (ACU) will be issued to both female and male cadets who attend the JROTC Cadet Leadership Challenge (JCLC). This uniform consists of a coat, pants, cap, T-shirt, belt, socks, boots and insignia.

(4) Physical Fitness (PT) Uniform: Athletic uniforms are not items of issue. Cadets will use their own athletic attire consisting of a sweatshirt or T-shirt, sweat pants or shorts, and non-marking tennis shoes, when this uniform is specified, e.g., Cadet Challenge, organized athletics, dodgeball and physical training.

CCR 145-2 • 1 February 2012
"BUFFALO BATTALION" JROTC Uniform by Cadets

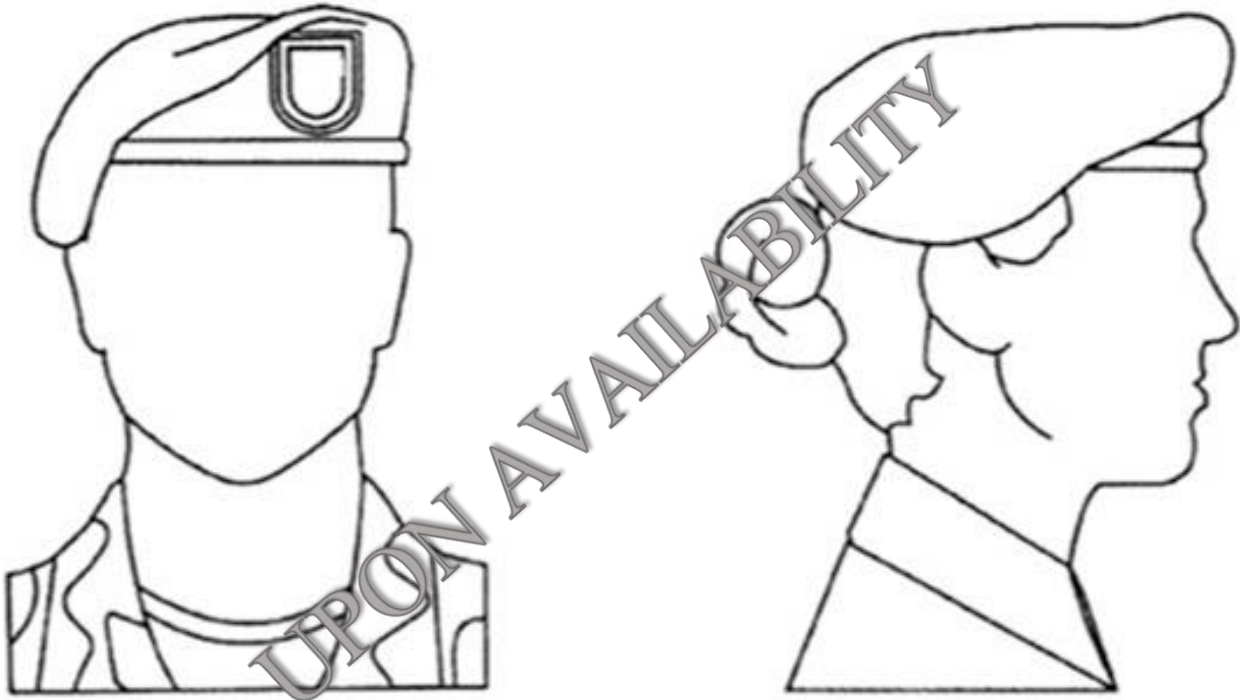


Enlisted Beret



Enlisted Cadet

Gray Beret

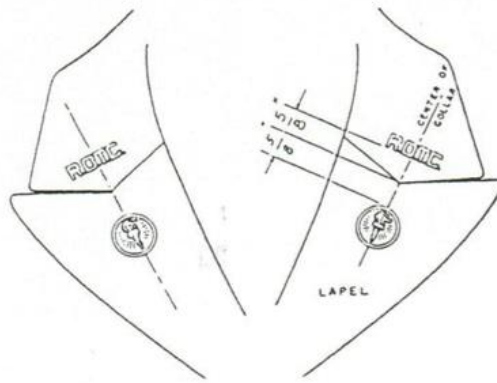


Officer Beret

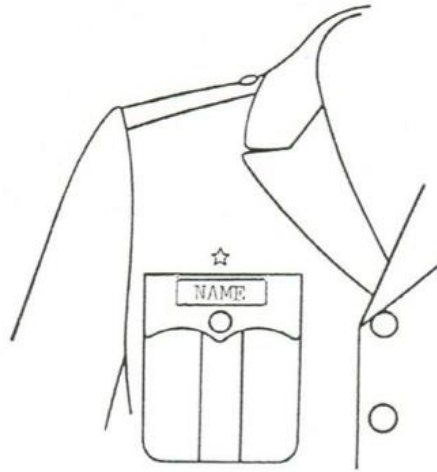


Officer Cadet

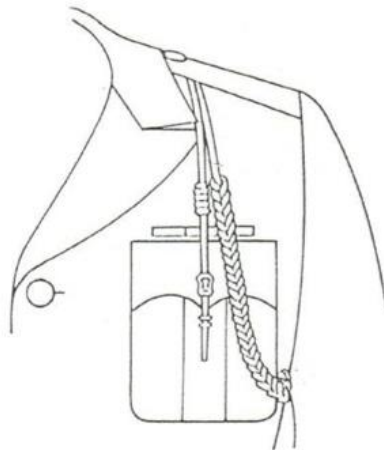
CCR 145-2 • 1 February 2012
"BUFFALO BATTALION" JROTC Uniform by Cadets



Class A Uniform -- Torch of Knowledge (Cadet Officer)
Figure 4

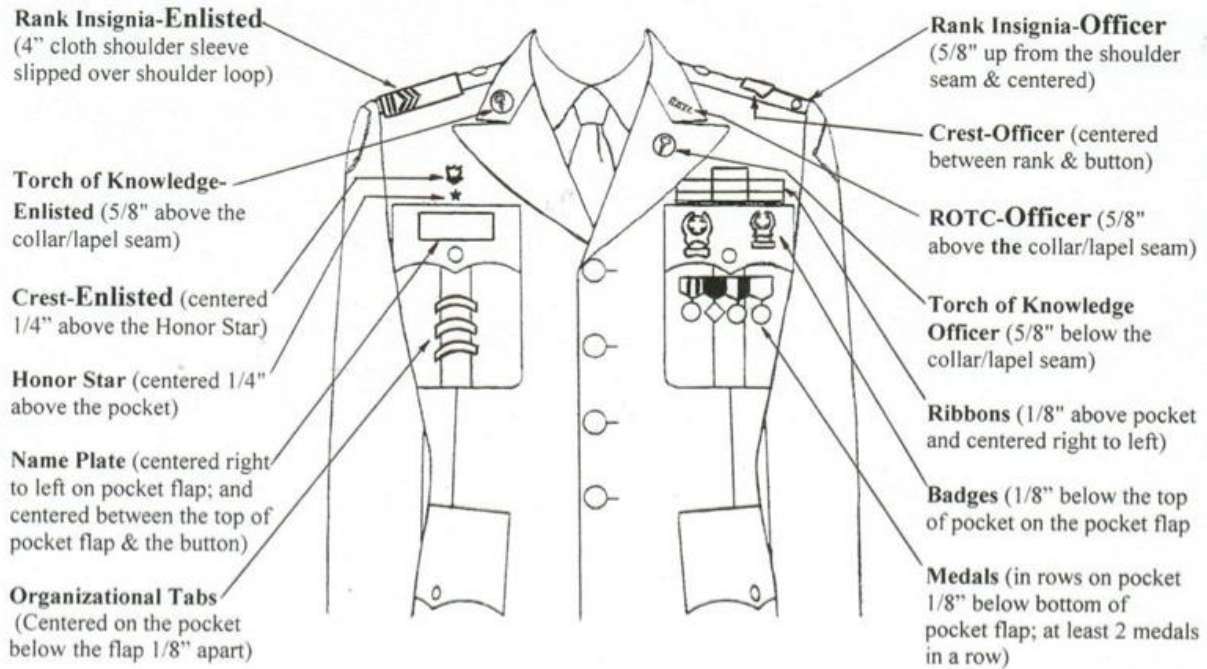


Honor Star and Name Plate
Figure 5

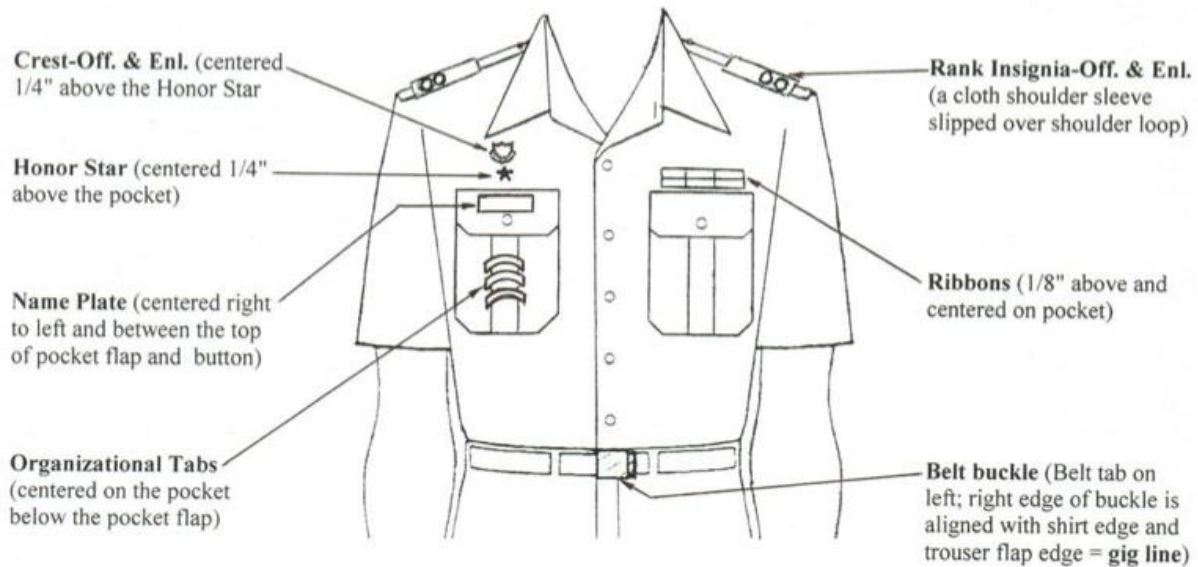


Activities Cord
Figure 6

CCR 145-2 • 1 February 2012
 "BUFFALO BATTALION" JROTC Uniform by Cadets

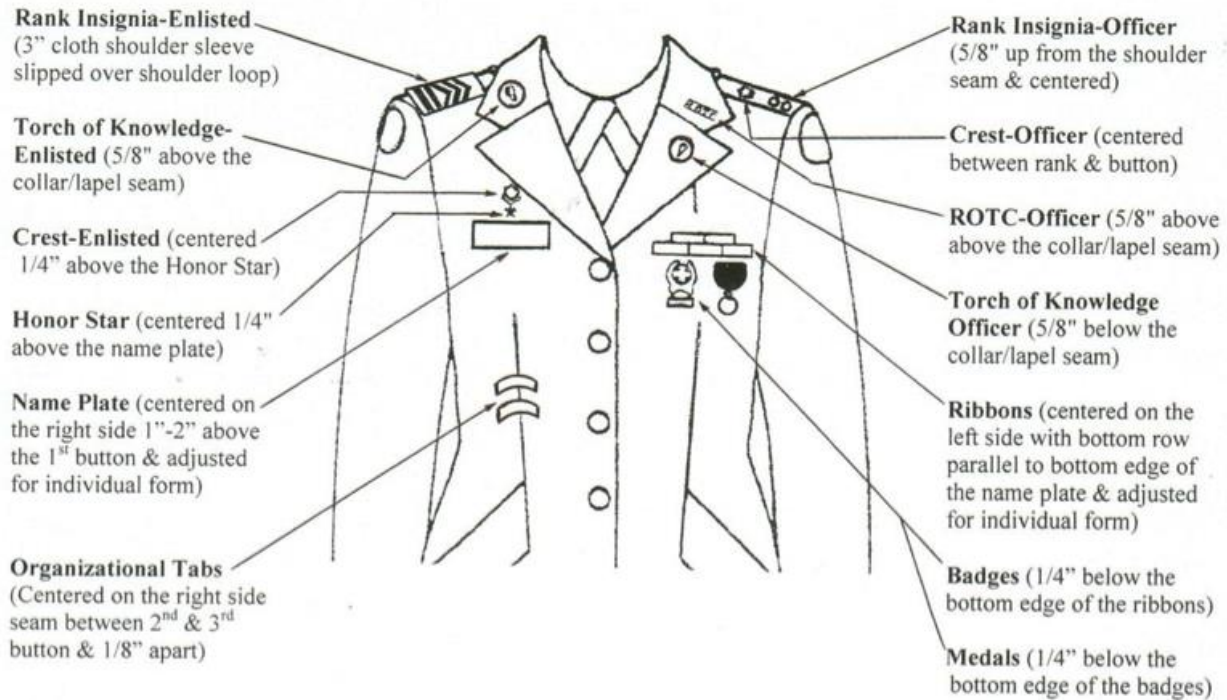


Class A Uniform (Male)
 Figure 7

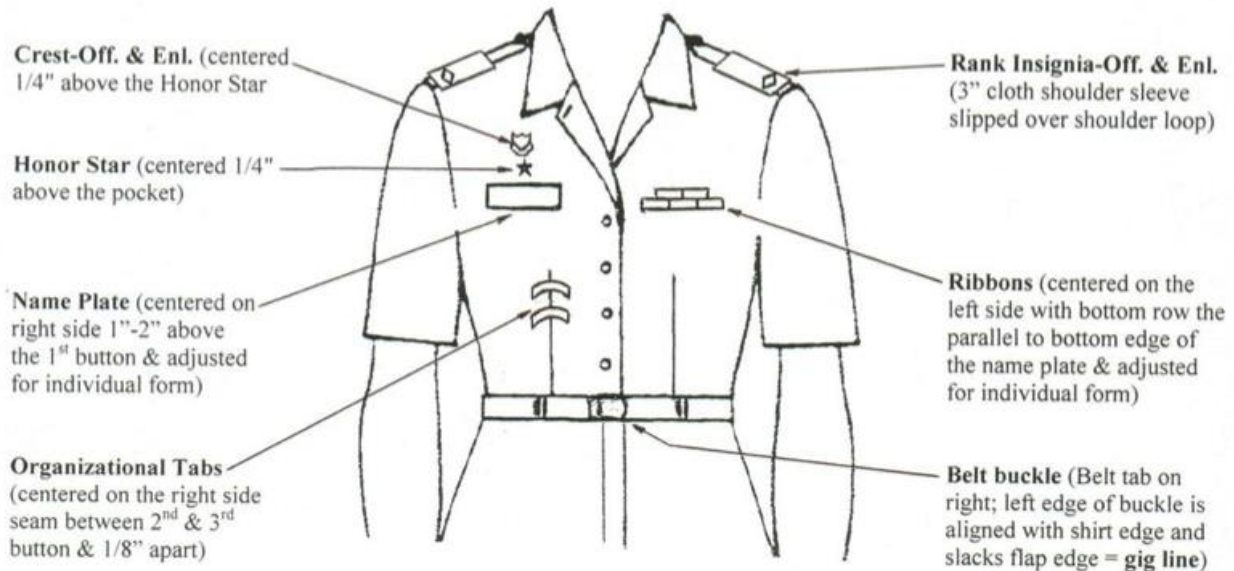


Class B Uniform (Short Sleeve Shirt -- Male)
 Figure 8

CCR 145-2 • 1 February 2012
 "BUFFALO BATTALION" JROTC Uniform by Cadets



Class A Uniform (Female)
 Figure 9



Class B Uniform (Short Sleeve Blouse -- Female)
 Figure 10



Class A (Army Blue) All Cadets

UNIT CREST

(All Cadets)

The Unit Crest will be worn centered 1/4 inch above the HU, HUD, or MU; OR for MALE Cadets 1/4 inch above the right breast pocket and for FEMALE Cadets 1/4 inch above the Nameplate.

HU, HUD, MU INSIGNIA

(All Cadets)

Center the HU, HUD, or MU Insignia 1/4 inch above the right breast pocket on the male uniform and 1/4 inch above the Nameplate on the female uniform. It can be worn by itself or joined by the Academic Achievement Wreath. The Academic Achievement Wreath is centered 1/4 inch above the right breast pocket/Nameplate, with the star centered in the wreath.

SHOES

Boots are not authorized for wear at any time.

(All MALE Cadets)

Male black oxford shoes are authorized for wear.

(All FEMALE Cadets)

Black oxford shoes or black service pumps may be worn. The pump will be plain, with closed toe and heel. The heel will be between 1/2 and 3 inches high.

JROTC INSIGNIA

(ENLISTED FEMALE Cadets)

Place the JROTC Insignia centered on both lapels of the coat, parallel to the inside edge of each lapel; 5/8 inch above the notch.

(ENLISTED MALE Cadets)

1 inch above the notch.

NAMEPLATE

(All FEMALE Cadets)

The Nameplate is worn 1 to 2 inches above the top button of the coat and centered horizontally on the wearer's right side.

SPECIAL TEAM PINS

(All FEMALE Cadets)

When worn, place Special JROTC Team Pins (arcs) parallel to the waistline of the coat. Placement of Team Pins may be adjusted to conform to the individual figure difference. If more than one Team Pin is worn, space them 1/8 inch between each arc.

GRAY BERET

(All Cadets)

The beret is a one piece gray knitted wool shell, bound with leather and a draw cord through the binding. The beret has a gold trim black center flash sewn onto the badge stay. Items that are authorized for wear on the flash are Cadet Officer Rank and the JROTC Cap Insignia with wreath. Officer Rank are centered horizontally on the flash. The JROTC Cap Insignia will be worn by Enlisted Cadets. It is a wreath 1 3/16 inches in height containing the letters "ROTC" on a panel inside the wreath, with gold color metal.

SHOULDER PATCH

NO shoulder patch will be worn on the blue ASU enlisted coat.

ARMY GRAY SHIRT

(All Cadets)

The Army gray long or short sleeve shirt are the only authorized shirts with ASU uniform.

BLACK NECKTIE / NECK TAB

(All Cadets)

The black necktie or neck tab are mandatory while wearing the ASU coat.

PIPING

No piping will be sewn onto the sleeve of the ASU coat.

RANK INSIGNIA

(All ENLISTED Cadets)

Pin-on Grade Insignia are worn only on the epaulets of the ASU coat. Center Rank Insignia on the shoulder loop 5/8 inch from the outside shoulder seam.

RIBBONS

(All FEMALE Cadets)

Center Ribbons on the left side with the bottom row parallel to the bottom edge of the Nameplate. Third and subsequent rows may be aligned to the left to present a better appearance.

Female & Enlisted Cadets





Class A (Army Blue)

Male Cadets & Cadet Officers

ROTC INSIGNIA

(MALE Cadet OFFICERS)

Place the ROTC Insignia 5/8 inch above the notch on both collars, with the centerline of the Insignia bisecting the notch and parallel to the inside edge of the lapel.

(FEMALE Cadet OFFICERS)

Place the ROTC Insignia 5/8 inch up from the collar and lapel seam, with the centerline of the insignia parallel to the inside edge of the lapel.

NAMEPLATE

(All MALE Cadets)

The Nameplate is worn centered left to right on the flap of the right breast pocket, and centered between the top of the button and the top of the pocket.

SPECIAL TEAM PINS

(All MALE Cadets)

When worn, center Special JROTC Team Pins (arcs) between the bottom of the pocket flap and the bottom of the pocket. If more than one Team Pin is worn, space them 1/8 inch between each arc.

RANK INSIGNIA

(All Cadet OFFICERS)

Pin-on Grade Insignia are worn only on the epaulets of the ASU coat. Center Rank Insignia on the shoulder loop 5/8 inch from the outside shoulder seam.

TORCH OF KNOWLEDGE INSIGNIA

(All Cadet OFFICERS)

Center Torch of Knowledge Insignia on both lapels 1 1/4 inches below the ROTC Insignia, with the centerline of the insignia bisecting the ROTC Insignia and parallel to the inside edge of the lapel.

RIBBONS

(All MALE Cadets)

Center Ribbons 1/8 inch above the top of pocket flap. Third and subsequent rows may be aligned to the left to present a better appearance.



Gray beret

Shoulder marks

Black necktie / neck tab
(mandatory with long sleeve shirt, optional with short sleeve shirt)

Army gray long or short sleeve shirt

Black belt with a gold-plated buckle

ASU blue trousers with no braid worn

Black socks

Black low quarter shoes or pumps

Class B (Army Blue)

a. Cadets will wear Class A or B uniforms at least once a week.

(1) **Class A Uniform.** The Class A uniform is generally worn for inspections in the winter. The Class A uniform is also worn during ceremonies, social functions, and formal inspections. The tie or neck tab must be worn with this uniform and all buttons must be buttoned. Underneath the jacket, the Cadet will wear the AG 344 or the AG 415 shirts.

(2) **Class B Uniform.** The Class B uniform is generally worn for inspections in the summer months and in the late spring. The Class B uniform is always worn under the Class A uniform. You do not have to wear a tie or a neck tab with this uniform unless it has long sleeves or with the Class A uniform coat. The placement of awards and ornamentation in the pocket areas is the same as on the Class A uniform.

b. Unless specifically authorized, uniforms will not be worn outside the United States and its territories. The local installation commander will establish guidelines for the wear of uniforms in the DODDS schools.

c. The DAI/SAI publishes guidelines for wearing the uniform. However, a DAI/SAI may not publish guidelines which counter this regulation or that support any activity other than those specifically related to JROTC. The following are considered appropriate occasions to wear the Army uniform.

(1) Leadership laboratory.

(2) When visiting a military installation to participate in military drill or exercises.

(3) Military social functions.

(4) Parades and similar ceremonies.

d. JROTC Cadets are prohibited from wearing the Army uniform in the following situations:

(1) In connection with the furtherance of any political or commercial interests, or when engaged in off-duty civilian employment.

(2) When participating in public speeches, interviews, picket lines, marches, rallies, or public demonstrations, except as authorized by the CG, USACC.

(3) When attending any meeting or event that is a function of, or is sponsored by, an extremist organization.

(4) When wearing the uniform would bring discredit upon the Army.

(5) When specifically prohibited by Army regulations.

11-5. Uniform Appearance

a. Uniforms must present a neat and clean appearance. Loose strings will be cut from the uniform. No jewelry, watch chain, combs, checkbooks, pens, pencils or similar items will appear exposed on

uniforms. The Army uniform will not be mixed with civilian clothing. Bulky items in pockets distract from the uniform. While in uniform, Cadets will not place their hands in their pockets except momentarily to place or retrieve items.

b. Headgear is part of the uniform. Cadets are required to wear the gray berets while outdoors or when carrying air/drill rifles or a saber. The gray berets with a distinctive flash is the only authorized headgear to be worn with the dress uniform.

c. Cadets are approved to wear the following religious headgear with the JROTC uniform: turban, hijab and yarmulke. Headgear will be conservative and subdued in color (black, brown, green, dark or navy blue or a combination of these colors). The headgear cannot bear any writing, symbols or pictures. Cadets may wear approved religious headgear in place of military headgear (e.g., turban and hijab). Standard JROTC headgear will be worn when it can completely cover the religious headgear (e.g., yarmulke). Approved headgear are authorized for wear during all JROTC activities (i.e., drill team, color guard, parades, speaking engagements, etc) that do not pose a risk to the safety of the Cadet, Cadre or others. For example, a Cadet wearing religious headgear can be exempted from certain —Special Hazard Training events that may result in injury to the Cadet or support personnel such as obstacle courses / rappelling etc.

d. To ensure consistency across the JROTC program, exceptions to Cadet uniform policies will be forwarded to and approved by the Commander, USACC on a case-by-case basis. To ensure appropriate compliance with current laws and regulations, the Commander, USACC will forward recommendations for disapproval to the Army G-1 within 30 days of the initial request for final adjudication.

11-6. Personal Appearance

JROTC is a uniformed organization which is judged, in part, by how a Cadet wears a prescribed uniform and maintains their personal appearance. Therefore, a neat and well-groomed appearance by all Cadets is fundamental to JROTC and contributes to building the pride and esprit essential to an effective Corps of Cadets.

a. Hair Styles. Many hairstyles are acceptable, as long as they are neat and conservative. Hair will be neatly groomed. The length and bulk of hair will not be excessive or present a ragged, unkempt, or extreme appearance. Hair will not fall over the eyebrows or extend below the bottom edge of the collar. Lines or designs will not be cut into the hair or scalp. If dyes, tints, or bleaches are used, colors used must be natural to human hair and not present an extreme appearance. Applied hair colors which are prohibited include, but are not limited to, purple, blue, pink, green, orange, bright (fire-engine) red, and fluorescent or neon colors. It is the responsibility of instructors to use good judgment in determining if applied colors are acceptable, based upon the overall effect on Cadets' appearance.

(1) Males. Sideburns will be neatly trimmed. The base will not be flared and will be a clean-shaven, horizontal line. Sideburns will not extend below the lowest part of the exterior ear opening. The face will be clean-shaven, except for permitted mustaches. Males are not authorized to wear braids, cornrows, or dreadlocks (unkempt, twisted, matted, individual parts of hair) while in uniform. Hair that is clipped closely or shaved to the scalp is authorized.

(2) Females. Hairstyles will not interfere with proper wearing of military headgear. Hair holding ornaments (barrettes, pins, clips), if used, must be transparent or similar in color to hair, and will be inconspicuously placed. Beads or similar ornamental items are not authorized. Females may wear braids and cornrows as long as the braided style is conservative and the braids and cornrows lie snugly on the head. Hair will not fall over the eyebrows or extend below the bottom edge of the collar at any time during normal activity or when standing in formation. Long hair that falls naturally below the bottom edge of the collar, to include braids, will be neatly and inconspicuously fastened or pinned, so that no free-hanging hair is visible.

b. Fingernails. Cadets will keep fingernails clean and neatly trimmed so as not to interfere with performance of duty. Females may wear polish that is not exaggerated, faddish, or of extreme coloring (such as purple, gold, blue or white) while in uniform.

c. Hygiene and Tattoos. Cadets are expected to maintain good hygiene while in uniform. Tattoos are authorized except in areas of the body which would cause the tattoo to be exposed while in Class A uniform. Tattoos or brands that are extremist, indecent, sexist, or racist are prohibited, regardless of location on the body, as they are prejudicial to good order and discipline within the unit, the school, and the community.

d. Religious wear.

(1) Cadets may wear religious headgear while in uniform as long as it meets the following criteria.

CCR 145-2 • 1 February 2012
"BUFFALO BATTALION" JROTC Uniform by Cadets

- (a) It must be subdued in color (black, brown, green, dark or navy blue, or a combination of these colors).
- (b) It must be of a style and size that can be completely covered by standard military headgear.
- (c) The headgear cannot bear any writing, symbols, or pictures.

(2) Exceptions to appearance standards based on religious practices.

- (a) The term —religious apparell is defined as articles of clothing worn as part of the observance of the religious faith practiced by the Cadet. Religious articles include, but are not limited to, medallions, small booklets, pictures, or copies of religious symbols or writing carried by the individual in wallets or pockets. Except as noted below, Cadets may not wear religious items if they do not meet the standards of this regulation. Requests for accommodation will not be entertained.
- (b) Cadets may wear religious apparel, articles, or jewelry with the uniform, if they are neat, conservative, and discreet. —Neat conservative, and discreetl is defined as meeting the uniform criteria of this regulation. In other words, when religious jewelry is worn, the uniform must meet the same standards of wear as if the religious jewelry were not worn. For example, a religious item worn on a chain may not be visible when worn with uniforms. The width of chains worn with religious items should be approximately the same size as the width of the ID tag chain.

11-9. Unauthorized Uniforms and Insignia

The following are not authorized for wear with JROTC uniforms or by persons associated with JROTC:

- a. Designs of medals, badges, ribbons, and shoulder cords which conflict with those authorized for wear by the federal or any foreign government.
- b. Insignia consisting of the letters 'U.S.'
- c. Badges or insignia, other than JROTC Marksmanship qualification badges, which resemble badges of other services.
- d. Oak leaf clusters, palms, stars, or similar items that, that resemble federal designs.
- e. JROTC Cadets are not authorized to wear similar colors of the following Total Army units: Special Forces (green); Ranger (tan); Airborne (maroon); and other Soldiers (black) berets. The wear of the above berets is reserved exclusively for units of the Total Army.
- f. Cadets are not authorized to wear the full color US flag insignia.

11-10. Cap Insignia

The JROTC cap insignia is a wreath 1 3/16 inches in height containing the letters 'ROTC' on a panel inside the wreath, with gold color metal.

a. How worn.

- (1) The cap insignia is worn on the service cap centered over the eyelet.
- (2) The insignia is worn centered on the garrison cap left curtain, 1 inch from the front crease.

b. School design. Cap insignia of approved TIOH design will be worn as prescribed by the school official for other than issue-type uniforms.

11-11. Corps and Collar Insignia

The JROTC corps insignia is the Torch of Knowledge (from the Statue of Liberty), radiant with a raised rim on a disc, 5/8 inch diameter, of gold-colored metal. The corps insignia will be worn by all participants on class A and Cadet-type uniforms, and by all participants except Cadet officers on class B uniforms.

a. Placement of insignia on class A uniforms for Cadet officers.

- (1) Male Cadet officer. The ROTC insignia (letters) will be worn 5/8 inch above the notch on both collars with the center line of the insignia bisecting the notch and parallel to the inside edge of the lapel. The Corps insignia should be positioned so that the center line of the insignia bisects the center line of the ROTC insignia and is parallel to the inside edge of the lapel.
- (2) Female Cadet officer. The ROTC insignia will be worn centered on both collars 5/8 inch up from the collar and lapel seam with the centered line of the insignia parallel to the inside edge of the lapel. The Corps insignia will be worn on both lapels 1 1/4 inches below the ROTC insignia, with the insignia bisecting the ROTC insignia and parallel to the inside edge of the lapel.

b. Placement of insignia on class A uniforms for enlisted Cadets. The Corps insignia (discs) are worn centered on both lapels of the coat, parallel to the inside edge of each lapel, and placed so the bottom angle is 1 inch above the notch on the male and 5/8 inch above female lapel.

c. How worn on class B and ACU.

- (1) Class B by Cadet officers. The collar insignia (letters) are worn on the left collar of the outer garment shirt when insignia of grade is worn on the right collar. Grade and collar insignia are centered between the inside and outside edge of the collar and one inch above the lower edge of the collar, with the centerline of the insignia parallel to the lower edge of the collar, bottom of the insignia to the outside. When insignia of grade (shoulder marks) are worn on shoulder epaulets, no insignia is worn on the shirt collar.

CCR 145-2 • 1 February 2012
"BUFFALO BATTALION" JROTC Uniform by Cadets

- (2) Class B by all other Cadets, Corps insignia (discs) are not worn on class B when pin-on insignia of grade are worn on shirt collars or shoulder marks are worn on shoulder epaulets.
- (3) ACU by all Cadets. No Corps collar insignia on ACU.

11-12. Insignia of Grade for Cadet Officers

a. Description. The insignia for Cadet officers consists of silver (white) color on black background, cloth epaulet sleeve with lozenges and discs. The sleeve is 4 inches in length for males and 3 inches in length for females. Cadets may wear disc insignia at the discretion of JROTC instructors.

b. Grades will be indicated on the shoulder epaulet sleeve as follows.

- (1) Cadet Colonel: three lozenges.
- (2) Cadet Lieutenant Colonel: two lozenges.
- (3) Cadet Major: one lozenge.
- (4) Cadet Captain: three discs.
- (5) Cadet First Lieutenant: two discs.
- (6) Cadet Second Lieutenant: one disc.

c. How worn. These grade insignia are worn on both shoulder epaulets of the AG 344 and the Army Shade 415 gray-green shirt. When wearing grade disc insignia, the disc will be centered between the bottom of the button hole and the top of the shoulder seam of the garment. On ACU: Embroidered grade is centered on the hook and loop-face pad of the ACU coat. Multiple-disc grades are worn vertically on the ACU coat, but horizontally on the ACU cap.

11-13. Insignia of Grade for Cadet Noncommissioned Officers and Enlisted Members

a. Description. Insignia is of silver (white) color on black background, cloth shoulder epaulet sleeve with chevrons, bars, and diamond, star or star within wreath, indicating noncommissioned officer grades. The shoulder epaulet sleeve is four inches long for males and three inches long for females. Cadets may wear pin-on insignia of grade at the discretion of JROTC instructors.

b. Grades will be indicated on the shoulder epaulet sleeve as follows.

- (1) Cadet Sergeant Major: three chevrons above three bars with a star within a wreath between the chevrons and bars.
- (2) Cadet Staff Sergeant Major: three chevrons above three bars with a star between the chevrons and bars.
- (3) Cadet First Sergeant: three chevrons above three bars with a diamond between the chevrons and bars.
- (4) Cadet Master Sergeant: three chevrons above three bars.
- (5) Cadet Sergeant First Class: three chevrons above two bars.
- (6) Cadet Staff Sergeant: three chevrons above one bar.

- (7) Cadet Sergeant: three chevrons.
- (8) Cadet Corporal: two chevrons.
- (9) Cadet Private First Class: one chevron above one bar.
- (10) Cadet Private: one chevron.
- (11) Cadet Basic: no insignia of grade.

c. How worn. The shoulder epaulet sleeve is slipped over shoulder epaulet of uniform so that the insignia will be centered on the outer half of both shoulder loops of the coat, overcoat, or shirt when worn as an outer garment. When wearing grade disc insignia, the disc will be centered between the bottom of the button hole and the top of the shoulder seam of the garment. On ACU the embroidered grade is centered on the front hook and loop-face pad of the ACU coat, with chevrons pointed up.

11–14. JROTC and School Shoulder Sleeve Insignia

a. The JROTC shoulder sleeve insignia.

- (1) Description. The shoulder sleeve insignia is a rectangular device 3 5/8 inches in height and 2 1/2 inches in width, consisting of a gray center edged with a 1/8 inch scarlet border at the top and bottom. On this device is a yellow olive wreath surmounted in the vertical center by a yellow torch inflamed. Above the center is a white horizontal scroll inscribed 'U.S. Army' and below the center is a white scroll inscribed 'JROTC' all in scarlet letters 5/16 inch in height. The entire device is within a 1/8 inch scarlet border.
- (2) How worn. It is worn on the upper part of the outer half of the left sleeve of the Army coat and ACU uniform. The top of the insignia will be worn 1/2 inch below the top of the shoulder seam.
- (3) Uniform worn. Issue or Cadet-type uniform.
- (4) JROTC subdued shoulder sleeve insignia. The subdued shoulder sleeve insignia will be worn when wearing the ACU.

b. School shoulder sleeve insignia may be procured at government expense.

- (1) Description. Approved designs that have been submitted to and approved by TIOH, USA.
- (2) How worn. On right sleeve in the corresponding position to the shoulder sleeve of the Army coat and ACU. The top of the insignia will be worn 1/2 inch below the top of the shoulder seam.
- (3) Uniform worn. On issue or Cadet-type uniform.

11–15. Academic Achievement Wreath

Cadets with at least a B average in all subjects and an A average in JROTC are authorized to wear the Academic Achievement Wreath and receive the Academic Achievement, (N-1-3) ribbon. It will be worn on the issue or Cadet-type uniform only during the academic term following the term when the Cadet earned it.

- a. **Description.** This insignia is a gold colored metal wreath 7/8 inch high.
- b. **How worn.** It is worn centered immediately above the right breast pocket on the coat or shirt when worn as an outer garment. If the MU/HU/HUD insignia is worn, the wreath will be pinned so that the star will be worn with the wreath.
- c. **Subsequent awards.** Receipts of subsequent awards are indicated by the appropriate color Lamp Accoutrement affixed to the Academic Achievement, (N-1-3)..

11-16. Merit Unit, Honor Unit, and Honor Unit with Distinction

a. **Description.**

- (1) Merit Unit insignia; a five-pointed star of white enamel on gold-colored metal, 9/16 inches wide.
- (2) Honor Unit insignia; a five-pointed star of blue enamel on gold-colored metal, 9/16 inches wide.
- (3) Honor Unit with Distinction insignia; a five-pointed star of yellow enamel on gold-colored metal, 9/16 inch wide.

b. **How worn.** These insignia are worn centered 1/4 inch above the right breast pocket on the male Army coat and 1/4 inch above the nameplate on the female Army coat. One point of the star is up on the coat or on the shirt when it is worn as an outer garment.

11-17. Placement of Nameplate and Distinguish Unit Insignia

Nameplates must conform to the description below and will be worn on issue uniforms.

a. **Description.** Nameplates will indicate the last name only and will be 1 by 3 inches (may be longer in case of lengthy names) with white block type lettering 1/4 to 3/8 inch high on a jet-black background. (It may have a white edge or border not exceeding 1/32 inch in width).

b. **How worn on male class A uniform.**

- (1) The pocket area on the class B uniform is the same as the pocket area on the class A uniform. The male name plate will be worn on the flap of the right breast pocket. The name plate will be vertically centered between the top of the button and the top of the pocket. Center the name plate horizontally above the button.
- (2) The MU/HU/HUD insignia is worn centered and 1/4 inch above the right pocket. It can be worn by itself or with the Academic Achievement Wreath, in which case the star is still positioned 1/4 inch above the seam. The distinguish unit insignia will be worn centered on the pocket and centered vertically from the bottom of the pocket flap to the bottom seam of the pocket.
- (3) Ribbons are placed 1/8 inch from the top of the pocket. Medals of any kind are to be worn centered on the pocket flap 1/8 inch from the top of the pocket seam.

c. How worn on female class A uniform.

(a) The pocket area on the class B uniform is the same as the pocket area on the class A uniform. The nameplate should be placed 1 to 2 inches above the top button of the coat and centered horizontally on the wearer's right side. The nameplate will be worn in comparable position on the Class B uniform.

(b) The MU/HU/HUD insignia should be centered on the plate 1/4 inch above it. It can be worn by itself or joined by the Academic Achievement Wreath, in which case the star is still positioned 1/4 inch above the nameplate. A ruler or straight edge is a valuable tool when placing these items on the uniform.

(c) Ribbons are to be aligned to the top of the first button spaced 1/8 inch between each row. Badges and medals are placed 1/8 inch below the ribbons.

11-18. Nametape

The JROTC nametape will be:

a. Woven tape of olive green cloth, one inch wide, with the inscription 'JROTC' in black block letters 3/4 inch high.

b. The insignia tape is worn immediately above, and parallel to the top edge of the left breast pocket of temperate, hot-weather, ACU coat; ACU field jackets; and on organizational clothing when required and prescribed by the commander issuing the organizational clothing.

11-19. Optional Items

Distinctive Unit Insignia (DUI), shoulder cords, shoulder sleeve insignia (unit patches), and color trimmings described in this paragraph are optional items.

a. These items may be procured (subject to funding availability) at government expense for schools electing to prescribe their wear or by individuals who are voluntary members of authorized JROTC military organizations. DUI, shoulder cords, shoulder sleeve insignia, and color trimmings will be worn only after specific design, materials, and quality associated with their manufacture have been approved by TIOH.

b. School officials may prescribe the wear of approved DUI. Procurement will be as stated in paragraph (a) above.

c. Insignia of national or local military honor societies, at the option of the SAI, may:

(1) Be substituted for school insignia and worn in accordance with paragraph (b) above.

(2) Approved DUIs will be worn 1/4 inch above the right coat pocket on the male uniform and 1/4 inch above the nameplate on the female uniform. When wearing the

CCR 145-2 • 1 February 2012
“BUFFALO BATTALION” JROTC Uniform by Cadets

Academic Achievement Wreath in place of the DUI, the later will be 1/8 inch higher.
All JROTC and school insignias will be worn on the left coat pocket in similar fashion.

- d. DUI will not be worn on insignia of grade shoulder epaulet sleeves or on the ACU.**
- e. If worn on the class B uniform, the DUI will be worn 1/4 inch above the right chest pocket or 1/8 inch above the unit rating insignia or academic wreath. The location is above the right chest pocket on the male and 1/8 inch above the nameplate on the female uniform in the same fashion.**
- f. Shoulder cords. Shoulder cords may be procured at Government expense (subject to funding availability). Solid, single color, or multi-colored shoulder cords may be designed and authorized to designate a host institution, unit, activity or Cadet position. Shoulder cords must be approved by USACC. No more than one cord may be worn on each shoulder.**
- (1) Shoulder cords will be used to designate participation in integrated-curricular activities including but not limited to:**
- (a) Color guard: white (Cable #65005).**
 - (b) Drill activity: red (Cable #65006).**
 - (c) Musical activity: blue (Cable #70147).**
 - (d) Marksmanship activity: tan (Cable #65015).**
 - (e) Honor organizations, such as national and local honor societies: gold (Cable #70157).**
 - (f) Orienteering activity: green (Cable #70063).**
 - (g) Adventure-type activity: black (Cable #65018).**
 - (h) Honor guard: orange (Cable #65004).**
- (2) Shoulder cords will be awarded only to bona fide team, squad, or other group members, not Cadets participating in training.**
- (3) The above cords may be designated for other purposes at the discretion of the DAI/SAI if a cord is not needed for the designated activity.**
- g. Color trimming made of discs of suitable material, when approved for wear, may be worn beneath Corps insignia. The disc will not exceed a diameter of 1 1/4 inches.**
- h. Special JROTC team pins (arcs) designating various JROTC teams may be worn on the right chest pocket with DAI/SAI approval. If team pins are worn, place the DUI 1/8 inch above the MU/HU/HUD insignia or Academic Achievement Wreath. Team pins approved for wear are color guard, flag detail, drill team, JROTC bands, drum and bugle, academic, rifle team, honor guard, Cadet Challenge, raider team, JCLC, orienteering, and physical training excellence**

Please see the following Youtube Videos for further explanation of male haircuts.

AR 670-1 Male Grooming Standards

https://youtu.be/p_pvpMLYxfc

Please see the following Youtube Videos for further explanation of Female hairstyles.

AR 670-1 Female Grooming Standards

Female Military Hairstyle Instructional Videos:

<https://youtu.be/RisBRI8Alv8>

<https://youtu.be/SfVHi-pGMN0>

CCR 145-2 • 1 February 2012
"BUFFALO BATTALION" JROTC Uniform by Cadets
ACU Uniform Standards



Army JROTC ACU

*Pin-on or Velcro
Rank on Front;
Nametag on Back*

Patrol Cap

*School Name
Nametape
Velcro Backing*

*JROTC Nametape
Velcro Backing*

*JROTC Unit
Patch Velcro
Backing*

*JROTC
Patch
Velcro
Backing*

*Rank Insignia
Velcro Backing
(Rank is worn vertically)*

*Combat Boots
(hot-weather
or temperate-
weather)*





Army JROTC ACU

WEAR OF THE ACU COAT / TROUSERS

- The coat is worn hook and looped, and zipped.
- The coat has hook and loop fasteners for wearing shoulder sleeve insignia, rank, JROTC patch, and school name tape.
- The mandarin collar will be normally worn in the down position.
- Cadets are authorized to wear the mandarin collar in the up position when weather conditions dictate the wear as prescribed by the SAI / AI.
- The coat is normally worn outside the trousers, and the trousers are worn with a belt. The coat may also be worn inside the trousers when directed by the SAI / AI. The coat will not extend below the top of the cargo pocket on the trousers and will not be higher than the bottom of the side pocket on the trousers.
- The elbow pouch with hook and loop closure for internal elbow pad inserts must be closed at all times.
- Sleeves will be worn down at all times, and not rolled or cuffed.
- The moisture wicking tan t-shirt or cotton t-shirt is worn underneath the coat and is tucked inside the trousers at all times.
- Cadets will wear the trousers tucked into the top of the boots or bloused using the drawstrings at the bottom of the trousers. When bloused, the trousers should not extend below the third eyelet from the top of the boot.
- The ACU is meant to fit loosely and comfortably. Alterations to hinder this are not authorized.
- Cadets will wear the ACU in accordance with CCR 145-2.
- Cadets will not wrap the trouser leg around the leg tightly enough to present a pegged appearance or insert any items inside the trouser leg to create a round appearance at the bottom of the trouser leg.

WEAR OF THE ACU HEADGEAR

- The ACU Patrol Cap will be the only headgear worn with the uniform.
- Cadets will wear the ACU Patrol Cap straight on the head so that the cap band creates a straight line around the head, parallel to the ground.
- The Patrol Cap will fit snugly and comfortably around the largest part of the head without distortion or excessive gaps. The cap is worn so that no hair is visible on the forehead beneath the cap. Sew-on or pin-on rank is worn on the ACU Patrol Cap.
- It is recommended that name tags be allowed on the back of the Patrol Cap.

WEAR OF THE DESERT / OPTIONAL BOOTS

- Black boots are NOT authorized for wear with the ACU.
- Army Combat Boots (hot-weather or temperate-weather) are made of tan, rough side out, cattle hide leather, with a plain toe and tan rubber outsoles.
- The boots are laced diagonally with tan laces, with excess lace tucked into the top of the boot under the bloused trousers, or wrapped around the top side of the boot.
- Only boots with tan rubber outsoles are authorized for wear.

THE ACU CARE POLICY

- Wash in cold water and mild detergent, containing no optical brighteners or bleach. Tumble dry at low heat (not to exceed 130 degrees Fahrenheit).
- Remove immediately from the dryer or fold flat or place on a rustproof hanger to ensure heat from the dryer does not set wrinkles.
- To drip dry, remove from the washer/water and place on a rustproof hanger. Do not wring or twist.

NOTE: DO NOT STARCH THE ARMY COMBAT UNIFORM UNDER ANY CIRCUMSTANCES. THE USE OF STARCH, SIZING, AND ANY PROCESS THAT INVOLVES DRY-CLEANING OR A STEAM PRESS WILL ADVERSELY AFFECT THE TREATMENTS AND DURABILITY OF THE UNIFORM, AND IS NOT AUTHORIZED.

ACU MILPER MESSAGE, AMENDMENT TO AR 670-1

Females: If you have long hair here are a couple videos that explain a simple technique for ensuring your hair meets the **standard**.

<https://youtu.be/kXD2Ky0AavQ>

<https://youtu.be/C6AvIStmGVo>

<https://youtu.be/EecMZ8wxAFg>

https://youtu.be/gw_pfHbht1s

[Military Hairstyles for Women](#)