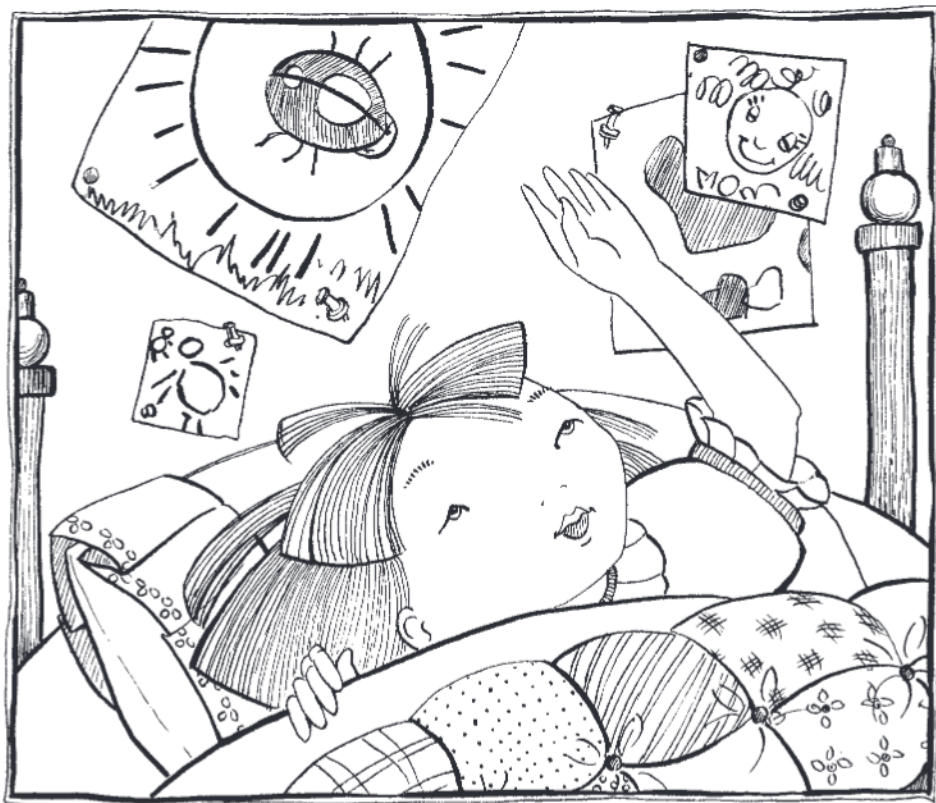


Slug Bug



Written by Susan Oliver

Illustrated by Hala Day




I see a big bug on the sun.

Slug Bug run! Slug Bug fun!

I got you. Now I have **1**.




I see a big bug on my  .

Slug Bug run! Slug Bug fun!

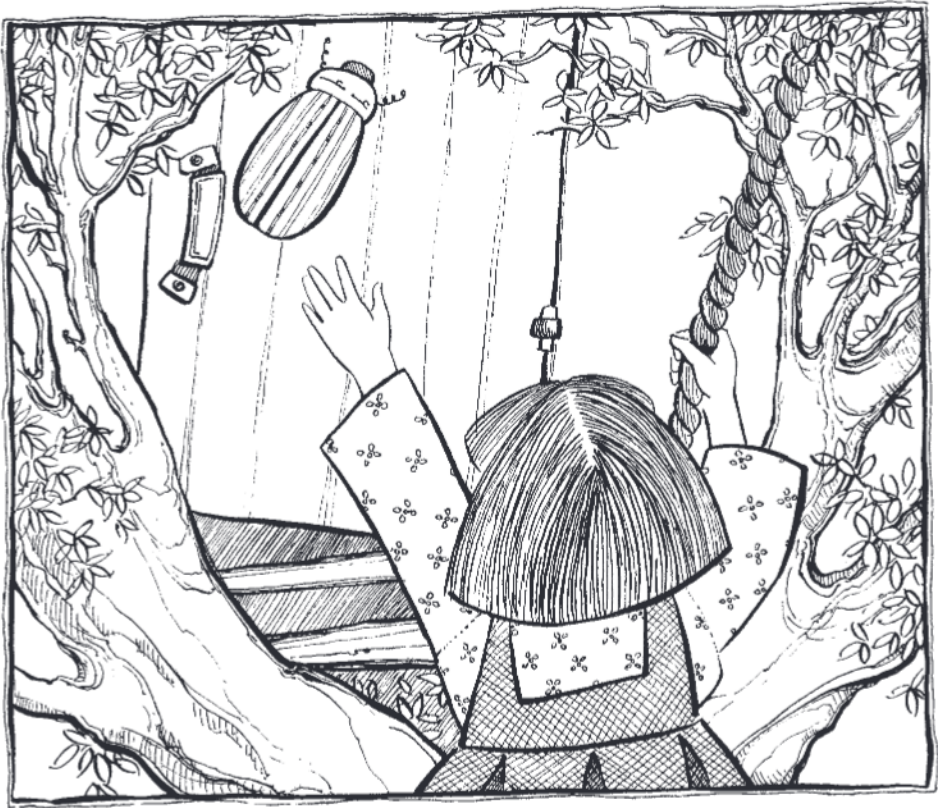
I got you. Now I have **2** .



I see a big bug on the  .

Slug Bug run! Slug Bug fun!

I got you. Now I have **3** .




I see a big bug on my  .

Slug Bug run! Slug Bug fun!

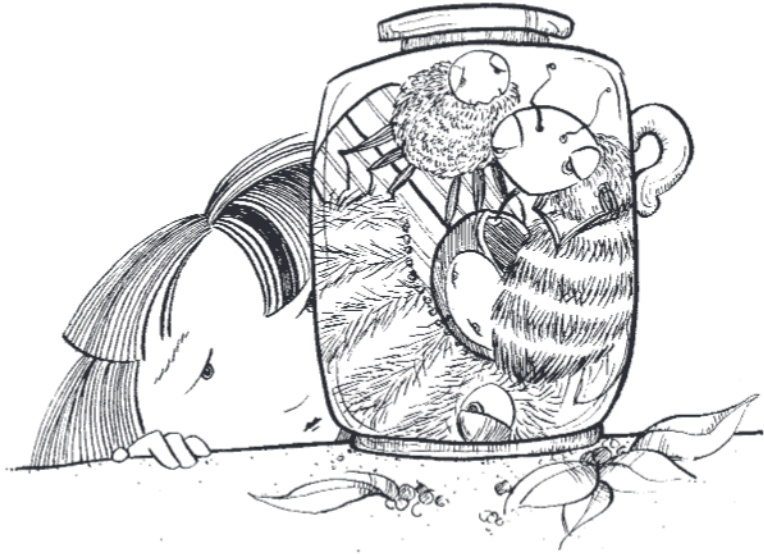
I got you. Now I have  .



I see a big bug on the  .

Slug Bug run! Slug Bug fun!

I got you. Now I have **5** .



I see **5** bugs down in the jug.

The bugs look Slug Bug sad.

The bugs look at me,

but I'm not glad.



Slug Bug run! Slug Bug fun!

Look at the Slug Bugs run, run, run.



What kind of bug have you caught?

VOCABULARY WORDS

jug: a jar that has a handle

and a small opening

PICTURE WORDS



shoe



door



tree



hive

1

one

4

four

2

two

5

five

3

three

PATTERN WORDS

-ug:	bug*	-un:	sun*
	bugs		run
	slug		fun
	jug	-ut:	but

*key word (a main pattern word)

POWER WORDS

(sight words)

now

look

down

Readables are designed to help children learn to read one book at a time systematically from easier to more difficult. Each book's target phonics skills are listed inside the front and back covers.

Copyright © Waterford Institute, Inc.

All rights reserved. No part of this publication may be reproduced, stored in a retrieval system, or transmitted, in any form or by any means, electronic, mechanical, photocopying, recording, or otherwise, without the prior written permission of the publisher.

Published and distributed by Waterford Institute, Inc., Sandy, Utah.

Waterford Institute is a nonprofit research center whose mission is to enable every child to receive the finest education possible by providing high-quality educational models, programs, and software.

Waterford™, Waterford Institute™, Waterford A Nonprofit Research Center™, Light Atom logo®, Rusty and Rosy®, Waterford Early Learning®, Waterford Early Learning logo™, Waterford Early Reading Program®, Waterford Early Reading Program logo®, Waterford Early Math and Science™, Waterford Early Math & Science logo™, Waterford Classroom Advantage™, and Waterford SmartStart™ are trademarks of Waterford Institute, Inc. in the United States and other countries and are used pursuant to a license with Waterford Institute, Inc.

