

# Desert Valley High School

## School Accountability Report Card



### GRADES 10-12

104 West Magnolia Brawley, CA 92227  
Phone: (760) 344-5100 Fax: (760) 344-7425  
Website: [www.brawleyhigh.org](http://www.brawleyhigh.org)

Antonio Munguia, Principal

2010-11 School Accountability Report Card  
Published During the 2011-12 School Year

### Principal's Message

We are proud of Desert Valley High School's role in educating the students of Brawley Union High School District. Some students fall behind in credits or grade point average, have attendance problems, or require a small school and classroom environment. The teachers and staff at Desert Valley are able to provide students the attention and support the students may require at a crucial period in their lives. Students, however, still have to do their part (i.e., pay attention, study, complete homework, behave, and learn).

Desert Valley High School's mission is to provide all students the opportunity to meet graduation requirements, **to create a positive educational atmosphere**, and to model the behaviors needed for students to become responsible citizens in their community. Our mission is driven by a caring and committed staff and with the commitment of our stakeholders in the community.

### Parental Involvement

Desert Valley High School is committed to promoting parent, community, and business partnerships that:

- Involve parents in their child's education.
- Foster shared responsibility among students, parents, and staff.
- Link families with school and community resources.
- Encourage broad-based representation in the decision-making process.

Parent involvement is key in promoting student achievement at Desert Valley High School. Parents are regularly informed of student progress and attendance through telephone conversations, the Principal's Monthly Newsletter, an Individualized Education Program for students with special needs, and notes from teachers, counselors, office staff, and administration. All parents are invited to participate in their student's curricular plan through academic advisement. The counseling department maintains an open door policy for parents to seek information and assistance regarding their students. Parents and other community members sit on the annual Senior Boards for the Senior Portfolio.

Additionally, community meetings are frequently held as a means to inform parents and community members about:

- Senior Portfolio
- School safety
- BUHSD Board meetings
- Financial aid planning
- Accreditation process

For more information on how to become involved, contact Antonio Munguia, Principal, at (760) 312-5110 or [tmunguia@brawleyhigh.org](mailto:tmunguia@brawleyhigh.org).

### School Safety

A revised Comprehensive School Safety Plan was adopted and implemented during the 2007-08 school year. The Safety Committee reviews the plan annually. The School Safety Plan was recently updated in February 2011. The plan includes emergency routes, maps, and emergency procedures such as fire, earthquake, attacks, lockdown, egress and ingress procedures, and other important procedures to keep students and staff safe and secure. The School Safety Plan is available to the community in the main office/principal's office. The Safety Committee meets monthly to monitor implementation of the plan.

### Brawley Union High School District

480 North Imperial Avenue  
Brawley, CA 92227  
Phone: (760) 312-5819  
Fax: (760) 344-9520  
[www.brawleyhigh.org](http://www.brawleyhigh.org)

Dr. Hasmik Danielian  
Superintendent



In accordance with State and federal requirements, the School Accountability Report Card (SARC) is put forth annually by all public schools as a tool for parents and interested parties to stay informed of the school's progress, test scores and achievements.

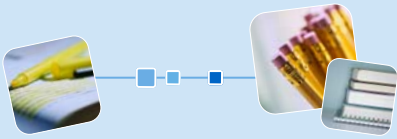


### Vision Statement

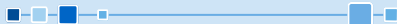
Through a rigorous standards-based curriculum that emphasizes relevance and technology, our vision is to challenge and empower all students to graduate prepared for their post-secondary plans with the ultimate goal of becoming productive citizens in a global economic society.

### District Mission Statement

Our mission is to provide a safe and secure learning environment for all students focusing on student achievement through high quality instructional programs and by providing social development opportunities for students to prepare to become productive citizens. This will be accomplished through a shared commitment between home and schools and community.



*“Desert Valley High School’s mission is to provide all students the opportunity to meet graduation requirements.”*



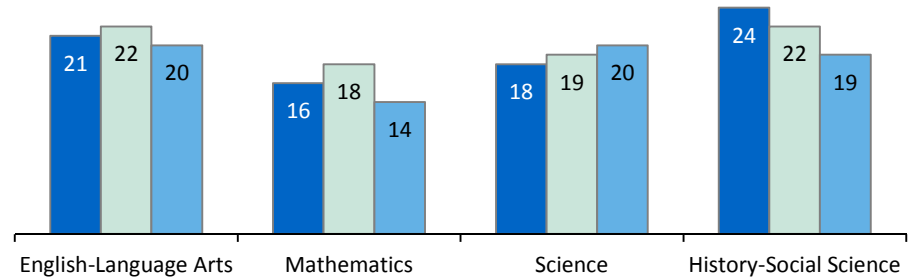
### Student Enrollment by Group

Desert Valley HS	
Socioeconomically Disadvantaged	81.9%
English Learners	45.2%
Students with Disabilities	12.6%

### Class Size

08-09 09-10 10-11

The bar graph displays the three-year data for average class size.

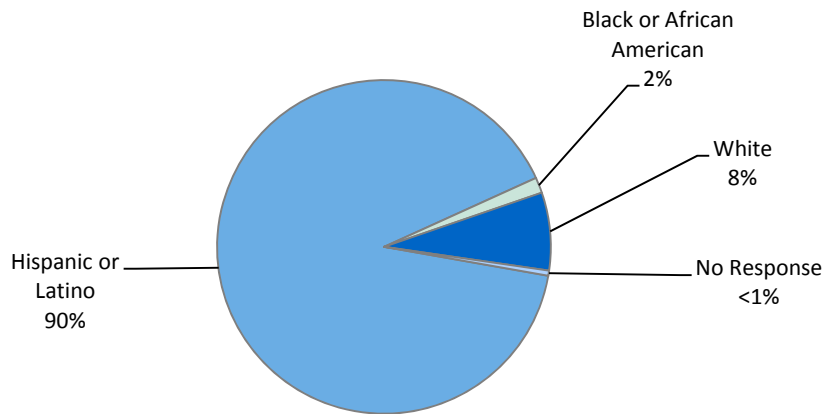


### Class Size Distribution — Number of Classrooms By Size

Subject	08-09			09-10			10-11		
	1-22	23-32	33+	1-22	23-32	33+	1-22	23-32	33+
English-Language Arts	5	8		8	6		10	5	
Mathematics	7			9	1		5		
Science	6	2		6	1		4	2	
History-Social Science		7		6	6		7	5	

### Enrollment and Demographics

The total enrollment at the school was 199 students for the 2010-11 school year.\*



\* Enrollment data was gathered from DataQuest and is accurate as of May 2011.

### School Facility Items Inspected

The table shows the results of the school's most recent inspection using the Facility Inspection Tool (FIT) or equivalent school form. The following is a list of items inspected.

- **Systems:** Gas Systems and Pipes, Sewer, Mechanical Systems (heating, ventilation, and air conditioning)
- **Interior:** Interior Surfaces (floors, ceilings, walls, and window casings)
- **Cleanliness:** Pest/Vermin Control, Overall Cleanliness (school grounds, buildings, rooms, and common areas)
- **Electrical:** Electrical Systems (interior and exterior)
- **Restrooms/Fountains:** Restrooms, Sinks/Drinking Fountains (interior and exterior)
- **Safety:** Fire Safety Equipment, Emergency Systems, Hazardous Materials (interior and exterior)
- **Structural:** Structural Condition, Roofs
- **External:** Windows/Doors/Gates/Fences, Playgrounds/School Grounds

### School Facility Good Repair Status

This inspection determines the school facility's good repair status using ratings of good condition, fair condition, or poor condition. The overall summary of facility conditions uses ratings of exemplary, good, fair, or poor condition. At the time of this school facility inspection, no deficiencies were found.

School Facility Good Repair Status			
Items Inspected	Repair Status	Items Inspected	Repair Status
Systems	Good	Restrooms/Fountains	Good
Interior	Good	Safety	Good
Cleanliness	Good	Structural	Good
Electrical	Good	External	Good
Overall Summary of Facility Conditions			Good
Date of the Most Recent School Site Inspection			08/25/2011
Date of the Most Recent Completion of the Inspection Form			08/25/2011

### School Facilities

The school's facilities, situated on a half acre, opened in 1980 and included ten classrooms, two computer labs, school library, and offices, which are all up-to-date and provide adequate space for students and staff.

**Safety:** The safety of students and staff is a primary concern of Desert Valley High School. All visitors are required to sign in at the school office before entering the campus. School staff constantly monitors school grounds. The school is always in compliance with all laws, rules, and regulations pertaining to hazardous materials and State earthquake standards. The school has a thorough disaster plan and practices fire and earthquake drills on a regular basis.

**Cleaning Process:** A team of custodians and groundskeepers ensure classrooms, restrooms, and campus grounds are cleaned on a daily basis. The District administers a scheduled maintenance program, including regular facilities inspections, to ensure that all classrooms and facilities are well maintained and in good repair. When necessary, the District takes appropriate actions to ensure campus facilities are in good working order and provide a clean and safe environment. At the time of this report, 100% of the student restrooms were in good working order.

**Recent Renovations:** Recent renovations include the addition of two new classrooms to help with the increased enrollment. The campus has also added sidewalks to help with overflow of student traffic. The main buildings all received new roofing in late 2007.

**School Facility Improvements:** A shade structure was added. The structure is 12 feet wide and 35 feet long. The project was funded by a grant received from the Lowe's Corporation.

*Continued on sidebar*

### School Facilities

*Continued from left*

The District participates in the State School Deferred Maintenance Program, which provides state matching funds on a dollar-for-dollar basis, to assist school districts with expenditures for major repair or replacement of existing school building components. Typically, this includes roofing, plumbing, heating, air conditioning, electrical systems, interior or exterior painting, and floor systems. For the 2011-12 school year, the District budgeted \$80,000.00 for the Deferred Maintenance Program. This represents .53% of the District's general fund budget.

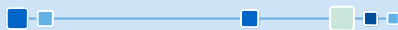
*"We are proud of Desert Valley High School's role in educating the students of Brawley Union High School District."*



### Availability of Textbooks and Instructional Materials

The following lists the percentage of pupils who lack their own assigned textbooks and instructional materials:

Desert Valley HS	
Subject	Percent Lacking
Reading/Language Arts	0%
Mathematics	0%
Science	0%
History-Social Science	0%
Visual and Performing Arts	0%
Foreign Language	0%
Health	0%
Science Laboratory Equipment	0%



### Currency of Textbook Data

This table displays the date when the textbook and instructional materials information was collected and verified.

Desert Valley HS	
Currency of Textbook Information	
Data Collection Date	06/2011

### Textbooks and Instructional Materials

Brawley Union High School District held a Public Hearing on October 13, 2010, and determined the District has sufficient and good quality textbooks, instructional materials, or science lab equipment pursuant to the settlement of *Williams vs. The State of California*. All students, including English learners, are given their own individual Standards-aligned textbooks or instructional materials, or both, in core subjects for use in the classroom and to take home.

Brawley Union High School sets a high priority upon ensuring that sufficient and current textbooks and materials are available to support the school's instructional program. All textbooks and instructional materials used within the District are aligned with the California State Content Standards and Frameworks and have been approved by the Board of Trustees.

Brawley Union High School District follows the State Board of Education's six-year adoption cycle for core content materials and the eight-year cycle for textbook adoptions in foreign language, visual and performing arts, and health. District textbook review and adoption activities occur the year following the State's adoption. In addition to textbooks, students have access to experimental kits, manipulatives, workbooks, audio libraries, films, and videotapes.

Textbooks and Instructional Materials List		
Subject	Textbook	Adopted
English-Language Arts	Pearson (9-12)	2010-11
Mathematics	<i>Algebra I, McDougal Littell (9-12)</i>	2006-07
Mathematics	<i>Algebra II, McDougal Littell (9-12)</i>	2006-07
Mathematics	<i>Geometry, McDougal Littell (9-12)</i>	2006-07
Science	<i>Biology, Pearson/Prentice Hall (9-12)</i>	2007-08
Science	<i>Environmental Science, Holt (9-12)</i>	2007-08
Social Studies	<i>World History, McDougal Littell (10)</i>	2006-07
Social Studies	<i>U.S. History, McDougal Littell (11)</i>	2006-07
Social Studies	<i>Government, Prentice Hall (12)</i>	2006-07

### Quality of Textbooks

The following table outlines the criteria required for choosing the textbooks and instructional materials.

Quality of Textbooks	
	Yes/No
Are the textbooks adopted from the most recent state-approved or local governing board approved list?	Yes
Are the textbooks consistent with the content and cycles of the curriculum frameworks adopted by the State Board of Education?	Yes
Does every student, including English Learners, have access to their own textbooks and instructional materials to use in class and to take home?	Yes

### STAR Results for All Students: Three-Year Comparison

The Standardized Testing and Reporting (STAR) results are evaluated and compared to state standards using the following five performance levels: **Advanced** (*exceeds state standards*); **Proficient** (*meets state standards*); **Basic**; **Below Basic**; and **Far Below Basic**. Students scoring at the Proficient or Advanced level meet state standards in that content area. The tables show the percentage of students that scored at Proficient or Advanced levels in English-language arts, mathematics, science, and history-social science.

Percentage of Students Scoring at Proficient or Advanced Levels

	Desert Valley HS			Brawley UHSD			California		
	08-09	09-10	10-11	08-09	09-10	10-11	08-09	09-10	10-11
English-Language Arts	5%	9%	10%	37%	39%	42%	50%	52%	54%
Mathematics	4%	4%	1%	19%	20%	25%	46%	48%	50%
Science	0%	0%	11%	36%	32%	48%	50%	53%	56%
History-Social Science	9%	7%	6%	34%	35%	40%	41%	44%	48%

### STAR Results by Student Group: English-Language Arts, Mathematics, Science, and History-Social Science

Percentage of Students Scoring at Proficient or Advanced Levels

Group	Spring 2011 Results			
	English-Language Arts	Mathematics	Science	History-Social Science
All Students in the District	42%	25%	48%	40%
All Students at the School	10%	1%	11%	6%
Male	12%	2%	❖	9%
Female	5%	❖	❖	❖
Black or African American	❖	❖	❖	❖
American Indian or Alaska Native	❖	❖	❖	❖
Asian	❖	❖	❖	❖
Filipino	❖	❖	❖	❖
Hispanic or Latino	9%	1%	12%	6%
Native Hawaiian or Pacific Islander	❖	❖	❖	❖
White	❖	❖	❖	❖
Two or More Races	❖	❖	❖	❖
Socioeconomically Disadvantaged	10%	1%	15%	6%
English Learners	❖	❖	❖	❖
Students with Disabilities	❖	❖	❖	❖
Students Receiving Migrant Education Services	8%	8%	❖	7%

❖ Scores are not shown when the number of students tested is 10 or less, either because the number of students tested in this category is too small for statistical accuracy or to protect student privacy.

### Standardized Testing and Reporting Program

The Standardized Testing and Reporting (STAR) Program aims to identify strengths and weaknesses to improve student learning. STAR consists of several key tests that are designed for the student's age and individual needs. These tests include: the California Standards Test (CST), California Modified Assessment (CMA), and California Alternate Performance Assessment (CAPA).

The CSTs are multiple choice tests in English-language arts, mathematics, science, and history-social science for varying grade levels. Some grade levels also participate in an essay writing test. The CSTs are used to determine students' achievement of the California Academic Content Standards. These standards describe the knowledge and skills that students are expected to learn at each grade level and subject.

The CMA is a modified assessment for students with disabilities who have an individualized education program (IEP). It is designed to assess those students whose disabilities prevent them from achieving grade-level proficiency on an assessment of the content standards with or without accommodations.

The CAPA is an alternate assessment for students with significant cognitive disabilities who are unable to take the CST with accommodations or modifications or the CMA with accommodations.

For more information on the STAR program including tests, participation, groups, and scores by grade level, please visit <http://star.cde.ca.gov/>.



## API Testing

Assessment data is reported only for *numerically significant* groups. To be considered numerically significant for the API, the group must have either: (1) at least 50 students with valid STAR Program scores who make up at least 15% of the total valid STAR Program scores, or (2) at least 100 students with valid STAR Program scores.

## API Ranks

Schools are ranked in ten categories of equal size, called deciles, from 1 (lowest) to 10 (highest) based on their API Base reports. A school's "statewide API rank" compares its API to the APIs of all other schools statewide of the same type (elementary, middle, or high school). A "similar schools API rank" reflects how a school compares to 100 statistically matched similar schools. This table shows the school's three-year data for statewide API rank and similar schools API rank, for which information is available.

## Academic Performance Index

The Academic Performance Index (API) is an annual measure of the academic performance and progress of the schools within California. API is measured on a scale from 200 to 1,000. This score reflects the school, district or a student group's performance level, based on the results of statewide testing. The state has set an API score of 800 as the statewide target.

The annual API reporting cycle consists of the Base and Growth API. The Base API data is released one year after testing occurs (i.e. The 2010 Base is calculated from results of statewide testing in spring 2010, but is not released until May 2011). Growth API, released following the Base API, calculates test results taken from the most recent school year (i.e. The Growth API is calculated from results of statewide testing in spring 2010 and released in August 2010). Therefore, for the 2010-2011 API reporting cycle, the 2010 Base indicator and 2011 Growth indicator are used.

To learn more about API, please visit the API information guide at [www.cde.ca.gov/ta/ac/ap/documents/infoguide11.pdf](http://www.cde.ca.gov/ta/ac/ap/documents/infoguide11.pdf) and the API overview guide at [www.cde.ca.gov/ta/ac/ay/documents/overview11.pdf](http://www.cde.ca.gov/ta/ac/ay/documents/overview11.pdf).

## API Ranks

API Ranks — Three Year Comparison

	2008	2009	2010
Statewide API Rank	*	*	*
Similar Schools API Rank	*	*	*

## API Growth by Student Group

This table displays, by student group, first, the 2011 Growth API at the school, district, and state level followed by the actual API change in points added or lost for the past three years.

API Growth by Student Group – 2011 Growth API and Three Year Comparison

Group	2011 Growth API						Desert Valley HS — Actual API Change		
	Desert Valley HS		Brawley UHSD		California		08-09	09-10	10-11
	Number of Students	Growth API	Number of Students	Growth API	Number of Students	Growth API			
All Students	62	565	1,266	736	4,683,676	778	4	63	-39
Black or African American	1	■	16	700	317,856	696	■	■	■
American Indian or Alaska Native	0	■	0	■	33,774	733	■	■	■
Asian	0	■	3	■	398,869	898	■	■	■
Filipino	0	■	5	■	123,245	859	■	■	■
Hispanic or Latino	59	544	1,080	720	2,406,749	729	■	■	■
Native Hawaiian or Pacific Islander	0	■	0	■	26,953	764	■	■	■
White	2	■	145	835	1,258,831	845	■	■	■
Two or More Races	0	■	3	■	76,766	836	■	■	■
Socioeconomically Disadvantaged	54	521	816	695	2,731,843	726	■	■	■
English Learners	36	514	480	662	1,521,844	707	■	■	■
Students with Disabilities	2	■	85	450	521,815	595	■	■	■

\* The school is an Alternative Schools Accountability Model (ASAM) school. Schools participating in the ASAM do not currently receive statewide or similar schools rankings on this report in recognition of their markedly different educational missions and populations served.

■ Data are reported only for numerically significant groups.

### Adequate Yearly Progress

The No Child Left Behind (NCLB) Act requires that all schools and districts meet Adequate Yearly Progress (AYP) requirements. California public schools and districts are required to meet or exceed criteria in these four target areas:

1. Participation rate on statewide assessments in English-language arts and mathematics
2. Percentage of students scoring proficient on statewide assessments in English-language arts and mathematics
3. API scores
4. Graduation rate for high schools

The table displays whether or not the school and district met each of the AYP criteria and made overall AYP for 2010-11. For more information, visit [www.cde.ca.gov/ta/ac/ay/](http://www.cde.ca.gov/ta/ac/ay/).

Adequate Yearly Progress Criteria				
	Desert Valley HS		Brawley UHSD	
<b>Met Overall AYP</b>	No		No	
<b>AYP Criteria</b>	<b>English-Language Arts</b>	<b>Mathematics</b>	<b>English-Language Arts</b>	<b>Mathematics</b>
<b>Participation Rate</b>	Yes	Yes	Yes	Yes
<b>Percent Proficient</b>	Yes	Yes	No	No
<b>API</b>	No		Yes	
<b>Graduation Rate</b>	Yes		Yes	

### Federal Intervention Program

Districts and schools receiving Title I funding that fail to meet AYP over two consecutive years in the same content area (English-language arts or mathematics) or on the same indicator (API or graduation rate) can enter into Program Improvement (PI). Each additional year that the district or schools do not meet AYP results in advancement to the next level of intervention. This table displays the 2011-12 Program Improvement status for the school and district. For more information, please visit [www.cde.ca.gov/ta/ac/ay/](http://www.cde.ca.gov/ta/ac/ay/).

Federal Intervention Program		
	Desert Valley HS	Brawley UHSD
<b>Program Improvement Status</b>	Not In PI	In PI
<b>First Year of Program Improvement</b>	◇	2010-2011
<b>Year in Program Improvement</b>	◇	Year 2
<b>Number of Schools Identified for Program Improvement</b>	1	
<b>Percent of Schools Identified for Program Improvement</b>	33.3%	

### Public Internet Access

Internet access is available at public libraries and other locations that are publicly accessible (i.e., the California State Library). Access to the Internet at libraries and public locations is generally provided on a first-come, first-served basis. Other use restrictions include the hours of operation, the length of time that a workstation may be used (depending on availability), the types of software programs available at a workstation, and the ability to print documents.

◇ Not applicable.

### Types of Services Funded

In addition to general State funding, Brawley Union High School District receives State and Federal funding for the following categorical, Special Education, and support programs:

- Title I, Part A
- Title I, ARRA
- Title II
- Title III
- Special Education
- Carl Perkins Funds
- Economic Impact Aid (EIA)
- Gifted and Talented Education (GATE)
- Instructional Materials
- Home-to-School Transport
- Migrant Education
- California High School Exit Examination (CAHSEE) Intervention
- ROP



### Professional Development

The major areas of focus for staff development include curriculum and instruction, school discipline and safety, technology, student assessment and data, student support services, and school-site accountability.

The methods used to deliver professional development involve staff development days, department and collaboration meetings, and grade level/course-subject area meetings. Teachers are supported during the implementation through staff meetings, teacher-administrator meetings, student performance data analysis, and reporting. The district also participates in professional development opportunities provided through the Imperial County Office of Education.

For the 2008-09 school year, we dedicated five days for professional development. In 2009-10, there were five days, and in 2010-11, there were three days dedicated for professional development.

### Advanced Placement Courses

No information is available for Desert Valley High School regarding advanced placement (AP) courses offered.



*“The teachers and staff at Desert Valley are able to provide students the attention and support the students may require at a crucial period in their lives.”*



### Completion of High School Graduation Requirements

This table shows the percentage of students (who began the 2010-11 school year in the 12th grade) who met all local graduation requirements for receiving a high school diploma including having passed both the English-language arts and mathematics portions of the CAHSEE or received a local waiver or state exemption. Please note state results are not available. For more information, please visit [www.cde.ca.gov/ta/tg/hs](http://www.cde.ca.gov/ta/tg/hs).

Completion of High School Graduation Requirements		
Group	Graduating Class of 2011	
	Desert Valley HS	Brawley UHSD
All Students	76.9%	88.6%
Black or African American	❖	❖
American Indian or Alaska Native	❖	❖
Asian	❖	❖
Filipino	❖	❖
Hispanic or Latino	77.2%	88.0%
Native Hawaiian or Pacific Islander	❖	❖
White	72.7%	91.2%
Two or More Races	❖	❖
Socioeconomically Disadvantaged	77.5%	87.4%
English Learners	78.8%	79.3%
Students with Disabilities	83.3%	82.1%

### Graduates and Dropouts

This table displays the graduation and one-year dropout rates for the most recent three-year period for which data is available. Note: The National Center for Education Statistics graduation rate as reported in AYP is provided in this table.

	Graduate and Dropout Rates					
	Graduation Rate			1-year Dropout Rate		
	07-08	08-09	09-10	07-08	08-09	09-10
Desert Valley HS	81.00%	81.34%	84.16%	17.1%	10.2%	5.7%
Brawley UHSD	80.98%	81.34%	84.16%	4.1%	3.9%	3.5%
California	80.21%	78.59%	80.44%	4.9%	5.7%	4.6%

❖ Scores are not shown when the number of students tested is 10 or less, either because the number of students tested in this category is too small for statistical accuracy or to protect student privacy.

*“Excellence in Education”*



## Admission Requirements for California's Public Universities

**University of California:** Admission requirements for the University of California (UC) follow guidelines set forth in the Master Plan, which requires that the top one-eighth of the state's high school graduates, as well as those transfer students who have successfully completed specified college course work, be eligible for admission to the UC. These requirements are designed to ensure that all eligible students are adequately prepared for University-level work.

For general admissions requirements, please visit the UC Admissions Information Web page at [www.universityofcalifornia.edu/admissions](http://www.universityofcalifornia.edu/admissions). (Outside source)

**California State University:** Eligibility for admission to the California State University (CSU) is determined by three factors:

- Specific high school courses
- Grades in specified courses and test scores
- Graduation from high school

Some campuses have higher standards for particular majors or students who live outside the local campus area. Because of the number of students who apply, a few campuses have higher standards (supplementary admission criteria) for all applicants. Most CSU campuses have local admission guarantee policies for students who graduate or transfer from high schools and colleges that are historically served by a CSU campus in that region. For admission, application, and fee information see the CSU Web page at [www.calstate.edu/admission/admission.shtml](http://www.calstate.edu/admission/admission.shtml). (Outside source)

## Course Enrollment for UC/CSU Admission

The table displays two measures related to the school's courses that are required for University of California (UC) and/or California State University (CSU) admission for the most recent year for which data is available. For more detailed information, visit <http://dq.cde.ca.gov/dataquest/>.

University of California and California State University Admission	
	2009-10
Percentage of Students Enrolled in Courses Required for UC/CSU Admission	61.6%
Percentage of Graduates Who Completed All Courses Required for UC/CSU Admission	0.0%

## Career Technical Education Programs

Career Path preparation begins in elementary school, where students are introduced to careers through guest speakers, field trips, job shadowing, work based activities, and career days which focus on the five Brawley Union High School career pathways.

Ninth graders are provided the opportunity to enroll in Introduction to Computers, where they learn Internet career research through Career Locker and produce their first resume. Through tenth grade advisement, students select their initial career pathway and complete a second career-interest inventory. Students may select from a total of 21 career pathway classes (including ROP programs) in the industry sector such as: Agriculture and Natural Resources, Arts and Communications, Information Technology, Health Science and Medical Technology, Education Child Development and Family Services, Marketing and Sales, Building Trades and Construction, and Manufacturing and Product Development.

Capstone career path courses focus on internships which are offered through the Brawley Union High School internship program, Imperial Valley Regional Occupational Program (IVROP) internship, Brawley Union High School work experience, Special Education WorkAbility, Imperial County Work Force Investment Act training, Migrant Education work experience, and Cal-SAFE.

BUHSD offers several CTE courses to its student population. The following courses are offered at BUHS:

- Animal Science
- Plant Science
- Medical Terminology
- Graphic Arts
- Marketing
- Drafting
- Introduction to Agriculture
- Environmental Agriculture
- Advanced Computerized Applications
- Parenting
- Pre-School
- Developmental Psychology
- Electronics

Continued on page 10



## Career Technical Education Participation

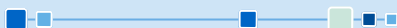
This table displays information about participation in the school's Career Technical Education (CTE) programs.

Career Technical Education Data	
2010-11 Participation	
Number of Pupils Participating in CTE	0
Percentage of Pupils Who Completed a CTE Program and Earned a High School Diploma	0%
Percentage of CTE Courses that are Sequenced or Articulated Between a School and Institutions of Postsecondary Education	0%





*“Desert Valley High School’s mission is to create a positive educational atmosphere, and to model the behaviors needed for students to become responsible citizens in their community”*



### Suspensions and Expulsions

This table shows the rate of suspensions and expulsions (the total number of incidents divided by the school’s total enrollment) for the most recent three-year period.

Suspension and Expulsion Rates			
Desert Valley HS			
	08-09	09-10	10-11
Suspension Rates	0.511	0.431	0.191
Expulsion Rates	0.005	0.009	0.015
Brawley UHSD			
	08-09	09-10	10-11
Suspension Rates	0.218	0.254	0.215
Expulsion Rates	0.011	0.006	0.004

### Career Technical Education Programs

*Continued from page 9*

In conjunction with CTE courses, BUHSD offers nine Regional Occupation Program (ROP) programs that are offered through the BUHS District and comprise a significant component of the Career Technical Education program. The ROP programs focus on the internship aspect of career preparation and are open to students who are 16 years and older and also to adults. BUHS District offers the following ROP programs:

- ROP Graphic Arts
- ROP Stage and Theatre
- ROP Nursing
- ROP Landscape
- ROP Office Occupations
- ROP General Construction
- ROP Welding
- ROP Careers with Children
- ROP Retail Trades

BUHSD’s CTE Advisory Committee is comprised of shareholders including: BUHSD Superintendent, Principal, Deputy Principal, Director of Special Education, Career Specialist, CTE Teachers, Counselors, Students, Parents, Imperial Valley Regional Occupational Program Superintendent and Staff, Community Business Partners, Workforce Investment Board, WIB Director, and the Imperial Valley Regional Occupational Advisory Committee.

The primary representative of the District’s Career Technical Education Advisory Committee is Antonio Munguia who can be reached at (760) 312-5110.

### California High School Exit Exam Results

The California High School Exit Exam (CAHSEE) is primarily used as a graduation requirement in California. Students are first tested in tenth grade and have multiple chances to retake the test if the student does not pass the first time. The grade 10 results of this exam are also used to determine AYP for high schools as required by the federal NCLB law. The CAHSEE has two sections: English-language arts and Math. For the purposes of calculating AYP, three performance levels were set: Advanced, Proficient, and Not Proficient.

The table displays the percentage of students scoring at Proficient or Advanced levels for the most recent three-year period. Note: The score a student must achieve to be considered Proficient is different than the passing score for graduation requirement.

	Percentage of Students Scoring at Proficient or Advanced Levels					
	English-Language Arts			Mathematics		
	08-09	09-10	10-11	08-09	09-10	10-11
Desert Valley HS	❖	❖	8%	❖	❖	❖
Brawley UHSD	44%	49%	56%	45%	46%	50%
California	52%	54%	59%	53%	54%	56%

### District CAHSEE Results: English-Language Arts and Mathematics

This table displays the percentage of students, by subject, achieving at each performance level in English-language arts and mathematics for the most recent testing period for the district. School scores are not shown when the number of students tested is 10 or less, either because the number of students tested is too small for statistical accuracy or to protect student privacy. Therefore, only district scores are displayed.

	Percentage of Students Achieving at Each Performance Level		
	All Students in the District		
	Not Proficient	Proficient	Advanced
English-Language Arts	44%	31%	25%
Mathematics	50%	36%	14%

❖ Scores are not shown when the number of students tested is 10 or less, either because the number of students tested in this category is too small for statistical accuracy or to protect student privacy.

## Teacher Qualifications

This table shows information about teacher credentials and teacher qualifications. More information can be found by visiting <http://data1.cde.ca.gov/dataquest/>.

Teacher Credential Information				
	Brawley UHSD	Desert Valley HS		
Teachers	10-11	08-09	09-10	10-11
With Full Credential	80	8	9	8
Without Full Credential	3	0	0	0
Teaching Outside Subject Area of Competence		1	0	0

## Teacher Misassignments and Vacant Teacher Positions

This table displays the number of teacher misassignments (teachers assigned without proper legal authorization) and the number of vacant teacher positions (not filled by a single designated teacher assigned to teach the entire course at the beginning of the school year or semester). Please note: Total teacher misassignments includes the number of misassignments of teachers of English Learners.

Teacher Misassignments and Vacant Teacher Positions			
	Desert Valley HS		
	09-10	10-11	11-12
Teacher Misassignments of English Learners	0	0	0
Total Teacher Misassignments	0	0	0
Vacant Teacher Positions	0	0	0

## No Child Left Behind Compliant Teachers

NCLB requires that all teachers of core academic subject areas be "highly qualified." In general, for a teacher to be considered highly qualified, they must have a bachelor's degree, an appropriate California teaching credential, and have demonstrated competence for each core subject he or she teaches. The table displays data regarding NCLB compliant teachers from the 2010-11 school year. For more information on teacher qualifications related to NCLB, please visit [www.cde.ca.gov/nclb/sr/tq](http://www.cde.ca.gov/nclb/sr/tq).

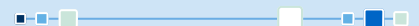
No Child Left Behind Compliant Teachers		
	Percent of Classes in Core Academic Subjects	
	Taught by NCLB Compliant Teachers	Taught by Non-NCLB Compliant Teachers
Desert Valley HS	81.08%	18.92%
All Schools in District	94.72%	5.28%
High-Poverty Schools in District	94.72%	5.28%
Low-Poverty Schools in District	◇	◇

◇ Not applicable.

## Academic Counselors and School Support Staff

This table displays information about academic counselors and support staff at the school and their full-time equivalent (FTE).

Academic Counselors and School Support Staff	
Academic Counselors: FTE and Ratio	
Number of Academic Counselors	1.0
Ratio of Students Per Academic Counselor	199:1
Support Staff	FTE
Social/Behavioral or Career Development Counselors	0.0
Library Media Teacher (Librarian)	0.0
Library Media Services Staff (Paraprofessional)	0.0
Psychologist	0.0
Social Worker	0.0
Nurse	0.0
Speech/Language/Hearing Specialist	0.0
Resource Specialist (non-teaching)	0.0



**NCLB Note:** High-poverty schools are defined as those schools with student participation of approximately 75% or more in the free and reduced priced meals program. Low-poverty schools are those with student participation of approximately 25% or less in the free and reduced priced meals program.

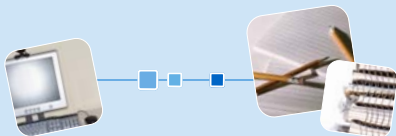
### School Financial Data

The following table displays the school's average teacher salary and a breakdown of the school's expenditures per pupil from unrestricted and restricted sources.

School Financial Data	
Desert Valley HS	
Total Expenditures Per Pupil	\$6,489
Expenditures Per Pupil From Restricted Sources	\$1,187
Expenditures Per Pupil From Unrestricted Sources	\$5,302
Annual Average Teacher Salary	\$78,816



*"Our mission is driven by a caring and committed staff and with the commitment of our stakeholders in the community."*



### School Accountability Report Card

PUBLISHED BY:



www.sia-us.com | 800.487.9234

### Financial Data

The financial data displayed in the SARC is from the 2009-10 fiscal year. The most current fiscal information available provided by the state is always two years behind the current school year, and one year behind most other data included in this report. For more detailed financial information, please visit [www.cde.ca.gov/ds/fd/cs](http://www.cde.ca.gov/ds/fd/cs) and [www.cde.ca.gov/ds/fd/ec](http://www.cde.ca.gov/ds/fd/ec).

### District Financial Data

This table displays district teacher and administrative salary information and compares the figures to the state averages for districts of the same type and size based on the salary schedule. Note the district salary data does not include benefits.

District Salary Data		
Category	Brawley UHSD	Similar Sized District
Beginning Teacher Salary	◇	\$41,858
Mid-Range Teacher Salary	◇	\$65,907
Highest Teacher Salary	◇	\$85,023
Average Principal Salary	◇	\$114,791
Superintendent Salary	◇	\$153,090
Teacher Salaries — Percent of Budget	43%	36%
Administrative Salaries — Percent of Budget	7%	6%

### Financial Data Comparison

The following table displays the school's per pupil expenditures from unrestricted sources and the school's average teacher salary and compares it to the district and state data.

Financial Data Comparison		
	Expenditures Per Pupil From Unrestricted Sources	Annual Average Teacher Salary
Desert Valley HS	\$5,302	\$78,816
Brawley UHSD	\$1,968	\$70,090
California	\$5,455	\$68,269
School and District — Percent Difference	+62.9%	+11.1%
School and California — Percent Difference	-2.9%	+13.4%

◇ Information not available.

Data for this year's SARC was provided by the California Department of Education (CDE), school and district offices. For additional information on California schools and districts, please visit DataQuest at <http://data1.cde.ca.gov/dataquest>. DataQuest is an online resource that provides reports for accountability, test data, enrollment, graduates, dropouts, course enrollments, staffing, and data regarding English Learners. Additionally, Ed-Data in partnership with the CDE, provides extensive financial, demographic, and performance information about California's public kindergarten through grade twelve school districts and schools. More information can be found at [www.ed-data.k12.ca.us/Pages/Home.aspx](http://www.ed-data.k12.ca.us/Pages/Home.aspx).

All data accurate as of December 2011.