



We are JOHNSON:
Where students become
college and career ready!

Frequently Asked Questions

Will this Nickel increase my next property tax bill?

NO. This Nickel was implemented in the Fall of 2015 and has been included in your property taxes for the last two tax cycles, 2015 and 2016. Supporting this does not increase your tax burden.

Why does Johnson County need this funding?

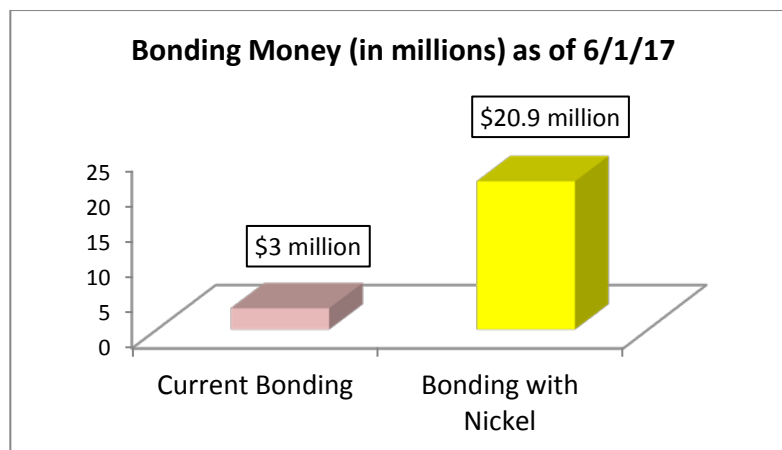
Johnson County has leveraged every available funding source to provide for quality, safe and efficient facilities for student learning. We are currently exploring energy savings contracts to improve district wide facilities at no cost to you, the local taxpayer. Our current facility needs are greater than our currently available funding resources. See District Facilities Plan (DFP) @ www.johnson.kyschools/dfp

Why does the increase have to be five cents? Why can't the School Board raise a lesser amount to start?

The Nickel is an available funding mechanism provided by the KY Legislature. In Johnson County, the state match is estimated at \$1.83 on the dollar. Johnson County Schools would qualify to receive \$827,837 per year through this matching program. Over a twenty year period this will total local funding of nearly \$9 million and state match funding of nearly \$16.5 million. This \$16.5 million is money shifted from other wealthier parts of the state to improve our community and is only available if our community votes FOR (Graphic).

How will this impact the Johnson County School District?

The District Facility Planning Committee decides the facility needs of the district. We are continuously evaluating the conditions and needs of our schools. Currently, Johnson Central High is listed as the number one priority on the district facilities plan. Additional bonding potential is needed to address any of our facility needs.



Why should I support the Nickel if I do not have children in school?

Our community's future workforce including professionals completing our high school programs in the areas of engineering, nursing, health science, technology, video production, construction trades, culinary arts, business/entrepreneurship, and agriculture will come from children who are educated in Johnson County Schools. As citizens and as business owners, we have to invest in our students' education in order to secure our own success.

What type of tax is this? Why can't the School Board tax income, revenue, payroll, or motor vehicles for construction?

The Nickel is a restricted tax on property only. This does not include taxes on motor vehicle or boats. The only option for Johnson County School District to increase funds strictly for construction is the Nickel Tax.

How will the district account for this money?

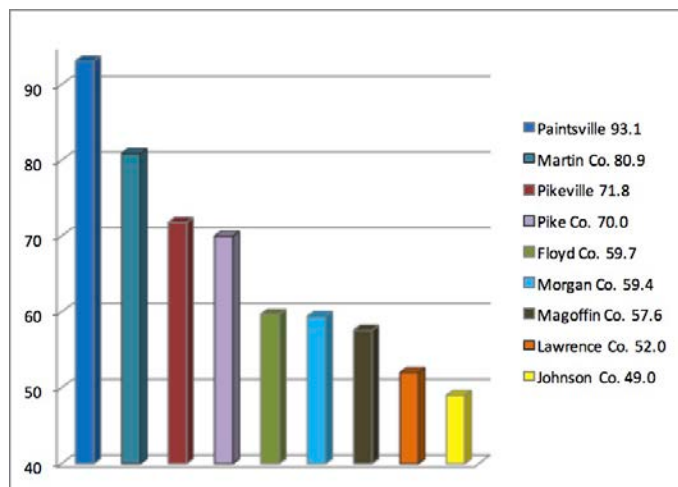
The nickel increase has to be accounted for separately and maintained in a separate fund, Fund 320 – Building Fund. All school district funds are audited annually and reviewed by KDE to determine that these funds are restricted properly and that they are only used for allowed expenditures.

Can the tax increase be spent on salaries?

NO. These funds will be restricted and accounted for in a separate fund, Fund 320 – Building Fund. It CANNOT be spent on salaries or instruction. It CAN ONLY be spent on construction, renovation and debt service for construction and renovation.

How does Johnson County's property tax rate, including the Nickel compare to area districts?

Johnson County has the lowest property tax rate of all surrounding districts at 49 cents per hundred dollars of assessment compared to the highest property tax rate at Paintsville Independent of 93.1 cents per hundred dollars.



How can you support our students, your community, and our future?

Go to the polls on May 23 and vote FOR the kids.

Paper Ballot – Request now up until 7 days before election.

Vote in person at the clerk's office – May 11th through May 22nd.

For more information or to ask any other questions, please contact Tom Salyer, Superintendent of Johnson County Schools at 606-789-2500 or via email at tom.salyer@johnson.kyschools.us