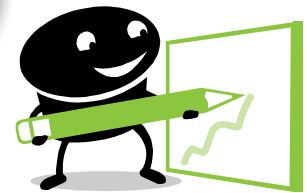


Does your child need to be picked up or dropped off at a sitters house? Grandparents? Day Care?

Here is what you do:

1. Contact your child's school.
2. Fill out the necessary forms.
3. Transportation will contact you with the updated information.



**ALL CHANGES IN TRANSPORTATION
MAY REQUIRE 24-48 HOURS
TO TAKE EFFECT.**



You are allowed an AM bus stop and a separate PM bus stop if necessary. The bus stops must be the same every day of the week.