

BETHPAGE

www.bethpagecommunity.com

BUDGET EDITION 2011

Union Free School District

NEWSLETTER

SUPPORTING EXCELLENCE AND EFFICIENCY

Proposed Budget: One of the Lowest Budget-to-Budget Increases in 20 Years!

Every year the budget planning process becomes more difficult and this year was no exception. The Board of Education, Administration and community budget advisory committee worked together to review and evaluate every line-by-line item to develop a proposed budget that continues to support the high-value education our children receive, while minimizing the financial burden on our community. Every possible efficiency was studied.

Despite the overall state of the economy, rising costs and unfunded mandates, the loss of \$1.2 million in state aid, and an additional payment of \$1.3 million in pension costs, the proposed budget of \$74,583,334 represents a 2.333% budget-to-budget increase. *This is one of the lowest budget-to-budget increases in 20 years and will be one of the lowest budget increases in Nassau County.*

Our students continually excel in academics, the arts and athletics. Our assessment and graduation statistics are among the highest in Nassau County. We take pride in the professionalism of our dedicated staff and administration. Our fields and state of the art Athletic Complex are the envy of neighboring communities. This is a true testament to the school community partnership that believes in the value of a quality education. We thank you for your continued support and encourage you to play an active role in our District's future. Please remember to vote on Tuesday, May 17, 2011, from 7 a.m. to 9 p.m. in the high school gymnasium.

2011-2012 Budget Supports and Preserves:

- Class size policy
- Elementary summer school
- TGIF program for JFK and BHS
- 21st Century Scholars' Program for all schools
- All clubs and extracurriculars for all schools
- Saturday AIS classes for all three elementary schools
- K-12 Inclusion Program
- Student transportation mileage policy
- Full Day Kindergarten
- Robotics program
- Artist-in-Residence programs for JFK and BHS (Fine Arts, Carnegie Hall, Metropolitan Opera)

2011-2012 Budget Enhances the Current Instructional Program:

- SMARTBoards for elementary classrooms
- Staff development efforts in differentiated instruction, technology, and anti-bullying
- Technology upgrades for all schools
- District Summer School for special needs students

*Budget-to-Budget
Increase 2.333%
One of the Lowest in
20 Years!*



BUDGET VOTE

TUESDAY, MAY 17TH, • 7 AM – 9 PM • BETHPAGE HS GYM

A

MESSAGE

FROM THE SUPERINTENDENT

Dear Parents and Residents,

By now everyone on Long Island knows that school districts are facing tough budget decisions this year. Bethpage is no exception. We have had our state aid reduced by \$1.2 million. Our pension costs, which we have no control over, have increased by \$1.3 million. Those two issues alone create a huge fiscal challenge for us.

Your Board of Education gave us one overriding directive: to the extent possible, minimize the impact of any cuts on student instruction. In collaboration with the Citizen's Budget Advisory Committee, the District has worked to construct a budget that balances instructional needs with fiscal discipline. The result is a budget increase of 2.3%, one of the lowest increases in the past twenty years.

We heard from many of you that you like the programs that make Bethpage such a special place. You asked us to keep Elementary Summer School, TGIF, 21st Century Scholars, Artists-in-Residence, K-12 Inclusion, Robotics and Full Day Kindergarten. All of those programs are preserved in the proposed budget. In addition, the District's class size policy remains unchanged.

Efficiencies were achieved in many areas. Much like many of you, we refinanced loans (in our case callable serial bonds) to take advantage of lower interest rates. We eliminated an administrator (the fourth administrative position to be eliminated in recent years). We were also

able to consolidate some custodial and clerical positions. Our investments in energy efficiencies (new lighting, windows, insulation and bringing natural gas to the high school) have provided tangible savings at a time of escalating costs. Through prudent planning, we were able to use almost \$800,000 from our reserves to assist us in this particular year.

The Bethpage teachers also helped out enormously. Facing this fiscal crisis, the teachers asked us what they could do to help. We just settled a two-year contract that includes a zero percent increase for one of the years, a reduction on increment in another year and givebacks on health insurance and starting salaries as we move forward. It is one of the best settlements achieved by any school district on Long Island and we are grateful to our teachers for their willingness to work with us on these issues.

Colleagues in many other districts are being forced to make draconian cuts to programs. Fortunately, we have managed to avoid that for the 2011-12 school year. The 2.3% increase will be among the lower ones you see this year on Long Island. There are definitely challenges ahead. I am confident that this community can work together to get through these tough fiscal years.

I look forward to seeing everyone at the budget vote on May 17!



Terrence Clark
Superintendent of Schools

Cost Savings and Efficiencies

STAFF SAVINGS...

As a result of successful collaborative bargaining efforts between the District and the teachers union, along with retirements and reallocation of staff, the District will realize a savings of approximately \$1 million.

The Superintendent of Schools and all other Central Office administrators had taken a salary freeze in the current school year. In addition, the teachers have negotiated a new two-year contract effective July 1, 2011, in Year 1 with a 1.5% COLA salary schedule increase and a 50% step increment and 0% COLA in Year 2, with a full step. After carefully assessing needs and the realignment of staff, one teaching assistant position, the position of high school pool operator, the elementary part-time library teaching aides, one facilities maintainer position, part-time teaching positions, the Director of Guidance position, one full-time nurse position and the substitute teacher caller position have been eliminated. The District also hired a teacher for the hearing impaired, a service previously provided through Nassau BOCES, which results in a savings to the District.

ENERGY EFFICIENCIES...

Proposition Two:

Voters will be asked to approve Proposition Two authorizing the District to spend \$500,000 from the Capital Reserve Fund for the purpose of bringing natural gas into the schools as a heating source. This expenditure will NOT raise taxes and will substantially reduce future energy costs.

The District has almost completed the second energy saving contract with Johnson Controls Inc., to install energy efficient boilers and solar application projects that will conserve energy usage and therefore, reduce annual energy costs. These projects continue to be funded from the energy savings they produce, and will have no impact on taxpayers. In addition, Phase II of the community development grant obtained from the Town of Oyster Bay in 2009, which funded the entire athletic complex construction project, has been completed. The District and community now have a state-of-the-art athletic complex that is a community resource and the envy of neighboring communities.



The Value Of A Bethpage Education

Our Academic Reputation...

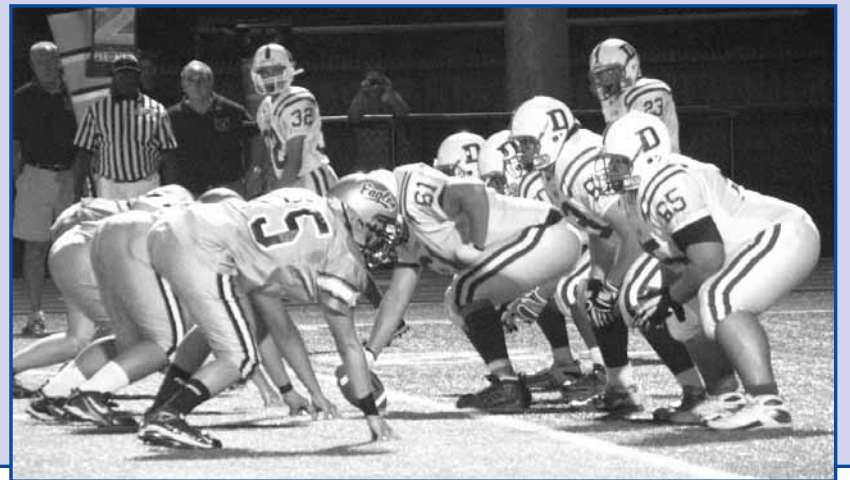
Thanks to a school community partnership that recognizes the value of a 21st Century education, our District and student achievement have both been recognized on local, state, regional, and national levels. Our District has a reputation for providing a quality education in academics, the arts, athletics and character education and community service. Read what others are saying about Bethpage:

- The Center for American Progress ranked Bethpage with a very high Return on Investment when academic scores were related to costs-per-pupil. Our academic ranking was at 92% along with Great Neck, Roslyn, Manhasset and Locust Valley schools, but our cost-per-pupil was several thousand dollars less than any of them.
- *Newsday* recently listed our graduation rate as 100%, the highest in Nassau County and New York State.
- *The New York Times* recently ranked Bethpage as the 54th best school district out of 695 districts in New York State, based on ten years of data from elementary and middle school results.
- *Newsweek* ranks Bethpage High School as one of the Best High Schools in America.
- The Regents Diploma Rate for Bethpage is 99%, one of the highest in Nassau County.
- The Advanced Regents Diploma Rate for Bethpage (the percentage of students passing 8 Regents exams) is 74%, one of the highest in Nassau County.

Our Facilities...

Our buildings and fields continue to be the envy of neighboring communities.

- Thanks to the Town of Oyster Bay, the BHS Athletic Complex was able to host a major NCAA Men's Lacrosse game. Over \$40,000 in proceeds went to the Bethpage Educational Foundation, which supports educational programs in our schools.
- Bethpage Baseball continues to donate funds to upgrade our ball fields.
- Our cafeteria program is cost-effective and allows us to upgrade dining facilities at no cost to the taxpayers.
- The budget continues the revitalization of our infrastructure begun ten years ago. Over the summer, bathrooms will be renovated at JFK and BHS.
- We will have \$3.4 million set aside for future capital improvement projects to be decided by the voters.



Meeting UNFUNDED Mandates

All school districts are required to meet unfunded and/or underfunded mandates imposed by the State and Federal governments. **The costs associated with meeting these state and federally imposed obligations are the primary factors that are driving expenditure increases in the proposed budget. In addition, as a result of Governor Cuomo's \$1.5 billion in statewide education cuts, Bethpage will lose \$1.2 million in state aid for the 2011-2012 school year.** These mandates include:

NYS Assessments (Grades 3-12)

- Assessments/Scantrons
- BOCES Test Scoring
- Training
- Substitute Teachers

NYS Data Collection

- Software
- Staff

MTA Payroll Surcharge

"Race to the Top" Teacher Evaluation Process

NYS-Mandated Academic Intervention Services (A.I.S.)

- Reading
- Math

ESL Services

NYS-Mandated Business Office Positions

- Claims Auditor
- Internal Auditor
- External Auditor

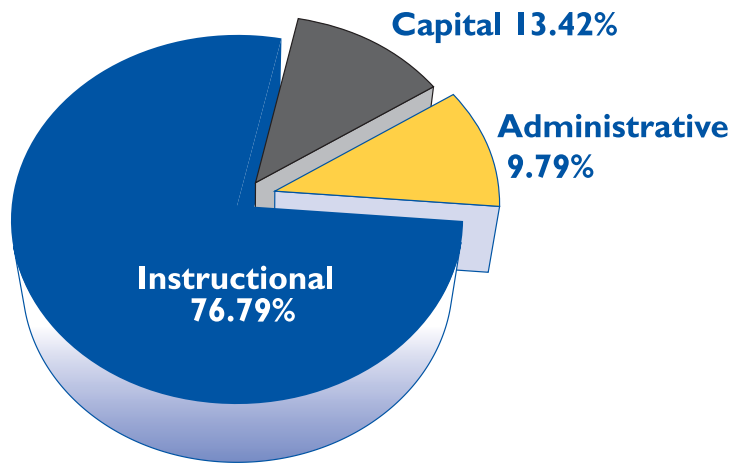
NYS-Mandated Health Services Calculators

SCHOOL BUDGET: 2011-12

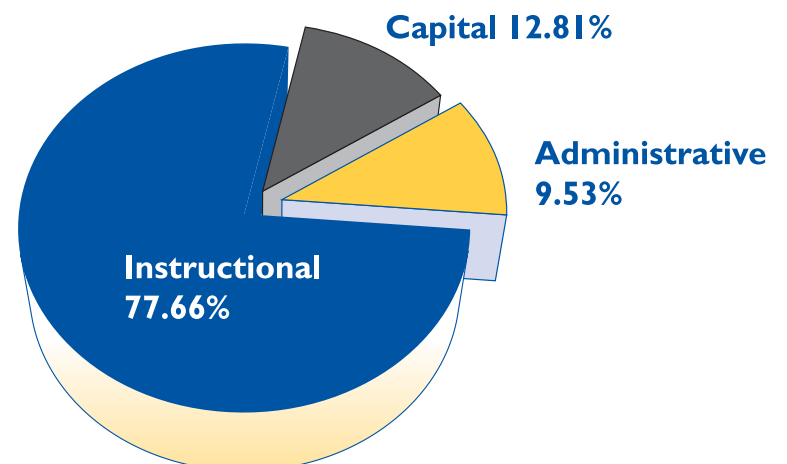
Category	Approved Budget 2010-11	Proposed Budget 2011-12	\$ Difference	% Change
GENERAL SUPPORT				
Board of Education	\$84,883	\$94,207	\$9,324	10.98%
Central Administration	\$368,611	\$365,378	(\$3,233)	-0.88%
Finance	\$938,355	\$889,574	(\$48,781)	-5.20%
Staff	\$1,069,474	\$1,041,244	(\$28,230)	-2.64%
Central Services	\$6,002,834	\$5,695,733	(\$307,101)	-5.12%
Special Items	\$887,636	\$967,856	\$80,220	9.04%
TOTAL GENERAL SUPPORT	\$9,351,793	\$9,053,992	(\$297,801)	-3.18%
INSTRUCTION				
Instructional Administration	\$3,902,050	\$3,818,850	(\$83,200)	-2.13%
Teaching - Regular School	\$25,468,704	\$25,850,181	\$381,477	1.50%
Special Apportionment Programs	\$8,079,574	\$7,886,104	(\$193,470)	-2.39%
Teaching-Special Schools/Adult Ed	\$47,783	\$47,729	(\$54)	-0.11%
Instructional Media	\$1,363,757	\$1,320,347	(\$43,410)	-3.18%
Pupil Services	\$3,888,877	\$3,865,731	(\$23,146)	-0.60%
TOTAL INSTRUCTION	\$42,750,745	\$42,788,942	\$38,197	0.09%
PUPIL TRANSPORTATION				
District Transportation Services	\$378,702	\$296,436	(\$82,266)	-21.72%
District Garage	\$7,725	\$7,725	\$0	0.00%
Contract Transportation Services	\$3,047,360	\$3,068,447	\$21,087	0.69%
TOTAL PUPIL TRANSPORTATION	\$3,433,787	\$3,372,608	(\$61,179)	-1.78%
COMMUNITY SERVICES				
Civic Activities	\$13,640	\$13,640	\$0	0.00%
Census	\$0	\$0	\$0	0.00%
TOTAL COMMUNITY SERVICES	\$13,640	\$13,640	\$0	0.00%
UNDISTRIBUTED				
EMPLOYEE BENEFITS				
State Retirement-ERS	\$867,082	\$1,186,475	\$319,393	36.84%
Teacher Retirement-TRS	\$2,909,907	\$3,902,609	\$992,702	34.11%
Social Security	\$3,089,948	\$3,142,393	\$52,445	1.70%
Workers' Compensation	\$286,678	\$313,913	\$27,235	9.50%
Life Insurance	\$2,000	\$2,000	\$0	0.00%
Unemployment Services	\$2,540	\$5,000	\$2,460	96.85%
Unemployment Insurance Reimbursement	\$206,600	\$266,709	\$60,109	29.09%
Disability Insurance	\$83,737	\$67,436	(\$16,301)	-19.47%
Hospital, Medical, Dental Insurance	\$5,963,911	\$6,741,090	\$777,179	13.03%
Teacher Benefit Trust Fund	\$357,883	\$345,120	(\$12,763)	-3.57%
Other	\$10,992	\$11,322	\$330	3.00%
SUBTOTAL EMPLOYEE BENEFITS	\$13,781,278	\$15,984,067	\$2,202,789	15.98%
DEBT SERVICE				
Existing Debt (Principal & Interest)	\$169,200	\$161,532	(\$7,668)	-4.53%
New Bond Construction (Principal & Interest)	\$2,256,444	\$2,163,532	(\$92,912)	-4.12%
Full-Day Kdgn (EXCEL) (Interest)	\$163,757	\$166,354	\$2,597	1.59%
Tax Anticipation Notes (Interest)	\$148,542	\$150,000	\$1,458	0.98%
SUBTOTAL DEBT SERVICE	\$2,737,943	\$2,641,418	(\$96,525)	-3.53%
INSTALLMENT: LEASE/PURCHASE				
B&G Vehicles (Principal & Interest)	\$46,952	\$0	(\$46,952)	
Playgrounds (Principal & Interest)	\$72,863	\$72,863	\$0	
SUBTOTAL INSTALLMENT	\$119,815	\$72,863	(\$46,952)	-39.19%
OTHER DEBT				
ESCO (Principal)	\$148,256	\$256,391	\$108,135	
ESCO (Interest)	\$186,827	\$146,902	(\$39,925)	
SUBTOTAL OTHER DEBT	\$335,083	\$403,293	\$68,210	20.36%
INTERFUND TRANSFERS				
Transfer to Special Aid Fund	\$208,680	\$110,808	(\$97,872)	-46.90%
Transfer to Capital Fund	\$150,000	\$141,703	(\$8,297)	-5.53%
SUBTOTAL INTERFUND TRANSFERS	\$358,680	\$252,511	(\$106,169)	-29.60%
TOTAL UNDISTRIBUTED	\$17,332,799	\$19,354,152	\$2,021,353	11.66%
TOTAL EXPENDITURES	\$72,882,764	\$74,583,334	\$1,700,570	2.333%

THREE-PART BUDGET EXPLANATION AND ANALYSIS

2010-2011 Approved Budget



2011-2012 Proposed Budget



The State of New York requires all school districts to make available the proposed budget in three component parts: Administrative, Instructional Program, and Capital. Detailed copies of the expenditure budget are available in each school building, at the Bethpage Public Library and on the web: www.bethpagecommunity.com.

BUDGET COMPONENT	2010-11 APPROVED BUDGET	2011-12 PROPOSED BUDGET	DOLLAR AMOUNT CHANGE	PERCENT CHANGE
" ADMINISTRATIVE CAP"	11.311%	10.928%		
ADMINISTRATIVE	\$7,137,843	\$7,105,872	(\$31,971)	-0.448%
INSTRUCTIONAL	\$55,966,238	\$57,920,258	\$1,954,020	3.491%
CAPITAL	\$9,778,683	\$9,557,204	(\$221,479)	-2.265%
TOTAL BUDGET	\$72,882,764	\$74,583,334	\$1,700,570	2.333%

CONTINGENCY (AUSTERITY) BUDGET

If voters do not approve the proposed budget, State law allows for a budget to be presented for one more vote. The Board of Education could make further expenditure reductions, put the same budget up for vote, or adopt a Contingency (austerity) Budget, which is capped at 1.92% (or the CPI of January 2011 of 1.6% multiplied by 120%) expenditure increase for the 2011-12 school year.

The Board has made prudent reductions to propose an expenditure increase of 2.33%. The Proposed 2011-12 Budget maintains a comprehensive program for students.

If the community does not support a second proposed budget, the District must – by law – adopt a budget at or below the Contingency level. Under a Contingency Budget, programmatic spending would be greatly restricted. If the Board were to further reduce the current proposed budget, our program would be negatively impacted. Budget cuts of approximately \$2.4 million would have to be made to reach the Contingency Budget “CAP,” but would have to be made to meet the definition of contingency appropriations. Under this scenario, areas that could be affected include, but are not limited to the following Non-Contingent appropriations:

- All Non-Mandated Programs
- Interscholastic Athletics
- After-School Extracurricular Activities/Clubs
- Student Supplies
- Enrichment Programs
- Class Size
- Staffing
- Summer School
- Computer Hardware
- Transportation (i.e., Field Trips, etc.)
- Continuing Education
- Community Use of School Facilities
- Overtime/Certain Salary Increases

Why Bethpage is a *High Value School District*

Our students' success is a source of community pride. Your continued support has enabled them to establish and expand a standard of excellence that has been demonstrated throughout the 2010-11 school year.

STUDENTS MEETING/EXCEEDING STANDARDS ON HIGH SCHOOL REGENTS EXAMINATIONS:

- 99.5% - Graduation Rate
- 98% - Regents Diploma Rate
- 99% - Living Environment (Science)
- 99% - U.S. History
- 98% - English
- 97% - Integrated Algebra (Formerly Math A)
- 94% - Global History

STUDENTS MEETING/EXCEEDING ASSESSMENT STANDARDS AT JFK MIDDLE SCHOOL

- 96% - 8th Grade Math
- 94% - 8th Grade Science
- 91% - 8th Grade Social Studies
- 85% - 8th Grade ELA

STUDENTS MEETING/EXCEEDING ASSESSMENT STANDARDS AT THE ELEMENTARY SCHOOLS

- 99% - Grade 3 Math
- 98% - Grade 4 Science
- 96% - Grade 5 Social Studies
- 90% - Grade 4 ELA

ACADEMIC

- BHS SAT Scores ranked above National and Statewide averages
- BHS has been listed in *Newsweek's* annual ranking of the top 1,500 high schools in the country for the past six years
- BHS has been named Most Philosophical School in America by Kids Philosophical Slam for several years

- A BHS student was named a National Merit Finalist
- Four BHS students were named National Merit Commended Students
- The Lower Division BHS Mathletes Team placed 10th out of 54 teams in the Nassau Math Tournament, and the Upper Division ranked 14th out of 64 teams
- BHS won first place in the Long Island Ethics Bowl
- Read Across America was held in each of the District's buildings
- The PPS ACE Program provides students with life skills and work experience
- A BHS senior was accepted to The United States Military Academy at West Point
- 21st Century Program successfully launched at elementary level

THE ARTS

- 48 All-County Musicians
- 7 Long Island String Festival Association Participants
- Mark Wood, rock violinist extraordinaire and creator of the Viper Electric Violin, conducted a workshop and held a concert with BHS and JFK Middle School students
- Artist Dan Christoffel worked with students through an Artist-

in-Residence program at JFK Middle School

- One BHS student was named one of The Long Island Arts Alliance 2011 Scholar Artists

ATHLETIC

- Kickline Team placed first in Kick and second in Pom at Nationals
- BHS student won Nassau County Tournament for Wrestling
- The Girls Gymnastics Team are Nassau County Champions
- Three BHS students have signed Letters of Intent to play sports in college
- NCAA Duke vs. Denver game held at BHS Athletic Complex
- BHS Basketball Team hosted a team from Gander, Newfoundland
- 15 Scholar Athlete Teams (to date)



ROI- RETURN ON INVESTMENT

Highlighting the Nassau Schools Ranked in the 92% percentile in New York and their adjusted relative per pupil spending. (Source: Center for American Progress)

School District	Basic ROI	State Achievement Index	Adj. Per Pupil Spending	Percent Low	Enrollment Income	Urbanicity
Great Neck Union Free School District		92	\$18,673	10%	6,349	Suburb:Large
Roslyn Union Free School District		92	\$18,105	6%	3,413	Suburb:Large
Manhasset Union Free School District		92	\$17,517	3%	3,005	Suburb:Large
Bethpage Union Free School District		92	\$14,837	5%	3,102	Suburb:Large
Locust Valley Central School District		92	\$18,759	7%	2,296	Suburb:Large

Their Future **LOOKS BRIGHT**

The Class of 2011 will be remembered as a class of achievers, graduating with the skills needed to become tomorrow's leaders. Through the Grade 12 parent meeting, students and their parents met with the guidance counselors to discuss the college application and selection process. In addition, the guidance department hosted several mini college fairs bringing college representatives to Bethpage so that students could obtain first-hand information about each school and its admission process.

To date, Bethpage High School seniors have been accepted to some of the most prestigious colleges and universities in the nation including Columbia University, Cornell University, Georgetown University, New York University, Stanford University, College of William and Mary, United States Military Academy at West Point, and the University of Pennsylvania as well as a number of SUNY schools.

21st Century Scholars' *A Success Story*

The 21st Century Scholars' Program, which has been a success among students at both JFK Middle School and Bethpage High School, is now provided to fourth and fifth graders at the elementary school level. Earlier this school year, Superintendent Mr. Terrence Clark led presentations for students at Central Boulevard, Charles Campagne, and Kramer Lane Schools, and also offered two overview sessions for parents.

The 2011-2012 proposed budget will continue to maintain the 21st Century Scholars' Program, which is designed to help student participants maximize their potential as both students and citizens. The program encourages students to follow their passions and explore topics of personal interest while developing the skills to be good citizens and thinkers for the challenging 21st Century. Some of the 2010-2011 school year's 21st Century activities included the "Hope is Here to Stay" author presentation and "Valentines for Children" activity at Central Boulevard, and the "Reach Out and Read" collaboration with Winthrop University Hospital at Kramer Lane.



Preserving the Arts

During the months of March and April, students at JFK Middle School and Bethpage High School were fortunate to have two artists work side-by-side with them as they shared their talents.

Mark Wood, violinist extraordinaire, Emmy Award-winning composer, and inventor of the Viper Electric Violin, provided a two-day orchestral workshop entitled "Electrify Your Strings!" for both the high school and middle school string musicians. It culminated in a phenomenal concert on March 2.

Dan Christoffel, former art teacher from the Bellmore-Merrick School District and artist-in-residence for three weeks at JFK Middle School, worked closely with Courtney Young's seventh and eighth-grade art students teaching them about the artistic styles of portraiture and cubism (abstract art), as well as providing slide shows and art vocabulary.

Frequently *Asked* Questions

Q: If the school budget is defeated on May 17, can it be put up for a re-vote again?

A: Yes. According to New York State law, the budget can only have one re-vote.

Q: What are the implications of a contingency budget?

A: A contingency budget would result in reductions of approximately \$2.4 million from the current proposed budget. The district would be required to eliminate certain expenses to conform to the requirements of law. It is likely that reductions would be made in the following areas: instructional and non-instructional staff and programs, athletics, co-curricular activities, after-school programs, the continuing education program, capital work funded from the operating budget, community use of facilities, and any other expenditure reductions as deemed necessary by the Board of Education to comply with legal requirements.

Q: How would being on a contingency budget impact the use of school district facilities and athletic fields by community groups and youth athletic leagues?

A: According to NYS law, under a contingency budget, the District would be required to charge all community groups and youth athletic leagues for the use of school district facilities and athletic fields.

Q: Does the proposed budget eliminate both elementary and secondary summer school programs, TGIF, 21st Century Scholars, clubs and extracurriculars, Robotics, K-12 Inclusion Program, Artist-in-Residence Programs, or Full Day Kindergarten?

A: No. This budget will maintain the instructional programs for all schools.

Bethpage Schools

Bethpage Union Free School District

Bethpage, NY 11714

Board of Education

Joel S. Dauman, *President*

Sandy Watson, *Vice President*

Tom Frost, *Trustee*

Michael J. Kelly, *Trustee*

Anna Israelton, *Trustee*

James A. McGlynn, *Trustee*

Marie Swierkowski, *Trustee*

Central Administration

Mr. Terrence Clark,

Superintendent of Schools

John DeTommaso,

Assistant Superintendent for Instruction and Technology

Caroline Lavelle,

Assistant Superintendent for Human Resources

Joseph A. Marchesiello,

Assistant Superintendent for Business

Non-Profit Org.
U.S. Postage
PAID
Permit No. 37
Bethpage, NY

VOTING INFORMATION

Budget Vote Tuesday, May 17, 2011

7 a.m. - 9 p.m. at Bethpage High School Gymnasium

Qualifications for Voting:

You must be:

- A citizen of the United States.
- Eighteen years of age or older.
- A resident of the District for a period of 30 or more days prior to the vote.
- Registered to vote with the School District or the Nassau County Board of Elections (provided that you voted in a school election during the four calendar years prior to the year for which such register is being prepared).

Budget Vote Registration:

Any person who is not registered to vote in the general election is not eligible to vote in the school district election, but may do so by registering. Continuous voter registration is available during school hours: Monday-Friday, 8:30 a.m.- 3:30 p.m. (only when school is open) at the Administration Building (District Clerk's Office). Note: For the May 17, 2011 vote, you must register by Thursday, May 12, 2011.

Budget Hearing:

The District will conduct an official budget hearing on Tuesday, May 10, 2011 beginning at 8 p.m. at Bethpage High School (Little Theater).

Budget Vote:

Tuesday, May 17, 2011, 7 a.m. - 9 p.m. at Bethpage High School (Gymnasium). Parking in the rear of the building.

Absentee Ballots:

Applications may be obtained from the District Clerk in the Superintendent's Office at the Administration Building: 10 Cherry Avenue, Bethpage or on the District's website (see address below). All absentee ballots must be received in the District Clerk's Office by 5 p.m. on the day of the vote.

More comprehensive budget information is available on the District website at www.bethpagecommunity.com

EVERY VOTE COUNTS!