

Hayden-Winkelman Unified School District

Gila County

Efficiency peer groups 6 and T-9, Achievement peer group 6¹

Legislative district(s): 8

District size, location:

Small, Rural

Students attending:

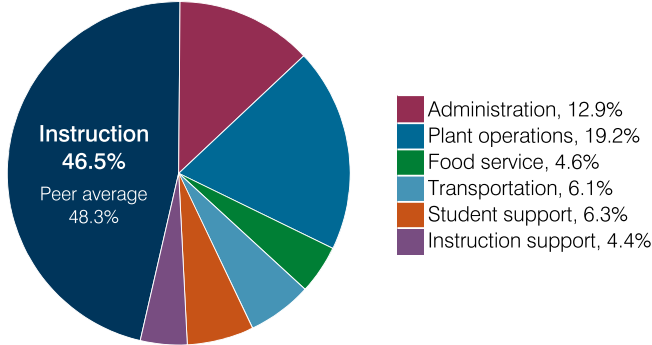
246

Number of schools:

2

OPERATIONAL EFFICIENCY

Spending by operational area



Efficiency measures relative to peer averages

Operational area	Measure	District	Peer average	State average
Administration	Cost per pupil	\$1,932	\$1,744	\$860
	Students per administrative position	35	43	66
Plant operations	Cost per square foot	\$4.24	\$5.27	\$6.34
	Square footage per student	682	321	156
Food service	Cost per meal	\$3.99	\$3.96	\$3.02
Transportation	Cost per mile	\$3.36	\$2.62	\$4.05
	Cost per rider	\$1,599	\$1,457	\$1,301

Very low
Low
Comparable
High
Very high

Per pupil spending

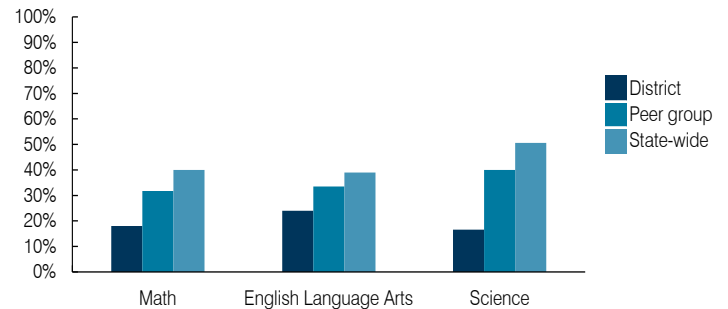
Spending by area	District		Peer average 2018	State average 2018
	2017	2018		
Instruction	\$ 6,612	\$ 6,988	\$ 5,556	\$ 4,480
Administration	1,896	1,932	1,744	860
Plant operations	2,279	2,893	1,706	988
Food service	606	695	546	425
Transportation	1,103	910	592	388
Student support	900	950	672	693
Instruction support	604	665	393	462
Total operational	14,000	15,033	11,209	8,296
Land and buildings	307	121	1,077	827
Equipment	721	472	601	409
Interest	44	12	162	228
Other	19	36	60	169
Total nonoperational	1,091	641	1,900	1,633
Total per pupil spending	\$ 15,091	\$ 15,674	\$ 13,109	\$ 9,929

STUDENT ACHIEVEMENT, STUDENT AND TEACHER MEASURES, AND REVENUES

ADE-assigned school letter grades

Grade	Number of schools	Percentage of schools
A	0	0%
B	0	0%
C	2	100%
D	0	0%
F	0	0%

Students who passed State assessments



Student and teacher measures

Measure	District	Peer average	State average
Attendance rate	94%	93%	94%
Graduation rate (2017)	94%	85%	78%
Poverty rate (2017)	32%	29%	19%
Special education population	15%	14%	12%
Students per teacher	12.3	16.2	18.4
Average teacher salary	\$46,379	\$46,264	\$48,951
Amount from Prop 301	\$6,471	\$6,122	\$6,411
Average years of teacher experience	20.0	12.2	11.4
Percentage of teachers in first 3 years	15%	20%	19%

Per pupil revenues

Revenues by source	District		Peer average 2018	State average 2018
	2017	2018		
Federal	\$ 1,658	\$ 1,571	\$ 2,405	\$ 1,317
State	4,352	5,235	4,080	4,011
Local	10,613	7,672	8,027	4,592
Total per pupil revenues	\$ 16,623	\$ 14,478	\$ 14,512	\$ 9,920

Select revenues from common sources

Source	District	Peer average	State average
Equalization formula funding	\$ 7,134	\$ 7,094	\$ 7,175
Grants	1,870	1,682	2,252
Donations and tax credits	39	90	337

Select revenues from less common sources

Source	District	Peer average	Number of peers receiving
Desegregation	\$ 0	\$ 0	0 of 18
Small school adjustment	5,506	3,317	5 of 18
Federal impact aid	0	0	3 of 18
Voter-approved levy increases	25	0	14 of 18

¹ See Appendix A for information such as districts included in each peer group and Appendix B for sources and methodology.

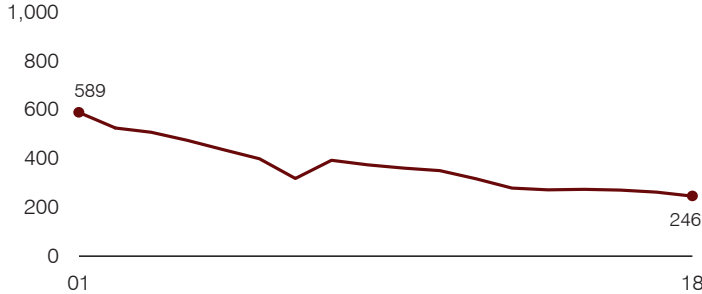
Instructional spending percentage

Year: 2001 2002 2003 2004 2005 2006 2007 2008 2009 2010 2011 2012 2013 2014 2015 2016 2017 2018
 Percentage: 53.3 54.1 52.9 51.2 50.3 52.2 50.7 51.5 47.4 48.8 45.7 46.1 43.8 45.1 44.7 43.5 47.2 46.5

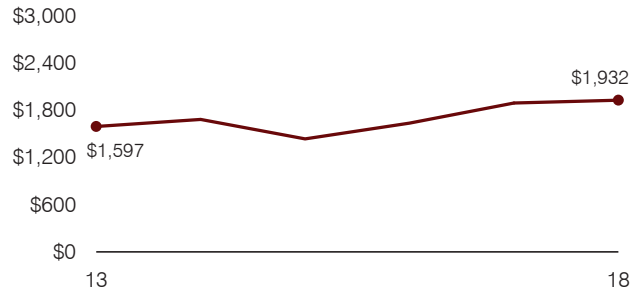
TRENDS AND FINANCIAL STRESS ASSESSMENT

Fiscal years as indicated

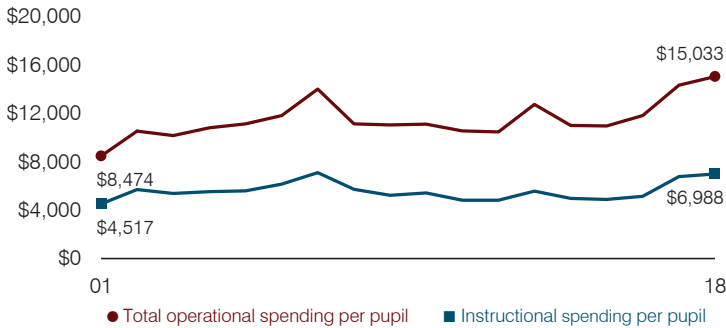
Students attending



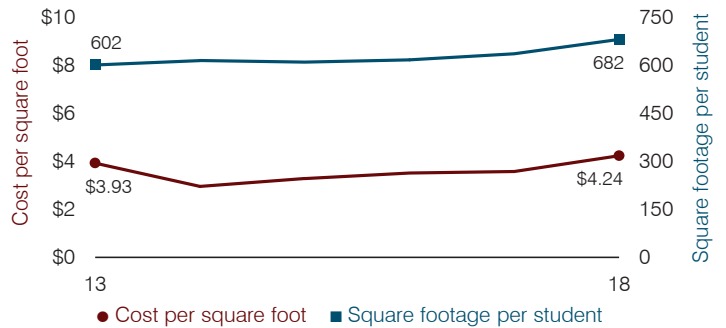
Administrative cost per pupil



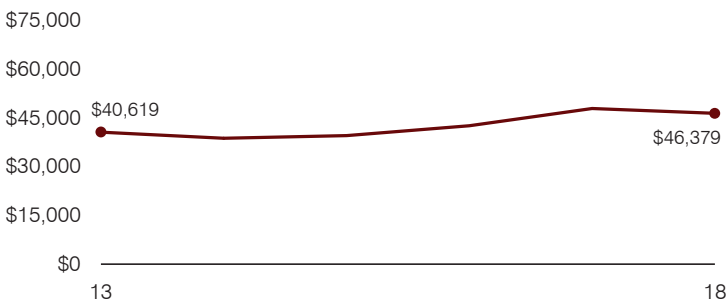
Total operational and instructional spending per pupil (inflation adjusted to 2018 dollars)



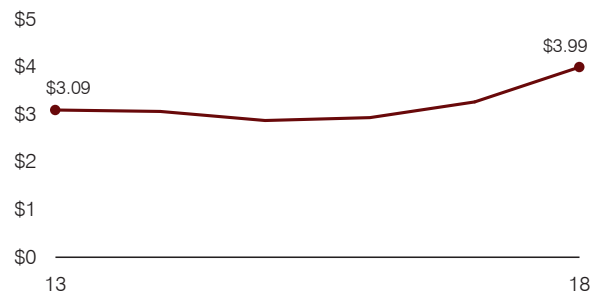
Plant cost per square foot and square footage per student



Average teacher salary



Food service cost per meal



Financial stress assessment

Overall financial stress level: **Low**

Measure: 2016 through 2018	Assessment
Change in number of district students	Small school adjustment
Spending exceeded operating/capital budgets	No overspending
Spending increase election results	No election held
Operating reserve percentage, Trend	4.8%, Steady
Years of capital reserve held	More than 3 years
Current financial and internal control status	Compliant

Low **Moderate** **High**

Transportation costs per mile and per rider

