



Course Catalog 2023-2024

**Curriculum and Course Offerings
for Secondary Schools**



BOARD OF EDUCATION

Alisa Baroukh, President

Matthew Melnick, Vice President

Dr. Scott Eckers, Dr. Jodi Luce, Eileen Napolitano, Melissa Tell, Nancy Widman

ADMINISTRATION

Dr. Kenneth A. Card, Jr.

Anthony Russo

Dr. Patrick Pizzo

Dr. David Casamento

Jennifer Frisenda

Richard Howard

Timothy Voels

Stacy Breslin

James Lethbridge

Superintendent of Schools

Assistant Superintendent for Personnel and Administration

Assistant Superintendent for Business and Finance

Assistant Superintendent for Curriculum and Instruction

Assistant Business Administrator

Principal, East Meadow High School

Principal, W. T. Clarke High School

Principal, W. T. Clarke Middle School

Principal, Woodland Middle School

GUIDANCE STAFF

Dr. Gerilyn Smith, Director of Guidance

East Meadow High School

Christina Egan, Guidance Administrator

School Counselors

Diane Greco

Tamara Healy

Nicole Leibowitz

Michelle Merolla

Steven Pereira

Carly Salzman

Joanna Silberman

W. T. Clarke High School

Nicole Hiken, Guidance Administrator

School Counselors

Talin Alahverdian

Nicole Heller

Christine Milan

Marianna Telese-Femia

Woodland Middle School

Crystal Mello, Guidance Administrator, House I

Patricia Graham, Guidance Administrator, House II

School Counselors

Logan Cole

Claire Nadherny

Mara Prendergast

Kerri Dumelle

Jessica Schmidt

Kristen Sweeney

W. T. Clarke Middle School

Stacy Breslin, Guidance Administrator

School Counselors

Randi Bernstein

Loretta Feret

Alyssa Marino

PUBLIC NOTIFICATION

The East Meadow School District hereby advises students, parents, employees, and the general public that it offers employment and educational opportunities, including vocational education opportunities, without regard to sex, race, color, national origin, or disability. Inquiries regarding this non-discrimination policy may be directed to:

Anthony Russo

Assistant Superintendent for Personnel and Administration

Leon J. Campo Salisbury Center

(516) 478-5552

Betsy Lashin

Director of Special Education and Pupil Personnel Services

Leon J. Campo Salisbury Center

(516) 478-5540

TABLE OF CONTENTS

A LETTER FROM THE SUPERINTENDENT OF SCHOOLS	4
GRADUATION REQUIREMENTS.....	5
REQUIREMENTS FOR DIPLOMA ENDORSEMENTS	6
CTE PATHWAY CERTIFICATIONS.....	9
COLLEGE TESTING & NCAA	10
ADVANCED PLACEMENT AND COLLEGE COURSES HIGHLIGHTS & COURSE WEIGHTINGS	11
DESCRIPTION OF COURSES:	
Art.....	15
Business & Career Programs	20
Engineering Preparatory	26
Technology & Trades.....	27
English Language Arts.....	27
English as a New Language (ENL)	33
Mathematics.....	36
Music.....	41
Physical Education & Health	45
Research Program	46
Science	48
Social Studies	53
World Languages	59



East Meadow School District

Established in 1814

OFFICE OF THE SUPERINTENDENT OF SCHOOLS

DR. KENNETH A. CARD, JR.
Superintendent of Schools

October 2022

Dear Students and Parents:

This is the time to prepare for the next school year. The courses you select for the 2023/24 school year should be suited to your interests and needs. However, I urge you to be mindful of the graduation requirements as you make your course selections.

The accompanying course offering guide is designed to help you make informed choices as to the courses that will help you the most. As the New York State Board of Regents has adopted numerous amendments for obtaining a Regents diploma, you need to know the requirements to graduate with a Regents diploma and local diploma before you select courses for the 2023/24 school year.

If you need any additional help, please contact your guidance counselor who is ready to be of assistance.

Sincerely,

Dr. Kenneth A. Card, Jr.
Superintendent of Schools

KAC/jg

GRADUATION REQUIREMENTS

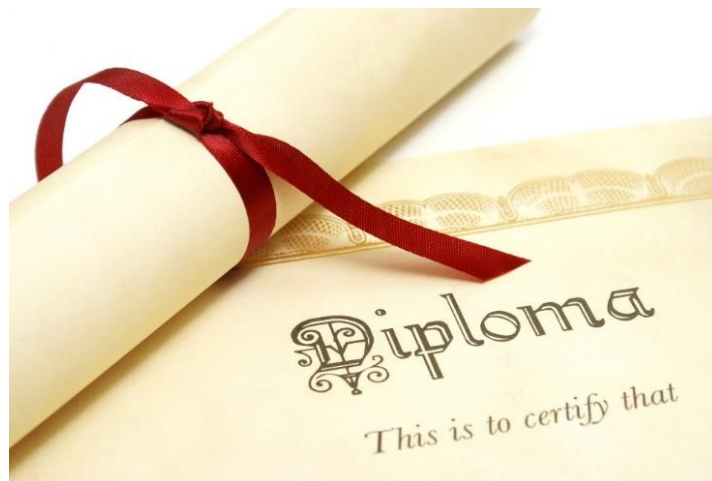
Total Units of Credit

All students are required to earn a minimum of 22 units of credit.

<u>Required Courses</u>	<u>Regents Diploma</u>	<u>Regents Diploma with Advanced Designation</u>
English	4	4
Social Studies	4	4
Mathematics	3	3
Science	3	3
Arts	2*	2*
Health	.5	.5
Physical Education	2	2
World Languages	1	3**
Electives	2.5	.5
TOTAL CREDITS	22	22

* A student may satisfy the Arts requirement by completing 2 units in Art or Music.

**Students must acquire either two additional credits in World Languages and pass a Checkpoint B examination OR a five-credit sequence in the Arts or CTE to obtain a Regents Diploma with Advanced Designation.



REQUIREMENTS FOR DIPLOMA ENDORSEMENTS

Four types of diplomas may be earned by graduating students:

- (1) East Meadow Scholars Diploma
- (2) Regents Diploma with Advanced Designation
- (3) Regents Diploma
- (4) East Meadow Local Diploma

Requirements:

Course and Regents requirements for graduating classes are described below and on the subsequent pages. Since the State Education Department and the East Meadow Board of Education mandates may change, students are expected to consult with their school counselor periodically. The requirements for a high school diploma are determined by the date the student entered the 9th grade.

Students are expected to enroll in a minimum of 7 academic periods each semester for Grades 11 and 12, and 8 academic periods for Grades 9 and 10.

(1) EAST MEADOW SCHOLARS DIPLOMA

In order to meet the requirements for this diploma, students must complete a minimum of 26 units of credit, have an overall unweighted grade point average of 85% or better, and have a combined average of 85% or better for all Regents exams taken. Course requirements include the following:

- 4 Units of English
- 4 Units of Mathematics (must include Algebra I, Geometry and Algebra II)
- 4 Units of Science*
- 4 Units of Social Studies
- 3 Units of the same World Language
- 2 Units of Art and/or Music
- 1/2 Unit of Health
- 2 Units of Physical Education

***Note** – This Diploma requires that students take an additional unit of science beyond the requirements for a Regents Diploma. A student may substitute 5 units in a single subject area in place of a fourth unit in science.

Students must also complete one additional requirement from the following options (units earned above may be counted toward the options shown below):

- A. 5 Units of Art, including Studio Art 1
- B. 5 Units of Music, including at least three years of Performing Music and two years of Music Theory and/or Production; or two years of Performing Music and three years of Music Theory and/or Production.
- C. 4 Units of the same World Language, including the appropriate World Language Checkpoint B Examination
- D. 5 Units of Career Education (includes Business, Occupational, and Technology Education)
- E. 4 Units of Pre-Engineering, plus passing a national exam.

(2) REGENTS DIPLOMA WITH ADVANCED DESIGNATION

Students must meet credit requirements (see chart page 5) and score 65 or higher on required regents exams:

- English Language Arts
- 3 Mathematics (Algebra I, Geometry, Algebra II)
- 1 Social Studies
- 2 Regents in Science (must include one in Life Sciences, generally Living Environment, and one in Physical Sciences)
- 1 Pathway Assessment

Students averaging 90% or better on all Regents examinations required for a Regents Diploma with Advanced Designation earn a **Regents Diploma with Advanced Designation with Honors**.

Students entering Grade 9 in September 2009 and thereafter who complete all coursework and testing requirements for the Regents Diploma with Advanced Designation, and **who pass, with a score of 85 or better**, three commencement level Regents examinations in **Mathematics** and/or three commencement level regents examinations in **Science**, earn a **Regents Diploma with Advanced Designation**, with an annotation on the diploma that denotes mastery in **Mathematics and/or Science, as applicable**.

Advanced Regents Diploma Pathways:

- **Traditional Combination:** ELA, Global History & Geography, US History & Government, 3 Mathematics, 2 Science (1 Life Science and 1 Physical Science) = 8 assessments. In addition, the student must choose either 2 additional credits in World Language and the locally developed Checkpoint B World Language Exam OR a 5-unit sequence in the arts or CTE.
- **Pathway Combination (other than STEM):** ELA, 1 Social Studies, 3 Math, 2 Science (1 Life Science, 1 Physical Science), 1 Pathway (other than Science or Math) or complete the requirements for the CDOS Commencement Credential = 7 (+CDOS) or 8 assessments. In addition, the student must choose either 2 additional credits in World Language and the locally developed Checkpoint B World Language Exam OR a 5-unit sequence in the arts or CTE.
- **STEM (Mathematics) Pathway Combination:** ELA, 1 Social Studies, 4 Math, 2 Science (1 Life Science, 1 Physical Science) = 8 assessments. In addition, the student must choose either 2 additional credits in World Language and the locally developed Checkpoint B Exam or a 5-unit sequence in the arts or CTE.
- **STEM (Science) Pathway Combination:** ELA, 1 Social Studies, 3 Math, 3 Science (at least 1 Life Science, at least 1 Physical science) = 8 assessments. In addition, the student must choose either 2 additional credits in World Language and the locally developed Checkpoint B World Language Exam OR a 5-unit sequence in the arts or CTE.

(3) REGENTS DIPLOMA

Students must meet credit requirements (see chart page 5) and score 65 or higher on required regents exams:

- 1 English Language Arts
- 1 Mathematics
- 1 Social Studies
- 1 Science
- 1 Pathway Assessment

Students averaging 90% or better on required Regents examinations earn a **Regents Diploma with Honors**.

There are 7 pathway assessments available to Regents Diploma students:

1. Arts
2. Career and Technical Education (CTE)
3. Career Development and Occupational Studies (CDOS)
4. Civics
5. Humanities
6. STEM
7. World Languages (Biliteracy)

(4) EAST MEADOW LOCAL DIPLOMA

Students are required to earn a minimum of 22 units of credit (see chart page 5).

Students with a disability may earn an East Meadow Local Diploma if they score between 45-54 on one or more of the five required Regents exams, other than the ELA or Mathematics exam, which must have scores of 55 or higher, scores 65 or higher on one or more of the required Regents exams, allow the lower score to be compensated by the higher score.

ADDITIONAL DIPLOMA CREDENTIALS

The New York State **Career Development and Occupational Studies Commencement Credential** is available to students as a supplement to a diploma or as an exit credential for students with disabilities who are unable to meet the criteria for a diploma. Students must demonstrate commencement level knowledge and skills after having completed coursework and work-based learning experiences in accordance with New York State requirements.

The **Skills Achievement Commencement Credential** is available to students with severe disabilities. It requires achievement of individual goals based on New York State learning standards and each individual student's disability and needs.

CTE PATHWAY CERTIFICATIONS

Business, Technology & Pre-Engineering



The Career and Technical Education (CTE) Endorsement is an enhancement on a student’s high school diploma in the form of a New York State Education Department Seal indicating that a student has completed coursework in a state approved CTE program, along with the requirements for a technical endorsement. The East Meadow School District offers students a choice of 5 CTE Pathways in which students may obtain this diploma distinction. The requirements for any CTE pathway are as follows:

- (1) 3 or 4 course (3 credit minimum) sequence in a pathway, plus a CFM course (except in EMHS multimedia pathway)
- (2) 1 College articulation course
- (3) Teacher completed employability profile
- (4) Electronic portfolio of work
- (5) Passing of a nationally recognized exam – See below for Courses with Exams

*** Required courses for CTE Certification ** May take any or all these courses for the 3-cr./course sequence & Exam**

Merchandising 521401 <i>Exam: Fashion Design Merch. 1</i>	Marketing 521401 <i>Exam: Marketing 1</i>	* Multimedia Technology 110801 <i>Exam: Business Office Specialist or 3 MOS Exams or ADOBE</i>	Construction Trade 480703 <i>Cabinet Exam: Woodwork II Carpentry Exam: Const Trades Found</i>	Technology Pre-Engineering 150000 <i>Exam: Engineering Principles 1</i>	Business Management & Entrepreneurship 520201 <i>Exam: Business Concepts</i>
Careers and Finance (CFM)*	Careers and Finance (CFM)*	Multimedia 1* or Computer Applications (WTCHS)	Careers and Finance* (CFM)	Careers and Finance* (CFM)	Careers and Finance* (CFM)
Fashion 1*	College Marketing* (Exam Given) (LIU Articulation)	Multimedia 2*	Cabinetry 1*(EMHS) Carpentry 1* (WTCHS)	Introduction to Technology (WTCHS)	**Business Management (Option for Exam)
Fashion 2* (LIU Articulation)	Sports & Event Marketing 1 & 2	Multimedia 3* (LIU Articulation)	Cabinetry 2*(EMHS) Carpentry 2*(WTCHS)	Principles of Engineering (SBU Articulation)	Virtual Enterprise (Option for Exam) (LIU Articulation)
Fashion 3* (Exam Given) (LIU Articulation)	Fashion 1, 2 or 3 (LIU Articulation in Fashion 2 & 3)	Microsoft Certification (LIU Articulation) Or Computer Literacy (LIU Articulation) (.5)	Cabinetry 3*(EMHS) Carpentry 3*(WTCHS) (Exam Given) (Delhi Articulation)	Mechanical Technology Design (SBU Articulation)	Contemporary Business (Option for Exam) (LIU Articulation)
	Hospitality and Tourism (.5)			Robotics and Electromechanical Systems (SBU Articulation) (Exam Given)	College Accounting (LIU Articulation)
	DECA (.5)	* CFM course is needed in this pathway at WTCHS			College Marketing (LIU Articulation)
	Virtual Enterprise (LIU Articulation)				Financial Literacy (.5)
					Computer Literacy (LIU Articulation) (.5)
					DECA (.5)

COLLEGE TESTING INFORMATION

Each student must make course selections which satisfy individual diploma requirements. In addition, students should be familiar with any requirements that relate to post-secondary goals. Since most students seek college admission, it is important for all students to be familiar with admission requirements. Most colleges use standardized tests as part of the admissions process. Exams such as SAT, SAT Subject Test, and ACT help colleges in selecting potential enrollees, may help determine a student's placement level upon admission, and may be used by the college in awarding scholarships. Please review the following:

College Board Exams:

SAT - The Scholastic Aptitude Test (SAT) assesses critical reading, writing, and mathematical skills. It is taken by most students in May of their junior year, though some students elect to take it earlier. Students looking to improve their scores may take the SAT again in the fall of their senior year. SAT materials are available at each high school guidance office. Students must register directly with the College Board at www.collegeboard.org

PSAT - The Preliminary Scholastic Aptitude Exam (PSAT) is offered only once a year in mid-October. While the PSAT is considered practice for the SAT, juniors who achieve the highest scores may be considered for the National Merit Scholarship competition. Sophomores taking accelerated math and who have very strong verbal skills are encouraged to take this exam as practice for the following year, when their scores might qualify them for National Merit Scholar recognition. Unlike the SAT/SAT Subject Test, students register for this test at their guidance office.

SAT Subject Test - This exam is an achievement exam. Students who are applying to more selective or competitive colleges want to be familiar with each school's SAT Subject Test requirements.

American College Testing:

ACT - The ACT is a test of skills in English, mathematics, reading, science reasoning, and optional writing. The test may be taken by students in addition to or as an alternative to the SAT. Students should discuss the differences between the SAT and the ACT with their school counselor. Students must register directly with ACT at www.actstudent.org

NCAA COLLEGE ATHLETIC INFORMATION

NCAA requirements for students who expect to participate in college athletics:

Students who plan to participate in Division I or II athletics as freshmen in college must meet certain criteria, as outlined by the NCAA Initial Eligibility Clearinghouse. Students considering participation in college athletics should consult with their school counselor early in their high school career to ensure that their course selections meet NCAA requirements. In addition, they should be aware of NCAA Clearinghouse grade point average and SAT/ACT requirements for participation in athletics. Students should file a clearinghouse application following their junior year at www.eligibilitycenter.org.

ADVANCED PLACEMENT AND COLLEGE-AFFILIATED COURSES

The East Meadow School District provides students with several opportunities to experience college-level courses while still in high school. **These college-level courses are demanding and rigorous. Many of these courses require a summer assignment. Students enrolled in Advanced Placement courses are required to take the AP exam and any state exam for that course.**

Entrance into an Advanced Placement course is based on teacher recommendations and student achievement. In the case of college-affiliated courses, the criteria are established by the individual college or university. Prerequisites are determined by the appropriate curriculum area department or affiliated college.

Parents are encouraged to speak with their child and his/her teachers to understand the expectations and requirements of an Advanced Placement or college credit course so that students are willing and able to do the work required. Students should seriously consider the impact of taking a large number of Advanced Placement or college credit courses in their overall academic workload.

A summary of these advanced or college-level courses is provided on the next page for your review. For a full description of each course, refer to the appropriate departmental area in this course guide.

Please note that tuition at a reduced rate is optional for college credit courses and the College Board charges a fee for Advanced Placement exams.

About the Advanced Placement (AP) Program

The AP Program gives students a chance to experience college-level classes in high school and opens the door to earning college credit before they ever set foot on campus. They will get to dig deeper into subjects they love while building the skills and confidence they need to succeed in college.

Our school offers AP courses in numerous subjects, each of which culminates in a mandatory exam in May. If students score a 3 or higher (on a scale of 1–5), they could earn college credit, skip intro-level courses, or both at thousands of U.S. colleges and universities. Earning credit in high school means paying for fewer credits in college. It also opens up their schedule, allowing them to take more electives, pursue a second major, or study abroad.

Regardless of their AP Exam score, taking AP courses can have a positive impact on their college applications. Admissions officers know college faculty play a big role in developing AP courses, so they know students who took AP pushed themselves to take challenging, college-level courses. This is something colleges like to see. By taking these courses, students can find out what college work is like while they have the support of teachers they trust in an environment they know.

COURSE WEIGHTINGS

Course Type/Level	Weighting Factors
Regents	1.05
Honors	1.10
Advanced Placement/College Level	1.16

COLLEGE-AFFILIATED COURSES

DEPARTMENT	COURSE TITLE	COLLEGE AFFILIATION
ART	Architectural Design & Drawing 3	Farmingdale State College
	Photography 3	Farmingdale State College
	Studio Art 3	Farmingdale State College
BUSINESS	College Business Law	LIU Post
	College Accounting	LIU Post
	Computer Literacy	LIU Post
	Contemporary Business and Economics/Government	LIU Post
	Fashion Merchandising 2 & 3	LIU Post
	College Marketing	LIU Post
	Microsoft Certification	LIU Post
	Multimedia 3	LIU Post
Virtual Enterprise	LIU Post	
ENGINEERING	Principles of Engineering	Stony Brook University
	Mechanical Technology Design	Stony Brook University
	Robotics and Electromechanical Systems	Stony Brook University
ENGLISH	American Literature	LIU Post
	English Literature	LIU Post
	Syracuse English	Syracuse University
MATH	Pre-Calculus	LIU Post
	Pre-Calculus H	LIU Post
SCIENCE	Earth Science	LIU Post
	Forensic Technology and Criminal Law	LIU Post
	Marine Biology	LIU Post
	Syracuse Forensic Science	Syracuse University
SOCIAL STUDIES	College Business Law	LIU Post
	Contemporary Business and Economics/Government	LIU Post
	Forensic Technology and Criminal Law	LIU Post
	The Civil War: America's Turning Point	LIU Post
	U.S. History	LIU Post
WORLD LANGUAGES	ASL (Level 4 & 5)	Stony Brook University
	French, Italian, Spanish (Level 4)	Adelphi University
	French, Italian, Spanish (Level 5)	St. John's University

DESCRIPTION OF COURSE OFFERINGS

Courses are offered based on the following conditions:

- Budgetary approval required for new courses.
- Sequential courses beyond the first year with an enrollment of 12 or fewer students are subject to administrative and Board of Education review.
- First-level courses and elective courses must have an enrollment of at least 15 students.

ART

ADVANCED PLACEMENT AND COLLEGE-LEVEL COURSES

ADVANCED PLACEMENT ART HISTORY

Prerequisite: None

1 year, 1 credit

Weight: 1.16

Grades 11-12

Elective

This course explores such topics as the nature of art, its uses, its meanings, art making and responses to art. Through investigation of diverse artistic traditions of cultures from prehistory to the present, the course fosters in-depth and holistic understanding of the history of art from a global perspective. Students learn and apply skills of visual, contextual, and comparative analysis to engage with a variety of art forms, constructing understanding of individual works and interconnections of art-making processes and products throughout history. *Students are required to take the College Board Advanced Placement Examination.*

ADVANCED PLACEMENT ART AND DESIGN

Prerequisite: Studio Art 3 and/or Departmental Approval

1 year, 1 credit

Weight: 1.16

Grade 12

Elective

Advanced Placement Studio Art enables highly motivated students to do college-level work while still in high school. This course is intended for students seriously committed to studying art. The Advanced Placement Program offers students the opportunity to complete a portfolio in the following areas: 2D Art and Design (includes Photography), Drawing, and 3D Art and Design. This course may be taken for a double period for two credits. *Students are required to present a College Board Advanced Placement Portfolio.*

ARCHITECTURAL DESIGN AND DRAWING 3: INTRODUCTION TO ARCHITECTURE AND CONSTRUCTION (EMHS)

Prerequisite: Architectural Design and Drawing 1 and 2

1 year, 1 credit

Weight: 1.16

Grades 11-12

Elective

This is an introduction to elementary concepts, literacy, and graphics in the architectural and construction field. This elective course is for students who have never taken any hand drawing/drafting and Computer Aided Drafting (CAD). The course will provide a hands-on experience in architectural and construction drawing/drafting, sketching, model building, orthographic project. The use of reading scales, lengths, areas, and volumes in drawings is developed to help students visualize and understand building elements and plans. The course will include basic CAD fundamentals, site visits and future employment requirements and opportunities for those interested in the major. *Upon successful completion of this course, students may earn up to three college credits from Farmingdale State College.*

PHOTOGRAPHY 3

Prerequisite: Photography 1 and 2 and/or Departmental Approval

1 year, 1 credit

Weight: 1.16

Grades 11-12

Elective

This course is designed to encourage students to use the camera creatively. Students become more familiar with the technical aspects of photography by working with digital techniques, including lighting, composition, printing and enlarging, cropping, mounting, and altering images with Adobe Photoshop. Students must have access to a digital camera. *Upon successful completion of this course, students may earn up to three college credits from Farmingdale State College.*

STUDIO ART 3: INTRODUCTION TO DRAWING

Prerequisite: Studio Art 2

1 year, 1 credit

Weight: 1.16

Grades 11-12

Elective

Studio Art 3 is designed for the art major seeking to complete a four-or-five-year sequence in art studies. This course provides an opportunity for a wide variety of in-depth experiences in the area of drawing. Students create work using pencil, color pencil, charcoal, and chalk pastels. Throughout this course, discussions of artists and art movements are emphasized. This course may be taken for a double period for two East Meadow credits. *Upon successful completion of this course, students may earn up to three college credits from Farmingdale State College.*

ADDITIONAL ART COURSES

ARCHITECTURAL DESIGN AND DRAWING 1 (EMHS) Prerequisite: None	1 year, 1 credit Weight: 1.05	Grades 9-12 Elective
--	----------------------------------	-------------------------

This introductory course is designed to develop skills in technical drawing and architecture. Included are problem solving, creative design in various technical drawing areas, architectural design, floor plans, and 3D model houses.

ARCHITECTURAL DESIGN AND DRAWING 2 (EMHS) Prerequisite: Architectural Design and Drawing 1	1 year, 1 credit Weight: 1.05	Grades 10-12 Elective
--	----------------------------------	--------------------------

Architectural Design and Drawing 2 explores advanced problems in creative product design using various methods: inks, markers, and watercolors. Students are presented with advanced design problems in architectural illustration and advanced 3D model houses. Students are also given an introduction to Building Information Modeling, i.e., AutoCAD and Revit.

ARCHITECTURAL DESIGN AND DRAWING 4 (EMHS) Prerequisite: Architectural Design and Drawing 3	1 year, 1 credit Weight: 1.05	Grade 12 Elective
--	----------------------------------	----------------------

Students work on advanced architectural problems, as well as independent and special projects. Students also continue to expand upon their knowledge of Building Information Modeling software.

ARTS EXPLORATION Prerequisite: None	1 year, ½ credit Weight: 1.05	Grade 9 Elective
---	----------------------------------	---------------------

This art course is a year-long exploration with an emphasis on the visual arts. It aims to provide a natural integration of the arts with other areas of the ninth-grade curriculum. The course is designed to meet every other day, aligning lessons with the New York State Standards in the Arts.

CREATIVE CRAFTS 1 Prerequisite: None	1 year, 1 credit Weight: 1.05	Grades 9-12 Elective
--	----------------------------------	-------------------------

Students explore various craft areas, including: pottery and jewelry making, book making, fiber arts, collage, and working with paper.

CREATIVE CRAFTS 2 Prerequisite: Creative Crafts 1	1 year, 1 credit Weight: 1.05	Grades 10-12 Elective
---	----------------------------------	--------------------------

This course concentrates on the development of creative and technical skills. Students create original designs in the various craft areas. Projects include pottery and jewelry making, bookbinding, and work in fiber arts.

CREATIVE CRAFTS 3 Prerequisite: Creative Crafts 2	1 year, 1 credit Weight: 1.05	Grades 11-12 Elective
---	----------------------------------	--------------------------

Students have the opportunity to further develop their craft skills allowing for a more specialized concentration. Advanced work in pottery, jewelry making, bookbinding, and fiber arts is included.

CREATIVE CRAFTS 4 Prerequisite: Creative Crafts 3	1 year, 1 credit Weight: 1.05	Grade 12 Elective
---	----------------------------------	----------------------

This course offers students the opportunity to develop their individual skills and personal expression using craft media. Students can choose an area of interest and create an individualized course of study.

CREATIVE EXPERIENCE (EMHS)

Prerequisite: None

1 year, 1 credit

Weight: 1.05

Grades 11-12

Elective

Creative Experience is a one-year course of study which serves to include and integrate a variety of artistic disciplines. This course offers a hands-on experience, providing students with an opportunity to recognize and appreciate the artistic connections that exist among a variety of genres and media throughout history. NOTE: The District Art/Music requirement calls for all students to take a minimum of two credits of Art or Music, or 1 credit of each of Art and Music. One unit of Creative Experience may be used to satisfy this requirement in lieu of two units of Art and/or Music.

DIGITAL ARTS AND MULTIMEDIA (WTCHS)

Prerequisite: None

1 year, 1 credit

Weight: 1.05

Grade 9

Elective

This course gives students an opportunity to take advantage of both digital and non-digital art media. Students work primarily in the computer lab using the Adobe Creative Suite of software, specifically Adobe Photoshop. Projects stress the use of software as an artistic medium. In addition, select projects merge the digital work with traditional art materials to create multi-media projects.

DIGITAL DESIGN AND ANIMATION

Prerequisite: Digital Arts and Multimedia, Graphic Design and/or Multimedia 1 (Photoshop experience is necessary)

1 year, 1 credit

Weight: 1.05

Grades 10-12

Elective

This course is recommended for all students interested in the creative process of digital animation through the fusion of art and technology. Students will create original film animations using digital cameras, computers, and the latest software. Several techniques will explore traditional cut paper style animations, Claymation and more advanced methods using a digital format. The computer software programs will include Toon Boom, iMovie, Photoshop, and Garage Band. These programs will be used to produce creative multimedia interactive presentations.

FASHION DESIGN/ILLUSTRATION (WTCHS)

Prerequisite: Studio Art 1 or Creative Crafts 1

1 year, ½ credit

Weight: 1.05

Grades 10-12

Elective

This course is designed as an introduction to design and illustrative drawing for the student who has an interest in fashion. Special emphasis is placed on fashion history, drawing from a model, and garment and accessories design.

GRAPHIC DESIGN

Prerequisite: Digital Arts and Multimedia, Multimedia 1, Photography 1 and /or Studio Art 1

1 year, 1 credit

Weight: 1.05

Grades 10-12

Elective

This course is an introduction to the use of the computer in art and design. Through exploration of the Adobe Photoshop and Illustrator software, students scan, generate, manipulate, and alter images. A varied selection of projects helps students to build an original and diverse digital portfolio. Individuality and self-expression are emphasized throughout this course.

MULTIMEDIA 1 (EMHS)

Prerequisite: None

1 year, 1 credit

Weight: 1.05

Grades 9-12

Elective

This course allows students to learn computer programs such as Adobe Photoshop and iMovie while exploring basic design techniques related to the visual arts and business. Emphasis is placed on the visual components of computer graphics, animation, multimedia presentations, and desktop publishing.

PHOTOGRAPHY 1

Prerequisite: Studio Art 1 is recommended

1 year, 1 credit

Weight: 1.05

Grades 9-12

Elective

Photography 1 is a comprehensive course which introduces students to the history of photography and explores a variety of photographic techniques using the cameras from a cell phone or tablet and a variety of downloadable photography applications. All students must have access to a cell phone or tablet. Photography 1 is the foundation course that leads to more advanced study in a photography sequence including college level courses.

PHOTOGRAPHY 2

Prerequisite: Photography 1

1 year, 1 credit

Weight: 1.05

Grades 10-12

Elective

This course is designed to encourage students to use the camera creatively. Students become more familiar with the technical aspects of photography by working with digital techniques, including lighting, composition, printing and enlarging, cropping, mounting, and altering images with Adobe Photoshop. Students must have access to a digital camera.

PHOTOGRAPHY 4

Prerequisite: Photography 3

1 year, 1 credit

Weight: 1.05

Grade 12

Elective

Building on skills learned in earlier photography classes, this course investigates the practice of photography as an expressive and descriptive art media. Individuality and self-expression are emphasized throughout this course. Students should have access to a digital camera.

PRINTMAKING

Prerequisite: Any Level 1 Art Class

1 semester, ½ credit

Weight: 1.05

Grades 10-12

Elective

This course is an introduction to a variety of printmaking methods. Students gain an understanding of linoleum printing, etching, mono-printing and screen printing.

SCULPTURE

Prerequisite: Any Level 1 Art Class

1 semester, ½ credit

Weight: 1.05

Grades 10-12

Elective

In this course, students explore space and volume in three dimensions. Emphasis is placed on the creative use of a variety of media, including clay, wood, and found objects.



STUDIO ART 1

Prerequisite: None

1 year, 1 credit

Weight: 1.05

Grades 9-12

Elective

This course provides an introduction to the fundamentals of drawing, painting, color, design, and sculpture. It develops skills in the use of various media. Appreciation and creative expression in design and representation are stressed. Studio Art 1 is required for those planning to pursue a major sequence in art.

STUDIO ART 2

Prerequisite: Studio Art 1

1 year, 1 credit

Weight: 1.05

Grades 10-12

Elective

Studio Art 2 provides instruction in drawing, painting, and two-dimensional design. While applying their creative energies in a variety of media, students develop individual talents and skills. Each student executes a series of projects in a variety of media.

STUDIO ART 4

Prerequisite: Studio Art 3

1 year, 1 credit

Weight: 1.05

Grade 12

Elective

Building on skills learned in earlier studio art classes, this course investigates the practice of drawing and painting as expressive and descriptive art media. Students use a variety of materials and techniques, learning about the past, present, and (possible) future use of drawing and painting. This course may be taken for a double period for two credits.

THEATRICAL DESIGN (EMHS)

Prerequisite: Any high school art class, cabinet making, or active participation in middle school tech crew

1 year, 1 credit

Weight: 1.05

Grades 10-12

Elective

In this one-year course, students study theatrical stage design and construction techniques. Some students are trained to safely operate power tools and use these tools to create large scale theater sets, as well as small and medium size stage props. Students who prefer not to use power tools participate in the artistic aspect of set building by painting, applying fabrics, and adding a variety of decorative elements to the scenes being constructed.

As members of the tech crew, students learn how to work behind the scenes during performances. **Mandatory participation** is required in both the fall and spring theater productions. During these performances, students move set pieces to their appropriate locations between scenes.

YEARBOOK

Prerequisite: Departmental Approval

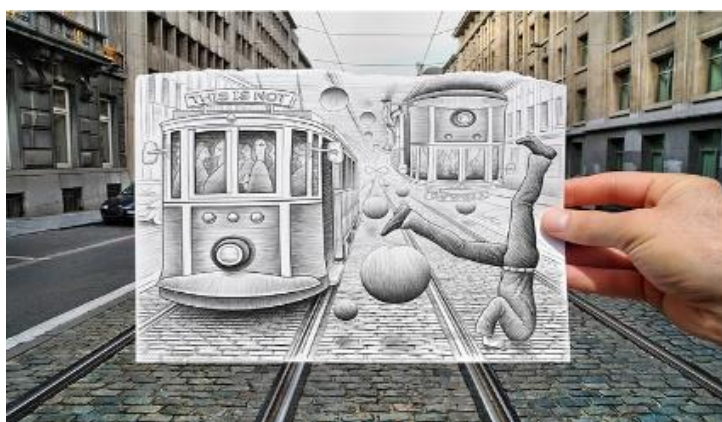
1 year, 1 credit

Weight: 1.05

Grade 12

Elective

Students learn all skills necessary to produce a high-quality yearbook using online page layout and design editing software. In addition, students design, create, and publish the official yearbook, which commemorates our seniors' high school career. The students are assigned specific roles and are responsible for the collection of images and data, file management, page creation/layout, proofing, and editing. Various other administrative responsibilities are established to ensure prescribed deadlines are met to produce a timely yearbook.



BUSINESS & CAREER PROGRAMS



Students interested in joining the East Meadow School District NAF Academy of Finance (AOF), please see [high school website under Important Links](#) for requirements and NAFTrack certification. See last page in this section for AOF course checklist.



Please review CTE chart (p. 9) as most courses within our Business, Engineering, and Technology programs lead to pathway certifications. These certifications allow students opportunities to earn a CTE Endorsement diploma.

BUSINESS COURSES

BUSINESS MANAGEMENT

Prerequisite: None

1 year, 1 credit
Weight: 1.05

Grades 10-12
Elective

This course provides students with the opportunity to study the ownership and operation of a small business enterprise as well as exploring the complexities of multi-national conglomerates. Business ownership structures, organizational models, entrepreneurship, stock market concepts, ethics, economic principles, and marketing fundamentals are some of the topics explored. The students utilize computer applications, online business simulations, attend field trips, learn from guest speakers, and participate in business-based competitions to facilitate “real life” experience as business owners.

CAREERS AND FINANCE (CFM)

Prerequisite: None

1 year, 1 credit
Weight: 1.05

Grades 9-12
Elective

This course emphasizes career planning and lifelong personal goals. Career planning is implemented by investigating students’ interests, career exploration (skill set development), the college search and application process, resume preparation, job applications, W-4 form components, etc. By creating a roadmap for students’ progression through high school, all students understand what is needed for post-secondary success. Financial literacy and money management skills are also facilitated to allow students to become informed and knowledgeable consumers and citizens, as well as, to learn about careers in financial planning. General principles are combined with practical applications to develop personal financial literacy in various topics including budgeting, investments (savings), payroll/benefits, checking, taxation, consumer credit and protection, and insurance.

CAREER SEMINAR (WTCHS)

Prerequisite: Careers and Finance, Office Internship, and Department Approval

1 year, 1 credit
Weight: 1.05

Grade 12
Elective

Students will engage in work-based learning opportunities to gain knowledge and develop a variety of skills leading toward real-world applications and future employability. Students will meet daily for a 1-period session to explore career options and reflect on work-based experiences within the community that will narrow the gap between theory and practice.

COMPUTER APPLICATIONS

Prerequisite: None

1 semester, ½ credit
Weight: 1.05

Grades 9-12
Elective

Students will explore the Microsoft Office Suite: Word, Power Point, Excel, etc. with an emphasis placed on developing presentations, resume writing, formatting letters, flyers, posters, graphical presentations, and communication skills. Students will learn how these skills will be utilized both in college and in the workplace careers.

DECA	1 semester, ½ credit (EMHS)	Grades 10-12
Prerequisite: None	1 semester, ½ credit (WTCHS)	Grades 9-12
	Weight: 1.05	Elective

This class is specially designed for all DECA club members who are interested in competing in regional, state, and national business events. The course briefly reviews all major aspects of business, including economics, accounting, marketing, management, law, and ethics so students can be successful on DECA examinations. This interactive course also allows students to rehearse role-playing and sharpen their presentation skills to compete and succeed at every level of competition.

FASHION MERCHANDISING	1 year, 1 credit	Grades 10-12
Prerequisite: None	Weight: 1.05	Elective

If you love fashion, take a behind-the-scenes look at what it takes to make it in the world of designers, models, and mayhem. With the use of technology, students are exposed to the ever-changing world of fashion, the fundamental skills needed for this industry, and the latest trends and happenings in the fashion world. Students create various window displays within the school and are exposed to the fashion industry through various field trips including visits to the Fashion Institute of Technology and the garment district.

FINANCIAL LITERACY	1 semester, ½ credit	Grades 10-12
Prerequisite: None	Weight: 1.05	Elective

This course provides students with the skills and competencies needed to be financially literate and consumer savvy. An overview of the financial and securities industry is facilitated, which includes investment banking and financial markets, business ownership, and ethics in finance. Students can take part in a hands-on interactive environment that allows them to trade stocks via virtual websites. The class also explores investing strategies outside the direct major financial sectors, such as mutual funds, treasury notes, real estate, and commodities including careers in the field of finance.

HOSPITALITY AND TOURISM	1 semester, ½ credit	Grades 10-12
Prerequisite: None	Weight: 1.05	Elective

This course provides students with a hands-on project-driven introduction to the major segments of the hospitality, tourism, and entertainment industries. Within the context of the industry this course focuses on creating, developing, designing, marketing, promoting, and selling a variety of attractions to various target markets. The students will also utilize various computer applications, attend field trips, and listen to guest speakers to gain insight into this multibillion-dollar industry.

INTRODUCTION TO LAW AND TECHNOLOGY (EMHS)	1 year, 1 credit	Grades 9-10
Prerequisite: None	Weight 1.05	Elective

Every student should know his/her legal rights and be on the cutting edge of technology. This course explores our legal framework through an interdisciplinary teaching approach comprising both the social studies and business departments and is designed to improve student research, writing, and presentation skills. The multimedia applications focus integrates relevant technology to develop presentations related to legal and contemporary issues. General areas of study: The Bill of Rights, school law, criminal law, and civil law. Students use a multitude of research techniques including using Microsoft Word, PowerPoint, Publisher, and Adobe Photoshop to develop and enhance law-related computer projects. Work-based experiences include legal guest speakers, law related field trips, and selected students can join the Nassau County Youth Court Program and participate in the Eastern District of NY Justice Institute for a one-week summer program at Touro College.

MULTIMEDIA 1 (EMHS)	1 year, 1 credit	Grades 9-12
Prerequisite: None	Weight 1.05	Elective

This course introduces students to the basic techniques of state-of-the-art computer software programs used in the classroom and workplace. Students develop computer skills which can be used for creating dynamic PowerPoint presentations, digitally manipulating images using Adobe Photoshop software, designing multimedia publications, and desktop publishing in preparation for web design in Multimedia 2 in the following year. Students learn how to use various technologies and explore design techniques as they relate to the visual arts and business. This course will fulfill an Art credit.

MULTIMEDIA 2	1 year, 1 credit	Grades 10-12
Prerequisite: None	Weight: 1.05	Elective

This course introduces students to advanced techniques of state-of-the-art computer software programs used in the classroom and in the workplace. Students develop computer skills that can be used for creating multifaceted computer graphics, multimedia presentations, HTML coding, and webpage design using Adobe Illustrator, Photoshop, and Dreamweaver software. The projects apply to real-life situations and personal portfolio development. These skills give a concrete foundation for students to progress in developing multimedia portfolios for colleges.

OFFICE INTERNSHIP	1 year, 1 credit	Grades 9-12
Prerequisite: None	Weight: 1.05	Elective

This course is designed to provide practical experience in real-world office administration skills. Our school offices serve as authentic venues to facilitate this office work experience.

SENIOR FUTURES (CFM)	1 semester, ½ credit	Grades 11-12
Prerequisite: None	Weight: 1.05	Elective

This course emphasizes career, college planning, and money management. We will investigate student interests and explore related careers. This will lead us into the college search and the common application process including the college essay, activity section, and other related college or career applications. Resume, cover letter preparation, job applications, etc. will be instructed upon so students understand what is needed for future success. Financial literacy and money management skills will also be taught to assist students in becoming informed and knowledgeable graduates, college enrollees, future employees, consumers, and citizens. Students will learn about financial independence including understanding the basics of credit and debt. Practical applications to develop financial literacy and to assist students with scholarships and financial aid applications will also be facilitated.

SPORTS & EVENT MARKETING 1	1 semester, ½ credit	Grades 10-12
Prerequisite: None	Weight: 1.05	Elective

This half-year course is designed for students with an interest in the sports industry and its related careers. The sports and entertainment industry plays a large role in our society and its reach has the potential to impact us on a daily basis. Through this course, students gain an understanding of basic marketing principles using examples found in the business of sports. The exploration of these principles is studied through field trips and a hands-on project-oriented environment. Classroom lectures, class projects, case studies, and internet simulations cover topics such as marketing principles, market research, market segmentation, branding and name recognition, and sports products and services.

SPORTS & EVENT MARKETING 2	1 semester, ½ credit	Grades 10-12
Prerequisite: None	Weight: 1.05	Elective

This half-year course is designed for students who wish to enhance their basic understanding of marketing principles, the business of sports, event marketing and entertainment venue management. Through this course, students are provided with an in-depth analysis of sports and event venue management by exploring topics such as sponsorships, endorsements, public relations, ethics, social responsibility, budgeting, and stadium financing and construction. The studies of these topics are applied in an active environment through field trips, class projects, internet simulations, and general classroom lectures.

TRIAL LAW (EMHS)	1 year, 1 credit	Grades 10-12
Prerequisite: None	Weight: 1.05	Elective

This course is designed for students to investigate the foundations of our trial system. Throughout the year, students research our court system and perform mock trials for hands-on experience. The mock trial preparation provides a technical introduction to the major components of a trial: opening statements, direct and cross examinations, and closing arguments. Oral presentations are designed to assess a student's comprehension of course content through the use of various multimedia tools including PowerPoint, Photoshop, and Inspiration.

COLLEGE-LEVEL COURSES

COLLEGE ACCOUNTING

Prerequisite: High school average of 80% or better

1 year, 1 credit

Weight: 1.16

Grades 11-12

Elective

This course is recommended for any student interested in pursuing a career in business or accounting. Accounting is the planning, recording, analyzing, and interpreting of all financial information. A planned process for providing financial information that is useful to the management is called the accounting system. Upon completion of this course, students understand the accounting system under Generally Accepted Accounting Principles (GAAP) and the processing of transactions through and including financial statement presentation and analysis. *Upon successful completion of this course, students may earn up to six college credits from LIU Post.*

COLLEGE BUSINESS LAW

Prerequisite: None

1 year, 1 credit

Weight: 1.16

Grades 11-12

Elective

Students study criminal and civil issues with an emphasis on business law. This course explores how law affects everyday life. Topics covered include origins of our courts and laws and how ethics affect our law, torts, contracts, consumer, property, marriage, international, agency, and employment law. Students learn how business law affects individuals and business organizations. *Upon successful completion of this course, students may earn up to three college credits from LIU Post.*

COLLEGE MARKETING

Prerequisite: None

1 year, 1 credit

Weight: 1.16

Grades 11-12

Elective

This comprehensive project-oriented course is intended for *dedicated* students intent on learning the complexities and varied contemporary issues within the marketing industry. The following components are highlighted: market segmentation, marketing research, advertising and design, promotional techniques, mobile marketing (including social media), distribution, sales, pricing, ethics, pop culture, and e-commerce. The students will utilize computer applications, attend field trips, hear from guest speakers, and create portfolios relating to this dynamic industry. *Upon successful completion of this course, students may earn up to three college credits from LIU Post.*

COMPUTER LITERACY

Prerequisite: None

1 semester, ½ credit

Weight: 1.16

Grades 11-12

Elective

In this rigorous course, students will fully explore the powerful potential of Microsoft Office Suite: Excel, Word, PowerPoint, and Access. Emphasis is placed on developing presentations, resume writing, formatting letter styles, research documents, budgeting, database development, flyers, and much more. After students are trained in the Microsoft Office Suite, they can take the Microsoft Certified Application Specialist/Expert exams through the Microsoft Business Certification Program and become recognized as a certified Microsoft Office Specialist and/or Expert. With this certification, students are recognized as possessing a mastery level of knowledge in the Microsoft Office Suite and remain competitive in both the academic and professional environments. Students can and have become NY State and Global Microsoft Champions. *Upon successful completion of this course, students may earn up to three college credits from LIU Post.*

CONTEMPORARY BUSINESS AND ECONOMICS/GOVERNMENT

Prerequisite: None

1 year, 1 credit

Weight: 1.16

Grade 12

Elective

Note: This course can be taken in lieu of the required participation in Government and Economics courses.

This course provides students with an introduction to the key concepts of finance, economics, and economic systems. The interrelated activities of supply and demand, profit, costs, including the relationship of labor and business will be facilitated. Factors that influence the success of businesses and products including the various forms of business ownership will allow students to understand how entrepreneurship and competition exist in a global economy. Students also examine careers in business, both as employees and business owners. In addition, students learn about participation in government and the interaction of society and government at the local, state, and federal levels. *Upon successful completion of this course, students may earn up to six credits from LIU Post.*

FASHION MERCHANDISING 2 & 3 (EMHS)

Prerequisite: Fashion Merchandising 1 required for Fashion Merchandising 2;
Fashion Merchandising 2 required for Fashion Merchandising 3

1 year, 1 credit
Weight: 1.16

Grades 10-12
Elective

These courses explore the relationship of the fashion industry to society and consumer demand. Whether working for a fashion brand or starting a business in fashion, these courses explore how a line is created from the research and design stage to the marketing, sourcing, production, and distribution stage. They will provide insight on how the industry is organized, how apparel and accessory companies operate, and how they are affected by changing technology and globalization. These courses will also have students analyze residential properties to design attractive and efficient plans for a client. Students will apply similar principles of design used in the clothing industry to the interior design business. *Upon successful completion of each course (Fashion Merchandising 2, Fashion Merchandising 3), students may earn up to three college credits from LIU Post.*

MICROSOFT CERTIFICATION (EMHS)

Prerequisite: None

1 year, 1 credit
Weight: 1.16

Grades 11-12
Elective

This course and certification platform is available to **ALL** students allowing them to be competitive in both academic and professional environments recognizing a mastery level knowledge in the Microsoft Suite. Students will explore the powerful potential of Word, PowerPoint, Excel, and Access. Emphasis is on presentations, resume writing, formatting letter styles, research documents and techniques, budgeting, database development, flyers, etc. After students are trained in the Microsoft Office Suite, they can take six Specialist/Expert exams through the Microsoft Business Certification Program. Students can and have become NY State and Global Microsoft Champions. They also can produce videos in Adobe Premier or produce a website using the Adobe Suite. *Upon successful completion of this course, students may earn up to three college credits from LIU Post.*

MULTIMEDIA 3

Prerequisite: None

1 year, 1 credit
Weight: 1.16

Grades 11-12
Elective

This college-level course is project oriented and incorporates the most up-to-date software in the Adobe Suite to create dynamic, interactive web pages, and other multimedia projects. Advanced features in Dreamweaver are used to create web pages with the use of HTML coding and the CSS editor. Students will create animations and movies using Animate. In addition, students will learn to use MIT APP Inventor to build fully functional mobile apps for smart phones and tablets. Throughout the course, students will utilize Photoshop and Illustrator in order to enhance web design projects. These programs are used in college, within the computer industry, and in many other careers which allow students to possess employable skills for the future. Students create a portfolio of their work. *Upon successful completion of the course, students may earn up to six college credits from LIU Post.*

VIRTUAL ENTERPRISE

Prerequisite: None

1 year, 1 credit
Weight: 1.16

Grades 11-12
Elective

This course is designed around a virtual business environment, allowing students to experience all facets of employment and entrepreneurship in an actual business setting while remaining in the classroom. Students enrolled in this course work collaboratively to develop an original business concept plan, while becoming immersed in every aspect of business management, including human resources, accounting, product development, production, distribution, ethics, marketing, and sales. During the daily classroom simulation, students engage in trade with other virtual companies and firms around the world, enabling them to understand how employees, work/group teams, and departments interact and work together toward the achievement of established company goals. Students are exposed to a rigorous curriculum and learn about financial risk, which is richly enhanced by hands-on applications. The entrepreneurial skills and experiences gained from this course may better prepare students for advancement to a post-secondary institution and a career in business. *Upon successful completion of this course, students may earn up to six college credits from LIU Post.*

EAST MEADOW SCHOOL DISTRICT
Student Course Checklist: Academy of Finance (AOF)



****Students in AOF must be enrolled in one of the courses below each year grades 10-12****

To Become AOF NAFTRACK Certified:

Option 1: 1 **NAF Bus. Courses w/Exams** & Culminating Projects & 3 **College Equivalents**** Business Courses & Internship

Option 2: 2 **NAF Bus. Courses w/Exams** & Culminating Projects & 2 **College Equivalents**** Business Courses & Internship

Option 3: 3 **NAF Bus. Courses w/Exams** & Culminating Projects & 1 **College Equivalents**** Business Course & Internship

Option 4: 4 **NAF Bus. Courses w/Exams** & Culminating Projects & Internship

Option 5: **Program of Study** & 3 **College Equivalents**** Business Courses & Internship

AOF Member without Certification: Business Courses/Credits & Internship (in total 4 credits)

AOF Member & NAFTRACK Checklist	NAF Exam	1/2 yr.	9	10	11	12
Business Management	<i>Entrepreneurship</i>			10	11	12
Careers & Finance (CFM)	<i>Financial Planning</i>		9	10	11	12
* College Accounting 1 & 2 (6 credits)	<i>College Equivalent**</i>				11	12
* College Business Law (3 credits)	<i>College Equivalent** (possible Ethics Exam)</i>				11	12
* College Marketing (3 credits)	<i>College Equivalent**</i>				11	12
Computer Applications		1/2	9	10	11	12
* Computer Literacy (3 credits)	<i>College Equivalent**</i>	1/2			11	12
* Contemporary Business (6 credits) Note: See onsite director if exam needed	<i>College Equivalent** (possible Business Eco. Exam)</i>					12
DECA Class		1/2	9	10	11	12
Fashion Merchandising 1	<i>(see WTCHS onsite director)</i>			10	11	12
* Fashion Merchandising 2 (3 credits) * Fashion 3 EMHS only (3 credits)	<i>Event Planning (can only count here or in Sports & Event Marketing or Hospitality & Tourism)</i>				11	12
Financial Literacy	<i>Principles of Finance</i>	1/2		10	11	12
Hospitality & Tourism	<i>Event Planning (can only count here or in Sports & Event Marketing or Fashion)</i>	1/2		10	11	12
Introduction to Law and Technology (EMHS)			9	10	11	12
Multimedia 1 (EMHS)			9	10	11	12
Multimedia 2 (or MM3) or Intro. to Computer Graphics (WTCHS)	<i>Graphic Design</i>			10	11	12
* Multimedia 3 (6 credits) * Robotics 3 credits (if Lenovo Project is completed)	<i>Lenovo Project – Program of Study Equivalent</i>				11	12
* Microsoft Certification (EMHS) (or Computer Literacy 1/2 yr.)	<i>College Equivalent**</i>					12
Sports & Event Marketing 1 & 2 (both 1 & 2 required for NAF exam)	<i>Event Planning (can only count here or in Fashion or Hospitality & Tourism)</i>	1/2 Credit each		10	11	12
Trial Law (EMHS)	<i>(possible Ethics Exam)</i>			10	11	12
* Virtual Enterprise (6 credits)	<i>Program of Study</i>				11	12
AP Statistics	<i>Same as College Equivalent**</i>				11	12

*College level Course (3 credits unless otherwise designated)

** Approved NAF College Equivalent

Students can take NAF Exams 2 times within a 6-month period if needed

****Students in AOF must be enrolled in one of the above courses each year (Grades 10-12)****

ENGINEERING PREPARATORY

This STEM program is designed to prepare students for all college engineering disciplines through the study of science, technology, engineering, and mathematics (STEM). Students will also gain the skills and knowledge necessary to enter the industry as electrical, mechanical, or electromechanical technicians.

TECHNOLOGY EDUCATION (WTCHS)

Prerequisite: None

1 year, 1 credit

Weight: 1.05

Grades 9-12

Elective

This course is an exploratory program of instructional resources, materials, and systems. Students study the impact of technology on the world and society. Through hands-on activities and projects, the students will explore engineering disciplines, ethics, and communications in engineering, excel, basics in programming, various transportation systems, an introduction to structures, as well as design and manufacturing systems.

PRINCIPLES OF ENGINEERING

Prerequisite: None

1 year, 1 credit

Weight: 1.16

Grades 10-12

Elective

The goal of this course is for students to apply introductory mathematical and scientific principles to real-world problem solving. Examples of topics include: Multiview projection problems, velocity, statics, torque, force analysis (balsa wood structures), introduction to AutoCAD drawings, Inventor drawings, and 3-D printing. *Upon successful completion of this course, students may earn up to three college credits from Stony Brook University.*

MECHANICAL TECHNOLOGY DESIGN

Prerequisite: None

1 year, 1 credit

Weight: 1.16

Grades 11-12

Elective

This Mechanical Technology Course is based on Stony Brook University's Introduction to Mechanical Engineering. It gives students the opportunity to work on college type engineering problems along with hands-on engineering projects. Topics include force analysis, torque, momentum, work, power, energy, and fluids. Additionally, students will be working with AutoDesk and Inventor, 3-D printing, and designing structures. This course enables students to develop skills needed for creative thinking, problem solving, and teamwork. *Upon successful completion of this class, students can earn up to 3 college credits from Stony Brook University.*

ROBOTICS AND ELECTROMECHANICAL SYSTEMS

Prerequisite: None

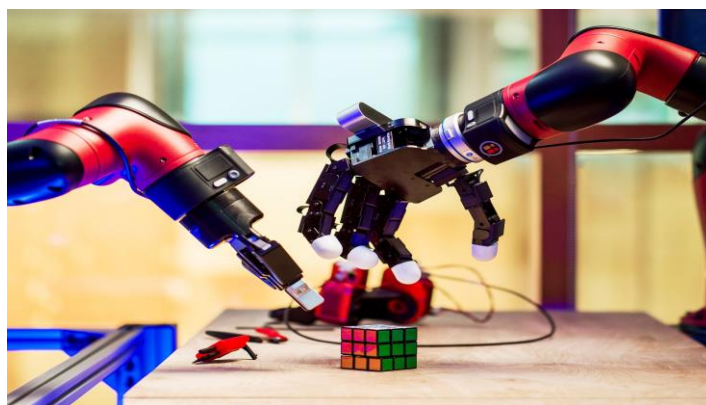
1 year, 1 credit

Weight: 1.16

Grade 12

Elective

This class allows students to engage in an electromechanical project in which they design and build a robot. Students will also have the opportunity to design and build smaller electromechanical devices. Examples of topics include: digital electronics, microprocessors, microcontrollers, sensors, software, and coding. *Upon successful completion of this course, students may earn up to three college credits from Stony Brook University.*



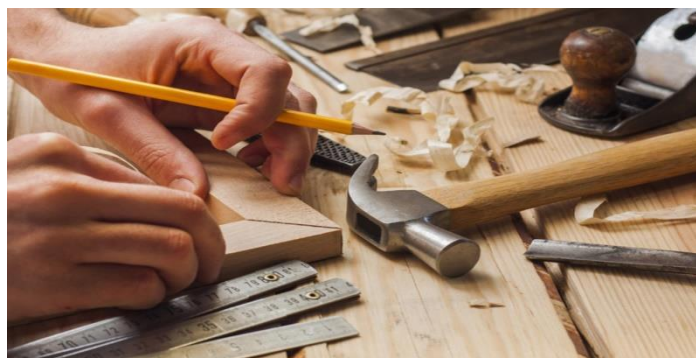
TECHNOLOGY AND TRADES

CARPENTRY 1 (WTCHS) Prerequisite: None - Refer to Description Below	1 year, 1 credit Weight: 1.05	Grades 9-12 Elective
CARPENTRY 2 (WTCHS) Prerequisite: Carpentry 1 - Refer to Description Below	1 year, 1 credit Weight: 1.05	Grades 10-12 Elective
CARPENTRY 3 (WTCHS) Prerequisite: Carpentry 1 & 2	1 year, 1 credit Weight: 1.05	Grades 11-12 Elective

Carpentry courses (1, 2, 3) are designed to provide hands-on training in the ever-changing building trades industry. New technology and building products are introduced, along with hand machinery and power equipment. Safety and proper tool usage are continually emphasized. Production methods for translating blueprints to wall plates, framing a model house to scale from the foundation, introduction of trade-related theory, and correlating construction of full-size projects, such as sheds, gazebos, and various major carpentry structures for both school and community, are included. A segment may be devoted to a program known as the “School to Work: Partnership with New York State Parks Department,” which involves construction of prefabricated structures for Jones Beach. Upon the completion of this course sequence, students are eligible to earn a Building Trades Certificate of Completion, which lists each student’s acquired skill and is held in high regard by both the trade unions and future employers. Assessment is through individual projects. These courses may be taken for a double period for two credits.

CABINETMAKING 1 (EMHS) Prerequisite: None - Refer to Description Below (2 periods)	1 year, 2 credits Weight: 1.05	Grades 10-12 Elective
CABINETMAKING 2 (EMHS) Prerequisite: Cabinetmaking 1 - Refer to Description Below (3 periods)	1 year, 3 credits Weight: 1.05	Grades 11-12 Elective
CABINETMAKING 3 (EMHS) Prerequisite: Cabinetmaking 1 & 2 (3 periods)	1 year, 3 credits Weight: 1.05	Grades 11-12 Elective

Cabinetmaking 1, 2, 3 teaches the skills that are necessary to be a cabinetmaker. Students build many projects for the community, school, and for their own families. Some of these projects include nightstands, small and large tables, desks, hutches, dry sinks, TV stands, stereo units, and many other fine pieces of furniture. In addition, students learn to design and construct kitchen cabinets, bathroom vanities, and plastic-laminated countertops and furniture. Students complete a portfolio which showcases projects completed in class. Skills acquired in this program can lead to employment in various cabinet shops and woodworking industries throughout Long Island. A segment of this occupational education course may be devoted to occupationally related math and related communication skills for the workplace. Contract projects also address carpentry skills. Upon completion of this course sequence, students are eligible to earn a Certificate of Completion in Carpentry and Cabinetmaking, which lists each student’s acquired skill and is held in high regard by both the trade unions and future employers.



ENGLISH LANGUAGE ARTS



REQUIRED ENGLISH COURSES

ENGLISH 9 1 year, 1 credit Grade 9
Prerequisite: None Weight: Dependent on Level Required

Students read complex literary and informational texts including novels, plays, short stories, poetry, and speeches by recognized authors. This curriculum includes expository writing, reinforcement of oral and written language skills, and continued development of research skills.

ENGLISH 10 1 year, 1 credit Grade 10
Prerequisite: English 9 Weight: Dependent on Level Required

Students study multicultural world literature through wide and deep reading of complex literary and informational texts. The novel, plays, poetry, speeches, and short stories serve as the basis for this literacy curriculum. Students deepen their understanding of various types of writing: persuasion, narration, exposition, and the development of the research paper.

ENGLISH 11 1 year, 1 credit Grade 11
Prerequisite: English 10 Weight: Dependent on Level Required

Students extend their perception of culture and perspective through reading 18th, 19th, and early-20th century American literature, Shakespeare, and complex informational texts. Composition and preparation for the English Language Arts Regents, with which the course concludes, are emphasized. This course emphasizes composition and preparation for the English Language Arts Regents at the conclusion of the year.

ENGLISH 12 1 year, 1 credit Grade 12
Prerequisite: English 11 Weight: Dependent on Level Required

English literature, world literature, and topics of inquiry are among the fields of study covered in this course. Major poets, playwrights, novelists, and essayists are studied thematically and across cultures. Portfolio activities are also conducted in this course, including a research paper, presentations, and independent reading, in addition to an individualized senior project at East Meadow High School only.

ENGLISH 12 / HUMANITIES (WTCHS) 1 year, 1 credit Grade 12
Prerequisite: English 11 Weight: 1.05 Required

The purpose of the course is to create a learning experience that adds depth and diversity to the students' understanding of English Language Arts. In addition to the study of novels, plays, poems, short stories, and essays, students pursue their learning through art, music, history, philosophy, and making use of a variety of resources including guest speakers. Topics include stories as both a manifestation of culture and a tool to shape it, the artist as a visionary, music as the weapon of culture and counterculture, and the power of the narrative.

ADVANCED PLACEMENT AND COLLEGE-LEVEL COURSES

ADVANCED PLACEMENT ENGLISH LANGUAGE AND COMPOSITION 1 year, 1 credit Grade 11
Prerequisite: Departmental Approval Weight: 1.16 Elective

This course concentrates on works of nonfiction. The reading material focuses on essays, biographies, and autobiographies. The emphasis of the writing component focuses on the development of skills analyzing the rhetoric of prose passages. Summer reading is required for this course. *This course concludes with the required Comprehensive English Regents Examination for 11th grade students and the Advanced Placement Examination in Language Composition.*

ADVANCED PLACEMENT ENGLISH LITERATURE AND COMPOSITION 1 year, 1 credit Grade 12
Prerequisite: Departmental Approval Weight: 1.16 Elective

This is a college-level course for students who have demonstrated their capabilities and interest in the study and analysis of literature, as well as a high degree of competency in writing. Selected works of British, American, and Continental literature are read. Frequent writing assignments are designed to develop the capacity to write coherent, graceful, and intelligent commentary on the reading. Summer reading is required for this course. *Students are required to take the College Board Advanced Placement Examination.*

ADVANCED PLACEMENT SEMINAR 1 year, 1 credit Grade 10
Prerequisite: Departmental Approval Weight: 1.16 Elective

This is a foundational course that engages students in cross-curricular conversations that explore the complexities of academic and real-world topics and issues by analyzing divergent perspectives. Using an inquiry framework, students practice reading and analyzing articles, research studies, and foundational, literary, and philosophical texts; listening to and viewing speeches, broadcasts, and personal accounts; and experiencing artistic works and performances. Students learn to synthesize information from multiple sources, develop their own perspectives in written essays, and design and deliver oral and visual presentations, both individually and as part of a team. Ultimately, the course aims to equip students with the power to analyze and evaluate information with accuracy and precision to craft and communicate evidence-based arguments. *Students are required to take the College Board Advanced Placement Examination.*

AMERICAN LITERATURE 1 year, 1 credit Grade 11
Prerequisite: English 10 and Departmental Approval Weight: 1.16 Elective

This course focuses on the study of American literary works. Emphasis is on composition, as well as preparation for the English Language Arts Comprehensive Regents examination that is administered at the end of the course. Summer reading is required. *Upon successful completion of this course, students may earn up to six college credits from LIU Post.*

ENGLISH LITERATURE (EMHS) 1 year, 1 credit Grade 12
Prerequisite: Departmental Approval Weight: 1.16 Elective

This course provides students with exposure to introductory college-level courses in literature and composition. Students read works of English and world literature, as well as respond to literary essays and critical reviews. Frequent writing assignments provide students with an opportunity to develop necessary skills for writing argumentative and persuasive and personal essays. The year culminates with a Senior Project Research paper. *Upon successful completion of this course, students may earn up to six college credits from LIU Post.*

SYRACUSE ENGLISH (WTCHS) 1 year, 1 credit Grade 12
Prerequisite: 90 average in English 11 and Departmental Approval Weight: 1.16 Elective

Syracuse University is a college-level course divided into two semesters. ETS 105 is a writing studio driven by a specific topic of inquiry in which students engage in experimentation with a variety of writing styles. Students are exposed to the work of their peers through the seminar method of editing. Personal observation papers, ethnographies, research papers, and literary analysis papers provide the framework for this course. ETS 141 is a course designed to explore “how” we read texts. It includes a survey of the history of literary criticism with emphasis given to recent movements: new criticism, deconstruction, reader-response theory, and feminist, historical and Marxist approaches. Summer reading is required. *Upon successful completion of this course, students enrolled may earn six college credits from Syracuse University.*

ADDITIONAL ENGLISH LANGUAGE ARTS COURSES

CREATIVE WRITING

Prerequisite: None

1 year, 1 credit (EMHS)
1 semester, ½ credit (WTCHS)
Weight: 1.05

Grades 11-12
Elective

This course places emphasis on individual and group investigation of techniques of good writing. It stresses the imaginative forms of writing, including description, narration, poetry, humor, and drama. Students are encouraged to develop creative imagination, clarity, and effectiveness of expression.

EXPLORING THE GRAPHIC NOVEL (WTCHS)

Prerequisite: None

1 semester, ½ credit
Weight: 1.05

Grades 11-12
Elective

Graphic novels are the fastest growing literary genre worldwide. Graphic novels are an infusion of art and literature and merge together the best of both artistic media. This course is designed to examine graphic texts as literature and seeks to define the graphic novel as a unique body of work. It is the aim of this class to explore both classical and contemporary cultural themes in graphic novels, analyze texts for meaning through language and art, and trace the history of storytelling through a wide variety of traditional and modern graphic novels.

FANTASY LITERATURE AND POP CULTURE (WTCHS)

Prerequisite: None

1 semester, ½ credit
Weight: 1.05

Grades 10-12
Elective

Fantasy is everywhere. Much of today's pop cultural landscape is saturated with fantasy. Hobbits, White Walkers, and Jedi (yes, Star Wars is primarily fantasy not Sci-Fi), dominate the entertainment industry. Fantasy sports from a growing enterprise at the intersection of business and athletics. But what *is* fantasy? What does it mean to be fantastical? Whether you're a casual fan of The Hunger Games and Harry Potter or you meet with friends for a fantasy draft party, or you have an entire collection of TokyoPop figurines, chances are you interact with fantasy more than you realize. Fantasy has filtered into the mainstream and it is here to stay. This course will look at traditional fantasy literature (The Lord of the Rings) and trace the evolution of the genre through contemporary examples like Game of Thrones through analyzing the implications of fantasy sports and modern advertising.

FILM STUDIES 1

Prerequisite: None

1 semester, ½ credit
Weight: 1.05

Grades 11-12
Elective

Film is not so different from literature. Both forms employ the art of storytelling to explore the rich mysteries of life, culture, and personality. This course explores American and International cinema through a study of genre, director, and era in an attempt to reveal film as the emerging contemporary literary form of the new century. Class viewings, analysis papers, note-taking, observation skills, and class discussion form the basics of this elective.

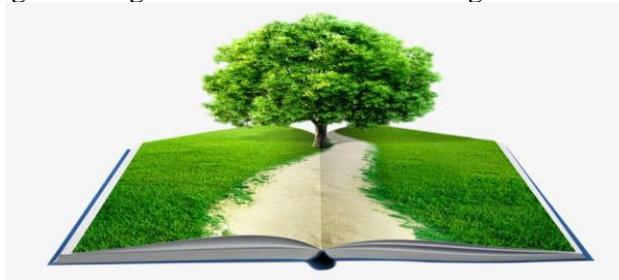
FILM STUDIES 2 (EMHS)

Prerequisite: None

1 semester, ½ credit
Weight: 1.05

Grades 11-12
Elective

This course builds on the foundation of Film Studies 1 by further exploring the use of basic filmmaking techniques to create and convey meaning in films. The relationship between literature and film explored in Film Studies 1 is broadened to include in-depth genre studies, the role of imagery and symbolism in films, and the role of film director as "author." Unlike Film Studies 1, this course affords students the opportunity to view multiple films by one director, including films directed by Kubrick, Hitchcock, Allen, Eastwood, Fellini, Spielberg, Lucas, Scorsese, and Coppola. Students in this class take on the role of the film critic and share insights during class discussions and through written film analyses.



JOURNALISM 1 (EMHS)	1 year, 1 credit	Grades 9-12
Prerequisite: None	Weight: 1.05	Elective

The course covers the fundamentals of news writing. This is an introductory course that provides a general overview of all aspects of journalism. This includes: writing (information, fact finding, and interview techniques), photography, advertising, layout, design, and publication. News articles written in this course are published in the school paper. There are multiple field experiences for this course including a Channel 12 newsroom tour, NBC studios tour, and a potential visit to the New York Times printing plant.

JOURNALISM 2 (EMHS)	1 year, 1 credit	Grades 10-12
Prerequisite: Journalism 1	Weight: 1.05	Elective

The focus for this course is to expand and apply the basic skills and information learned in Journalism 1 to actual production of articles in the Jet Gazette and special media-oriented projects. In the Journalism 2 class, students work in a laboratory setting using desktop publishing and lay-out programs to publish their written assignments. The prerequisite for this course is Journalism 1. There are multiple field experiences for this course including a Channel 12 newsroom tour, NBC studios tour, and a visit to the New York Times printing plant.

LITERARY NEW YORK, NEW YORK (WTCHS)	1 semester, ½ credit	Grades 11-12
Prerequisite: None	Weight: 1.05	Elective

This course focuses on exposing the students to the history, culture, and literature of New York City. It allows students the opportunity to explore the vast wealth of literature focused on this great city. In order to enhance their knowledge of New York City, the class explores literature that focuses on the writers who have employed the city as a character and not merely a setting. These writers include Arthur Miller, Neil Simon, E. L. Doctorow, Stephen Crane, Allen Ginsberg, Langston Hughes, Walt Whitman, and Hart Crane. The students learn about such New York-based literary movements such as the immigration movement, the Harlem Renaissance, and the Bohemian movement of the 1950s.

PUBLIC SPEAKING	1 year, 1 credit	Grades 9-12 (EMHS)
Prerequisite: None	1 semester, ½ credit	Grades 10-12 (WTCHS)
	Weight: 1.05	Elective

This course is designed as an introduction to the techniques, strategies, and preparations for oral and written speech. It is the aim of this course to offer students practical approaches to ease anxiety about speaking in front of an audience. Students examine a plethora of speech styles for a variety of audiences, including those in the academic, professional, and social realms.

SCIENCE FICTION, MYSTERY & HORROR (EMHS)	1 semester, ½ credit	Grades 11-12
Prerequisite: 9th and 10th Grade English	Weight: 1.05	Elective

This class uses literature to discuss the nature of society and its impact on the world around us. The works of Edgar Allen Poe are primary focus as they are the precursor to contemporary science fiction and horror writers. Students also examine fiction as well as nonfiction by such authors as Ray Bradbury, Isaac Asimov, Stephen King, Arthur Clarke, Philip K. Dick, and others. Students examine the concepts of horror and the macabre in relation to the American experience, as well as look at the impact and popularity of sci-fi movies and series.

SHAKESPEAREAN DRAMA (EMHS)	1 semester, ½ credit	Grades 10-12
Prerequisite: English 10	Weight: 1.05	Elective

This course focuses on the reading of Shakespearean plays and the staging, acting, and production of various scenes. A survey of genres of Shakespeare's art, the great tragedies, comedies, romances, and relevant poetry is also explored.

SPORTS LITERATURE (WTCHS)

Prerequisite: None

1 semester, ½ credit

Weight: 1.05

Grades 10-12

Elective

This class uses the lens of athletics to expose students to literature and journalism. In this class, students focus on various perspectives of athleticism, including the sportswriter, coach, player, and spectator. The authors of studied works include Mike Lupica, Rick Reilly, Jack Kinsella, and John Wooden.

THEATRE ARTS - INTRODUCTION

Prerequisite: None

1 year, 1 credit (EMHS)

1 semester, ½ credit (WTCHS)

Weight: 1.05

Grades 9-12

Elective

This course is designed to increase appreciation for the work put into a successful dramatic production and includes exposure to all areas of the theatre arts. Students read plays for dramatic understanding and address theater history from the early Greek dramatists to modern theater. There is work on projection, inflection, and movement in preparation for performing monologues and scenes. Understanding of the texts is also expressed through offstage and backstage activities, such as scenic design, publicity, and direction. This course may include trips to live performances.

THEATRE ARTS - ADVANCED

Prerequisite: Theatre Arts - Introduction

1 year, 1 credit (EMHS)

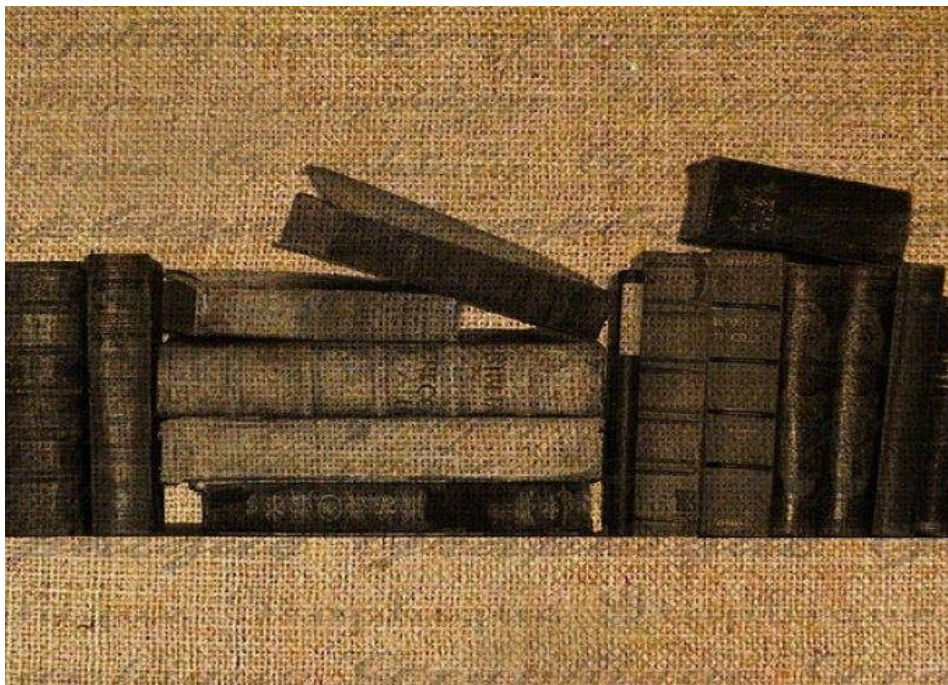
1 semester, ½ credit (WTCHS)

Weight: 1.05

Grades 10-12

Elective

This course builds upon work done in the introductory course and is geared strongly toward students interested in performance. Activities include direction of a one-act play and/or the writing of a scene for a number of performances. This course may include trips to live performances.



ENGLISH AS A NEW LANGUAGE (ENL) PROGRAM AT EAST MEADOW HIGH SCHOOL

Students whose native language is other than English and who need to demonstrate proficiency in speaking, listening comprehension, reading comprehension, and writing in English are placed in English as a New Language (ENL) courses to fulfill diploma requirements.

ENGLISH 9 Prerequisite: None	1 year, 1 credit Weight: 1.05	Grades 9-12 Required
--	----------------------------------	-------------------------

This course is designed for 9th grade English language learners and is supportive of all proficiency levels. Students read complex literary and informational texts including novels, plays, short stories, poetry, and speeches by recognized authors. This curriculum includes expository writing, reinforcement of oral and written language skills and continued development of research skills.

ENGLISH 10 Prerequisite: None	1 year, 1 credit Weight: 1.05	Grades 9-12 Required
---	----------------------------------	-------------------------

This course is designed for 10th grade English language learners and is supportive of all proficiency levels. Students study multicultural world literature through wide and deep reading of complex literary and informational texts. The novels, plays, poetry, speeches, and short stories serve as the basis for this literacy curriculum. Students deepen their understanding of various types of writing: persuasion, narration, exposition, and the development of the research paper.

ENGLISH 11 Prerequisite: None	1 year, 1 credit Weight: Dependent on level	Grades 9-12 Required
---	--	-------------------------

This course is designed for 11th grade English language learners and is supportive of all proficiency levels. Students extend their perception of culture and perspective through reading 18th, 19th and early 20th century American literature, Shakespeare, and complex informational texts. Composition and preparation for the English Language Arts Regents, with which the course concludes, are emphasized.

ENGLISH 12 Prerequisite: None	1 year, 1 credit Weight: 1.05	Grades 9-12 Required
---	----------------------------------	-------------------------

This course is designed for 12th grade English language learners and is supportive of all proficiency levels. English literature, world literature, and topics of inquiry are among the fields of study covered in this course. Major poets, playwrights, novelists, and essayists are studied thematically and across cultures. Portfolio activities, including a research paper, presentations, and independent reading, are also conducted in this course, in addition to an individualized senior project at East Meadow High School only.

ENGLISH FOUNDATIONS 1 Prerequisite: None	1 year, 1 credit Weight: 1.05	Grade 9-12 Elective
--	----------------------------------	------------------------

This course introduces students to the English language via development of the four basic skills: listening, speaking, reading, and writing. Emphasis is placed on the development of communicative competency within the school and society.

ENGLISH FOUNDATIONS 2 Prerequisite: None	1 year, 1 credit Weight: 1.05	Grade 9-12 Elective
--	----------------------------------	------------------------

This course is a continuation of English Foundations 1. Students will practice and improve their communication skills in the English language for both social and academic purposes through exploration of real-world topics.

ENGLISH PREPARATION

Prerequisite: None

1 year, 1 credit

Weight: 1.05

Grades 11-12

Elective

ENL students become familiar with all aspects of the NYS Regents Examination in English. Skills required for each competency are emphasized. Literary analysis, listening, reading comprehension, and writing development are the focus of instruction.

FUNDAMENTALS OF MATH

Prerequisite: None

1 year, 1 credit

Weight: 1.05

Grades 9-12

Elective

Projected based activities and the use of technology will be implemented to enhance the learning of this course. Topics include: Review of operations with whole numbers and integers, order of operations, operations with polynomials, solving algebraic equations, graphing linear equations and inequalities, and consumer math related topics.

ALGEBRA I WITH LAB

Prerequisite: None

1 year, 1 credit

Weight: 1.05

Grades 9-10

Required

This is a one-year course that measures the knowledge and skills needed for students to succeed in their first year of credit-bearing college courses. The course specifically measures the Mathematical Practices specified by NYS. In most cases, these practices require complex mathematical thinking with real-world situations. In Algebra I, the major work of the course includes those standards associated with the “algebra” and “functions” conceptual categories. Successful completion of this course and passing the Regents Exam are requirements for graduation in New York State. This course is designed to give students additional support.

FUNDAMENTALS OF BIOLOGY A & B

Prerequisite: None

1 semester each, ½ credit each

Weight 1.00

Grades 9-11

Elective

This 2-part course sequence reflects the content assessed within the Living Environment (soon to be Biology) curriculum. Students will learn the basic concepts of Biology including characteristics of life, parts of the cell, how traits are passed down from generation to generation, as well as how organisms interact with each other and their environment. This course will include a mix of hands-on laboratory activities, student collaboration, and online simulations to help them in their understanding of Biology in preparation for the Living Environment Regents course. Emphasis will be placed on science vocabulary acquisition and reading comprehension.

APPLIED PHYSICAL SCIENCE

Prerequisite: Living Environment Regents

1 year, 1 credit

Weight 1.00

Grades 10-12

Elective

The ENL Applied Physical Science course would provide students with 1 full credit of Science and explore the three other areas of Physical Science (Earth Science, Chemistry, and Physics) and offer supports for continued language acquisition. Students will learn about topics including matter and energy, motion and forces, atoms and elements, weather and climate, and rocks and minerals. This course will include a mix of hands-on laboratory activities, student collaboration, and online simulations to help them in their understanding of content.

LIVING ENVIRONMENT

Prerequisite: None

1 year, 1 credit

Weight: 1.05

Grades 9-12

Required

This course is based on the New York State Living Environment Core Curriculum. Teachers provide instruction in all required areas and select optional areas for the program. Students are required to take the NYS Regents Examination.

GLOBAL HISTORY I

Prerequisite: None

2 years, 2 credits

Weight: 1.05

Grades 9-10

Required

This course is designed for English Language Learners and focuses on the study of Global History and Geography. Upon the conclusion of the Global 10 course, students take the NYS Regents Exam in Global History and Geography.

U.S. HISTORY AND GOVERNMENT

Prerequisite: None

1 year, 1 credit

Weight: 1.05

Grade 11

Required

This course is designed to introduce English Language Learners to the government and history of the United States. Studies begin with an overview of pre-Colonial and Colonial America and focus on the events that led to America's independence from British rule. This course includes the study of the Constitution, the functions of the three branches of government, and changes in the economy from agricultural to industrial to technological. The most important domestic and foreign policies of American presidents and the role of the United States in today's world are included. At the end of this course, all students take the NYS Regents Exam in United States History and Government.

SOCIAL STUDIES COMPOSITION

Prerequisite: None

1 year, 1 credit

Weight: 1.05

Grades 10-12

Elective

The course is designed to assist ENL students in writing composition course that prepares students for the essay portions of the Social Studies Regents Exams. Themes common to both curricula are covered. Students present to the class, write essays, and read for information.



MATHEMATICS

REGENTS MATHEMATICS PROGRAMS

Required Math Courses (for accelerated eighth graders and Regents students entering Grade 9)

Students entering 9th grade begin a curriculum required by New York State for a high school Regents diploma with Advanced Designation. Students take three courses - Algebra I, Geometry, and Algebra II - which culminate in Regents Exams for each course.

ALGEBRA I OR ALGEBRA I WITH LAB

Prerequisite: None

1 year, 1 credit

Weight: 1.05

Grades 9-10

Required

This is a one-year course that measures the knowledge and skills needed for students to succeed in their first year of credit-bearing college courses. The course specifically measures the Mathematical Practices specified by NYS. In most cases, these practices require complex mathematical thinking with real-world situations. In Algebra I, the major work of the course includes those standards associated with the “algebra” and “functions” conceptual categories. Successful completion of this course and passing the Regents Exam are requirements for graduation in New York State. The lab course is designed to give students additional support.

GEOMETRY HONORS

Prerequisite: Algebra I

1 year, 1 credit

Weight: 1.10

Grades 9-10

Elective

This one-year course is the second year of a three Regents sequence in math needed for the Advanced Diploma in New York State. It introduces the students to the fundamentals of geometry. This course exceeds the requirements of the New York State core curriculum. It covers additional topics, exploring them more in-depth; this is a much more challenging course than Regents Geometry. The fundamental purpose of the course in geometry is to formalize and extend students’ geometric experiences from the middle grades. Students explore more complex geometric situations and deepen their explanations of geometric relationships, moving toward formal mathematical arguments. Important differences exist between this geometry course and the historical approach taken in geometry classes. For example, transformations are emphasized early in this course. Close attention should be paid to the introductory content for the geometry conceptual category found in the high school NYS Standards. The Mathematical Practice Standards apply throughout each course and, together with the content standards, prescribe that students experience mathematics as a coherent, useful, and logical subject that makes use of their ability to make sense of problem situations.

GEOMETRY R OR GEOMETRY R WITH LAB

Prerequisite: Algebra I

1 year, 1 credit

Weight: 1.05

Grades 10-12

Elective

The fundamental purpose of the course in geometry is to formalize and extend students’ geometric experiences from the middle grades. Students explore more complex geometric situations and deepen their explanations of geometric relationships, moving toward formal mathematical arguments. Important differences exist between this geometry course and the historical approach taken in geometry classes. For example, transformations are emphasized early in this course. Close attention should be paid to the introductory content for the geometry conceptual category found in the high school NYS standards. The Mathematical Practice Standards apply throughout each course and, together with the content standards, prescribe that students experience mathematics as a coherent, useful, and logical subject that makes use of their ability to make sense of problem situations. The lab course is designed to give students additional support.

ALGEBRA II HONORS

Prerequisite: Algebra I and Geometry

1 year, 1 credit

Weight: 1.10

Grades 10-11

Elective

This one-year course continues the three-year sequence for the Advanced Diploma in New York State. This course exceeds the requirements of the NYS curriculum, exploring numerous topics in-depth. In this course, students build on their work with linear, quadratic, and exponential functions, extend their repertoire of functions to include polynomial, rational, and radical functions and continue to expand and hone complex numbers and solving exponential equations using the properties of logarithms. The Mathematical Practice Standards apply throughout each course and, together with the content standards, prescribe that students experience mathematics as a coherent, useful, and logical subject that makes use of their ability to make sense of problem situations. The course is much more challenging than Regents Algebra II. Students take the state Regents exam in Algebra II at the conclusion of the course.

ALGEBRA II OR ALGEBRA II WITH LAB

Prerequisite: Algebra I and Geometry

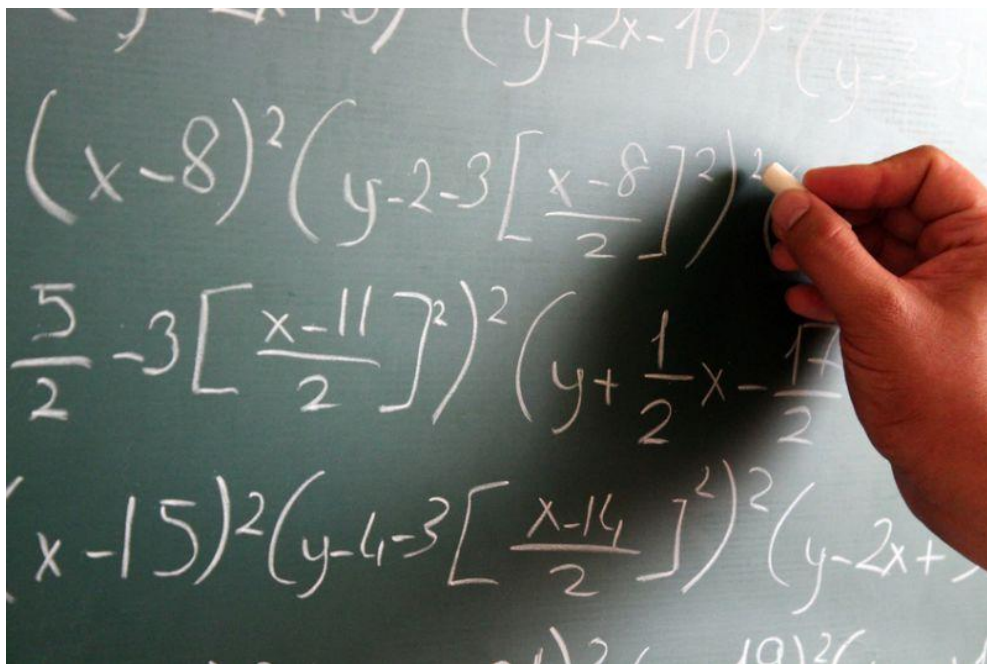
1 year, 1 credit

Weight: 1.05

Grades 10-12

Elective

Both courses are one-year courses that conclude with the state Regents Exam in Algebra II, which is the third of the Regents needed for the Advanced Diploma in New York State. In this course, students build on their work with linear, quadratic, and exponential functions, extend their repertoire of functions to include polynomial, rational, and radical functions, and continue to expand and hone their abilities to model situations and to solve equations, including solving quadratic equations over the set of complex numbers and solving exponential equations using the properties of logarithms. The Mathematical Practice Standards apply throughout each course and, together with the content standards, prescribe that students experience mathematics as a coherent, useful, and logical subject that makes use of their ability to make sense of problem situations. The lab course is designed to give students additional support.



ADVANCED PLACEMENT AND COLLEGE-LEVEL COURSES

PRE-CALCULUS

Prerequisite: Algebra II

1 year, 1 credit

Weight: 1.16

Grades 11-12

Elective

This course gives a unified treatment of functions of algebra and trigonometry. Basic concepts include: algebra, equations and inequalities, functions and graphs, exponential and logarithmic functions and equations, trigonometric functions, and equations, and solving systems of linear equations. Special topics include the binomial theorem linear curve fitting and transformations of graphs. *Upon successful completion of this course, students may earn four college credits from LIU Post University.*

PRE-CALCULUS HONORS

Prerequisite: Algebra II

1 year, 1 credit

Weight: 1.16

Grades 11-12

Elective

This course is a rigorous course that gives a unified treatment of functions of algebra and trigonometry. Basic concepts include: algebra, equations and inequalities, functions and graphs, exponential and logarithmic functions and equations, trigonometric functions, and equations, and solving systems of linear equations. The course will also cover the derivative of algebraic and trigonometric functions with applications to rates, maximization, graphing, and integration and the fundamental theorem. *Upon successful completion of this course, students may earn eight college credits from LIU Post University.*

ADVANCED PLACEMENT CALCULUS AB

Prerequisite: Pre-Calculus or Departmental Approval

1 year, 1 credit

Weight: 1.16

Grade 12

Elective

This is a college-level course in calculus and related analytic geometry. The curriculum includes the “rule of four,” where concepts are investigated numerically, verbally, algebraically, and graphically. Students are required to take the College Board Advanced Placement Calculus Examination at the conclusion of the course. *Students are required to take the College Board Advanced Placement Examination.*

ADVANCED PLACEMENT CALCULUS BC

Prerequisite: Pre-Calculus or Departmental Approval

1 year, 1 credit

Weight: 1.16

Grade 12

Elective

This is a college-level course in calculus and analytic geometry. The content covers two full semesters of college-level work. Students are required to take the Advanced Placement Examination in Calculus BC and are given both AB and BC scores. *Students are required to take the College Board Advanced Placement Examination.*

ADVANCED PLACEMENT STATISTICS

Prerequisite: Departmental Approval

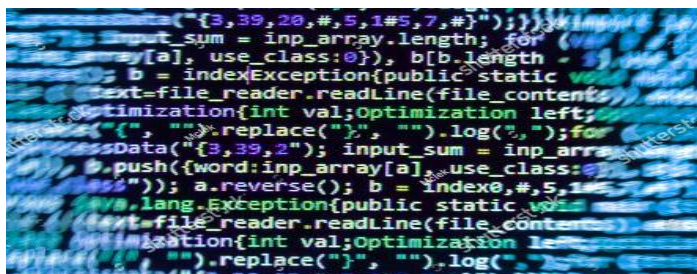
1 year, 1 credit

Weight: 1.16

Grade 12

Elective

This college-level course prepares students for the College Board Advanced Placement Examination in Statistics. Statistics is a wide-reaching branch of mathematics that has importance in fields as varied as medicine, psychology, sociology, education, business, sports, and many more. This class helps students prepare for the statistics they take in college as nearly all majors require some statistics background. It also helps students understand the statistics that they are confronted with every day in newspapers and on television. Students learn how to work with data numerically and graphically and understand the story a set of data is trying to tell. *Students are required to take the College Board Advanced Placement Examination.*



COMPUTER LANGUAGE (CODING) COURSES

ADVANCED PLACEMENT COURSES

ADVANCED PLACEMENT COMPUTER SCIENCE PRINCIPLES

Prerequisite: Algebra

1 year, 1 Credit

Weight: 1.16

Grades 9-12

Elective

The AP Computer Science Principles course is designed to be equivalent to a first- semester introductory college computing course. In this course, students will develop computational thinking skills vital for success across all disciplines, such as using computational tools to analyze and study data and working with large data sets to analyze, visualize, and draw conclusions from trends. The course engages students in the creative aspects of the field by allowing them to develop computational artifacts based on their interests. Students will also develop effective communication and collaboration skills by working individually and collaboratively to solve problems and will discuss and write about the impacts these solutions could have on their community, society, and the world. This course is open to any student that has successfully completed Algebra 1. *Students are required to take the College Board Advanced Placement Examination.*

ADVANCED PLACEMENT COMPUTER SCIENCE A

Prerequisite: Computer Programming 2 or Departmental Approval

1 year, 1 credit

Weight: 1.16

Grades 11-12

Elective

AP Computer Science A is equivalent to a first-semester, college-level course in computer science. The course introduces students to computer science with fundamental topics that include problem solving, design strategies and methodologies, organization of data (data structures), approaches to processing data (algorithms), analysis of potential solutions, and ethical and social implications of computing. The course emphasizes both object-oriented and imperative problem solving and design using Java language. The AP Computer Science A course curriculum is compatible with many CS1 courses in colleges and universities. *Students are required to take the College Board Advanced Placement Examination.*

ADDITIONAL COMPUTER LANGUAGE COURSES

COMPUTER PROGRAMMING 1 (CODING)

Prerequisite: Algebra I (May be taken concurrently)

1 year, 1 credit

Weight: 1.05

Grades 9-12

Elective

Computer Programming 1 is an introductory course to Computer Science. The course will start by learning Python. Python can be used to make automated scripts, data analysis, and to make games. In the course students will also learn to analyze flowcharts and write programs to solve problems using structured algorithmic techniques. This course may explore additional languages such as Scratch and HTML. The languages learned are similar to Java. This course will prepare students to take Computer Programming 2 and eventually take AP Computer Science A.

COMPUTER PROGRAMMING 2 (CODING)

Prerequisite: Computer Programming 1 (Coding)
or Departmental Approval

1 year, 1 credit

Weight: 1.05

Grades 10-12

Elective

In this pre-AP Computer Science course, students explore the concepts of object-oriented programming, software interaction, and the Java language. The focus of the course is on building, using, and modifying objects, the use of primitive data, logical structures, data structures, and inheritance.

ADDITIONAL MATHEMATICS COURSES

COLLEGE ALGEBRA AND TRIGONOMETRY

Prerequisite: Algebra I

1 year, 1 credit
Weight: 1.05

Grades 11-12
Elective

This course is intended for the student who needs an enhanced foundation in Algebra, Trigonometry, and SAT mathematics. The topics will include algebraic and trigonometric functions and their graphs. Also covered are exponential and logarithmic functions and their graphs, systems of equations, and inequalities.

COLLEGE PREPARATORY MATHEMATICS

Prerequisite: Two years of math including Algebra I and a second math course

1 year, 1 credit
Weight: 1.05

Grades 11-12
Elective

This project-based course is designed for students to continue their study of mathematics. This course prepares students for college mathematics placement exams. Topics include: fundamental processes of arithmetic and algebra, factoring, linear and fractional equations, exponents, radicals, quadratic equations, and right triangle trigonometry.

FUNDAMENTALS OF MATH (WTCHS)

Prerequisite: None

1 year, 1 credit
Weight: 1.05

Grades 9-12
Elective

Project based activities, and the use of technology will be implemented to enhance the learning of this course. Topics include: Review of operations with whole numbers and integers, order of operations, operations with polynomials, solving algebraic equations, graphing linear equations and inequalities, and consumer math related topics.

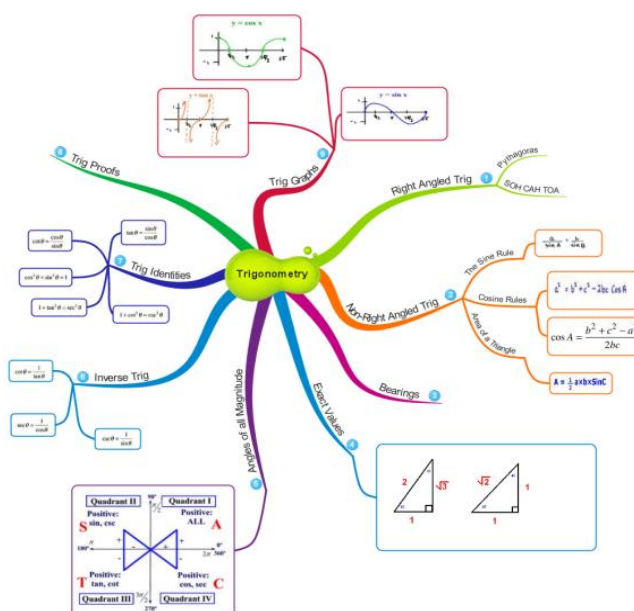
INTRODUCTION TO STATISTICS

Prerequisite: Algebra and Geometry

1 year, 1 credit
Weight: 1.05

Grades 11-12
Elective

This course will uncover the insight and meaning to prepare students for both the workplace and civic life. This course will focus on understanding the world and understanding how statistical inference and data analysis can improve the world around us. Students will learn to think critically with and about data and to communicate their findings to others and carefully evaluate others, arguments. This course will be divided into 4 parts: Exploring and Understanding Data, Exploring Relationships Between Variables, Gathering Data and Randomness and Probability. Students will engage in a variety of features to aid student learning. These include an overarching theme for each unit, integrating technology, active learning – data projects



MUSIC

Performing music students are afforded a wide array of extracurricular opportunities, including various performing field trips, community service events, and participation in outside musical festivals such as All-County and the New York State School Music Association (NYSSMA) Solo and Ensemble Festival. Students enrolled in Performing Music Ensembles participate in a rotating sectional program in which individual performance skills are enhanced.

SELECT CONCERT CHORALE 1 year, 1 credit Grades 9-12 (WTCHS)
Prerequisite: Departmental Approval/Audition Weight: 1.05 Grades 10-12 (EMHS)
Elective

This performing group emphasizes the study of the finest in choral literature. Works performed include a wide range of styles, from classical to jazz. The Choir performs at school concerts, community events, choral festivals, and other appropriate functions.

SELECT CHAMBER ORCHESTRA 1 year, 1 credit Grades 9-12 (WTCHS)
Prerequisite: Departmental Approval/Audition Weight: 1.05 Grades 10-12 (EMHS)
Elective

This performing group emphasizes the study of the finest in orchestral literature. Works performed include a wide range of styles. The Select Chamber Orchestra performs at school concerts, community events, and other appropriate functions.

SELECT WIND ENSEMBLE 1 year, 1 credit Grades 9-12 (WTCHS)
Prerequisite: Departmental Approval/Audition Weight: 1.05 Grades 10-12 (EMHS)
Elective

This performing group emphasizes the study of the finest in band literature. Works performed include a wide range of styles. The Select Wind Ensemble members participate in marching band, regular school concerts, community service events, and other appropriate musical performances. Through an audition process, band members are also eligible for membership in Jazz Ensemble and other performing ensembles. Performances at home football games and scheduled parades are course requirements.

FRESHMAN BAND (EMHS) 1 year, 1 credit Grade 9
Prerequisite: Departmental Approval Weight: 1.05 Elective

The Freshman Band is an ensemble consisting of students in Grade 9 who rehearse and perform music of a moderate level of difficulty. This course is designed to prepare students for continued participation in Symphonic Band.

FRESHMAN ORCHESTRA (EMHS) 1 year, 1 credit Grade 9
Prerequisite: Departmental Approval Weight: 1.05 Elective

The Freshman Orchestra is an ensemble consisting of students in Grade 9 who rehearse and perform music of a moderate level of difficulty. This course is designed to prepare students for continued participation in Symphonic Orchestra.

MIXED CHORUS 1 year, 1 credit Grades 9-12
Prerequisite: Departmental Approval Weight: 1.05 Elective

This performing group is an introduction to four-part choral singing, with an emphasis on the fundamentals of proper vocal technique realized through a wide variety of musical styles.

SYMPHONIC BAND	1 year, 1 credit	Grades 9-12 (WTCHS)
Prerequisite: Departmental Approval	Weight: 1.05	Grades 10-12 (EMHS) Elective

This is a performing organization that emphasizes the finest music literature for wind and percussion ensemble. Members of this group participate in marching band, regular school concerts, community service events, and other appropriate musical performances. Through an audition process, band members are also eligible for membership in Jazz Ensemble and other performing ensembles. Performances at home football games and scheduled parades are course requirements.

SYMPHONIC ORCHESTRA	1 year, 1 credit	Grades 9-12 (WTCHS)
Prerequisite: Departmental Approval	Weight: 1.05	Grades 10-12 (EMHS) Elective

This performing group explores orchestral literature from every time period in musical history from Vivaldi and Mozart to Andrew Lloyd Webber and John Williams. The Symphony Orchestra affords select band members the opportunity to perform with this ensemble. Students from the orchestra are also eligible to perform with various school chamber ensembles at school functions.

MUSIC THEORY & PRODUCTION

FOUNDATIONS OF DIGITAL AUDIO AND MUSIC THEORY (EMHS)	1 year, 1 credit	Grades 9-12
Prerequisite: None	Weight 1.05	Elective

This course is an introduction to the fundamentals of music technology and music theory. Students become familiar with musical notation software as well as cutting-edge sound production applications. Some of the software titles used are iMovie, Logic Pro X, Finale and Final Cut Pro. In addition, the class will compose, record, analyze, and arrange musical pieces. Topics such as audio for video games and film scoring are explored. Students also learn basic song construction and piano skills to aid in writing and recording music. This course aims to develop creative and analytical skills that are fundamental for success for both casual and ambitious music students. The professional software utilized in this course is widely used in the entertainment, communications, and computer industries. Students will use state-of-the-art software to engage deeply in the creative process. This course serves as a prerequisite for Advanced Music Theory 1/2 and Advanced Music Production 1/2.

INTRO TO MUSIC TECHNOLOGY AND THEORY 1 (WTCHS)	1 year, 1 credit	Grades 9-12
Prerequisite: None	Weight: 1.05	Elective

This course is an introduction to the fundamentals of music technology and music theory. Students become familiar with notation software, such as Finale and sound production applications, such as iMovie, iDVD, Garage Band, and Logic. The class composes, records, analyzes, and arranges musical pieces. Students also learn basic song construction and piano skills to aid in writing and recording music. In addition, students have an opportunity to be involved in audio and video recording at school events. This course serves as a prerequisite for Music Theory 2, and Music Production and Recording 1.

MUSIC THEORY 2 (WTCHS)	1 year, 1 credit	Grades 10-12
Prerequisite: Intro to Music Technology and Theory 1 or Departmental Approval	Weight: 1.05	Elective

Students utilize the music computer lab to further develop their Theory 1 skills, including music fundamentals, notation, melodic dictation, music history, harmony, composition, and rhythmic dictation.

MUSIC THEORY 3 (WTCHS)	1 year, 1 credit	Grades 11-12
Prerequisite: Music Theory 2 or Departmental Approval	Weight: 1.05	Elective

Throughout this course, students study music composition, structure, and stylistic components. In addition, this course covers the use and integration of melodic, harmonic, textural, rhythmic, and historical aspects of music. The ultimate goal is to prepare students to recognize, understand and accurately describe the basic components heard or presented in a musical score. Computers, keyboards, and MIDI Technology are used as tools for these compositions, with opportunities for live performances and recordings of original works. Students have the option of taking the Advanced Placement Music Theory Exam.

MUSIC THEORY 4 (WTCHS)	1 year, 1 credit	Grades 11-12
Prerequisite: Music Theory 3 or Departmental Approval	Weight: 1.05	Elective

Students continue to study more advanced music composition, structure and stylistic components through the use and integration of melodic, harmonic, textural, rhythmic, and historical aspects of music. Students enhance skills required to recognize, understand, and accurately describe advanced components heard or presented in a musical score. Computers, keyboards, and MIDI technology are used as tools for compositions with the opportunity for live performances and recordings of original works. Students have the option of taking the Advanced Placement Music Theory Exam.

MUSIC PRODUCTION AND RECORDING 1	1 year, 1 credit	Grades 10-12
Prerequisite: Intro to Music Technology and Theory 1 or Departmental Approval	Weight 1.05	Elective

This course is designed to give students a solid foundation in the art of recording audio and music production. The course is based on the Apple Pro Training curriculum and explores MIDI technology and state-of-the-art recording studio practice. East Meadow High School only: The music lab is an Apple Authorized Training facility. Students are offered the opportunity to take the Apple Certification Exam and earn a Pro Application certificate from Apple.

MUSIC PRODUCTION AND RECORDING 2	1 year, 1 credit	Grades 11-12
Prerequisite: Music Production and Recording 1	Weight 1.05	Elective

This is a sequential course that builds upon prior knowledge and experience from the first course. Programs such as Logic Express, Reason, and Final Cut Express are used as the primary lab applications. Students learn how to record with professional programs such as Pro Tools and Digital Performer, as well as integrate their work with video programs such as Final Cut Pro. Students also participate in school events which require audio and video recording. East Meadow High School only: Students are offered the opportunity to take the Apple Level 2 Certification Exam.

MUSIC PRODUCTION AND RECORDING 3 (WTCHS)	1 year, 1 credit	Grades 11-12
Prerequisite: Music Production and Recording 2	Weight 1.05	Elective

This level-three course further advances the student's knowledge of multimedia production with programs such as Pro Tools, Logic Pro, Final Cut Pro, Soundtrack Pro, and Adobe Creative Suite. Students learn to master the audio console and related audio and video techniques that are used to record in the auditorium. Students also participate in school events which require audio and video recording.

ADVANCED MUSIC THEORY 1/2 (EMHS)	1 year, 1 credit	Grades 10-12
Prerequisite: Foundations of Digital Audio and Music Theory	Weight 1.05	Elective

This advanced high school/college-level course enables students to further develop musical skills learned in Foundations of Digital Music and Music Theory, including music fundamentals, notation, melodic dictation, music history, harmony, and composition. Taught in the state-of-the-art Mac computer labs, students are able to work at their own pace both independently and in groups. Students will have the option to take the AP Music Theory exam upon completion of the coursework. The creative skills and abstract concepts developed in this class are beneficial to music students of all backgrounds and career paths.

ADVANCED MUSIC PRODUCTION AND RECORDING 1/2 (EMHS)	1 year, 1 credit	Grades 10-12
Prerequisite: Foundations of Digital Audio and Music Theory	Weight: 1.05	Elective

This course is designed to help students develop advanced skills in the art of recording audio and music production. The course is based on the Apple Pro Training curriculum and explores MIDI technology and state-of-the-art recording studio practice. The East Meadow High School music lab is an Apple Authorized Training facility. Upon completion of the coursework, students are offered the opportunity to take the Apple Certification Exam and earn a Pro Application certificate from Apple.

MUSIC ELECTIVES

CHAMBER MUSIC EXPERIENCE (EMHS)

Prerequisite: Departmental Approval and Student must be a Member of the Band, Orchestra, or Choral Program

1 year, 1 credit
Weight: 1.05

Grades 9-12
Elective

Students have the opportunity to explore the chamber music repertoire through coaching and performance. Due to the extensive amount of material available and chamber music grouping alternatives, this course may be taken several times throughout the high school period. Students must have departmental approval prior to registering for this course.

JAZZ COMBO & IMPROVISATION (EMHS)

Prerequisite: Departmental Approval and Student must be a Member of the Band, Orchestra, or Choral Program

1 year, 1 credit
Weight: 1.05

Grades 9-12
Elective

Students learn the elements of jazz, including history, style, techniques, improvisation, writing, and performance. The use of computer technology is applied to the aforementioned topics, where appropriate.

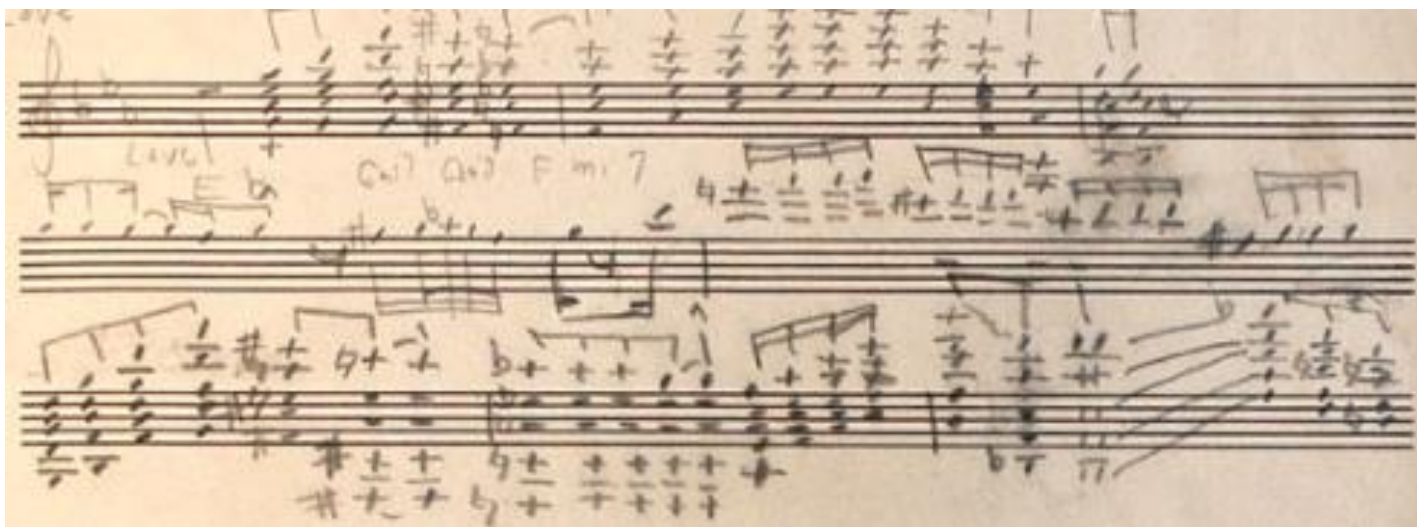
THEATER 1 (WTCHS)

Prerequisite: None

1 year, 1 credit
Weight: 1.05

Grades 9-12
Elective

Theatre I is the foundational course for students to build their skills in the elements of acting and design. The first semester of the course focuses on the teaching of and practicing of ensemble, basics and etiquette, physical and vocal expression, characterization, and acting techniques. At the end of the first semester, students will present and perform their skills in a Monologue/Improvisation Showcase. In the second semester, students explore the history of theatre (rotating between Greek, European/Shakespearean, American, and Non-Western theatre), receive an introduction to Musical Theatre, and students will showcase their work from the semester through a performance of a play (rotating between comedy and dramatic genres). After the performance, students will receive an introduction to the various elements of technical theatre, including lighting, set, costume, prop, make-up, and sound design.



REQUIRED PHYSICAL EDUCATION / HEALTH COURSES

HEALTH EDUCATION

Prerequisite: None

1 semester, ½ credit

Weight: 1.05

Grades 10-12

Required

Health Education is the study of the five components of health. This course is designed to allow the students to demonstrate the capacity to develop their physical, emotional, and intellectual potential through the process of self-assessment, goal setting, and lifelong independent learning. This course is required for graduation.

PHYSICAL EDUCATION

Prerequisite: None

¼ credit each semester

Weight: 1.05

Grades 9-12

Required

Physical Education is a required subject in Grades 9-12, meeting three times during a six-day cycle for a full year. Class participation in every class is required of each student. In order to participate, students must be dressed in appropriate attire for health and safety reasons. The program is designed to develop and improve current levels of physical fitness and to stimulate students to maintain their personal fitness in wholesome forms of physical activity for lifetime benefits.

Physical Education is a sequential educational program based on physical activities undertaken in an active and supportive learning environment. Every student is challenged; however, they are provided with a learning environment that may be modified when necessary to allow for maximum participation. The interdisciplinary nature of Physical Education provides opportunities for all students to achieve the knowledge, skills, and values that develop and enhance the quality of their lives.

For students whose physical ability is restricted, an Adaptive Physical Education class is available. Any student unable to participate in Physical Education due to a temporary medical condition is given written coursework to satisfy their Physical Education requirements.

ADDITIONAL PHYSICAL EDUCATION / HEALTH COURSES

ADVANCED FITNESS TRAINING

Prerequisite: Departmental Approval

1 year, ½ credit

Weight: 1.05

Grades 11-12

Elective

This course will offer students the opportunity to explore a variety of training methods to improve physical fitness and performance. Students will learn how to assess personal fitness levels, set goals, and learn how to develop a personal plan to achieve improvement. Areas explored may include: cardiovascular activities, resistance training, yoga, group fitness training (i.e., kickboxing) and nutrition.

ATHLETIC TRAINING & CPR CERTIFICATION (WTCHS)

Prerequisite: Health

1 semester, ½ credit

Weight: 1.05

Grades 11-12

Elective

This course focuses on athletic training and many other related careers. Students participate in a hands-on approach and are given a behind-the-scenes look at the various professions. After being introduced to the different opportunities available, many of the students have chosen careers along these paths. They learn American Red Cross Standard First Aid and Adult CPR for the professional rescuer. Students will be certified in all Basic Life Support areas, Adult, Infant and Child CPR, all choking skills and the use of the AED. First Aid, a separate certification is also included.

CONTEMPORARY ISSUES IN HEALTH (EMHS)

Prerequisite: Health Education

1 year, ½ credit

Weight: 1.05

Grades 11- 12

Elective

Students in this course explore current societal issues in health, as well as various health-related situations and concerns that they might encounter following high school.

INTRODUCTION TO EXERCISE PHYSIOLOGY (WTCHS)

Prerequisite: Health

1 semester, ½ credit

Weight: 1.05

Grades 11-12

Elective

Exercise physiology is a discipline involving the study of how exercise alters the structure and function of the human body. Topics studied in this course include human energy transfer and expenditure, evaluation of energy-generating capacities, and the effects of exercise on the body, as well as training methods. This course is highly suited for students interested in careers in physical education, personal training, and physical rehabilitation and therapy.

RESEARCH PROGRAM

The research program is an in-depth program that prepares students to propose, conduct, and present research projects for competition. There are a series of elective courses in which students choose a topic and carry out an original research project on that topic. The student does ALL that professional researchers do: journal reading, finding a mentor, planning a project, and carrying it out to an appropriate research conclusion. As the work progresses, the student writes research papers, creates posters, and presents research findings at competitions and symposia as determined by the instructor. The only prerequisite is that the candidate be self-motivated and hardworking.

ADVANCED PLACEMENT SEMINAR

Prerequisite: Departmental Approval

1 year, 1 credit

Weight: 1.16

Grade 10

Elective

This is a foundational course that engages students in cross-curricular conversations that explore the complexities of academic and real-world topics and issues by analyzing divergent perspectives. Using an inquiry framework, students practice reading and analyzing articles, research studies, and foundational, literary, and philosophical texts; listening to and viewing speeches, broadcasts, and personal accounts; and experiencing artistic works and performances. Students learn to synthesize information from multiple sources, develop their own perspectives in written essays, and design and deliver oral and visual presentations, both individually and as part of a team. Ultimately, the course aims to equip students with the power to analyze and evaluate information with accuracy and precision in order to craft and communicate evidence-based arguments. *Students are required to take the College Board Advanced Placement Examination*

ADVANCED PLACEMENT RESEARCH

Prerequisite: Advanced Placement Seminar and Departmental Approval

1 year, 1 credit

Weight: 1.16

Grade 11

Elective

AP Research, the second course in the AP Capstone experience, allows students to deeply explore an academic topic, problem, issue, or idea of individual interest. Students design, plan and implement a year-long investigation to address a research question. Through this inquiry, they further the skills they acquired in the AP Seminar course by learning research methodology, employing ethical research practices, and accessing, analyzing, and synthesizing information. Students reflect on their skill development, document their processes, and curate the artifacts of their scholarly work through a process and reflection portfolio. The course culminates in an academic paper of 4,000-5,000 words (accompanied by a performance, exhibit, or product where applicable) and a presentation with an oral defense. *Students are required to present the College Board Advanced Placement Portfolio.*

RESEARCH 1

Prerequisite: None

1 year, 1 credit

Weight 1.10

Grade 9

Elective

Students entering Grade 9 are able to explore a particular interest as this is a student-centered course. This program guides them through the process of reading scientific journal articles, developing hypotheses, collecting, and analyzing data, and eventually presenting their research findings. Students present their findings to their class, to the school district, and also in science competitions.

RESEARCH 2

Prerequisite: Research 1 or Departmental Approval

1 year, 1 credit

Weight: 1.10

Grade 10

Elective

This course enables students to practice original scientific research in an independent manner. Motivation, enthusiasm, and dedication are essential for success in pursuing an in-depth research project. This course allows students the opportunity to participate in the community of science research and scholarship as part of their high school experience. Students are encouraged to work in conjunction with research scientists and professionals within their field of research, such as the life sciences, physical sciences, psychology, and the social sciences. All students are expected to enter their research projects in local, regional, national, and/or international scientific competitions. Students use the same professional methods employed by scientists, developing poster and oral presentations accompanied by slides or PowerPoint graphics. This program is an elective course taken in addition to the traditional sciences (Earth Science, Living Environment, Chemistry, and Physics). All students present their research projects at their high school science symposium prior to the end of the school year (April/ May).

RESEARCH 3

Prerequisite: Research 2

1 year, 1 credit

Weight: 1.16

Grades 11-12

Elective

This course enables students to continue working on their original scientific research from Research 2. At this point, they may be working with a research scientist in their field of study. All students are expected to enter their research projects in local, regional, national, and/or international scientific competitions. Students use the same professional methods employed by scientists, developing poster and oral presentations accompanied by slides or PowerPoint graphics. This program is an elective course taken in addition to the traditional sciences (Earth Science, Living Environment, Chemistry, and Physics). All students present their research projects at their high school symposium prior to the end of the school year (April/May).

Students are expected to enter national competitions, such as Siemens and ISEF Competitions. By the end of Research 3, students must have a lab placement with a department-approved mentor. Students not placed in a lab by the end of Research 3 must receive departmental approval in order to continue in the program. *Students in this course may also be eligible for AP Research credit.*

RESEARCH 4

Prerequisite: Research 3 and Department-Approved Mentor

1 year, 1 credit

Weight: 1.16

Grades 11-12

Elective

Students complete original research in a lab with a qualified mentor or in school with departmental approval. They enter in competitions, such as Siemens, INTEL-Science Talent Search, Long Island Science and Engineering Fair, Junior Science and Humanities Symposium, and many more. *Students in this course may also be eligible for AP Research credit.*

STATISTICS IN RESEARCH (WTCHS)

Prerequisite: Must be enrolled in Science Research 2 or 3

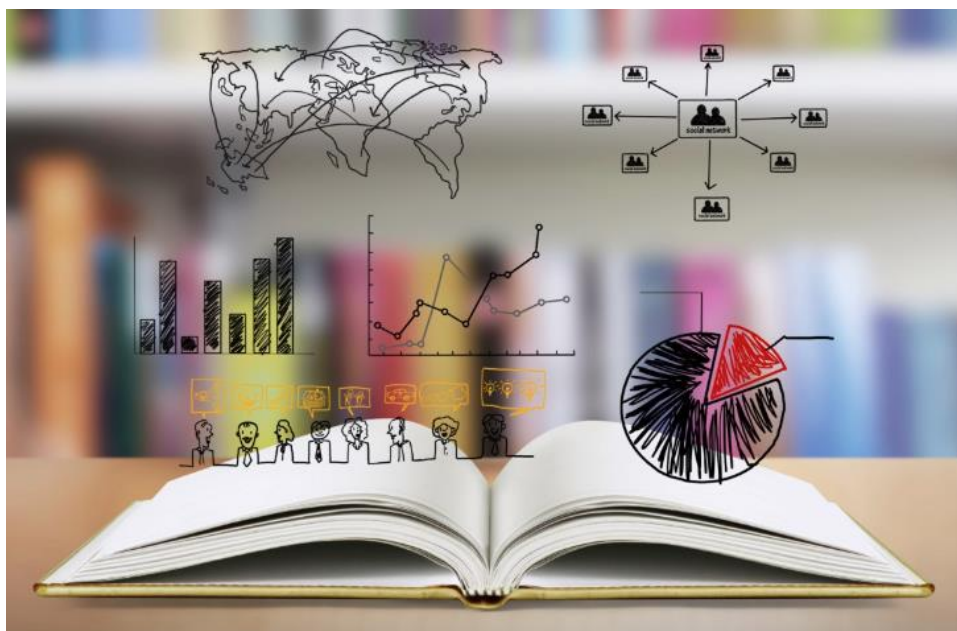
1 year, ½ credit

Weight: 1.10

Grades 10-12

Elective

The purpose of this course is to introduce students to major concepts and tools for collecting, analyzing, and drawing conclusions from data. This course acts as an enhancement to the research course program and meets on the opposite day. *Students in this course may also be eligible for AP Research credit.*





SCIENCE



BIOLOGY COURSES REGENTS BIOLOGY COURSES

LIVING ENVIRONMENT: HONORS

Prerequisite: Departmental Approval

Labs: Included in 7.5-period-per-week course

1 year, 1 credit

Weight: 1.10

Grades 9-10

Required

This course is based on all areas of the New York State Living Environment Core Curriculum. In addition, students consider topics included in the College Board Achievement Examination in Biology. Students are required to take the New York State Regents Exam and are encouraged to take the College Board SAT Subject Test Exam in Biology.

LIVING ENVIRONMENT

Prerequisite: None

Labs: Included in 7.5-period-per-week course

1 year, 1 credit

Weight: 1.05

Grades 9-12

Required

This course is based on the New York State Living Environment Core Curriculum. Teachers provide instruction in all required areas and select optional areas of the program. Students are required to take the New York State Regents Exam.

ADVANCED PLACEMENT COURSE

ADVANCED PLACEMENT BIOLOGY

Prerequisite: 3 years of Mathematics and 1 year of Living Environment and Chemistry or Departmental Approval

Labs: Included in 7.5-period-per-week course

1 year, 1 credit

Weight: 1.16

Grades 11-12

Elective

This course is designed to be the equivalent of a college introductory biology course. The goal of this course is to provide students with the conceptual framework, factual knowledge, and analytical skills necessary to understand the rapidly changing field of biology. The course examines the molecular and cellular levels of life by examining cellular structure, metabolism, molecular genetics, division, and control mechanisms. Students also examine life on the level of the organism and the ecosystem. Plant and animal systems are examined as their role in evolution and interactions with their environment are explored. *Students are required to take the College Board Advanced Placement Examination.*



CHEMISTRY COURSES

REGENTS CHEMISTRY COURSES

PHYSICAL SETTING: CHEMISTRY

Prerequisite: Successful completion of Algebra & Geometry

Labs: Included in 7.5-period-per-week course

1 year, 1 credit

Weight: 1.05

Grades 10-12

Elective

This course is based on the New York State Chemistry Core Curriculum. Teachers provide instruction in all required areas and select optional areas of the program. Students are required to take the New York State Regents Exam.

ADVANCED PLACEMENT COURSE

ADVANCED PLACEMENT CHEMISTRY

Prerequisite: 2 years of Mathematics & Co-Requisite with Algebra II

Labs: Included in 7.5-period-per-week course

Elective and 1 year of Chemistry or Department Approval Labs: Included in 10-period-per week course

1 year, 1 credit

Weight: 1.16

Grades 10-12

Elective

The AP Chemistry course is designed to be the equivalent of the general chemistry course usually taken during the first college year. Students in such a course attain a depth of understanding of fundamentals and reasonable competence in dealing with chemical problems. The course contributes to the development of the students' abilities to think clearly and to express their ideas, orally and in writing, with clarity and logic. Topics, such as the structure of matter, kinetic theory of gases, chemical equilibrium, chemical kinetics, and the basic concepts of thermodynamics, are presented in considerable depth. *Students are required to take the College Board Advanced Placement Examination in addition to the New York State Regents Exam.*

EARTH SCIENCE COURSES

REGENTS EARTH SCIENCE COURSES

PHYSICAL SETTING: EARTH SCIENCE

Prerequisite: None

Labs: Included in 7.5-period-per-week course

1 year, 1 credit

Weight: 1.05

Grades 9-12

Required

This course is based on the New York State Earth Science Core Curriculum. Students are required to take the New York State Regents Exam.

ADVANCED PLACEMENT AND COLLEGE-LEVEL COURSES

ADVANCED PLACEMENT ENVIRONMENTAL SCIENCE

Co-requisite: 3 years of Regents Science, including Earth Science and 2 years of Regents Math or Departmental Approval

Labs: Included in a 7.5-period-per-week course

1 year, 1 credit

Weight: 1.16

Grade 10-12

Elective

This course provides students with the scientific principles, concepts, and methodologies required to understand the interrelationships of the natural world. Students identify and analyze environmental problems, both natural and man-made, and examine alternative solutions for resolving and/or preventing them. *Students are required to take the College Board Advanced Placement Examination.*

COLLEGE LEVEL EARTH SCIENCE (EMHS)

Prerequisite: Course average of 85 or higher in Earth Science

Labs: None

1 year, 1 credit

Weight: 1.16

Grade 10 - 12

Elective

Earth Science examines the interrelations of the lithosphere (solid Earth), hydrosphere (water, including oceans), biosphere (life), and atmosphere (air), recognizing the influence of human beings as agents of change. Students enrolled in this course will obtain a scientific understanding of Earth systems through courses in geology, geography, biology, and chemistry as well as an understanding of humans' relationship to the Earth through courses in the social sciences, including engaging in meaningful dialogue. *Upon successful completion of this course, students may earn six college credits from LIU Post University.*

PHYSICS COURSES

REGENTS PHYSICS COURSE

PHYSICAL SETTING: PHYSICS

Prerequisite: Successful completion of Algebra and Geometry or Departmental Approval

Labs: Included in 7.5-period-per-week course

1 year, 1 credit
Weight: 1.05

Grades 11-12
Elective

This course is based on the New York State Physics Core Curriculum. Students are required to take the New York State Regents Exam.

ADVANCED PLACEMENT COURSES

ADVANCED PLACEMENT PHYSICS 1

Prerequisite: 3 years of Mathematics and 2 years of Regents Science or Departmental Approval

Labs: Included within a 10-period-per-week course

1 year, 1 credit
Weight: 1.16

Grades 11-12
Elective

AP Physics 1 is an algebra-based, introductory college-level Physics course that explores topics such as Newtonian mechanics (including rotational motion); work, energy, and power; mechanical waves and sound; and introductory, simple circuits. Through inquiry-based learning, students develop scientific, critical thinking, and reasoning skills. Eleventh-grade students who complete this course may elect to take AP Physics C (EMHS) in their senior year. ***Students are required to take the College Board Advanced Placement Examination in addition to the New York State Regents Exam.***

ADVANCED PLACEMENT PHYSICS 2 (WTCHS)

Prerequisite: Regents Physics or AP Physics 1

Labs: Included in a 7.5 period-per-week course

1 year, 1 credit
Weight 1.16

Grades 11-12
Elective

Advanced Placement Physics 2 is an algebra-based, introductory college-level physics course that explores topics such as fluid statics and dynamics, thermodynamics with kinetic theory, PV diagrams and probability, electrostatics, electrical circuits with capacitors, magnetic fields, electromagnetisms, physical and geometric optics, and quantum, atomic, and nuclear physics. Through inquiry-based learning and laboratory experiments, students develop scientific critical thinking and reasoning skills. Students should have completed AP Physics 1 or a comparable introductory physics course and should have taken or be concurrently taking pre-calculus or an equivalent course. ***Students are required to take the College Board Advanced Placement Examination.***

ADVANCED PLACEMENT PHYSICS C (EMHS)

Prerequisite: Regents Physics or AP Physics 1

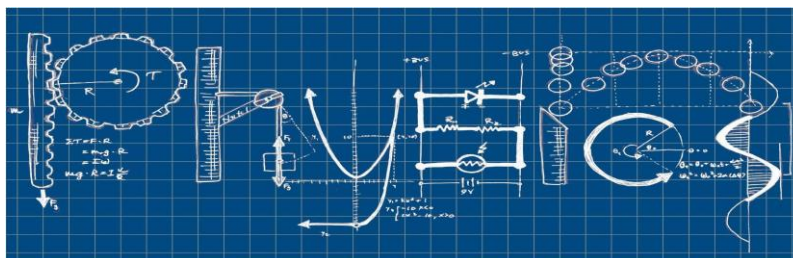
Co-requisite: AP Calculus

Labs: Included in a 7.5-period-per-week course

1 year, 1 credit
Weight: 1.16

Grades 11-12
Elective

AP Physics C is a calculus-based introductory college-level course for students who intend to major in the physical sciences, especially engineering. Methods of calculus are used in formulating physical principles and in applying them to real-world problems. The main areas of focus are mechanics, electricity, and magnetism. Integrating calculus, students are posed with a variety of challenging problems to solve while developing a deep understanding of physics concepts. ***Students are required to take the College Board Advanced Placement Examination.***



SCIENCE ELECTIVES

COLLEGE-LEVEL COURSES

FORENSIC TECHNOLOGY AND CRIMINAL LAW (WTCHS)

Prerequisite: Successful completion of 2 Regents level Science courses

Co-Requisite: Applied, Regents or AP Chemistry

1 year, 1 credit

Weight 1.16

Grades 11-12

Elective

This course analyzes forensic technological techniques used in the identification and apprehension of criminals, consisting of an in-depth evaluation of physical evidence, including identification of fingerprints, hair and fiber samples, DNA evidence, and serology. Additionally, it examines the application of criminal law in the American judicial system. Preservation and protection of life and property through the law are discussed. *Upon successful completion of this course, students may earn up to six college credits from LIU Post.*

MARINE BIOLOGY (EMHS)

Prerequisite: Course average of 85 or higher in Living Environment

1 year, 1 credit

Weight: 1.16

Grades 11-12

Elective

This course introduces life in marine waters. Topics include physical and biological properties of marine waters, identification, and characteristics of major groups of marine plants and animals, adaptive modifications to marine environments, and the special nature and diversity of marine ecosystems. *Upon successful completion of this course, students may earn up to three college credits from LIU Post.*

SYRACUSE FORENSIC SCIENCE (EMHS)

Prerequisite: Completion of Chemistry Regents course and 2 other Regents-level Science courses

1 year, 1 credit

Weight: 1.16

Grades 11-12

Elective

This course is intended to provide an introduction to understanding the science behind crime scene detection. Scientific methods specifically relevant to crime detection and analysis are presented with emphasis based upon the techniques used in evaluating physical evidence. *Students enrolled in this course may earn college credits through Syracuse University.*

SCIENCE ELECTIVE COURSES

APPLIED CHEMISTRY

Prerequisite: Completion of 2 Regents-level Science courses

1 year, 1 credit

Weight: 1.05

Grades 11-12

Elective

This course provides students with instruction that is directly related to daily living. Topics include: scientific measurement, composition and properties of matter, structure of atoms and molecules, acids, bases, salts, gases in the atmosphere, the chemistry of water, household chemicals, and the chemistry of food. This class meets for one period every day. Any lab activity is completed during that one period.

ASTRONOMY

Prerequisite: Completion of 2 Regents-level Science courses

1 semester, ½ credit

Weight: 1.05

Grades 11-12

Elective

This course serves as an introduction to astronomy and includes the motions of the stars and planets across the night sky and the motion of our sun, as well as other objects associated with the heavens. Additional topics include stars and their life cycles, as well as theories relating to the formation of the universe.

CRIMINOLOGY AND FORENSIC SCIENCE (EMHS)

Prerequisite: Completion of 2 Regents-level Science courses

1 year, 1 credit

Weight: 1.05

Grades 11-12

Elective

This is an interdisciplinary course that provides students with the legal and scientific aspects of civil and criminal law. Team-teaching instruction allows students to study the technical and social aspects of the law. As a result, the course combines science and social studies, and instructs students about rights and protections under the criminal justice system. Composition of the one credit is .5 Science and .5 Social Studies.

GENETICS (WTCHS)	1 semester, ½ credit	Grades 11-12
Prerequisite: Living Environment plus one other Regents-level Science course	Weight: 1.05	Elective
Labs: Included in the daily lesson		

This course investigates the mechanisms of human inheritance. Students examine the basic concepts of DNA, along with normal and abnormal gene function. The past discoveries of Gregor Mendel, James Watson, and Francis Crick are studied. Students investigate current topics in genetics such as stem cell research, gene therapy, and cancer research.

GREENHOUSE STUDIES (EMHS)	1 semester, ½ credit	Grades 11-12
Prerequisite: Living Environment plus one other Regents-level Science course	Weight: 1.05	Elective

This course is designed to introduce students to the field of horticulture, which is the study of growing garden plants. This course is not your typical classroom experience! Students use practical experience related to the culture of plants, during which they use the school greenhouse daily to put classroom lectures into hands-on practice. In addition, this course emphasizes knowledge and understanding of the importance of establishing, maintaining, and managing a horticulture business (florist, nursery, landscaping, etc.).

HUMAN PHYSIOLOGY	1 semester, ½ credit	Grades 11-12
Prerequisite: Living Environment plus one other Regents-level Science course	Weight: 1.05	Elective
Labs: Included in the daily lesson		

Human Physiology is a course of study for students who are interested in understanding human anatomy and functions. It is recommended for all students who have taken Living Environment.

METEOROLOGY	1 semester, ½ credit	Grades 11-12
Prerequisite: Earth Science plus one other Regents-level Science course	Weight: 1.05	Elective

This course provides an in-depth study of the weather, including atmospheric properties and the processes that control temperature, wind, precipitation, and storm systems. Topics include weather forecasting, climate change, and air pollution.

NATURAL DISASTERS	1 semester, ½ credit	Grades 11-12
Prerequisite: Completion of 2 Regents-level Science courses	Weight: 1.05	Elective

This course studies various forces of nature, such as hurricanes, tornadoes, earthquakes, volcanoes, tsunamis, floods, blizzards, droughts, avalanches, types of precipitation, and coastal erosion. The impact of these forces is discussed as related to change in the Earth's physical conditions.

NUTRITION AND WELLNESS	1 semester, ½ credit	Grades 11-12
Prerequisite: Living Environment plus one other Regents-level Science course	Weight: 1.05	Elective

This course investigates how good nutrition interacts with our bodies and contributes to our overall wellness. The following topics are explored: physiology of the digestive system, diagnosing nutritional deficiencies, the nutritional analysis of food, and hunger awareness.

OCEANOGRAPHY / MARINE BIOLOGY (EMHS)	1 year, 1 credit	Grades 11-12
Prerequisite: Living Environment	Weight: 1.05	Elective

Oceanography considers the biological, chemical, physical, and geological aspects of the oceans. Lab investigations, field trips, the operation of saltwater tanks, and the opportunity to work and learn on a research vessel are included. The course teaches about the various forces that form the oceans and influence their present condition. Students learn about coral reefs, ocean topography, waves, tsunamis, tides, currents, and barrier beaches. Students gain special consideration of Long Island and how it interacts with the Atlantic Ocean.

SOCIAL STUDIES



REQUIRED SOCIAL STUDIES COURSES

GLOBAL HISTORY AND GEOGRAPHY I

Prerequisite: None

1 year, 1 credit

Weight: Dependent upon Level

Grades 9-12

Required

Global History and Geography is a two-year course. From the days of nomadic roaming tribes in 10,000 B.C.E. to the meeting of hemispheres throughout the 15th, 16th, and 17th centuries, Global I explores the continuous relationship of geography and humankind as well as the impacts of civilizations gaining, consolidating, and losing power in an increasingly interconnected world. These topics are studied through chronological context as well as continuing themes.

GLOBAL HISTORY AND GEOGRAPHY II

Prerequisite: Global History and Geography I

1 year, 1 credit

Weight: Dependent upon Level

Grades 10-12

Required

Global History and Geography is a two-year course. Global History and Geography II builds from the significant concepts and themes in Global History I. Using a chronological and thematic approach, Global II explores the impacts of power consolidation and power loss in an increasingly interconnected and technologically advanced world over 275 years from the mid-18th Century to the present. This course concludes with the Regents Exam in Global History and Geography.

UNITED STATES HISTORY AND GOVERNMENT

Prerequisite: Global History and Geography II

1 year, 1 credit

Weight: Dependent upon Level

Grades 11-12

Required

This one-year course is designed to provide students with a culminating survey of major forces of United States history. Major components of this course include constitutional issues, industrial and technological development within the United States, and our country's increasing involvement in international and global concerns. This course concludes with the Regents Exam in United States History and Government.

ECONOMICS

Prerequisite: U.S. History and Government

1 semester, ½ credit

Weight: 1.05

Grade 12

Required

This course is designed to help students understand the economic challenge of an ever-changing world. Basic units in the course include: Introduction to Personal Finance, Introduction to Economics and Economic Systems, Elements of the Economy, Bringing Economic Systems Together, and the United States and the World Economy.

PARTICIPATION IN GOVERNMENT

Prerequisite: U.S. History and Government

1 semester, ½ credit

Weight: 1.05

Grade 12

Required

This course emphasizes the interaction between citizens and government at the local, state, and federal levels. The development of student participation in the processes of government is included in this course.

CONTEMPORARY BUSINESS AND ECONOMICS / GOVERNMENT	1 year, 1 credit Weight: 1.16	Grade 12 Elective
Prerequisite: None		
Note: This course can be taken in lieu of the required participation in Government and Economics courses.		

This course examines the role of business in American society, the interrelated activities through which business provides the goods and services essential to contemporary society, and the interrelationship of business and government, labor, and society at large. General areas of study include foundations of business, management of the enterprise, marketing, finance, financial services, contemporary problems, and developments. *Upon successful completion of this course, students may earn up to six college credits from LIU Post.*

THE CIVIL WAR: AMERICA’S TURNING POINT (EMHS)	1 year, 1 credit Weight: 1.16	Grades 11-12 Elective
Prerequisite: Global History and Geography I and II		

This course examines the causes of the Civil War, as well as its impact on American history. The focus of this course includes such topics as Civil War battles, military strategies, and the social, political, and cultural changes that resulted from the war. *Upon successful completion of this course, students may earn up to three college credits from LIU Post.*

U.S. HISTORY	1 year, 1 credit Weight: 1.16	Grade 11 Elective
Prerequisite: Global History and Geography II		
Departmental Approval Note: This course can be taken in lieu of the required U.S. History and Government course.		

The focus of this course is the major developments in American history from the Colonial period to the present. This course culminates with the Regents Examination in United States History and Government. *Upon successful completion of this course, students may earn up to six college credits from LIU Post.*

LAW PROGRAM COURSES

COLLEGE BUSINESS LAW	1 year, 1 credit Weight: 1.16	Grades 11-12 Elective
Prerequisite: None		

Students examine criminal and civil issues with an emphasis on business law. This course explores how law affects everyday life. Topics covered include origins of our courts and laws, how ethics affect our law, torts, contracts, consumers, property, marriage, international, agency, and employment law. Students learn how business law affects individuals and business organizations. *Upon successful completion of this course, students may earn up to three college credits from LIU Post.*

INTRODUCTION TO LAW (WTCHS)	1 year, 1 credit Weight: 1.05	Grades 9-10 Elective
Prerequisite: None		

This course includes the following major components: writing for the Law, which includes information gathering, research, legal briefs, petitions, and critical writing; speaking for the Law, which includes presentations, critical discussions, introduction to oral arguments and extemporaneous speaking; Legal Multimedia presentations, which focuses on the integration of multimedia and relevant technology to develop presentations related to contemporary issues; and The Legal Speakers Bureau, which incorporates various professionals into the classroom experience. Guest speakers include attorneys, police officers, legal secretaries, judges, probation officers, corrections officers, social workers, legal consultants, forensic scientists, and others in an effort to introduce careers related to law.

INTRODUCTION TO LAW AND TECHNOLOGY (EMHS)

Prerequisite: None

1 year, 1 credit

Weight: 1.05

Grades 9-10

Elective

Every student should know their legal rights and be on the cutting edge of technology. This course explores our legal framework through an interdisciplinary teaching approach involving the Social Studies and Business Departments. The course is designed to improve upon student's research, writing, and presentation skills. The multimedia applications focus on the integration of relevant technology to develop presentations related to legal and contemporary issues. General areas of study: The Bill of Rights, School Law, Criminal Law, and Civil Law. Students learn how to use a variety of multimedia technologies to further enhance their understanding of the legal system.

FORENSIC TECHNOLOGY AND CRIMINAL LAW (WTCHS)

Prerequisite: Successful completion of 2 Regents level Science courses

Co-Requisite: Applied, Regents or AP Chemistry

1 year, 1 credit

Weight: 1.16

Grades 11-12

Elective

This course analyzes forensic technological techniques used in the identification and apprehension of criminals, consisting of an in-depth evaluation of physical evidence, including identification of fingerprints, hair and fiber samples, DNA evidence, and serology. Additionally, it examines the application of criminal law in the American judicial system. Preservation and protection of life and property through the law are discussed. *Upon successful completion of this course, students may earn up to six college credits from LIU Post.*

FOUNDATIONS OF LAW (WTCHS)

Prerequisite: Introduction to Law

1 year, 1 credit

Weight: 1.05

Grades 10

Elective

This course is designed to allow students to investigate the foundations of our legal system. Throughout the year, students research and perform trial simulations that set precedents for our legal and court procedures. It also provides a technical introduction and training for trial preparation. Opening arguments, direct and cross examinations, and closing arguments are explored. Students are engaged in various multimedia presentations and oral presentations designed to assess their comprehension of the course content.

TRIAL LAW (EMHS)

Prerequisite: None

1 year, 1 credit

Weight: 1.05

Grades 10-12

Elective

This course is designed for students to investigate the foundations of our trial system. Throughout the year, students research our court system and perform mock trials for hands-on experience. The mock trial preparation provides a technical introduction to the major components of a trial: opening statements, direct and cross examinations, and closing arguments. Oral presentations are designed to assess a student's comprehension of course content through the use of various multimedia tools.



ADDITIONAL SOCIAL STUDIES COURSES

CRIMINOLOGY AND FORENSIC SCIENCE (EMHS) 1 year, 1 credit Grades 11-12
Prerequisite: Completion of 2 Regents-level Science courses Weight: 1.05 Elective

This is an interdisciplinary course that provides students with the legal, scientific, technical, and social aspects of civil and criminal law. As a result, students become informed about the investigation process as well as rights and protection under the criminal justice system. Composition of the one credit is .5 Science and .5 Social Studies.

FOUNDATIONS OF EDUCATION (EMHS) 1 year, 1 credit Grade 12
Prerequisite: None Weight: 1.05 Elective

This course is designed for high school students interested in a career in education. Students explore the historical aspects of teaching, interact with experts in the field, and research and apply current trends, while experiencing hands-on opportunities at various levels. This course enables students to formulate a sociological and philosophical perspective relative to education.

HOLOCAUST STUDIES 1 semester, ½ credit Grades 11-12
Prerequisite: None Weight: 1.05 Elective

This course examines the roots and developments that led to one of the most infamous periods of human history, the Holocaust. The goal of this course is to provide students with an understanding of these tragic events and nurture a respect for all human life. This course includes media related to the Holocaust and a field trip to the Nassau County Holocaust Memorial and Educational Center in Glen Cove.

NEW YORK, NEW YORK (EMHS) 1 semester, ½ credit Grades 11-12
Prerequisite: Global History and Geography II Weight: 1.05 Elective

This course is designed to explore the rich history and culture of New York City. Particular attention is given to such topics as early New York, immigration, city culture, geography, social and political reform, and the 100th anniversary of the consolidation of the five boroughs into one city. The city is used as a resource. Field trips are used to enhance in-class studies

INTRODUCTION TO PSYCHOLOGY I 1 semester, ½ credit Grades 10-12 (EMHS)
Prerequisite: None 1 semester, ½ credit Grades 9-12 (WTCHS)
Weight: 1.05 Elective

This elective course is an introduction to the principles of psychology and provides insights into personal and interpersonal development. The course uses hands-on experiments and multimedia to explore psychological concepts such as learning and memory, senses, human development, and approaches to analyzing human behavior.

PSYCHOLOGY IN OUR LIVES 1 semester, ½ credit Grades 10-12
Prerequisite: Introduction to Psychology I/Departmental Approval Weight: 1.05 Elective

Psychology in Our Lives further explores psychological principles, with an emphasis on topics that directly influence human interaction. Through the use of case studies, experiments, and interactive lessons, students explore topics such as altered states of consciousness, dreams, social psychology, and various psychological disorders.

REEL SOCIAL STUDIES: THE STUDY OF HISTORY THROUGH FILM (WTCHS) 1 semester, ½ credit Grades 10-12
Prerequisite: None Weight: 1.05 Elective

This course examines World and United States History through the study of film and movies. Additionally, students examine a variety of sources related to the eras, including works of art, literature, and photographs. Students examine the films as historical evidence in assessing the accuracy of the film and reasons for making the film.

SOCIETY AND SPORTS

Prerequisite: None

1 semester, ½ credit

Weight: 1.05

Grades 10-12

Elective

Students examine the history of sports as a social and cultural phenomenon, exploring topics such as: the influence of sports on the Civil Rights movement, the Olympics, sports as an agent of foreign policy during and after the Cold War, sports, and equal rights for women. Additionally, students develop an awareness of how sports and sport participation impact, the lives of individuals and groups in society, thinking about these issues in an informed and critical way.

SOCIOLOGY

Prerequisite: None

1 semester, ½ credit

Weight: 1.05

Grades 10-12

Elective

This elective focuses on the study of the structure and the functioning of human groups, including the social relationships which people develop in their interactions with one another. The course considers such topics as the origins of culture, cultural diversity, and most importantly, the cultural heritage of the individual student in terms of his or her own personality and relationship to the group. It is anticipated that the students, through application of fundamental concepts discussed in the course, approach the problems of their own society with greater objectivity.

MODERN CONFLICTS, THEN & NOW (EMHS)

Prerequisite: None

1 semester, ½ credit

Weight: 1.05

Grades 11-12

Elective

This course focuses on the events and implications of World War I, World War II, and the Cold War. This course covers the various battles, actions and policies associated with these 20th century events. A variety of media components (films, newspapers, and projects) are incorporated. Some declassified facts about this era are also included in the course.





WORLD LANGUAGES



The primary goal of the language curriculum is to foster functional communication in a language other than English. The understanding and appreciation of another culture is an integral part of language study and the basic context for all the courses. The courses outlined here emphasize the four language skills – listening, speaking, reading, and writing – to achieve functional communication. In American Sign Language (ASL), the emphasis is on receptive and expressive skills. The World Languages program at the high school level is sequential and articulated with the middle school program, which determines Grade 9 placement in the high school.

ADVANCED PLACEMENT AND COLLEGE-LEVEL COURSES

ADVANCED PLACEMENT SPANISH (LEVEL 4)

Prerequisite: Spanish 3R/3H

1 year, 1 credit

Weight: 1.16

Grades 11-12

Elective

This course is a college-level elective that is a precursor for students who are interested in following an Advanced Placement sequence. This course is structured for serious upper-level students and is conducted entirely in the target language. Coursework is intended to prepare students for either the College Level 5 Language Course or for the Advanced Placement Course and Examination in Language, which can be taken the following year.

ADVANCED PLACEMENT SPANISH (LEVEL 5)

Prerequisite: Spanish 4 College Level or
Advanced Placement in Spanish 4

1 year, 1 credit

Weight: 1.16

Grade 12

Elective

This culminating course is a college-level elective that prepares students for the rigors of the Advanced Placement Language Examination. Students refine and expand linguistic skills, build cultural awareness, and focus on formal structures of the language and vocabulary through the four proficiencies of listening, speaking, reading, and writing. **Successful completion of five units of World Language credits through a departmental examination (Level 5), Checkpoint C. Students are required to take the College Board Advanced Placement Examination.**

ASL, FRENCH, ITALIAN, AND SPANISH 4H COLLEGE LEVEL

Prerequisite: ASL, French, Italian, or Spanish 3R/3H

1 year, 1 credit

Weight: 1.16

Grades 11-12

Elective

This college level involves the refinement of the linguistic structures of the foreign language with a deeper knowledge of advanced grammar and syntax. Students are introduced to foreign literature with readings of short stories, newspaper and magazine articles and selections from all genres of literature. The ASL course is an advanced-level course that examines ASL through its cultural contributions. Various aspects of ASL art, poetry, storytelling techniques and conversational strategies are explored. *ASL students may earn up to six college credits from Stony Brook University. French, Italian, and Spanish students may earn up to six college credits from Adelphi University.*

ASL, FRENCH, ITALIAN, OR SPANISH 5H COLLEGE LEVEL	1 year, 1 credit	Grade 12
Prerequisite: ASL, French, Italian, or Spanish 4 College Level	Weight: 1.16	Elective

This college course extends the study of the foreign language. Students experience more advanced forms of literature and culture and are required to demonstrate oral and written competence in the foreign language. The ASL course is an advanced-level course that examines ASL through its cultural contributions. Various aspects of ASL art, poetry, storytelling techniques and conversational strategies are explored. **Successful completion of five units of World Language credits through a departmental examination (Level 5), Checkpoint C. ASL students may earn up to six college credits from Stony Brook University. French, Italian, and Spanish students may earn up to six college credits from St. John’s University: minimum 80 average and 1,000 SAT score, not including the writing portion.**

SPANISH 4	1 year, 1 credit	Grades 11
Prerequisite: Spanish 3R/3H	Weight: 1.05	Elective

This level studies the reading, writing, listening comprehension and simple conversational patterns. Through varied activities, students will increase their comprehension in reading, writing, and listening. Simple conversational patterns are studied and practiced. Students are introduced to Hispanic literature including newspaper and pop culture magazines, as well as selections from all genres of Hispanic literature. *Students who are enrolled in this course and continue through level 5 may earn up to six college credits from Adelphi University.*

SPANISH 5	1 year, 1 credit	Grades 12
Prerequisite: Spanish 4	Weight: 1.16	Elective

This course is a continuation of Spanish 4 and further fosters the development of listening, speaking, reading, and writing skills. Conversation and writing practice are stimulated through a wide variety of cultural materials. Students continue to delve deeper into Hispanic literature and culture as well as to demonstrate competence in the foreign language. Students will continue their study of the cultural production (literature, film, art) of the Spanish-speaking world. **Successful completion of five units of World Language credits through a departmental examination (Level 5), Checkpoint C. Students enrolled in this course may earn up to six college credits from Adelphi University.**

ADDITIONAL ASL, FRENCH, ITALIAN, AND SPANISH COURSES

SPANISH 1R	1 year, 1 credit	Grades 9-12
Prerequisite: None	Weight: 1.05	Elective

This level is designed for students who have not met the initial proficiency requirements needed to earn a diploma. The emphasis for this course is placed on developing the four basic skills of listening, speaking, reading, and writing. American Sign Language is an introductory course which enables the student to communicate through basic vocabulary, body language, and facial expressions. Students learn the cultural and linguistic differences of the deaf community. This course meets the World Languages requirement for graduation.

ASL, FRENCH, ITALIAN, AND SPANISH 2R/2H	1 year, 1 credit	Grades 9-12
Prerequisite: ASL, French, Italian, or Spanish 1R/1H	Weight: 1.05/1.10	Elective

This level is a continuation of the integration and further development of the four basic skills, with emphasis on the use of the language. Multicultural awareness of the foreign language in relation to the rest of the world’s cultures is broadened at this level. American Sign Language expands the student’s knowledge of ASL grammar, syntax, and vocabulary development. Dialogues, short stories, and narratives focus on expansion of comprehension. Topics that are culturally significant to the deaf community are discussed. This course meets the World Languages requirement for graduation.

ASL, FRENCH, ITALIAN, AND SPANISH 3R/3H

Prerequisite: ASL, French, Italian, or Spanish 2R/2H

1 year, 1 credit

Weight: 1.05/1.10

Grades 10-12

Elective

This level continues to stress communicative proficiency. The four basic skills are expanded so that students are able to comprehend written, spoken, and visual presentations in various media. American Sign Language focuses upon receptive and expressive storytelling, advanced grammatical concepts, and improved expression. Students are expected to work individually, in addition to participating in group activities. **Successful completion of three units of World Language credits, including 3R and 3H, through the locally developed Checkpoint B examination.**

SPANISH FOR THE HERITAGE SPEAKER III (EMHS)

Prerequisite: Spanish for the Heritage Speaker II

1 year, 1 credit

Weight: 1.05

Grades 9-12

Elective

This course is designed for students whose heritage language is Spanish and is equivalent to Spanish III Checkpoint B. A heritage speaker is a student who has learned a language informally, by being exposed to it at home, as opposed to having learned it formally in a school setting. An emphasis will be placed on Spanish reading and writing skills supplemented by spelling and grammar lessons. Native/heritage students will explore the literary genres of myths, fables, legends, poetry, short stories, and novels. Students will produce writing in various formats including well-developed paragraphs, literary response items, expository essays, short stories, or narratives. Effective communication is the solid foundation for success and prosperity in the future course of Spanish 4AP. **Successful completion will result in three units of World Language credits, including Spanish for the Heritage Speaker, through the locally developed Checkpoint B examination.**

CULTURAL APPRECIATION

Prerequisite: None

1 year, 1 credit (EMHS)

1 year, ½ credit (WTCHS)

Weight: 1.05

Grades 9- 12

Grades 9- 12

Elective

This project-based course is designed to expose students to the various cultures within our school and extended community. Activities include field trips which explore music, art history, and culinary experiences. Students gain an awareness of careers found within these subcultures throughout this course.

