

# APRIL LUNCH

MONDAY

TUESDAY

WEDNESDAY

THURSDAY

FRIDAY

3



4



5

6

7



10



CHICKEN SOFT  
TACO'S  
CHIPS & QUESO  
BALNCO  
SAUCE-GF  
CARNITAS BURRITO  
SHRIMP, RICE  
& CHEESE BURRITO

11

WELCOME BACK  
SCHOOL

CHICKEN & WAFFLES  
CHEESEBURGER  
HAMBURGER  
YOGURT & SAVORY  
CRACKER WGR  
PB & J GRAPE  
SANDWICH WGR

12

BEAN & CHEESE  
BURRITO/WGR-PS  
YOGURT & GRAHAM  
CRACKER  
TURKEY & CHEESE  
ON ROLL WGR

13

CHICKEN NUGGETS  
W/GOLDFISH  
CHEESE PIZZA  
ROUND  
PIZZA, NARDONE BROS.  
WGR  
PB & J GRAPE  
SANDWICH WGR

14

CHICKEN STRIPS  
AND EMOTICONS  
CHICKEN & CHEESE  
FLATBREAD SANDWICH  
CHEESY BREAD WGR  
MARINARA SAUCE  
PB & J GRAPE  
SANDWICH WGR

17

CHICKEN TAMALE W/  
GREEN SAUCE  
CHILI & CHEESE TAMALE  
CHICKEN TINGA TOSTADA  
BEAN TOSTADA W/  
CHEESE  
PB & J GRAPE  
SANDWICH WGR

18

CHICKEN & BROCCOLI  
ALFREDO  
PIZZA CRUNCHERS  
W/MARINARA SAUCE  
MINI CORN DOGS  
PB & J GRAPE  
SANDWICH WGR

19

MINI CHEESE  
BURGER/WGR  
PB & J GRAPE  
SANDWICH WGR  
CHIPOTLE CHICKEN  
SWICHES

20

CHEESE PIZZA  
ROUND  
PIZZA, NARDONE BROS.  
WGR  
CHEESY BITES W/  
MARINARA SAUCE  
PB & J GRAPE  
SANDWICH WGR

21



Milk Option

1% Regular Milk

Special Meal Accommodations for Students

A medical statement, signed by a physician, must be on file for  
Meal Accommodations. Ask your Nutrition Services Manager or go to  
[eusdhealthykids.org](http://eusdhealthykids.org) for forms and nutritional information.



EUSDHealthyKids.org Nutrition Services

This institution is an equal opportunity provider.

# APRIL

# LUNCH

## MONDAY

## TUESDAY

## WEDNESDAY

## THURSDAY

## FRIDAY

**24**  
**PANCAKE BRUNCH 4**  
**LUNCH**  
**HOT DOG/WGR**  
**GRILLED CHEESE**  
**SANDWICH-PS**  
**PB & J GRAPE**  
**SANDWICH WGR**

**25**  
**CARNITAS STREET**  
**TACOS**  
**JACK CHEESE**  
**ENCHILADA'S**  
**BEAN& CHEESE**  
**BURRITO/WGR**  
**PB & J GRAPE**  
**SANDWICH WGR**

**26**  
**SPAGHETTI & MEATBALLS**  
**W/GARLIC BREAD**  
**BEAN& CHEESE**  
**BURRITO/WGR**  
**YOGURT & GRAHAM**  
**CRACKER**  
**PB & J GRAPE**  
**SANDWICH WGR**

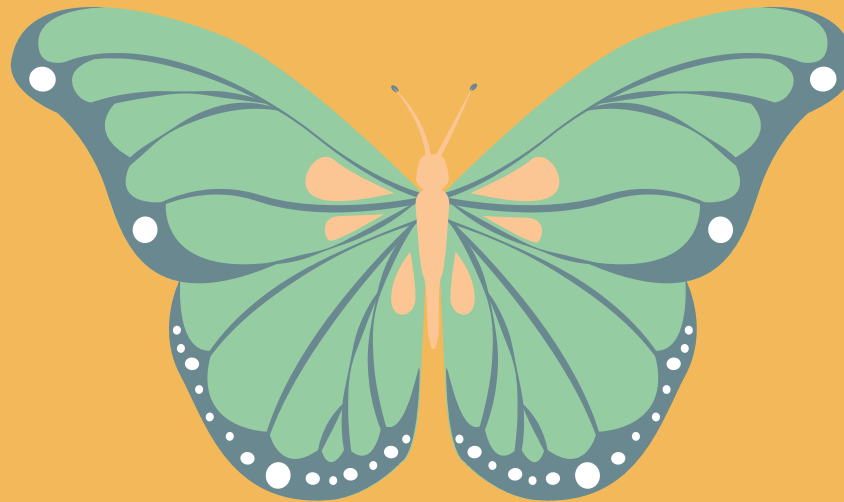
**27**  
**CORN DOG W/**  
**CRACKER**  
**YOGURT & GRAHAM**  
**CRACKER**  
**TURKEY & CHEESE**  
**ON ROLL WGR**

**28**  
**CHEESE PIZZA**  
**ROUND**  
**PIZZA, NARDONE BROS.**  
**WGR**  
**BAKED CHICKEN &**  
**CORNBREAD POPPERS**  
**PB & J GRAPE**  
**SANDWICH WGR**

This institution is an equal opportunity provider.

Keep In Mind...

**MENUS ARE SUBJECT  
TO CHANGE WITHOUT  
NOTICE .**



**MILK OPTION**  
**1% REGULAR MILK**

**SPECIAL MEAL ACCOMODATIONS FOR STUDENTS**  
**A MEDICAL STATEMENT, SIGNED BY A PHYSICIAN, MUST BE**  
**ON FILE FOR MEALACCOMODATIONS. ASK YOUR NUTRITION**  
**SERVICES MANAGER OR GO TO EUSDHEALTHYKIDS.ORGFOR**  
**FORMS AND NUTRITIONAL INFORMATION.**



**EUSDHEALTHYKIDS.ORG NUTRITION SERVICES**