

AC REYNOLDS HIGH SCHOOL

PROJECT DESCRIPTION:

PHONE: (828) 298-2500
PIN: 13-9667.19.62.0176

REMOVE AND DISPOSE OF EXISTING ASBESTOS TRANSITE PANELS ACCORDING TO REQUIREMENTS OF LOCAL JURISDICTION. BCS WILL PROVIDE A DUMPSTER FOR DISPOSAL OF ASBESTOS PANELS (BELVIN HALL 775-4244 AS REQUESTED BY CONTRACTOR. MIKE MATTHEWS WITH WNC AIR QUALITY TO BE INVITED TO PRE-CONSTRUCTION MEETING.

REPLACE WITH WEATHER BARRIER, INSULATION AND METAL WALL PANELS. PROVIDE NEW NAILERS, METAL EDGE AND EPDM FLASHINGS FOR ROOF TIE-IN.

A QUALIFIED COMMERCIAL ROOFING SUB-CONTRACTOR AUTHORIZED TO INSTALL FIRESTONE, CARLISLE OR VERSICO ROOFING.

GENERAL CONTRACTOR IS RESPONSIBLE FOR ACQUIRING ALL JURISDICTIONAL PERMITS.

ALTERNATE #1:
IN PLACE OF NOTED HAT CHANNELS, FASTENERS AND 2" EXTRUDED INSULATION: PROVIDE 1 1/2" THICK 25 PSI POLYISOCYANURATE INSULATION AND 16 GA Z-PURLINS WITH TAPCONS ON THE SAME SPACING AS HAT CHANNELS. ALTERNATE WILL REQUIRE ONE LESS NEW ROOF EDGE NAILER.

← **MAIN ENTRANCE**

SHEET SCHEDULE:

- | | |
|---------|-------------------|
| COVER | OVERALL ROOF PLAN |
| A-104.1 | ROOF PLAN |
| A-201.1 | ELEVATIONS |
| A-302.1 | WALL SECTIONS |
| A-501.1 | DETAILS |

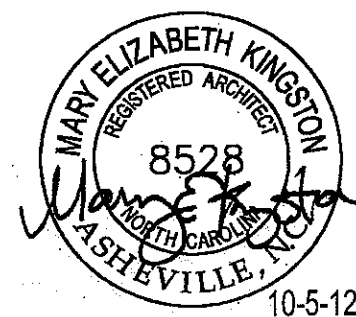
AC REYNOLDS HIGH SCHOOL

ONE ROCKET DRIVE
ASHEVILLE, NC 28803

13- ACRHS MINITORIUM WALL PANEL REPLACEMENT

**Buncombe County Schools
Facilities and Planning**

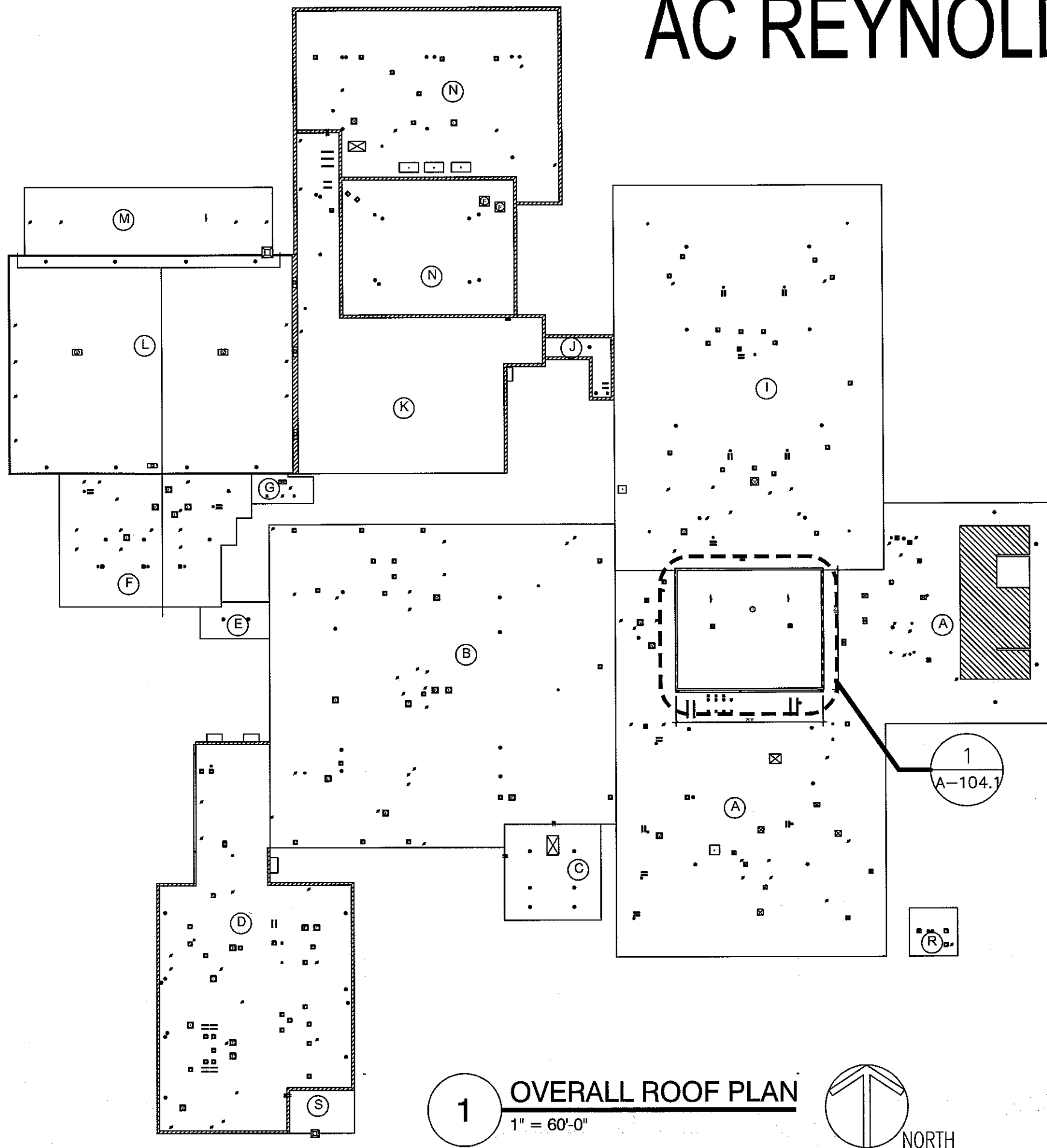
Timothy Fierle AIA, Director
175 Bingham Road □ Asheville, N.C. 28806-3800
Phone: (828) 255-5916 Fax: (828) 255-5923



COVER

DESIGNED BY: MBK
DATE: OCTOBER 5, 2012

PROJECT CODE:

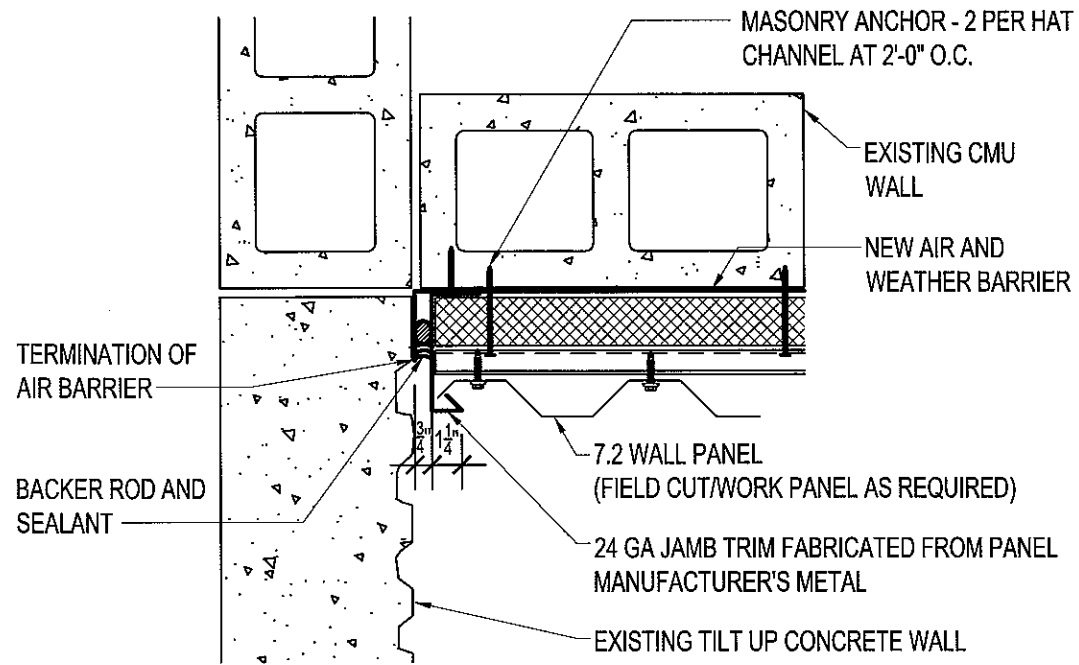


1 OVERALL ROOF PLAN
1" = 60'-0"

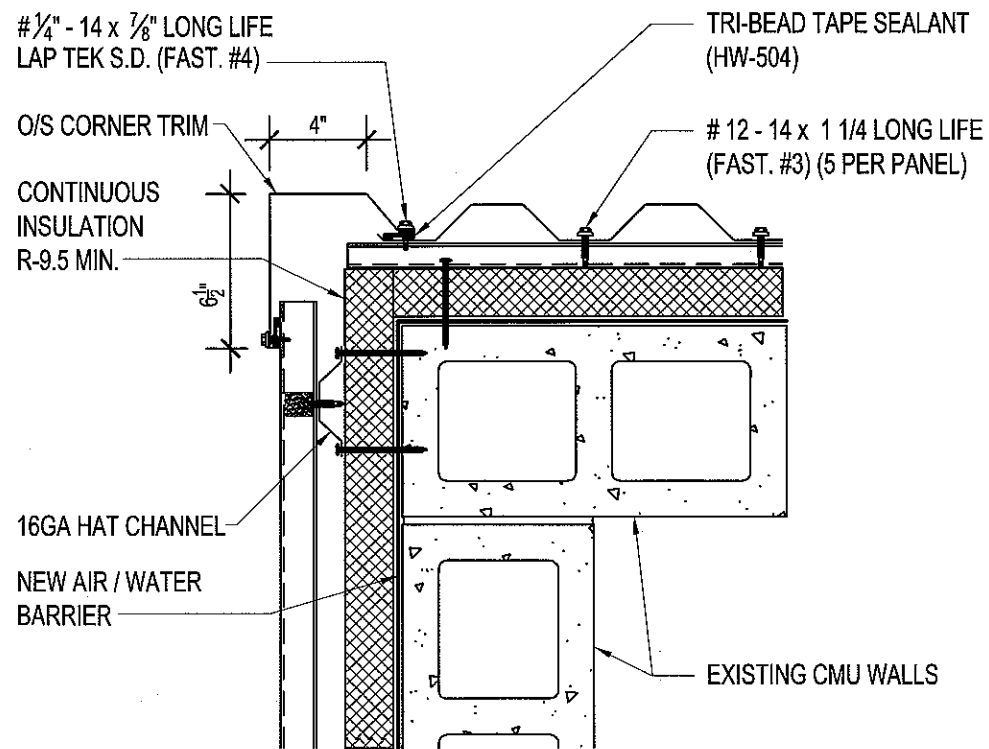




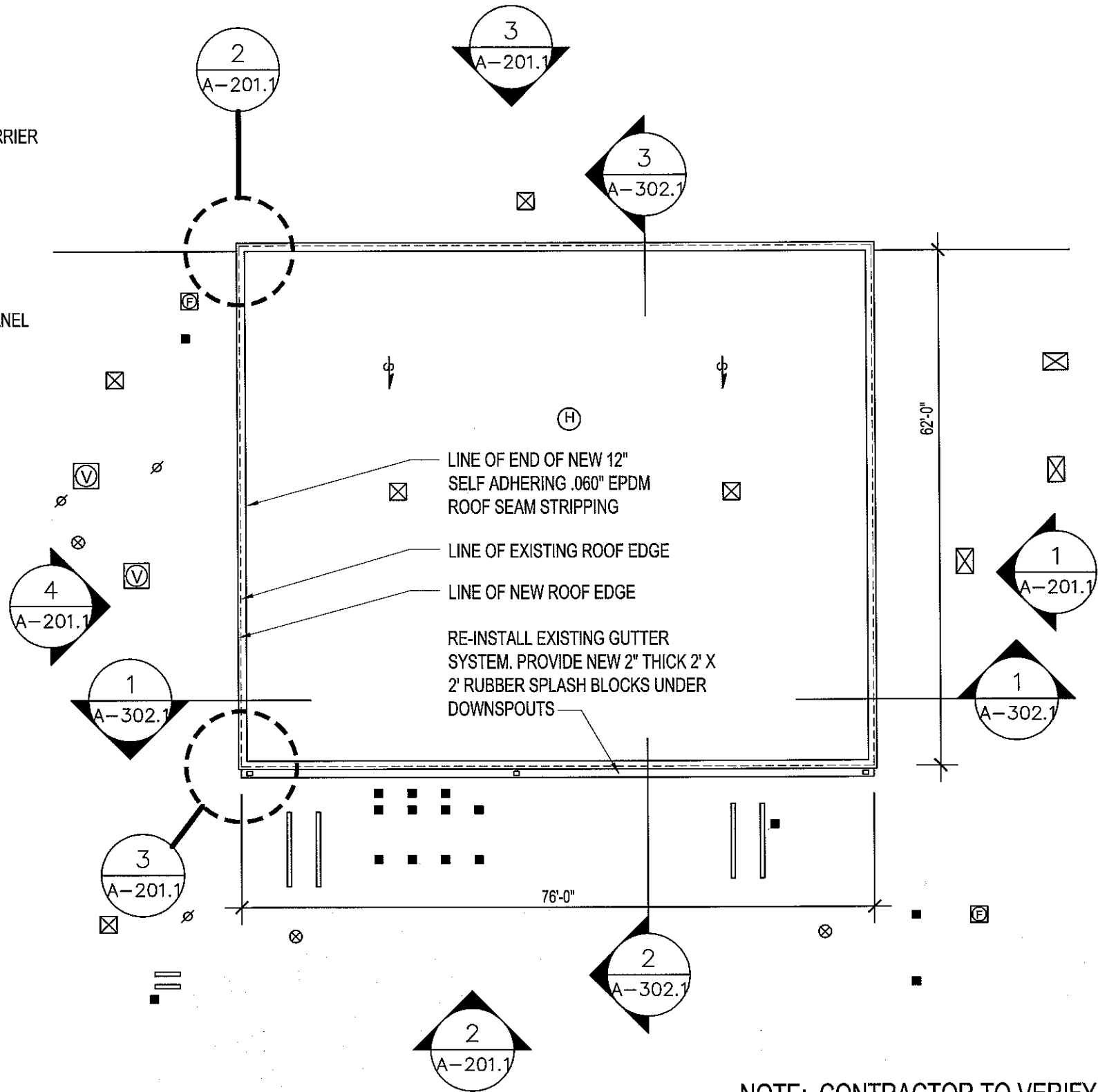
10-5-12



2 WALL TERMINATION DETAIL
1 1/2" = 1'-0"



3 OUTSIDE CORNER DETAIL
1 1/2" = 1'-0"



1 PLAN
1/16" = 1'-0"

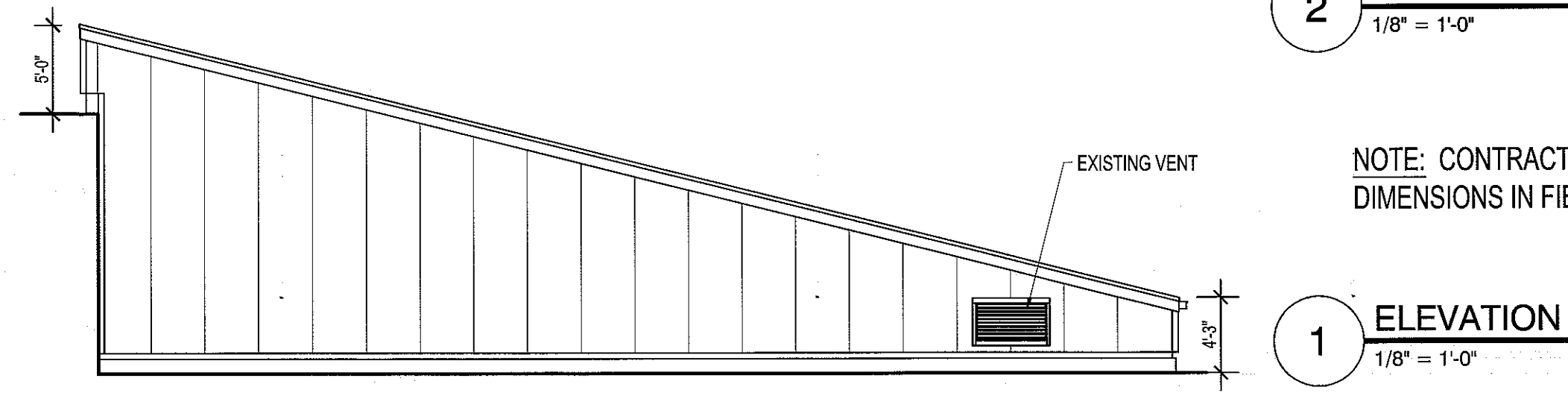
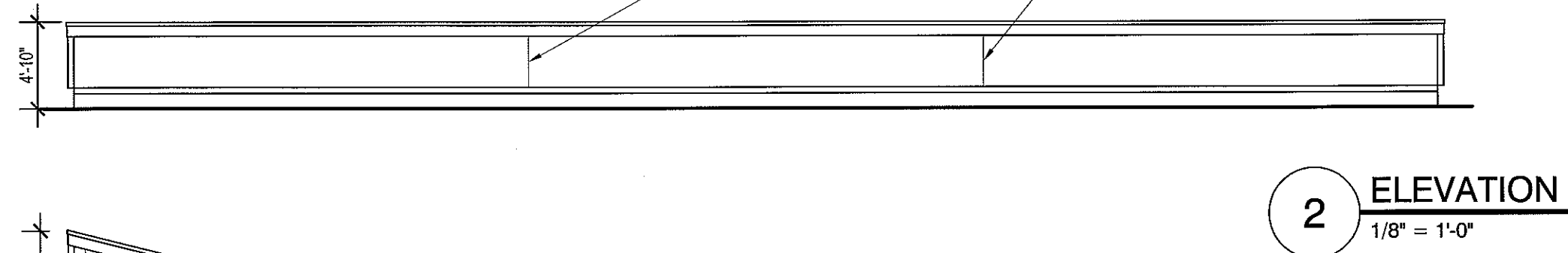
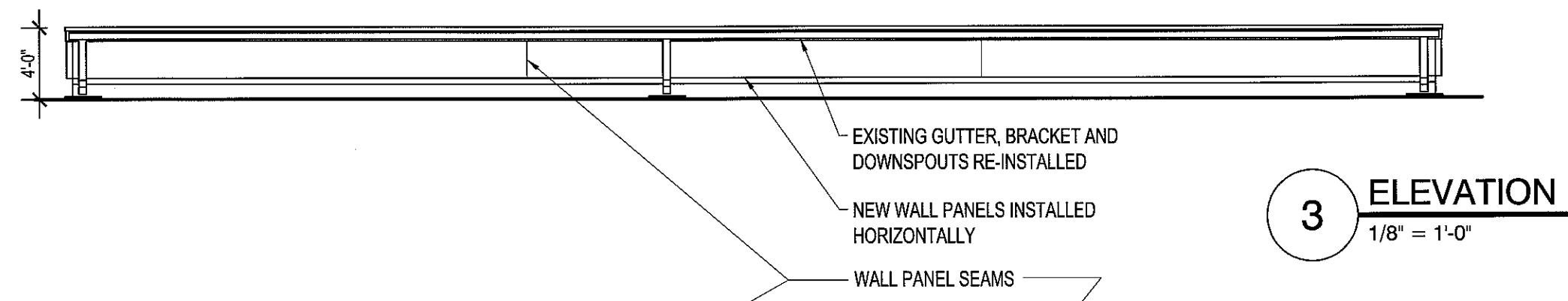
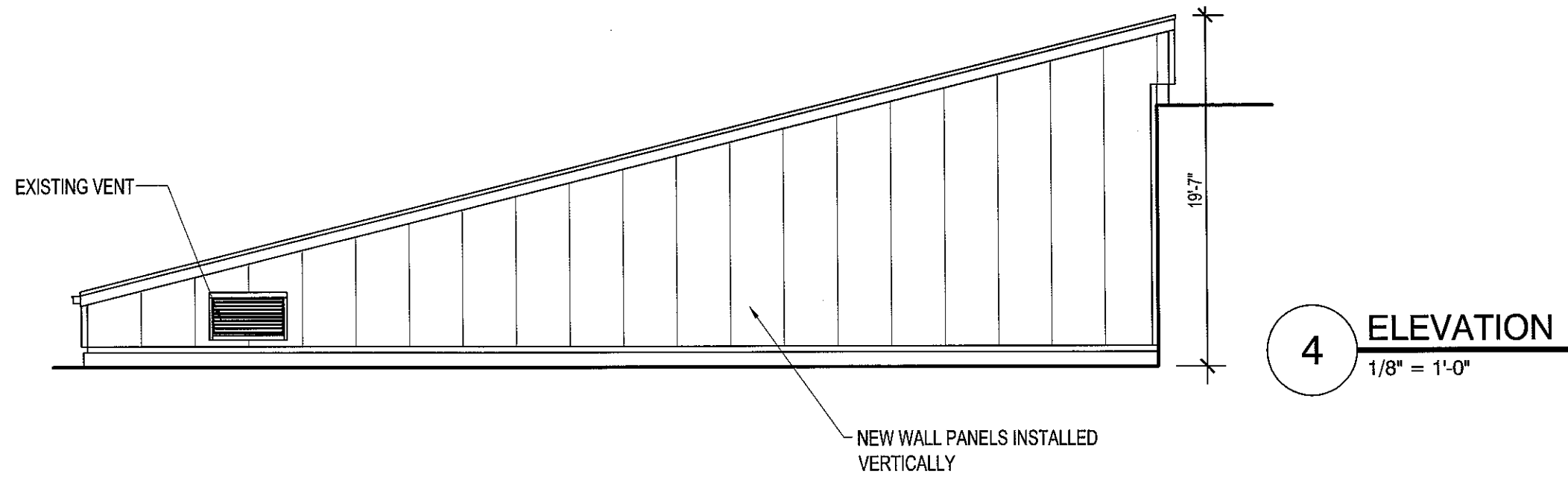


NOTE: CONTRACTOR TO VERIFY DIMENSIONS IN FIELD

A-104.1

DESIGNED BY: MBK
DATE: OCTOBER 5, 2012

PROJECT CODE:



NOTE: CONTRACTOR TO VERIFY DIMENSIONS IN FIELD



A-201.1

DESIGNED BY: MBK
DATE: OCTOBER 5, 2012

PROJECT CODE:

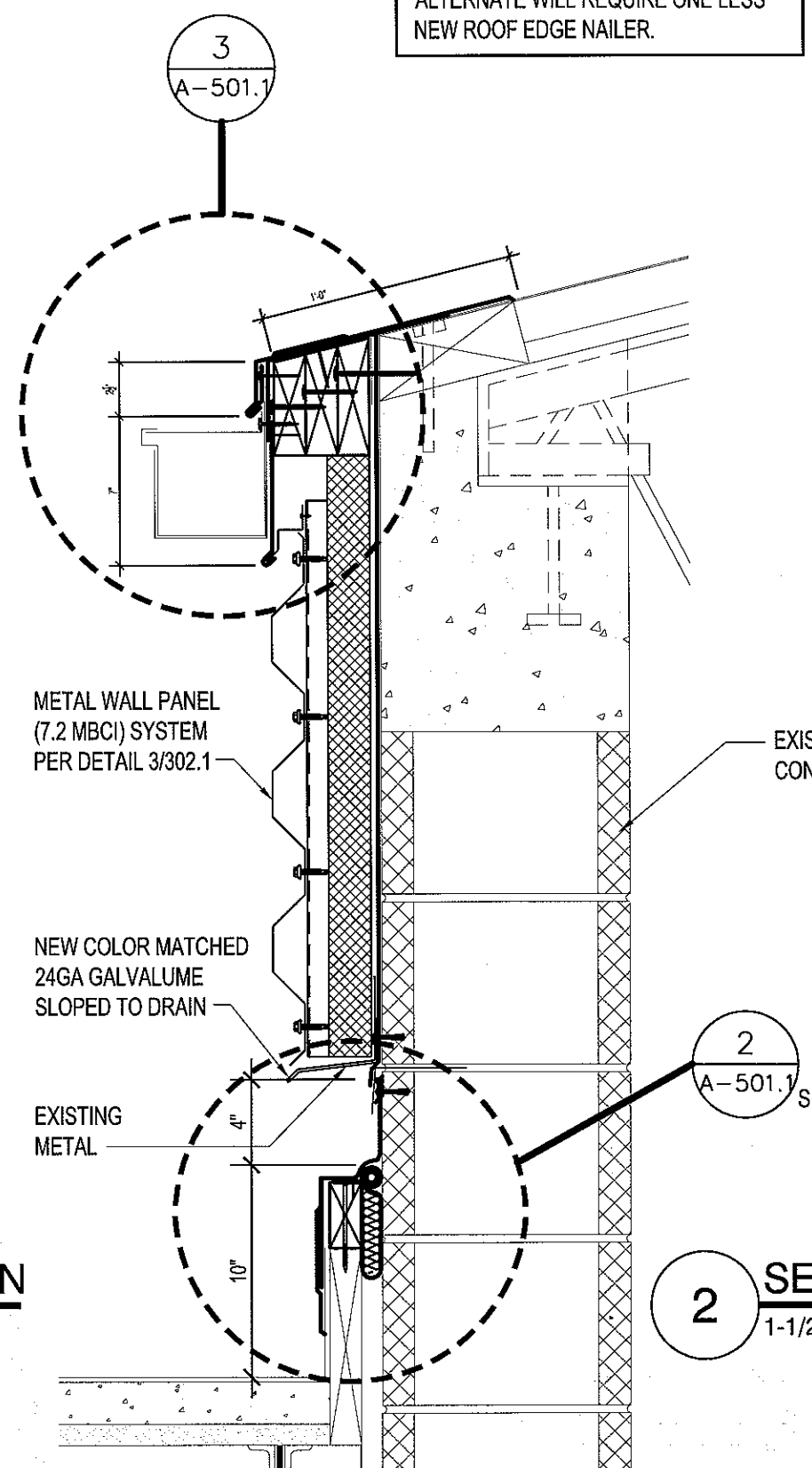
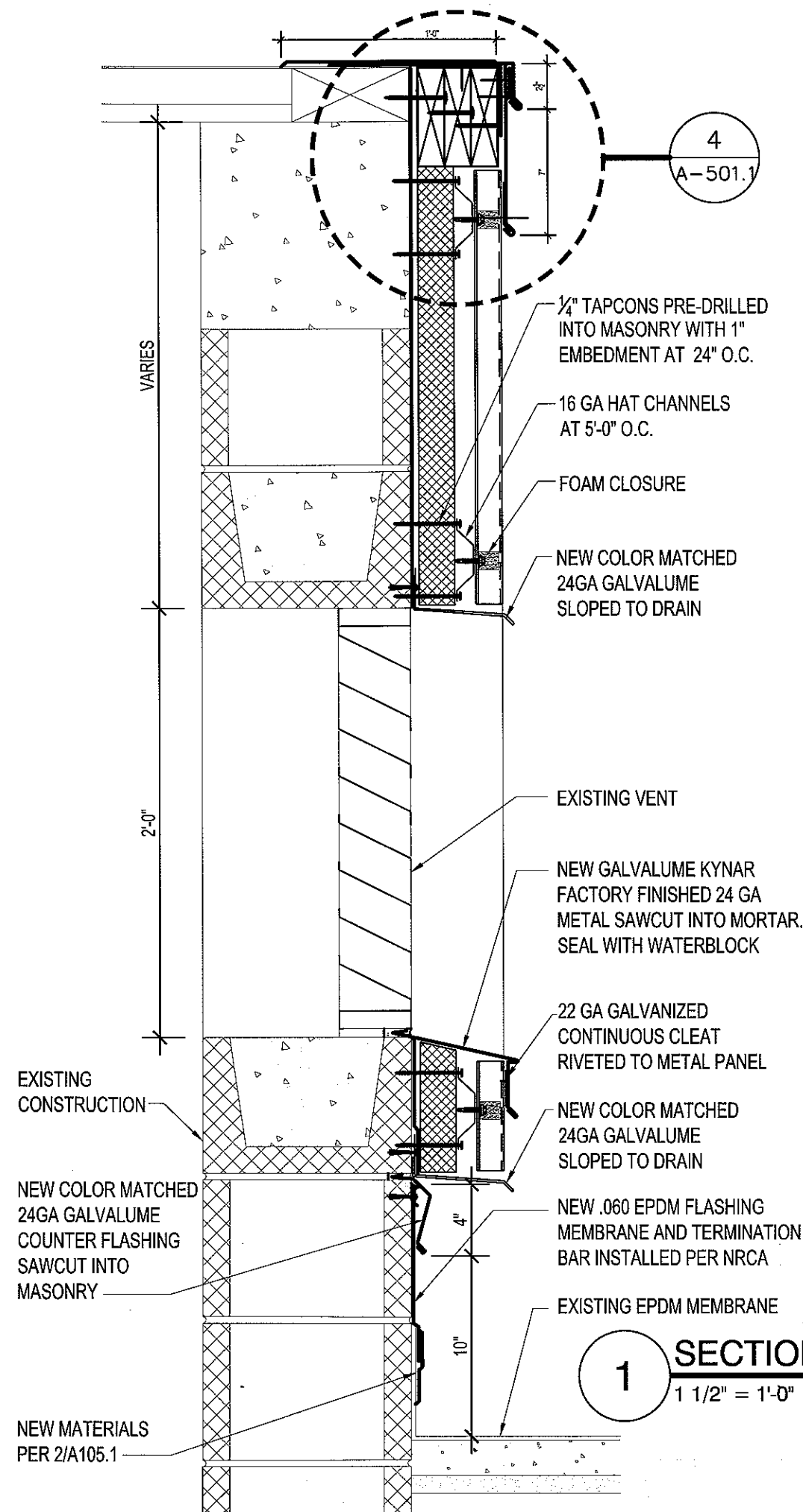


10-5-12

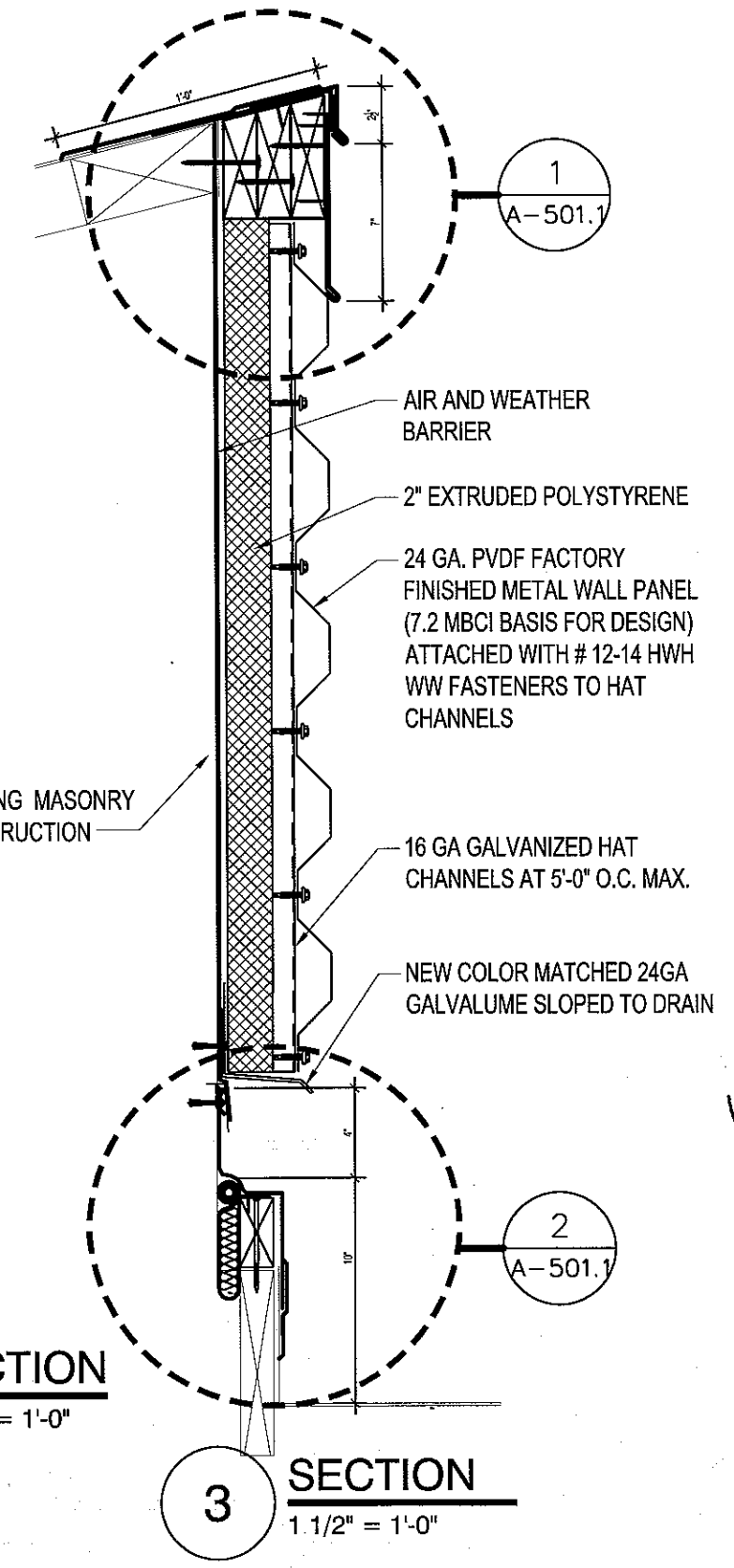
A-302.1

DESIGNED BY: MBK
DATE: OCTOBER 5, 2012

PROJECT CODE:



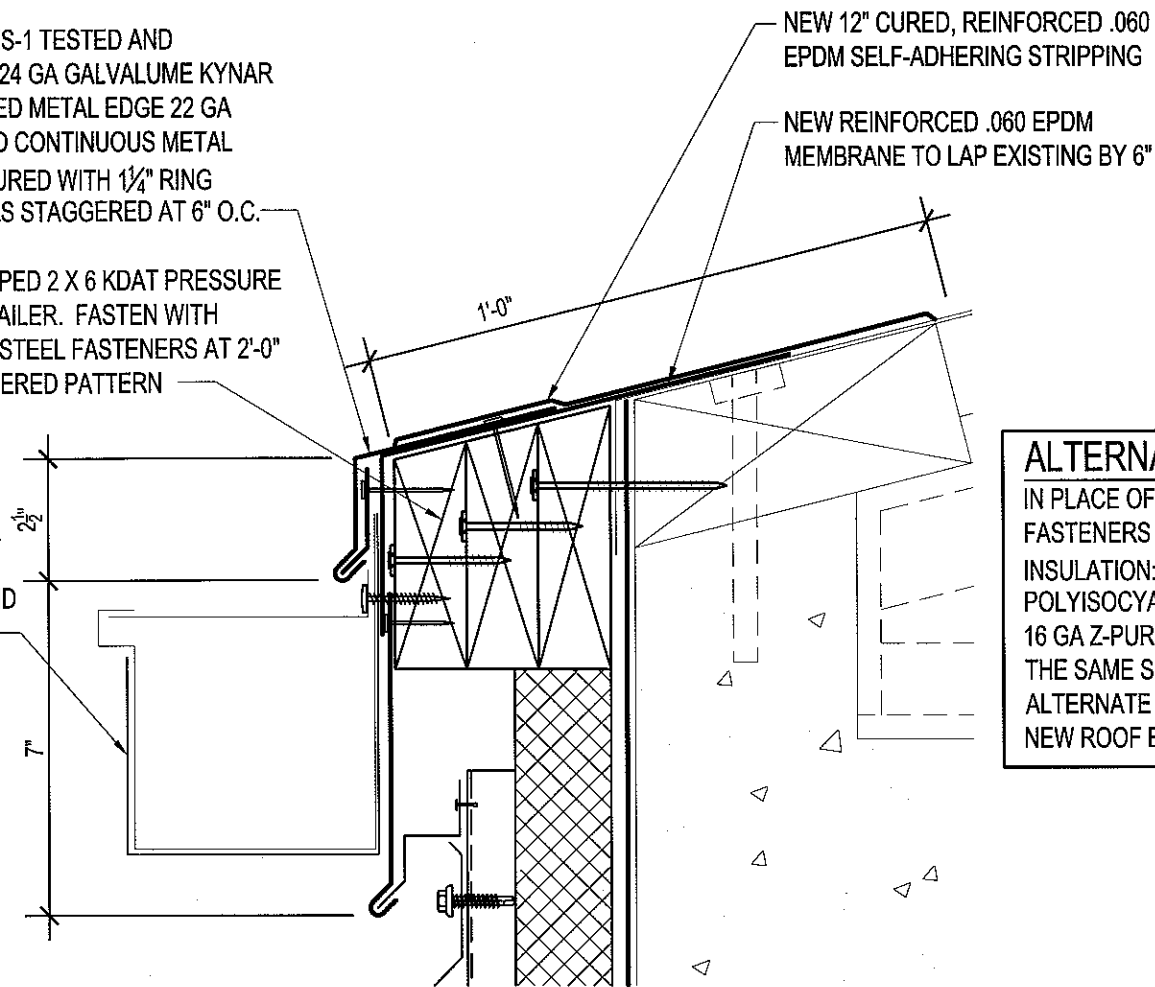
ALTERNATE #1:
IN PLACE OF NOTED HAT CHANNELS, FASTENERS AND 2" EXTRUDED INSULATION: PROVIDE 1 1/2" THICK 25 PSI POLYISOCYANURATE INSULATION AND 16 GA Z-PURLINS WITH TAPCONS ON THE SAME SPACING AS HAT CHANNELS. ALTERNATE WILL REQUIRE ONE LESS NEW ROOF EDGE NAILER.



ANSI-SPRI ES-1 TESTED AND APPROVED 24 GA GALVALUME KYNAR PRE-FINISHED METAL EDGE 22 GA GALVANIZED CONTINUOUS METAL CLEAT SECURED WITH 1/4" RING SHANK NAILS STAGGERED AT 6" O.C.

(3) NEW RIPPED 2 X 6 KDAT PRESSURE TREATED NAILER. FASTEN WITH STAINLESS STEEL FASTENERS AT 2'-0" O.C. STAGGERED PATTERN

RE-INSTALL EXISTING GUTTER AND BRACKETS

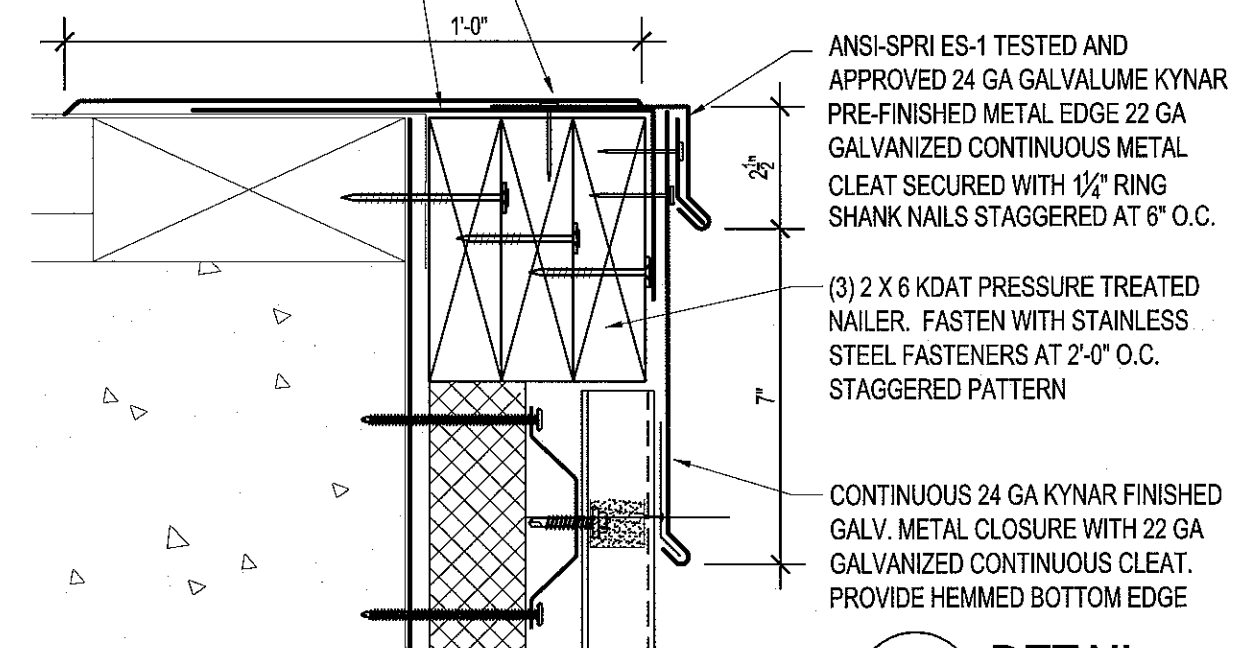


ALTERNATE #1:
 IN PLACE OF NOTED HAT CHANNELS, FASTENERS AND 2" EXTRUDED INSULATION: PROVIDE 1 1/2" THICK 25 PSI POLYISOCYANURATE INSULATION AND 16 GA Z-PURLINS WITH TAPCONS ON THE SAME SPACING AS HAT CHANNELS. ALTERNATE WILL REQUIRE ONE LESS NEW ROOF EDGE NAILER.

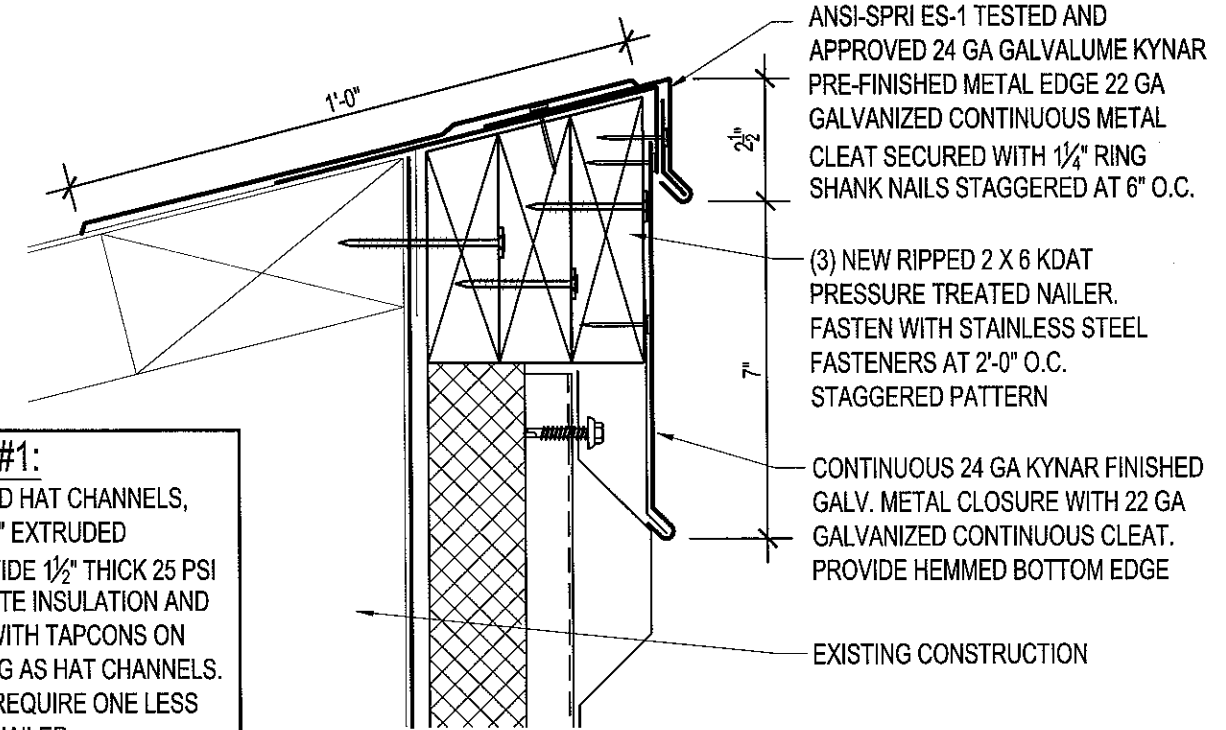
3 SECTION
 3" = 1'-0"

NEW 12" CURED, REINFORCED .060 EPDM SELF-ADHERING STRIPPING

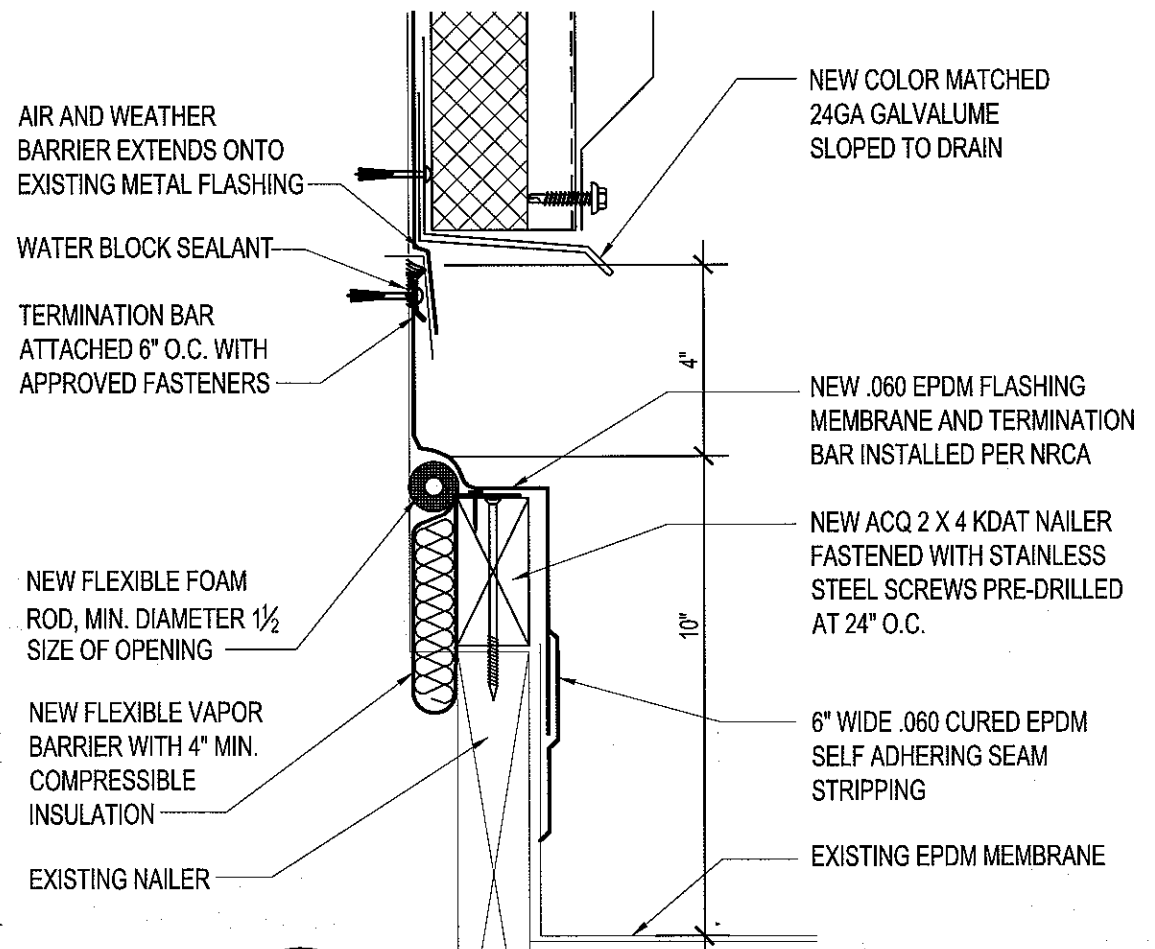
NEW REINFORCED .060 EPDM MEMBRANE TO LAP EXISTING BY 6"



4 DETAIL
 3" = 1'-0"



1 DETAIL
 3" = 1'-0"



2 DETAIL
 3" = 1'-0"

