

**ADDENDUM #2**

**October 23, 2012**

**TRANSMITTED VIA EMAIL: 7 pages**

**TO: ALL PLAN HOLDERS AND POTENTIAL BIDDERS**  
**FROM: RON VENTURELLA, PURCHASING OFFICER** *RV*  
**SUBJECT: 13-AC REYNOLDS HIGH MINITORIUM WALL PANEL REPLACEMENT (RPF 30-12)**

The following changes, revisions, additions, and/or clarifications to the plans and/or specifications are hereby made a part of the original documents. **Be sure to acknowledge this addendum on the bid sheet.**

**Addendum # 2**

1. Clarification: Notes relating to "Hat Channel" or "Z-purlin": Provide 16ga minimum per MBCI engineering, Basis for Design.
2. Provide Allowance #1: Per attached drawings, provide firestopping as noted. Allowance amount is \$ 4598.00. Subcontracted work to be provided by Garnet Hill Construction, firestopping specialty contractor. Contact: Ed Caskey, [\(828\) 206-0368](tel:8282060368) or [garnethillinc@aol.com](mailto:garnethillinc@aol.com).
3. References to Existing wall panel removal in the Documents: Wall panel removal will be completed by Owner. Contractor to coordinate construction schedule with panel removal.
4. Firestopping drawings attached.

**End of 13-AC REYNOLDS HIGH MINITORIUM WALL PANEL REPLACEMENT (RPF 30-12)**  
**Addendum # 2**

# A. C. REYNOLDS HIGH SCHOOL



PHONE: (828) 298-2500  
PIN: 13-9667.19.62.0176

ELEVATING YOUNG MINDS

## AC REYNOLDS HIGH SCHOOL

ONE ROCKET DRIVE  
ASHEVILLE, NC 28803

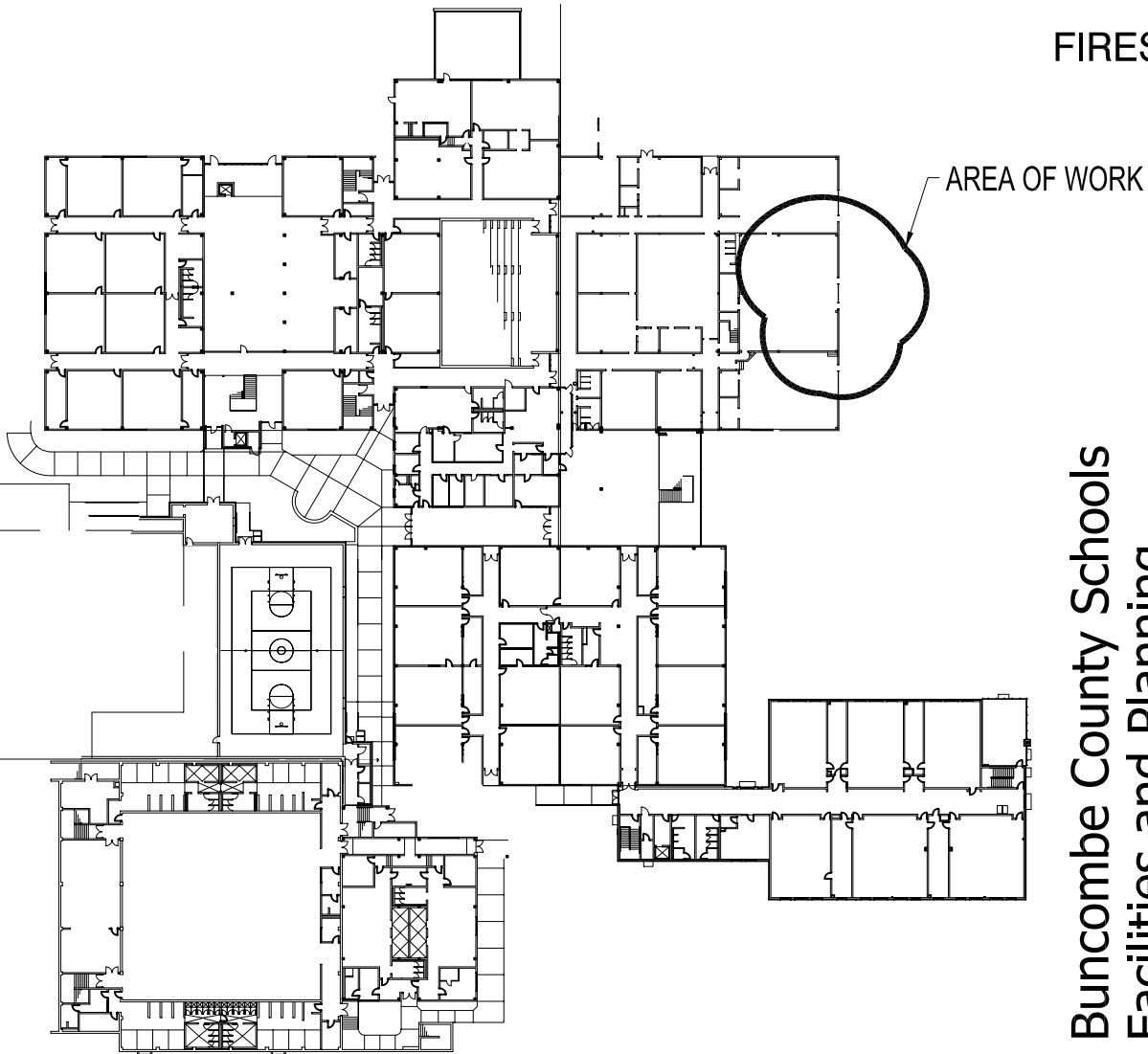
### 13- ACRHS MINITORIUM WALL PANELS

### FIRESTOPPING

### PROJECT DESCRIPTION:

PROVIDE FIRESTOPPING AT NEW CURTAINWALL AND ADJACENT SLAB EDGE TO PROVIDE 1 HOUR FIRE SEPARATION BETWEEN LOWER AND UPPER LEVELS. PROVIDE COMPLIANCE WITH JURISDICTIONAL PERMITTING.

## FRONT OF SCHOOL



## Buncombe County Schools Facilities and Planning

Timothy Fierle AIA, Director

175 Bingham Road □ Asheville, N.C. 28806-3800  
Phone: (828) 255-5916 Fax: (828) 255-5923

### SHEET SCHEDULE:

COVER	OVERALL PLAN
A102.1	PARTIAL FLOOR PLAN
SK-1	DETAILS
157903a	HILTI ENGINEERING JUDGEMENT
163277a	HILTI ENGINEERING JUDGEMENT
RNS-002	THERMAFIBER DETAILS



10-22-12

Addendum #2: ACRHS  
Minitorium Wall Panels

# COVER



**AC REYNOLDS HIGH SCHOOL**

ONE ROCKET DRIVE  
ASHEVILLE, NC 28803

**13- ACRHS MINITORIUM WALL PANELS**

**FIRESTOPPING**

**Buncombe County Schools  
Facilities and Planning**

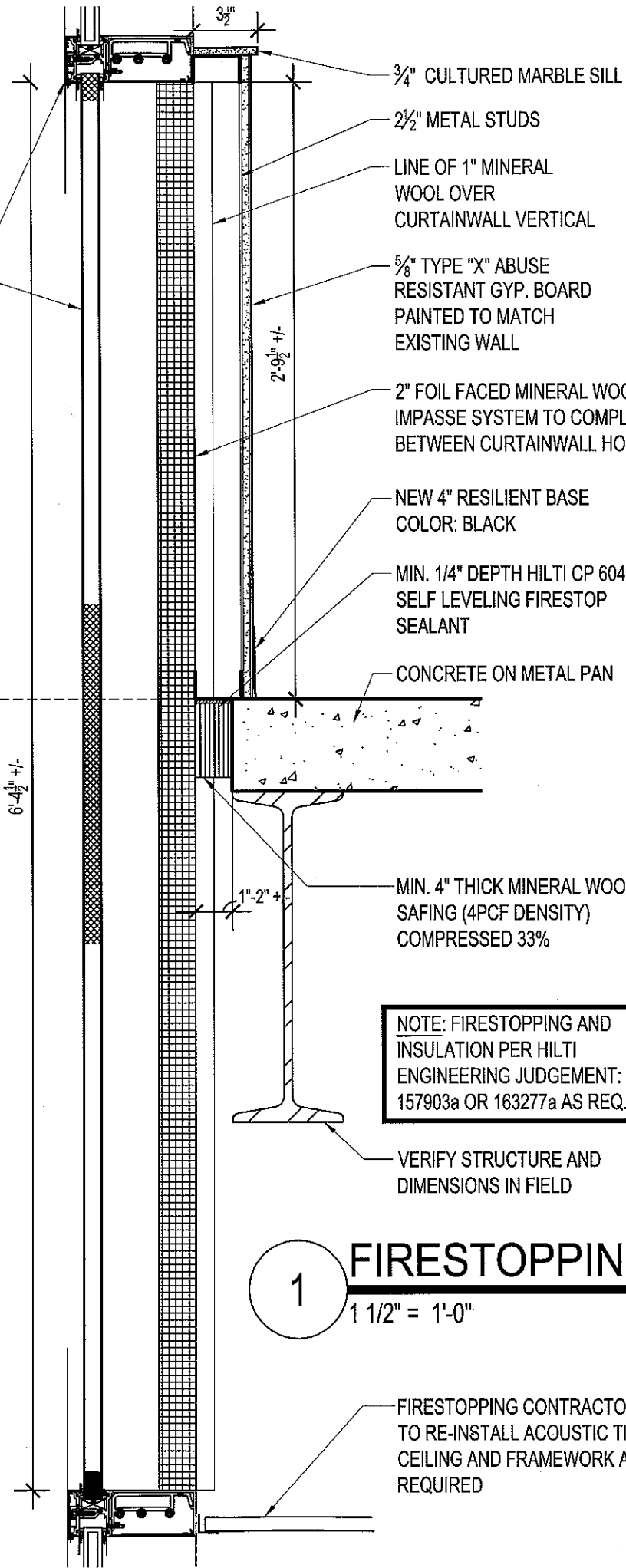
Timothy Fierle AIA, Director

175 Bingham Road □ Asheville, N.C. 28806-3800

Phone: (828) 255-5916 Fax: (828) 255-5923

NEW CURTAINWALL SYSTEM AND INSULATED PANEL BY BRITT AND TILSON

LINE OF TOP OF FLOOR



NOTE: FIRESTOPPING AND INSULATION PER HILTI ENGINEERING JUDGEMENT: 157903a OR 163277a AS REQ.

VERIFY STRUCTURE AND DIMENSIONS IN FIELD

**1 FIRESTOPPING**  
1 1/2" = 1'-0"

FIRESTOPPING CONTRACTOR TO RE-INSTALL ACOUSTIC TILE CEILING AND FRAMEWORK AS REQUIRED



10-22-12

Addendum #2: ACRHS  
Minitorium Wall Panels

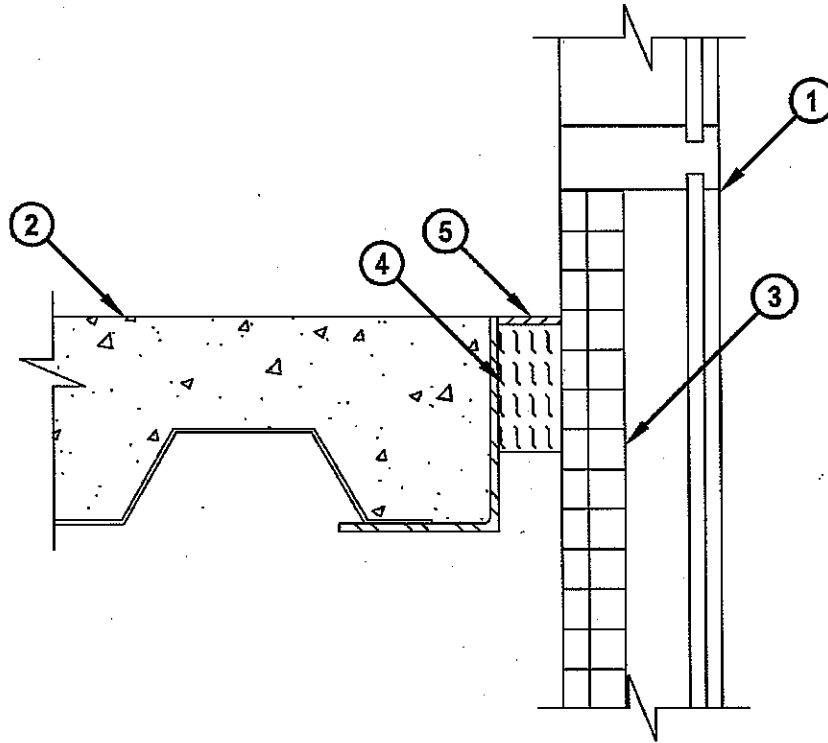
**WALL SECTION  
SK-1**

JS

### ENGINEERING JUDGMENT FIRESTOP DETAIL

PROJECT : REYNOLDS HIGH SCHOOL  
CONTRACTOR : BUNCOMBE COUNTY SHCOOLS  
F-RATING = 1-HR. (SEE NOTE NO. 2 BELOW)

#### CROSS-SECTIONAL VIEW



1. ALUMINUM SPANDREL AND ALUMINUM MULLION CURTAIN WALL ASSEMBLY (NON FIRE-RATED).
2. CONCRETE FLOOR OVER METAL DECKING ASSEMBLY (MINIMUM 3-1/2" THICK) (1-HR. FIRE-RATING).
3. MINIMUM 2" THICK FOIL FACED CURTAIN WALL INSULATION (MINERAL WOOL MIN. 8 PCF DENSITY) SECURELY ATTACHED TO FRAMING MEMBERS PER METHODS DESCRIBED IN ANY UL OR INTERTEK APPROVED PERIMETER JOINT SYSTEM. CURTAIN WALL INSULATION TO COMPLETELY FILL SPANDREL AT FLOOR LEVEL AND COVER VERTICAL MULLIONS.
4. MINIMUM 4" THICKNESS MINERAL WOOL SAFING (MIN. 4 PCF DENSITY) COMPRESSED 33%.
5. MINIMUM 1/4" DEPTH HILTI CP 604 SELF LEVELING FIRESTOP SEALANT.

NOTES : 1. MAXIMUM WIDTH OF JOINT = 2".  
2. FIRE-RATING OF ASSEMBLY IS DEPENDENT UPON THE PERFORMANCE OF CURTAIN WALL ASSEMBLY UNDER FIRE CONDITIONS.

THIS ENGINEERING JUDGMENT REPRESENTS A FIRESTOP SYSTEM THAT WOULD BE EXPECTED TO PASS THE STATED RATINGS IF TESTED.  
(REFERENCE : UL SYSTEM NO. CW-D-2026)



HILTI, Inc.  
Tulsa, Oklahoma USA (800) 879-8000  
Designed by *Erin L. Mann*

Sheet	1 of 1
Scale	3/16" = 1"
Date	May 18, 2012

Drawing No.  
**157903a**

*Saving Lives through Innovation and Education*

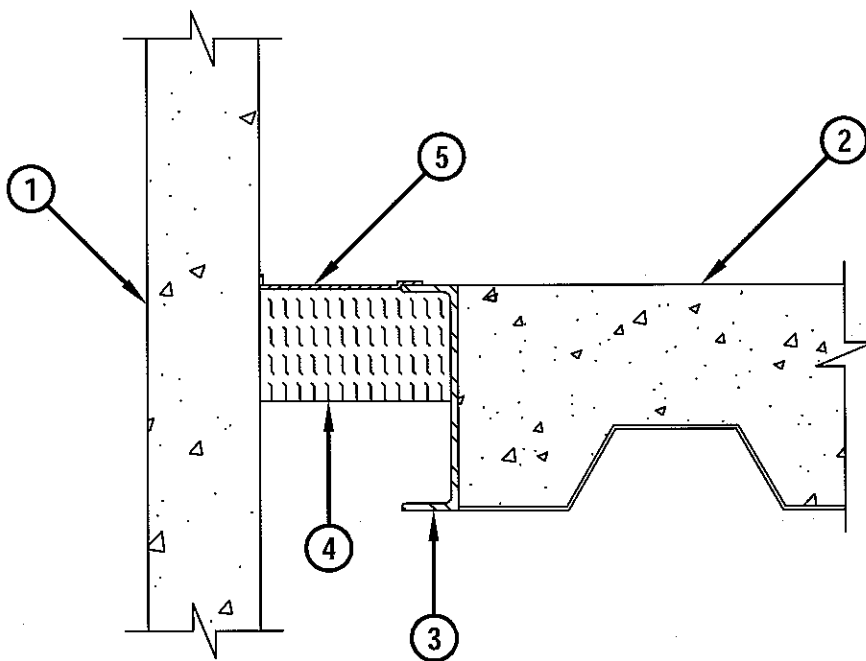
*Addendum #2  
ACRHS Minitorium Wall Panels*

DH

# ENGINEERING JUDGMENT FIRESTOP DETAIL

PROJECT : REYNOLDS HIGH SCHOOL  
CONTRACTOR : GARNETT HILL CONSTRUCTION  
F-RATING = 1-HR. (SEE NOTE NO. 2 BELOW)



## CROSS-SECTIONAL VIEW



1. PRECAST CONCRETE CURTAIN WALL ASSEMBLY (MINIMUM 4" THICK) (NON FIRE-RATED).
2. CONCRETE FLOOR OVER METAL DECKING ASSEMBLY (MINIMUM 5" THICK) (1-HR. FIRE-RATING).
3. STRUCTURAL STEEL CHANNEL (NON FIRE-RATED).
4. MINIMUM 4" THICKNESS MINERAL WOOL SAFING (MIN. 4 PCF DENSITY) COMPRESSED 33%, FLUSH WITH TOP SURFACE OF FLOOR ASSEMBLY.
5. MINIMUM 1/8" (WET) THICKNESS HILTI CFS-SP WB FIRESTOP JOINT SPRAY TO COMPLETELY COVER MINERAL WOOL, OVERLAPPING MINIMUM 1/2" ONTO CONCRETE FLOOR AND CURTAIN WALL.

NOTES : 1. MAXIMUM WIDTH OF JOINT = 3".  
2. FIRE-RATING OF ASSEMBLY IS DEPENDENT UPON THE PERFORMANCE OF CURTAIN WALL ASSEMBLY UNDER FIRE CONDITIONS.

THIS ENGINEERING JUDGMENT REPRESENTS A FIRESTOP SYSTEM THAT WOULD BE EXPECTED TO PASS THE STATED RATINGS IF TESTED.  
(REFERENCE : UL SYSTEM NO. CW-D-1001)

 <b>Hilti Firestop Systems</b>	HILTI, Inc. Tulsa, Oklahoma USA (800) 879-8000	<i>Sheet</i> 1 of 1 <i>Scale</i> 5/32" = 1"	<i>Drawing No.</i> <b>163277a</b>
	<i>Designed by</i> 	<i>Date</i> Sep. 20, 2012	

**Saving Lives through Innovation and Education**

ACRHS Addendum # 2  
Ministeriums Wall Panels



Reynolds School  
 DRAW NO: RNS-002  
 DATE: 07/13/2012

© COPYRIGHT THERMAFIBER INC., 2009  
 THESE DRAWINGS ARE THE SOLE AND EXCLUSIVE  
 INFORMATION OF THERMAFIBER INC.  
 PROPERTY OF THERMAFIBER AND CONTAIN SENSITIVE  
 INFORMATION. ANY REPRODUCTION, DISSEMINATION OF  
 THESE DRAWINGS TO UNAUTHORIZED PERSONS OR  
 STRIKELY PROHIBITED. THIS DOCUMENT AND ALL  
 COPIES MUST BE RETURNED ON DEMAND.

ISSUE NUM.	DATE	DESCRIPTION

APPROVAL: \_\_\_\_\_ DATE APRV: / /  
 MUST SIGN AND DATE

APRV BY: \_\_\_\_\_  
 Signature: \_\_\_\_\_  
 Printed: \_\_\_\_\_

TOLERANCES: Dimensional Angle  
 ±.000 ±.000 ±2°

SCALE: SIZE: DRAWN BY: **SPR**  
 NTS

