

**A.C. REYNOLDS HIGH**

# A. C. REYNOLDS HIGH SCHOOL

PHONE: (828) 298-2500

PN: 13-9667.19.62.0176

## PROJECT DESCRIPTION:

PROVIDE NEW CURTAIN WALL WINDOW SYSTEM AT THE AREAS INDICATED IN THE VOCATIONAL / TECHNICAL WING OF THE SCHOOL.  
REMOVE EXISTING SYSTEM AND ASBESTOS CONTAINING PANELS IN THE EXISTING WINDOW SYSTEMS. DISPOSE OF PER REGULATIONS.  
CONTRACTOR IS RESPONSIBLE FOR ALL PERMIT COSTS.

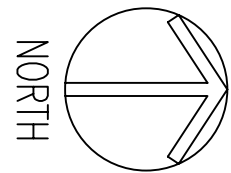
## DESIGN AND TECHNICAL CONTACT:

MARY BETH KINGSTON, AIA, RPO, LEED AP  
ASST. FACILITIES DIRECTOR, BUNCOMBE COUNTY SCHOOLS  
PHONE: 828-255-5916  
FAX: 828-255-5923

## BIDDING & ADMINISTRATIVE CONTACT:

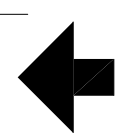
RON VENTURELLA  
PURCHASING OFFICER  
PHONE: 828-255-5891  
FAX: 828-251-1730

**2 VICINITY MAP**  
NOT TO SCALE

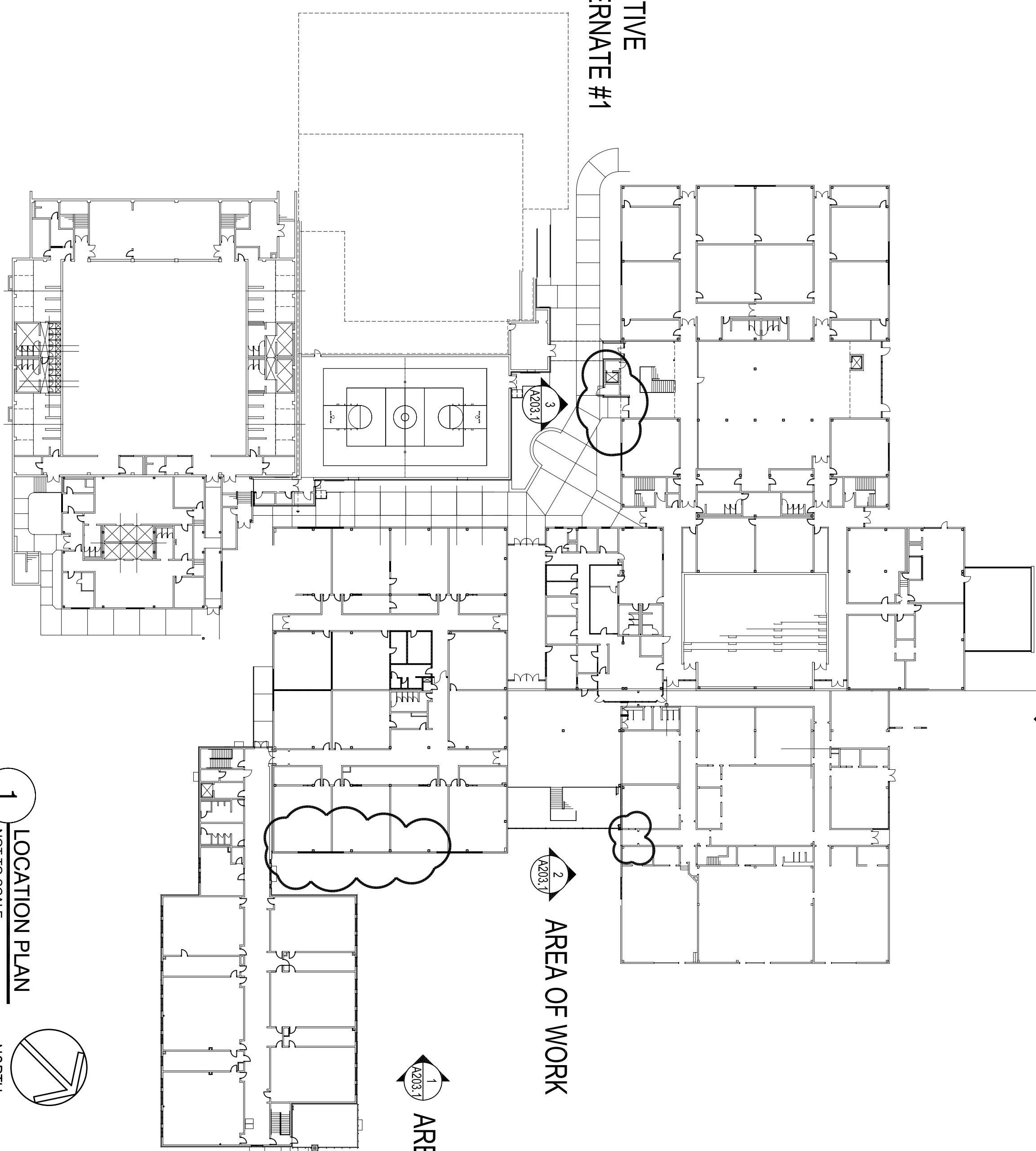


NORTH

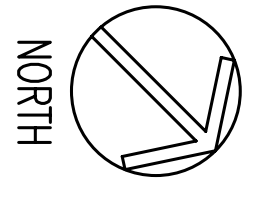
**MAIN ENTRANCE**



**ADDITIVE ALTERNATE #1**



**1 LOCATION PLAN**  
NOT TO SCALE



NORTH

## GENERAL NOTES:

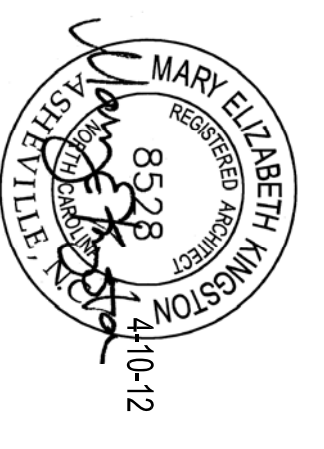
- 1) ALL GLASS TO BE TEMPERED, LOW-E AND TINTED WHETHER NOTED OR NOT.
- 2) VERIFY DIMENSIONS AND OPENINGS IN FIELD & MAKE NECESSARY ACCOMMODATIONS AT NO ADDITIONAL COST TO THE OWNER. MAINTAIN EQUAL SPACING BETWEEN BRAYS UNLESS OTHERWISE NOTED.
- 3) FRAME MEMBERS SHALL BE #6, STANDARD DARK BRONZE FINISH.
- 4) INSULATED PANELS SHALL MATCH FRAME COLOR.
- 5) THE IN-GLASS EXISTING SUSP. CEILING, WALLS FLOORS AND OTHER EXISTING PERMANENT BLDG ELEMENTS W/ 24 GA. COLOR MATCHED KYNAR FINISH CLOSURE PANELS FABRICATED TO EXISTING CONDITIONS.
- 6) SLIDING WINDOWS OR CASEMENT WINDOWS MUST MEET EGRESS REQUIREMENTS.
- 7) ALL FRAME SYSTEMS SHALL BE 24"x74" CURTAIN WALL SYSTEM BY EFCO.
- 8) FINISH COLOR MATCH KYNAR 300, 24 GA. GALV. STEEL, THRU WALL PANS @ HEAD AND SILLS
- 9) ALL WINDOW UNITS, PANS SHALL SLOPE TO THE EXTERIOR, HAVE REINFORCED EDGES AND DRIPS SHALL CONICAL JOINTS AND MATERIALS NOT INTENDED TO BE EXPOSED TO WEAR.
- 9) CONTRACTOR TO INCLUDE IN THE PROPOSAL, REPLACEMENT OF CEILING TILE AND CEILING GRID MEMBERS IMMEDIATELY ADJACENT TO THE WINDOW UNITS TO ACCOMMODATE DAMAGE DUE TO THIS WORK AND NEW SET LOCATION AND THICKNESS OF THE WINDOW UNIT.
- 10) WHERE THERE IS A SINGLE RECESSED 120V RECEPTACLE INSTALLED IN THE WALL PANEL, REMOVE AND REINSTALL USING SURFACE MOUNT EMT. NEW SPEC GRADE RECEPTACLE, METAL COVER & SEALED BOX, APPROXIMATELY IN SAME LOCATION AS THE EXISTING.
- 11) PROVIDE STEEL INSERTS AS REQUIRED FOR WIND LOAD AND DEAD LOAD.
- 12) COORDINATE ALL DIMENSIONS AND COMPONENTS TO CONCEAL INTERIOR WALLS IN ALL OPENINGS.
- 13) PROVIDE ENGINEERS CALCULATIONS DEMONSTRATING COMPLIANCE WITH WIND LOADS FOR THE SPECIFIC CURTAIN WALL FRAMING MEMBERS PROPOSED. IF CALCULATIONS AND DESIGN LOADS ARE NOT FULLY DETAILED IN THE SHOP DRAWINGS, THE CONTRACTOR MAY SUBMIT SEALED N.C. ENGINEER DRAWINGS IN THEIR PLACE.
- 14) FIELD DRILL WEERS IN HORIZONTAL CURTAIN WALL MEMBERS AS RECOMMENDED BY THE MANUFACTURER.
- 15) CLEAN ALL SURFACES AND GLAZING OF OILS, ADHESIVES, STICKERS, CAULKS AND OTHER CONTAMINANTS TO PROVIDE A NEW, TURNKEY INSTALLATION.
- 16) ADD P/IC CALULATING INSERTS 3 SPES OF ALL FRAMES TO FACILITATE BACKER ROD AND CAULK INSTALLATION.
- 17) ASBESTOS PANELS - CONTACT BELVIN HALL, BPOE ASBESTOS PROGRAM MANAGER (828) 775-2424 CELL OR (828) 252-4244 OFFICE). ONE WEEK PRIOR TO START OF ASSEMBLING OF ASBESTOS PANELS, CONTRACTOR TO REMOVE TRANSITE WINDOW PANELS INTACT (NO BREAKAGE CUTTING, DRILLING ON THESE PANELS). THE OWNER WILL PROVIDE A DUMPER AND ACCEPT THE ASBESTOS PANELS REMOVED AND DOUBLE WRAPPED WITH 6-MIL POLY WRAP AND SECURED WITH DUCT TAPE BY THE CONTRACTOR. COORDINATE PICK UP WITH BELVIN HALL FOR PICK UP. THE OWNER WILL REMOVE AND DISPOSE OF THE PACKAGED PANELS.

## SHEET SCHEDULE:

- COVER FLOOR PLAN, NOTES & VICINITY PLAN
- A203.1 ELEVATIONS & DETAILS
- A203.2 DETAILS

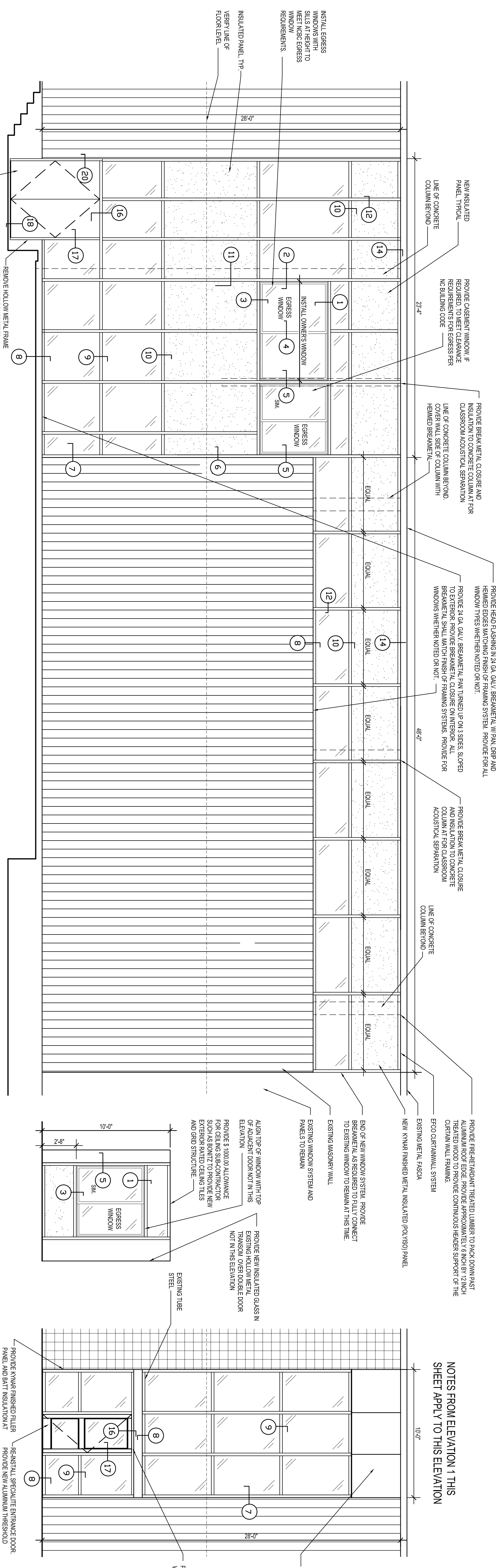
## Buncombe County Schools Facilities and Planning

Timothy Fierle AIA, Director  
175 Bingham Road □ Asheville, N.C. 28806-3800  
Phone: (828) 255-5916 Fax: (828) 255-5923



## COVER





**1 DRAMA & CLASSROOMS ELEVATION**  
1/4" = 1'-0"

**2 CLASSROOM ELEVATION**  
1/4" = 1'-0"

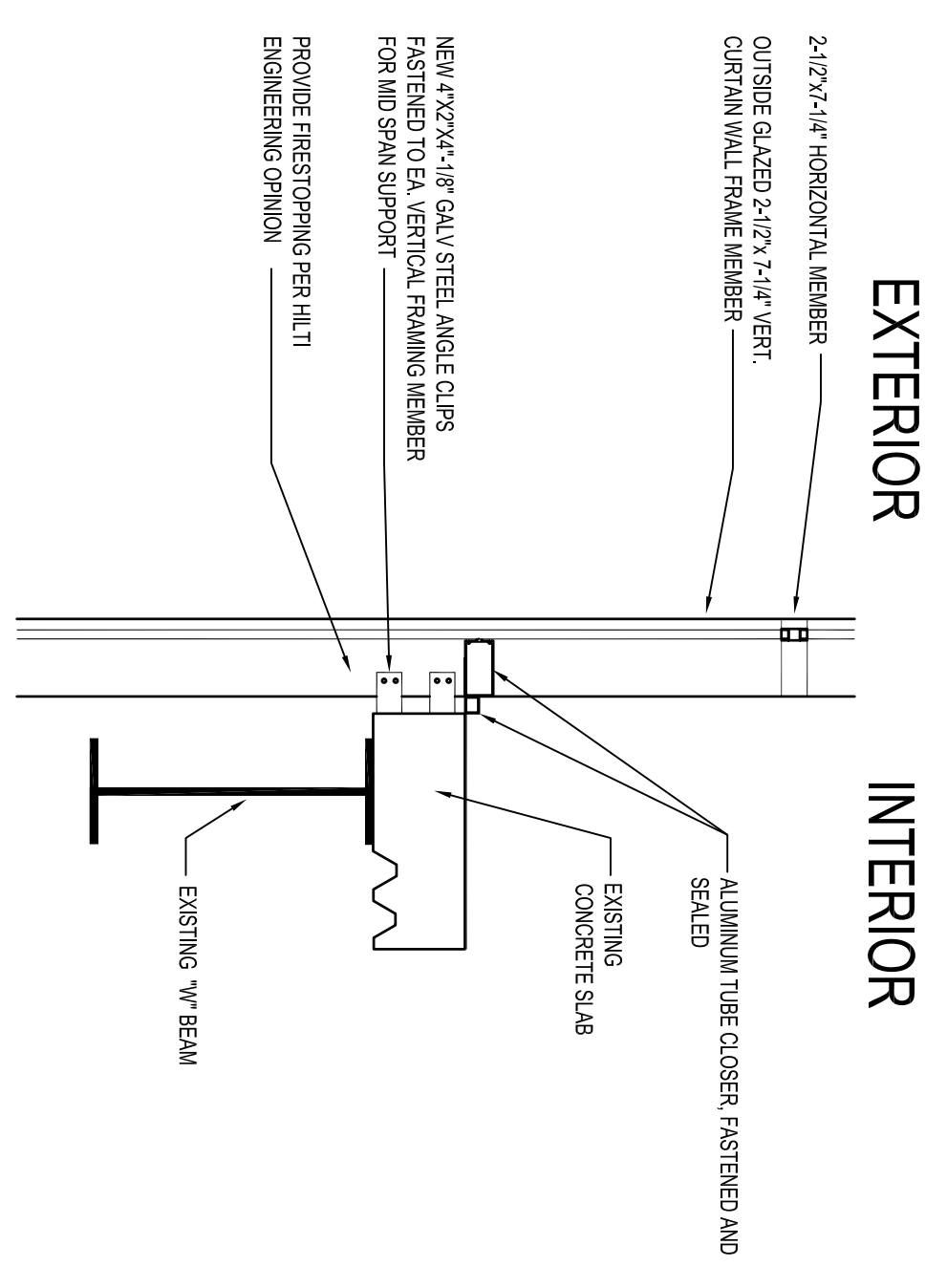
**3 CORRIDOR ELEVATION**  
1/4" = 1'-0"

**NOTES:**  
1. CONTRACTOR IS RESPONSIBLE FOR FIELD VERIFYING ALL QUANTITIES AND DIMENSIONS. DIMENSIONS NOTED ARE FOR CONVENIENCE ONLY.  
2. PROVIDE INCIDENTAL PAINTING OF SURFACES DAMAGED OR EXPOSED ADJACENT TO WINDOW REPLACEMENT WORK. PAINT TO MATCH TO BE PROVIDED BY BCS.  
3. COORDINATE WITH SCHOOL PERSONNEL FOR ACCESS TO BUILDING DURING NORMAL BUSINESS HOURS. ACCESS TO THE SCHOOL FOR THE SUMMER WILL BE 7:00-5:30 MONDAY-THURSDAY.  
4. CONTRACTOR TO PROVIDE TEMPORARY PLYWOOD AND PROTECTION OF OPENINGS IN PROGRESS.



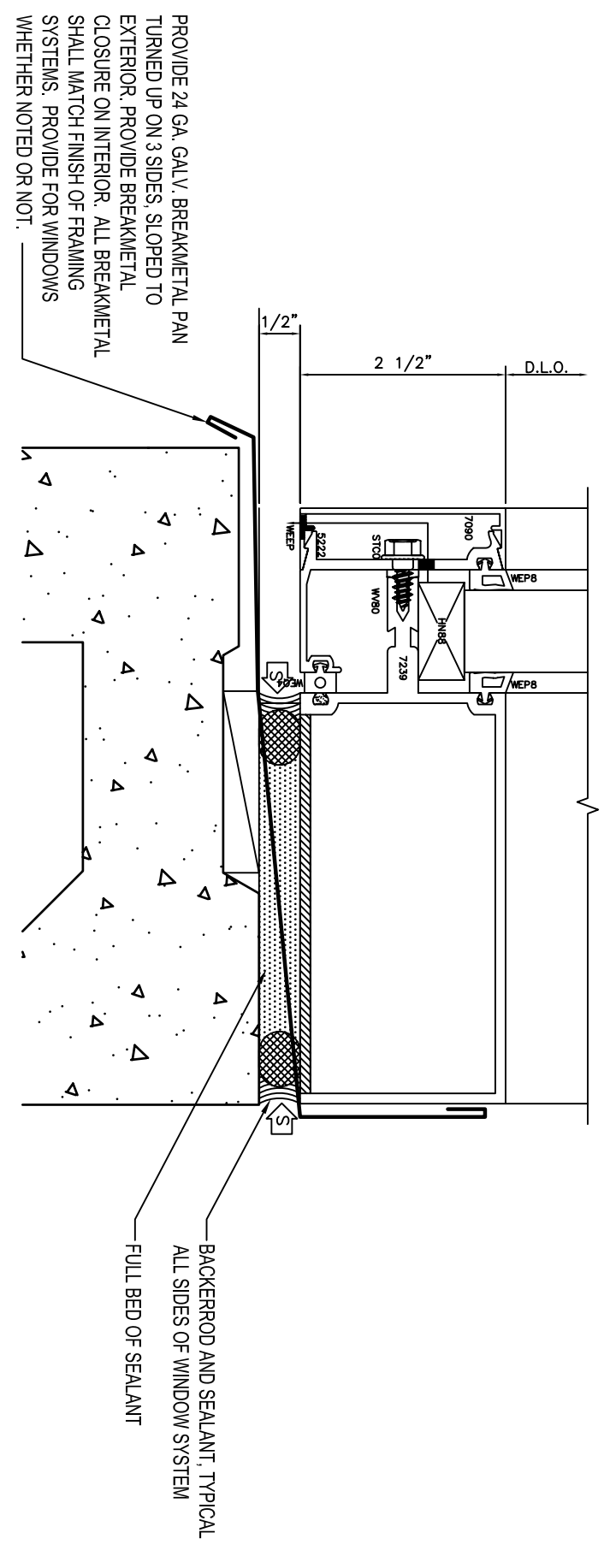
PHOTO OF FASCIA FROM PREVIOUS PHASE. IN SOME AREAS BAR JOINT ENDS MAY PROJECT PAST THE BEAM AND BE PACKED OUT IN BETWEEN

**5 TYPICAL EXISTING FASCIA PHOTO**  
NOT TO SCALE



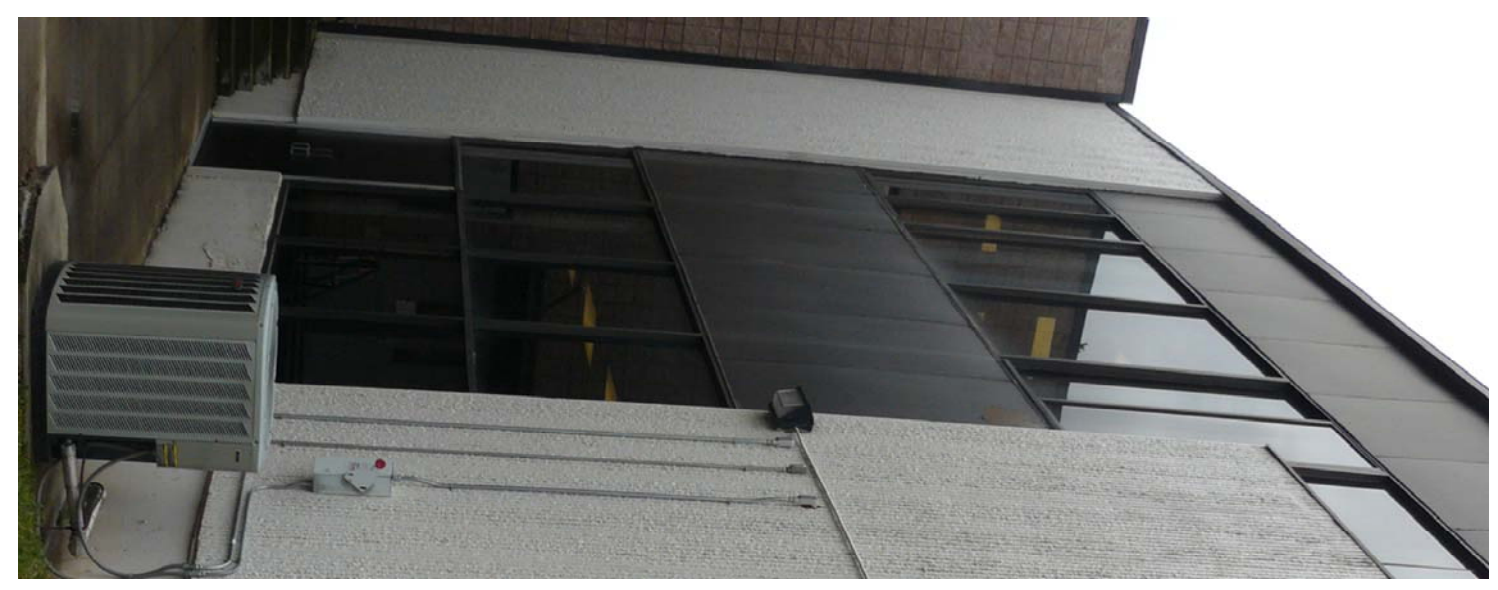
**EXTERIOR**

**INTERIOR**



**7 TYPICAL SILL FLASHING DETAIL**  
1 1/2" = 1'-0"

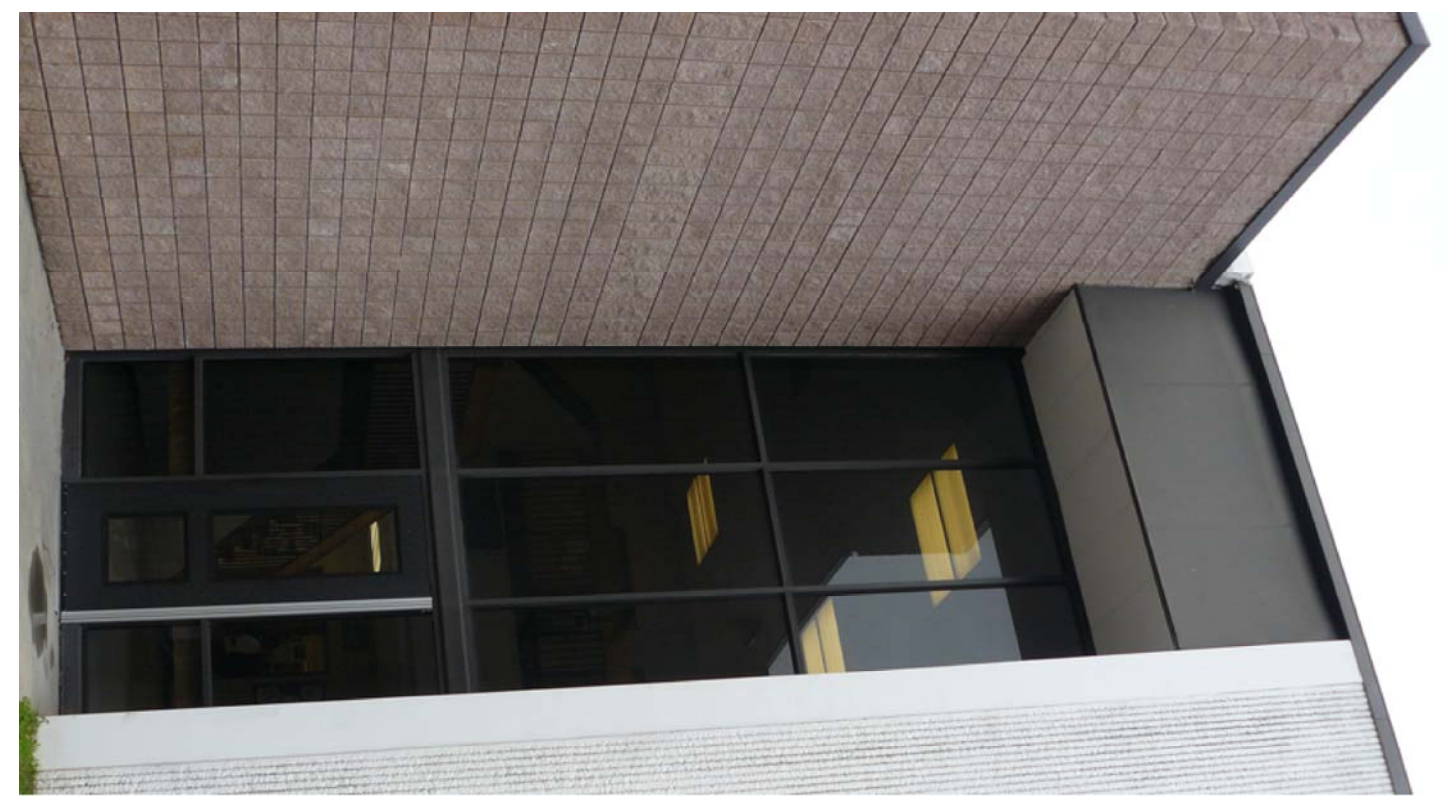
**6 DETAIL OF STRUCTURAL ATTACHMENT**  
3/4" = 1'-0"



DRAMA ROOM



CLASSROOM

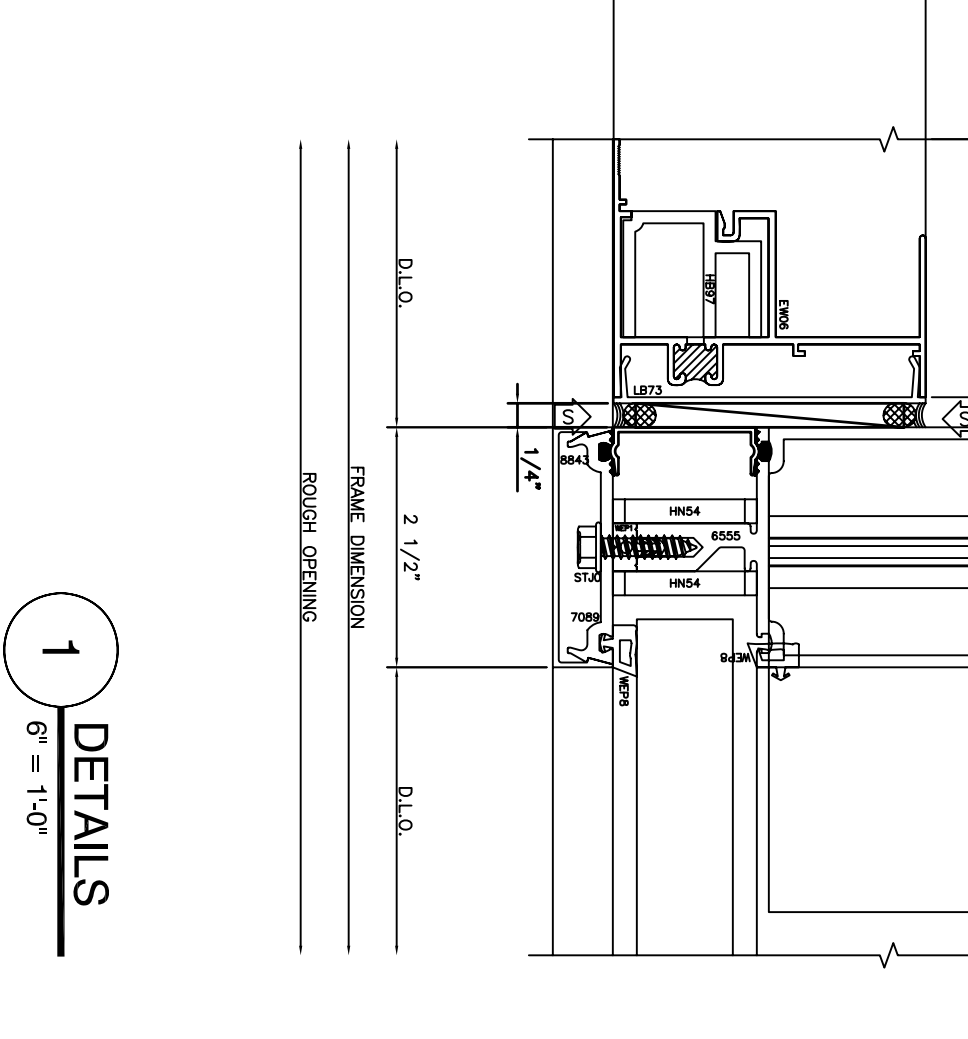
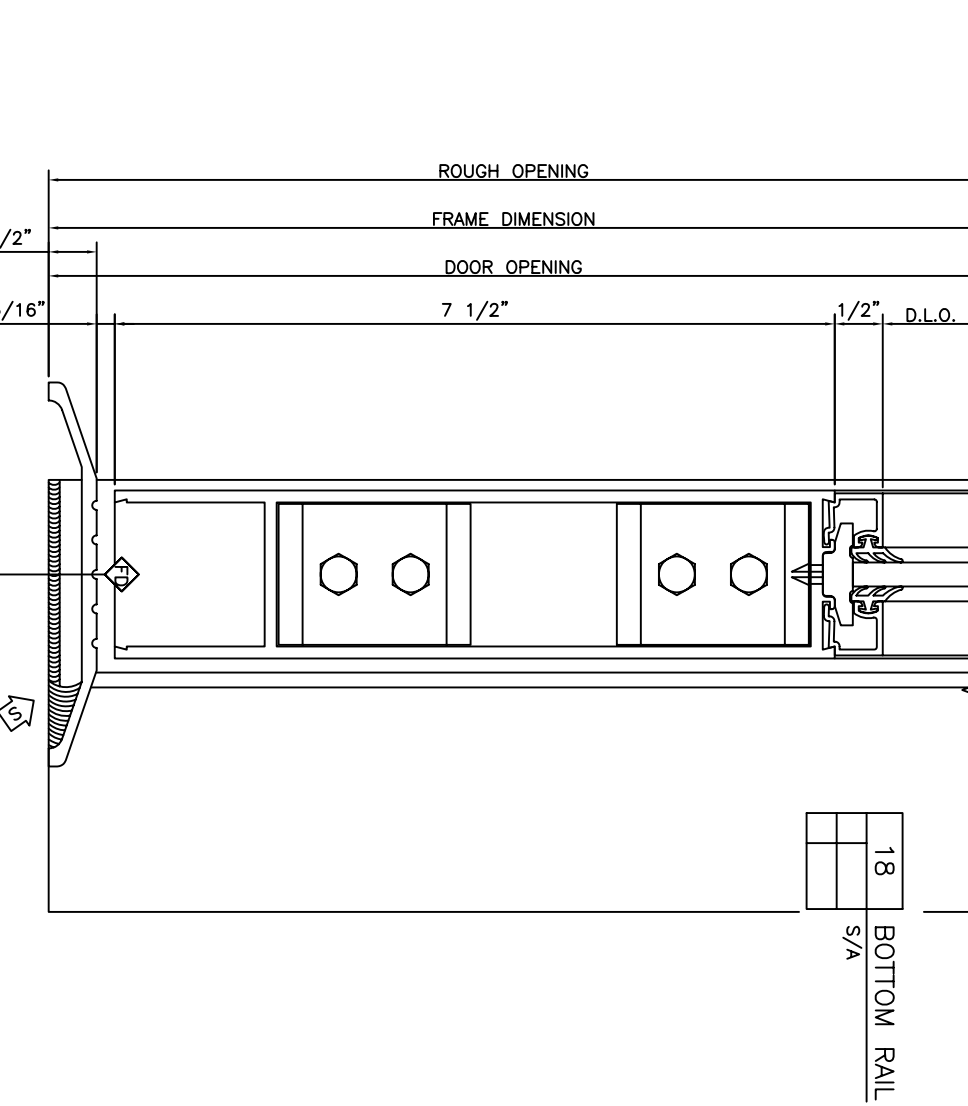
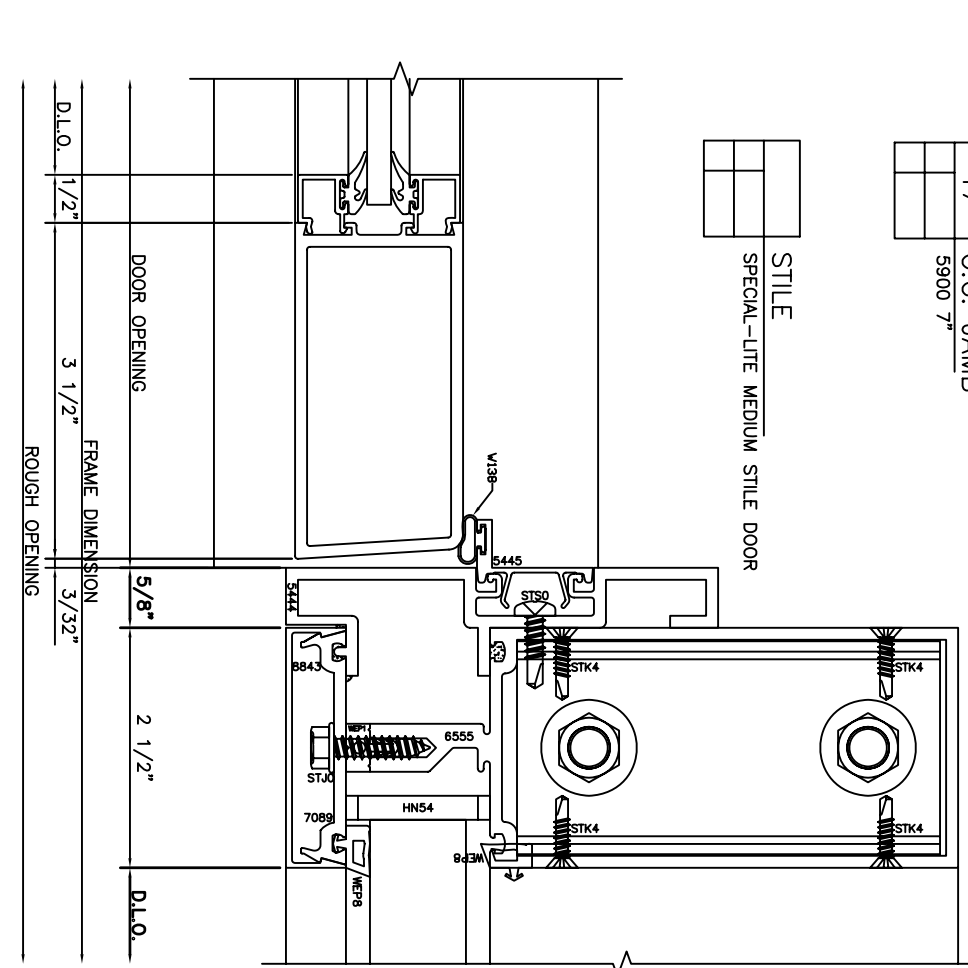
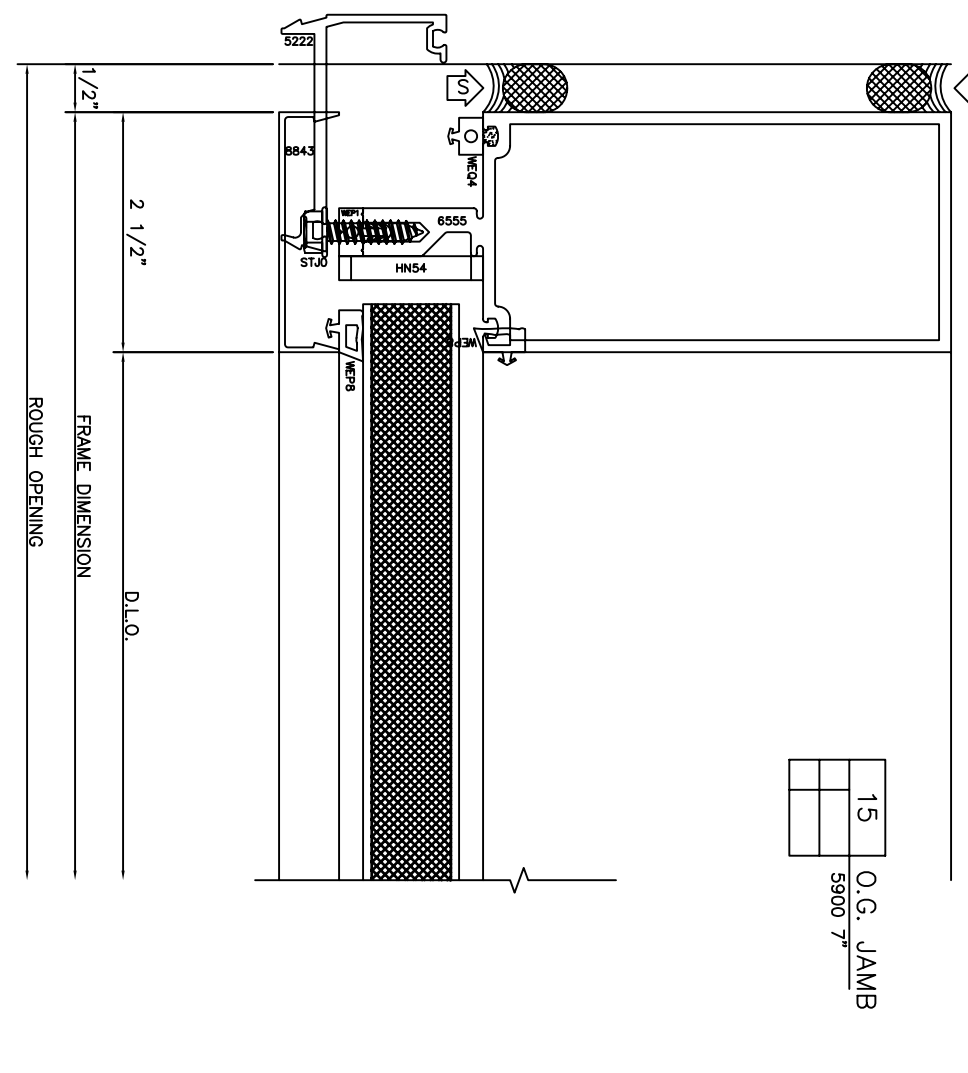
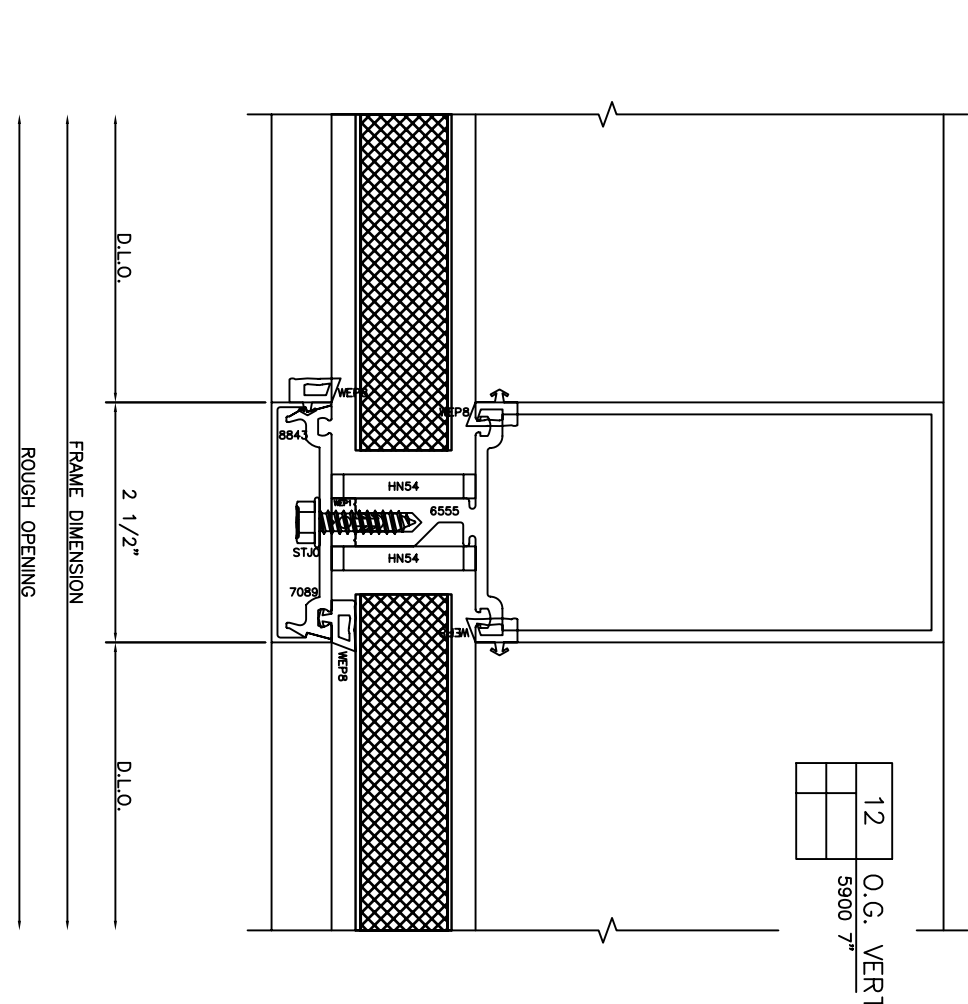
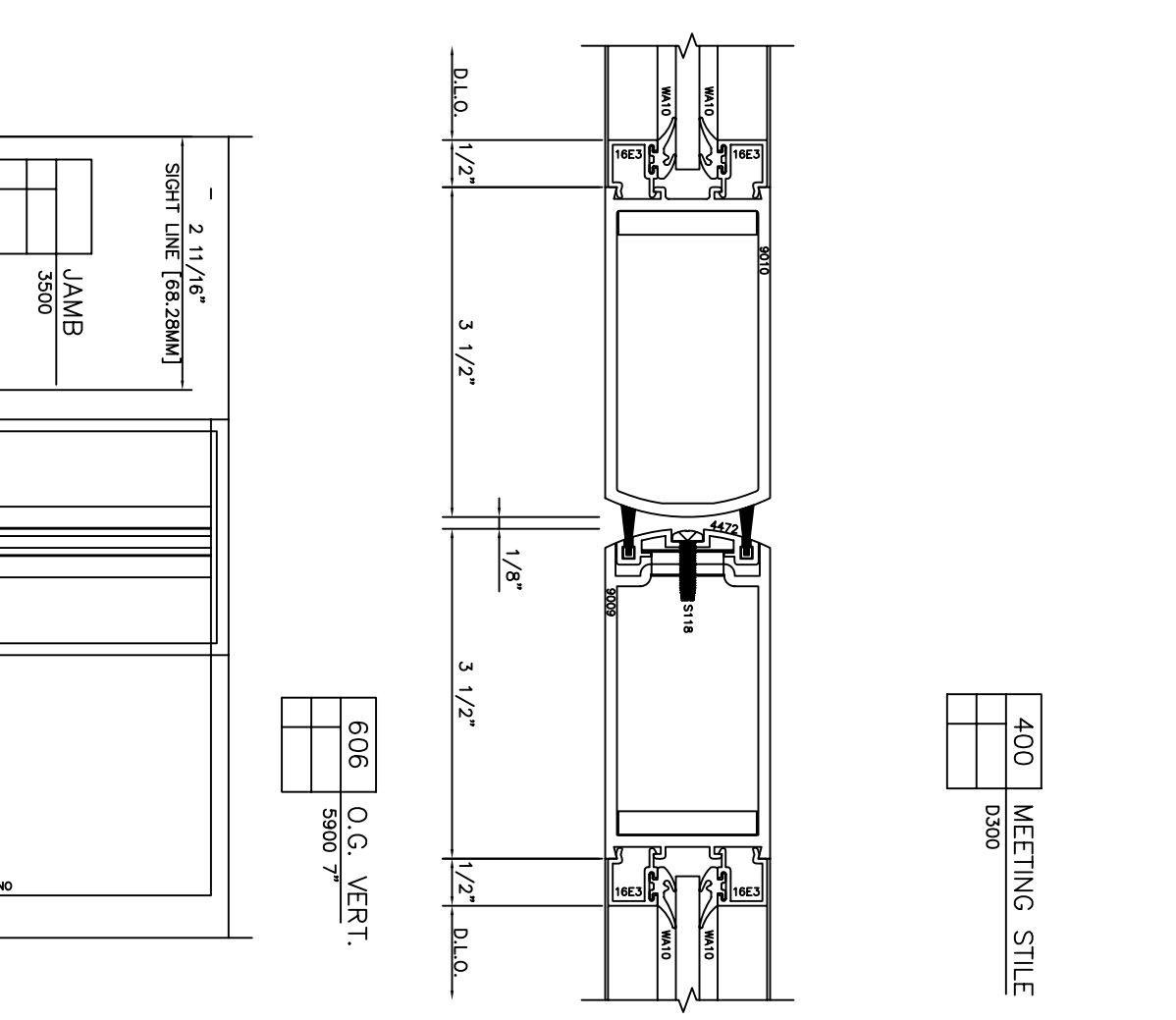
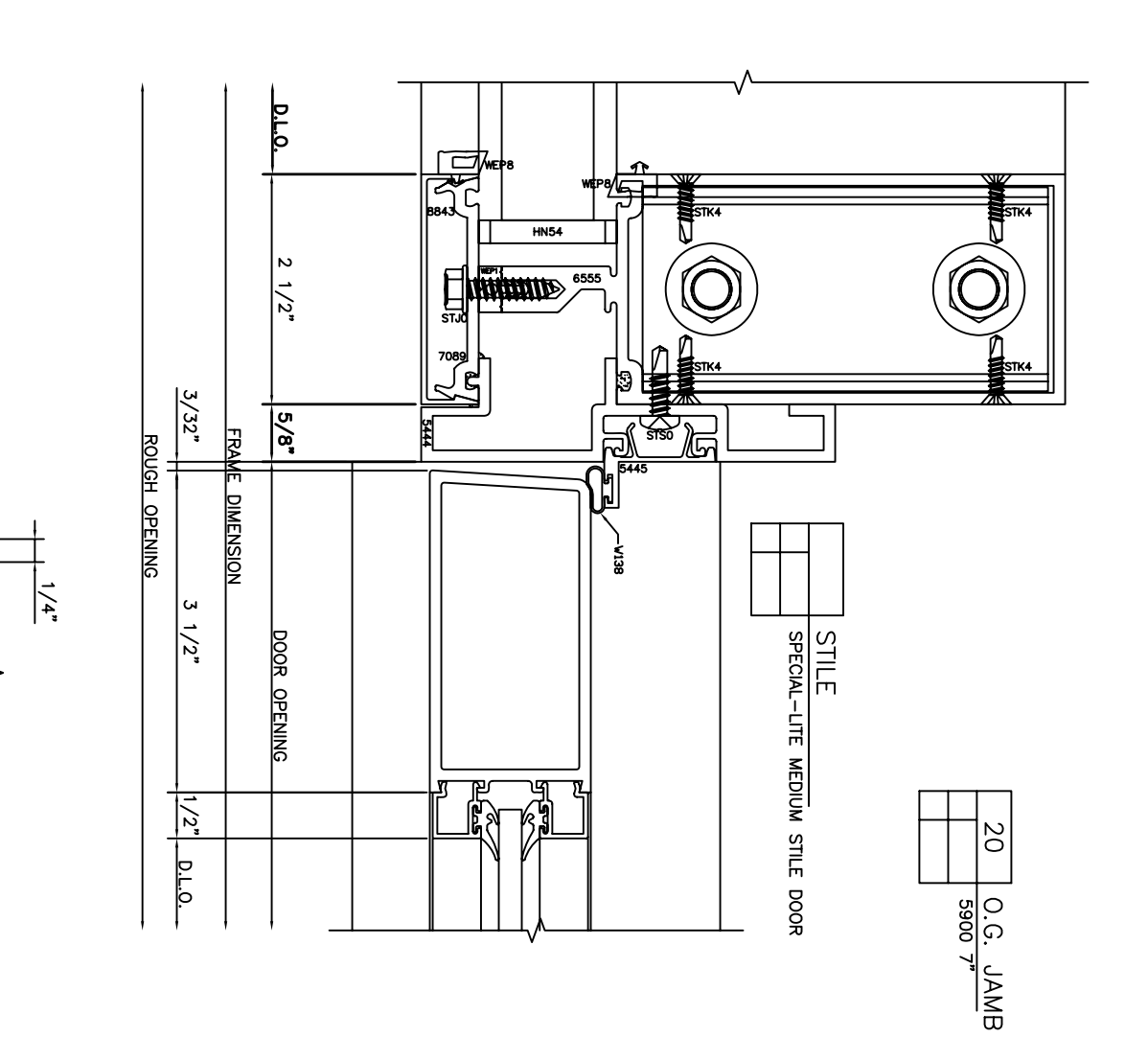
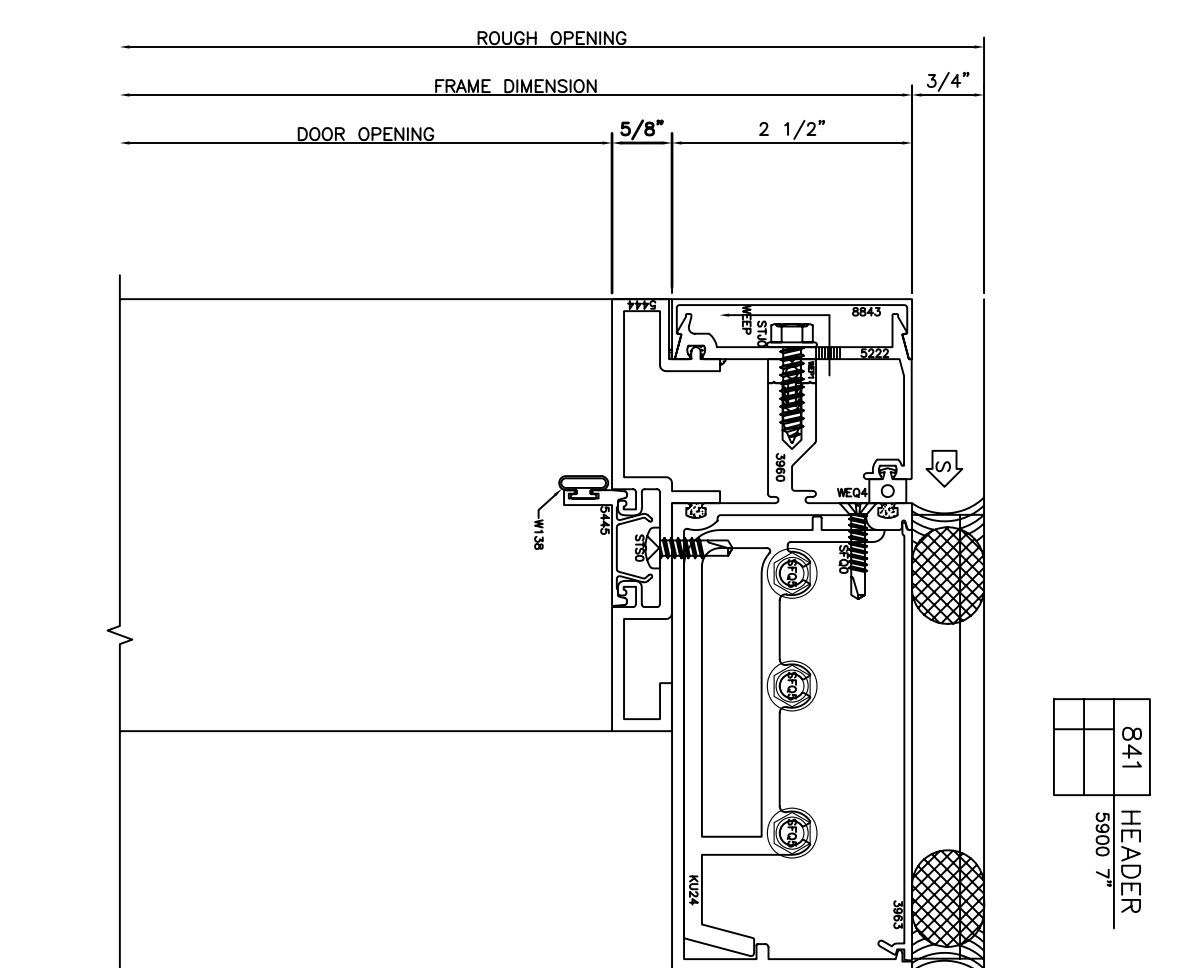
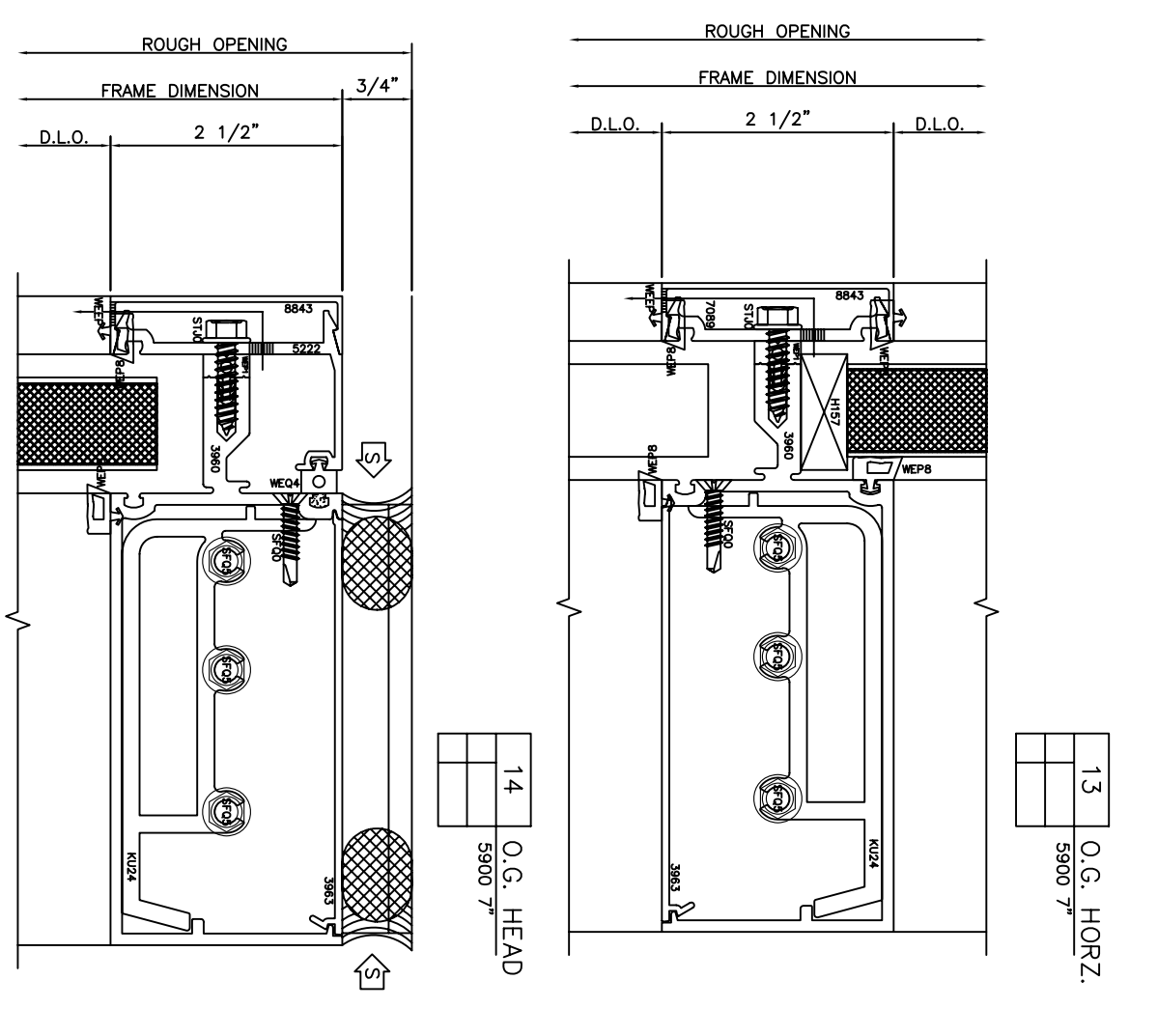
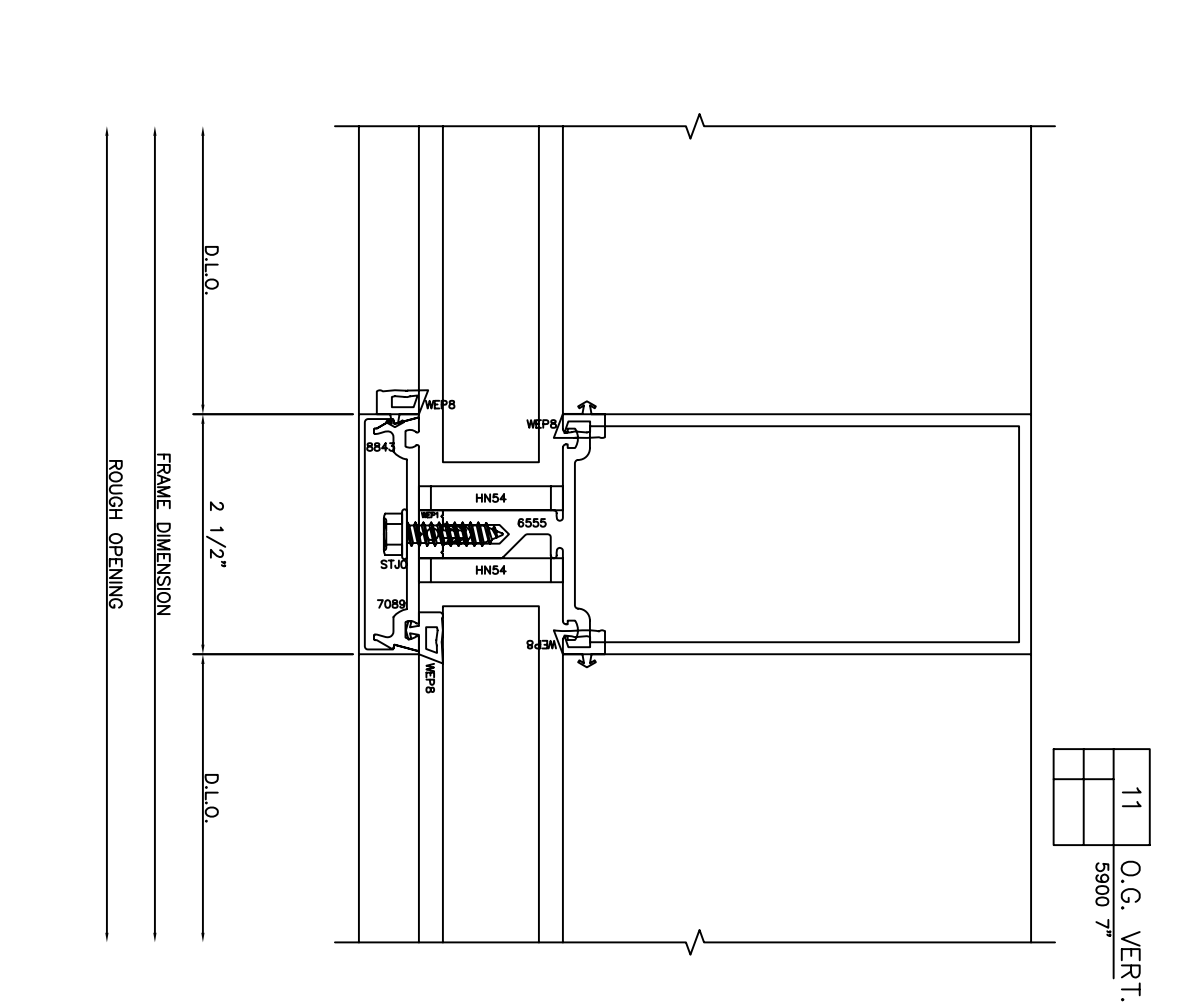
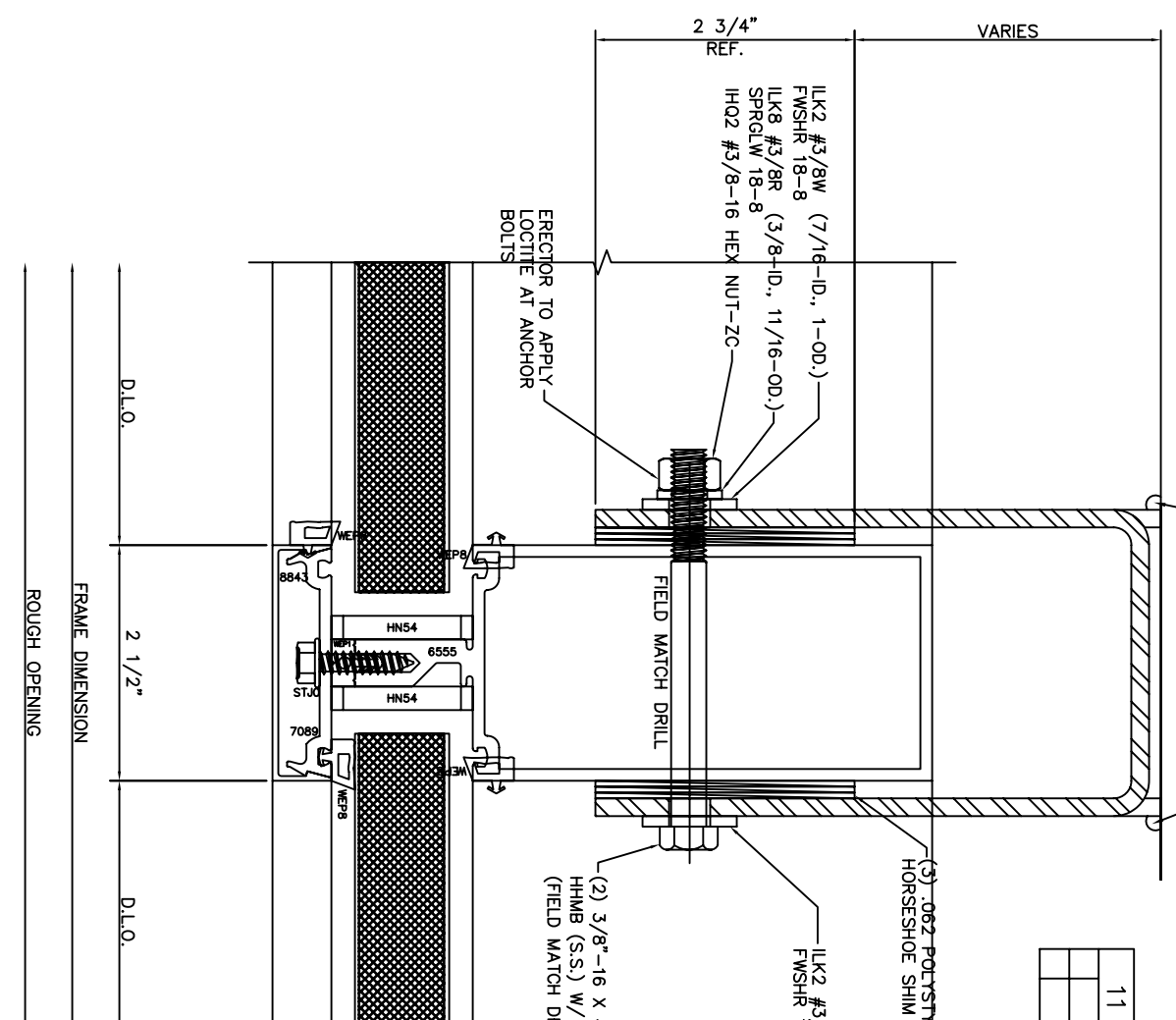
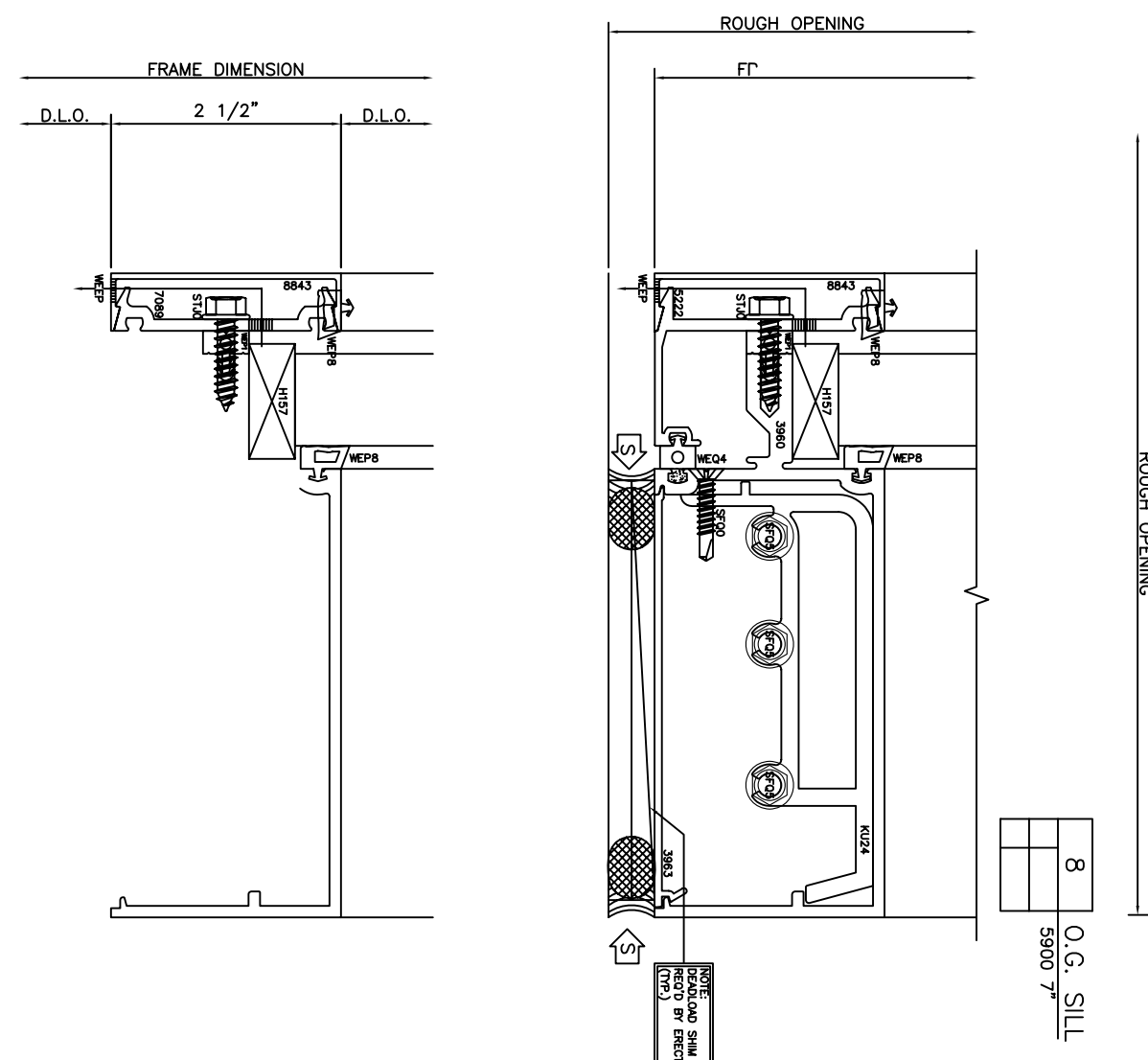
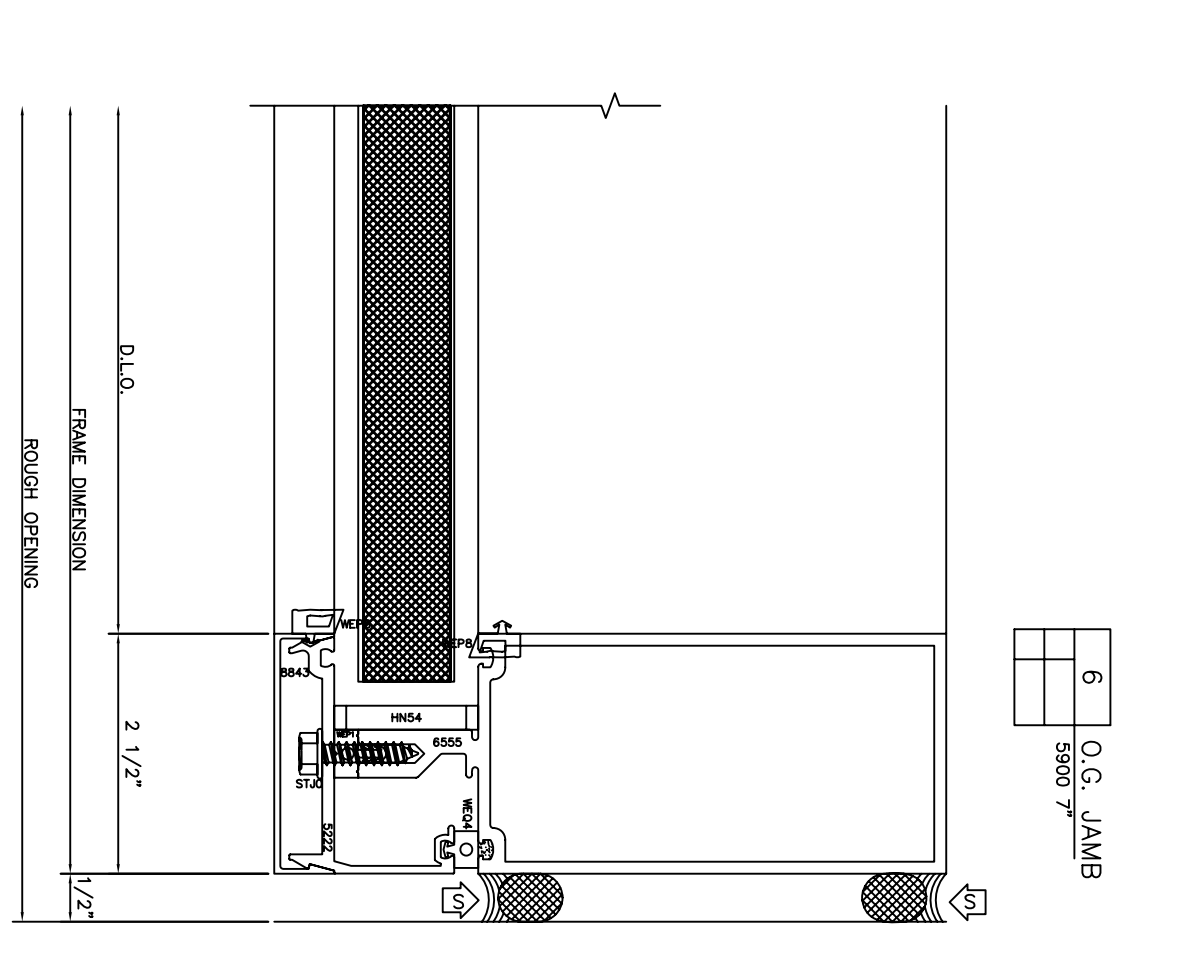
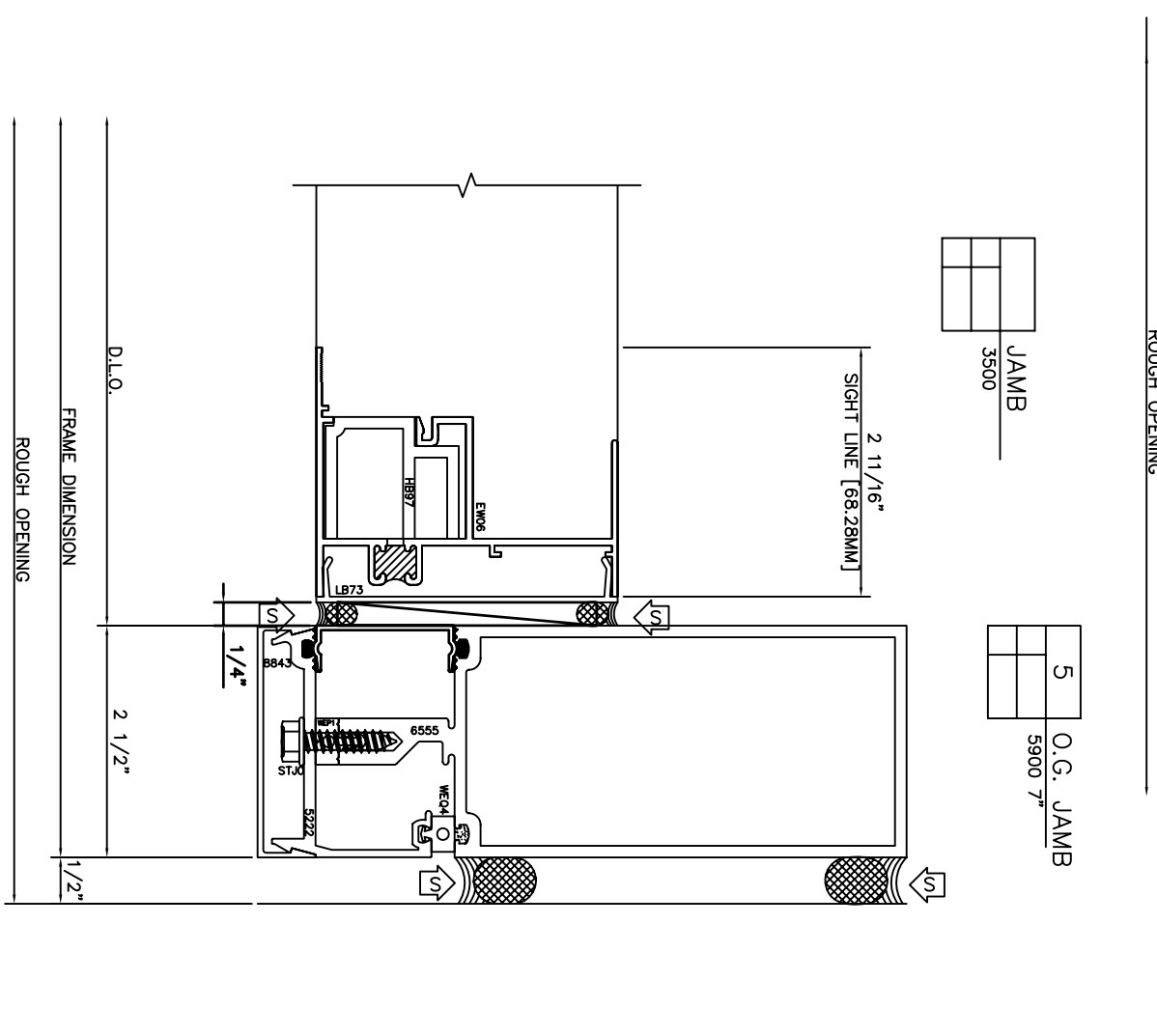
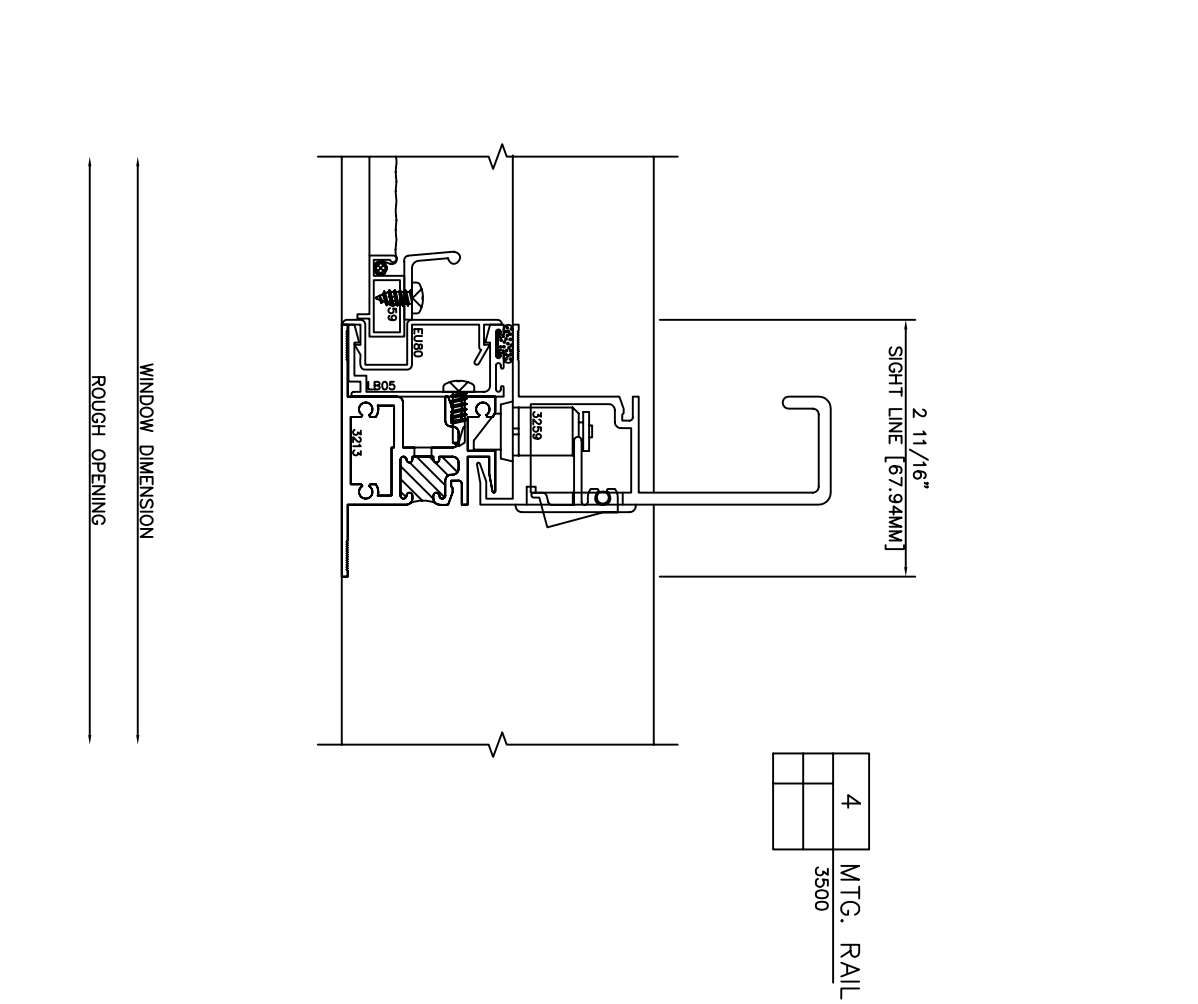
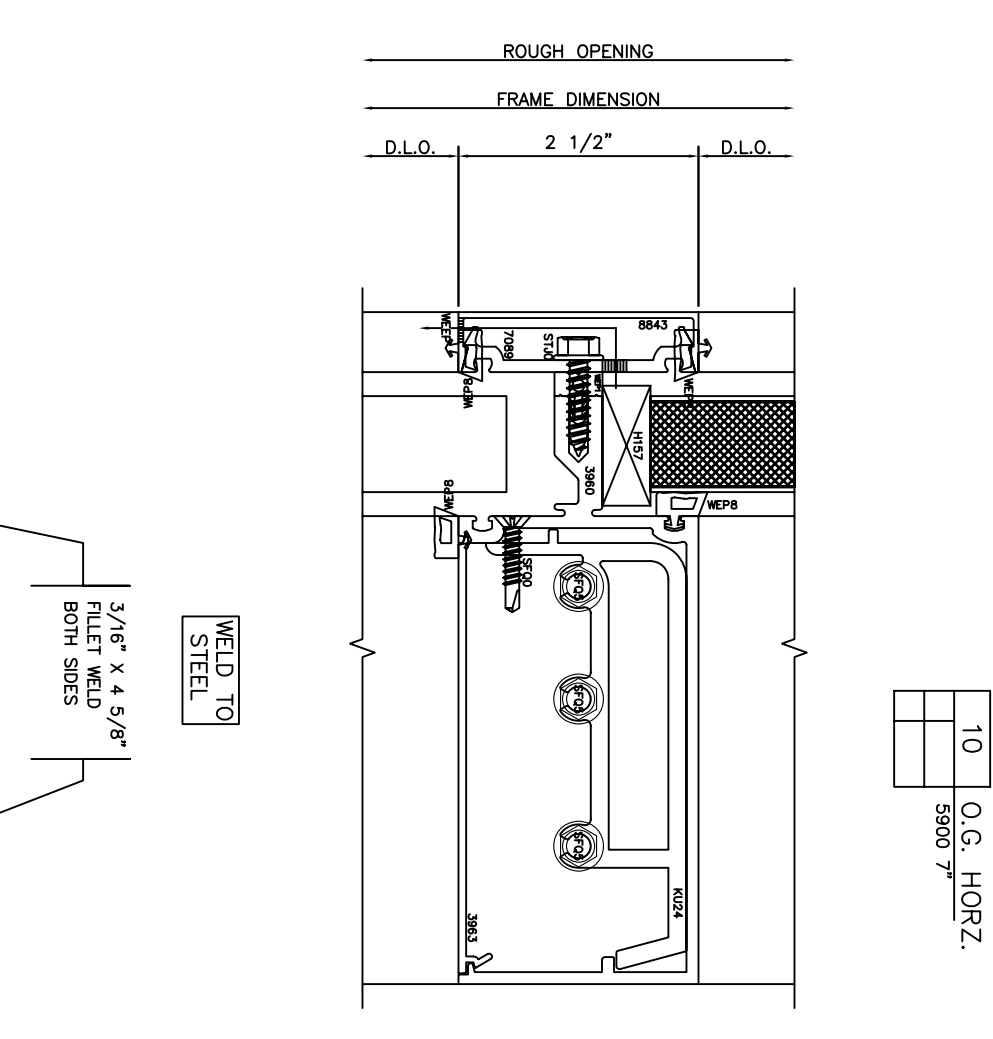
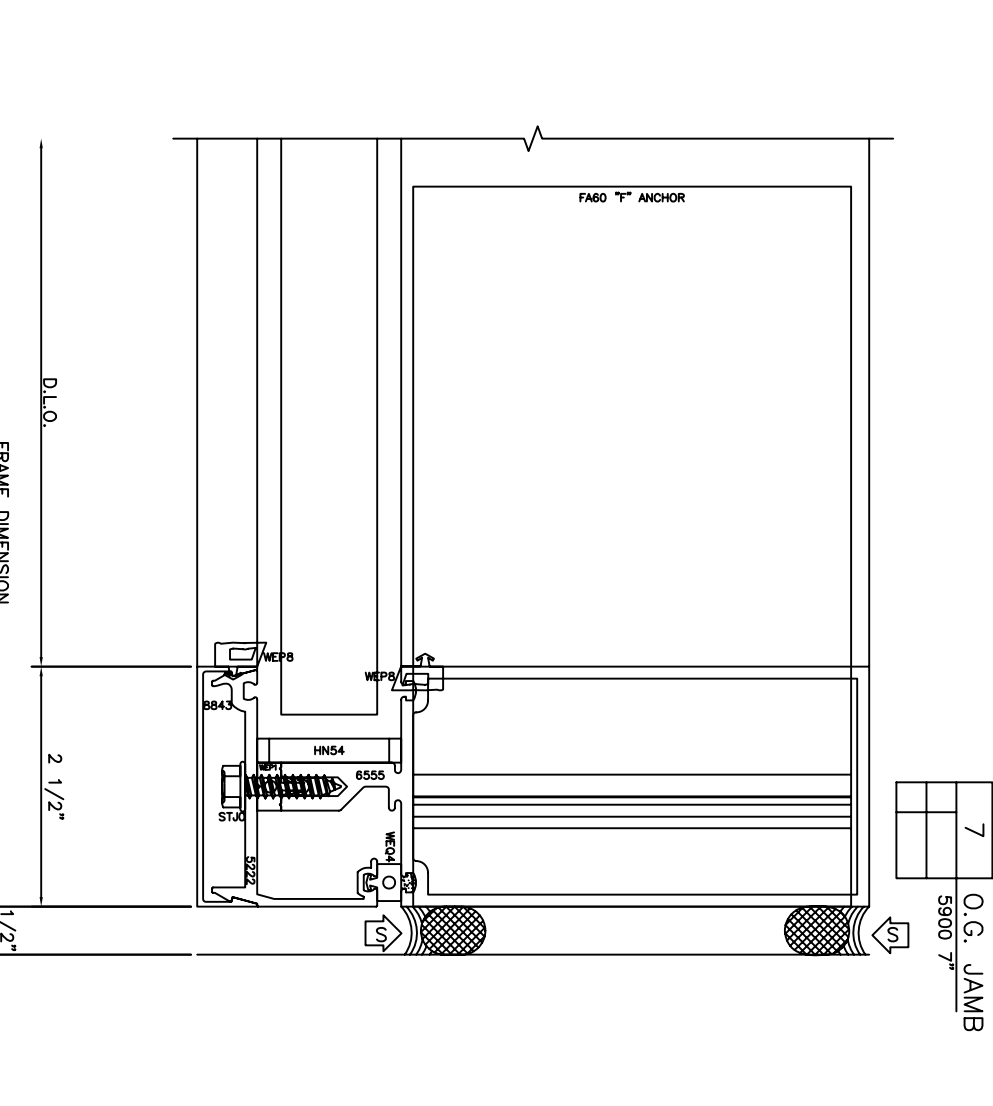
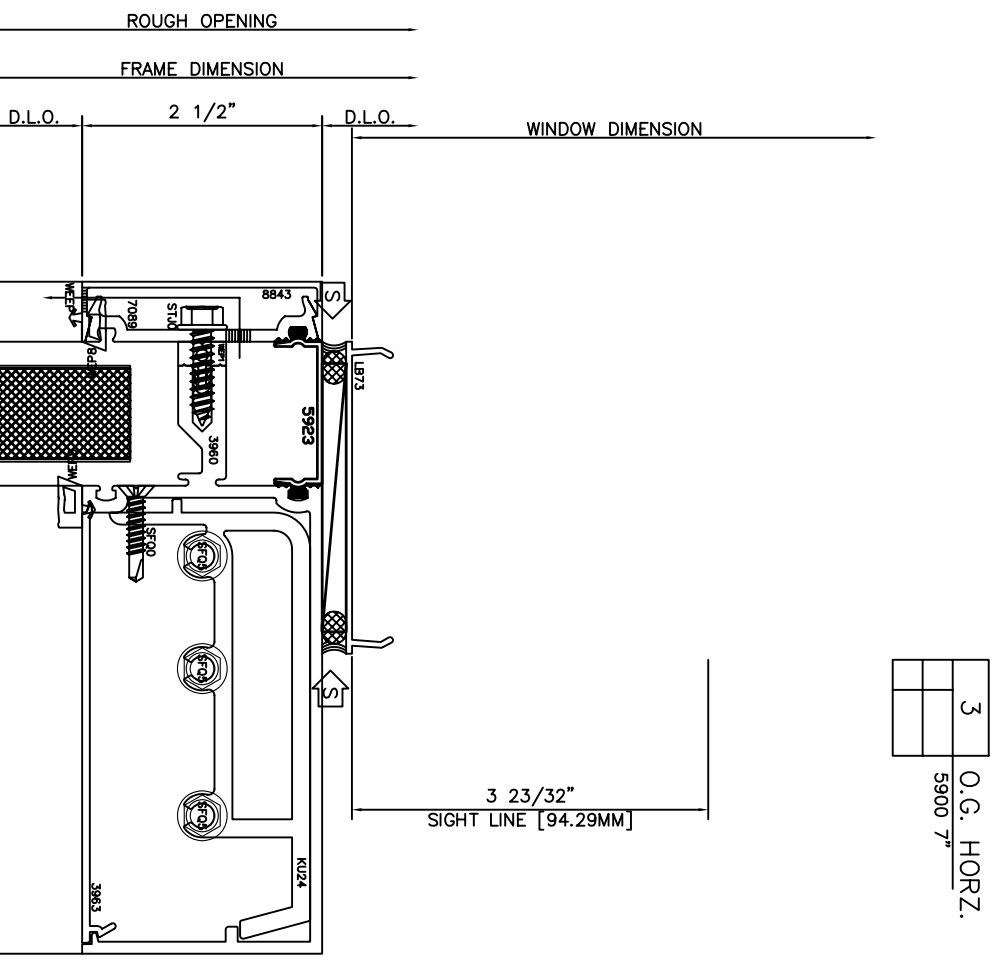
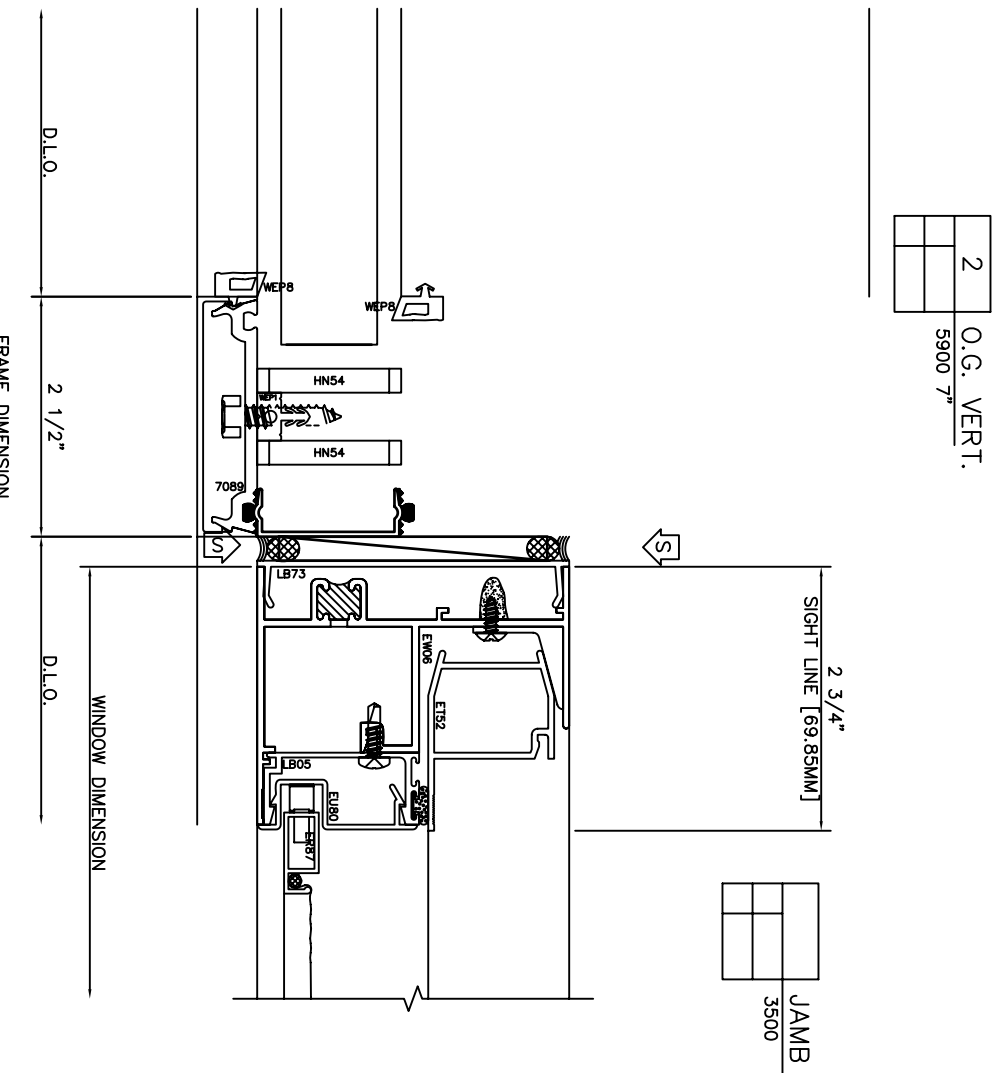
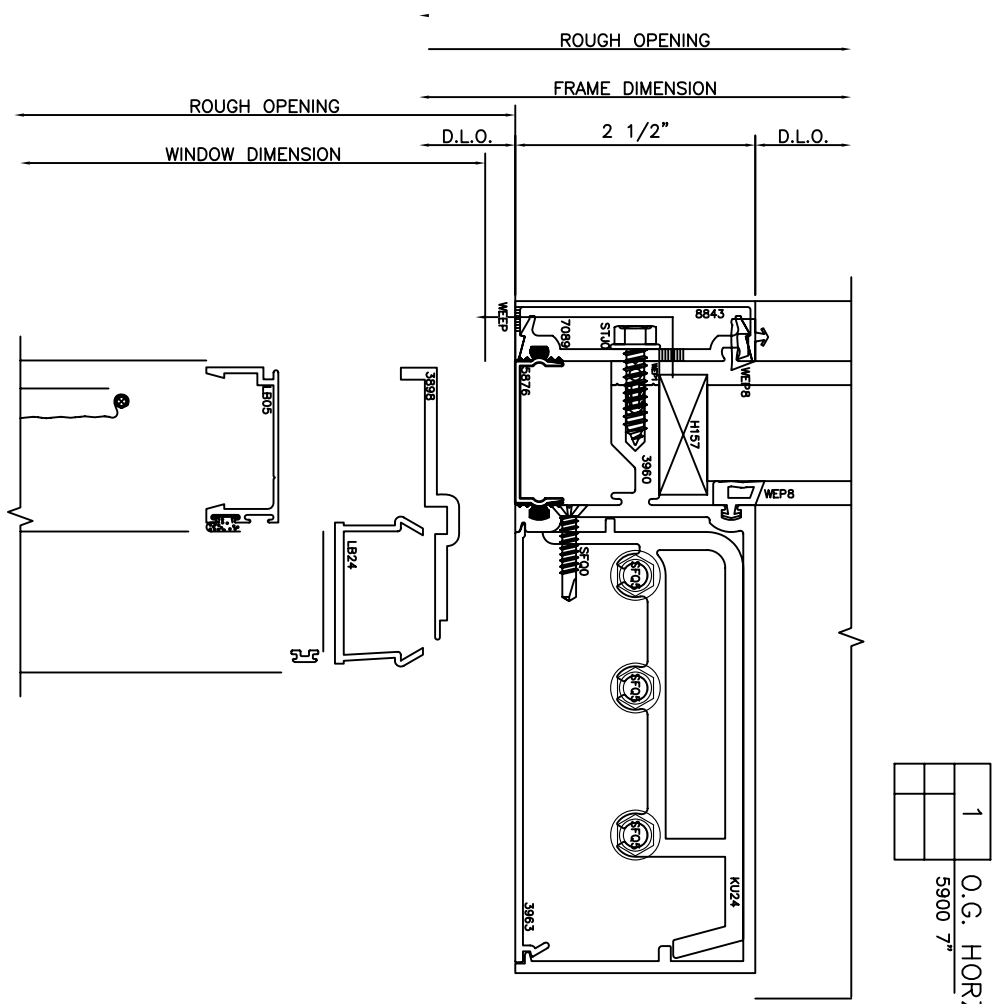


OUTSIDE OF MEDICAL CENTER

**4 EXISTING PHOTOS**  
NOT TO SCALE







1 DETAILS  
6" = 1'-0"

**GENERAL NOTE:**  
EFCO WINDOWS:  
BASIS FOR DESIGN

**A203.2**  
ELEVATIONS  
DESIGNER: P.V. HWK  
DATE: MARCH 27, 2012  
PROJECT CODE:

MARY ELIZABETH KANOSTON  
REGISTERED ARCHITECT  
8528 ASHEVILLE  
ASHEVILLE, NC

**Buncombe County Schools Facilities and Planning**  
Timothy Fierle AIA, Director  
175 Bingham Road □ Asheville, N.C. 28806-3800  
Phone: (828) 255-5916 Fax: (828) 255-5923

**BUNCOMBE COUNTY SCHOOLS**  
ELEVATING YOUNG MINDS

**A.C. REYNOLDS HIGH SCHOOL**

ONE ROCKET DRIVE  
ASHEVILLE, NC 28803

**12-ACRHS Windows**